



JEEP.
2000



A Sienna Grand Cherokee Limited, Solar Yellow Wrangler Sport and Silverstone Cherokee Classic near Makuu, Hawaii.



The dream began in 1940 with a 60-horsepower engine, 80-inch wheelbase and four-wheel drive. From these modest specifications, a civilian legend was born. Its calling cards were freedom, confidence and rugged capability. Nearly 60 years later, only the technology has changed. On Jeep® Grand Cherokee, a world-class V8 engine pumps out 235 horsepower, while our most advanced four-wheel-drive system ever, Quadra-Drive™ keeps Grand Cherokee moving even if only one wheel has traction. As millions of adventure seekers around the globe have discovered, the real power of a legend is where it can take you.

As a new millennium dawns, where will Jeep take you?



The CJ-2A was the first general-use civilian Jeep vehicle that Willys introduced. It was hard working as well as easy to work on.

Contents

Jeep Grand Cherokee	4-13
Jeep Cherokee	14-21
Jeep Wrangler.....	22-27
Selected Standard Features.....	28-29
Jeep Jamborees, Jeep Provisions, Jeep Accessories by Mopar.....	30-31

JEEP® GRAND CHEROKEE

Already the most award-winning 4x4 of the '90s, *Jeep Grand Cherokee* provided further proof of its technical innovation and four-wheel-drive leadership by ending the decade with 12 additional honors. New this year is an available Mopar Navigation System that uses Global Positioning System (GPS) satellite technology to guide you to your precise destination. Also new is the availability of the 4.7L Power Tech V8 on two-wheel-drive Grand Cherokee models. As *Four Wheeler* said, "*Jeep Grand Cherokee* is everything a genuine ready-for-the-trail Jeep should be, with luxury comforts and conveniences to make it the best authentic four-wheel-drive vehicle on the market."

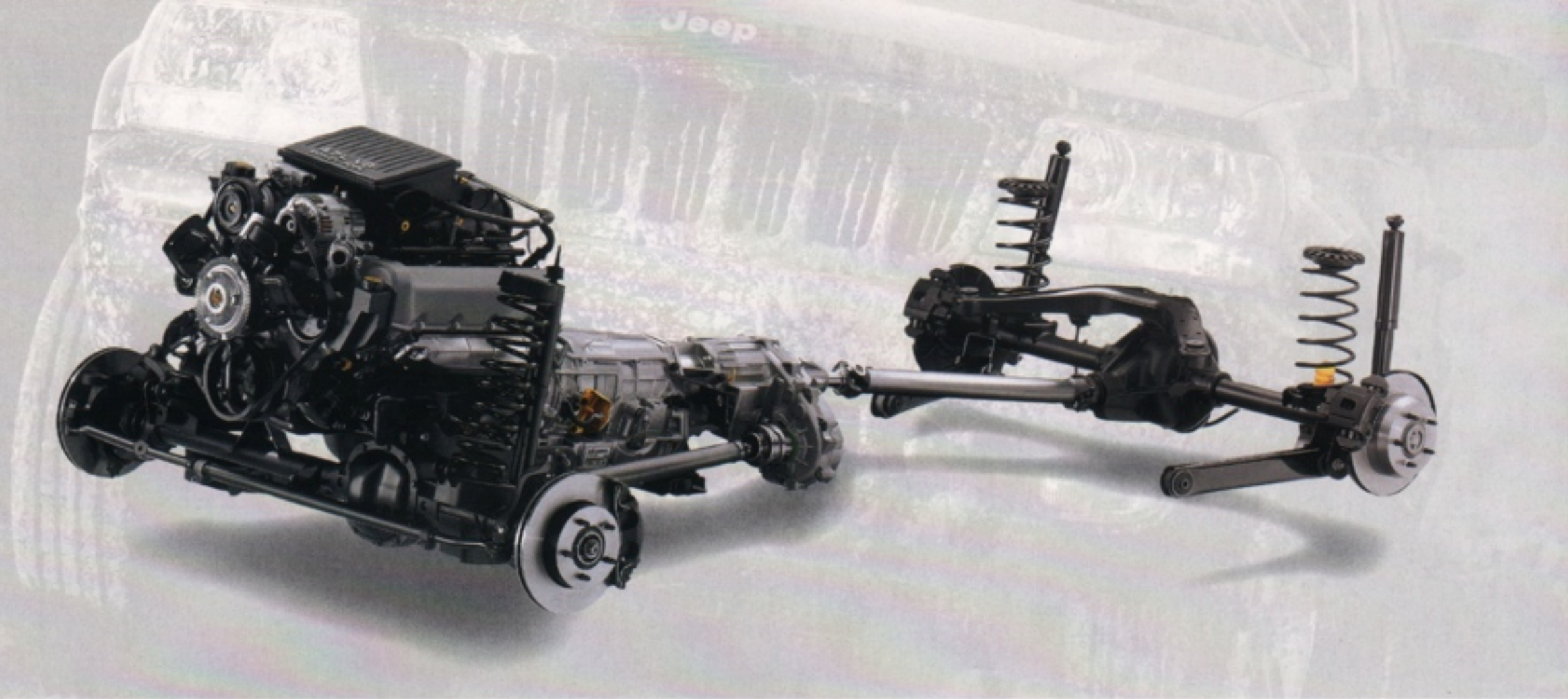


A Silverstone Grand Cherokee Limited at the WM Keck Observatory, Mauna Kea, Hawaii

THE QUADRA-DRIVE™ SYSTEM



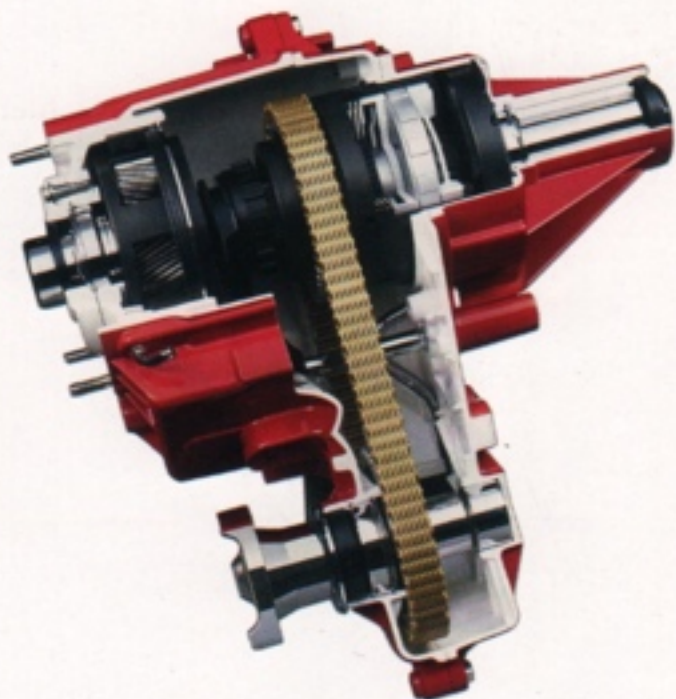
A Taupe Frost Grand Cherokee Laredo in the Alabama Hills of California.



"Without any special driver involvement, Quadra-Drive is superb," *Automobile Magazine* said about its 1999 "Technology of the Year" winner. That's because Quadra-Drive responds instantaneously (in less time than it takes to blink your eye) when any wheel slips. Torque is transferred — progressively, silently and smoothly — to the wheels or wheel with the most grip, and your journey continues. In fact, this completely mechanical system allows Grand Cherokee to continue under driver control even if only one wheel has traction. As *AutoWeek* noted, "We were unable to find a situation that could confuse Grand Cherokee's Quadra-Drive four-wheel-drive system — on-road or off."

Our most advanced four-wheel-drive system ever. In normal driving, engine torque is sent to the rear axle and wheels. When slippery conditions are encountered, Quadra-Drive can respond to a loss of traction in a number of ways. For instance, the rear axle gerotor coupling can transfer torque to the other rear wheel. If no traction is available, the transfer case gerotor coupling can send torque to the front axle. There, the gerotor coupling can transfer torque side to side, sending 100 percent of the developed engine torque to just one front wheel, if necessary, to maintain traction. Quadra-Drive is optional on Limited and Laredo 4WD models.

A key element of Quadra-Drive is the Quadra-Trac II™ on-demand transfer case, which transfers torque quickly and quietly between front and rear axles.



The Vari-Lok™ progressive axles in Quadra-Drive allow engine power to be transferred side to side on both the front and rear axles.



POWER AND PERFORMANCE



A Sienna Grand Cherokee Limited in the San Gabriel Mountains of California.



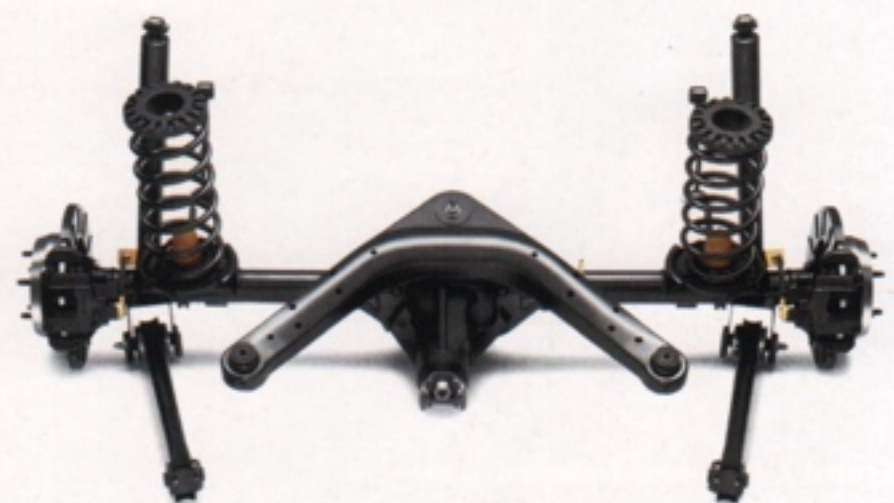
Its exclusive Quadra-Coil™ suspension gives Jeep® Grand Cherokee impressive on-road manners — without compromising its exceptional capability at pavement's end. A three-link rear suspension, widely spaced tie-rod points, coil springs at all four corners and 16-inch wheels and tires provide a luxurious on-road ride. Off-road, solid front and rear axles supply constant ground clearance, while the optimized steering geometry communicates surface differences accurately to the driver. Standard four-wheel disc antilock brakes feature large brake rotors, dual-piston front calipers and electronic brake distribution — helping Grand Cherokee bring you to a halt quickly and under control.

The available 4.7L Power Tech V8 provides 235 horsepower, 295 pound-feet of torque and allows Grand Cherokee to tow up to 6,500 pounds when properly equipped. And with a reverse-gear ratio the same as the first-gear ratio, its multispeed automatic transmission provides exceptional torque when backing up a heavy trailer. In addition, an alternate second gear ratio smooths downshifts and allows the vehicle to maintain higher speeds when towing.



Integrating frame and body into a single unit, Grand Cherokee's durable UniFrame means minimal vibration reaches you in the vehicle. In addition, its light weight contributes to Grand Cherokee's unsurpassed fuel economy figures (EPA 15 city/19 highway) for a V8-equipped 4WD sport-utility vehicle.

On pavement, an innovative three-link rear suspension helps provide a steady, comfortable ride and allows Grand Cherokee to corner flat in turns. Off-road, it provides outstanding suspension articulation.



PREMIUM ACCOMMODATIONS



Grand Cherokee Limited leather-trimmed seats are available in Camel (shown), Agate or Taupe.

AUTO DOOR
LOCKS? YES

REMOTE LINK
TO MEMORY?

FLASH LIGHT
WITH LOCKS



Rich craftsmanship abounds in Grand Cherokee Limited's cabin.

The only Infrared Dual Zone Climate Control system in its class resides here, allowing both the driver and front-seat passenger to select their own comfort levels. Controls on the steering wheel's underside put 180 watts of Infinity Gold™ Sound System power at your fingertips — letting you change radio stations or move between your favorite cassette or CD selections without taking a hand off the wheel. Ten-way power front seats feature power recliners, while driver and front-passenger heating controls with HI and LO settings are available.



With its rich textures and soft-touch surfaces, the Grand Cherokee instrument panel defines elegance. On Limited, a high-gloss woodgrain finish accents the center console and instrument panel moldings. Adding another touch of refinement is Limited's standard Infrared Dual Zone Climate Control system. Sensors here continually measure surface temperatures in the zones indicated for the driver (red) and front-seat passenger (orange) — making adjustments in airflow and temperature when necessary to maintain the selected comfort level.

AUTO DOOR
LOCKS? YES

REMOTE LINKED
TO MEMORY? YES

FLASH LIGHTS
WITH LOCKS? Y



With Grand Cherokee's standard overhead console, you can program up to 13 electronic preferences for the doors, seats, headlamps and more. Console shown with HomeLink® Universal Transceiver (standard on Limited and included with select Laredo models).

VERSATILITY



Grand Cherokee Laredo cloth seats are available in Taupe (shown), Agate or Camel.



Properly secure all cargo.

Consider it our department of the interior. From here, access to wide open spaces is yours. In the fully carpeted cargo area, an available net and eight tie-down loops help keep items secure, while a covered storage bin (standard on Limited, available on Laredo) contains a 12-volt power outlet for your computer, fax or cellular phone with the proper hookups.

A) A flat tire is bad enough. Accessing a mud-caked spare under a vehicle is worse. Grand Cherokee's spare tire stays clean and dry inside — and it's the only domestic 4x4 in its class with this feature. B) With the rear seats up, Grand Cherokee offers 39.0 cubic feet of cargo space. To increase that space to 72.3 cubic feet, simply pivot the rear seat's height-adjustable, hinged head restraints forward, raise the seat cushion, then fold the entire seat down. For the best of both worlds, split-fold the rear seats to allow a passenger to use one side while the other is folded to accommodate gear.

COLOR AND TRIM



Dayton/Regina cloth. Standard on Laredo. Shown in Taupe, also available in Agate and Camel.



Royale premium leather trim. Optional on Laredo. Shown in Agate, also available in Taupe and Camel.



Royale premium leather trim. Standard on Limited. Shown in Camel, also available in Agate and Taupe.

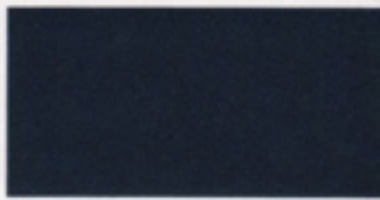


16"x7" Silverblade Cast Aluminum with Sparkle Silver accents (Standard: Limited)



16"x7" Sport Cast Aluminum with Silver accents (Standard: Laredo)

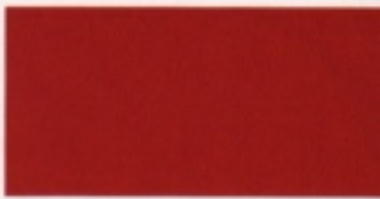
Patriot Blue Pearl Coat



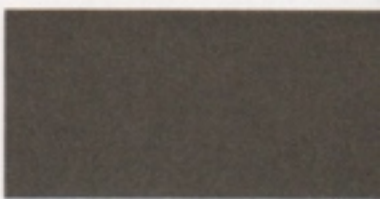
Sienna Pearl Coat



Flame Red



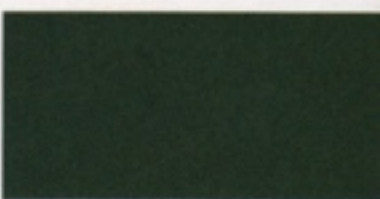
Taupe Frost Metallic



Champagne Pearl Metallic



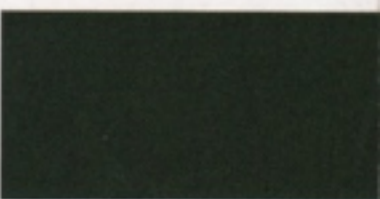
Everglade Pearl Coat



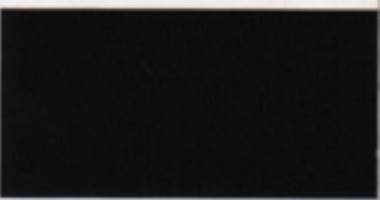
Silverstone Metallic



Shale Green Metallic*



Black



Stone White



*Late availability

JEEP® CHEROKEE

As some 4x4s navigate a trail for the first time, they're covering ground pioneered by Jeep Cherokee (XJ) over 15 years ago. After all, the first 4x4 in its class to offer both two- and four-door models and the choice of two available four-wheel-drive systems bore the Cherokee name. The enthusiasm for it has yet to subside. "Its rugged utility and fad-free looks make it a perennial favorite," says Automobile Magazine. Authenticity and four-wheel-drive leadership inspire confidence out on the trail. Rest assured, this heritage is standard on every 4x4 Jeep Cherokee.



A Black Cherokee Sport near Makua, Oahu, Hawaii.



A Silverstone Cherokee Classic near Honokahau Bay, Maui, Hawaii.

Tough terrain brings out the best in Jeep Cherokee. Two proven four-wheel-drive (4WD) systems get a lot of the credit. Selec-Trac® full-time 4WD, standard on 4WD Limited and optional on Classic and Sport (equipped with the four-speed automatic transmission), offers a convenient 4 FULL-TIME mode that allows you to leave 4WD engaged year-round, over all road surfaces. With Command-Trac® part-time 4WD, standard on SE, Sport and Classic 4WD models, you shift into 4WD whenever extra traction is required, then must shift back to two-wheel drive when dry pavement resumes.

With a sturdy Quadra-Link front suspension and up to 11.7 inches of running ground clearance, Cherokee can tackle most terrain without the undercarriage making contact with the ground. The optional Up Country Suspension Group for 4WD models adds: tow hooks (two front and one rear); the Skid Plate Group — which encases Cherokee's undercarriage with steel skid plates that help protect the front suspension, transfer case and fuel tank from damage; a Trac-Lok limited-slip rear differential — which automatically distributes the available rear torque to the rear wheel that provides the most traction, and an off-road suspension.

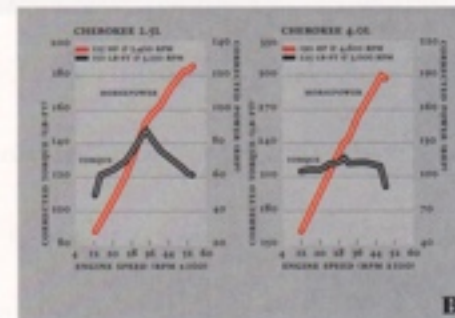


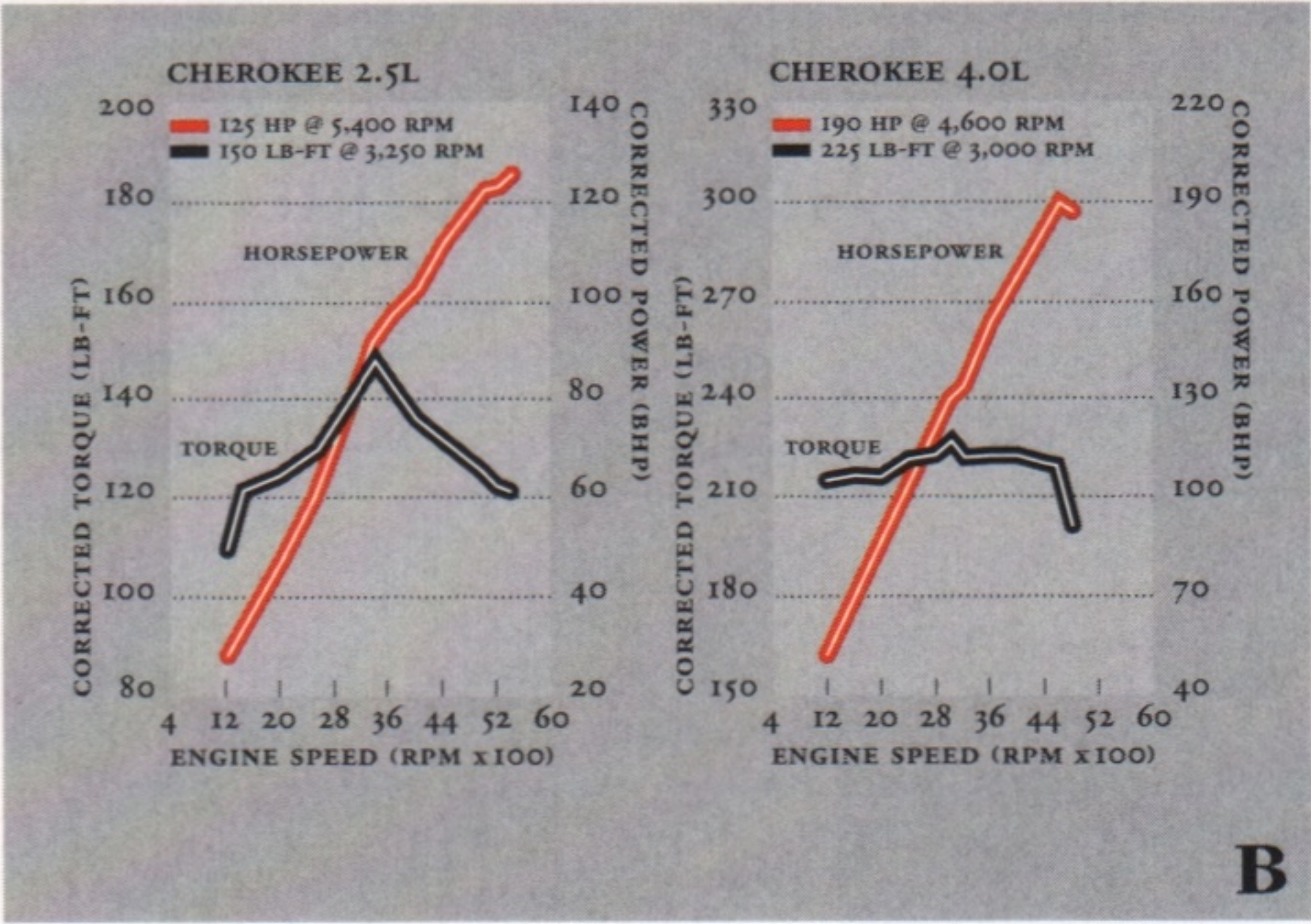


A Patriot Blue Cherokee Limited in Avalu Bay, Maui, Hawaii.

For this versatile performer, power serves many functions. The mighty 4.0L Power Tech I-6 engine (standard on Sport, Classic and Limited, optional on SE) gives Cherokee passing power and quick acceleration for the open road, pulling power for a boat or travel trailer and plenty of low-end torque off-road. A four-speed automatic transmission is standard on Classic and Limited (it's optional on I-6-equipped SE and Sport models), while a five-speed manual overdrive is standard on SE (where it's teamed with a 2.5L Power Tech I-4 engine) and Sport. An optional three-speed automatic is available on I-4 equipped, two-wheel-drive SE models.

A) The in-line design of Cherokee's 4.0L Power Tech I-6 engine supplies peak torque at a usable, low-speed range. Team it with the 4-speed automatic transmission and Trailer Tow Group and you can tow up to 5,000 pounds. B) Output for Cherokee's 2.5L Power Tech I-4 engine is 125 horsepower and 150 pound-feet of torque. For the 4.0L Power Tech I-6: 190 horsepower and 225 pound-feet of torque.





PREMIUM ACCOMMODATIONS



The refined driving environment of Cherokee Limited includes a leather-wrapped steering wheel with integral speed control switches, as well as door trim-mounted, illuminated controls for the exterior mirrors, power windows and door locks.



A



B

Properly secure all cargo.

To safely accommodate you, Next Generation driver and front-passenger air bags* are standard. Antilock brakes are optional on models equipped with the 4.0L Power Tech I-6 engine, while an available Sentry Key™ Engine Immobilizer system makes it virtually impossible to start Cherokee without a valid encoded key.

A) To make the standard leather-trimmed seating of Cherokee Limited even more accommodating, select the heated seats option for the driver and front-seat passenger. In addition to the standard power driver's seat, this option also adds a power passenger seat. Limited Highland Grain leather trim shown in Camel. B) With the rear seat folded down, there's 69.0 cubic feet of cargo space available. Fold it up and 32.9 cubic feet are at your disposal. Cherokee Classic Grenoble cloth interior shown in Agate.

*Certified to the Federal Regulations that allow less forceful air bags. Always use seat belts. Remember a backseat is the safest place for children.

COLOR AND TRIM



Fusion vinyl.
Standard on SE.
Shown in Agate,
also available
in Camel.



15"x7" Six-Spoke Styled Steel
(Standard: SE)

Black



Flame Red



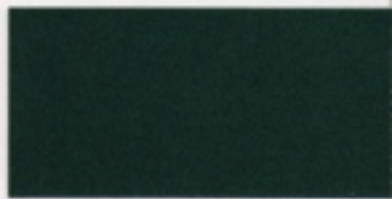
15"x7" Full-Face Steel
(Standard: Sport)

Stone White



Gilmore cloth.
Standard on Sport,
optional on SE.
Shown in Agate,
also available
in Camel.

Forest Green Pearl Coat



15"x7" Ecco Cast Aluminum,
optional on Sport, available on
SE within the Wheel Plus Group
(on Sport models with Desert
Sand exterior paint Ecco wheel
is painted Desert Sand)

Medium Fern Green
Pearl Coat



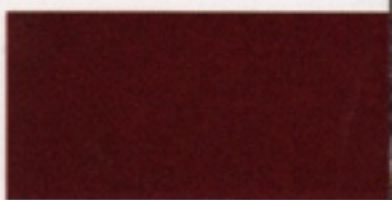
Grenoble cloth.
Standard on Classic.
Shown in Agate,
also available
in Camel.

Desert Sand Pearl Coat



16"x7" Icon Cast Aluminum
Dark Argent
(Standard: Classic)

Sienna Pearl Coat



Highland Grain
leather trim.
Standard on
Limited. Shown in
Camel, also
available in Agate.

Silverstone Metallic



16"x7" Icon Cast Aluminum
Sparkle Silver
(Standard: Limited)

Patriot Blue Pearl Coat



JEEP® WRANGLER

Out there somewhere is a slice of paradise. Crossed by stream, bounded by rock, but untouched by asphalt. Access is earned — only those in a Jeep Wrangler may enter. The sure knowledge of how to take you there is encoded in Wrangler, burned into its being by nearly 60 years of doing things the hard way. As noted in Automobile Magazine, "To drive a Wrangler is to drive a piece of history." Where are your keys?



A Flame Red Wrangler SE near Opihikao, Hawaii.



A Solar Yellow Wrangler Sport near Kaimu Kalapana, Hawaii.

Rock-solid credentials back Wrangler's go-anywhere capability. All models are equipped with Command-Trac[®], a shift-on-the-fly part-time 4WD system. "Shift-on-the-fly" means you can shift from 2WD to 4WD high range at speeds up to 55 mph. "Part-time" means you only engage 4WD when you need extra traction. Wrangler's Quadra-Coil[™] suspension soaks up bumps and, in rocky terrain, offers enough articulation to help keep all four wheels on the ground. Power to roam comes from the standard 4.0L Power Tech I-6 engine on Sport and Sahara or the standard 2.5L Power Tech I-4 engine on Wrangler SE.

A) 4.0L Power Tech I-6 engine delivers 181 horsepower and 222 pound-feet of torque. It's standard on Sport and Sahara. B) Wrangler's high crawl ratio allows it to creep over rocks at very low speeds, while standard steel skid plates help protect the transfer case and fuel tank underneath. For even more off-road brawn, a rugged Dana 44-3 rear axle with 3.73:1 ratio is optional on Wrangler Sport and Sahara. A Black Wrangler Sahara with Dark Tan hardtop is shown.



A



B

INTERIOR ACCOMMODATIONS



Wrangler Sahara Trailcloth interior in Dark Green/Camel.



Wilderness outside. Comfort inside. What better way to experience the unpaved world. Reclining, high-back bucket seats hold you in place on the trail, while bi-level air circulation allows heat or cool air to be directed up top or down below at the same time. Available speed control means less stress getting home.

A) New this year, an AM/FM stereo radio with cassette player is standard on Sport (shown) and available on SE models. B) "You know the Wrangler is serious about getting down and dirty when you learn the interior is designed for a complete hose out," *Automobile Magazine* said. C) With the convenient Dual-Top option, you can order both the soft top and the hardtop at the same time you order your vehicle (Dark Tan soft top shown; also available in Stone White or Black). Hard doors with roll-up windows are also included with this option.

COLOR AND TRIM



Fusion vinyl.
Standard on SE
and Sport. Shown in
Camel, also available
in Agate.



15"x6" Styled Steel
(Standard: SE)



15"x7" Full-Face Steel
(Standard: Sport, Optional: SE)



15"x7" Grizzly Cast Aluminum
(Optional: SE, Sport)

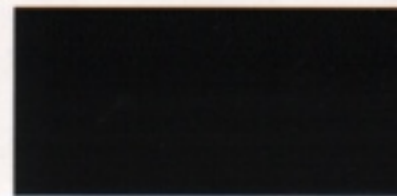


15"x8" Canyon Cast Aluminum
(Optional: Sport, Sahara, only
available within the 30-inch
Tire and Wheel Group)

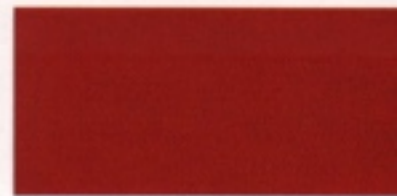


16"x7" Ultra Star
Cast Aluminum
(Standard: Sahara)

Black
SE, Sport, Sahara



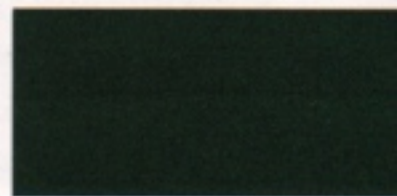
Flame Red
SE, Sport



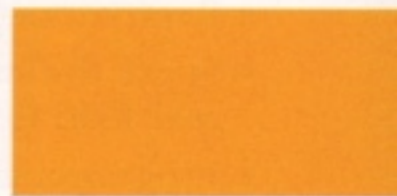
Stone White
SE, Sport, Sahara



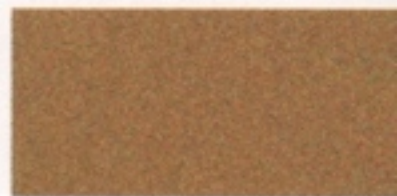
Forest Green Pearl Coat
SE, Sport, Sahara



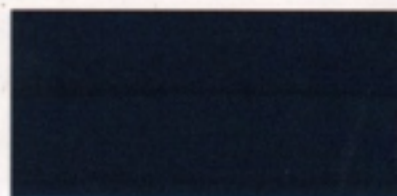
Solar Yellow
SE, Sport



Desert Sand Pearl Coat
SE, Sport, Sahara



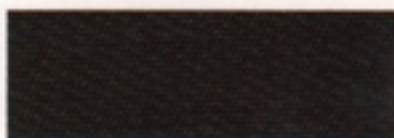
Patriot Blue Pearl Coat
SE, Sport



Pueblo cloth.
Optional on SE
and Sport. Shown in
Agate, also available
in Camel.



TOP COLORS



Black

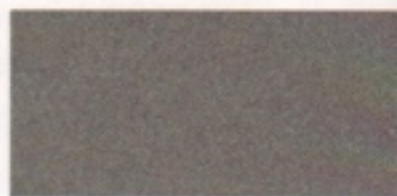


Stone White



Dark Tan

Silverstone Metallic
SE, Sport



Medium Fern Green
Pearl Coat
SE, Sport



Trailcloth.
Standard on Sahara.
Available only in Dark
Green/Camel.



JEEP GRAND CHEROKEE

FEATURES

Grand Cherokee Laredo selected standard features:

- 4.0L Power Tech I-6 engine
- Four-speed automatic transmission
- Selec-Trac® NV242 full-time 4WD (on 4WD models)
- 16-inch x 7-inch Sport cast aluminum wheels
- P225/75R16 Goodyear Wrangler ST all-season tires
- Four-wheel disc antilock brakes (ABS)
- Quad-halogen headlamps with delay feature
- 20.5-gallon fuel tank with brush guard and tethered fuel cap
- Stainless steel exhaust system
- Roof rack with adjustable bows
- Bright grille
- Flipper liftgate glass
- Rear window defroster
- Rear window wiper/washer
- Spare tire mounted inside under rear load floor
- Programmable overhead console with trip computer, compass, temperature
- Next Generation driver and front-passenger air bags*
- Child-protection rear door locks
- Brake-Park interlock
- Power door locks with illuminated controls
- Power windows with illuminated controls and driver one-touch-down feature
- Dual foldaway power remote exterior mirrors with illuminated controls
- Air conditioning
- AM/FM stereo radio with cassette player and six speakers
- Electronic speed control
- Intermittent windshield wipers
- Tilt steering column

*Certified to the Federal Regulations that allow less forceful air bags. Always use seat belts. Remember a backseat is the safest place for children.

- Floor-mounted center console
- Dual cloth-covered visor vanity mirrors with pull out sunshade
- Sunscreen glass
- Smoker's Group
- Sentry Key™ Engine Immobilizer
- Easy-fold rear seat with height-adjustable folding outboard head restraints
- Height-adjustable shoulder belts for front and rear outboard seating positions
- 40/60 split-folding rear seats

Grand Cherokee Limited adds these selected standard features:

- 16-inch x 7-inch Silverblade cast aluminum wheels
- P245/70R16 Goodyear Eagle LS all-season performance tires
- Quadra-Trac II™ NV247 on-demand 4WD (on 4WD models)
- Body-color grille, fascias and door handles
- Fog lamps
- Power mirrors with heat, memory and driver-side autodimming features
- Infrared Dual Zone Climate Control
- HomeLink® Universal Transceiver
- Jeep Memory System
- Royale leather-trimmed seating with 10-way power controls
- Seats with memory feature and seatback map pockets
- Leather-wrapped steering wheel with radio controls
- AM/FM stereo radio with CD and cassette players, six speaker Infinity Gold™ Sound System, 180-watt power amplifier and memory feature
- Luxury Group: includes autodimming rearview mirror and automatic headlamps
- Vehicle Security System
- Rear cargo area power outlet and covered cargo panel storage bin
- Remote keyless entry system with panic button

JEEP CHEROKEE

FEATURES

Cherokee SE selected standard features:

- 2.5L Power Tech I-4 engine
- Five-speed manual transmission
- Command-Trac® NV231 part-time 4WD (on 4WD models)
- 15-inch x 7-inch Styled steel wheels
- P215/75R15 Goodyear Wrangler AP all-season tires
- 20-gallon fuel tank with tethered cap
- Next Generation driver and front-passenger air bags*
- Child-protection rear door locks (four-door models only)
- Brake-Park or clutch-starter interlock
- Full-center floor console with cup holders, covered storage, padded armrest and storage bin with slots for CDs/cassettes
- AM/FM stereo radio with cassette player and four speakers
- Height-adjustable front shoulder belts with traveling inboard buckles
- Intermittent windshield wipers
- Rear window defroster

Cherokee Sport adds these selected standard features:

- 4.0L Power Tech I-6 engine
- 15-inch x 7-inch Full-face steel wheels
- P225/75R15 Goodyear Wrangler RT/S outline white letter all-terrain tires
- Body-color bumpers, grille, headlamp bezels and fender flares
- Black bodyside molding

Cherokee Classic adds these selected standard features:

- Four-speed automatic transmission
- 16-inch x 7-inch Dark Argent Icon cast aluminum wheels
- P225/70R16 Goodyear HP vertically serrated black sidewall all-season tires

*Certified to the Federal Regulations that allow less forceful air bags. Always use seat belts. Remember a backseat is the safest place for children.

JEEP WRANGLER

FEATURES

- Monochromatic exterior appearance
- Power remote exterior mirrors
- Roof rack
- Intermittent rear wiper/washer
- Leather-wrapped steering wheel

Cherokee Limited adds these selected standard features:

- 16-inch x 7-inch Sparkle Silver Icon cast aluminum wheels
- Selec-Trac® NV242 full-time 4WD (on 4WD models)
- Bodyside paint stripe
- Six-way power driver's seat
- Air conditioning
- Overhead console with compass, trip computer, front and rear map/reading lamps and storage for a pair of sunglasses and garage door opener
- Electronic speed control
- Power Equipment Group: includes power windows, power door locks and remote keyless entry system with two key fobs
- Light Group: includes map/dome, courtesy under instrument panel, cargo area and engine compartment lamps, headlamp time delay and dual illuminated visor vanity mirrors (cargo area lamp is standard on Sport, Classic and Limited)
- Height-adjustable steering column
- Deep-tinted rear door, rear quarter and liftgate glass
- Bright badging, grille, headlamp bezels and license plate brow

Wrangler SE selected standard features:

- 2.5L Power Tech I-4 engine
- Five-speed manual transmission
- Command-Trac® NV231 part-time 4WD
- Quadra-Coil™ suspension includes live solid axles, locating arms, coil springs, track and stabilizer bars and gas-charged shock absorbers
- 15-inch x 6-inch Styled steel wheels
- P205/75R15 Goodyear Wrangler RT/S all-terrain tires
- Fuel tank and transfer case skid plates
- 19-gallon fuel tank with tethered cap
- 500-ampere maintenance-free battery
- Next Generation driver and front-passenger air bags* with weatherized front-passenger air bag on/off switch
- Brake-Park or clutch-starter interlock
- Power steering
- Locking glove box
- Fusion vinyl reclining front bucket seats with tip-and-slide front-passenger seat
- Height-adjustable front shoulder belts with traveling inboard buckles
- Mini-floor console with cup holder and tray
- Easy-fold soft top
- Low fuel warning lamp
- Dual swingaway mirrors
- Removable front carpeting

Wrangler Sport adds these selected standard features:

- 4.0L Power Tech I-6 engine
- 15-inch x 7-inch Full-face steel wheels

- P215/75R15 Goodyear Wrangler RT/S all-terrain tires
- AM/FM stereo radio with cassette, clock and four speakers
- Fold-and-Tumble™ rear seat
- Removable cargo area carpeting

Wrangler Sahara adds these selected standard features:

- 16-inch x 7-inch Ultra Star cast aluminum wheels
- P225/70R16 Michelin LT-X, M+S tires
- Three tow hooks, two front and one rear
- Electrical Group: includes 117-ampere alternator, 600-ampere maintenance-free battery
- Round halogen fog lamps
- Body-color fender flares with rocker molding
- Bodyside steps
- "Sahara" spare tire cover
- Trailcloth seating with front seatback map pockets and EZ access driver seat
- AM/FM stereo radio with CD player, clock and four speakers
- Leather-wrapped steering wheel
- Height-adjustable steering column
- Intermittent windshield wipers
- Front floor mats
- Convenience Group: includes courtesy lamp under instrument panel, engine compartment lamp and a full-center floor console

*Certified to the Federal Regulations that allow less forceful air bags. Always use seat belts. Remember a backseat is the safest place for children. Rearward-facing child seats can be used in the front seat only with the passenger air bag turned off.



Jeep Provisions



To begin any adventure, you need gear that has the same characteristics as your Jeep® vehicle: authenticity, strength

and capability. You'll find such a collection of high-performance wearables, sports equipment, luggage, electronics, timepieces and much more in the pages of our *Jeep Provisions* catalog. For the latest copy, call 1-800-789-JEEP and discover the reach of this legendary brand.

Jeep Jamborees

"I bought my Jeep vehicle nine months ago and had no idea of the fun, adventure and family environment that I was in for. You are a great bunch ... Thanks for your help and patience. I'll be back next year. I am hooked!"

— James E. Davis, Nebraska



If you long to put your 4x4 Jeep vehicle through its paces, then sign up for a Jamboree and prepare for a weekend like no other. Over 35 Jeep Jamborees are scheduled in 2000 across North America. If you're an off-road enthusiast (or secretly aspire to be), call 1-800-925-JEEP and request the *Jeep Jamboree USA 2000 Guidebook* (available December 1999).

Jeep Accessories by Mopar

To enhance the performance and appearance

of your Jeep® vehicle, go with the only accessories that

are tested to meet our standards for fit, performance and

durability — genuine Jeep accessories from Mopar.

Created by the very engineers who designed your vehicle,

Mopar Accessories installed by the dealership at delivery

are covered by the same 3/36 Bumper-to-Bumper

Limited Warranty* (at right). Looking to accessorize?

There's only one choice. Get real. Get Mopar.



All product illustrations, specifications and competitive comparisons are based upon current information at the time of publication approval. Although descriptions are believed to be correct, complete accuracy cannot be guaranteed. DaimlerChrysler Corporation reserves the right to make changes at any time, without notice or obligation, in prices, specifications, equipment, colors and materials, and to change or discontinue models. Some of the equipment shown or described throughout this catalog is available at extra cost. See your dealer for the latest information.

CUSTOMER ONE CARE™

At DaimlerChrysler Corporation, our commitment to complete customer satisfaction is evident in every sport-utility vehicle we sell. Long after a vehicle is driven away from the showroom, we will be there to ensure that our customers remain pleased with every new-vehicle purchase. To prove this commitment, all Jeep vehicles are covered by the 3/36 Customer One Care Plan*, which includes a 3-year/36,000-mile (whichever comes first) Bumper-to-Bumper Limited Warranty† and Roadside Assistance‡ for 3 years or 36,000 miles. Roadside Assistance provides 24-hour, 7-day-a-week Emergency Road Service, contacted by a nationwide toll-free number. A 5-year or 100,000-mile Outer-Panel Rust-Through Limited Warranty covers the cost of all parts and labor needed to repair exterior sheet metal panels if perforated by corrosion. The 3/36 Customer One Care Plan stays with the vehicle, transferring automatically to subsequent owners at no cost during the warranty period.

*See your dealer for additional details and a copy of this limited warranty.

†Covers the complete vehicle against defects in materials and workmanship. Excludes wiper blades, clutch disc and brake linings, brake rotors and drums, normal maintenance items (these items are covered against defects for 12 months or 12,000 miles, whichever comes first) and tires (covered by their own manufacturer's warranty).

‡Roadside Assistance services are provided by Cross Country Motor Club, Inc. (In California, Cross Country Motor Club of California, Inc.)

LEASING

Leasing is a popular way to finance a new vehicle, and the **Gold Key Lease** offered by Chrysler Financial Company L.L.C. has the flexibility to fit your vehicle choice and your lifestyle. Lease payments are typically lower and for a shorter term than conventional financing. At lease end, you can: 1) turn the vehicle in and lease a new one; 2) buy the vehicle and keep it; 3) buy the vehicle and sell it for a possible profit. If the idea of driving the vehicle you want and paying less for it sounds great, ask your dealer about Gold Key Lease. **Gold Key Plus** is a great alternative to leasing for customers who want low payments and pride of vehicle ownership — Gold Key Plus offers both. Decide how long the vehicle will be driven and the trade-in value is guaranteed (less excess mileage and wear and tear). Ask your dealer for complete details. **Commercial Finance Options (CFO)** offers several finance and lease options to small and midsize businesses, municipalities and small fleet operators. A full range of automotive financing is available through Chrysler Financial, providing flexible payment plans and finance products for qualified buyers. Many of these plans can be customized to fit your particular budget and make your new vehicle even more affordable. The **College Graduate Program** is especially attractive to those just beginning their careers. Ask your salesperson for details about any of the above plans.

Chrysler Financial Company L.L.C. programs are offered subject to availability and state and local laws.

For information on leasing, visit www.chryslerfinancial.com

DAIMLERCHRYSLER SERVICE CONTRACTS

Additional protection for owners is available through optional DaimlerChrysler Service Contracts. These service plans are available in a variety of time and mileage combinations to meet your driving needs. Ask your dealer for more information or call 1-800-442-2666.

Jeep, Grand Cherokee, Cherokee, Wrangler, the Jeep Wrangler radiator grille design, Quadra-Drive, Vari-Lok, Quadra-Trac II, Quadra-Coil, Selec-Trac, Sentry Key, Command-Trac, Customer One Care and Gold Key Lease are trademarks of DaimlerChrysler.

HomeLink is a registered trademark owned by Johnson Controls, Inc.

Infinity Gold and Infinity are trademarks of Infinity Systems, Inc.

For 14 years, we have partnered with Tread Lightly! to promote responsible off-road driving. As a founding member and official sponsor, we urge all Jeep vehicle owners to follow Tread Lightly! guidelines such as "Use common sense and stay on marked trails." To learn more about how you can participate, visit Tread Lightly! at www.treadlightly.org or call them at 1-800-966-9900. By protecting our land for the future, we'll all be richly rewarded.

treadlightly!
LEAVING A GOOD IMPRESSION

Jeep

THERE'S ONLY ONE

For more information, visit us at www.jeep.com
or call 1-800-925-JEEP.

Jeep is a registered trademark of DaimlerChrysler.

Form no. 74-383-2041 8/99 (1000M) Litho in USA