

CHRYSLER



IMPORTED FROM DETROIT®

THE 2013  
CHRYSLER  
T&C  
TOWN & COUNTRY

1800 CHRYSLER | CHRYSLER.COM

CHRYSLER IS A REGISTERED TRADEMARK OF CHRYSLER GROUP LLC.

74-383-2311



2013 TOWN & COUNTRY  
IMPORTED FROM DETROIT®

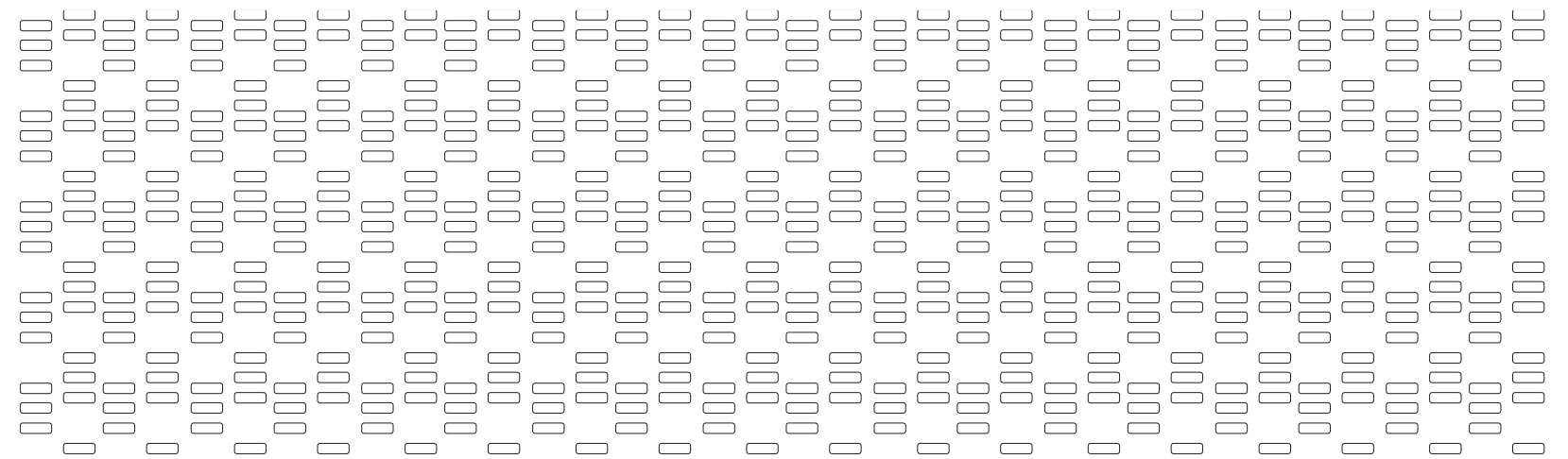
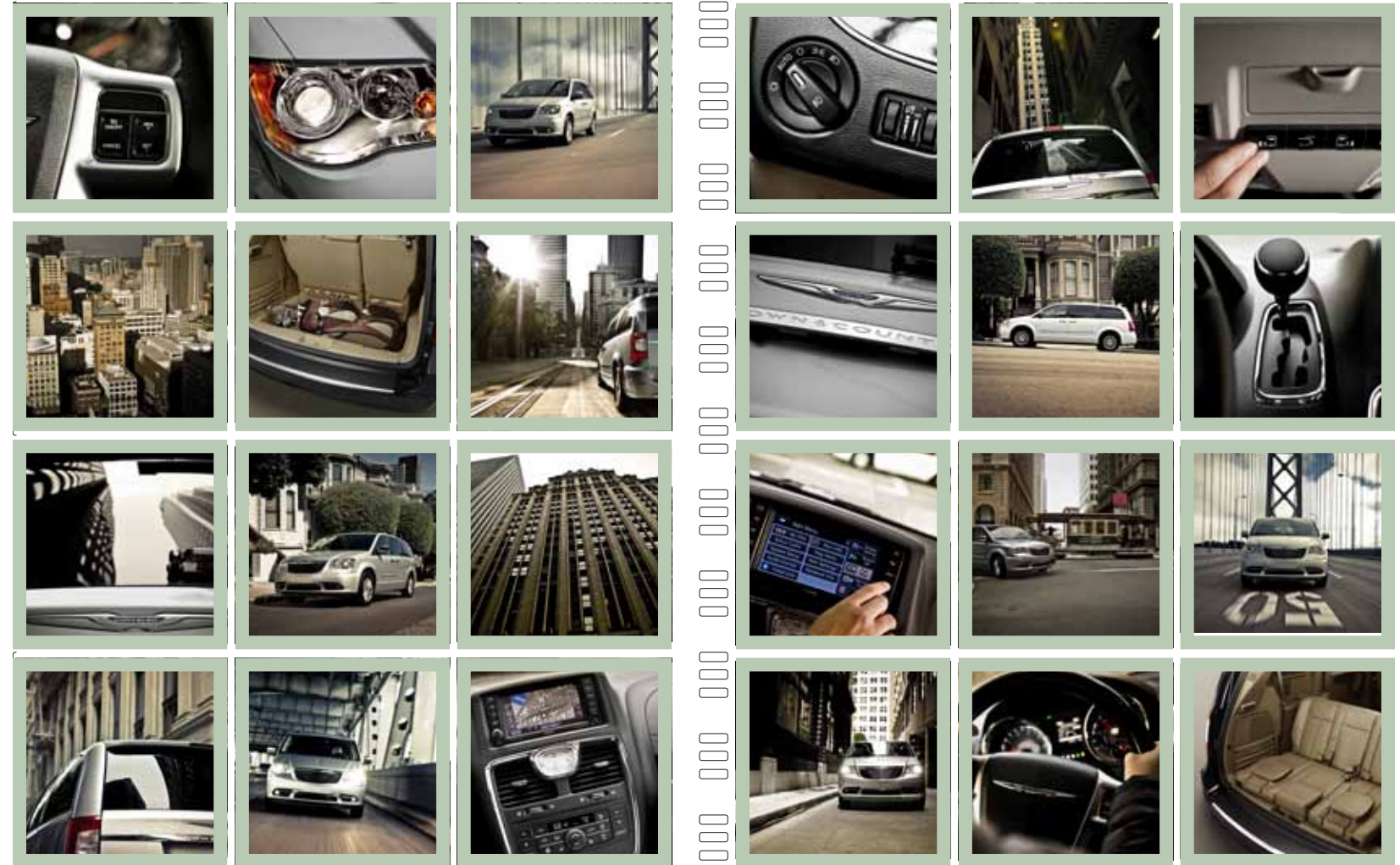
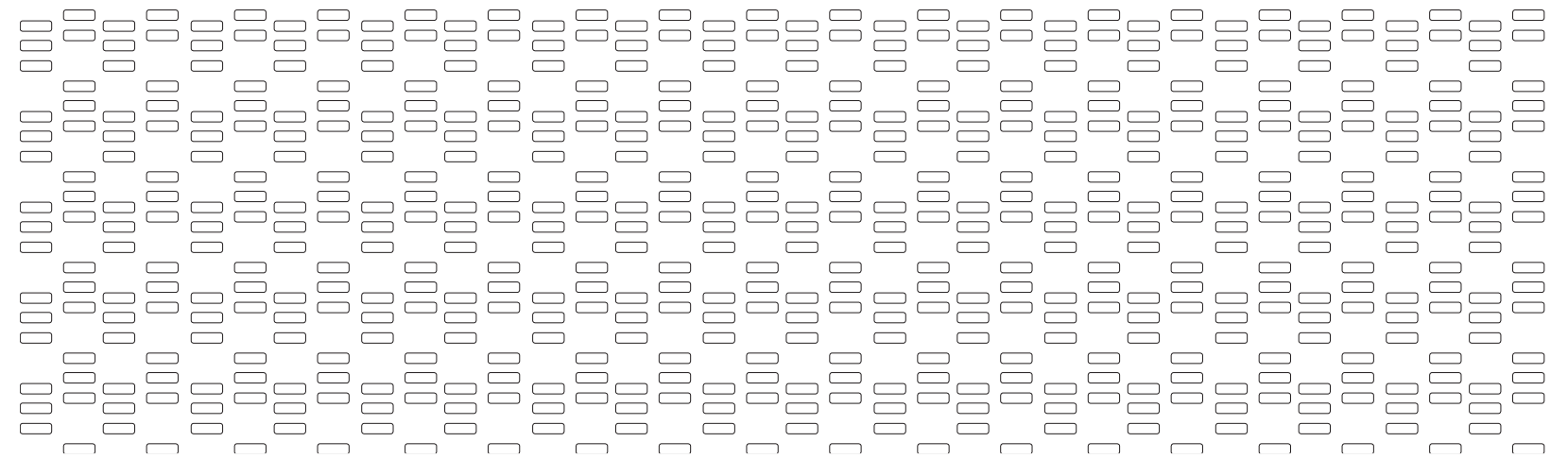
A silver Chrysler PT Cruiser minivan is parked on a city street. In the background, a trolley is blurred, suggesting motion. The street is lined with tall buildings, including a prominent one with arched windows on the left. The overall scene is an urban setting.

# ORIGIN

FAMILY DYNAMICS ARE FOUND  
IN THE MOST UNEXPECTED PLACES.

IT SPANS NEEDS AND DEMOGRAPHICS AND DUTIES WITH AN EASE LIKE THE GREATEST OF BRIDGES. BUILT AS THE ORIGINAL, IT'S AN ICON OF ADAPABILITY. IT'S A VEHICLE BUILT TO RECOGNIZE THE RESPONSIBILITY OF PROTECTING THOSE IT CARRIES. IT'S A VEHICLE THAT DOESN'T TAKE ITS DUTIES LIGHTLY. AND THAT, IN TURN, ALLOWS THOSE WHO TRUST IT TO DO JUST THAT. THIS IS LUXURY TO BE SHARED. THIS IS INVENTION OF THE HIGHEST ORDER.

THIS IS A LEADER, TRIED, TESTED AND TRUE.  
CHRYSLER TOWN & COUNTRY..





IT'S NOT JUST WHERE YOU TAKE IT.  
IT'S WHERE IT STANDS.

THERE'S NO SUCH THING AS AN AVERAGE FAMILY. Town & Country minivan drivers have hauled kids, pets, packages, and cargo. They've traveled cross-country and across town, day in and year out. This is why we asked them about their experiences with the Chrysler Town & Country. On real-world roads. In everyday life. This is the test of ownership. The test of abundant safety and security technologies, comfort and convenience features, performance and efficiency, and the legendary Stow 'n Go® seating and storage system. And this is why Town & Country is still part of America's best-selling family of minivans ever,\* year in and year out.

EVERY DETAIL IS DESIGNED WITH PURPOSE. From the utility of its versatility to the simple luxury of leather seating surfaces, Town & Country delivers the rarest blend of purpose and pampering. It's what you'd expect from a premium luxury vehicle. The fact that it offers over 30 exclusive and best-in-class claims<sup>2</sup> may not surprise you either.

\*A note about this brochure: All disclaimers and disclosures can be found in the back of this catalog.

PURPOSEFUL DESIGN. AESTHETIC UTILITY. TOP-NOTCH MATERIALS AND TECHNOLOGY. FORM AND FUNCTION. FLUID INTEGRATION OF SHAPE. CLASSIC SUBTLETIES. MODERN PERFORMANCE AND LUXURY.



**CUTTING EDGE.** The integrated instrument panel includes a large vehicle information screen with a unified look and touches of chrome around the climate controls, shifter, and cluster rings. The gauges are positioned for easy viewing, while the steering wheel houses cruise and audio controls for eyes-on-the-road, hands-on-the-wheel safety and convenience. The standard Uconnect® hands-free voice command system means things happen just because you say so. And if you simply want to enjoy the feel of soft leather and smooth real wood trim or the warmth of Limited's standard heated steering wheel — you always have that option.

**NOT CUT CORNERS.** From components to cabin appointments, this is a vehicle that's been thoroughly thought out. The Pentastar® engine boasts durability-enhancing features, like an advanced oil-filter system that features an incinerable filter element. The engine is also Flex Fuel capable, allowing the option of using either gasoline or ethanol (E85) fuel. The easy-to-operate gear shifter is conveniently placed adjacent to the steering wheel for enhanced ergonomics. Town & Country is also the only minivan in its class<sup>2</sup> with the Fuel Economizer feature that alters transmission shifts to help improve real-world fuel efficiency up to 25 mpg highway.



UCONNECT®  
MAKES GETTING THERE A DESTINATION.



THE INTUITIVE, TOUCH-SCREEN HUB FOR ALL YOUR MEDIA, COMMUNICATION, AND NAVIGATION.

**ENTERTAINMENT.** Manage all of your media with multiple ways to access audio, including Bluetooth® streaming audio, iPod® control with Voice Command, auxiliary input jack, compatible multimedia devices, and rear seat entertainment system with Blu-Ray™ player, gaming console and SiriusXM Satellite Radio.<sup>3</sup> One year of SiriusXM Satellite Radio Service included.

**PHONE.** Uconnect Phone is the in-vehicle, voice-activated communication system that allows you to pair up to seven Bluetooth compatible phones and then talk virtually hands-free. This system is also clever enough to synchronize with your phone's contacts<sup>4</sup> — up to 1,000 entries

**NAVIGATION.** Provides turn-by-turn voice guidance and visual display. It features the Garmin® intuitive user interface, bringing the Garmin handheld experience to a factory in-dash radio. With SiriusXM Traffic,<sup>3</sup> you'll get detailed information on traffic flow, construction, and road closures.

**VOICE COMMAND.** It simplifies driving by letting you keep your eyes on the road and your hands on the wheel. Use your voice to select AM/FM radio stations, SiriusXM Satellite Radio<sup>3</sup> channels, and make calls.

**WEB.** Put the power of high-speed Internet in your vehicle with Uconnect Web,<sup>5</sup> making your vehicle a mobile hotspot. Passengers can use multiple devices at the same time. There's no need for cell cards or software with this Authentic Chrysler Accessory by Mopar®. It's all wireless.

**SIRIUSXM TRAVEL LINK.<sup>3</sup>** Brings national weather forecasts, fuel prices for local gas stations, in-game and final sports scores, weekly sports schedules, local movie theater listings, and local ski conditions right to your vehicle.

**SIRIUS SELECT<sup>3</sup> — OVER 130 CHANNELS.** This is what satellite radio is all about. Enjoy commercial-free music, plus sports, news, talk, and entertainment. And get a selection of premium programming, including every NFL game, Howard Stern, every NASCAR® race, Martha Stewart, and more. Visit [www.siriusxm.com](http://www.siriusxm.com) for details.

GO TO [DRIVEUCONNECT.COM](http://DRIVEUCONNECT.COM) TO FIND OUT MORE.





APPRECIATE THE DESIGNED-IN SOUND OF EITHER A STANDARD SIX-SPEAKER SYSTEM OR THE AVAILABLE ∞INFINITY® NINE-SPEAKER SYSTEM WITH SUBWOOFER.

THE SOUNDTRACK OF A MODERN FAMILY.

IT DELIVERS SUPERB QUALITY SURROUND SOUND WITH AN 11-CHANNEL AMPLIFIER AND 506 WATTS OF POWER AND IS STANDARD ON LIMITED.

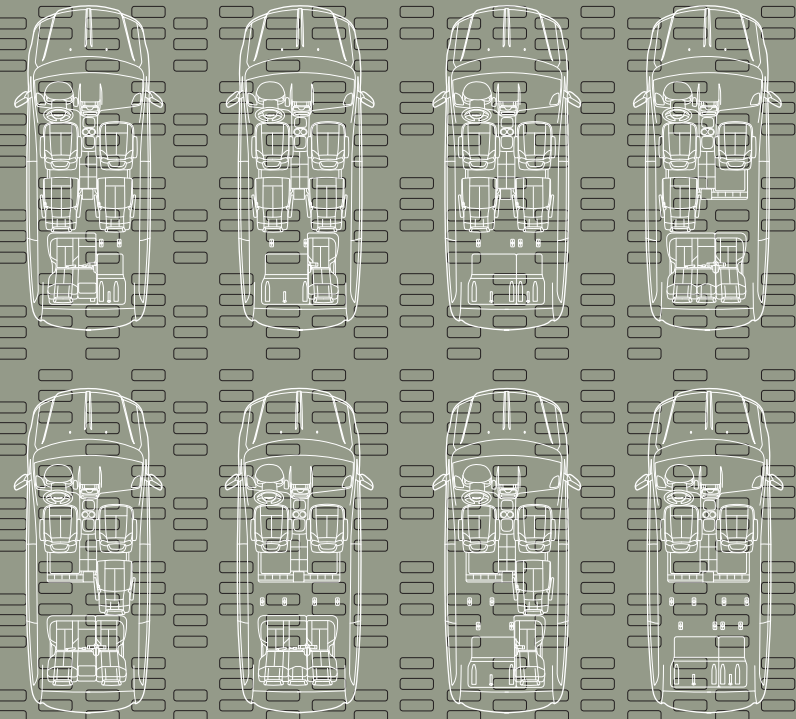
THE BEST FAMILY ENTERTAINMENT SYSTEM IN ITS CLASS.<sup>2</sup>

THE BEST MADE EVEN BETTER WITH BLU-RAY.<sup>TM</sup> Let this premium level of entertainment features keep your passengers occupied. The 2013 Town & Country introduces an all-new class-exclusive<sup>2</sup> Blu-Ray Disc player to the available dual DVD system. With a standard single DVD system, two available nine-inch new VGA high-resolution screens that flip down from the overhead console, two USB ports, all-new HDMI connectivity, and game-console inputs, the kids don't have to settle on just one thing to watch.


The video system can be operated from either the rear-seat entertainment unit, the wireless remote, or the radio head unit. The self-contained entertainment system is located in the overhead rail, which also contains storage for the wireless headphones and remote. LED Blue Sapphire halo lighting glows from the overhead rail, providing a relaxing environment for viewing. SiriusXM Satellite Radio<sup>3</sup> is also standard on all models.



IT STANDS FOR VERSATILITY.



STOW 'N GO® WITH THE MOST INNOVATIVE SEATING AND STORAGE IN ITS CLASS.<sup>2</sup> Luxury need not come at the expense of practicality. The fold-and-stow second- and third-row seats fold individually into floor bins, allowing you to go from seven seats to two, or any combination in between. With all seats stowed, the Town & Country yields a flat cargo floor and 144.2 cubic feet of storage for easy loading without ever having to remove a seat. When the seats are in their upright position, in-floor bins store a multitude of items, from laptops and purses to toys, backpacks, sporting equipment, sleeping bags, and shopping bags. The available premium Super Console provides power outlets, cup holders, covered storage, and more to both first- and second-row passengers. The 2013 Town & Country also includes the class-exclusive<sup>2</sup> Stow 'n Place® roof-rack system, which can carry up to 150 pounds of cargo. The convenience of folding crossbars that attach to the side rails when not in use improves aerodynamics.



TOWN & COUNTRY HAS THE MOST CONCEALED STORAGE SPACE IN ITS CLASS.<sup>2</sup> Constructed with the most Quiet Steel<sup>®</sup> in its class,<sup>2</sup> the exclusive Stow 'n Go<sup>®</sup> is part of the best-in-class<sup>2</sup> storage system. It includes in-floor storage bins, a class-exclusive tailgate seating option,<sup>2</sup> and available class-exclusive one-touch power-folding third-row seats<sup>2</sup> for more possibilities than ever.

TOWN & COUNTRY LIMITED STANDS AS THE MOST LUXURIOUS MINIVAN IN ITS CLASS.<sup>2</sup>

It combines standard features such as Nappa leather-trimmed seating throughout the cabin, a class-exclusive<sup>2</sup> heated steering wheel, eight-way power driver and front-passenger seats, heated front- and second-row seats, seating for seven with available luxury second-row seats. The 2013 Town & Country offers an available class-exclusive<sup>2</sup> Super Console, which features a large driver-accessible storage area and another large storage drawer accessible by both first- and second-row passengers. Both areas can be covered with a sliding door to keep travel items out of sight. Two power outlets, perfect for charging media devices, are within easy reach of the driver. Two of the console's four cup holders hold 12-oz cans or 1-liter bottles. The standard Three-Zone Automatic Temperature Control (ATC) system keeps everyone comfortable via its electronic thermostats. The push of a button activates the available class-exclusive<sup>2</sup> heated steering wheel.

## EXCLUSIVE STOW 'N GO.<sup>®2</sup>



ONE MOTION. The simple fold-and-stow system allows the head restraint to fold down automatically for easier operation and reveals what makes Town & Country legendary: class-exclusive<sup>2</sup> Stow 'n Go seating with in-floor storage bins and fold-in-floor second- and third-row seats. When the seats are in their upright position, in-floor bins are available to accommodate carry-ons.



## AVAILABLE THIRD-ROW POWER SEATS.



AVAILABLE CLASS-EXCLUSIVE<sup>2</sup> ONE-TOUCH POWER-FOLDING THIRD-ROW SEATS. With the touch of a button, the available class-exclusive<sup>2</sup> one-touch power-folding third-row 60/40 split-bench seat folds directly into the floor. This feature also includes obstacle detection<sup>6</sup> to automatically pause if something is detected within the seat's path of motion.



283-HP BEST-IN-CLASS  
POWER AND TORQUE<sup>2</sup>

IT STANDS READY FOR THE WORLD. When getting everyone there confidently is the only option, you'll know why it matters to have a minivan this powerful, thanks to the most advanced engine produced by Chrysler Group LLC. The standard 3.6L Pentastar<sup>®</sup> V6 engine with Variable Valve Timing (VVT) delivers best-in-class<sup>2</sup> 283 horsepower, yet efficiently provides an EPA estimated 17 city/25 highway mpg. It applies some of the most advanced automotive engine technology available today for an exceptional blend of high torque, fuel efficiency, low emissions, and first-rate noise, vibration, and harshness control.



CONSTANT FORCE RETRACTORS. Seat belt retractors sense vehicle impact and immediately apply pressure to the seat belt to properly position the occupant before the full load of impact is imparted. It then reduces the seat belt load in order to moderate forces during the impact event.

DRIVER'S INFLATABLE KNEE-BLOCKER.<sup>7</sup> This separate air bag located in the lower instrument panel is designed to help position the driver properly for the front air bag.

ACTIVE FRONT-ROW HEAD RESTRAINTS.<sup>8</sup> In the event of a rear-end collision, these restraints automatically move forward and upward to decrease the space between the head restraint and the occupant's head.

ENHANCED ACCIDENT RESPONSE SYSTEM (EARS). This system makes it easier for emergency personnel to see and reach occupants in the event of an accident by turning on interior lighting, flashing hazard lamps, and unlocking doors after air bag deployment. It also shuts off the flow of fuel to the engine.

## ON GUARD.

### SUPPLEMENTAL SIDE-CURTAIN AIR BAGS.<sup>7</sup>

These air bags extend protection to all outboard front- and rear-seat passengers, including third-row outboard passengers. Upon side impact, the system deploys the specific side air bag and curtain required for occupant protection.

ADVANCED MULTISTAGE FRONT AIR BAGS.<sup>7</sup> This feature regulates the amount of force necessary for the front occupants by impact severity, including low-risk deployment.

FRONT-SEAT MOUNTED SIDE AIR BAGS.<sup>7</sup> Additional air bags are integrated into the front seats to offer additional pelvic and thorax protection. The air bags deploy consistently with driver and front-passenger seat positions.

TIRE PRESSURE MONITORING SYSTEM. Individual tire-pressure amounts are displayed in the instrument cluster and alert the driver to tires with high or low pressure.

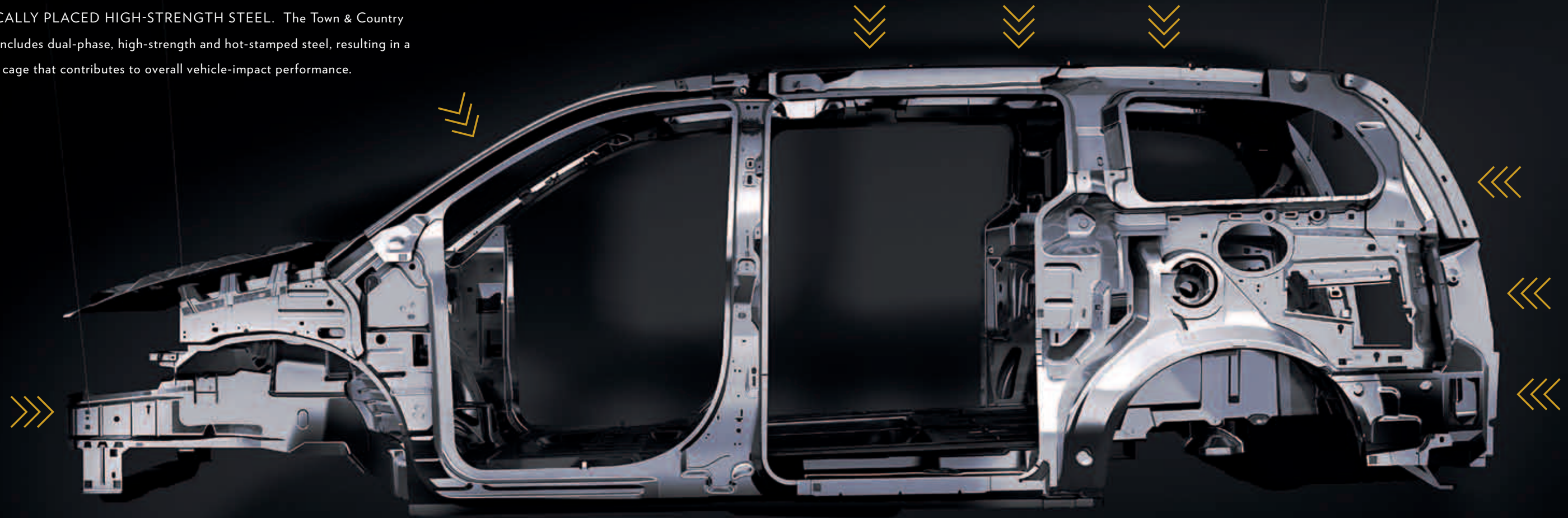
AVAILABLE ACTIVE AND PASSIVE SAFETY AND TECHNOLOGY FEATURES AND OUR CARE FOR FUTURE GENERATIONS MEET YOUR SECURITY STANDARDS.



The class-exclusive<sup>2</sup> available SafetyTec™ Package bundles additional technologically advanced offerings among the over 40 standard and available safety and security features that help to protect what matters most. Because you and your passengers are all unique, it makes sense that your Town & Country is in a class by itself. We call it SafetyTec. You'll call it peace of mind.

AVAILABLE AUTO HIGH BEAM HEADLAMP CONTROLS / FRONT- AND SECOND-ROW HEIGHT-ADJUSTABLE SEAT BELTS / BELT ALERT / AVAILABLE BLIND SPOT MONITORING<sup>9</sup> / AVAILABLE REAR CROSS-PATH DETECTION SYSTEM<sup>10</sup> / PARKVIEW<sup>®</sup> REAR BACK-UP CAMERA<sup>10</sup> / AVAILABLE PARKSENSE<sup>®</sup> REAR PARK ASSIST SYSTEM<sup>10</sup> / AVAILABLE RAIN-SENSING WIPERS / 4-WHEEL ANTILOCK BRAKES / ALL-SPEED TRACTION CONTROL / ELECTRONIC STABILITY CONTROL<sup>11</sup> (ESC) / ELECTRONIC BRAKE ASSIST / POWER SLIDING DOORS WITH OBSTACLE DETECTION<sup>6</sup> / POWER LIFTGATE WITH OBSTACLE DETECTION<sup>6</sup> / FRONT-PASSENGER KNEE BOLSTER<sup>7</sup> / PREMIUM TIRE PRESSURE MONITORING DISPLAY / INTERIOR HEAD-IMPACT PROTECTION / ADVANCED MULTISTAGE AIR BAGS<sup>7</sup> / FRONT-SEAT MOUNTED SIDE AIR BAGS<sup>7</sup> / BRAKE-PARK INTERLOCK / AVAILABLE POWER ADJUSTABLE PEDALS

**STRATEGICALLY PLACED HIGH-STRENGTH STEEL.** The Town & Country architecture includes dual-phase, high-strength and hot-stamped steel, resulting in a strong safety cage that contributes to overall vehicle-impact performance.



**CRUMPLE ZONES.** In the event of an impact, specifically designed front and rear crush zones absorb energy and redirect it away from passengers, helping to reduce the risk of injury.

ENHANCED ACCIDENT RESPONSE SYSTEM (EARS) / LOWER ANCHORS AND TETHERS FOR CHILD SEATS (LATCH) / FRONT-SEAT ACTIVE HEAD RESTRAINTS<sup>8</sup> / SEAT BELT PRETENSIONERS / SENTRY KEY<sup>®</sup> ENGINE IMMOBILIZER / SUPPLEMENTAL SIDE-CURTAIN AIR BAGS<sup>7</sup> / THREE-POINT SEAT BELTS AT ALL SEATING POSITIONS / REMOTE KEYLESS ENTRY / CHILD PROTECTION REAR DOOR LOCKS / CONSTANT FORCE RETRACTORS / OBSERVATION MIRROR / ENERGY-ABSORBING STEERING COLUMN / DRIVER INFLATABLE KNEE-BLOCKER AIR BAG<sup>7</sup> / AUTOMATIC HEADLAMPS / DRIVER'S DOOR PROTECTION BLOCK / SECOND- AND THIRD-ROW HEAD RESTRAINTS / HOMELINK<sup>®</sup> UNIVERSAL GARAGE DOOR OPENER / HEADLAMPS-OFF TIME DELAY / DOOR ALERT / STEERING WHEEL-MOUNTED VEHICLE CONTROLS / TILT-TELESCOPING STEERING COLUMN





**PARKSENSE® REAR PARK ASSIST!**<sup>10</sup> This available feature uses radar technology to detect most obstacles behind the vehicle and gives the driver both visual and audible alerts about those obstacles.

**BLIND SPOT MONITORING (BSM)**<sup>9</sup> Difficult-to-view side-vehicle zones are also monitored by the radar technology of this available feature, which alerts you to possible proximity danger when driving. While traveling in forward gears, an illuminated icon appears in the driver's sideview mirror and an audible warning sounds (if activated) when another vehicle is approaching alongside. BSM is included as part of the available SafetyTec™ Package and includes the class-exclusive<sup>2</sup> Rear Cross-Path Detection.<sup>10</sup>

**TOWN & COUNTRY IS THE ONLY MINIVAN IN ITS CLASS<sup>2</sup> TO OFFER REAR CROSS-PATH DETECTION!**<sup>10</sup> Included as part of the available SafetyTec Package, Rear Cross-Path Detection<sup>10</sup> alerts the driver to most approaching low-speed vehicles when backing out of parking spots.

**SECURITY ALARM.** This system monitors the door-ajar switches as well as the ignition circuit for unauthorized entry. The lights flash and the horn sounds, alerting you if someone else is trying to enter your vehicle.

**POWER LIFTGATE WITH OBSTACLE DETECTION.<sup>6</sup>** Like the sliding doors, the power liftgate detects most obstacles in its path and will automatically stop and reverse.

**POWER ADJUSTABLE PEDALS.** Available adjustable brake and accelerator pedals allow you to customize the position, enabling the driver to maintain a comfortable distance from the steering wheel. The memory function on Limited customizes each fob's position setting.

**DOOR ALERT.** This selectable feature automatically flashes signal lights, indicating which sliding door is open.



**KEYLESS ENTER 'N GO.** The personalized key fob enables passive vehicle entry. With the fob in a pocket or purse, doors automatically unlock as you approach the vehicle. This available system allows quick access without fumbling for the key.

**CHILD PROTECTION REAR DOOR LOCKS.** A small lever on the front edge of the sliding door disables the rear doors' inside release handles.

**EXCLUSIVE<sup>2</sup> STANDARD DUAL POWER SLIDING DOORS.** With the push of a button, in cabin or on key fob, the dual sliding doors effortlessly open. These power doors detect most obstacles in their path to automatically halt their motion and reverse.<sup>6</sup>

**REMOTE KEYLESS ENTRY.** The power sliding doors and power liftgate allow you to slide open rear doors and open the liftgate, all with the touch of just a couple of buttons on the key fob, overhead console, or inside the cabin.

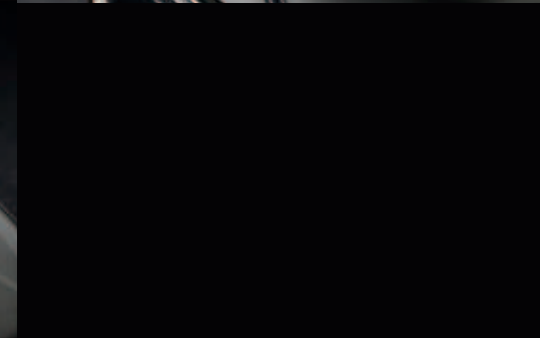
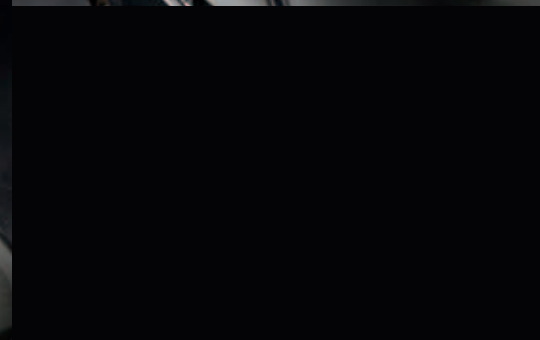
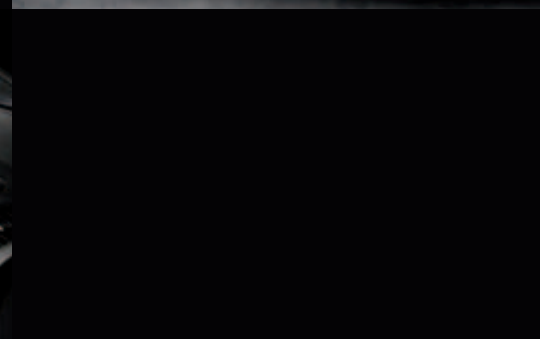
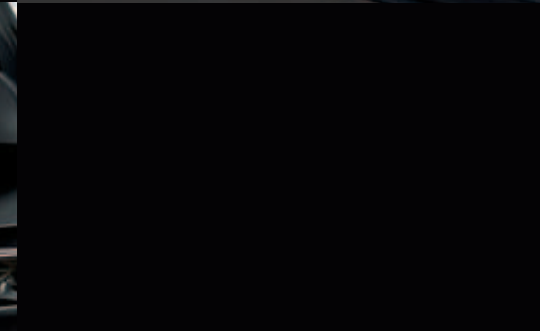
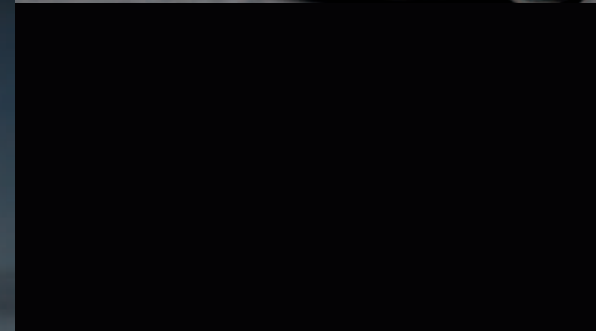
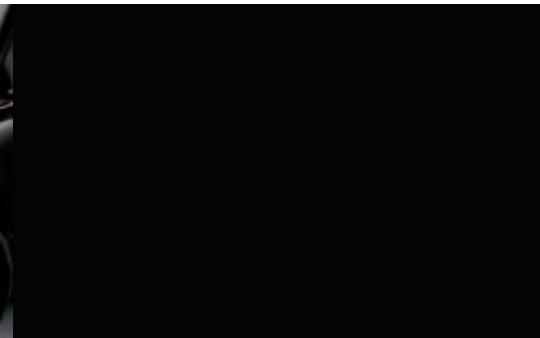


**MAKE IT YOURS.**  
AUTHENTIC CHRYSLER ACCESSORIES BY MOPAR.

WITH YOU EVERY MILE. Mopar is with you from the moment you take possession of your new Chrysler Town & Country and for every mile thereafter. It helps to further your vehicle's distinction with accessories of every kind. They are designed by the same engineers of your vehicle and made specifically for your model. It's get-it-right-the-first-time satisfaction with seamless fit and finish, exact color matches, and high-quality materials that have been thoroughly tested.

Mopar also assures you with expert technicians who know your make and model best from Vehicle Protection Plans and Express Lane Service to Mopar Owner Connect, a secure owners-only site, accessible by registering at [owners.chrysler.com](http://owners.chrysler.com). There, you'll enjoy online access to service records, extensive vehicle information, and much more. Learn more about the world of Mopar and all it has to offer at [mopar.com](http://mopar.com). See your Chrysler dealer for the latest accessories and parts available.

(left to right, top to bottom) Chromed Billet Aluminum Grille Insert - Door Sill Guards - 17-Inch Chrome-Clad Wheel - Katzkin® Leather Interiors - Sunroof Air Deflector - Roof Box Cargo Carrier - Roof Top Cargo Carrier - Roof Top Cargo Basket - Roof-Mount Ski and Snowboard Carrier.









17-INCH ALUMINUM WHEEL Standard on Touring



17-INCH PAINTED ALUMINUM WHEEL Standard on Touring-L



17-INCH POLISHED ALUMINUM WHEEL  
Standard on Limited and available on Touring-L (Late availability)

## WARRANTIES

Chrysler vehicles are covered by a Chrysler Group LLC 3-Year or 36,000-Mile Basic Limited Warranty (excludes normal maintenance and wear items), as well as a 5-Year or 100,000-Mile Powertrain Limited Warranty that is fully transferable and includes Roadside Assistance Services: Flat Tire, Lockout, Towing Out of Gas/Fuel Delivery, and Battery Jump Assistance. Ask your dealer for details and a copy of these limited warranties.

## AUTHENTIC CHRYSLER ACCESSORIES BY MOPAR.

Are designed specifically for your Chrysler vehicle for exceptional fit, finish, and performance. Visit your dealership or [mopar.com](http://mopar.com).

## AUTOMOBILITY

Chrysler Group LLC's Automobility program provides aftermarket reimbursement incentives on adaptive vehicle upfit equipment in order to help provide safe and reliable vehicle modifications to enhance accessibility for all people. For more information, call (800) 255-9877 or visit [chryslerautomobility.com](http://chryslerautomobility.com).

## UCONNECT®

With Uconnect, you're always connected — to people, places, music, movies, and the Internet.




## SiriusXM SATELLITE RADIO

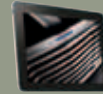
SiriusXM Satellite Radio<sup>3</sup> delivers over 130 channels, including commercial-free music, sports, news, talk, entertainment, traffic, and weather. Factory-installed SiriusXM Satellite Radio includes a one-year subscription. For more information, go to [siriusxm.com](http://siriusxm.com).

## CHRYSLER SERVICE CONTRACTS

Chrysler Group LLC has a vested interest in your satisfaction and owner experience with your new Chrysler vehicle. Chrysler Group LLC Service Contracts offer extended service plans to help ensure that you'll enjoy your vehicle for many years down the road — for just pennies a day. For more information on comprehensive vehicle coverage, see your Chrysler dealer, call (800) 442-2666, or visit [chrysler.com/csc](http://chrysler.com/csc).

## JOIN IN

   Join fellow enthusiasts and tell your story by posting comments, participating in discussions, and sharing your Chrysler vehicle photos and videos. Join our community on Facebook ([facebook.com/Chrysler](http://facebook.com/Chrysler)), follow us on Twitter ([twitter.com/Chrysler](http://twitter.com/Chrysler)), and check us out on YouTube ([youtube.com/TheChryslerChannel](http://youtube.com/TheChryslerChannel)). Thank you for following.



Go Mobile: Take an engaging, multimedia tour of your vehicle on your mobile device. Visit Chrysler Group LLC in iTunes® from your smartphone or iPad® to download the most up-to-date apps on their vehicles. Log on to the Chrysler.com mobile site for a comprehensive, at-a-glance review of what you need to know about your Chrysler vehicle. Experience visual and interactive demonstrations of the entire lineup, gaining access to product information at your fingertips, wherever you go.



Earn 3 points on qualifying purchases made at Chrysler Group LLC dealerships, 2 points per \$1 on qualifying travel purchases, and 1 point per \$1 on qualifying purchases everywhere else with the new Chrysler® MasterCard.<sup>12</sup> Points may be redeemed at your local dealership for cash off your new or used vehicle, accessories, parts, or service — including your next oil change. Or choose from hundreds of other rewards, including travel, cash back to your account, merchandise, or gift cards.<sup>12</sup> For more information or to apply, visit [ChryslerCard.com](http://ChryslerCard.com).



## THE CHRYSLER CONNECTION

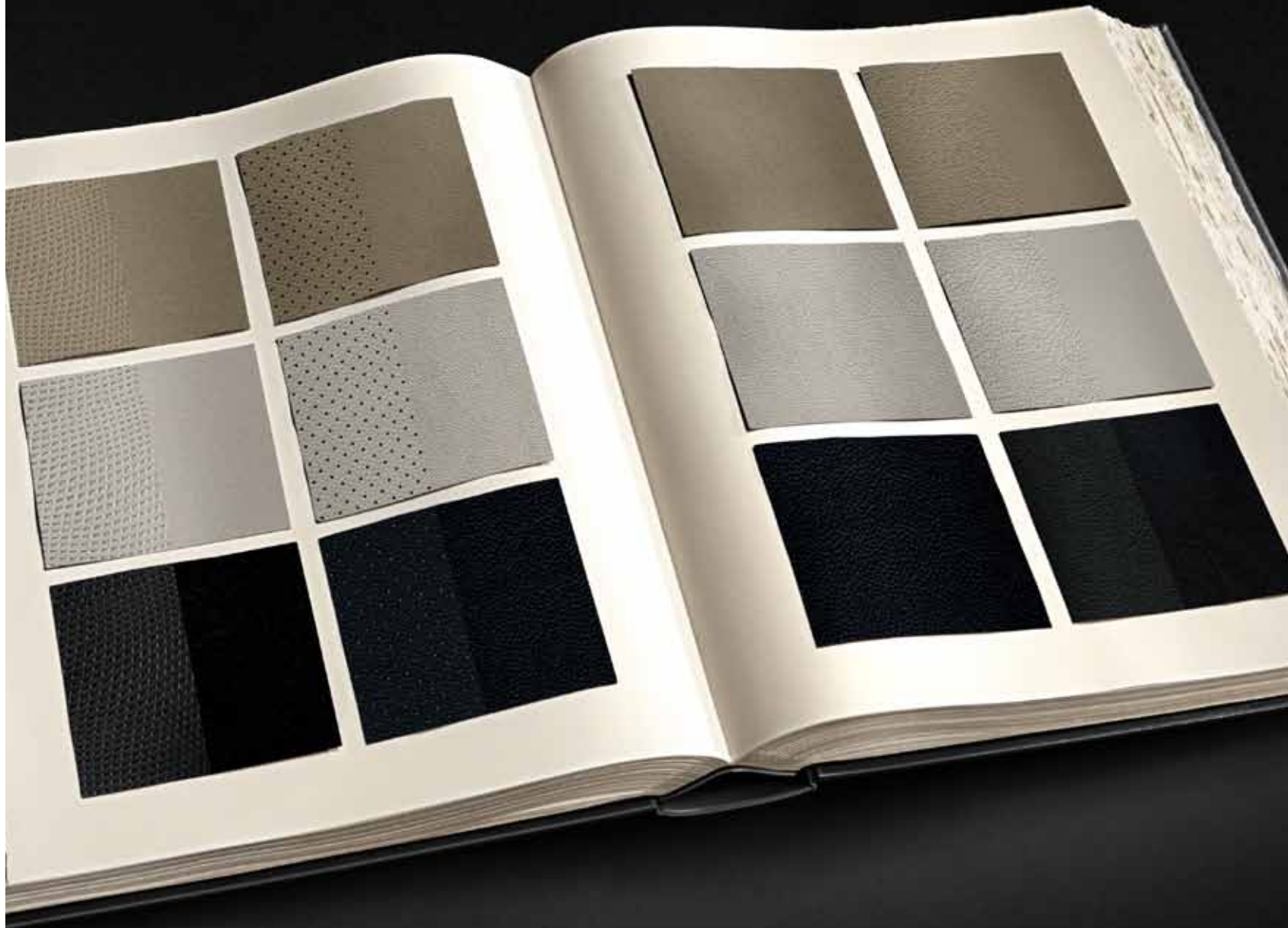
Bring the Chrysler brand style and distinction to your lifestyle in and out of your vehicle with authentic, professional, active, travel and home accessories, apparel, and gift cards for your favorite Chrysler enthusiast. You'll also wear your pride of ownership on your sleeve when you boast one of the popular Imported from Detroit® garments. Shop the complete collection to show you know what earned luxury is all about at [Chrysler.com/collection](http://Chrysler.com/collection).



(1) Based on total minivan sales 1984-2012 (2) Based on the latest available competitive information on vehicles in the Chrysler Group LLC Premium Minivan segment. (3) SiriusXM service requires a subscription, sold separately, after 12-month trial included with vehicle purchase. If you decide to continue your SiriusXM service at the end of the trial subscription, the plan you choose will automatically renew and bill at the current rates until you call SiriusXM at 1-866-635-2349 to cancel. See our Customer Agreement for complete terms at SIRIUS.com. Sirius satellite service is available only to those at least 18 and older in the 48 contiguous United States, D.C., and P.R. (with coverage limitations). SiriusXM Traffic available in select markets. See [siriusxm.com/traffic](http://siriusxm.com/traffic) for more information. Sirius, XM and all related marks and logos are trademarks of Sirius XM Radio Inc. (4) Phone must support Bluetooth Phone Book Access Profile (PBAP). (5) Uconnect Web feature is not intended for use by the driver while the vehicle is in motion. Always drive carefully. Subscription required. (6) Detects most obstacles. As with all electronically controlled systems, care is advised. (7) The advanced front air bags in this vehicle are certified to the new U.S. federal regulations for advanced air bags. Children 12 years old and younger should always ride buckled up in a rear seat. Infants in rear-facing child restraints should never ride in the front seat of a vehicle with a passenger front air bag. All occupants should always wear their lap and shoulder belts properly. (8) Always sit properly with the head restraint properly adjusted. Never place anything in front of the head restraint. (9) Always check visually for vehicles prior to changing lanes. (10) Always check entire surroundings visually before backing up. (11) No system, no matter how sophisticated, can repeal the laws of physics or overcome careless driving actions. Performance is limited by available traction, which snow, ice, and other conditions can affect. When the ESC warning lamp flashes, the driver needs to use less throttle and adapt speed and driving behavior to prevailing road conditions. Always drive carefully, consistent with conditions. Always wear your seat belt. (12) Complete details, including restrictions, limitations, and exclusions, will be available when you become a Cardmember. MasterCard is a registered trademark of MasterCard International Incorporated. This card is issued by First Bankcard, a division of First National Bank of Omaha, pursuant to a license by MasterCard International Incorporated.

This brochure is a publication of Chrysler Group LLC. All product illustrations and specifications are based upon current information at the time of publication approval. Chrysler Group LLC reserves the right to make changes from time to time, without notice or obligation, in prices, specifications, colors, materials and to change or discontinue models, which are considered necessary to the purpose of product improvement or for reasons of design and/or marketing. Chrysler, the Chrysler wing badge, Imported From Detroit, Mopar, ParkSense, ParkView, Pentastar, SENTRY Key, Stow 'n Go, Stow 'n Place, Town & Country and Uconnect are registered trademarks and SafetyTec is a trademark of Chrysler Group LLC. Bluetooth is a registered trademark of Bluetooth SIG. Blu-ray Disc is a registered trademark of Blu-ray Disc Association. Facebook is a registered trademark of Facebook, Inc. Garmin and the Garmin logo are registered trademarks of Garmin, Ltd. or its subsidiaries and are registered in one or more countries, including the U.S. HomeLink is a registered trademark owned by Johnson Controls, Inc. ∞ Infinity is a registered trademark of Harman Industries, Inc. iPad, iPhone, iPod and iTunes are registered trademarks of Apple Inc. Katzkin and the Katzkin logo are registered trademarks of Katzkin leather interiors, Inc. NASCAR is a registered trademark of the National Association for Stock Car Auto Racing, Inc. NFL is a registered trademark of the National Football League. Quiet Steel is a registered trademark of Material Sciences Corporation. SIRIUS, XM and all related marks and logos are trademarks of SIRIUS XM Radio Inc. and its subsidiaries. Thule is a registered trademark of Thule, Inc. The Twitter name, logo, Twitter T, Tweet, and Twitter bird are trademarks of Twitter, Inc. in the United States and other countries. YouTube is a registered trademark of Google Inc. © 2012 Chrysler Group LLC. All Rights Reserved.

INTERIOR COLORS



*LEGACY CLOTH WITH HUDSON CLOTH*  
Medium Frost  
Light Graystone  
Black  
Optional on Town & Country Touring

*TORINO LEATHER TRIM WITH AXIS PERFORATIONS*  
Medium Frost  
Light Graystone  
Black  
Town & Country Touring - L

*TORINO LEATHER TRIM*  
Medium Frost  
Light Graystone  
Black  
Town & Country Touring

*NAPPA LEATHER WITH SUEDE MICROFIBER ACCENTS*  
Medium Frost  
Light Graystone  
Black  
Town & Country Limited

EXTERIOR COLORS



(Left to right, top to bottom) CRYSTAL BLUE PEARL - BRILLIANT BLACK CRYSTAL PEARL - MAXIMUM STEEL METALLIC - STONE WHITE - CASHMERE PEARL - DEEP CHERRY RED CRYSTAL PEARL - BILLET SILVER METALLIC - TRUE BLUE PEARL



BRILLIANT BLACK CRYSTAL PEARL

BILLET SILVER METALLIC

STONE WHITE

TRUE BLUE PEARL

CRYSTAL BLUE PEARL

CASHMERE PEARL

DEEP CHERRY RED CRYSTAL PEARL

MAXIMUM STEEL METALLIC



