



2008

JEEP PATRIOT





Shown left to right: Jeep Compass Limited in Bright Silver Metallic, Patriot Limited in Light Khaki Metallic, all new 2008 Liberty Limited in Red Rock Crystal Pearl, Grand Cherokee Overland in Light Graystone Pearl, Commander Overland in Black, Wrangler Rubicon in Flame Red and Wrangler Unlimited Rubicon in Rescue Green Metallic

FUN. GETTING THERE IS ONLY HALF OF IT.

Climb into a dirt-throwing, snow-gripping, hill-defying, road-embracing, story-collecting Jeep® vehicle and thrills are all but guaranteed. For over 65 years, we've been taking fun-lovers to some of the world's most adventurous destinations. Every Jeep vehicle is purpose-built to put a world of excitement within easy grasp, giving you permission to confidently go where others may fear to tread. Today, discover what's new with our expanded lineup that includes Jeep Wrangler Unlimited, Patriot, Grand Cherokee, Commander, Compass, Wrangler and the all new 2008 Jeep Liberty. Jeep 4x4s have made the exhilarating trek to the top of the mountain and now you're invited to join the party. The rest of the ride, with you at the wheel, promises to be just as fun. **Have fun out there. Jeep**



2008 JEEP PATRIOT

- ◇ Capability 4
 - › Freedom-Drive I™ 4WD.... 4
 - › Freedom-Drive II™ 4WD ... 4
- ◇ Sound and Vision..... 6
 - › SIRIUS Satellite Radio .. 6
 - › Flip-Down Liftgate Speakers 6
- ◇ Power 9
 - › 2.0L Engine 9
 - › 2.4L VVT Engine..... 9
- ◇ Safety and Security 10
 - › Electronic Stability Program (ESP)..... 10
 - › Standard Front and Supplemental Side-Curtain Air Bags ... 10
- ◇ Patriot Limited 14
 - › Leather-Trimmed, Heated Front Seats 15
 - › UConnect® Hands-Free Communication System 15
- ◇ Patriot Sport 20
 - › YES Essentials® Premium Seat Fabric 21
 - › Fold-Flat Front Seat 21
- ◇ Color and Trim 23
- ◇ Specifications 25
- ◇ Authentic Jeep Accessories by Mopar 27
- ◇ The Jeep® Brand Lifestyle. 29

◀ JEEP PATRIOT LIMITED WITH FREEDOM-DRIVE II™ OFF-ROAD GROUP SHOWN IN BRILLIANT BLACK CRYSTAL PEARL



FROM PAVED ROADS TO BEATEN PATHS

The 2008 Jeep® Patriot puts practical, purposeful capability within incredibly easy reach. A hearty 4x2 system with Electronic Stability Program (ESP) including traction control is standard, or choose the available Freedom-Drive I™ active full-time four-wheel drive (4WD) with LOCK mode when you want to tackle more severe conditions such as deeper snow and sand. For BEST-IN-CLASS off-road capability,⁽¹⁾ choose the available full-time Freedom-Drive II™ Off-Road Group that includes an Off-Road 4WD LOCK mode, Hill Descent Control with Grade Sensing, skid plates, tow hooks, increased ground clearance, heavy-duty cooling and alternator, driver seat height adjuster and optimized engine/transmission calibrations for improved response during off-roading.



Hill Descent Control with Grade Sensing helps control speed while heading down steep grades. The available Continuously Variable Automatic Transaxle (CVT2L) can handle up to 19-inch water fording, rock crawling and descending steep grades. When the T-shaped handle labeled “4WD LOCK” is engaged and the transmission is in low or reverse, the maximum amount of torque is sent to the rear axle for improved low-speed traction. An available Tire Pressure Monitoring Display sends data from transmitters in each valve stem to a monitoring display.



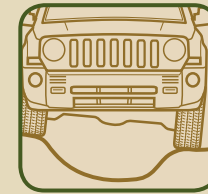
⁽¹⁾When properly equipped with Freedom-Drive II™ Off-Road Group. Based on overall static scoring of available features vs 2007 *Automotive News* Entry-Level CUV segment.



JEEP PATRIOT LIMITED WITH FREEDOM-DRIVE II™ OFF-ROAD GROUP SHOWN IN SUNBURST ORANGE PEARL

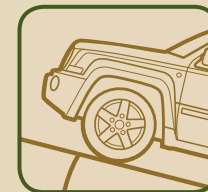


JEEP TRAIL RATED® vehicles are designed to perform in a variety of off-road conditions identified by five performance categories:



ARTICULATION

The ability to keep tires in contact with the road, providing traction to climb over large obstacles.



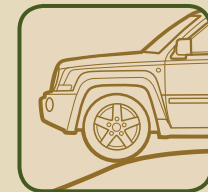
TRACTION

The ability to transfer power to the road or trail along with the ability of the suspension to keep the wheels in contact with the terrain.



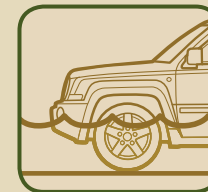
MANEUVERABILITY

The ability to navigate around obstacles that are tightly situated.



GROUND CLEARANCE

The ability to drive over large obstacles or logs in combination with approach/departure/breakover angles.



WATER FORDING

The ability to cross a specific depth of water at a specific speed.

Do not attempt water fording unless depth is known to be less than 19 inches. Traversing water can cause damage that may not be covered by the new vehicle warranty. Always off-road responsibly in approved areas.



SOUND AND VISION

FUNCTIONALLY FUN

Jeep® Patriot's clever features and sound systems were designed to let you live in your very own roving sanctuary. Take your toys with you and go somewhere new to play. Patriot makes sure you enjoy the journey. The available Premium Sound Group comes fully loaded with a one-year subscription for factory-installed SIRIUS Satellite Radio, featuring over 130 channels of 100 percent commercial-free music, sports, news, talk, entertainment, traffic and weather. For more information, go to sirius.com. SIRIUS Satellite Radio is standard on Limited models. Nine speakers, a booming subwoofer, two flip-down liftgate speakers and an attractive leather-wrapped steering wheel with audio controls complete this sound package. A perfectly sound option for augmenting tailgating events or your next camping trip.



The center console features a sliding armrest that has a rubber-lined flip pocket — made for cradling an MP3 player or cell phone. The standard AM/FM/CD radio provides an input jack for your MP3 player. When the rear liftgate is open, the flip-down speakers can entertain at your next tailgating party or camping trip.



ADDITIONAL ADD-ONS. Keep your eyes on the road ahead with Patriot's "at-your-fingertip" sound system controls. They come along for the ride when you go for the optional Premium Sound Group and its leather-wrapped steering wheel and audio controls. Patriot's cargo light is complemented with an available removable and rechargeable LED flashlight. Choose your view with the available vent, tilt and slide power sunroof.



JEEP PATRIOT LIMITED WITH FREEDOM-DRIVE II™ OFF-ROAD GROUP SHOWN IN JEEP GREEN METALLIC



JEEP PATRIOT LIMITED WITH FREEDOM-DRIVE II™ OFF-ROAD GROUP SHOWN IN BRIGHT SILVER METALLIC



POWERFULLY FUEL-EFFICIENT

When it comes to ruling the road, the 2008 Jeep® Patriot is driving away with distinction. In fact, pair the standard 5-speed manual transmission with a brawny yet efficient 2.4L engine and Patriot zooms off to achieve an exceptional 28-mpg fuel efficiency.⁽¹⁾ Dual overhead cams, four valves per cylinder, and Variable Valve Timing (VVT) on both the intake and exhaust camshafts help the 2.4L engine achieve 172 hp @ 6,000 rpm supported by 165 lb-ft of torque. The available Continuously Variable Automatic Transaxle (CVT2) with AutoStick® features a +/- gate for manual shifting between six discrete ratios. Or, on its own, CVT2 breezes through an infinitely variable number of gear ratios that transmit a constant stream of quiet power for both optimum fuel economy⁽¹⁾ and high-revving highway-passing muscle when needed.



THE 2008 JEEP® PATRIOT INCLUDES A LIFETIME POWERTRAIN LIMITED WARRANTY. No deductible. See dealer for a copy of limited warranty and details. Non-Transferable. Not available on certain fleet vehicles.

Patriot's optional 2.0L four-cylinder engine cranks out a healthy 158 hp and 141 lb-ft of torque — pretty impressive for an engine this size. (Available on Sport 4x2 only.)

By electronically controlling the valves of the 2.4L engine, the timing is continuously adjusted to provide either maximum power or optimal fuel efficiency⁽¹⁾ — depending upon the demands of that instant.

⁽¹⁾Based on EPA est. 23 city/28 hwy mpg; 4x2 models equipped with 5-speed manual transmission.





A STRONG DEFENSE

The 2008 Jeep® Patriot shows extreme allegiance to your safety and security with its advanced systems, including standard Electronic Stability Program[™] (ESP) with Electronic Roll Mitigation (ERM) that helps the driver in maintaining the intended course. Patriot's standard and advanced antilock brake (ABS) and traction control systems feature Brake Assist, and the available 4WD features special calibrations to help compensate for rough and slippery surfaces. A Tire Pressure Monitoring Warning Lamp is standard. The Tire Pressure Monitoring Display, available on Sport and standard on Limited, offers instant notification of high or low pressure on individual tires via an instrument panel readout. Plus, every Patriot comes with a Sentry Key[®] Theft Deterrent System that assures its loyalty stays true to you.



Standard advanced multistage front air bags[™] help provide nearly instantaneous occupant protection by adjusting air bag output to crash severity. Protect your front passenger occupant even further by opting for the available front seat-mounted side air bags.[™] And, standard supplemental side-curtain air bags[™] offer side protection for all of the outboard occupants.

SAFETY AND SECURITY ◇ On-/Off-Road Antilock Brake System (ABS) ◇ Electronic Stability Program (ESP) with Electronic Roll Mitigation (ERM), Traction Control and Brake Assist ◇ Driver BeltAlert ◇ Energy-Absorbing Steering Column ◇ Front Seat Belts with Seat Pretensioners and Load Limiters

[™]No system, no matter how sophisticated, can repeal the laws of physics or overcome careless driving actions. Performance is limited by available traction, which snow, ice and other conditions can affect. When the ESP warning lamp in the speedometer flashes, the driver needs to use less throttle and adapt speed and driving behavior to prevailing road conditions. Always drive carefully, consistent with conditions. Please always wear your seat belt.

[™]Always sit properly in the seat with the seat belt fastened. Children 12 and under should always be in a backseat correctly using an infant or child restraint system, or the seat belt positioned correctly for the child's age and weight. Air bags shown deployed for illustrative purposes only. Always drive carefully, consistent with conditions. Please always wear your seat belt.



JEEP PATRIOT SPORT WITH FREEDOM-DRIVE II™ OFF-ROAD GROUP SHOWN IN INFERNO RED CRYSTAL PEARL



Properly secure all cargo.



JEEP PATRIOT LIMITED WITH FREEDOM-DRIVE II™ OFF-ROAD GROUP SHOWN IN BRIGHT SILVER METALLIC



LIMITED

SUBSTANCE MEETS STYLE

With its standard fog lamps, 17-inch cast-aluminum wheels, available sunroof and stylish touch of silver on its roof rack, bodyside moldings and front and rear bumpers, Jeep® Patriot Limited attracts attention without even trying. Limited also delivers an impressive dose of Jeep brand power with its standard 2.4L inline 4-cylinder VVT engine with 172 hp, Electronic Stability Program (ESP) with Electronic Roll Mitigation (ERM), antilock brake system (ABS) and rack-and-pinion power steering. Go for the strong and standard 5-speed manual transmission or upgrade to the innovative Continuously Variable Automatic Transaxle (CVT2) with AutoStick.[®] Opt for authentic Trail Rated[®] 4WD capability with the available Freedom-Drive II™ Off-Road Group and your Limited will bear a genuine Jeep Trail Rated[®] badge of honor.



Shed more light on any terrain. Jeep® Patriot Limited outfitted with Driving Lights, an Authentic Jeep Accessory by Mopar. See page 27 for additional items that are purpose-built for your Patriot.





LIMITED

PRIMED FOR COMFORT

Jeep® Patriot Limited lets you take on the world sitting in style, starting with a leather-trimmed interior that features heated front seats and a leather-wrapped steering wheel with audio controls. Patriot Limited is naturally tech-savvy and can power up cell phones and laptops with a standard 115-volt (150-watt capacity) center console outlet or a 12-volt DC auxiliary outlet. The audio choices are tasty, too, and include a standard factory-installed SIRIUS Satellite Radio with a one-year subscription; an available navigation system; available UConnect® Hands-Free Communication System (much more convenient than holding a cell phone to your ear); and an enviable available 458-watt, 9-speaker Premium Sound Group with flip-down liftgate speakers.



LIMITED ◇ **STANDARD** ◇ 2.4L VVT Engine ◇ Leather-Trimmed Interior with Heated Front Seats ◇ Speed Control ◇ Power Windows, Door Locks and Mirrors ◇ 17-inch Cast-Aluminum Wheels ◇ Sentry Key® Theft Deterrent System ◇ HomeLink® Universal Transmitter ◇ Tire Pressure Monitoring Display ◇ SIRIUS Satellite Radio ◇ Rearview Auto-Dimming Mirror ◇ Electronic Vehicle Information Center (EVIC) ◇ **AVAILABLE** ◇ Freedom-Drive II™ 4x4 Off-Road Group ◇ Freedom-Drive I™ 4x4 System with LOCK Mode ◇ Continuously Variable Automatic Transaxle (CVT2) with AutoStick® ◇ Power Sunroof ◇ Navigation Radio ◇ 9-Speaker Premium Sound Group with Flip-Down Liftgate Speakers



JEEP PATRIOT LIMITED LEATHER-TRIMMED INTERIOR SHOWN IN DARK SLATE GRAY



JEEP PATRIOT LIMITED LEATHER-TRIMMED INTERIOR SHOWN IN DARK PEBBLE BEIGE WITH PASTEL PEBBLE BEIGE INSERTS



LIMITED

REARRANGE YOUR WORLD

The 2008 Jeep® Patriot's configurable interior lets you arrange things just to your liking. That's especially welcome when you want to come to the rescue of friends and family who might need a helping hand moving groceries, gear or must-have flea market finds. Of course, there's plenty of room for people too. Patriot Limited's standard leather-trimmed interior makes nice for up to five adults plus gear. Those sitting in front will benefit from front heated seats for quick warmth on cold days and/or soothing comfort for sore muscles and backs. And then there's Limited's standard fold-flat front-passenger seat which forms a table-like surface for added cargo space.

The standard 60/40 fold-flat rear seats offer a super-comfy available recline feature for up to 12 degrees of enhanced rear seat relaxation. And the durable diamond plate texture UltraFloor™ vinyl cargo load floor with a 250-lb load capacity is removable and washable for easy cleanup. We just have this word of advice: Be sure to properly secure all cargo.



"The interior is spacious, both for passengers and cargo.

The seats are some of the best we've experienced...

Designed to comfortably, yet firmly hold you in place."

— *TheCarConnection.com* (Paul A. Eisenstein, 2007)



JEEP PATRIOT SPORT WITH FREEDOM-DRIVE II™ OFF-ROAD GROUP SHOWN IN JEEP GREEN METALLIC



SPORT

HIGH STANDARDS

Jeep® Patriot Sport is built to make friends with every economy-minded adventurer. Besides its original, rugged design, Sport comes right out of the box with standard stuff like: a four-wheel antilock brake system (ABS), four-wheel independent suspension, power rack-and-pinion steering, Electronic Stability Program (ESP) with Electronic Roll Mitigation (ERM) and a Sentry Key® Theft Deterrent System. Enhance Sport's friendly good looks by opting for 17-inch cast-aluminum wheels with all-terrain tires.



An electronic rear defroster and manual liftgate with a wiper are practical, functional and standard on Patriot. The Canoe Carrier, Sport Utility Bars, Molded Splash Guards and Hitch Receiver are available Authentic Jeep Accessories by Mopar. See page 27 for more information on these items. At Right: Patriot's available 4WD lockable Electromagnetic Center Coupling (ECC) helps provide true 4WD capability.





SPORT

BASIC APPEAL



Heated front seats with YES Essentials[®] stain resistant, odor resistant, premium antistatic seat fabric[®] are an available feature on Patriot Sport.

Jeep[®] Patriot Sport's standard interior offers seating for five in retro-chic Vinyl Tech fabric that's breathable, water-resistant and very easy to clean. The entry-level AM/FM/CD radio lets you hook up your MP3 player to jam with your favorite tunes ASAP. Manual roll-up windows on the Sport model lets you crank in fresh air — no "auto-down" buttons here. A sliding console armrest is adjustable with a flip pocket MP3/cell phone/PDA holder. The available fold-flat front-passenger seat creates more cargo space or a handy tabletop. Properly secure all cargo.

SPORT ◇ **STANDARD** ◇ 2.4L VVT Engine ◇ Front-Wheel-Drive (4x2) System ◇ 5-Speed Manual Transaxle ◇ Tire Pressure Monitoring Warning Lamp ◇ Antilock Brake System (ABS) ◇ Electronic Stability Program (ESP) with Electronic Roll Mitigation (ERM), Traction Control and Brake Assist ◇ Air Conditioning ◇ Outside Temperature Gauge ◇ **AVAILABLE** ◇ 2.0L Engine ◇ Continuously Variable Automatic Transaxle (CVT2) with AutoStick[®] ◇ Freedom-Drive II[™] 4x4 Off-Road Group ◇ Freedom-Drive I[™] 4x4 System with LOCK Mode ◇ Power Sunroof ◇ Premium Sound Group ◇ Speed Control

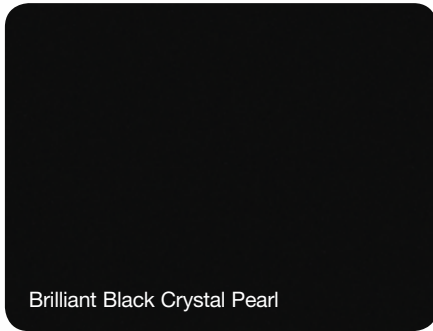
[®]Not compatible with aftermarket fabric-protecting coatings.



JEEP. PATRIOT SPORT YES ESSENTIALS® PREMIUM CLOTH INTERIOR SHOWN IN DARK SLATE GRAY



COLOR AND TRIM



Brilliant Black Crystal Pearl



Light Khaki Metallic



Jeep® Green Metallic[®]



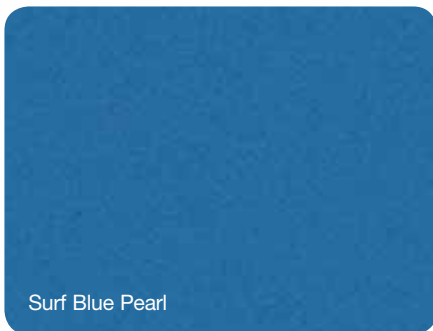
Inferno Red Crystal Pearl[®]



Stone White



Sunburst Orange Pearl[®]



Surf Blue Pearl



Bright Silver Metallic



Steel Blue Metallic

NOTE: Due to occasional printing irregularities, the colors shown may vary slightly from actual hues.
[®]Extra cost.

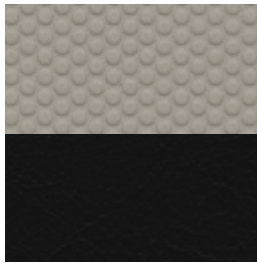
SPORT



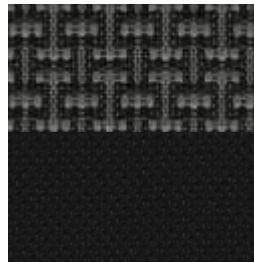
**Olympia/Caprice Vinyl Tech
Pastel Pebble Beige/
Dark Pebble Beige**
◇ Standard Sport D



**Hero/Racine Cloth with
YES Essentials®
Light Pebble Beige**
◇ Standard Sport E



**Olympia/Caprice Vinyl Tech
Pastel Slate Gray/
Dark Slate Gray**
◇ Standard Sport D



**Hero/Racine Cloth with
YES Essentials®
Dark Slate Gray**
◇ Standard Sport E

LIMITED



**McKinley Leather Trim
Dark Slate Gray**
◇ Standard



**McKinley Leather Trim
Pastel Pebble Beige/
Dark Pebble Beige**
◇ Standard

WHEELS



16-inch Styled Steel ◇ Standard Sport



**17-inch Cast-Aluminum
painted Argent** ◇ Standard
Limited ◇ Available Sport

®Not compatible with aftermarket fabric-protecting coatings.

POWERTRAIN

Engine (Standard)	2.4L DOHC 16V dual VVT I-4
Displacement (cu in/cc)	144/2,360
Horsepower (SAE net @ rpm)	172 @ 6,000
Torque (SAE net @ rpm)	165 @ 4,400
Engine (Available on Sport, 4x2 models only)	2.0L DOHC 16V dual VVT I-4
Displacement (cu in/cc)	122/1,998
Horsepower (SAE net @ rpm)	158 @ 6,400
Torque (SAE net @ rpm)	141 @ 5,000
Fuel System	Sequential multipoint, electronic fuel injection with electronic throttle control
Fuel Recommendation	Unleaded regular, 87 octane (R+M)/2
Engine Construction/Fuel Delivery	High-pressure die-cast aluminum block with dry iron liners, cast-aluminum cylinder head, forged crankshaft, dual counter-rotating balance shafts
Intake Design	Tuned intake manifold with Electronic Active Charge Motion Control valves, 4 valves per cylinder, electronically controlled, dual Variable Valve Timing
Exhaust System	Oversized displacement muffler for reduced back pressure and noise, long-life design
Transmission	5-speed manual with overdrive, ratio range (:1) 3.77 – 0.72 (1st – 5th) overall top gear ratio: 3.34
	Continuously Variable (CVT2) automatic with 30-mm high-strength multilayer steel drive belt, ratio range (:1), 2.35 – 0.39; overall top gear ratio: 2.41
	Continuously Variable (CVT2L) automatic with 30-mm high-strength multilayer steel drive belt, ratio range (:1), 2.35 – 0.39; overall top gear ratio: 3.21, unique final drive with 19:1 crawl ratio
Drive Systems	Front-wheel drive (4x2) transaxle with constant velocity joints and equal-length half shafts
	Freedom-Drive I™ active, full-time 4-wheel drive (4x4) with selectable 4WD LOCK
	Freedom-Drive II™ active, full-time 4x4 with selectable 4WD LOCK with Off-Road mode and 19:1 overall crawl ratio

ELECTRICAL SYSTEM

Alternator (Std./Avail.)	120A/140A [®]
Battery	525 CCA, maintenance-free

BODY/SUSPENSION/CHASSIS

Body Design	Unitized steel construction with a structural safety cage utilizing advanced hot-stamped, tailor-rolled, dual-phase steel technologies and advanced joint design for added strength, reduced weight and improved NVH
Suspension	Front: Independent with MacPherson strut, and coil springs over gas-charged shocks Rear: Independent multilink with coil springs and gas-charged shocks
Steering	Power-assisted, rack-and-pinion
Overall Ratio	16.4:1
Turning Diameter (curb-to-curb) (ft)	35.6
Turns (lock-to-lock)	2.9

[®]Available and included with 2.0L engine.

[®]Available and included only with optional Freedom-Drive II™ Off-Road Group.

Jeep, Trail Rated, Compass, Patriot, Grand Cherokee, Commander, Wrangler, Liberty, Sentry Key, Navus, DVD Rear Seat Video, Freedom-Drive I, Freedom-Drive II, UConnect, Mopar, ParkSense, Camp Jeep and the Jeep grille are trademarks of Chrysler LLC. Chrysler Financial is a business unit of Chrysler Financial Services. "SIRIUS" and the SIRIUS dog logo are registered trademarks of SIRIUS Satellite Radio Inc. All other trademarks, service marks and logos are the property of their respective owners. All rights reserved. For full terms and conditions visit sirius.com. Prices and programming are subject to change. Not available in AK and HI. HomeLink is a registered trademark owned by Johnson Controls, Inc. YES Essentials is a registered trademark of Milliken & Company. UltraFloor is a trademark of Lear Corporation. iPod® and the iPod design are registered trademarks of Apple Inc. Bluetooth is a registered trademark of Bluetooth SIG Inc.

Brake System

ABS, 4-wheel disc hydraulic, power-assisted, 11.5" vented front/10.3" solid rear (rear drums on 4x2 Sport model) Std.

Electronic Stability Program (ESP)

4-channel, 4-wheel antilock with active wheel speed, vehicle-speed, steering-wheel angle, yaw-rate, and lateral-acceleration sensors, vehicle stability management with two-stage activation switch, all-speed traction control, Brake Assist, Electronic Roll Mitigation and Electronic Brake Distribution (4WD brake traction control and off-road ABS features also included with Freedom-Drive II™ Off-Road Group) Std.

Parking Brake Type

Drum-in-hat

CAPACITIES/WEIGHTS/TOWING (pounds unless otherwise specified)

Fuel Tank (gal) (4x2/4x4)	13.6/13.5
Base Model Curb Weight	
5-speed manual (4x2/4x4)	3,108/3,250
CVT2 (4x2/4x4)	3,186/3,328
Payload Capacity (includes occupants and cargo)	925
Maximum Gross Vehicle Weight Rating	4,575
Maximum Loaded Trailer Weight (when properly equipped)	2,000
Tongue Load Limit (when properly equipped)	225

NOTE: For specific towing details, discuss your plans with your Jeep, dealer who will help you select the right equipment to meet your specifications.

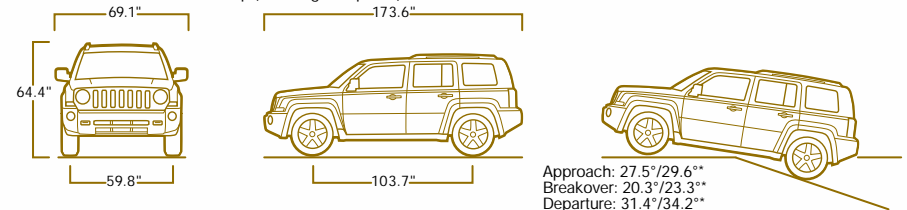
INTERIOR DIMENSIONS (inches unless otherwise specified)

Seating Capacity	5 Adults
Head Room front/front with sunroof/rear	41.0/39.6/39.9
Leg Room front/rear	40.6/39.4
Shoulder Room front/rear	54.6/54.0
Hip Room front/rear	52.3/51.0
Cargo Volume rear seat up/folded/rear seatback folded and available front-passenger seatback folded (cu ft)	23.0/54.2/62.7
Cargo Lifter Height	30.7

EXTERIOR DIMENSIONS (inches unless otherwise specified)

Wheelbase	103.7
Overall Length	173.6
Overhang front/rear	34.8/35.1
Overall Width (without mirrors)	69.1
Track front/rear	59.8/59.8
Overall Height (with roof rails)	65.7
Running Ground Clearance (at curb weight)	8.0/9.0 [®]

[®]With Freedom-Drive II™ Off-Road Group (including skid plates).



NOTE: Patriot Sport specifications shown above.

*When equipped with Freedom-Drive II™ Off-Road Group. Standard measurements are with P215/60R17 tires.

All product illustrations, specifications and competitive comparisons are based upon current information at the time of publication approval. Although descriptions are believed correct, complete accuracy cannot be guaranteed. Chrysler LLC reserves the right to make changes at any time, without notice or obligation, in prices, specifications, equipment, colors and materials, and to change or discontinue models. Some of the equipment shown or described throughout this catalog is available at extra cost. Available in U.S. markets only. See your dealer for the latest information.

	PATRIOT SPORT		PATRIOT LIMITED
	D	E	F
CAPABILITY			
Brakes — Ventilated front disc, rear drum (4x2 only)	•	•	
— 4-wheel antilock disc (included in Sport 4x4 models)	P	P	•
Engine and Axle/Transaxle — 2.4L DOHC 16V dual VVT 4-cylinder with 5-speed manual	25D	25E	25F
— 2.4L DOHC 16-valve dual VVT 4-cylinder with Continuously Variable Transaxle (CVT2) with AutoStick*	26D	26E	26F
— 2.4L DOHC 16-valve dual VVT 4-cylinder with Continuously Variable Transaxle and 19:1 overall crawl ratio (CVT2L) (included in Freedom-Drive II™ Off-Road Group)	28D	28E	28F
— 2.0L 16-valve dual VVT 4-cylinder with Continuously Variable Transaxle with AutoStick (4x2 only) (n/a with Trailer Tow Prep Group or OWL all-terrain tires)	24D	24E	
Freedom-Drive I™ — Active full-time 4x4 with selectable LOCK feature	O	O	O
Freedom-Drive II™ — Active full-time 4x4 with selectable LOCK feature, Off-Road mode with Hill Descent Control and Grade Sensing (requires CVT2L automatic transaxle in Freedom-Drive II™ Off-Road Group)	O	O	O
Front-Wheel Drive — Front-wheel drive (4x2) transaxle with constant velocity joints and equal-length half shafts	•	•	•
Speed Control — Steering wheel-mounted		•	•
Steering — Power rack-and-pinion	•	•	•
EXTERIOR			
Accents — Body-color grille	•	•	•
— Silver front, rear bumper inserts and bodyside moldings			•
Fog Lamps — 2 halogen, located in front bumper (included in Freedom-Drive II™ Off-Road Group)	P	P	•
Mirrors — Manual, foldaway	•		
— Power, foldaway		•	•
Tires — P205/70R16, Goodyear Eagle black sidewall, all-season touring	•	•	
— P215/60R17, Firestone Affinity black sidewall, all-season touring			•
— P215/65R17, Goodyear Wrangler SR-A outline white letter, all-terrain (included in Tire and Wheel Group) (n/a 2.0L engine)	P	P	P
— Spare, full-size (compact spare — standard) (included in Freedom-Drive II™ Off-Road Group and Trailer Tow Prep Group)	P	P	P
Windows — Manual	•		
— Power with driver's one-touch down		•	•
INTERIOR			
Air Conditioning [†] — Manual temperature control	•	•	•
Assist Handles — 4, headliner mounted above doors (included in Freedom-Drive II™ Off-Road Group)	P	•	•
Cargo Area — UltraFloor™ panel, removable and washable	•	•	•
Deep-Tinted Glass — On rear door, cargo area and liftgate windows	•	•	•
Outside Temperature Gauge	•	•	•
Power Sunroof — With express open/close, sunshade and tilt features		O	O
Seat Coverings — Vinyl Tech, two-tone	•		
— Cloth, with YES Essentials® stain resistant, odor resistant, antistatic premium seat fabric, color-keyed		•	
— Leather-trimmed, color-keyed			•
Seats — Driver-seat height adjuster (included in Freedom-Drive II™ Off-Road Group)	P	•	•
— Front, low-back reclining front buckets with 60/40 flat-folding rear seatback	•		

*There are special cooling requirements for non-factory-installed air conditioning. Failure to follow these requirements may invalidate warranty.

†Certified to the Federal Regulations that allow less forceful front air bags. Always use seat belts. Children 12 and under should always be in a backseat correctly using an infant or child restraint system, or with the seat belt positioned correctly for the child's age and weight.

	PATRIOT SPORT		PATRIOT LIMITED
	D	E	F
Seats (cont.)			
— Front low-back reclining with front-passenger forward fold-flat seatback, rear reclining 60/40 split-folding rear seatback		•	•
— Heated front seats (premium cloth on Sport, leather-trimmed on Limited)		O	•
115-Volt Outlet — To power household items, laptops (150-watt capacity)		•	•
SAFETY AND SECURITY			
Air Bags [†] — Advanced multistage front	•	•	•
— Supplemental side-curtain, deploy during a severe-force side impact	•	•	•
— Supplemental front-seat-mounted side	O	O	O
Electronic Stability Program (ESP) — Includes Electronic Roll Mitigation (ERM), Brake Assist and Traction Control	•	•	•
Remote Keyless/Illuminated Entry		•	•
Sentry Key® Antitheft Engine Immobilizer — Theft deterrent system with 2 encoded keys	•	•	•
Tire Pressure Monitoring Display — Instrument panel warning indicates which tire is excessively low or high in pressure (included in Security and Convenience Group)		P	•
Tire Pressure Monitoring Warning Lamp	•	•	
SOUND SYSTEMS/ENTERTAINMENT			
Radios — AM/FM/CD player with changer controls, and audio input jack for MP3 player and format capabilities	•	•	•
— AM/FM/6-disc CD changer with MP3-format capability		O	O
— AM/FM/Navigation/6-disc CD changer with full map GPS display and MP3-format capability			O
— SIRIUS Satellite Radio factory-installed, includes one-year subscription from SIRIUS, 130 channels of music, entertainment, information (included in Premium Sound Group)		P	•
Speakers — 4 speakers	•	•	•
UConnect® — Hands-free communications for Bluetooth® compatible mobile phones: features: voice dialing, audio address book, call transfer, multiphone recognition, emergency calls (911) and towing assistance (included in Security and Convenience Group)			P
PACKAGES			
Freedom-Drive II™ Off-Road Group — Air filtration system, tow hooks, fuel tank and transmission/oil pan skid plates, fog lamps, a full-size spare, CVT2L with Off-Road mode and Hill Descent Control with Grade Sensing, 140-amp alternator, brake traction control, driver-seat height adjuster, engine oil cooler, and upgraded sealing package for water fording up to 19" (must have Tire and Wheel Group)	O	O	O
Premium Sound Group — With 458 watts of power, 9 speakers with subwoofer and two flip-down liftgate speakers, SIRIUS Satellite Radio, leather-wrapped steering wheel with audio controls		O	O
Security and Convenience Group — Soft tonneau cover, adjustable crossbars, security alarm, rearview auto-dimming mirror, universal transceiver, vehicle information center, Tire Pressure Monitoring Display (UConnect Hands-Free Communication and daytime running lamps available on Limited only)		O	O
Smoker's Group — Removable ashtray and cigar lighter	O	O	O
Tire and Wheel Group — P215/65R17 OWL all-terrain tire and 17" aluminum wheels (required with Freedom-Drive II™ Off-Road Group) (n/a 2.0L engine) (17" aluminum wheels standard on Limited)	P	O/P	P
Trailer Tow Prep Group — Engine oil cooler, trailer tow wiring harness and full-size spare tire (n/a 2.0L engine) (engine oil cooler also included in Freedom-Drive II™ Off-Road Group)		O	O

• = Included. P = Available within package noted. O = Optional.



AUTHENTIC JEEP® ACCESSORIES

When you enhance your Patriot with Authentic Jeep® Accessories by Mopar, you gain far more than substantial style, premium protection or extreme entertainment. You also benefit from the authentic difference found only in an original equipment accessory. It's a difference that demands tighter tolerances and envelope-pushing testing methods. And one backed up by a superior warranty* serviced by Jeep dealerships nationwide. Choose the full line of accessories that feature a fit, finish and functionality designed specifically for your Patriot. Explore the possibilities at mopar.com.

[A] Roof Box Cargo Carrier. Keep your cargo dry and secure. Tough, locking thermoplastic carrier features quarter-turn installation and gas-cylinder opening system. Aerodynamic design limits wind resistance and provides sleek styling. Carrier is available in two sizes.

Side Window Air Deflectors. Now you can partially open your side windows while remaining dry in even the nastiest weather. Air deflectors are constructed of tinted acrylic and come in a set of four. **Front Air Deflector.** Command a bold appearance right up front with this tinted Air Deflector, designed to help deflect road spray, dirt and bugs up and away from your hood and windshield. Air Deflector features the Jeep logo.

[B] Driving Lights. Shed more light on any terrain. Light covers are also available in either a mesh grille or a lens cover featuring the Jeep logo (sold separately).

[C] Hitch Receiver.¹ Built for the long haul, this heavy-duty Class I hitch receiver can tow up to 2,000 lb.² Ball Mount, Hitch Ball, Wiring Kit and Hitch Plug also available.

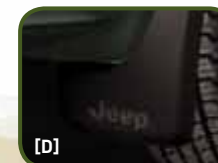
[D] Molded Splash Guards. Help protect the lower bodyside panels of your Patriot from damage caused by gravel, salt and road debris, while adding some straight-on good looks.

[E] Door Sill Guards. Start your day on a bright note while protecting your vehicle's interior sills from scratches. Front Door Guards prominently feature the Patriot name.

¹See your dealer for full details and a copy of the limited warranty.

²Check owner's manual for hitch types, load capacity and heavy duty equipment required. Do not exceed rated tow capacity of vehicle as equipped.

³When equipped with Trailer Tow Prep Group or Freedom-Drive II™ Off-Road Group.



YOU'LL LIKE WHAT YOU SEE.

Jeep Patriot shown with Authentic Jeep Accessories by Mopar, including Roof Top Cargo Basket, Roof Top Cargo Net,[®] Front Air Deflector, Driving Lights and Side Window Air Deflectors.



[F] DVD Rear Seat Video.[™] No lines and no waiting with this integrated, single-disc CD/DVD featuring a 7-inch wide screen, wireless headphones and remote.

[G] Interface Module for iPod.[®] This FM-bounded system allows you to play your iPod music files through your vehicle's audio system and maintain your music selection through your iPod control button.

[H] Navus[™] Dash-Mounted Navigation System. Features include touch-screen controls, complete map and point-of-interest data for the United States and parts of Canada, turn-by-turn direction prompts, trip information, voice instructions (in three languages), automatic rerouting and much more.

[I] Remote Start.[®] Hit the ground running with the ability to start your vehicle from up to 800 feet away. A two-way remote start system is also available.

[J] Hitch-Mount Fold-Down Bike Carrier. Available in a Two-Bike (fits 1¼-inch receiver) style that folds down to allow your vehicle's liftgate to open without having to remove bikes from the carrier.

[K] Roof-Mount Bike Carriers. Both Fork-Mount and Upright style bike carriers mount to the **Sport Utility Bars** and feature clamps with extra-large rubber inserts to help protect bike surfaces.

[L] Six-Pair Ski and Snowboard Carrier. Designed to hold up to six pairs of skis

or four snowboards, or a combination of the two. Features corrosion-resistant lock covers.

[M] Bright Pedal Kit. The machined metal adds plenty of brightwork to your footwell, while rubber inserts on pedal provide contrast and positive traction.

[N] Slush Mats. Heavy-vinyl mats feature deep grooves to help prevent water, snow and mud from damaging your Patriot's carpet.

[®]Check state and local regulations on the use of remote starters.
[®]Properly secure all cargo.



Journey deeper into the Jeep® brand lifestyle at Camp Jeep®, the ultimate adventure held exclusively for Jeep owners and their guests. We invite you to join us for three unforgettable days of activities, entertainment and camaraderie. Some of the action-packed thrills include 4x4 Trail Rides, Off-Road Courses, Adventure Sports, Guided Hikes and Kids Activities. Immerse yourself in

Jeep brand history and talk with Jeep vehicle engineers.



jeep.com/campjeep



Jeep® Jamboree USA has a long tradition of giving Jeep owners the opportunity to enjoy their Go Anywhere, Do Anything™ freedom. Jeep Jamborees are off-road adventure weekends that bring together the outdoors, down-to-earth people and their Jeep 4x4s. We invite you to explore America's remote back-country, where friendships bond quicker and memories are deeper, where pine needles

smell fresher and blue skies last longer.



jeep.com/jamboree



Jeep® Gear includes an extensive line of gifts and gear for the Jeep enthusiast.

This handpicked collection of authentic wearables, sports equipment, luggage and electronics is just right for those looking to show their pride in the Jeep brand. All items are just as rugged and durable as your Jeep vehicle.



jeep.com/gear

FRIENDLY DEALERSHIPS offer knowledgeable staff who are professionally trained to guide you with expert advice.

VISIT jeep.com for all the latest information you'll need to be properly equipped for an educated buying decision.

CALL (800) 925-JEEP to speak with one of our Jeep® brand customer service representatives for the right answers to your important questions.

CHRYSLER SERVICE CONTRACTS Your Jeep vehicle is one of the most capable vehicles on the road. Why not protect your investment with a Chrysler Service Contract or Maintenance Plan? For more information, see your Jeep dealer, call 1-800-442-2666 or visit servicecontracts.chrysler.com.

CHRYSLER FINANCIAL With Chrysler Financial, you can get great finance options, competitive rates and flexible payment plans. Learn more about your financing benefits and even submit a credit application at chryslerfinancial.com.

TRAIL RATED® Every new properly equipped Jeep Patriot 4x4 proudly wears an authentic Trail Rated badge as a visual reminder of the capabilities built in — the symbol of a genuine, tried-and-true Jeep 4x4. Accept no substitutes.

AUTHENTIC JEEP ACCESSORIES BY MOPAR are designed specifically for your Jeep vehicle for exceptional fit, finish and performance. Visit your dealership or mopar.com.

SIRIUS SIRIUS Satellite Radio delivers over 130 channels, including 100% commercial-free music, sports, news, talk, entertainment, traffic and weather. Factory installed SIRIUS Satellite Radio includes a one year subscription. For more information go to sirius.com.

WARRANTY Jeep vehicles are covered by a 3-year or 36,000-mile Basic Limited Warranty. Ask your dealer for additional details and a copy of this limited warranty. Excludes normal maintenance and wear items.

LIFETIME POWERTRAIN LIMITED WARRANTY No deductible. See dealer for a copy of limited warranty and details. Non-Transferable. Not available on SRT, diesel vehicles, and certain fleet vehicles.

JEEP REWARDS VISA® With the Jeep Rewards Visa credit card, you earn points for every purchase you make which can be redeemed for anything at your Chrysler, Jeep or Dodge dealership — all with no annual fee! Visit jeepcreditcard.com for more information on how to apply.

TREAD LIGHTLY!® As a founding member and official partner, we urge all Jeep owners to follow Tread Lightly! Guidelines. Visit treadlightly.org or call (800) 966-9900 to learn more.

JEEP AUTO INSURANCE The only insurance guaranteed to repair your vehicle using Authentic Jeep Collision Repair Parts by Mopar for as long as you own your Jeep vehicle, and up to \$100 off your deductible when those repairs are done at a Jeep dealership — all at rates that are tough to beat. For a free quote, visit www.jeepautoinsurance.com or call (800) 836-1586 and mention keycode U18XXX.



A wide-angle landscape photograph of a mountain range. The foreground shows a dark, forested slope. The middle ground features several mountain ridges with patches of snow. The background consists of more distant, snow-capped peaks under a clear, light blue sky.

Have fun out there. Jeep®

JEEP IS A REGISTERED TRADEMARK OF CHRYSLER LLC.
