

# 1981 DODGE MIRADA





Mirada's optional leather and vinyl bucket seat interior.



**ABOUT THIS CATALOG.** We have tried to make this catalog as complete as possible. And we hope you find it useful. However, since the time of printing, some of the information you'll find here may have been updated. Also, some of the equipment shown or described throughout this catalog is available at extra cost. Your dealer has details and you should ask him for current information before ordering.



Mirada in Nightwatch Blue with CMX Package including standard cabriolet-style vinyl roof.



**Mirada.** Just once in your life you should know the satisfaction of owning and driving a truly remarkable American car. A car that has been especially designed for the American driver and the American road. A car built to high standards of quality. Designed with the aid of computers. Constructed of corrosion-resistant materials. Checked and rechecked through every stage of assembly. □ Miradas are randomly selected before shipment to dealers and tested for fit, function and appearance. So the high degree of craftsmanship in every detail should come as no surprise. □ In fact, The New Chrysler Corporation is so sure of Mirada's quality engineering and construction, it offers a 30-Day/1,000-Mile (whichever comes first) Satisfaction Money-Back Guarantee that's available at many dealers. See page 7 of this catalog for full details. □ Now, slip behind the wheel. Lean back in the form-fitting bucket seats. Scan the many easy-to-read gauges and easy-to-reach controls before you. And prepare yourself for the unique driving experience that is Dodge Mirada.





**1981 Dodge Mirada.** Its every line conveys the feeling of action and response. Even when it stands at rest. With its standard equipment at the ready. Equipment that includes one of the finest six-cylinder engines ever built . . . Chrysler's legendary Slant Six. An engine that has been improved upon and constantly refined over the last two decades to offer a surprising combination of power, economy and dependability. With new hydraulic valve lifters offered for the first time this year. □ When in motion, Mirada's response is immediate. Its ride smooth and controlled. Its road manners impeccable. For beneath its shining sculptured skin lie the heart and soul of unmistakably fine engineering *and* a commitment to quality materials and assembly that are the ultimate reasons for Mirada's masterful performance and overall automotive excellence.



1981 Dodge Mirada in Burnished Silver Metallic.



Even in its most affordable form, Mirada is a unique collection of sensations. The sensation of perfect proportion and line. Both inside and out. The sensation of standard cloth-and-vinyl bucket seating that wraps you in comfort. The sensation of quality materials, workmanship and design everywhere you look.

Take Mirada's instrument panel, for instance. Behind the standard three-spoke "sport" steering wheel and convenient multifunction control switch, you'll find other standard fare such as a rich-looking brushed aluminum applique, informative gauges, a handy trip odometer, locking glove box and AM radio.

If your driving ambitions lean more towards the sporting, you might want to consider several selections from Mirada's long list of options. Like a 5.2-liter (318) V-8 engine. The Sport Handling or Roadability Packages which include special chassis features designed to make Mirada's road manners even more refined. A leather-wrapped steering wheel rim. Sun roof. Wire wheel covers or forged aluminum road wheels. All meant to be additions to what is—in its most basic form—a well-engineered, well-built and well-equipped automobile. One offering quality and dependability . . . as well as driving excitement unmatched by any previous mid-size Dodge.



Mirada's standard cloth-and-vinyl bucket seat interior.



1981 Dodge Mirada in Graphic Red.



## MIRADA OPTIONS

1. Mirada's handsome control center. With a speedometer, plus engine temperature, alternator and fuel gauges that are easy to read. Headlamp, turn signal, heater and radio controls that are easy to reach. Shown with standard three-spoke "sport" steering wheel, optional air conditioning, AM/FM stereo radio and electronic digital clock.

2. Visor-mounted illuminated vanity mirrors are available for Mirada's driver or front seat passenger or both. A great way to make sure you look your best at all times . . . especially when you're about to make your grand entrance in your new Mirada.

3. These handsome aluminum road wheels may be forged, but they're still the genuine article . . . and they'll add that elegant, yet sporty road car look.

4. Rock and roll, easy listening, country-western, classical, news and interviews . . . want your AM/FM stereo radio to find your favorite station or kind of music? Mirada's optional Search-Tune model will. Push a button and it will scan the airwaves, lock onto a signal, give you time to decide whether or not it's to your liking and then move on to the next station... and the next...and the...

5. A touch of the international is provided by Mirada's standard multifunction column-mounted control lever. A flick of the finger takes care of turn signals, windshield wipers and the optional automatic speed control.

6. Lift either outside door handle to activate Mirada's illuminated entry system. What goes on? All of Mirada's inside courtesy lights, as well as a "halo" light surrounding each door key cylinder. All lights turn off automatically in 30 seconds or when the ignition is switched to "ON."

7. 5/50 Protection Plan. This optional service contract, the longest protection plan\* of any domestic manufacturer, covers major power train components for five years or 50,000 miles (whichever occurs first) from the time you take delivery of your new Mirada. Coverage begins after limited warranty expires. The plan, which has a \$50 deductible per repair visit, also has an allowance for alternate transportation and towing. Ask your dealer for full details. \*Provisions of plans may vary with manufacturer.

**30-DAY SATISFACTION MONEY-BACK GUARANTEE** If you are not completely satisfied with your new Mirada bring it back in good condition with no metal damage. Once your dealer receives clear title we'll refund your money less finance and insurance charges and less the difference, if any, between the trade-in refund value (as shown on the "Trade-In Refund Agreement") and the trade-in value allowed on the retail sales contract. One refund per customer. See your dealer for details.







## EXTERIOR TRIM

Mirada exterior and chassis features include:  
Bright hood rear edge, fender edge, windshield, drip rail, belt, rear quarter window, opera window, and backlight moldings • Bright quarter window vertical louver edges • Bright up-and-over color-keyed roof accent molding • Front fender louvers (non-functional) • Body-side accent stripes

## INTERIOR TRIM



Standard cloth-and-vinyl bucket seats with optional center cushion and folding center armrest. Offered in Dark Blue, Heather, Cashmere, Red.

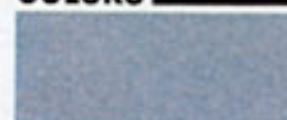


Optional all-vinyl bucket seats with center cushion and folding center armrest. Offered in Dark Blue, Heather, Cashmere and White, with Blue, Cashmere or Red interior accents.



Optional real leather-and-vinyl bucket seats with center cushion and folding center armrest. Offered in Dark Blue, Heather, Cashmere, Red, and White with Dark Blue, Cashmere, Red interior accents.

## COLORS



Burnished Silver Metallic\*



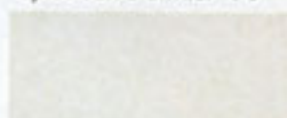
Nightwatch Blue\*



Baron Red\*



Spice Tan Stormist\* (E)



Pearl White\*



Light Heather Gray



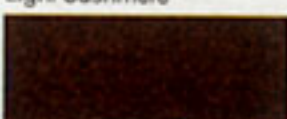
Daystar Blue Metallic\*



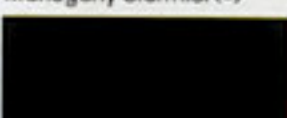
Graphic Red\*



Light Cashmere\*



Mahogany Stormist (E)



Black\*

(E) — Extra Cost  
\*Available CMX Package.

NOTE: Due to occasional printing irregularities, the colors shown may vary slightly from actual hues. See your Dodge dealer for accurate color chips.

All product illustrations and specifications are based on authorized information. Although descriptions are believed correct at publication approval, accuracy cannot be guaranteed. Some of the equipment shown on product illustrations is optional, at extra cost. Chrysler Corporation reserves the right to make changes from time to time without notice or obligation in prices, specifications, colors and materials and to change or discontinue models. See your dealer for the latest information.

## OPTIONS

- Air Conditioning\* — Manual
- Air Conditioning\* — Automatic temperature control
- \*Ask your dealer for details regarding restrictions applicable to the later installation of air conditioning.
- Automatic Speed Control
- Axle — Sure-Grip differential
- Battery — 500 amp Long-Life Maintenance-Free
- Bumper Guards — Rear
- Bumper Rub Strip — Rear
- Center Cushion — With folding armrest (standard with all seats except base cloth-and-vinyl bucket seats)
- Clock — Electronic digital console
- Cornering Lights
- Defroster — Electrically heated rear window, includes 65-ampere alternator (required on all vehicles registered in New York State)
- Emissions Control System and Testing — Required on all vehicles registered in California
- Engine Cooling Package
- Floor Mats — Front
- Floor Mats — Rear
- Gas Cap — Locking
- Glass — Clear: windshield only (no-charge)
- Headlamps — Halogen
- Horn — Triad (three-note)
- Illuminated Entry System
- Landau Roof — Vinyl (eight colors)
- Litter Container

## MIRRORS

- Illuminated Visor Vanity — Left front

## OPTIONAL PACKAGES

- Basic Group (NA on CMX Package)**
  - Light Package • Air conditioning (manual)
  - Undercoating • Vinyl landau roof • Deluxe windshield wipers with intermittent wipe
- Light Package** (Included in Basic Group)
  - Trunk light • Glove box light
  - Ash receiver light • Ignition switch light with time delay
  - Three-function chimes including "headlamps-on" warning • Washer fluid light
  - Map lamp • Door-ajar warning light • Illuminated hood and brake release nomenclature
  - Fuel, temperature and alternator warning lights
  - Under-hood light
- Sport Handling Package**
  - Firm-Feel suspension
  - Heavy-duty front and rear antisway bars, shocks, front

- Illuminated Visor Vanity — Right front

## MOLDINGS

- Body-Side — With protective vinyl insert: color-keyed
- Door Edge Protectors
- Pedal Dress-Up
- Sill
- Wheel Opening

## POWER

- Antenna — Not available with AM/FM stereo with CB
- Bucket Seat — Left
- Deck-Lid Release — With trunk lamp: control in glove box
- Door Locks
- Windows

## RADIOS

- AM/FM Monaural
- AM/FM Stereo\*
- AM/FM Stereo and Cassette Player with Dolby\*†
- AM/FM Stereo with CB Transceiver with Fixed Tri-Band Antenna\*
- AM/FM Stereo with Eight-Track Stereo Tape Player\*
- AM/FM Stereo with Electronic Search-Tune\*
- Premium Speaker Package
- Radio Upgrade — Dual front speakers
- Rear Seat Speaker — Single: available with AM or AM/FM monaural radios only

\*Includes four speakers, two front and two rear.  
†Dolby is a trademark of Dolby Laboratories, Inc.

- Reading Lamp — Header mounted

- Shock Absorbers — Heavy-duty, included with Sport Handling Package which also includes heavy-duty rear springs and heavy-duty shock absorbers
- Spare Tire — Conventional

## STEERING WHEELS

- Luxury Two-Spoke — Leather-wrapped rim
- Luxury Two-Spoke — Woodtone in rim; horn switches on spokes
- Steering Column — Tilt

- Stripes, Tape — Hood and deck (match standard body-side stripes)
- Sun Roof — Tinted glass, power operated
- T-Bar Roof

## TIRES

- P205/75R15 — Glass-belted radial white sidewall
- P205/75R15 — Steel-belted radial wider whitewall
- P215/70R15 — Steel-belted radial wider whitewall
- P215/70R15 — Steel-belted radial with raised white letters

- Trunk Dress-Up — Includes trunk carpeting and spare tire cover
- Undercoating

## WHEELS AND WHEEL TRIM

- Road Wheels — Forged aluminum ten-spoke (four)
- Wheel Covers — Premier (standard with CMX Package)
- Windshield Wipers — Deluxe, electric two-speed, intermittent wipe (required with tilt steering column option)

- keyed rear bumper guards
- CMX front fender nameplates
- Color-keyed door handle accents • CMX offered in these exterior paint colors only: Baron Red, Nightwatch Blue, Pearl White, Graphic Red, Black, Light Cashmere, Silver, Spice Tan Stormist (E), Daystar Blue Metallic (E) — extra cost.

- Premium Speaker System** All stereo sound systems on Mirada can be ordered with the optional Premium Speaker System. This system — featuring two front and two coaxial rear speakers — reproduces stereo programs and tapes with dramatic realism. A special 30-watt (15 watts per channel) rear amplifier with two piezo electric two-way coaxial rear speakers gives the stereo an exciting new dimension.

## STANDARD SPECIFICATIONS

ENGINE:	3.7-liter (225 CID) one-barrel Slant Six
TRANSMISSION:	Automatic, three-speed
SUSPENSION:	Front — Transverse torsion bars with antisway bar Rear — Leaf springs
AXLE RATIO:	2.7:1 (2.9:1 with optional air conditioning)
TIRES:	P195/75R15 glass-belted radial white sidewall
BRAKES:	Power Front — Disc Power Rear — Drum
ELECTRICAL:	Battery — 430-amp Maintenance-Free, standard Alternator — 60-amp

## MIRADA

STANDARD EQUIPMENT	MIRADA
Ashtrays — Rear, dual door-mounted	S
Brakes — Front power disc	S
Braking System — Dual, with separate brake fluid reservoirs in master cylinder	S
Bumper Systems — Energy absorbing	S
Carpets — Front and rear, shelf panel, lower doors	S
Cigarette Lighter	S
Circuit Breakers — With automatic reset: for headlamps and wipers	S
Coat Hooks	S
Electronic Ignition System	S
Engine Coolant Reserve System	S
Facia Front End — Soft	S
Flasher System — Hazard warning	S
Glass — Tinted: all windows	S
Hood Release — Inside	S
Horns — Dual	S
Instrument Panel and Sun Visors — Padded	S
Lights — Backup, quarter lamps, instrument panel	S
Lights and Reflectors — Side marker	S
Lock — Glove box	S
Lock — Ignition and steering column	S
Louvers — Fender (non-functional)	S
Mirror — Inside, day/night	S
Mirrors — Dual: aerodynamic, remote control	S
Molding — Color-keyed, up-and-over roof band	S
Moldings — Belt and drip rail, hood rear, quarter windows, windshield, backlight	S
Radio — AM	S
Rub Strips — Front	S
Seat Belt Reminder System	S
Seat Belts — Combination lap-shoulder belts for driver and right-front passenger	S
Seat Belts — Deluxe, color-keyed	S
Steering — Power	S
Steering Wheel — Sport three-spoke, color-keyed	S
Stripes — Body-side	S
Suspension — Torsion bar with front sway bar	S
Tires — Glass-belted radial whitewall	S
Transmission — TorqueFlite	S
Trip Odometer	S
Turn Signals — With lane-change feature: on multifunction lever	S
Ventilation — Bi-level	S
Wheel Covers — Premier	S
Wheels — Safety-Rim	S
Windshield Washers and Wipers — Electric: on multifunction lever	S
S — Standard	

**CORROSION PROTECTION**  
Chrysler Corporation's corrosion protection is among the best in the industry. It includes the use of galvanized sheet metal panels, one of the best known methods of corrosion protection, as well as the seven-step dip-and-spray process. Both keep your Mirada looking new for years to come.

MOPAR parts are engineered by Chrysler Corporation for use in your new Dodge. When replacement is necessary, be sure to specify MOPAR parts. Used by professional mechanics all over the world.

Buy or lease a Dodge Mirada.



A PRODUCT OF THE NEW CHRYSLER CORPORATION

## ENGINES

TYPE	DISPLACEMENT	BORE & STROKE	COMPRESSION RATIO	CARBURETION	HORSEPOWER SAE NET @ RPM	TORQUE @ RPM
Federal						
<input type="checkbox"/> 6-cyl OHV	3.7-liter (225 cu in.)	3.40" x 4.12"	8.4:1	1-bbl	85 @ 3,600	165 @ 1,600
<input type="checkbox"/> V-8 OHV	5.2-liter (318 cu in.)	3.91" x 3.31"	8.5:1	2-bbl	130 @ 4,000	230 @ 2,000
California						
<input type="checkbox"/> 6-cyl OHV	3.7-liter (225 cu in.)	3.40" x 4.12"	8.4:1	1-bbl	90 @ 3,600	165 @ 1,200
<input type="checkbox"/> V-8 OHV	5.2-liter (318 cu in.)	3.91" x 3.31"	8.5:1	4-bbl	165 @ 4,000	240 @ 2,000

Note: 1981 EPA estimates were unavailable at the time this catalog was printed. Ask your dealer about current information regarding mpg ratings.