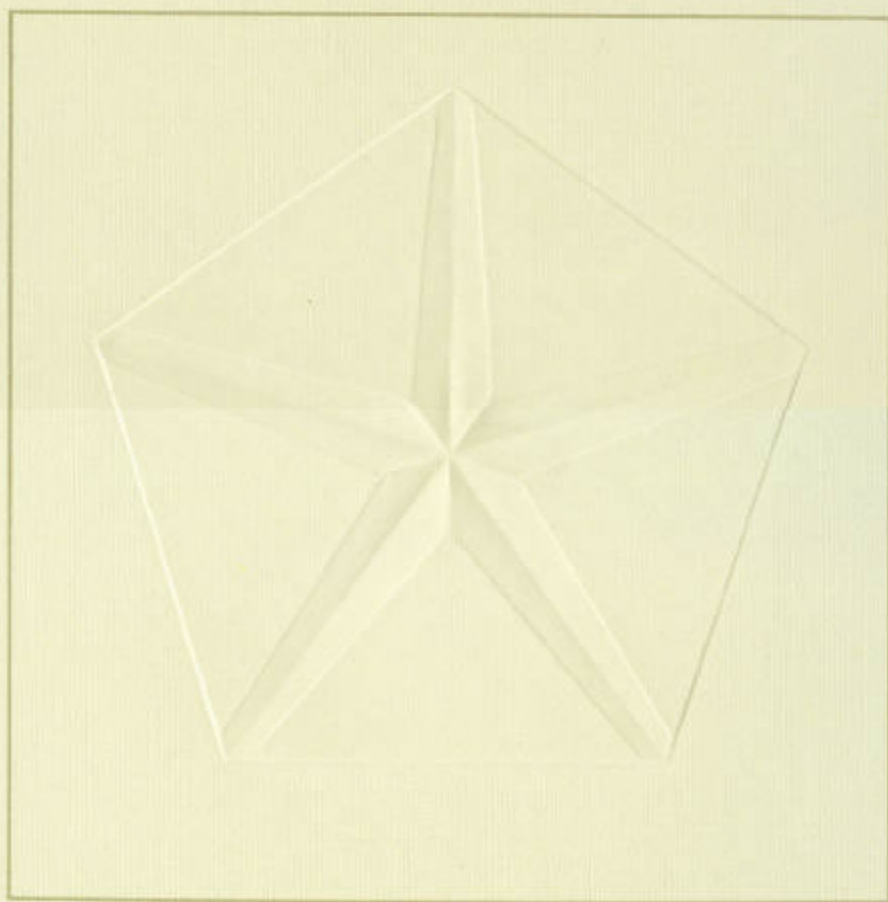


CHRYSLER '80

FIFTH AVENUE EDITION
NEW YORKER
NEWPORT









Fifth Avenue. There is no other street like it in the world. And no other car. The most exclusive Chrysler you can own. Unique in appearance. Appointment. And driving convenience.

APPEARANCE

Two-tone designer's cream-on beige or black walnut metallic monotone paint treatment. Distinctive padded landau roof with specially lighted quarter windows. Concealed headlamps. Classic wire wheel covers and front fender louvers.

APPOINTMENT

Champagne leather and vinyl interior. Plush cut-pile carpeting. Leather-wrapped tilt steering wheel. Driftwood instrument panel and door trim applique. Fold-down center armrests, door assist handles, reading lamps.

DRIVING CONVENIENCE

V-8 engine. TorqueFlite automatic transmission. Power-assisted steering and front disc/rear drum brakes. Air conditioning. AM/FM stereo radio. Power windows. Deluxe windshield wipers with intermittent wipe feature. Push-button reset trip odometer. And on and on.

Fifth Avenue Edition. The ultimate Chrysler.

Some of the equipment shown or described throughout this catalog is available at extra cost.



FIFTH AVENUE. THE ONE AND ONLY.





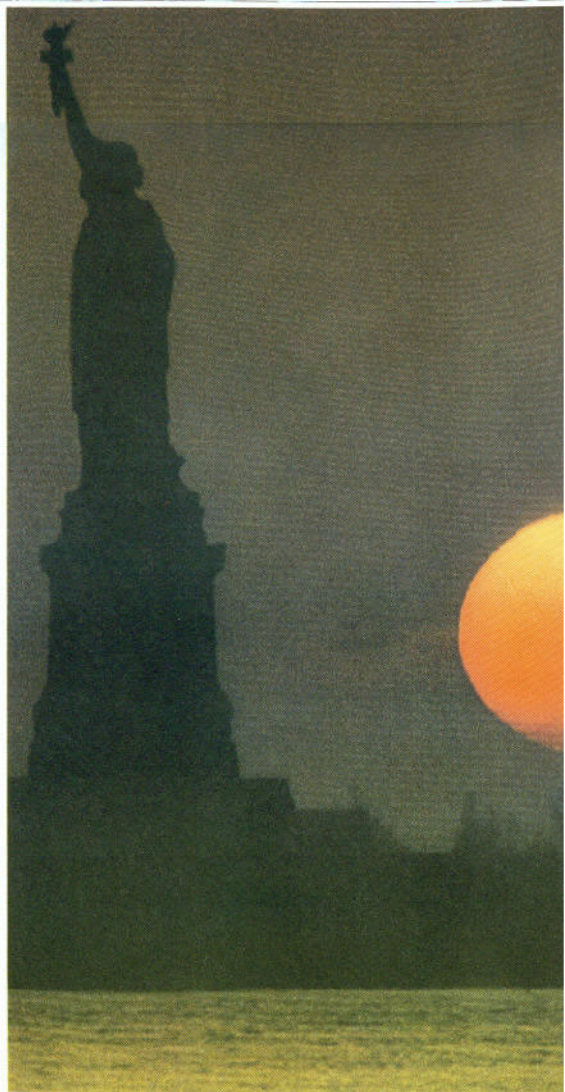
It stands out above the rest. The fabulous New Yorker. The epitome of sophisticated styling and advanced engineering. A car that embodies the spirit of the city and the lofty aspirations of one who would own it.

NEW YORKER STYLE

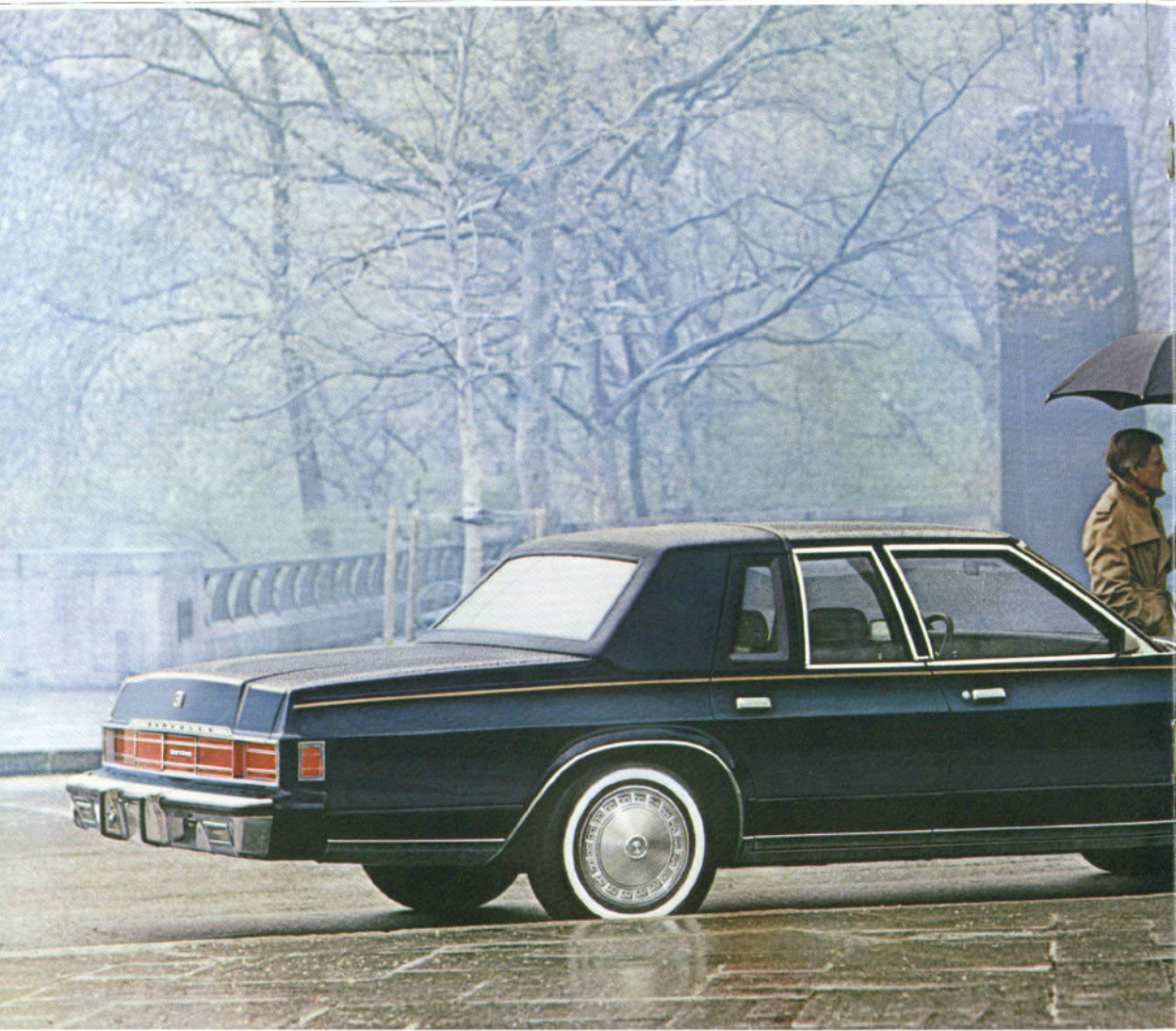
Every facet of its brilliant design speaks eloquently for itself. The long, graceful sweep of its classic profile. The understated beauty of its bright chrome grille topped by the striking pentastar hood ornament. Concealed headlamps. Bancroft-grain padded landau vinyl roof with a formal rear quarter window that allows backseat passengers a view and privacy, too. And the crisply sculpted rear deck with its full-width taillamp effect.

ABOUT THIS CATALOG

We have tried to make this catalog as complete as possible. And we hope you will find it useful. However, since the time of printing, some of the information you'll find here may have been updated. Your dealer has details and you should ask him for current information before ordering.



THE INCOMPARABLE NEW YORKER.





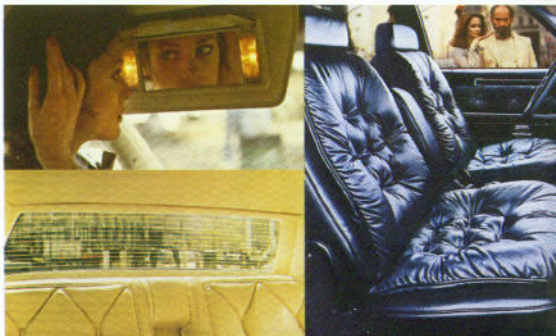
NEW YORKER GRACIOUSNESS

The New Yorker is considerate of your every need. And whim. Hence the responsive 318 V-8 TorqueLite automatic transmission. Power front disc brakes and steering. Smooth riding front torsion bar and rear leaf-spring suspension. Power windows. AM/FM stereo radio. Air conditioning. Digital clock. Soothing warning chimes instead of buzzers. And a more than ample choice of convenience options such as driver- and passenger-side vanity mirrors with dual level lighting and an electrically heated rear window (shown).

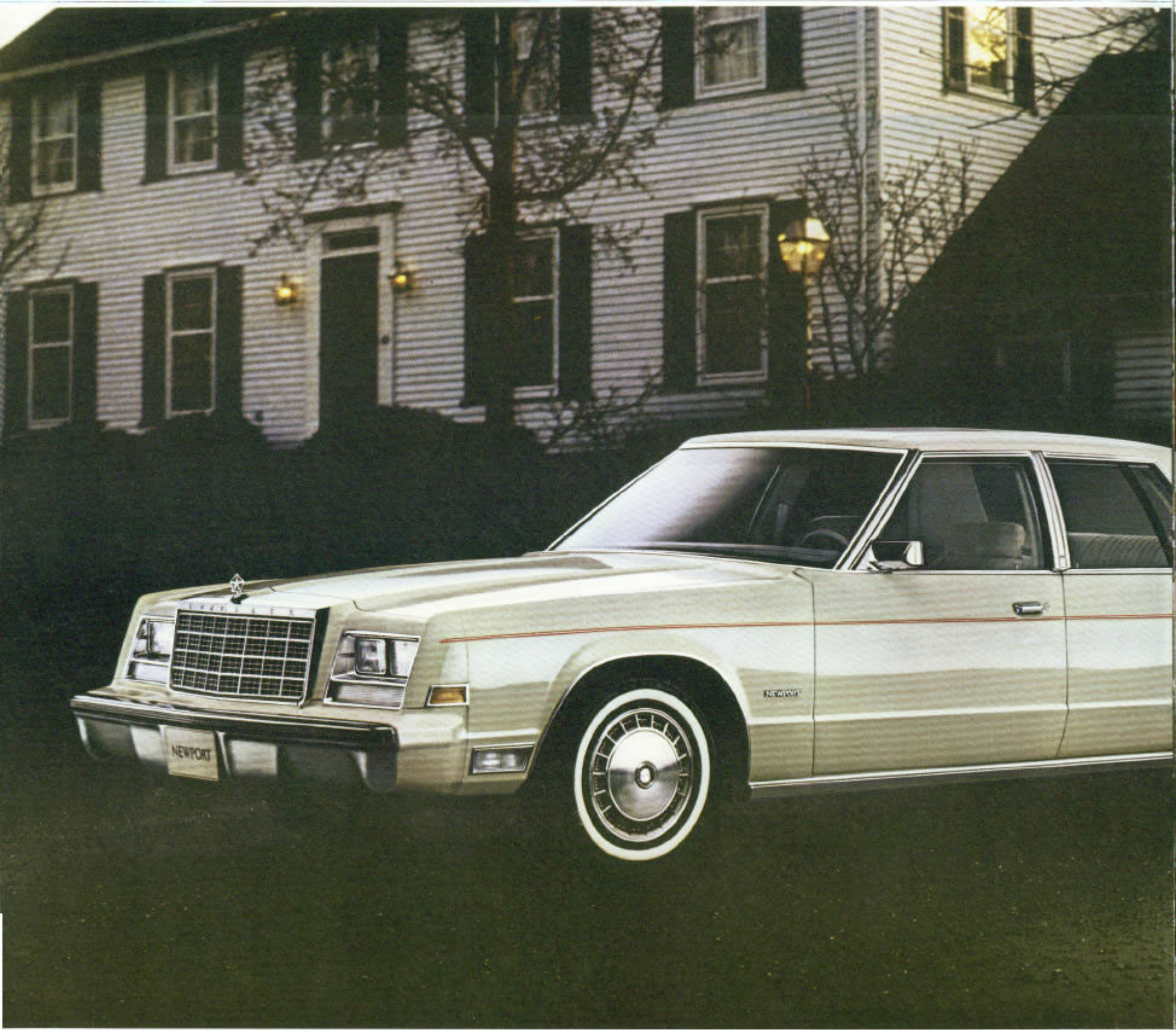
NEW YORKER CHARM

It would be difficult to imagine a more elegant interior. Standard Richlon cloth (right) or optional genuine leather seating (above, right). Folding armrests, front and rear. Individually adjustable front seats with passenger-side recliner. Handsome easy-to-read instrument panel with applique of Featherwood woodgrain texture.

New Yorker. Beyond comparison, yet still within your reach.



NEW YORKER. THE ESSENCE OF ELEGANCE.





Friend Seldom has the term been more appropriate in describing a car. The right car at the right time. A Chrysler in the true sense. Capably equipped, superbly appointed and yet so wonderfully affordable in light of its standard attributes.

A 3.7-liter (225 CID) Slant Six engine. Torque-Flite automatic transmission. Torsion-smooth ride. Power steering. Power front disc/rear drum brakes. Multifunction column-mounted switch with integral turn-signal, headlamp dimmer and windshield washer/wiper controls. Broad complement of readable gauges and reachable controls. Courtesy light under the instrument panel. Warning chimes. Standard Verdi II cloth-and-vinyl seating (shown). Front seat center armrest. Color-keyed carpet. Tinted glass all around. Six-passenger room. Spacious trunk. Flag-type outside mirrors. Deluxe wheel covers. New high-strength steel rear bumper.

A friend named Newport.



NEWPORT. FRIEND OF THE FAMILY.

READY-TO-ORDER FORM *(Certain models, packages and options are subject to specific restrictions, requirements and late availability. Consult your dealer for current ordering information.)*
FIFTH AVENUE EDITION/NEW YORKER/NEWPORT



- New Yorker with "Fifth Avenue Edition" Package



- New Yorker Four-Door Pillared Hardtop



- Newport Four-Door Pillared Hardtop

INTERIOR TRIM



- New Yorker Fifth Avenue**— Champagne leather and vinyl 60/40 individually adjustable seats with folding center armrest and passenger-side seatback recliner (included in Package)

The following seats are offered in blue, heather, green, red or cashmere.



- New Yorker**— Cloth and vinyl 60/40 individually adjustable seats with folding center armrest and passenger-side seatback recliner (standard)



- New Yorker**— Real leather and vinyl 60/40 individually adjustable seats with folding center armrest and passenger-side seatback recliner (optional)



- Newport**— Cloth and vinyl split-back bench seat with folding center armrest (standard)



- Newport**— All-vinyl split-back bench seat with folding center armrest (optional)



- Newport**— Cloth and vinyl 60/40 individually adjustable seats with folding center armrest and passenger-side seatback recliner (optional)



- Newport**— All-vinyl 60/40 individually adjustable seats with folding center armrest and passenger-side seatback recliner (optional)



ENGINES

Federal 49-State

- 3.7 liter (225 CID) 1V, Slant Six (standard on Newport; not available New Yorker)
- 5.2 liter (318 CID) 2V, V-8 (optional on Newport and standard on New Yorker)
- 5.9 liter (360 CID) 2V, V-8 (optional)

High Altitude

- 5.2 liter (318 CID) 4V, V-8 (optional)

California

- 5.2 liter (318 CID) 4V, V-8 (optional Newport and New Yorker)

Note: Since 1980 V-8 substitutes were unavailable at the time this catalog was printed, ask your dealer about current information regarding prices per gallon ratings.

OPTIONAL PACKAGES

Light Group

- Air conditioning, manual (standard New Yorker) • Deluxe color keyed seat belts (standard New Yorker) • AM radio (Newport) • Remote control mirror—left (standard New Yorker) • Remote control mirror, convex—right (New Yorker) • Light Package • Full vinyl roof (not available New Yorker) • Deluxe windshield wipers • Vinyl body-side molding • Undercoating

Light Package

- (Included in Basic Group and "Fifth Avenue Edition" Packages) • Trunk light • Glove box light • Ash receiver light • Map/courtesy light (standard New Yorker) • Ignition switch timer delay light • Door ajar warning light • Low fuel temperature and alternator warning lights • Low washer fluid light • Hood

and brake release light • Rear door courtesy switches

Heavy-Duty Package (Trailer Assist)

- High-capacity radiator • Heavy-duty suspension, heavy-duty rear springs, heavy-duty shock absorbers • Battery—500-amp Long-Life • Variable load turn-signal flasher • Extra-wide wheel rim • Auxiliary transmission oil cooler • 3.2 axle ratio • Heavy-duty 65-amp alternator • Seven-wire harness with jumpers • Power steering oil cooler

**Not available in California.*

Open Road Handling Package

- Firm Frame suspension, heavy-duty sway bar, front and rear; heavy-duty shock absorbers; heavy-duty front torsion bars, heavy-duty rear springs • Special Firm Feel power steering

TIRES AND WHEELS

- P195/75R15—Glass-belted radial white sidewall (standard on Newport)
- P205/75R15—Steel-belted radial wide white sidewall (standard on New Yorker, optional on Newport)
- P225/70R15—Steel-belted radial wide white sidewall (optional)
- P205/75R15—Aramid-bolted radial wide sidewall with gold stripe (optional)

- Road Wheels—Forged aluminum (optional)
- Wheel Cover—Deluxe (standard New Yorker)
- Wheel Cover—Premier (standard on New Yorker, optional on Newport)
- Wheel Cover—Premium turbine-style (optional)
- Wheel Cover—Wire (optional)

- Extra-wide wheel rims • P225/70R15 wider white sidewall steel-belted radial tires

"Fifth Avenue Edition" Package

- New black walnut metallic exterior paint or Designer's Cream upper and Designer's Beige lower exterior body colors • Leather and vinyl-trimmed 60/40 split-back bench seat with folding center armrest front and rear (champagne color) • Push out pile carpeting • Beige and cashmere body-side accent tape stripes with beige and cream exterior or gold stripes with black walnut exterior • Padded landau black Bancroft grain vinyl roof with cream and beige exterior or padded black walnut reptile-grain with black walnut metallic exterior • Special edge

lighted quarter windows with "Fifth Avenue" script • Simulated front fender louvers • Color-keyed bumper guards, front and rear • Color-keyed protective rub strips, front and rear • P205/75R15 steel-belted radial-ply wide white sidewall tires • Wire wheel covers • Light Package • Tilt steering column • Deluxe windshield wipers with intermittent wipe feature • Leather-covered two-spoke steering wheel • Driftwood applique on instrument panel and door trim panels • Champagne interior garnish molding, instrument panel safety pad, package shift, headlining and rear pillar trim

Two-Tone Paint Package

Includes accent tape stripes (see page 12 for color availability)

PICTURED OPTIONS

Wheel Dress-Up.

1. Fifth Avenue Edition wire wheel covers, optional on New Yorker and Newport.

2. Stylish forged aluminum road wheels, optional on New Yorker and Newport.

3. Electronic Digital Clock.

Vacuum fluorescent digital display and outstanding accuracy—to within a minute a month—are assets of this Newport option. (Chronometer standard on Fifth Avenue Edition and New Yorker.)

4. Tilt Steering Wheel.

For your personal driving convenience, a steering wheel that adjusts to six different

positions. (Standard on Fifth Avenue.)

5. AM/FM Stereo with Cassette Player.

This new radio option for 1980 features the Dolby® noise reduction system that minimizes hiss on Dolby encoded cassette cartridges and FM broadcasts.

(Dolby is a trademark of Dolby Laboratories.)

Air Conditioning.

Semi-automatic temperature control or manual control air conditioning systems offer quiet performance, rapid cool-down rates and six outlets.

Ask your dealer for details regarding restrictions applicable to the later installation of air conditioning.

6. Automatic Speed Control/Intermittent Wipers.

These optional features can be incorporated into the standard multifunction column-mounted control lever. The intermittent windshield wiper has a delay mode that can be set for pauses of 2 to 15 seconds.

7. Electronic Search-Tune AM/FM Stereo.

This ear-appealing radio option boasts ten station digital recall plus AM/FM Search-Tune feature to automatically search out local or distant stations.

8. Convex Outside Mirror.

Still another Chrysler styling and convenience touch: a right convex remote control mirror.

9. 5/50 Protection Plan.

This optional service contract, the longest protection plan* of any domestic manufacturer, covers major power train components for five years or 50,000 miles (whichever comes first) from the time you take delivery of your new Chrysler. The plan, which has a \$50 deductible per repair visit, also has an allowance for alternate transportation and towing. Ask your dealer for full details.

**Provision of plans vary with manufacturer.*

OTHER OPTIONS

- Air Conditioning—Manual control (standard New Yorker)
- Air Conditioning—Automatic temperature control (V-8 only)
- Automatic Speed Control—V-8 only
- Axle—Sure Grip differential (introduces conventional spare tire at extra cost)
- Battery—500 amp Long-Life
- Bumper Guards—Front and rear (standard New Yorker)
- Clock—Electronic digital (standard New Yorker)
- Cooling—Maximum engine
- Defroster—Electrically heated rear window (required on all vehicles registered in New York State)
- Emissions Control System and Testing—Required on all vehicles registered in California
- Emissions Control System and Testing—Required on optional high-altitude engine
- Floor Mats—Front and rear
- Gas Cap—Locking
- Glass—Clear (windshield; no charge)
- Horn—Three-note

Lights

- Cornering
- Halogen Headlamp System—High and low beams
- Illuminated Entry System

Interior Container—Front

Mirrors

- Remote Control—Left (standard New Yorker)
- Remote Control—Left and convex right (Newport only)
- Remote Control—Convex right (New Yorker only)
- Vanity—Illuminated, driver's side
- Vanity—Illuminated, passenger's side

- Moldings—Vinyl/body-side, color-keyed to vinyl roof and/or interior color (not available with Fifth Avenue)
- Pedal Dress-Up

Power

- Antenna—Not available with CB radio
- Deck Release—Electric (trunk lamp included)
- Door Locks

- Seat—60/40 left or bench
- Windows—Standard New Yorker
- Protectors—Door edge

Radios

- AM—Not available New Yorker
- AM/FM—Not available New Yorker
- AM/FM Stereo—Standard New Yorker
- AM/FM Stereo and Cassette with Dolby*
- AM/FM Stereo with CB transceiver with Fixed Tri-Band Antenna
- AM/FM Stereo with Eight-Track Stereo Tape Deck
- AM/FM Stereo with Electronic Search-Tune

**Dolby is a trademark of Dolby Laboratories.*

- Roof—Sun, glass, power-operated
- Roof—Vinyl full (not available New Yorker)—colors available: light blue, dark blue, light green, dark red, light heather, tan, white, black and cream
- Seat Belts—Deluxe color-keyed with tension reliever and automatic release (standard New Yorker)

- Shock Absorbers—Heavy-duty
- Spare Tire—Conventional
- Speaker—Rear, single (available only with manual radio)

Steering Wheels

- Luxury—Not available with tilt steering (standard New Yorker)
- Two Spoke—Leather-covered (tilt steering required at extra cost)
- Tilt—Deluxe windshield wipers required at extra cost (not available with luxury steering wheel)

- Stripes—Body-side and rear tape (Newport)
- Suspension—Heavy duty (heavy duty rear springs, heavy-duty shock absorbers)
- Trunk Dress-Up—Standard New Yorker
- Undercoating
- Windshield Wipers—Deluxe, with intermittent wipe feature
- 5/50 Protection Plan

STANDARD SPECIFICATIONS

ENGINE	Newport: 3.7-liter (225 CID) 1V, Slant Six (49 states, federal) New Yorker: 5.2-liter (318 CID) 2V, V-8 (49 states, federal)
SUSPENSION	Front—Torsion bar, independent Rear—Multi-leaf
AXLE RATIO*	2.9:1 six cylinder, 2.4:1 V-8
TIRES:	Newport: P195/75R15—Glass-belted radial white sidewall New Yorker: P205/75R15—Steel-belted radial wide white sidewall
BRAKES	Front—Disc, power Rear—Drum, power
ELECTRICAL:	Battery—370-amp Maintenance-Free w/3.7-liter Slant Six, 325-amp w/5.2-liter V-8, Alternator—65-amp

DIMENSIONS, WEIGHT AND CAPACITY

	NEWPORT	NEW YORKER
OVERALL LENGTH (1)	220.2"	221.5"
OVERALL WIDTH	77.6"	77.6"
OVERALL HEIGHT	54.5"	54.5"
WHEELBASE	118.5"	118.5"
TURNING DIAMETER (curb-to-curb)	42.4'	42.4'
CURB WEIGHT (estimated)	3,654 lbs	3,920 lbs
THREAD: (front/rear)	61.9"/62.0"	61.9"/62.0"
TRUNK CAPACITY (est)	21.3 cu ft	21.3 cu ft
PASSENGER CAPACITY	6	6
FUEL CAPACITY:	21 gallons	21 gallons

(1) Includes bumper guards.

STANDARD EQUIPMENT

- Air conditioning—manual control (New Yorker)
- Armrests—Newport, front doors, rear doors, and front seat center-mounted folding type—New Yorker, front doors, rear doors, and front and rear seat center-mounted folding type
- Ash receivers—front and rear
- Battery test indicator
- Belts—safety; deluxe color-keyed with tension reliever and automatic release (New Yorker)
- Bumper guards—front and rear (New Yorker)
- Bumper rub strips—front and rear
- Chimes—warning; seat belt, tones for ignition key and headlights-on
- Cigarette lighter—front (Newport), front and two rear (New Yorker)
- Clean air system
- Clock—digital (New Yorker)
- Corrosion protection—galvanized steel on critical body areas plus seven-step dip and spray process
- Diagnostic connector—engine electrical
- Directional signals with lane-change feature
- Electronic voltage regulator
- Electronic ignition
- Electronic spark control system—except 3.7-liter (225 CID) and 5.2-liter (318 CID) 2V
- Flasher—hazard warning
- Floor covering—color-keyed cut pile carpet in passenger compartment
- Gauges—temperature, alternator and fuel (oil pressure light)
- Glass—tinted; all windows
- Glove box lock
- Head restraints—right and left
- Heater and defroster—bi-level type
- Hood release—inside
- Hood silencer pad
- Horns—dual
- Lights—

- courtesy light under instrument panel (Newport), brake system warning, transmission selector lever quadrant, front side-marker, rear side-marker backup lights, dome light (Newport), front door switches for interior lights, door courtesy lights (New Yorker), rear seat reading lights (New Yorker)
- Mirrors—inside rearview, day/night, outside, flag-type manual left and right (Newport), outside, flag-type remote left and manual right (New Yorker)
- Cloth-covered molded headliner—color-keyed and foam-backed
- Multifunction column switch—turn signal control lever with integral headlamp dimmer control and windshield wiper control
- Power steering
- Power windows (New Yorker)
- Radio—AM/FM stereo (New Yorker)
- Steering wheel—two-spoke (Newport), three-spoke (New Yorker) with vinyl center pad and woodtone rim insert and on spokes
- Stripes—body side and hood (New Yorker)
- Suspension—torsion bars, front; leaf springs, rear; front anti-sway bar
- Tire—spare; compact
- Trunk dress-up (New Yorker)
- Vinyl roof—padded landau (New Yorker) available in: light blue, dark blue, light green, dark green, medium red, dark red, light heather, tan, brown, white and black
- Wheel covers—deluxe 15-inch (Newport); premier 15-inch (New Yorker)
- Windshield wipers—electric; two-speed with washers

Chrysler Corporation reserves the right to make changes at any time without notice or obligation in prices, colors, materials, equipment or specifications and to change or discontinue models. See your dealer for complete current information.

Chrysler engineers quality, luxury and value into a full-size car.

COLORS

Monotone Colors



Two-Tone Colors: (Upper/Lower)



STANDARD SAFETY FEATURES

- Backup lights
- Brake system warning light (also serves as indicator when parking brake is applied)
- Combination lap-shoulder belts for the driver and right-front passenger, and lap belts for all other passengers
- Double ball joint rear-view mirror mount
- Dual-braking system with separate brake fluid reservoirs in the master cylinder
- Dual throttle return springs
- Electric windshield washers and wipers
- Energy-absorbing bumper systems
- Energy-absorbing front seatbacks
- Energy-absorbing steering column
- Fade-resistant front disc brakes
- Front-seat head restraints
- Glare reduction measures for windshield wipers, instrument panel and steering wheel
- Hazard-warning flasher system
- Headlamp and wiper circuit breakers with automatic reset
- Ignition and steering column lock
- Inside and outside rearview

- Interlocking door latches
- "Key-left-in-ignition" warning tone
- Non-override door locks (except driver's door)
- Padded instrument panel and sun visors
- Recessed inside-door release handles
- Reinforced windshield header and roof
- Resilient window crank knobs
- Rotary glove-box latch
- Safety-Rim wheels
- Seat-belt reminder chime system
- Side-door beams
- Side-marker lights and reflectors
- Turn signals with lane-change features

Corrosion Protection

Chrysler Corporation's corrosion protection is unsurpassed in the industry. It includes the use of galvanized sheet metal panels, one of the best known methods of corrosion protection, as well as the seven-step dip-and-spray process. Both keep your Chrysler looking new for years to come.

Buy or Lease a Chrysler Fifth Avenue, New Yorker or Newport.



A PRODUCT OF CHRYSLER CORPORATION



MOPAR parts are engineered by Chrysler Corporation for use in your new Chrysler. When replacement is necessary, be sure to specify MOPAR parts. Used by professional mechanics all over the world.

MARKET MOTOR CO.

625 W. MAIN STREET

PHONE 533-5515

CANFIELD, OHIO 44408