



# 1976 CAPRI II

The sexy European road car imported by Lincoln-Mercury



For as many years as Americans have owned exotic automobiles, European design and craftsmanship have been associated with many of the best. It is in that tradition of excellence that Lincoln-Mercury introduces to America . . . Capri II Ghia. Pictured here with the V-6 Option, this 3-door sports coupe of international reputation has felt the inspired touch of Italy's Ghia design studios. The lines are classic, the luxury considerable. But beyond visual impressions, this sophisticated road machine's styling is aerodynamically efficient . . .

its size and weight approach fuel economy excellent . . . carrying capacity sensible . . . performance. Consider also the German craftsmanship. In climatic extremes from the Arctic to Finland, Capri II conquered hot and cold fuel-handling tests. It prevailed over punishing tests which simulated the stresses of more than a half million kilometers (over a million miles) of consumer driving. Now Lincoln-Mercury invites you to test this extraordinary road car. Ghia. The Europeans knew what they wanted.



The balance of function and comfort inside Capri II Ghia is precise. Luxurious high-back bucket seats adjust to a wide variety of driving positions and recline fully as well. They're carefully covered in soft, smooth, brushed nylon cloth, or, if you prefer, a handsomely embossed vinyl. The steering wheel is covered in leather. Understandably, the dimensional relationship between seating, steering wheel, gearshift (optional Select-Shift automatic transmission shown), foot pedals, and the impressive array of gauges, switches, and controls is excellent. To the rear, at the sides of the third door, large

extraction vents change the air more than twice each minute. Before you road test the Capri II Ghia, allow enough time to familiarize yourself with the interior elements. European design and craftsmanship deserve an intensive appraisal.

1. Ribbed in texture and appearance, luxurious upholstery cloth is nylon-based for durability. 2. Full console incorporates clock and deep storage compartment. 3. Restraint system belts retract into side trim panels behind the front doors. 4. Large map pockets in the front seat backs are typical of the Ghia's luxurious trim. A map light, cut-pile carpeting, and assist handles are also standard.

Gauges on either side of speedometer/odometer and tachometer take charging, oil pressure, fuel, and temperature readings.

High beam, turn signal, ignition warning, and brake warning indicator lights are between and under speedometer and tachometer.



Hazard flasher light and switch, hood release are at extreme lower left. Parking and headlight switches above them.

Lever on steering column left incorporates turn indicator, high/low headlight beam switch, and dual-note horn control.

Ignition and optional rear window wiper/washer switches are to lower right of steering column. Just above, low and high speed windshield wiper switches. Washer switch is foot-operated on left.

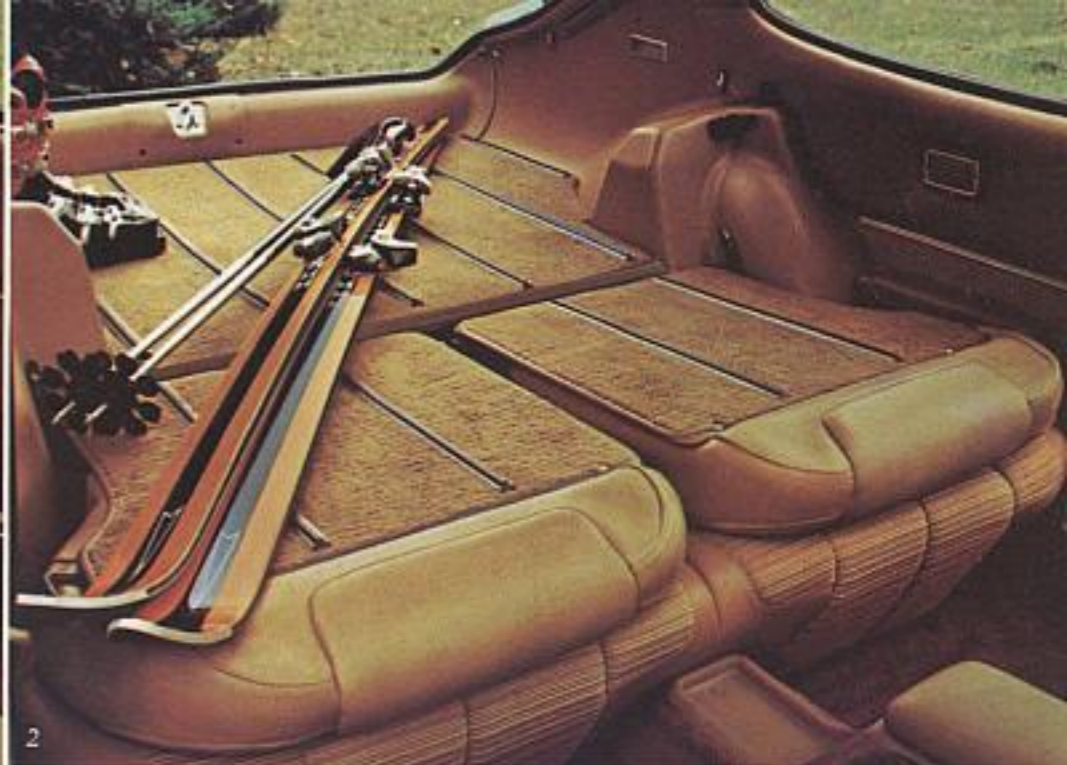
Left of controls for optional AM/FM radio and air conditioning are instrument panel light dimmer switch, fasten seat belt indicator light, and control/indicator light for optional electric rear window defroster.



Capri II is a road car. It couldn't be otherwise because the Europeans are, to say the very least, enthusiastic about their cars and their driving. Capri II is designed and built to be driven. It is not basic transportation, but much more . . . a sophisticated machine with spirit. It accelerates, handles, and brakes smoothly and predictably. Power front disc brakes, rack-and-pinion steering, four-speed manual transmission, front and rear stabilizer bars, and steel-belted radials are, of course, standard equipment. Full instrumentation monitors engine performance. A responsive 2.3 litre OHC 4-cylinder engine is basic, an impressive 2.8 litre OHV V-6 available as an option. And although the ride of a fine road car is often traditionally stiff, even harsh, the Capri II could well surprise you with its remarkably civilized ride. This characteristic is enhanced by liberal utilization of sound insulation and the overall tightness of the car. All these factors bearing on total performance lead again to one premise. The Capri II must be driven to be appreciated.

*1. Sensibly powered for balanced acceleration and fuel economy, Capri II is responsive in typical traffic situations. 2. Wide 5½" wheels are cast-aluminum to reduce unsprung weight. Standard with Ghia, they're illustrated with 185/70 HRx13 tires from V-6 Option. 3. Capri II's precise performance is an asset in adverse driving conditions. 4. Power front disc brakes resist fade, perform well in the wet.*

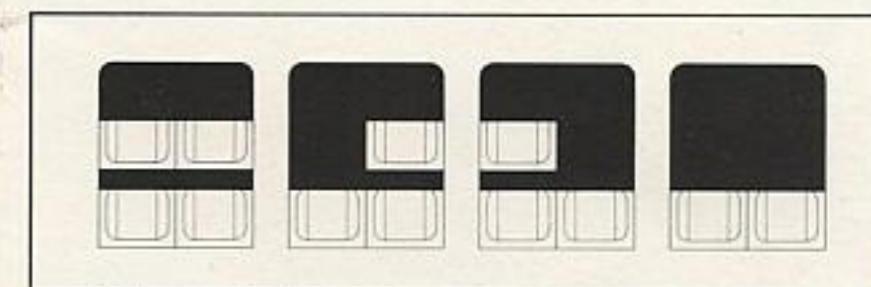




In Europe, even cars designed and built for performance are often practical. Which is as it should be. In these times, versatility can provide the final incentive for ownership. The Capri II Ghia uses its third door and individually folding rear seats to conveniently become a two, three, or four passenger vehicle with proportionate cargo capacity. Access to the rear is through the counterbalanced third door, which responds to a touch of the push-button lock by lifting with fingertip effort. The load area is flat, at a good height, and uncompromised by spare tire storage. Changing tools and spare are under the load

deck. Metal skid strips facilitate easy movement of cargo in the luxuriously carpeted load area. For a small car, the Capri II Ghia's carrying capacity is considerable. Capability is 644.1 litres (22.6 cu. ft.) with both rear seats down. Also important is the convenience provided by the Ghia's console compartment and lockable, lighted glovebox.

1. Capri II Ghia rear seats are individually contoured . . . and can be raised or lowered singly or in combination, as shown in the drawing below. 2. Typical of Ghia luxury, the cut-pile carpeting extends to the seat backs and lower doors.



Versatile Ghia interior handles four, three, or two passengers.

Capri II Ghia with vinyl roof, sun roof, electric rear window defroster, and V-6 options.



An intriguing alternative to the Ghia level of luxury is offered by the Decor Group Option. This should be thought of not so much as less luxury, but rather, a different style in luxury. Seating is upholstered in a distinctive sew pattern of embossed vinyl and features the individually contoured, individually folding style of rear seat. A special console and steering wheel are unique to the Decor Group Option. And a touch of luxury shared with the Ghia is the beautifully woodtone-appliqued instrument panel.

1. Distinctively European rear lighting assembly has integrated backup lamp, amber and red signal and stop lights. 2. Opening quarter window is standard with Ghia and Decor Group. 3. Functional luxury of map light also common to Ghia and Decor Group. 4. The spacious Capri II glovebox opens to tray position, has two cup inserts.

Capri II Decor Group Option with cast-aluminum wheels, vinyl roof, racing mirror, and V-6 options.





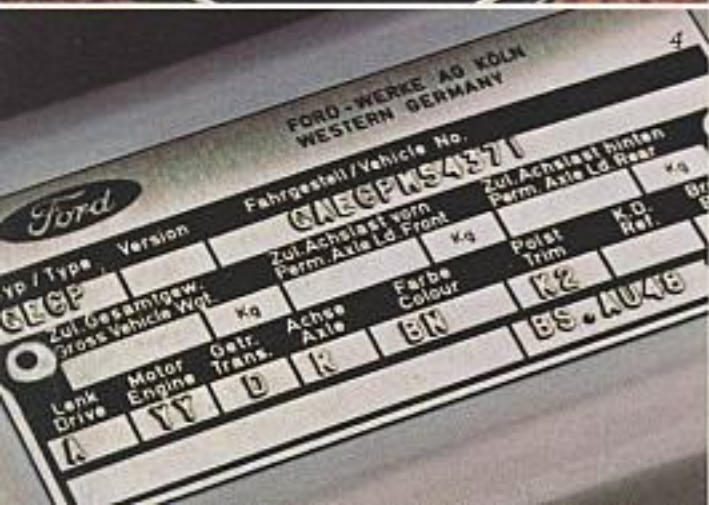
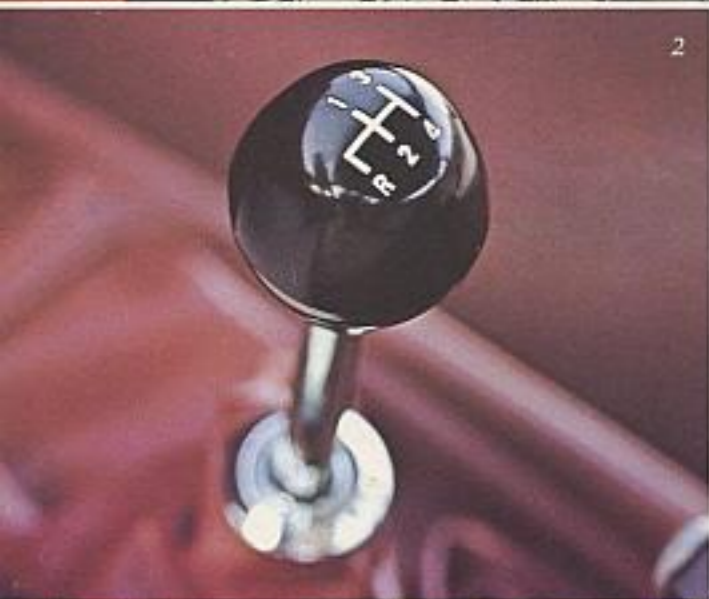
This is the basic Capri II. A little less luxurious than the Ghia and Decor Group models . . . but is it less road car? Emphatically, no. The basic Capri II has the same standard 2.3 litre OHC engine, 4-speed manual transmission, rack-and-pinion steering, power front disc brakes, and steel-belted radial tires. Full instrumentation, color-keyed hi-flex bumpers, protective bodyside molding, and styled steel wheels are also standard. Power steering, 5 1/2" cast-aluminum wheels, and several

other features are available at extra cost. All in all, the basic Capri II is a well-equipped European road machine. It could be luxurious enough.

*1. The influence of German craftsmanship is revealed in the precise vinyl upholstery of the reclining front bucket seats. 2. Rear bench seat, loop-pile carpeting, and interior courtesy light are standard. 3. To create the practicality of a mini-wagon, rear seat back folds neatly forward.*



Capri II with V-6 Option. Instrument panel shows optional AM radio.



For some Americans, European design and craftsmanship will not be enough . . . with a 2.3 litre OHC engine. Lincoln-Mercury accordingly recommends the V-6 Option. Much more than just the 2.8 litre OHV V-6 engine, this option involves the modification of the following performance-related systems. The suspension gets heavy-duty springs and shock absorbers. Larger brakes and clutch are added. As is a dual exhaust system. The steel-belted radials are wider than those on 2.3 litre OHC powered models. The 4-speed manual transmission is heavy-duty. The cooling system has greater capacity. Cosmetic change is minimal . . . 2.8 engine badges appearing just behind the front wheels to identify any Ghia, Decor Group or basic Capri II model equipped with this comprehensive performance package. European design and craftsmanship with V-6 power. An option for the enthusiast.

1. Steel-belted radials are large 185/70 HRx13 size. Along with Capri II's wide track, they contribute much to handling and stability. 2. Heavy-duty 4-speed gearbox is smooth and precise. 3. Full instrumentation is simply executed, reads out at a glance. Outside the car, there's excellent visibility front, rear, and to sides. 4. Vehicle identification plate is proof of German origin, reminder of Capri II overall quality.



Capri II with V-6 and electric rear window defroster options.





## Standard Features

### CAPRI II

- 2.3 litre OHC 4-cylinder engine
- 4-speed manual transmission
- Power front disc brakes
- 165SRx13 steel-belted radials
- Styled steel wheels
- Rack-and-pinion steering
- Stabilizer bars, front and rear
- High-output heater
- Flow-Thru power ventilation
- Full instrumentation
- Color-keyed hi-flex bumpers
- Reclining front bucket seats
- Fold-down rear bench seat
- Loop-pile carpeting throughout
- Passenger sun visor vanity mirror
- Cigar lighter with one front, two rear ashtrays
- Inside hood release
- Day/night interior mirror
- Courtesy light
- Protective bodyside molding
- Solid-state ignition

More information and illustrations on pages 12 and 13. Also, see pages 18 and 19 for specifications.

### CAPRI II DECOR GROUP OPTION

Includes all Capri II standard features (listed above) with the following additions and changes:

- Embossed vinyl seating surfaces and trim panels
- Individual contoured rear seats with individually folding backs
- Console
- Adjustable map light
- Woodtone-applied instrument panel
- Special molded vinyl steering wheel rim
- Loop-pile carpeting on lower doors
- Opening quarter window
- Glovebox light and lock
- Assist handles front and rear on headliner
- Dual-note horn

More information and illustrations on pages 10 and 11. Also, see pages 18 and 19 for specifications.

### CAPRI II GHIA

Includes all Capri II standard features with the following additions and changes:

- High-back luxury seats upholstered in cloth or knit vinyl
- Adjustable headrests
- Full console with storage compartment
- Map pockets in seat backs
- Individual contoured luxury rear seats with folding backs
- Rear seat armrests
- Clock
- Woodtone-applied instrument panel
- Leather-wrapped steering wheel
- Instrument panel grab handle
- Assist handles front and rear on headliner
- Glovebox light and lock
- Cut-pile carpeting on load floor, rear seat backs, and lower doors
- Load floor skid strips
- 5½" cast-aluminum wheels
- Color-keyed matched racing mirrors (remote control for driver's side)
- Bright exhaust extension
- Opening quarter window
- Luggage compartment lights
- Dual-note horn

More information and illustrations on pages 2 through 9. Also, see pages 18 and 19 for specifications.

### CAPRI II V-6 OPTION

Available with Capri II, Capri II Decor Group Option, and Capri II Ghia. Includes all standard features for model selected with the following additions and changes:

- 2.8 litre OHV 6-cylinder engine
- Heavy-duty 4-speed manual transmission
- Larger clutch
- Larger brakes
- 185/70 HRx13 steel-belted radials
- Dual exhaust system
- Heavy-duty springs and shock absorbers
- Larger capacity cooling system

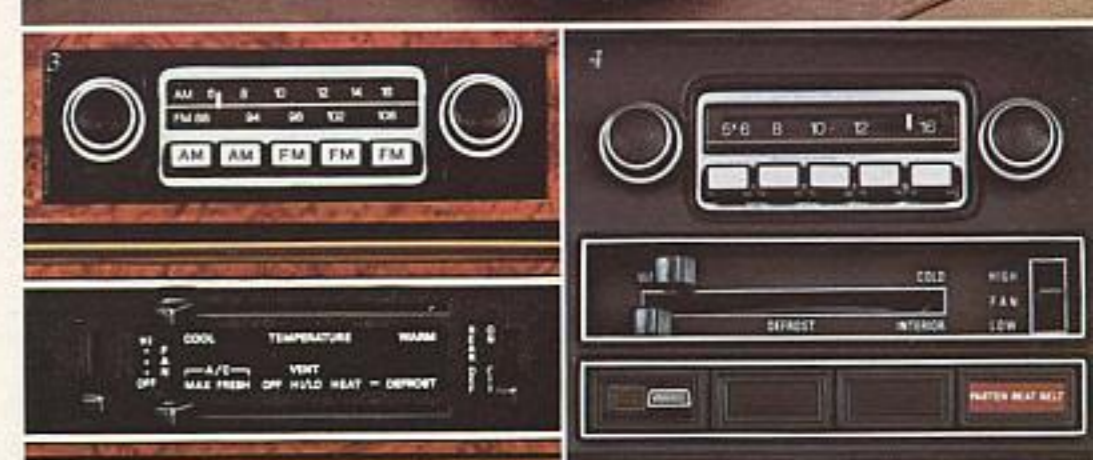
More information and illustrations on pages 14 and 15. Also, see pages 18 and 19 for specifications.

## Optional Features

Personalizing this car is relatively simple. Once preference has been established for the Capri II, Capri II Decor Group Option, or Capri II Ghia, it is necessary to choose an appropriate level of performance. The sportier, more powerful 2.8 litre OHV V-6 offers an alternative to the standard 2.3 litre OHC 4-cylinder engine. Lincoln-Mercury research projects that nearly half of Capri II buyers will want the V-6 Option. Any Capri II is an exceptionally well-equipped car. Nevertheless, there are available several important, perhaps unexpected, options.

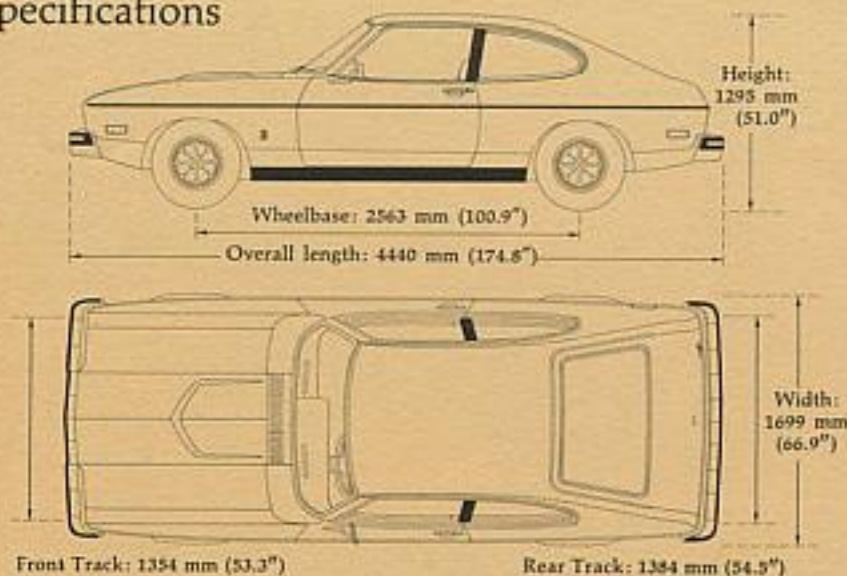
1. On a Capri II, a sunroof is more than a sunroof. Shown here in combination with the vinyl roof option, its smooth manual operation admits fresh air and sunshine. 2. In addition, it can be tilted up at the rear for improved ventilation. 3. AM/FM radio, and controls for air conditioning. 4. The AM radio features push-button tuning. Standard heater control panel can be seen just below. 5. Tonneau-style vinyl luggage cover accommodates belongings best kept out of sight in rear load area. 6. Depending on climate, an electric rear window defroster (mandatory in New York State) could be important. 7. Addition of washer and wiper helps eliminate visibility problems to the rear. 8. Select-Shift automatic transmission is shown here in standard Ghia console.

Full tinted glass (mandatory with air conditioning), power steering, driver's side remote control racing mirror, and 5½" cast-aluminum wheels (mirror and wheels standard on Ghia) complete the limited selection of Capri II options.



Your Lincoln-Mercury dealer has an informative videotape on the Capri II. Ask him to screen it for you.

## Specifications



Luggage Capacity, rear seat up: 210.9 litres (7.4 cu. ft.). Luggage Capacity, rear seat down: 644.1 litres (22.6 cu. ft.). Fuel Tank Capacity: 48.1 litres (12.7 gal.). Approximate Curb Weight: ranges from 1174 kg (2591 lbs.) for Base Capri II with no options to 1379 kg (2996 lbs.) for Capri II Ghia with all options, including V-6.

### SIZE COMPARISON

Perspective can be gained here by comparing the basic dimensions of the 1975 Porsche 911S. This familiar road car is about 25.4 mm (1") higher than Capri II, 127 mm (5") shorter in overall length, and 89 mm (3.5") narrower. The Porsche's front track is slightly wider, the rear track slightly narrower than that of Capri II. As a point of reference for those more familiar with American cars, Capri is considerably smaller than Nova and Dart sized compacts.

ENGINE DATA	4 CYLINDER	6 CYLINDER			
Engine Type	OHC In-Line	OHV 60° Vee			
Displacement	2.3 litres (140.0 cu. in.)	2.8 litres (170.8 cu. in.)			
Bore x Stroke	96.0 x 79.5 mm (3.78 x 3.13")	93.0 x 68.6 mm (3.66 x 2.70")			
Compression	8.4:1	8.2:1			
Ignition	Solid State	Solid State			
Carburetor	Holley-Weber	Motorcraft 2150			
Alternator	35 amp.**	35 amp.**			
Cooling System	7.2 litres (7.6 qt.)	7.8 litres (8.2 qt.)			
Battery	55 amp.-hr.*	55 amp.-hr.			
Exhaust System	Single	Dual			
Rear Axle Ratio	3.44:1	3.09:1†			
Tires—Steel-Belted Radial Ply	165 SR x 13	185/70 HR x 13			
Power Brakes—Front Disc	244.6 mm (9.63")	247.7 mm (9.75")			
—Rear Drum	228.6 x 44.5 mm (9 x 1.75")	228.6 x 57.2 mm (9 x 2.25")			
Clutch	215.9 mm (8.5")	241.3 mm (9.5")			
Manual Transmission Gear Ratios	1st	2nd	3rd	4th	Rev.
4 Cylinder	3.65:1	1.97:1	1.37:1	1.00:1	3.66:1
6 Cylinder	3.36:1	1.81:1	1.26:1	1.00:1	3.37:1

\*66 amp.-hr. with automatic transmission. \*\*55 amp. with air conditioning. †3.22:1 in Calif.

### COLOR CHOICES

Exterior colors are white, dark red, bright red, yellow, and metallic shades of silver, medium blue, bronze, and light green. For the interior, saddle, black, tan, saddle-and-white, and black-and-red are available, depending on exterior color choice. The optional vinyl roof is either black or tobacco, again based on selection of the exterior/interior color combination.

### MAINTENANCE

Technological advances such as solid-state ignition render Capri II an economical car to maintain.

Under normal conditions, the average driver will find it necessary to change oil only once in 8045 kilometers (5000 miles). After an initial change at 8045 kilometers, the oil filter will typically be replaced every 16,090 kilometers (10,000 miles). A definite advantage over conventional systems, solid-state ignition prolongs spark plug life and eliminates points and condenser replacements. Lubrication is scheduled for 48,270 kilometers (30,000 miles).

For continued top performance be sure to specify genuine Motorcraft parts and Autolite Spark Plugs whenever replacement is necessary.

## Functional Features

### Ford Motor Company Lifeguard Design Safety Features

#### OCCUPANT PROTECTION

Safety-designed front end and roof structure. Double-yoke safety latches and hinges plus steel guard rails in side doors. Integral lap and shoulder belts with single retractor continuous loop belts and positive reminder warning light/buzzer for front seat occupants. Lap belts with mini-buckles and retractors for rear seating positions. Energy-absorbing steering column and wheel. Energy-absorbing armrests and safety-designed door handles. Energy-absorbing instrument panel with padding for right front passenger. Safety glovebox latch. Padded sun visors. Safety-designed coat hooks. Self-locking front seat backs with head restraints and padded energy-absorbing tops. Safety-designed radio control knobs and push buttons on cars with radios. Impact-absorbing laminated safety glass windshield with inside yield-away rearview mirror. Flame-resistant interior materials.

#### OPERATING SAFETY

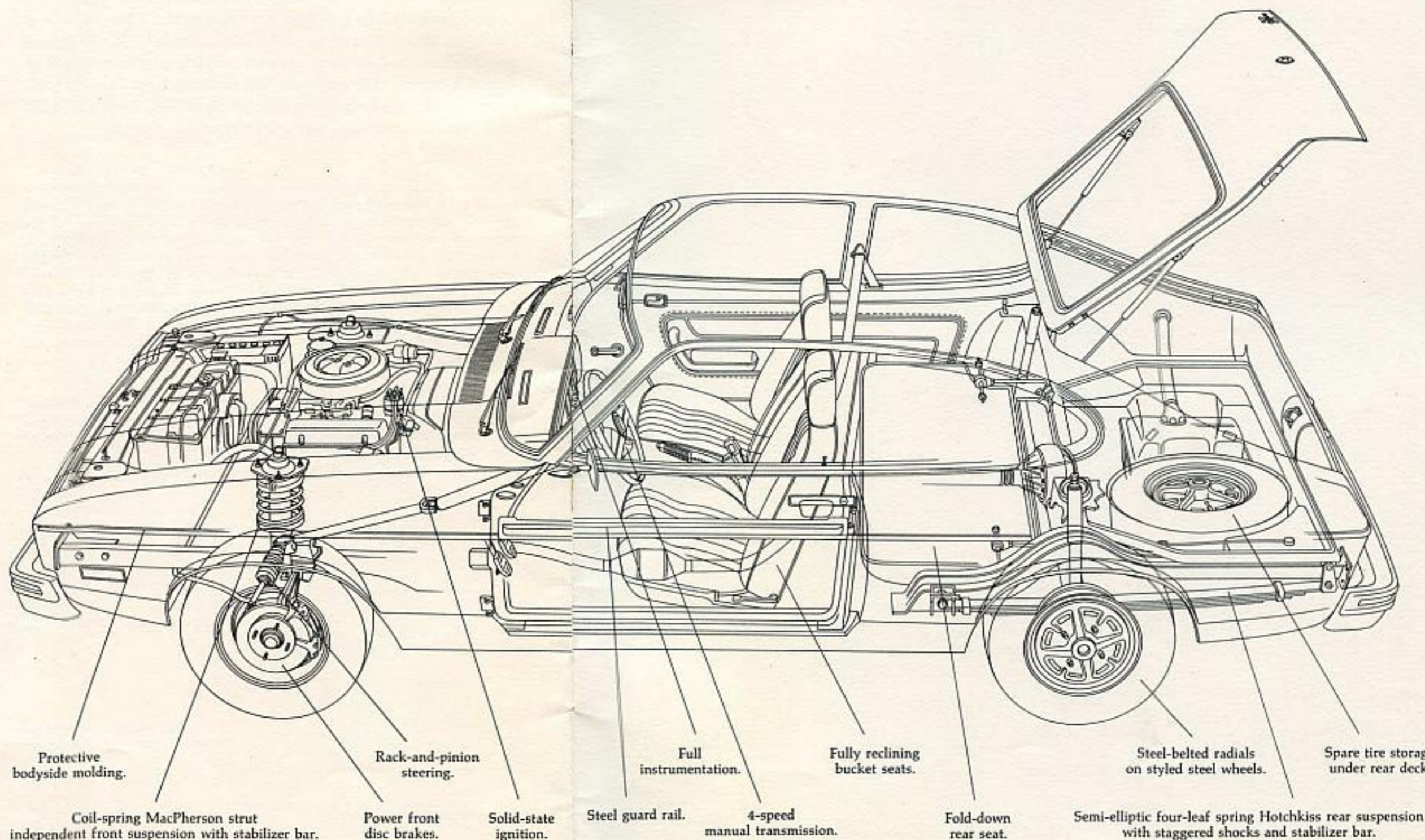
Safety rim wheels and load-rated tires. Dual hydraulic brake system with warning light and corrosion-resistant lines. Parking lights coupled with headlamps. Backup and side marker lights. Hazard warning flasher. Turn indicators with lane-changing signal feature. Two-speed windshield wipers with washers. Outside rearview mirror, driver's side. Glare-reduced instrument panel padding, steering wheel hub, windshield wiper arms and windshield pillars. Uniform transmission shift quadrant on cars with automatic transmissions. Continuously variable intensity illuminated controls for wiper/washer, defrost/defog, and climate control. Safety hood latch system.

#### ANTI-THEFT

Locking steering column with warning buzzer. Non-reversing odometer. Visible vehicle identification number.

Form No. C-75-203

Litho in U.S.A.



Information shown here was correct when approved for printing. Lincoln-Mercury Division reserves the right to discontinue or change specifications or designs at any time, without incurring any obligations. Some features shown or described are optional equipment items which are available at extra charge. Some options are required in combination with other options.

# CAPRI II

LINCOLN-MERCURY DIVISION

