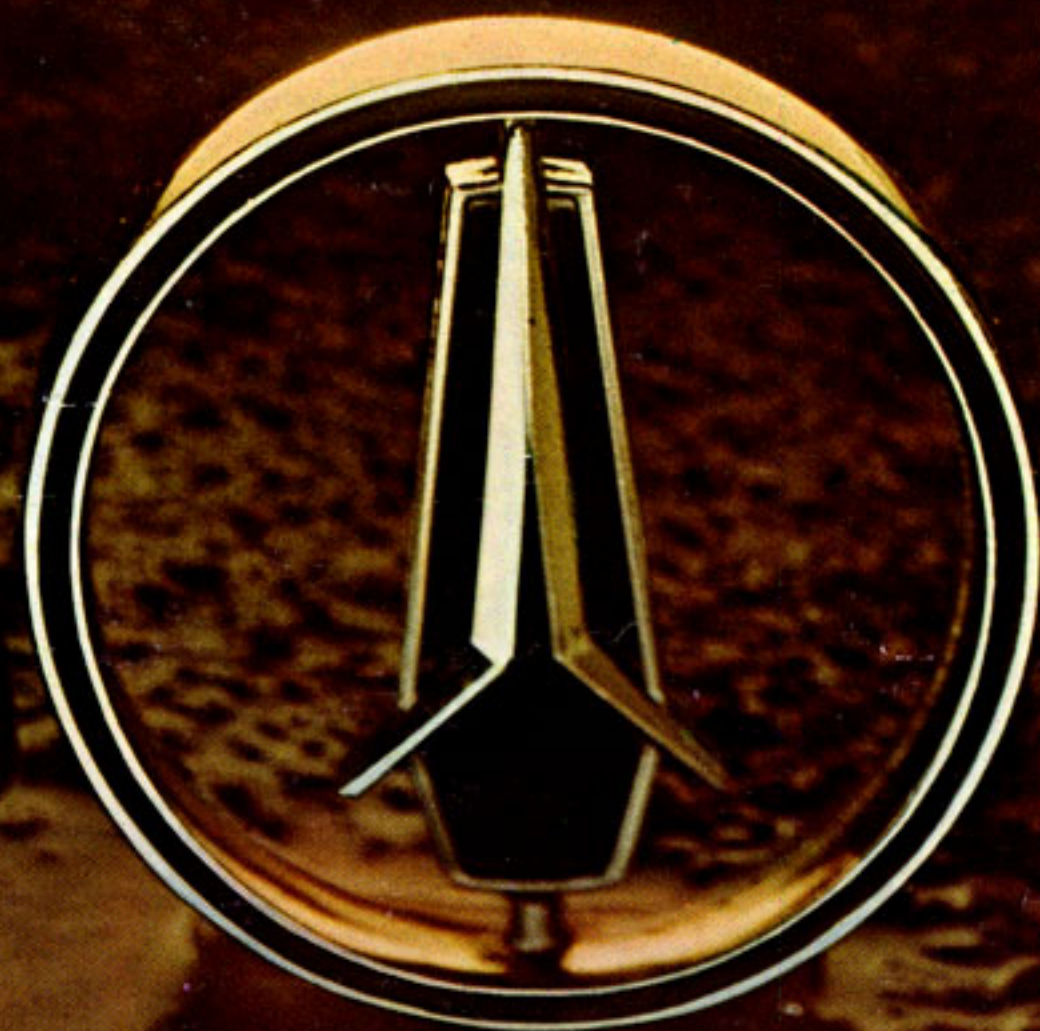


1976 CHRYSLER-PLYMOUTH

CHRYSLER/CORDOBA/GRAN FURY/FURY/VOLARÉ/VALIANT/DUSTER/VOYAGER/TRAIL DUSTER



Volaré

Premier Coupe

Full-size comfort in a new small car.
This 1976 Volaré is proving that you can have your economy and enjoy it, too.

It has a European-style seating position that gives you a heightened sense of space and visibility. With sweeping glass areas and a surprising amount of head room, leg room, and hip room for relaxed, uncrowded comfort. Even Volaré's exceptionally large door openings give you another convenient advantage.

The Volaré Premier Coupe has fine-car features like shag carpeting, dual reclining 60/40 split-bench seats, luxury steering wheel, premium door trim, premium wheel covers, power steering and power disc brakes.

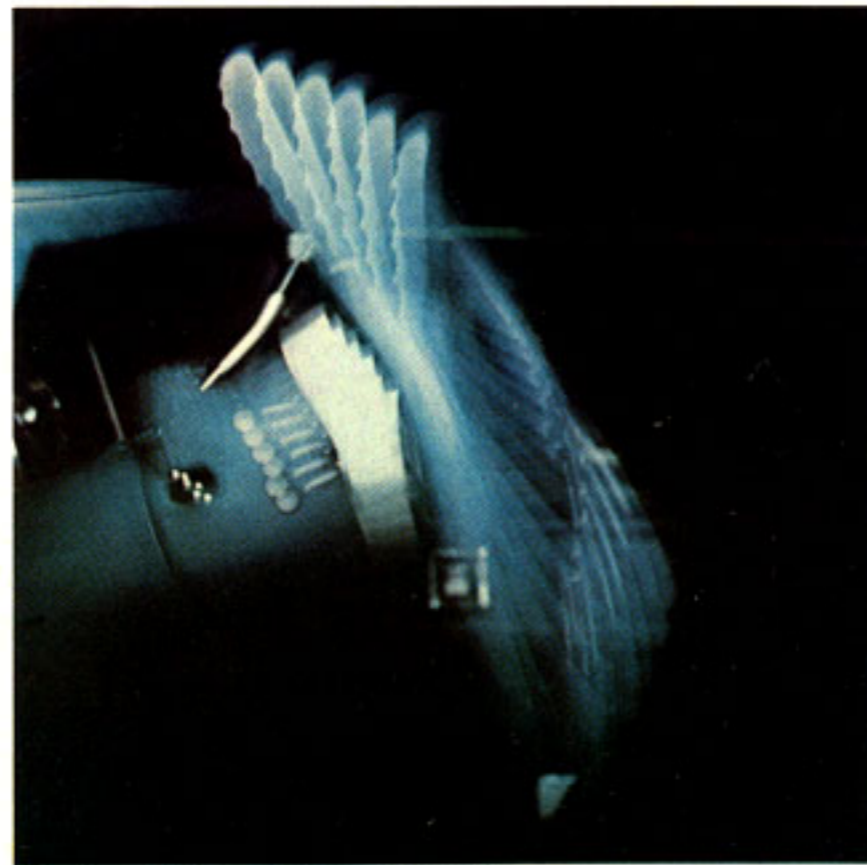
Volaré Premier's economy potential starts with the 225 Six, or the 318 V-8 with standard TorqueFlite automatic transmission. Along with a new Isolated Transverse Suspension System that helps produce that smooth, big-car ride.



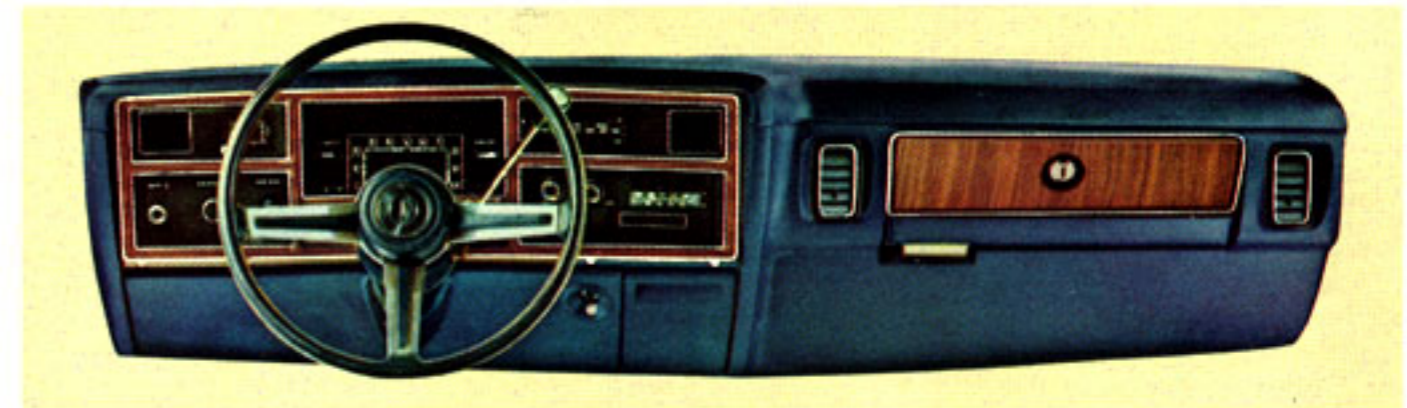
Volaré Premier 2-Door Coupe with standard Landau vinyl roof and elegant opera windows.



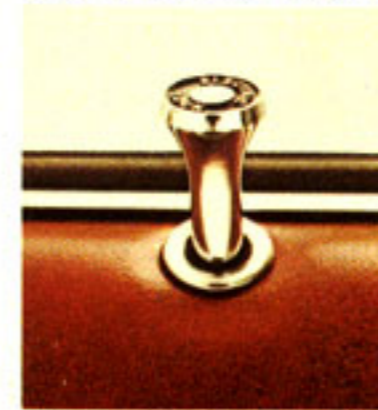
Optional all-vinyl bucket seats, individually adjustable.



Optional Tilt steering column for extra driving comfort.



Fully appointed modular instrument panel is designed for easy servicing.



Opt. power door locks.



Optional Automatic Speed Control.



Volaré

Premier 4-Door Sedan & Wagon

The great American small car. It's a major innovation in American small car design. Volaré has adapted the seating position of a European car, to give you a new feeling of spaciousness and visibility. With a surprising amount of head room, leg room, and hip room. Even the spare tire is recessed in a floor well to give you more trunk space.

And Volaré Premier Sedan takes fine-car luxury features like a standard vinyl roof, modular instrument panel with lockable glove box, deluxe sound insulation and makes that standard equipment. For options you can have power windows, power seats, 4-speaker stereo AM/FM radio, rapid cool-down air-conditioning, tilt steering column and more.

But one of Volaré's greatest assets is a new Isolated Transverse Suspension System, which gives you a ride that's as smooth and quiet as the ride in a large car. Another good reason to put yourself in a Volaré Premier.

Volaré Premier 4-Door Sedan has beautiful lines, aerodynamically designed to reduce air-drag. Full vinyl roof is one of many standard features.



Volaré Wagon with new features like liftgate cargo door and spare tire floor well. In the Premier Wagon, deluxe pleated vinyl bench seats, and carpeted floor and cargo deck are some of the fine standard features.

Premier Sedan optional cloth-and-vinyl trim shown on standard 60/40 split bench with reclining seat backs.

Volaré

& Volaré Custom 2-Door Coupe

The new small car with the big quiet ride. Now you don't have to give up the comfortable ride of a big car when you buy a small economy car. Volaré has come up with a new Isolated Transverse Suspension System combined with comprehensive noise-reducing components and deluxe sound insulation. What you experience is firm, positive control and stability.

And Volaré Custom has big ideas about interior comfort. Expansive glass areas. Exceptionally long doors. And a new seating position with roominess in all directions, in the manner of a European car.

Volaré Custom has economy built into fuel-conserving engine modifications. Even the aerodynamics of Volaré's design help reduce air drag, resulting in good fuel economy and handling characteristics at highway speeds.

Big-car comfort and ride—small car economy. That's what the new Volaré Custom is driving at. And it gets there.



Volaré Custom 2-Door Coupe with optional 2-tone paint.



Volaré Custom standard cloth-and-vinyl bench seat.



"Road Runner" optional vinyl bucket seats.



Volaré 2-Door Coupe with "Road Runner" optional package.



Volaré 4-Door Sedan with optional vinyl roof and body side molding.

Volaré & Volaré Custom 4-Door Sedans

Economy you can feel comfortable with. Volaré Custom has taken a European-style position on interior seat design and placement. And come up with exceptional head room, leg room, and hip room. Wide sweeping glass areas give you a nice uncrowded feeling and excellent visibility. And Volaré's long doors let you in and out with ease.

And on the road, that comfortable ride is the direct result of a new Isolated Transverse Suspension System, equipped with a standard front sway bar. "Quiet" components like rubber suspension mounts isolate road noise. And reduce a lot of the vibration you expect in a small-car ride.

Along with all Volaré Custom's comfort, quiet and luxury interior detail, you have economy in many forms. Engine modifications like low idle speeds, optional Overdrive-4 manual transmission and aerodynamic design for reduced air drag. Small-car economy—big-car ride.

That's how Volaré gets it together for you in 1976.



Volaré Custom 4-Door Sedan with optional vinyl roof.



Standard Volaré all-vinyl bench seat.



Volaré Custom standard deluxe cloth-and-vinyl bench seat.

Duster

Plymouth's leader in low pricing.

People who know a good thing when they see it, drive it, and compare it, know all about Duster. It's been a solid success in styling and value. Because so many careful car buyers are finding that they can have good mileage without moving down to the subcompact class. 1976 Duster has it all—economy, space and comfort.

Inside, you have room for five and every inch is made for comfort and good looks. There's wide, foam-cushioned seating in a tasteful selection of interiors, colors and co-ordinated trim. The standard bench seat is handsomely fashioned in cloth-and-vinyl. Or you can choose optional all-vinyl seating for tailored good looks. Duster has sound insulation and sealers between you and road noise or air disturbance. The trunk is sized to hold much more luggage than you'd expect a compact could handle. And the SpaceMaker option lets you add even more room with a fold-down rear seat.

You can select a rear axle ratio that gets good gas mileage out of your engine/transmission team, which includes the availability of over-drive 4-speed manual transmission. It all means you can look for great gas economy. Duster's engineering features the Electronic Ignition System that has no points or condenser to replace, ever.

Add that saving potential to Duster's low price and excellent trade-in value. And you've got a compact that couldn't be more right for today.



Duster Coupe with Silver Duster optional decor package.



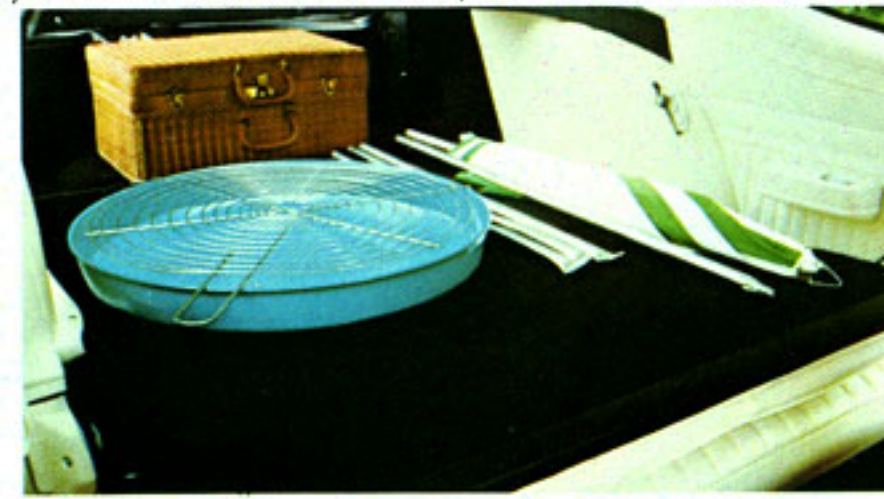
Optional "Boca Raton" cloth-and-vinyl bench seats. Standard with the Silver Duster Package.



Duster instrument panel with easy-to-read dials shown with optional decor dress-up trim.



Optional Rallye road wheel.



Optional Duster SpaceMaker package.



Valiant 4-Door Sedan with Brougham package.

Valiant

Remarkably smart, comfortable, well-equipped. You know the Valiant Brougham option package is something special when you check out the plush velour bucket or bench seating, with shag carpeting and wood-grain inserts on the instrument panel. Look further for optional courtesy lighting, carpeted trunk, remote mirror, day/night rearview mirror, vinyl roof and a complete sound insulation system, and a very attractive purchase price, plus operating economy. Valiant for 1976.

Scamp

Exciting ideas about small size. Scamp has all-vinyl pleated bench seats with a fine selection of coordinated colors and trim. It's roomy, relaxing, easy to own. And gives you engineering features like Unibody construction and Electronic Ignition System. Options include power steering, power brakes and much more. So you know Scamp will be all the car you want.



Scamp 2-Door Hardtop.



Valiant Brougham optional velour-and-vinyl bucket seats.

Fury Sport

& Fury 2-Door Hardtops

Comfort, luxury you can't overlook. In 1976 you can discover all the reasons—and more—why this Fury is so popular.

Inside Fury Sport, you have the excitement of velour-and-vinyl split-back bench seating with center armrest. And deeply contoured optional (at no charge) all-vinyl bucket seats, shag carpeting, two-spoke deluxe steering wheel and handsome instrument panel with circular dials.

This year, we've added the distinction of optional louvered windows to Fury Sport's sleek, sloping body lines. Tape stripes, stand-up hood medallion, optional vinyl roof and optional 15" road wheels are features you couldn't overlook—and wouldn't want to.

In Fury, you have room to be comfortable with cloth-and-vinyl bench seats, color-keyed carpeting, wide 12" rearview mirror and 18" wiper blades. Fury features like front disc brakes, electronic ignition, torsion-bar suspension and optional power steering (standard on 8-cyl. models) make the 1976 Small Fury the car that's good news from the word "go".



Fury Sport 2-Door Hardtop with optional louvered windows and canopy vinyl roof.



Fury Sport's no cost optional all-vinyl bucket seats with folding center armrest.



Fury 2-Door Hardtop.



Fury Salon 4-Door Sedan.

Fury Salon

& Fury 4-Door Sedans

Styling that's outstanding at the price. You can easily see that Fury Salon has its own brand of contemporary styling and elegance in abundance. Salon's molded fiberglass front panel blends single headlamps and parking lamps. Bright metal trim defines the wheel openings, wide glass areas and headlamp housings.

The effect is pure elegance. Carpeting is rich cut-pile shag. You enjoy the comfort of velour-trimmed seating, wide center fold-down armrest, and luxury door trim. The optional spare tire and trunk covers of loop-pile weave carpet help protect baggage and other scratchable surfaces.

On the road, you have two standard power choices: the 225 Six or 318 V-8, with glass-belted 14" tires and optional power steering (standard on 8-cyl. models).

Options like 60/40 dual reclining seats, sun roof and tilt steering wheel let you tailor Salon to your personal taste in equipment and accessories.

1976 Fury Salon. It could be the car you've always wanted.



Fury 4-Door Sedan.



Salon optional velour cloth-and-vinyl 60/40 bench seat with folding center armrest and dual reclining seat-backs.

Gran Fury Brougham

Inherent quality and elegance.

Just the way this Gran Fury Brougham looks could be enough. Its full-size stature and fine sense of proportion give you an indication of the refinements you'll find inside.

The 6-adult size of the passenger compartment has expansive glass area. Upper-level ventilation adds a gentle flow of air front to back.

The standard and splendid interior is the cloth-and-vinyl 50/50 bench seat in a brocade motif with folding center armrests, luxury door trim with pull-handles, and passenger-side recliner on the 4-door sedan. And the deep-pile richness of nylon carpeting extends up the lower door panels. Gran Fury Brougham comes equipped with a 400 cu. in. V-8 with TorqueFlite automatic transmission, power steering, power front disc brakes and steel-belted radial-ply tires.

1976 Gran Fury Brougham. In so many ways you'll appreciate the pleasure of its company.



Gran Fury Brougham 4-Door Sedan.



Standard brocade-like cloth-and-vinyl 50/50 split-bench seat with folding center armrests.



Gran Fury Brougham 2-Door Hardtop with Formal opera windows and canopy vinyl roof.



Gran Fury Custom 4-Door Sedan and Gran Fury Custom 2-Door Hardtop.

Gran Fury Custom

Value can be beautiful. Full-size room and ride, well-appointed interior, and surprisingly easy to own. That's 1976 Gran Fury Custom. If its price seems attractive, take a long look at the standard features that are already part of Gran Fury Custom. Functional, well-designed modular instrument panel, full carpeting, lighted bin-type glove box with coin-holder, inside hood release, upper-level ventilation system and handsome 2-spoke padded steering wheel.

Up front, you have the smooth power of a 360 V-8 with TorqueFlite automatic transmission, power steering, power front disc brakes and steel-belted radials. And you can choose the fine-car options like air-conditioning, Tilt-Telescope steering column, and stereo radio/tape system.

It's what you'd expect in a car like Gran Fury Custom. A beautiful car with a practical side.



Optional sun roof.



Modular instrument panel with easy-to-read and easy-to-reach controls.



Optional AM/FM stereo radio with 8-track.



Optional convenient remote-control right outside mirror.



Optional vent window.



Standard cloth-and-vinyl split-back bench seat with folding center armrest and plush door trim.

Cordoba

By design, a personal automobile. Cordoba inherits the dignity and distinction that tell you it's pure Chrysler. That much is clear in its new fine grille texture, gleaming hood ornament displaying a unique Cordoba crest and slim body stripe with stylish filigree insert.

But Cordoba is a small Chrysler. Yet in no way less than luxurious in interior space, comfort and appointments you'd expect of a fine automobile. It is this attention to interior design and styling detail that has earned Cordoba the admiration and ownership of so many luxury car buyers.

Cordoba standard features include the smooth power of a V-8 engine with TorqueFlite automatic transmission, power steering, power front disc brakes and steel-belted radial white sidewall tires.

And of course, Cordoba is the beautiful product of engineering excellence that Chrysler has pioneered and developed. Ride and handling, sound reduction, driveability plus economy. You can look for a full-size measure of these qualities in this small, superb Chrysler. 1976 Cordoba.



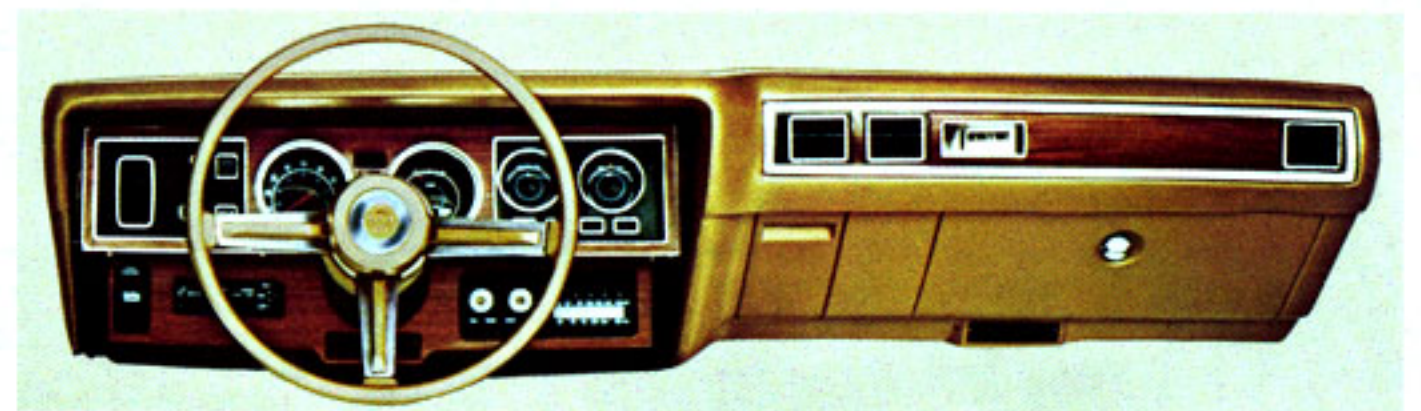
Cordoba with optional Halo vinyl roof and wire wheel covers.



Optional velour cloth-and-vinyl 60/40 split-bench seat.



Optional Corinthian leather bucket seats.



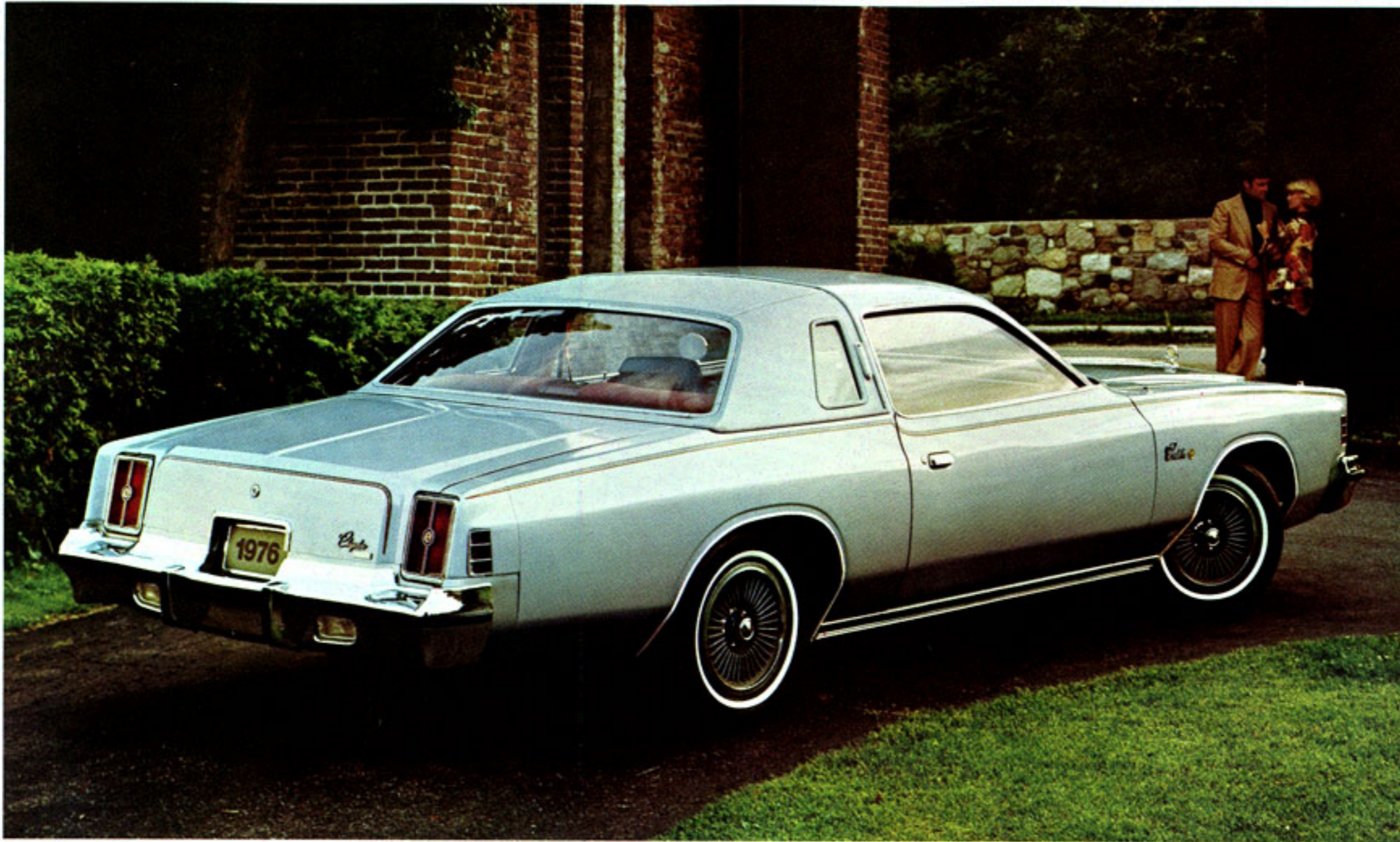
Handsome instrument panel with new wood-tone trim and new dial graphics.



Optional power seats.



Standard electronic digital clock.



Cordoba with optional Landau vinyl roof and optional urethane road wheels.



Cordoba with elegant Landau vinyl roof option.

Cordoba

Inside, the essence of comfort.

Cordoba knows what you like. To start with, Cordoba extends a wide welcome with its large door openings. Rear seat passengers can get in and out with ease. Cordoba gives you choices that appeal to your personal idea of luxurious seating. There's the standard and very sumptuous cashmere-like cloth-and-vinyl bench seat with wide center armrest. The optional Corinthian leather bucket seats. Or the new optional velour 60/40 split-bench seat equipped with dual reclining feature on both driver and passenger seats.

Other fine points that are standard in Cordoba are the electronic digital clock, 3-spoke luxury steering wheel and a total of five interior lights. Isolated torsion-bar suspension and noise-reducing components are an integral part of the road-handling system known as Torsion-Quiet Ride.

It's good to know about. And even better to own in a 1976 Cordoba.



Standard cashmere-like cloth-and-vinyl bench seating with center armrest.

Chrysler New Yorker Brougham

It's the talk of the town. You'd want this 1976 New Yorker Brougham for its looks alone. Regal grille, stand-up medallion, concealed headlamps and slender chrome moldings define Brougham's beautiful body lines and glass area. It is dedicated to luxury in every aspect of fine motoring . . . considerate of your desire for total comfort.

Rich velour interior cloth, finely crafted leather and vinyls indulge your taste for texture and color. Courtesy and convenience lighting includes rear-seat reading lamps and an optional lighted visor vanity mirror. And all this elegance is put in motion by the impressive 440 cu. in. V-8 with TorqueFlite automatic transmission.

You can go as far as you like with luxurious optional equipment. But to begin with, your choice of a 1976 New Yorker Brougham says you have taste. And the means to express it.



New Yorker Brougham 4-Door Hardtop with optional, elegant vinyl roof.



Standard interior in opulent velour cloth, with genuine leather-and-vinyl trim.



New Yorker Brougham 2-Door Hardtop with St. Regis option group.



Newport Custom 4-Door Hardtop with Halo vinyl roof option.



Newport Custom 2-Door Hardtop with optional Halo vinyl roof and chrome-styled road wheels.

Chrysler Newport Custom

Classic elegance a definite flair.

Newport Custom's medallion, deluxe wheel covers, slim chrome moldings and full-length double accent stripes make it all together a spirited automobile. And it's all Chrysler, in ways like Unibody construction and Torsion-Quiet Ride for stability in ride and handling.

Newport Custom gives you interior luxury that's almost lavish in its price range. Loop-pile carpeting, deep foam-cushioned seats in soft fabrics and vinyls, and a handsome modular instrument panel.

You can add a Tilt-Telescope steering column, an electric rear window defroster, AM/FM Search Tune radio and 8-track tape. Or any of the optional equipment that lets you style your 1976 Newport Custom to suit your style of living.



Striking "Highlander" optional cloth-and-vinyl 50/50 bench seat with dual folding center armrests.

Chrysler Newport

Luxury with a fine sense of value.

1976 Newport is an impressive car that lives up to your idea of a Chrysler. Only its price range may surprise you.

Newport standard features live up to your idea of luxury. In 2-door hardtop, 4-door hardtop and 4-door sedan, richly textured cloth-and-vinyl covers the new split-back bench seating. Thick loop-pile carpeting, full-foam seat-backs, sound insulation, modular instrument panel, trip odometer, inside hood release and back-up lamps. Power steering, power front disc brakes and steel-belted radial-ply tires also come along for the ride at no extra cost. Along with Chrysler engineering features that build solid confidence in every 1976 Newport.

And you have a full range of optional equipment that makes buying a fine car like Newport a very personal matter.



Newport 4-Door Sedan with Halo vinyl roof option.



Optional "Castilian" cloth-and-vinyl split-back bench seating with folding center armrest.



Optional power sun roof.



Newport 2-Door Hardtop with Halo vinyl roof option.



Chrysler Town & Country 3-seat wagon with optional luggage rack.



Gran Fury Sport Suburban 3-seat wagon with optional luggage rack.

Chrysler Town & Country

Town & Country's doorgate can close behind a sheet of 4' x 8' paneling with the front seats back and the rear seat folded down. Then handle people in the grand manner of deep-foam cushioning, loop-pile carpeting front to doorgate, padded door trim and courtesy and convenience lighting.

Town & Country handles with the stability of torsion-bar suspension, heavy-duty shock absorbers, power steering and power front disc brakes. And you can have optional automatic height control that adjusts the suspension to variations in load.

Gran Fury Sport Suburban

1976 Gran Fury Sport Suburban puts you in charge of 100.8 cubic feet of cargo space with standard features such as power steering, power front disc brakes, power doorgate window, Unibody construction and torsion-bar suspension. And you have a luxurious carpeted interior and a wide range of optional equipment.



Town & Country standard all-vinyl 50/50 bench seat with reclining passenger seat.

Fury Sport Suburban

Fury Sport Suburban's interior is designed to handle people beautifully with full-foam seat-backs, smart door trim and padded instrument panel. And the optional all-vinyl 60/40 split-bench seats offer you dual reclining seat-backs.

You have the added advantage of power steering, power front disc brakes, a 360 cu. in. V-8 engine, heavy-duty suspension, simulated wood-grain exterior trim, deluxe wheel covers and carpeted cargo area.

Volaré Wagon

Volaré's new European-style seating position provides plenty of head room, leg room, hip room and visibility. And the new Isolated Transverse Suspension System produces a quiet, relaxing big-car ride. You have generous cargo area, an easy-to-open liftgate door and a recessed spare tire well for space and convenience.

With the 225 Six or 318 V-8 you can expect good fuel economy.



Fury Sport Suburban 3-seat wagon with 3-way doorgate and 86.8 cubic feet of cargo volume.



Fury optional all-vinyl 60/40 split-bench seat with dual recliners.



Volaré station wagon with 71.9 cubic feet of cargo volume, optional roof rack and roof air deflector.



Trail Duster Sport with optional steel roof, protection package and chrome-styled road wheels.



Plymouth Voyager, 127-inch wheelbase with optional sliding side door and chrome-styled road wheels.

Trail Duster

On-road comfort and off-road ruggedness. Plymouth 4-wheel drive Trail Duster. There's nothing to stop you from heading for some real country. With plenty of room to stow away the gear you need.

Trail Duster has full-time 4-wheel drive working for it. So that snow and mud and heavy going don't have to hold you back. And you don't have to lock or unlock the front hubs when you head off the road. There's a 2-wheel drive model with independent front suspension—perfect for people who want Trail Duster styling, but don't need 4-wheel drive. Full-foam vinyl seating, armrest pads and color-keyed padded instrument panel are some of the ways Trail Duster combines on-road comfort and off-road adventure.

Voyager

The wagon for all seasons, all reasons. Whatever your driving or travel needs may be, Plymouth Voyager is the vehicle you want it to be. With numerous luxury levels to choose from—Voyager, Voyager Custom or Voyager Sport. And two wheelbases, 109-inch or 127-inch, plus the extended body van. Choose from three models to meet your payload requirements. And Voyager standard features like power front disc brakes, independent front suspension and electronic ignition are just part of the big value story.

For family travel, around-town convenience, comfort and utility, Voyager is your ideal vehicle. At home or away from home.

and here's "The Clincher!"

For the first 12 months of use, any Chrysler Motors Corporation dealer will fix, without charge for parts or labor, any part of our 1976 passenger cars we supply (except tires) which proves defective in normal use, regardless of mileage.

The owner is responsible for normal maintenance service such as changing filters and wiper blades.

We'll even replace many of the expensive parts that could just wear out if you drive enough miles that first year. Even though they're not defective. Brake drums and linings, mufflers, shock absorbers, clutch and pressure plates, tailpipes, headlamps, disc brake discs and pads. All we expect of you is normal, routine maintenance, such as changing filters and wiper blades.

If you make an appointment to come in for warranty repairs and the job can't be completed in one working day, participating dealers will supply you with a loaner. Free.

It's part of our new Owner Care Program.* And it's going to take better care of you and all the people who buy our cars. *(Trail Duster not included.)

Fuel Economy Information

The EPA test results for 1976 model year vehicles were not available at the publication date of this catalog. A supplement listing the results for Chrysler-Plymouth models has been prepared for inclusion in this catalog. Please ask your dealer for a copy if it has not already been inserted.

All product illustrations and specifications are based on authorized information. Although descriptions are believed correct at publication approval, accuracy cannot be guaranteed. Some of the equipment shown on product illustrations is optional, at extra cost. Chrysler Motors Corporation reserves the right to make changes from time to time, without notice or obligation, in prices, specifications, colors and materials, and to change or discontinue models.

1976 Chrysler-Plymouth Exterior Colors: Silver Cloud Metallic • Platinum Metallic (N/A—Fury, Valiant, Volaré) • Powder Blue (N/A—Volaré, Cordoba) • Astral Blue Metallic (N/A—Fury, Valiant, Volaré) • Starlight Blue Metallic (N/A—Fury, Valiant, Volaré) • Vintage Red Metallic (N/A—Volaré) • Bittersweet Metallic (N/A—Valiant, Volaré) • Jade Green Metallic • Tropic Green Metallic (N/A—Valiant, Cordoba) / Deep Sherwood Metallic • Sahara Beige (N/A—Fury, Cordoba) • Saddle Tan (N/A—Fury, Valiant) • Moondust Metallic (N/A—Valiant, Volaré, Cordoba) • Golden Fawn (N/A—Volaré) • Inca Gold Metallic (N/A—Volaré) • Spanish Gold Metallic • Spinnaker White • Formal Black • Jamaican Blue Metallic (N/A—Gran Fury, Chrysler) • Rallye Red (N/A—Gran Fury, Volaré, Chrysler) • Caramel Tan Metallic (N/A—Gran Fury, Chrysler) • Cinnamon Metallic (N/A—Gran Fury, Chrysler Cordoba) • Yellow Blaze (N/A—Gran Fury, Volaré, Chrysler) • Big Sky Blue (Volaré Only) • Spitfire Orange (Volaré Only) • Claret Red (Volaré Only) • Harvest Gold (Volaré Only) • Dark Chestnut, Metallic (Chrysler, Gran Fury Only) • Light Chestnut Metallic (Cordoba Only) • **1976 Voyager and Trail Duster Exterior Colors:** Bright Blue Metallic • Light Blue • Bright Tan Metallic • Medium Gold Metallic • Light Gold • Dark Green Metallic • Light Green Metallic • Bright Green Metallic • White • Sunstone (Additional Charge) • Russet • Bright Red • Silver Cloud Metallic • Yellow.

YOUR SIGNS FOR
MOTORING SATISFACTION.

