

# 1975 Ford Torino

The solid mid-size



*Gran Torino Brougham 4-Door Pillared Hardtop*

Gran Torino Brougham • Gran Torino • Gran Torino Sport • Torino  
Wagon Highlights

The closer you look, the better we look.

## Introducing The 1975 Ford Torino.

# A NEW WAY TO LOOK AT A MID-SIZE CAR.

**Look at the car, then look at the total cost of ownership in three important ways:**

### 1. Purchase Price

As you look at mid-size cars and their prices today, don't forget that it's not what you pay, it's what you *get* for what you pay.

So look at the base sticker price, then look at what you get standard. This year Torino comes to you with a list of standard equipment never before offered on Torino.

#### Here's what you get standard:

- Gas-saving, Steel-Belted Radial Tires
- SelectShift Cruise-O-Matic Transmission
- Power Steering
- Power Front Disc Brakes
- A smooth 351 V-8 with Solid State Ignition
- Even a Vinyl Roof and Opera Window on some models

### 2. Operating Economy

Operating economy is a combination of fuel economy *and* maintenance costs. So as you look at mid-size cars it's important to know not only how far you can go on a tank of gas, but also how frequently your new car will need regularly scheduled service in the course of 50,000 miles.

Torino for 1975 offers gas-saving steel-belted radial ply tires *standard*. And solid state ignition (no need to replace points or condenser). Torino Hardtops have a large 26½ gallon fuel tank for good cruising range that's necessary today. Torino is scheduled for 5,000 miles between oil changes, 30,000 miles between major chassis lubes and has 3-year engine coolant-antifreeze.\* Battery, muffler and key underbody parts are designed for long life. These and other service features can add up to significant savings for you.

\*35 or 40 months as indicated inside glove box.

### 3. Trade-in Value

Today a smart car buyer thinks of what his car will sell for *before* he buys, because he knows that trade-in is a significant part of the total cost of ownership.

A car as attractively styled, solidly built, well

equipped and popular selling as Torino generally tends to retain more of its original sticker price when you're ready to trade again.

### Check Riding Comfort.

The 1975 Torino gives you full 6-passenger comfort inside. There's plenty of room for



legs, knees, heads and hips. Torino's trunk offers over 16 cubic feet of luggage space. And you'll find Torino is engineered with the same-type solid

body/frame construction as our standard-size Fords—one big reason why Torino's ride is so smooth, so quiet.

### Inspect Quality.

Look closely at the fit and finish of doors, body seams, instrument panel, upholstery and carpeting. This will usually give you an idea of how carefully a car is built. We build our mid-size Torino with the same quality and attention to detail as we do our standard-size Ford LTD's.



### The Closer You Look, The Better We Look.

We invite you to look through this book and find out more about our 1975 Torinos. Then test-drive one soon at your Ford Dealer's. Look at it closely in terms of comfort, quality, quiet—and most importantly—cost of ownership. The more you look, the more you'll like what you find about the solid new mid-size Ford Torino.

# GRAN TORINO BROUGHAM

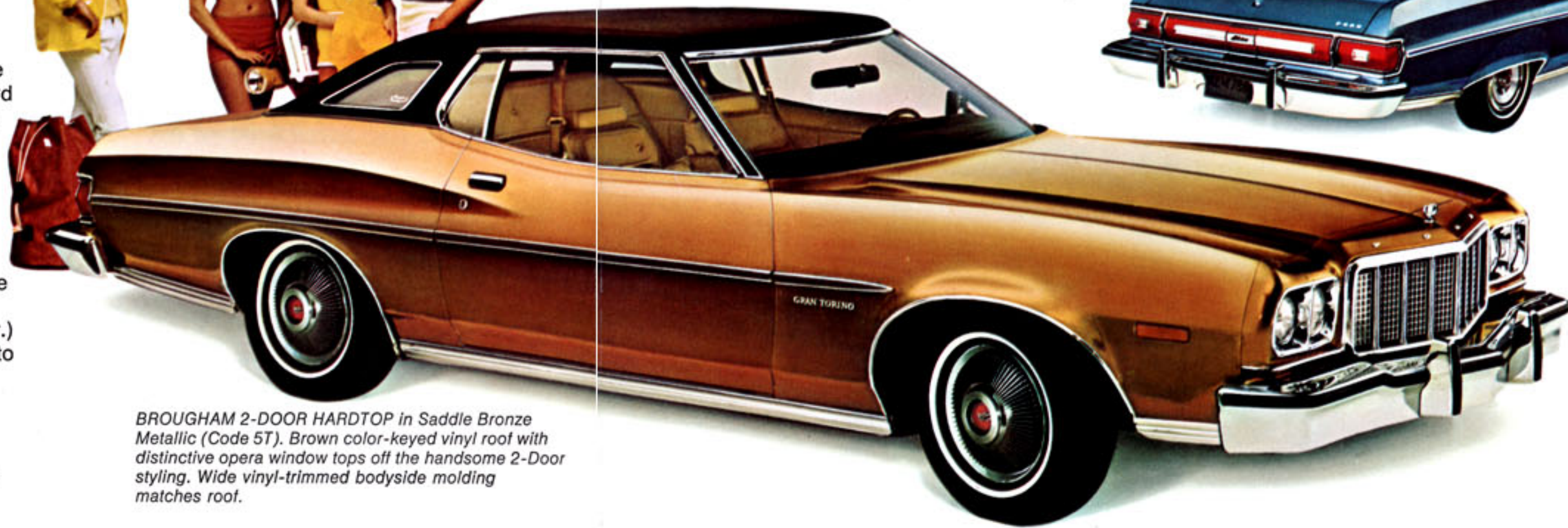
## Our most luxurious Torino.

Brougham's brilliant finish and attention to detail tells you right away that this is our top-of-the-line Torino—a prestige car in every sense of the word. Its impressive list of standard equipment leaves little to be desired. Besides SelectShift Cruise-O-Matic transmission, power brakes and power steering (standard on all Torinos), it comes with fine-car features like a vinyl roof, an opera window on 2-Door models, a wide vinyl-trimmed body molding tastefully keyed to the vinyl roof, deluxe wheel covers, white sidewall steel-belted radial ply tires and generous placement of brightwork. You'll find deep-seated elegance and classic Brougham detailing inside, too. (See page 5 at right, and also "Notable Standard Features," back cover.) All this with a smooth, solid ride and quietness that's hard to believe in a mid-size car.

Brougham is offered in two models: A 2-Door Hardtop and 4-Door Pillared Hardtop. Options such as a power-operated Sunroof, reclining passenger seat and power windows can make your Brougham experience even more exciting, more satisfying. (See pages 8 and 9.)



*BROUGHAM 4-DOOR PILLARED HARDTOP. Shown here in Dark Blue Metallic (Code 3G) with matching vinyl roof. Note the full-width red lens treatment at rear—another special touch on the Brougham.*



*BROUGHAM 2-DOOR HARDTOP in Saddle Bronze Metallic (Code 5T). Brown color-keyed vinyl roof with distinctive opera window tops off the handsome 2-Door styling. Wide vinyl-trimmed bodyside molding matches roof.*

# GRAN TORINO

## Our most popular Torino.

Gran Torino is our best-selling mid-size because it's one of America's best mid-size values—in so many ways! Great operating economy, roomy 6-passenger comfort, a quiet, solid ride and a list of standard features never offered before on Gran Torino. Things like a new 351 CID V-8 with solid state ignition, SelectShift Cruise-O-Matic transmission, power steering and power front disc brakes, steel-belted radial tires, new wiper-mounted windshield washers (wipers sweep the spray across the windshield for better cleaning). With Gran Torino, you even get some of the upper-series Brougham's fine detailing: bright rocker and rear fender moldings, wheel lips and window frames—another example of the thought we've given to value. Choose either the 2-Door Hardtop or the 4-Door Pillared Hardtop model. On page 4, you can see the kind of interior comfort we've designed into these fine mid-size automobiles.



*GRAN TORINO 4-DOOR PILLARED HARDTOP shown here in Dark Red (Code 2M). Four big doors and 118-inch wheelbase provide added roominess, convenience and riding comfort.*



*GRAN TORINO 2-DOOR HARDTOP in Light Green (Code 47). Smart-looking rear styling is highlighted by the wrap-around taillights.*



*GRAN TORINO CLOTH AND VINYL BENCH SEAT. Finished in soft brocade-pattern cloth and vinyl. Comes in Green (Code BG), Black, Blue or Tan. An all-vinyl seat trim is also available in Gran Torino models at slight additional cost.*



*THE MAGNIFICENT BROUGHAM INTERIOR. Here is the Brougham's splendid Westminster Cloth with split bench seats and dual fold-down armrests. (Luxury like this is standard in the Brougham.) Thick cut-pile carpeting, woodtone accents on the steering wheel and instrument panel, bright pedal pads, an electric clock and more (see "Notable Standard Features," back cover). If you wish, you can have your Brougham seats trimmed entirely in super-soft vinyl, instead of Westminster, at no extra cost. Tan (Code FU).*



# GRAN TORINO SPORT

## Our sportiest Torino.

You can be sure its looks, performance and road-worthy handling live up to its name. Sporty exterior styling accents include special "Sport" ID on grille and rear roof pillar; distinctive fuel door ornament; dual paint striping on fenders; wide belt and wheel lip moldings; rocker and lower fender extension moldings; dual color-keyed, remote-controlled mirrors; turbine-type wheel covers and WSW tires. A solid state ignition 351 CID V-8 is standard, with a 400 CID 2-barrel or 460 CID 4-barrel optional. Special handling suspension system, optional axle ratios and other performance options available. (See pages 8-9.) Your Ford Dealer has full details.

*GRAN TORINO SPORT INTERIOR.* Sporty ingredients include super-soft vinyl buckets seats, special instrumentation with tachometer, and more. Flight bench seat with fold-down armrest is available, at no cost. Optional leather-wrapped steering wheel adds to the exciting feel of your Sport interior. White and Black trim (Code DW).

*GRAN TORINO SPORT in Bright Red (Code 2B)* includes sporty striping and other special touches. Dual body-colored racing mirrors and "turbine" styled wheel covers are standard.



# TORINO WAGONS

## From the Wagonmaster.

Who else but Ford could pack so many standard-sized wagon ideas into a mid-size package?

A 3-Way Magic Doorgate that works like a tailgate or a door. Over seven feet of carpeted load length that takes a standard-size plywood paneling flat between the wheelhousings. Nearly 85 cu. ft. of cargo volume. Steel-belted radial ply tires, power steering, power front disc brakes, automatic transmission and a hefty 351 CID V-8—all standard equipment. Rugged all-vinyl interiors with plenty of room for six—even eight with optional Rear Facing Third Seat on Gran Torino and Squire models. A ride that's smooth, solid and quiet.

Three great mid-size models to choose from: The base-priced Torino Wagon . . . the mid-series Gran Torino Wagon . . . and the classic Gran Torino Squire. For more details about Torino Wagons, pick up a copy of the 1975 Ford Station Wagon Catalog. It's free at your Ford Dealer's.



*TORINO WAGON (top illustration).* Low initial cost but no skimping on functional features: 3-way doorgate, lockable below-deck storage, steel-belted radials, solid state ignition, SelectShift Cruise-O-Matic, power steering and power front disc brakes. Light Green Gold Metallic (Code 4Z).

*GRAN TORINO WAGON (center) in Pastel Yellow (Code 6D).* Optional Rear-Facing Third Seat allows seating for two extra passengers.

*BEAUTIFUL GRAN TORINO SQUIRE, in foreground,* features handsome woodlike body paneling, wheel covers, WSW tires and power tailgate window as standard equipment. Saddle Bronze Metallic (Code 5T).

# TORINO

## Our budget-priced Torino.

And just because they're our lowest priced mid-size, doesn't mean you get any less value for your money in terms of basic standard equipment and solid engineering. These are cars you'll be proud to own and drive . . . cars truly built for the times. SelectShift Cruise-O-Matic transmission, a 351 2V V-8 (with solid state ignition), power steering and power front disc brakes, steel-belted radials and wiper-mounted windshield washers are all standard.

For 1975, Torino series models feature new front-end styling—the same look as our higher-series Gran Torino models. There's a choice of 2-Door Hardtop or 4-Door Pillared Hardtop, on wheelbases of 114" and 118" respectively. Inside, you get room for six and handsomely tailored all-vinyl trim. If you're looking for a mid-size car with relatively small sticker price and big standard equipment offering, look no further than our 1975 Torino series.



*TORINO 4-DOOR PILLARED HARDTOP* shown here in Green Glow (4T). Like our Gran Torino and Brougham 4-Door models, it's built on a longer 118-in. wheelbase for good stability and stretch-out comfort.



*TORINO INTERIOR.* Even though Torino is our lowest priced mid-size, you get the same 6-passenger roominess and deep-cushioned comfort found in all the new Torinos. Interior is trimmed in handsome all-vinyl, shown in Tan (Code AU), one of three colors available. Color-keyed cut-pile carpeting comes standard.



*TORINO 2-DOOR HARDTOP.* Solid ride, 6-passenger comfort on a nimble 114-in. wheelbase. Shown in Ginger Glow (Code 5J), one of four optional "Glow" colors.

# OPTIONS

So many ways to add convenience, comfort and pleasure to your Torino driving.

You'll find a wide choice of optional equipment to meet every driving need—convenience, comfort, appearance or performance. Look over this list and make your selection. Your Ford Dealer or Ford salesman will be happy to help you pick out the right options for you and your new Ford Torino.

**Metallic Glow Paint.** Deep lustrous finish adds extra attractiveness to Torino's crisp lines. Available all models in four rich colors: Green Glow, Ginger Glow, Tan Glow and Silver Blue Glow.

**Engine Options.** Two fine power plants to choose from: the 400 CID 2V V-8 and the magnificent 460 CID 4V V-8—both with solid state ignition.

**6-Way Power Seat.** Six-way adjustment allows better seating position for all members of the family, lets you change posture on long trips. Available on full-width bench seat, or driver's side only on split bench seats.

**Manual Reclining Passenger Seat.** Restful on long trips, available on Gran Torino Brougham or on Squire model with Brougham Option.

**Automatic Seat Back Release** (2-Door models). A handy option for rear seat passengers. Automatically disengages seat back latch when door opens.

**Super-Soft Vinyl Trim.** Rich-looking with a glove-soft feel. Standard on Sport model, available on Brougham at no charge. Included in Squire Brougham Option.

**DuraWeave Vinyl Trim.** Looks like fabric, wears and cleans like vinyl. Available on Gran Torino and Gran Torino Squire Wagon models.

**Left-Hand Remote Control Mirror.** Available individually as well as part of Convenience Group, below. Adjusts easily without lowering your window. Bright chrome finish. **Dual Color-Keyed Remote-Controlled Mirrors** also available.

**Convenience Group.** Just what the name says! Includes these items at minimum cost: left- and right-hand chrome outside remote control mirrors, visor vanity mirror, and interval windshield wipers. Also includes spare tire extractor on wagons.

**Sunroof.** Touch a button and presto! Fresh air and sunshine. Opens and closes smoothly and quietly, seals tightly. (2-Door models with vinyl roof.)

**Vinyl Roof.** Always a popular dress-up option. Choice of six colors to match to your body finish: White, Black, Blue, Green, Brown and Tan. Comes standard on Brougham models.

**Radios.** Three fine systems to choose from. **AM/FM Stereo Radio with Tape Player.** Tape player ideal for those who like to select their own music. Dual front door-mounted speakers and dual rear seat speakers provide concert hall sound. **AM/FM Stereo** also comes with dual front and rear speakers. **AM Radio** offers great monaural sound and push-button selection. **Dual Rear Seat Speakers** also available as separate option with AM system.

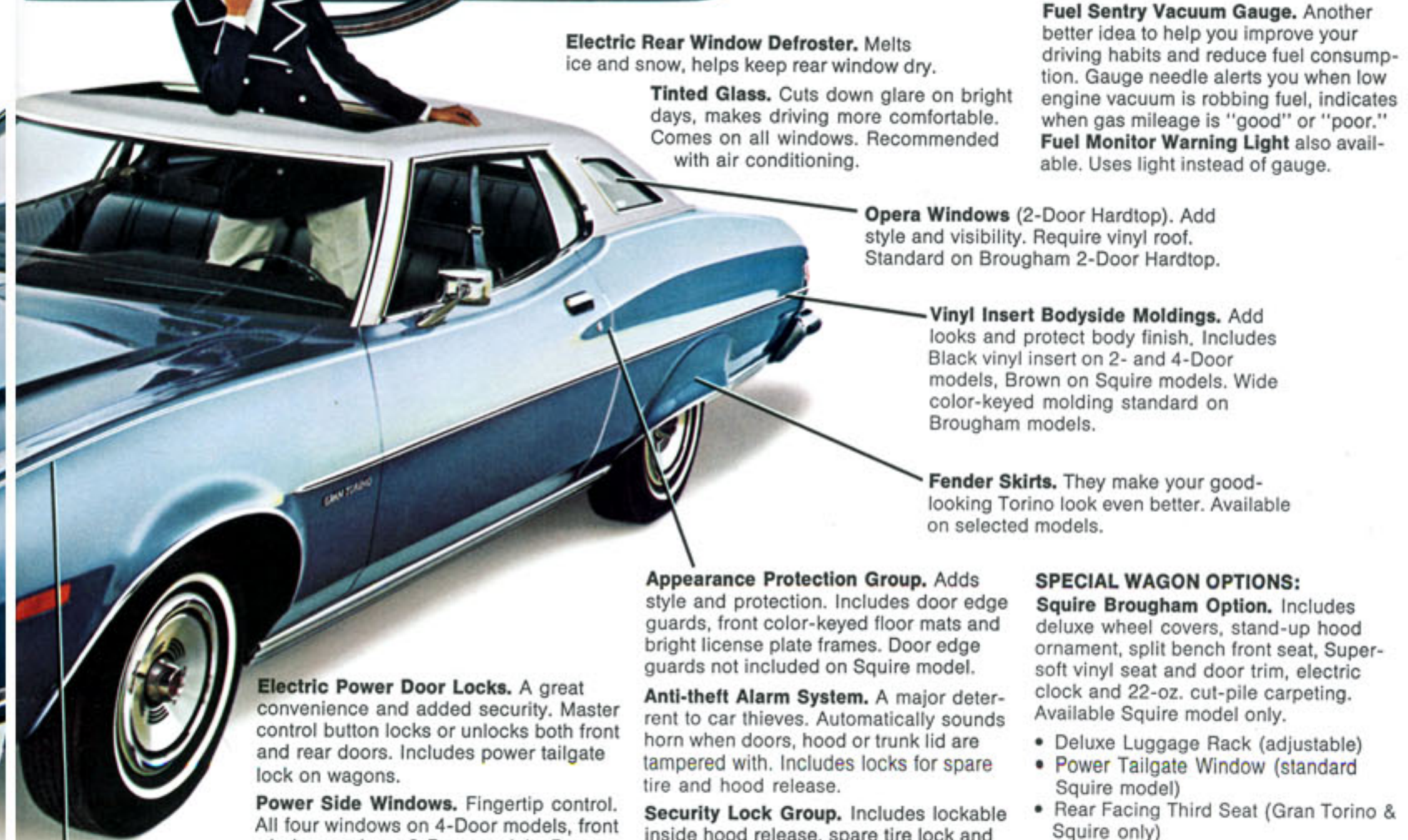
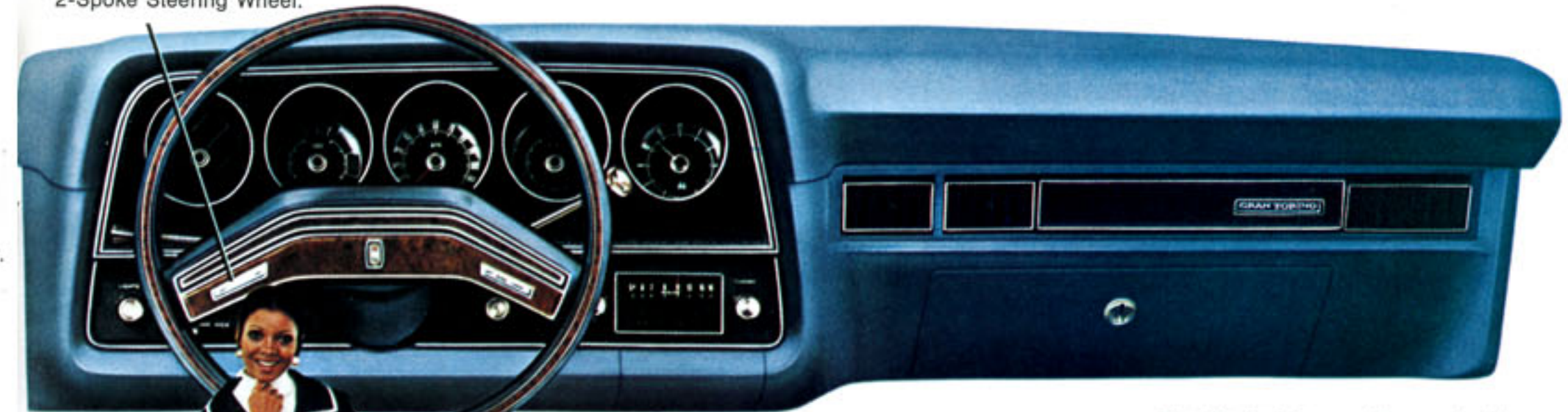
**SelectAir Conditioner.** Most Ford Torinos built today are equipped with this popular option. Enjoy cool, comfortable air inside in any weather. Adds pleasure to your driving, adds more worth to your Torino at trade-in. **Automatic Temp Control.** An additional option that makes your SelectAir Conditioner work just like a home thermostat. Turns on the cool or heat automatically at whatever temperature you desire.

**Fingertip Speed Control.** Ideal for open highway driving. Maintains selected speed above 30 mph without your foot on the accelerator pedal. Just press steering wheel button to engage, press brake pedal or steering wheel button to disengage. Driving's more restful, steady speeds give better fuel economy. Includes Luxury 2-Spoke Steering Wheel.

**Luxury Steering Wheel.** Includes attractive woodtone appliques.

**Tilt Steering Wheel.** 5-position adjustability for easier entry, exit and more comfortable driving.

**Leather Wrapped Steering Wheel.** Favored by those who like sporty looks and a sporty feel.



**Electric Rear Window Defroster.** Melts ice and snow, helps keep rear window dry.

**Tinted Glass.** Cuts down glare on bright days, makes driving more comfortable. Comes on all windows. Recommended with air conditioning.

**Fuel Sentry Vacuum Gauge.** Another better idea to help you improve your driving habits and reduce fuel consumption. Gauge needle alerts you when low engine vacuum is robbing fuel, indicates when gas mileage is "good" or "poor." **Fuel Monitor Warning Light** also available. Uses light instead of gauge.

**Opera Windows** (2-Door Hardtop). Add style and visibility. Require vinyl roof. Standard on Brougham 2-Door Hardtop.

**Vinyl Insert Bodyside Moldings.** Add looks and protect body finish, includes Black vinyl insert on 2- and 4-Door models, Brown on Squire models. Wide color-keyed molding standard on Brougham models.

**Fender Skirts.** They make your good-looking Torino look even better. Available on selected models.

**Appearance Protection Group.** Adds style and protection. Includes door edge guards, front color-keyed floor mats and bright license plate frames. Door edge guards not included on Squire model.

**Anti-theft Alarm System.** A major deterrent to car thieves. Automatically sounds horn when doors, hood or trunk lid are tampered with. Includes locks for spare tire and hood release.

**Security Lock Group.** Includes lockable inside hood release, spare tire lock and locking gas cap.

**Electric Power Door Locks.** A great convenience and added security. Master control button locks or unlocks both front and rear doors. Includes power tailgate lock on wagons.

**Power Side Windows.** Fingertip control. All four windows on 4-Door models, front windows only on 2-Door models. Power tailgate window also available on station wagons (standard on Squire Wagon).

**Accent Group.** Inexpensive dress-up group that includes fender peak paint stripe and bright wheel lip moldings. Available on Torino Series Hardtops only.

**Dual Paint Stripes.** An attractive styling touch to Hardtop models. Standard on Gran Torino Sport model.

**Light Group.** Includes lights for ash tray, glove compartment, engine compartment and trunk or cargo area on wagons; also includes dual beam map light, instrument panel courtesy light, rear door courtesy light switches on 4-Door models, headlights "lights on" warning buzzer, headlight switch illumination and parking brake warning light. ▶

**Illuminated Visor Vanity Mirror.** Added luxury and convenience for the lady.



## SPECIAL WAGON OPTIONS:

**Squire Brougham Option.** Includes deluxe wheel covers, stand-up hood ornament, split bench front seat, Super-soft vinyl seat and door trim, electric clock and 22-oz. cut-pile carpeting. Available Squire model only.

- Deluxe Luggage Rack (adjustable)
- Power Tailgate Window (standard Squire model)
- Rear Facing Third Seat (Gran Torino & Squire only)

**OTHER TORINO OPTIONS AVAILABLE:** 3.25 to 1 Axle Ratio • Traction-Lok Differential Axle • Electric Clock • Console (Gran Torino Sport) • Luggage Compartment trim • Heavy-Duty Handling Suspension • Pleated Vinyl Bench Seat Trim • Trailer Towing Packages

Ask your Ford Dealer for model availability and complete details.

Gran Torino 2-Door Hardtop in optional Silver Blue Glow (Code 3M).



**(A) Full Wheel Covers.** Bright stainless steel with ribbed center design. Available Torino and Gran Torino models. Standard on Squire.

**(B) Deluxe Wheel Covers.** Features slotted design. Standard on Brougham and on Squire with Brougham Option.

**(C) Luxury Wheel Covers.** Rich, jewel-like web effect creates mood of motion.

**(D) Magnum 500 Wheels/Trim Rings.** Tough, strong, corrosion resistant. Available all models but wagons or those with fender skirt option.

**Deluxe Bumper Group.** Front and rear bumper guards with rubber inserts, plus full-width rub strips running horizontally on both front and rear bumpers. **Front Bumper Guards or Rear Bumper Guards** also available as individual options.

**Tires.** All 1975 Torinos are available with a selection of optional tires. Choose from several sizes in black sidewall or white sidewall. Ask your Ford Dealer for details.

## NOTABLE STANDARD FEATURES

**TORINO: Functional**—351 CID 2V V-8 with solid state ignition  
 SelectShift Cruise-O-Matic transmission  Power steering  
 Power front disc brakes  Steel-belted radial ply 14" BSW tires  
 Heater/defroster  DirectAire Ventilation  Inside hood release  
 Wiper-mounted windshield washers  All Ford Lifeguard Design Safety Features, including side door beams and protective bumper system, and others. **Appearance & Comfort**—Full-width bench seat  Tooled all-vinyl trim  Color-keyed 12-oz. cut-pile carpeting  Trunk mat  Bright belt, drip and quarter window moldings  Hub caps  Distinctive "Torino" identification.

**GRAN TORINO:** All features listed above with these differences or additions. **Appearance & Comfort**—Cloth and vinyl trim  Bright rocker panel and rear fender rocker extension moldings  Wheel lip moldings  Paint-filled lower back panel molding  Distinctive "Gran Torino" ornamentation.

**GRAN TORINO SPORT:** All features listed above for Gran Torino with these differences or additions: **Functional**—Unique 8-pod instrument panel with: tachometer, trip odometer, oil, ampere, temperature and fuel gauges. **Appearance & Comfort**—Individual bucket seats (flight bench seat with fold-down armrest available at no cost)  Super-soft all-vinyl trim  Unique door trim  Bright pedal trim  Automatic seat back release  Deluxe color-keyed seat belts  Wide bright belt molding  Front and rear fender rocker extension moldings  Dual, remote-controlled color-keyed mirrors  Dual paint stripes  Unique "Turbine" wheel covers  White sidewall tires  Unique "Sport" ornamentation on grille, fuel door and roof quarter (front fender w/optional opera window).

**GRAN TORINO BROUGHAM:** All features listed above for Gran Torino with these differences or additions: **Appearance & Comfort**—Split bench seat with dual fold-down armrests  Choice of Westminster cloth and vinyl or Super-soft all-vinyl trim  22-oz. cut-pile carpeting  Unique door trim  Bright pedal trim  Deluxe color-keyed belts  Vinyl roof  Opera window (2-door only)  Wide protective bodyside molding with vinyl insert color-keyed to roof  Wide bright belt  Front and rear fender rocker extension moldings  Unique red lens applique on lower back panel  Deluxe wheel covers  White sidewall tires  Hood ornament  Unique "Brougham" ornamentation on rear roof quarter and lower back panel.

**TORINO WAGON:** All features listed above for Torino with these differences or additions: **Functional**—3-Way Doorgate with manual window  Fold-down 2nd seat  Lockable below deck stowage. **Appearance & Comfort**—Removable cargo floor carpet  Bright tailgate window molding.

**GRAN TORINO WAGON:** All features listed above for Torino Wagon with these differences or additions: **Appearance & Comfort**—Pleated all-vinyl trim  Bright rocker panel moldings, with rear quarter extension  Bright wheel lip moldings  Distinctive "Gran Torino" identification.

**GRAN TORINO SQUIRE WAGON:** All features listed above for Gran Torino Wagon with these differences or additions: **Functional**—Power tailgate window. **Appearance & Comfort**—Bright pedal trim  Deluxe color-keyed belts  Woodtone accents on steering wheel, instrument panel and door trim panels  Woodgrain vinyl bodyside and doorgate paneling  Wheel covers  White sidewall tires  Distinctive "Squire" ornamentation on fender.

## MEASUREMENTS

	2-DOOR	4-DOOR	WAGONS
Wheelbase .....	114"	118"	118"
Length .....	213.6"	217.6"	222.6"
Height .....	52.5"	53.2"	54.8"
Width .....	79.3"	79.3"	79.0"—Torino & GT 79.9"—Sq.
Front Tread .....	63.4"	63.4"	63.4"
Rear Tread .....	63.2"	63.2"	63.2"
Trunk or Cargo Volume† (cu. ft.) ..	16.5	16.5	84.9 <sup>a</sup>
Fuel Capacity (gal.)	26.5 <sup>b</sup>	26.5 <sup>b</sup>	21.2 <sup>b</sup>
Passenger Capacity .....	6 <sup>c</sup>	6	6 <sup>d</sup>
Curb Weight (lb.) ..	4185—Torino 4195—G. Tor. 4242—Sport 4285—Brougham	4257—Torino 4288—G. Tor. 4361—Brougham	4576—Torino 4619—G. Tor. 4644—Squire

†Usable luggage capacity for Hardtops, cargo volume index for wagons

<sup>a</sup>Plus 8.2 cu. ft. of lockable below deck stowage

<sup>b</sup>Unleaded fuel

<sup>c</sup>Five with bucket-seat Sport model

<sup>d</sup>Eight with optional Rear Facing Third Seat in Gran Torino & Squire

## What to look for in a mid-size car like Torino

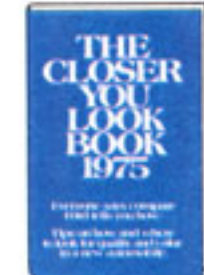
### Total cost of ownership.

When you buy a new car today, it's important to be sure you're getting your money's worth. But "money's worth" means more than purchase price. It means the total cost of owning a car, which involves three basic considerations:

1) purchase price, 2) operating economy, and 3) trade-in value. See page 2 of this catalog and find out more facts about Torino's total cost of ownership. Ford says look at not only the car, but also the total cost of owning a car.

### Features that let you drive in confidence.

Torino is built with the same type Ford Lifeguard Design Safety Features found in our larger cars like the Ford LTD, including side door beams, protective bumper system, and others. The Tot-Guard Seat and Infant Safety Carrier shown here are the latest safety items available from your Ford Dealer. Ask about them. We care about you and those you care about.



### Quality.

Ford takes quality very seriously. We want you to check the care taken to give you quality fit and finish of body seams, doors and trim. Uniformly lustrous paint. Snug, flat carpeting. And we urge you to test-drive Torino's quiet ride, comfort and handling—signs of excellence you have to experience.

You'll find these and other tests of quality in a free "Closer You Look Book," you can pick up at your Ford Dealer's.

### Satisfaction after the sale.

In addition to basic Torino Quality, we know you need a good service system to take care of anything that may come up. That's why our goal is: No unhappy owners. We back it up with a network of nearly 6,000 Ford Dealers. Each one invites you to test-drive a new Ford Torino at your earliest convenience.

### NOTES:

Replacement Parts. Your 1975 Torino comes with factory engineered Motorcraft battery, oil filter, shock absorbers, Autolite Powertip Spark Plugs and other Ford approved precision parts. For continued top performance, be sure to specify Motorcraft Parts and Autolite Powertip Spark Plugs whenever replacement is necessary.

For your convenience, Torino colors and interior trims are coded. Example: Dark Red (Code 2M). Your Ford Dealer will be pleased to show you actual color chips and sample swatches of vinyl roof and interior trim colors.

Illustrations and information presented were correct when approved for printing. Ford Division reserves the right to discontinue or change at any time, specifications or design without incurring obligation.

Some features shown or described are optional at extra cost. Most options are offered on all models. Some options are required in combination with other options. Availability of some models and features described may be subject to a slight delay. Always consult your Ford Dealer for the latest, most complete information on models, features, prices and availability.

The engine in your car is designed to operate on UNLEADED FUEL ONLY (cars sold in the U.S.A.). Leaded fuel can damage the catalytic converter and affect other emission control components.

The closer you look, the better we look.

FORD TORINO

FORD DIVISION

