

1973 Chrysler-Plymouth



Cricket/Duster/Valiant/Scamp/Barracuda/Satellite/Road Runner/Fury/Station Wagons/Chrysler/Imperial

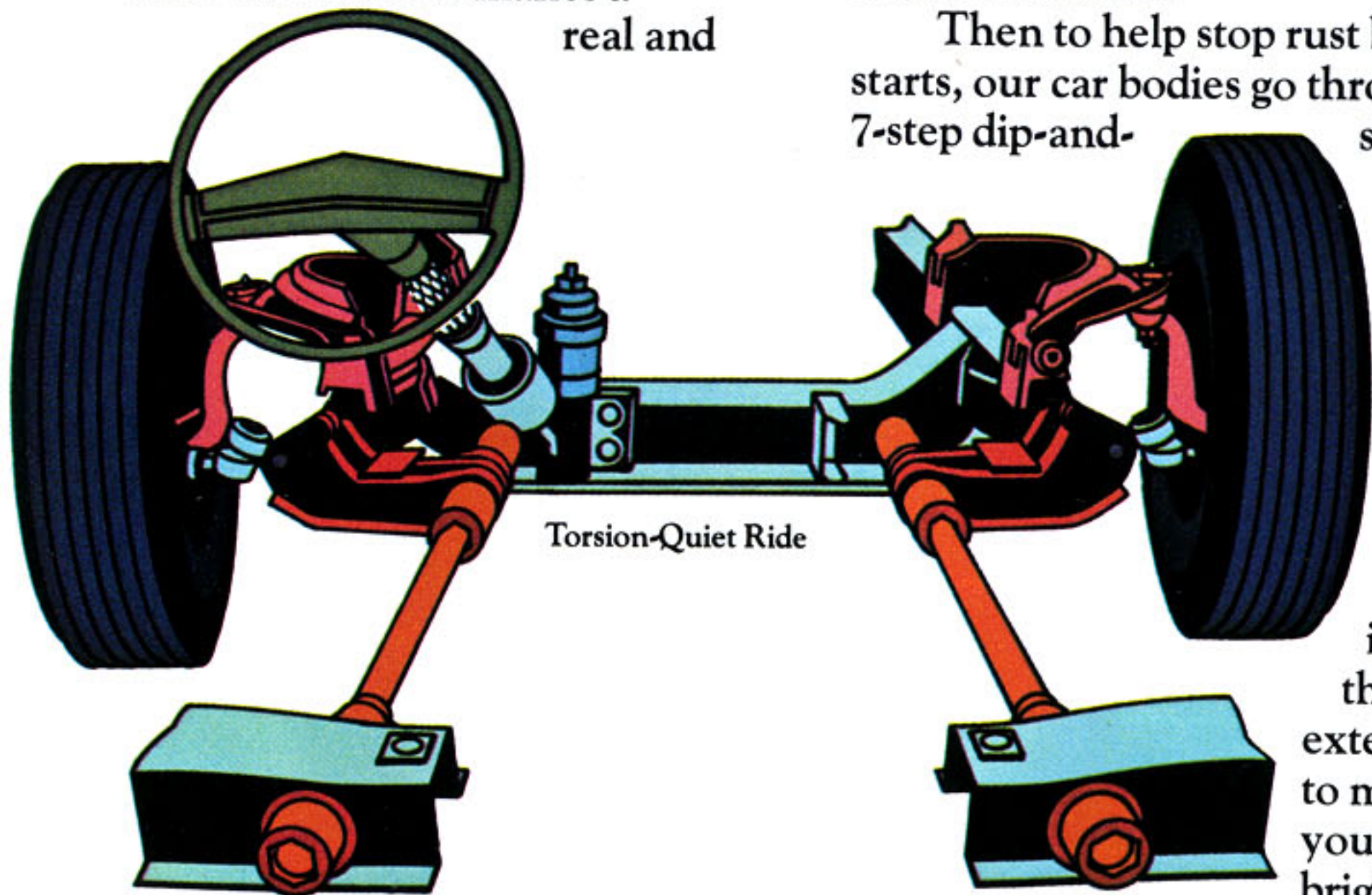
Extra Care In Engineering...It Makes A Difference.

| Table of Contents | Pages |
|----------------------------------|-------|
| Cricket | 4-5 |
| Duster/Valiant/Scamp. | 6-9 |
| Barracuda. | 10-11 |
| Satellite. | 12-15 |
| Road Runner | 16-17 |
| Fury | 18-21 |
| Plymouth Wagons | 22-25 |
| Chrysler | 26-31 |
| Chrysler Imperial. | 32-33 |
| Engines/Features/Colors. | 34-35 |

When we talk about our extra care in engineering making a difference, we are referring to things like our front torsion-bar suspension.

You'll find it on every automobile Chrysler Corporation builds in North America.

And we believe it makes a real and



Torsion-Quiet Ride

important difference in how our cars ride and handle.

Torsion bars twist to help absorb road shock and to smooth out a bumpy road. And, in conjunction with other front-end components, they resist front-end "dip" when braking. To reduce "squat" when the car is being accelerated, they are combined with multi-leaf rear springs, with the rear axle mounted ahead of the spring center.

Then there's unitized construction.

You can't unbolt a Chrysler Corporation product from its frame since every car is built the unibody way.

Our engineers believe that the thousands of welds we use make the car body tough and strong and help eliminate rattles.

Then to help stop rust before it starts, our car bodies go through the 7-step dip-and-spray

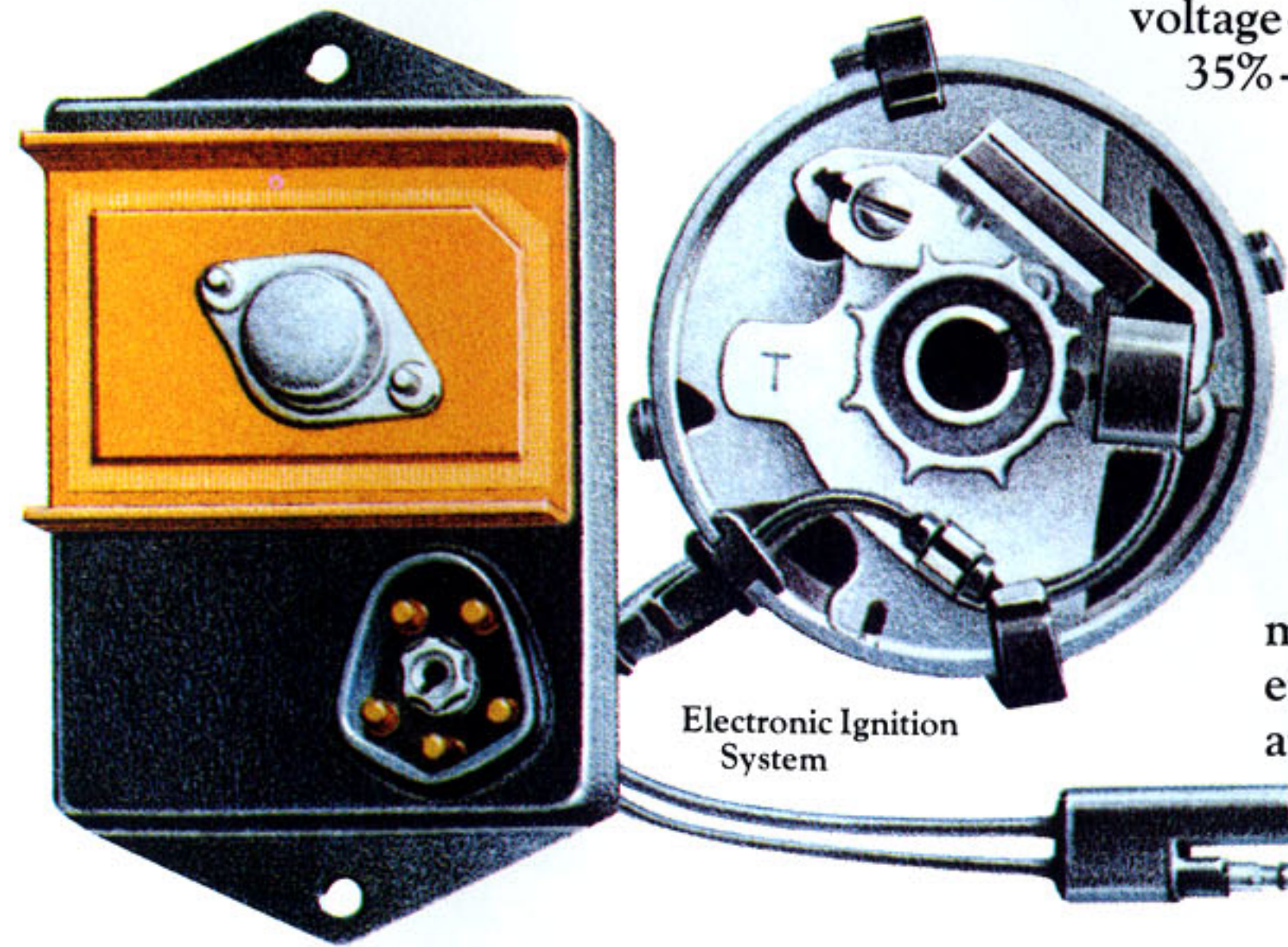
process.

After that our new acrylic dispersion enamel is used for the body exterior coat to make sure your car stays bright and

shiny for a long time to come.

When the Sound Isolation System is added to front torsion-bar suspension and unibody construction, the result is a quiet, controlled riding experience —Torsion-Quiet Ride.

Every new Chrysler, Plymouth



Electronic Ignition System

Fury, and now, Satellite has Torsion-Quiet Ride. In fact, through new sound-reducing features, we've managed to make these cars the quietest ever offered by Chrysler-Plymouth.

Another important feature, now standard on all Chrysler Corporation cars built in North America, is the Electronic Ignition System.

Compared to conventional ignition systems, our system is much more reliable and consistent.

For example, there are no points

or condenser to wear out. That means there are none to replace...so you may never have to worry about periodic ignition tune-ups. Your original engine timing should be good for 50,000 miles or more.

You also get a uniformly higher voltage—by as much as 35%—for more

dependable starts in cold (even in below zero temperatures) and damp weather.

Electronic ignition also helps eliminate many of the major causes of an engine misfiring and so reduces

engine emissions caused by a weak spark.

Excluding routine spark plug service, the Electronic Ignition System is virtually maintenance free.

To also help you get a better start, all of our 1973 engines are equipped with an electric assist choke. This device helps shorten the period of choke operation when outside temperatures are above 63° F thus reducing emissions caused by choke enrichment during engine starting and warmup.

Throughout the years, Chrysler Corporation has been vitally

interested in environmental protection. Our Cleaner Air System, a highly integrated emission control

that is capable of impacting a fixed barrier at 5 mph in the front and 2-1/2 mph in the rear with no significant

setting the bumper itself out from the sheet metal by as much as two inches to provide impact protection — and a full-width reinforcement is

armed by locking either front door with the ignition-door key. Once the system is armed, it can only be turned off by using the same key.



located behind the bumper surface to provide increased beam strength during impact. There's also a bumper support structure using heavy-gauge steel with deep sections. In addition to their impact capabilities, the elastomeric bumper guards help keep your 1973 Chrysler or Plymouth from slipping over or under another car's bumper during a low-speed impact.

If someone attempts to disturb the hood, trunk, doors, or ignition, the alarm is activated.

This alarm immediately starts the headlights, taillights, and side marker lights flashing in conjunction with the horn blowing intermittently.

For your convenience, entrance to the trunk with the key is allowed without violating the system.

The optional Security Alarm System is available on all 1973 Imperial, Chrysler and Fury models.

Many of our models also offer you these options: long-lasting, steel-belted radial-ply white sidewall tires . . . vent windows . . . sporty sun roofs . . . rugged trailer-towing packages . . . enjoyable tilt & telescoping steering wheels . . . dressy road wheels . . . and much more.

Chrysler-Plymouth is coming through with 53 models. Cars in all types of price classes, sizes, and styles. All of them are built with extra care in engineering.

See what a difference it makes by buying or leasing your next car from your Chrysler-Plymouth dealer.

Extra care in engineering . . . it makes a difference.

system, has evolved over a number of years to effectively reduce the levels of automotive emissions.

Emission levels for our '73 cars are reduced about 50% for oxides of nitrogen, about 70% for carbon monoxide, and about 85% for total hydrocarbons, when compared to cars having no emission controls.

These features are available with a wide variety of engine choices. Depending on model, you can choose from the basic economy of a 198 cubic inch Six all the way up to a 440 cubic inch V-8 with 4-barrel carburetion. Transmissions include 3- and 4-speed manuals or the smooth and efficient TorqueFlite automatic.

All of our cars come equipped (either standard or optional) with the fade-resistant reliability of front disc brakes. On many of our models, power boosters are standard. And all of our big cars have standard power steering and TorqueFlite automatic transmission.

Chrysler engineers have designed an extra-protection bumper system

damage to any portion of the car.

Why do we call these bumpers "extra-protection?"

Because we've done our job in meeting or exceeding the federal government's new damage standards for low-speed accidents.

Some of the ways we accomplished this is by

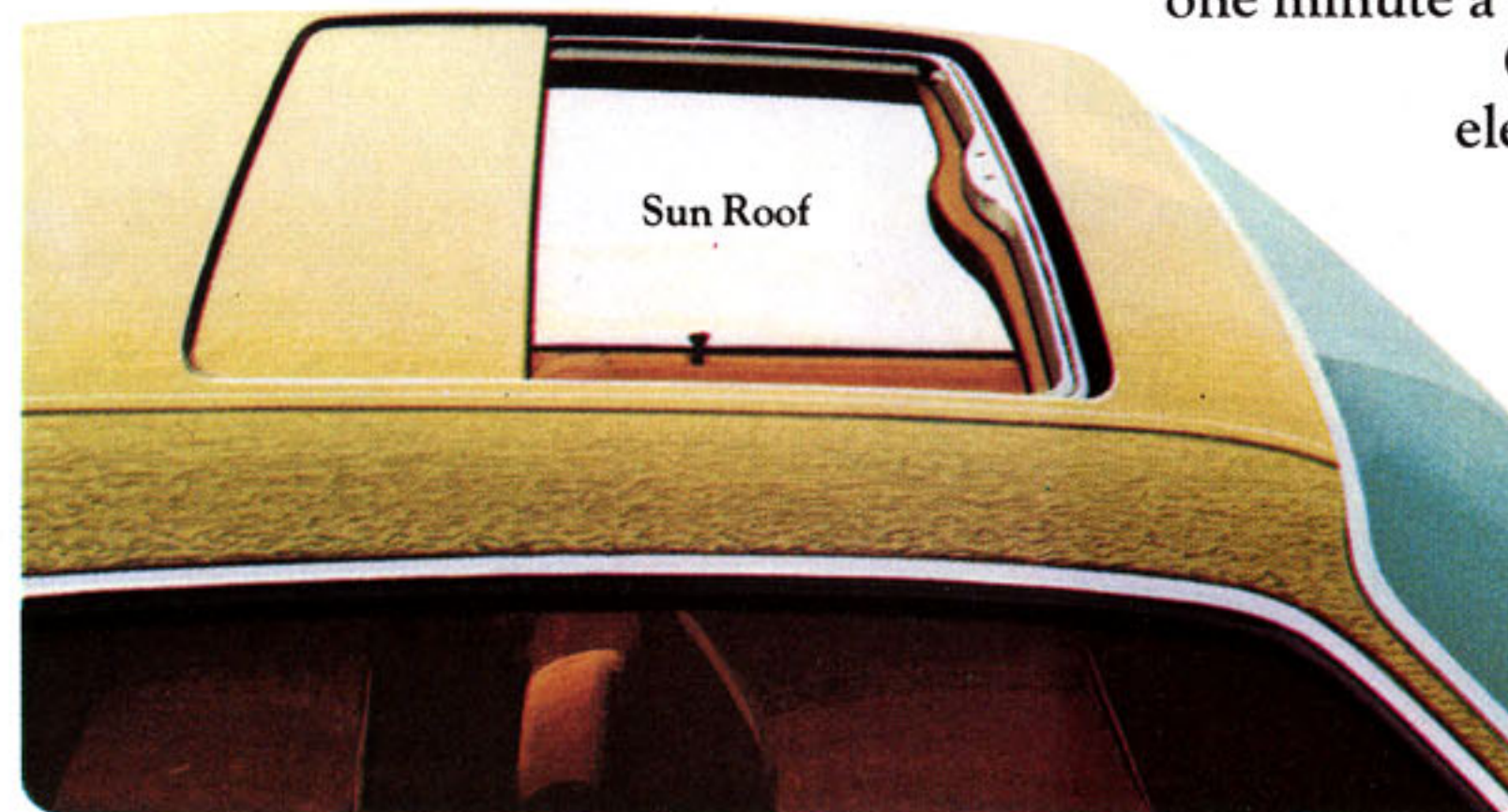


Space-age technology now brings you two new options for '73.

One is an electronic digital clock (standard on Imperial; optional on Chrysler) that provides you with a numerical readout rather than indicating time on a dial. This clock, the first of its kind for the industry, will maintain an accuracy range of plus or minus one minute a month.

Our second new electronic breakthrough is a Security Alarm System available only with optional power door locks. This system is integrated right into the car's wiring system.

The system is





Foreground: Cricket 4-Door Sedan Background: Cricket 4-Door Station Wagon



Cricket Wagon Interior

CRICKET

Plymouth's little car comes through with big value in two versions.

Take your choice of a Cricket 4-door sedan, or a Cricket 4-door station wagon. Both models give you these standard features: power front disc brakes, rack-and-pinion steering, unibody construction, front bucket seats, four-on-the-floor, fully synchronized transmission and child-guard door locks on the rear doors to prevent accidental openings.

Our Cricket wagon has many features you'd expect only in big expensive wagons. Take a look in the back and you'll see our plush rear cargo area has been carpeted over the load floor and up the sides of the cargo area. A tailgate which opens via hidden hinges that won't get in the way of people or loads. And thanks to a rear seat that folds into two positions, plenty of space. With the rear seat folded flat and the front seats moved fully forward, there's over 80 inches of length. Enough room so you can use the cargo compartment as an overnight sleeper.

Options include air conditioning, 3-speed automatic transmission, AM radio, whitewall tires for both models... and a decor package for the sedan.

- Exterior Dimensions (4-Door Sedan)**
- Wheelbase... 98 in.
- Overall Length... 166.7 in.
- Overall Width... 62.5 in.
- Overall Height... 54.9 in.
- Front Track... 51.0 in.
- Rear Track... 51.3 in.



Cricket Wagon Tailgate



Air Conditioning



Four-On-The-Floor Transmission



Foreground: Duster 2-Door Coupe Background: Duster 340 2-Door Coupe



Foreground: Scamp 2-Door Hardtop Background: Valiant 4-Door Sedan

Extra care in engineering
... it makes a difference.



Scamp Interior

DUSTER/VALIANT/SCAMP
Choosing a Valiant, Duster, or Scamp means you like the compact feel and handling, yet don't want to give up style and comfort.

The short wheelbase, front torsion-bar suspension and compact body of our Valiant, Duster, and Scamp models insure responsive roadability and parking ease, while unibody construction makes these cars tough and strong.

The standard Duster and the sleek Duster 340 are nimble in traffic...solid on the expressway...and practical for the city.

Valiant, the 13-year veteran of the compact field, is another name for value. Economical to buy. Economical to own.

Scamp, our lowest priced 2-door hardtop, has a little longer wheelbase than the other Valiants, and carries its own styling with dash and flair.

All of these cars feature our extra-protection bumper system, the Electronic Ignition System and an electric assist choke for a better start.

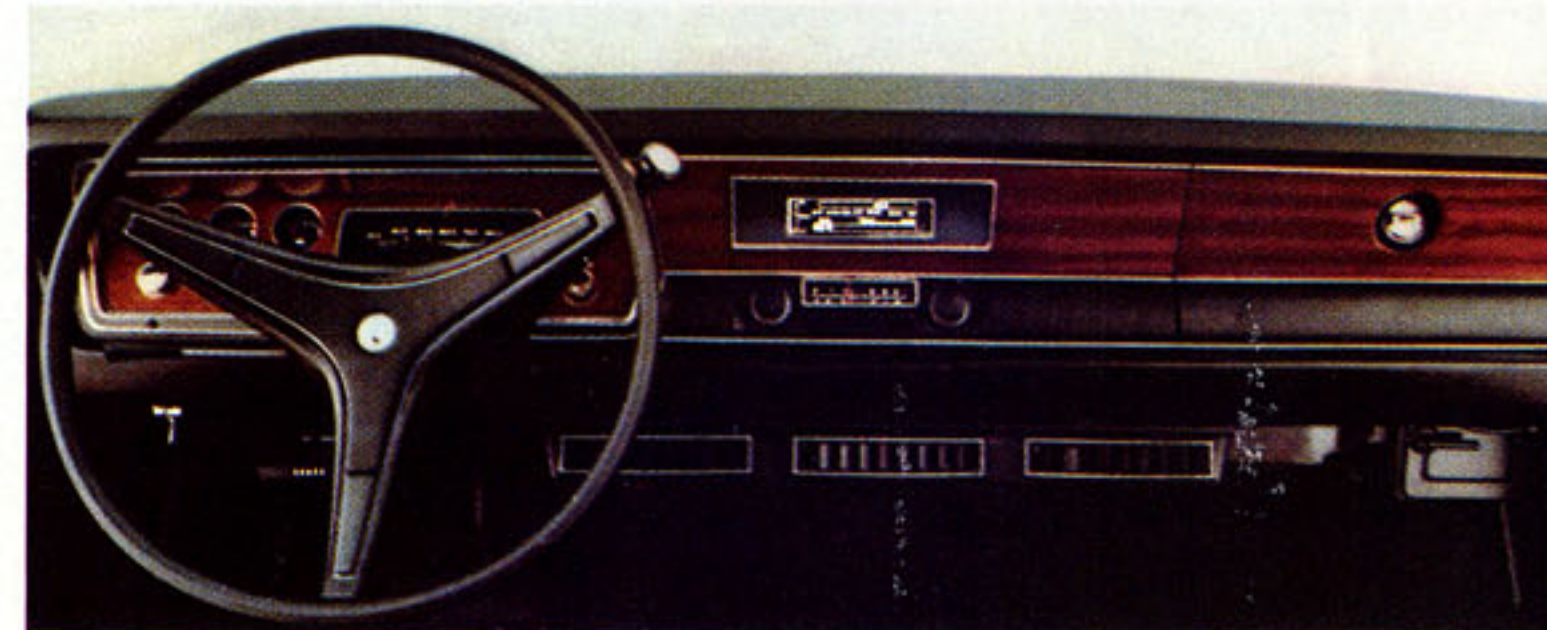
Nice things can be added to your Duster like the sporty Twister Package, electric rear-window defroster and the new Spacemaker Pak that converts the Duster from a five-passenger coupe to a mini-wagon in seconds. This gives you a big 50 cubic-



Duster Interior



Electric Rear Window Defroster



Valiant/Duster/Scamp Instrument Panel



Duster Interior

foot cargo deck (that's more room than some compact wagons offer).

All you do is fold the rear-seat-back forward, secure it behind the front and lower the security panel. Then you have a long carpeted space all the way back to the deck lid for cargo, sports gear or a playpen.

If you add an optional sun roof, you'll wind up with an open-air Space Duster.

Options for all of these cars include TorqueFlite automatic transmission, power steering, bright bumper guards, air conditioning, inside hood release and much more:

Exterior Dimensions (Valiant Sedan)

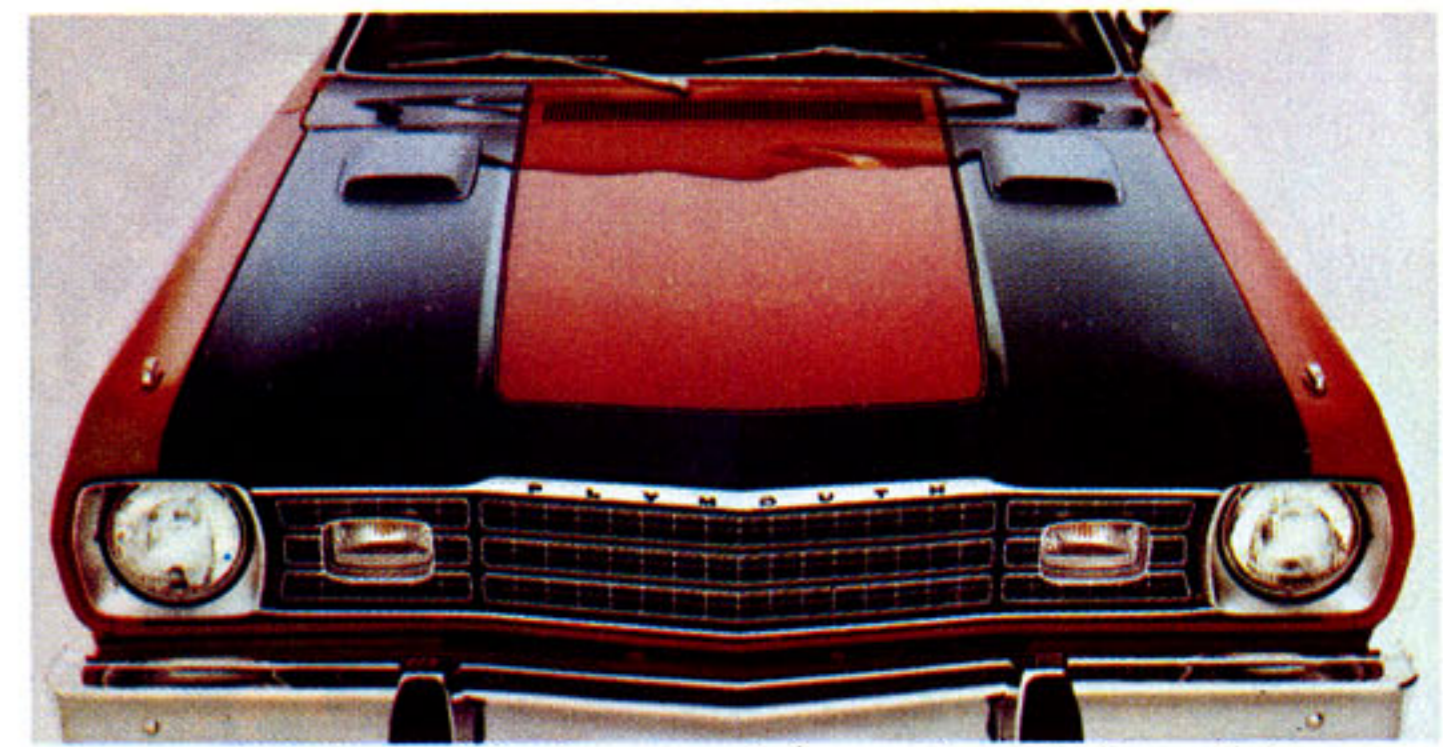
- Wheelbase . . . 108 in.
- Overall Length . . . 195.8 in.
- Overall Width . . . 71.0 in.
- Overall Height . . . 54.3 in.
- Front Track . . . 59.1 in.
- Rear Track . . . 55.6 in.

Exterior Dimensions (Scamp)

- Wheelbase . . . 111 in.
- Overall Length . . . 199.6 in.
- Overall Width . . . 71.0 in.
- Overall Height . . . 52.8 in.
- Front Track . . . 59.1 in.
- Rear Track . . . 55.6 in.

Exterior Dimensions (Duster)

- Wheelbase . . . 108 in.
- Overall Length . . . 195.8 in.
- Overall Width . . . 71.8 in.
- Overall Height . . . 53.1 in.
- Front Track . . . 59.1 in.
- Rear Track . . . 55.6 in.



Twister Package with optional Hood Scoops



Duster Spacemaker Pak



Extra-Protection Bumper System



Foreground: 'Cuda 2-Door Hardtop Background: Barracuda 2-Door Hardtop



Barracuda Interior

BARRACUDA & 'CUDA Sporty appearance and sporty performance.

Barracuda and 'Cuda both come equipped with the 318 V-8... a 340 V-8 is optional. The standard transmission is a floor-mounted, all-synchromesh, 3-speed manual. TorqueFlite automatic and four-on-the-floor transmissions are optional.

Front disc brakes, electronic ignition, unibody construction are standard on both cars — plus heavy-duty suspension system (including front and rear sway bars), F70 x 14" white sidewall tires, a performance hood and special ornamentation on 'Cuda.

Dress-up options — sporty body side tape stripes, sports decor group, rallye road wheels, Hurst shifter, chrome road wheels, vinyl roof, console — can help you personalize your car.

Just as the exterior of a Barracuda or 'Cuda is sporty, so is the interior.

The new standard Barracuda bucket seats are designed to be good looking and comfortable. Four color choices are available.

The instrument cluster is flood-lit for easy viewing and all controls are conveniently placed. In addition, you have gauges to keep you informed.

Exterior Dimensions (Barracuda)

Wheelbase . . . 108 in.
Overall Length . . . 193.0 in.
Overall Width . . . 75.6 in.
Overall Height . . . 50.9 in.
Front Track . . . 60.2 in.
Rear Track . . . 60.7 in.



Hurst Shifter



Rallye Road Wheels 11



Foreground and Background: Satellite Sebring-Plus



Foreground: Satellite Custom 4-Door Sedan Background: Satellite 4-Door Sedan

Extra care in engineering
... it makes a difference.

SATELLITE
Perhaps the best way to describe the 1973 Satellites is to say they are built to be seen . . . not heard.

The reason for our new quiet is Chrysler's renowned Torsion-Quiet Ride. A unique combination of front torsion-bar suspension, unibody construction, and sound isolators for a quiet, controlled ride.

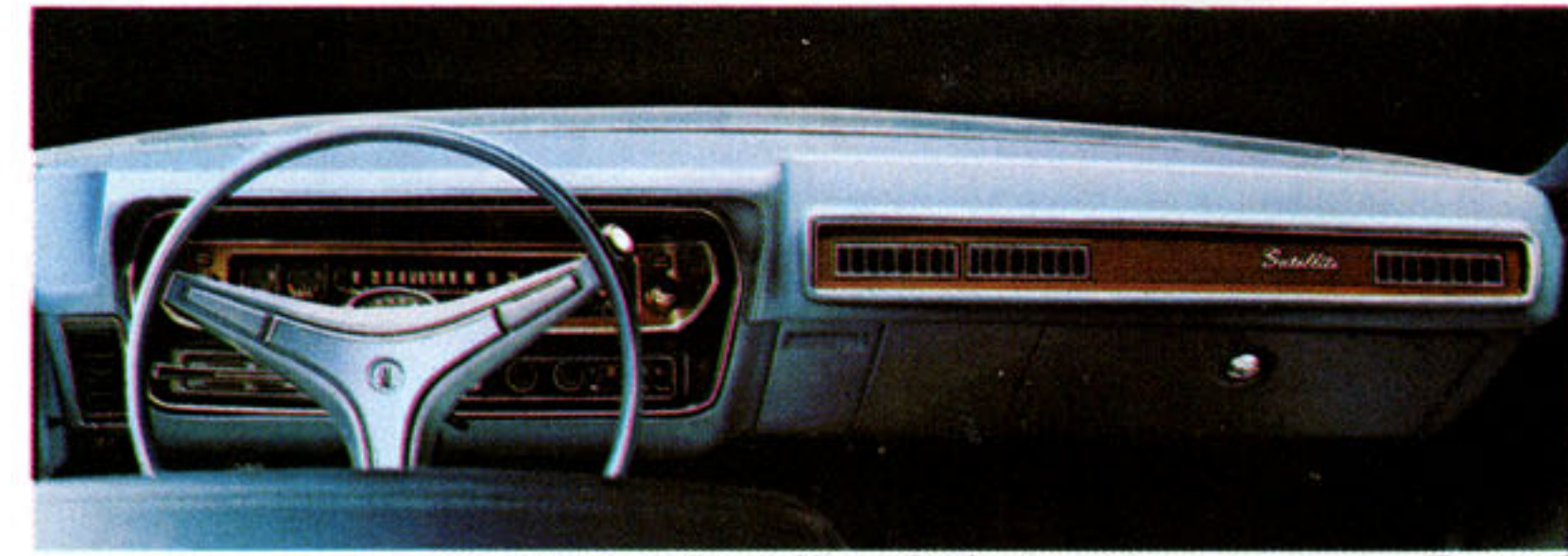
For 1973, both the front and the rear suspensions on all Satellites are isolated.

The front suspension, a new design, utilizes an isolated cross member separated from the body by six rubber isolators.

Up front, torsion bars twist to soften road shock and smooth out bumpy roads.

And rubber surrounds the rear-leaf spring clamps to reduce vibration, road harshness and noise.

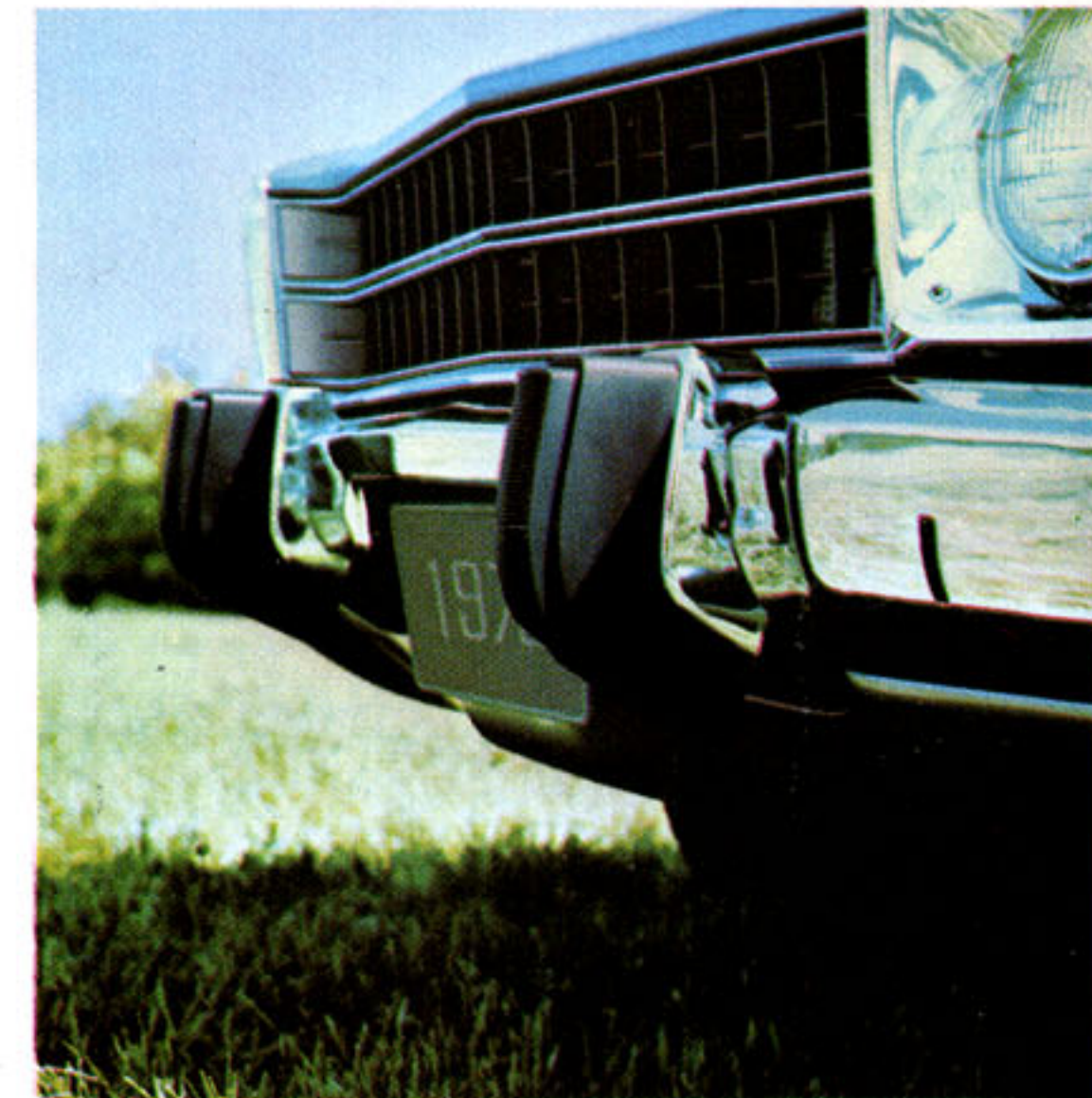
Every new Satellite has Torsion-Quiet Ride. And the Sebring-Plus has even more sound-reducing features. It's one of our "Super-Quiet" cars for '73. Included are sound deadeners and silencers in the floor, luggage compartment, door trim panels, steering column, rear wheel-



Satellite Sebring Instrument Panel



Vinyl Roof



Bright Bumper Guards



Satellite Sebring-Plus Interior



Satellite Custom Interior (Also available on Satellite Sebring)

housings and rear shelf panel plus a new resonator in the exhaust system.

These additions will make this year's Satellite Sebring-Plus the quietest mid-size car ever offered by Chrysler-Plymouth.

The "seen" part is obvious. Though it's a family car in every respect, the contemporary look is anything but dull. All Satellite 2-door models have been restyled in a fresh, tasteful look that's unique among intermediate cars.

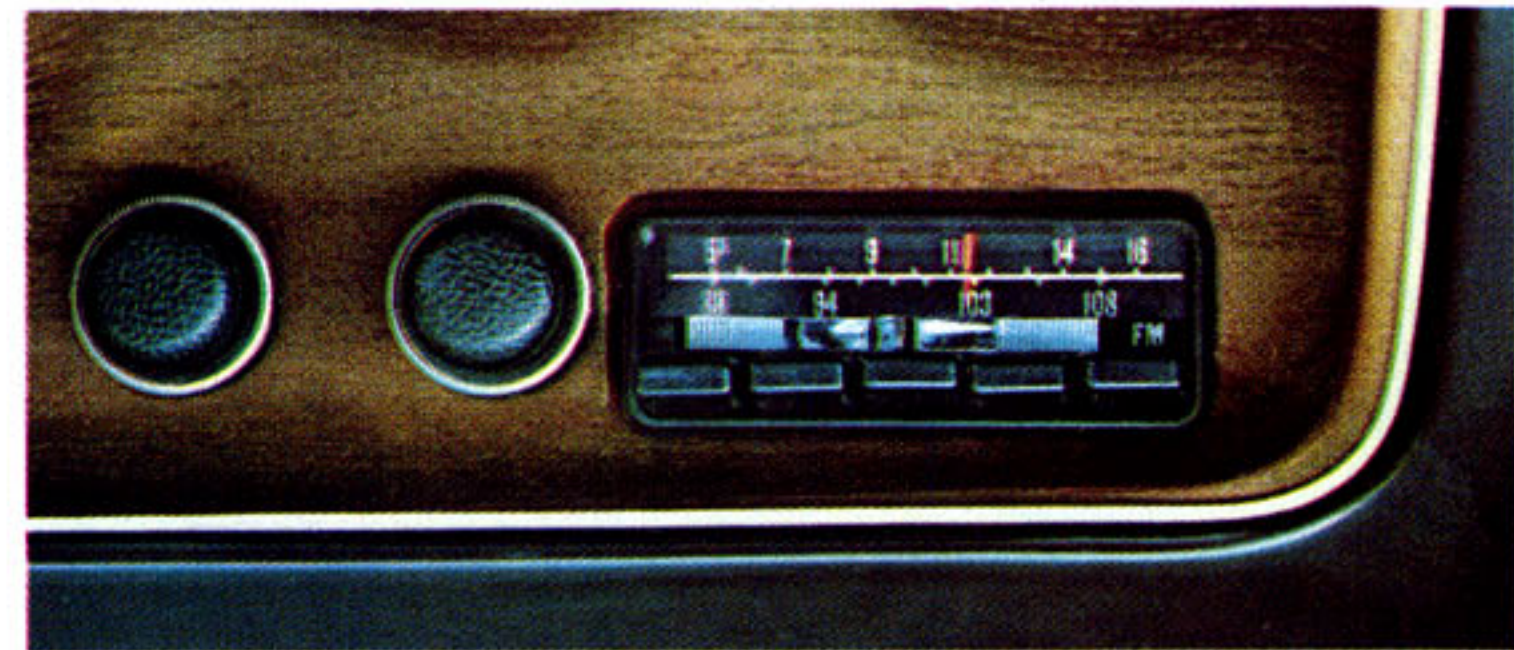
Even our Satellite sedans and hardtops are distinctly different in style. We've designed these models individually to keep their best proportions intact—with no compromising. Sedan buyers and hardtop buyers can each have a car just right for their particular needs. We feel that two different body types deserve two different kinds of design and styling.

We've also spent a lot of time and money making the inside of our Satellites as well-styled as the outside. They are comfortable—with room enough for six.

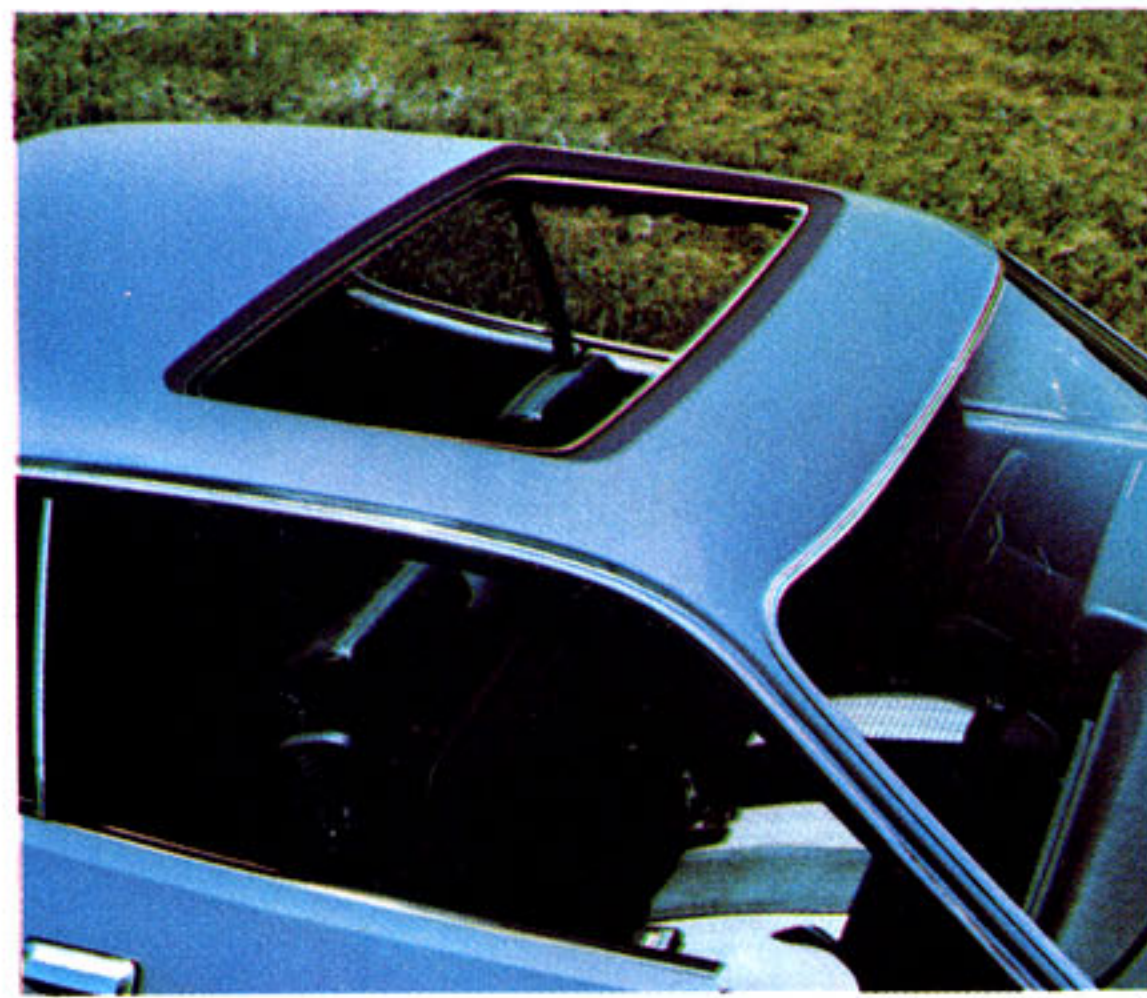
Options include air conditioning, vinyl roof, bright bumper guards, AM/FM monaural or AM/FM stereo radio, and a sun roof. This modestly priced, factory-installed, sliding metal sun roof is manually operated and is available on all 2-door models.

Exterior Dimensions (Satellite V-8 Sedan)
 Wheelbase . . . 117 in.
 Overall Length . . . 213.3 in.
 Overall Width . . . 78.6 in.
 Overall Height . . . 53.7 in.
 Front Track . . . 61.9 in.
 Rear Track . . . 62.0 in.

Exterior Dimensions (Satellite V-8 Coupe & Hardtop)
 Wheelbase . . . 115 in.
 Overall Length . . . 210.8 in.
 Overall Width . . . 79.1 in.
 Overall Height . . . 52.2 in.
 Front Track . . . 61.9 in.
 Rear Track . . . 62.0 in.



AM/FM Radio



Sun Roof



Foreground and Background: Road Runner



Road Runner Interior

ROAD RUNNER

Only the strong survive.

That's been the basic philosophy behind the Road Runner since its introduction back in 1968.

In '73, basic standard equipment proves it's still a well-put-together, no-nonsense performance car.

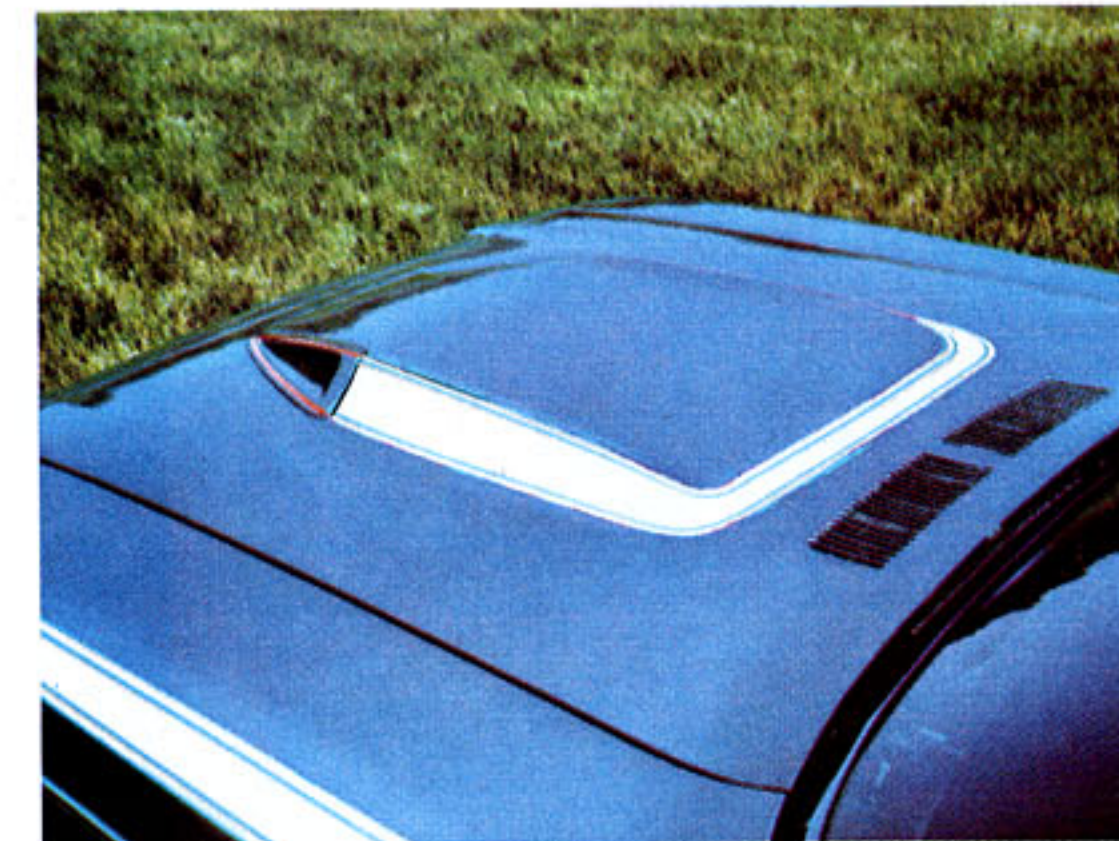
There's a 318 cu. in. V-8 with dual exhaust and bright chrome exhaust tips. Floor-mounted, all-synchromesh 3-speed manual transmission. Front and rear sway bars. Front disc brakes. F70 x 14 raised white letter tires mounted on rallye wheels. A performance hood. The Electronic Ignition System (it gives you up to 35% higher starting voltage than non-electronic systems). Unibody construction. Front torsion-bar suspension. Heavy-duty springs. Rallye instrument cluster. Special Road Runner dress-up body stripes and identification. And you still get the distinctive "Beep-Beep" horn.

Those are the basics.

If you want more bird, it's easy to build your Road Runner on up. You can add a 340, 400, or a 440 V-8, hood tape treatment, chrome-styled road wheels, racing mirrors, heavy-duty shocks, hood pins, and either our legendary TorqueFlite transmission or a 4-speed with a Hurst shifter.

Exterior Dimensions (Road Runner)

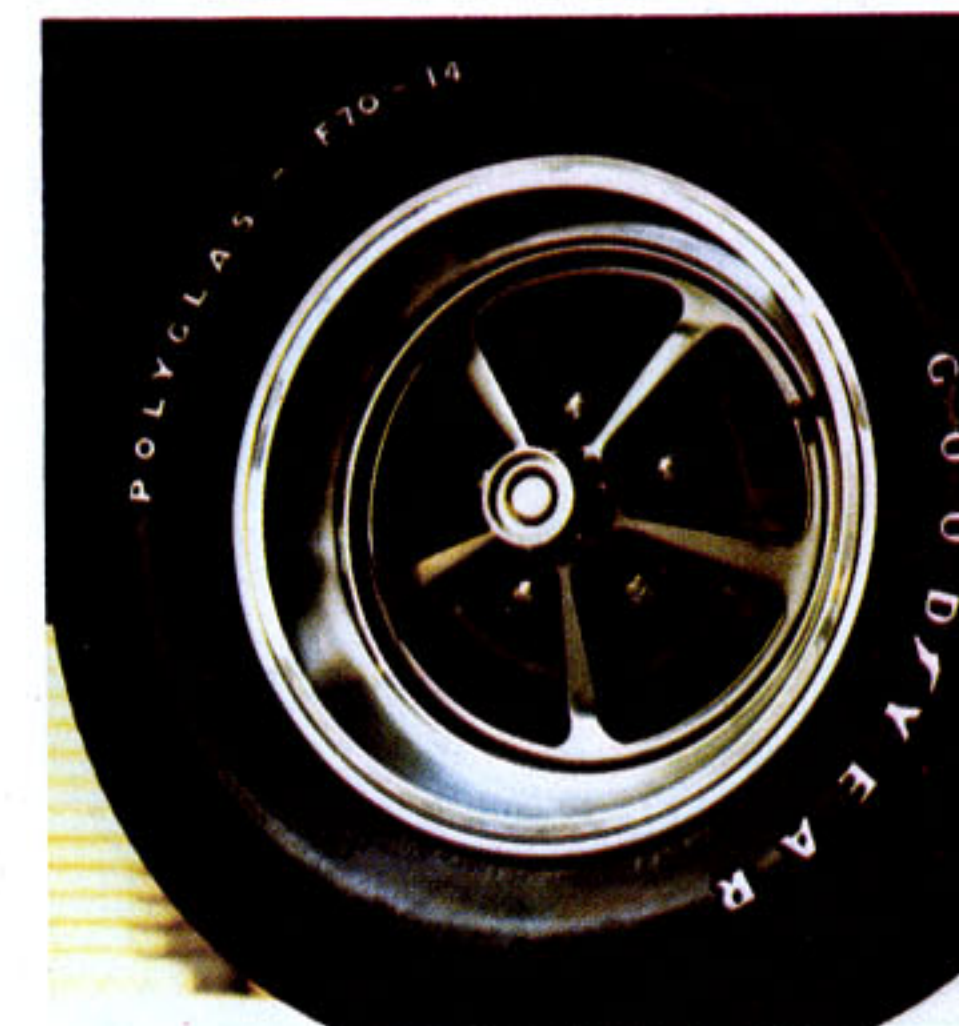
Wheelbase . . . 115 in.
Overall Length . . . 210.8 in.
Overall Width . . . 79.1 in.
Overall Height . . . 52.5 in.
Front Track . . . 61.9 in.
Rear Track . . . 62.0 in.



Hood Tape Treatment



Rallye Road Wheels



Chrome-Styled Road Wheels 17



Fury Gran Sedan



Foreground: Fury III 4-Door Hardtop Background: Fury III 2-Door Hardtop

Extra care in engineering
... it makes a difference.



Gran Coupe Interior

FURY

When you consider a Fury as your next car, the first thing that you'll notice is that luxury, comfort and convenience come standard.

For example, every Fury has Torsion-Quiet Ride, TorqueFlite automatic transmission, power steering and power front disc brakes as standard equipment.

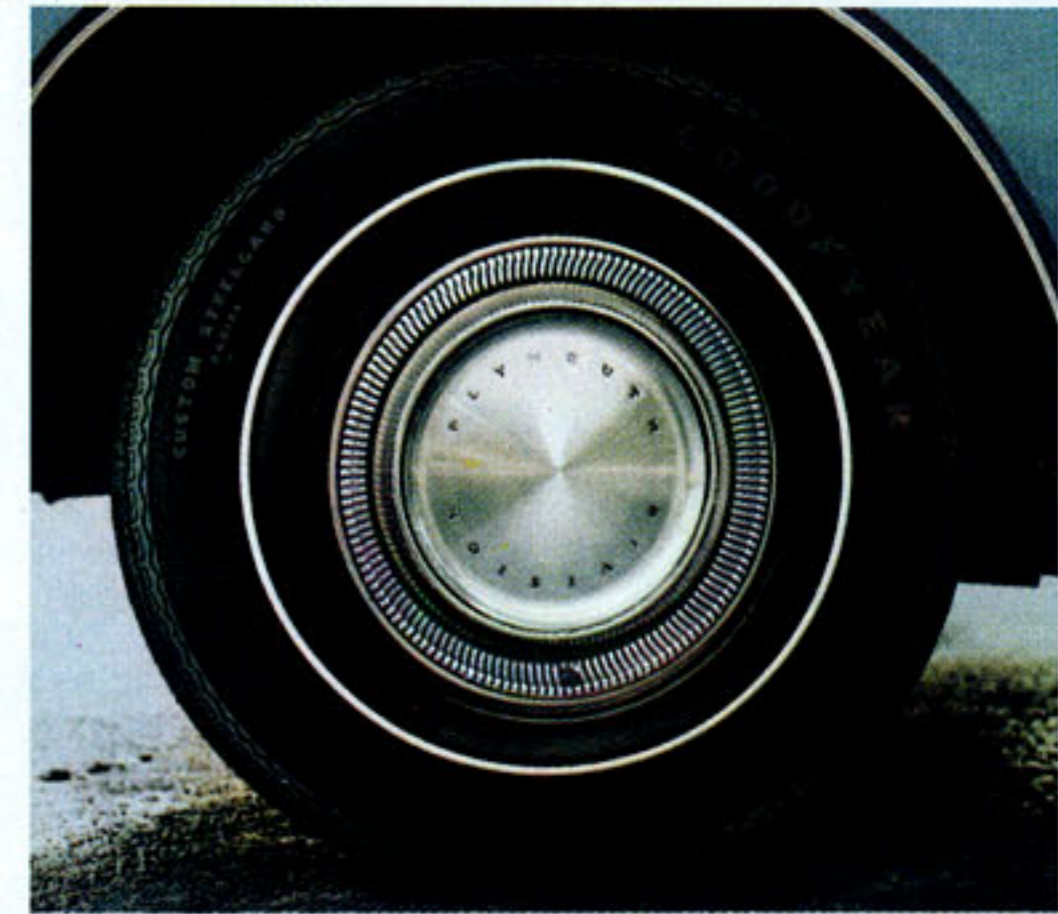
You also get an Electronic Ignition System standard. Compared to a conventional ignition system, Fury's electronic system is a hands-down winner. For example, there are no points or condenser to replace. You also get consistently higher voltage for more dependable starts in any kind of weather.

We've also tried to make you feel as comfortable in your Fury as you would feel in your own home. Take room for instance. Fury has one of the largest interiors in the industry. Besides roominess, you also get comfort. Many of our cars have armrests located in the middle of the seats, while some of our passenger seats even recline.

And all Fury Gran Coupes and Gran Sedans have a number of new silencing features incorporated into them. This is in addition to the pounds and pounds of sound-deadening material in every Fury.



Fury Gran Coupe/Sedan Instrument Panel



Steel-Belted Radial-Ply Tires



Tilt Steering Wheel



Fury III Interior

We've also done a lot to protect the car from illegal entry. All Furys have a new deck-lid lock design that offers substantially increased resistance to illegal entry.

And our Security Alarm System option, available only with optional power door locks, offers additional peace of mind.

The system is armed by locking either front door with the ignition-door key. Once the system is armed, it can only be turned off by using the same key. If someone attempts to disturb the hood, trunk, doors, or ignition, the alarm is activated. This alarm starts the headlights, taillights, and side marker lights flashing in conjunction with the horn blowing intermittently. For your convenience, entrance to the trunk with the key is allowed without violating the system.

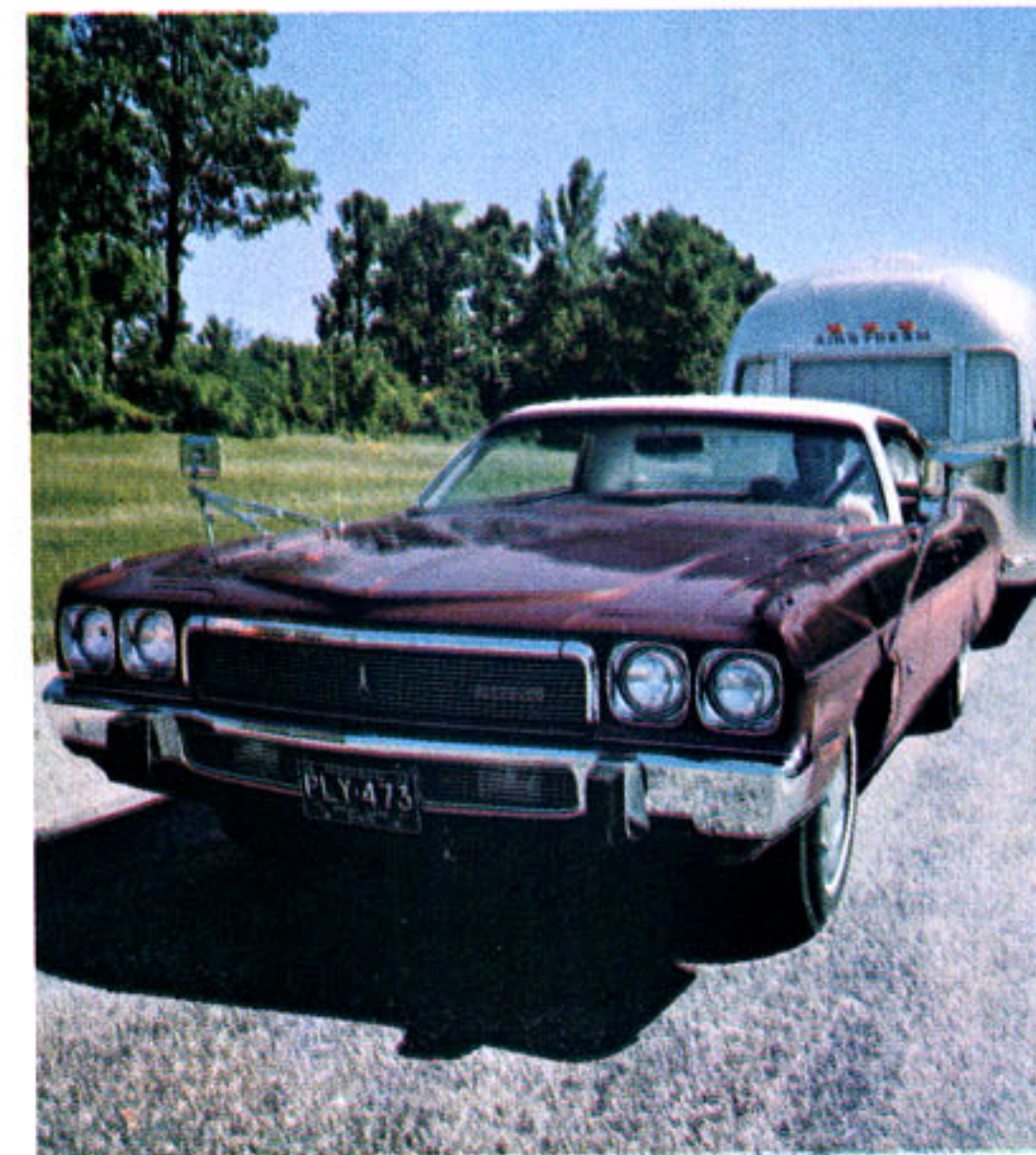
Other options include steel-belted radial-ply tires, tilt steering wheel and a trailer-towing package that lets you tow up to 7,000 pounds.

Exterior Dimensions (Fury 4-Door Sedan)

- Wheelbase... 120 in.
- Overall Length... 223.4 in.
- Overall Width... 79.8 in.
- Overall Height... 56.1 in.
- Front Track... 62.1 in.
- Rear Track... 63.4 in.



Fury III Interior



Trailer-Towing Package



Security Alarm System 21



Fury Sport Suburban



Satellite Regent Wagon

Extra care in engineering
... it makes a difference.



Fury Sport Suburban Interior

PLYMOUTH WAGONS

Six Plymouth Wagon ways to go.

The three wagons in the Fury line—Sport Suburban, Custom Suburban, and Suburban—give you big wagon convenience and comfort.

A 360 cu. in. V-8 engine... Torsion-Quiet Ride... front disc brakes... power steering... TorqueFlite automatic transmission... roof air deflector... inside hood release... three-way tailgate... and a power tailgate window are standard.

There's room in abundance—over 100 cubic feet! And all Suburban two-seaters come with an additional nine cubic foot under-the-floor storage compartment.

Inside, Fury wagons are big, roomy cars that are finished with living room comfort and decor... pleasing to the eye and the body, with convenience built in. You ride on seats that are a product of computer technology which carefully correlates spring deflection, stress level, and fatigue characteristics for maximum seating comfort. The 1973 Plymouth Fury instrument panel has easy-to-read instrumentation with conveniently placed and fully illuminated switches and controls.

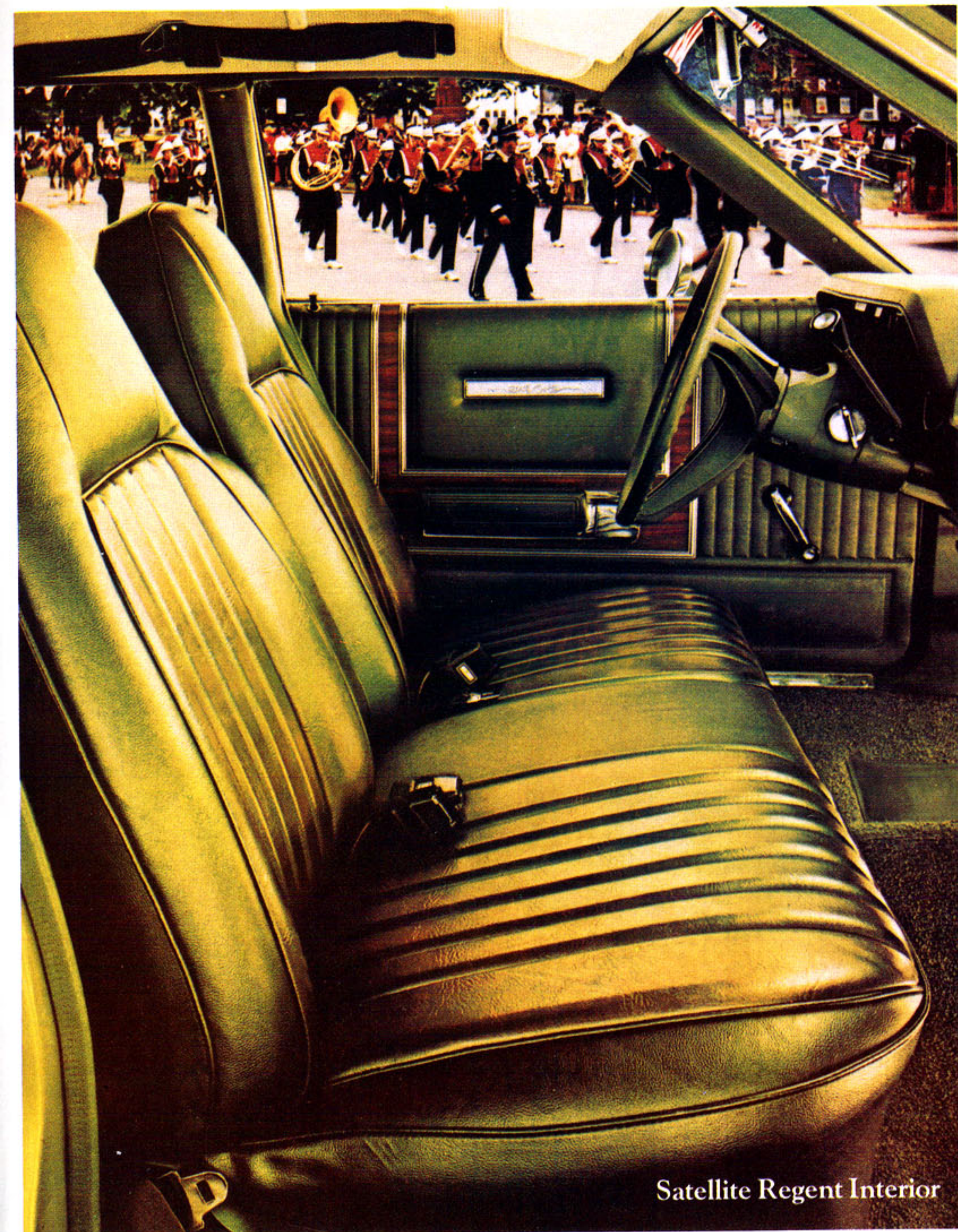
All the right reasons for owning a station wagon are also met by our '73 Satellite models.

Room... six passengers (Satellite Regent and Custom also offer an eight-passenger version) and 91 cu. ft. of cargo space.

Handling... Torsion-Quiet Ride with a new suspension system.



Fury Three-Way Tailgate



Satellite Regent Interior

Power... a big 318 cu. in. V-8 with the latest emission controls to cut pollutants on regular, low-lead or no-lead fuels.

Safety... an Auto-Lock that automatically locks the tailgate when the ignition is on (standard on 3-seat models, optional on 2-seat models), an extra-protection bumper system, and power front disc brakes.

Utility... a standard 3-way tailgate that opens either as a tailgate or as a door with the glass up or down; handy storage trays along the sides; and, tough, long-lasting all-vinyl interiors.

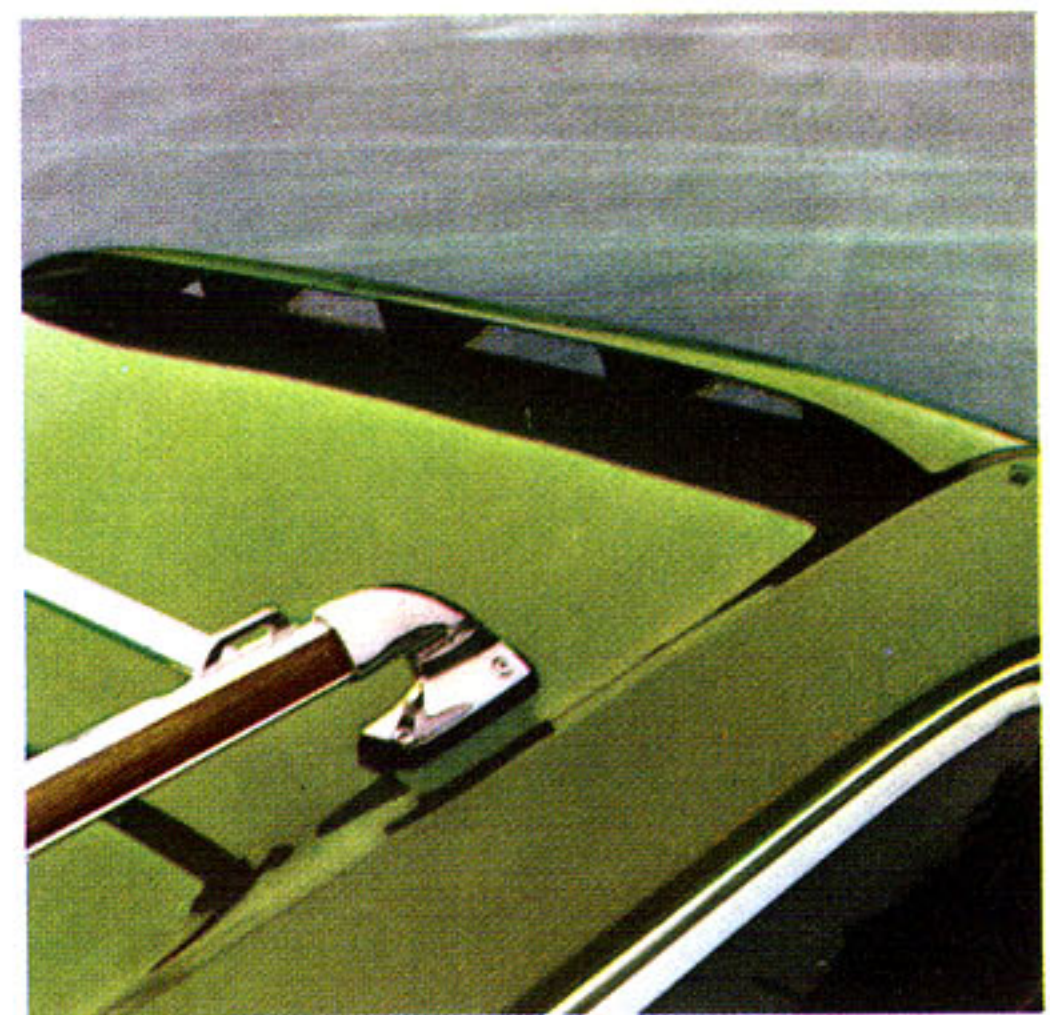
Options for both Fury and Satellite wagons include a trailer-towing package, luggage rack, power windows, and power door locks. With the Fury you can order dual air conditioning, vent windows and automatic speed control.

Exterior Dimensions (Fury Wagon)

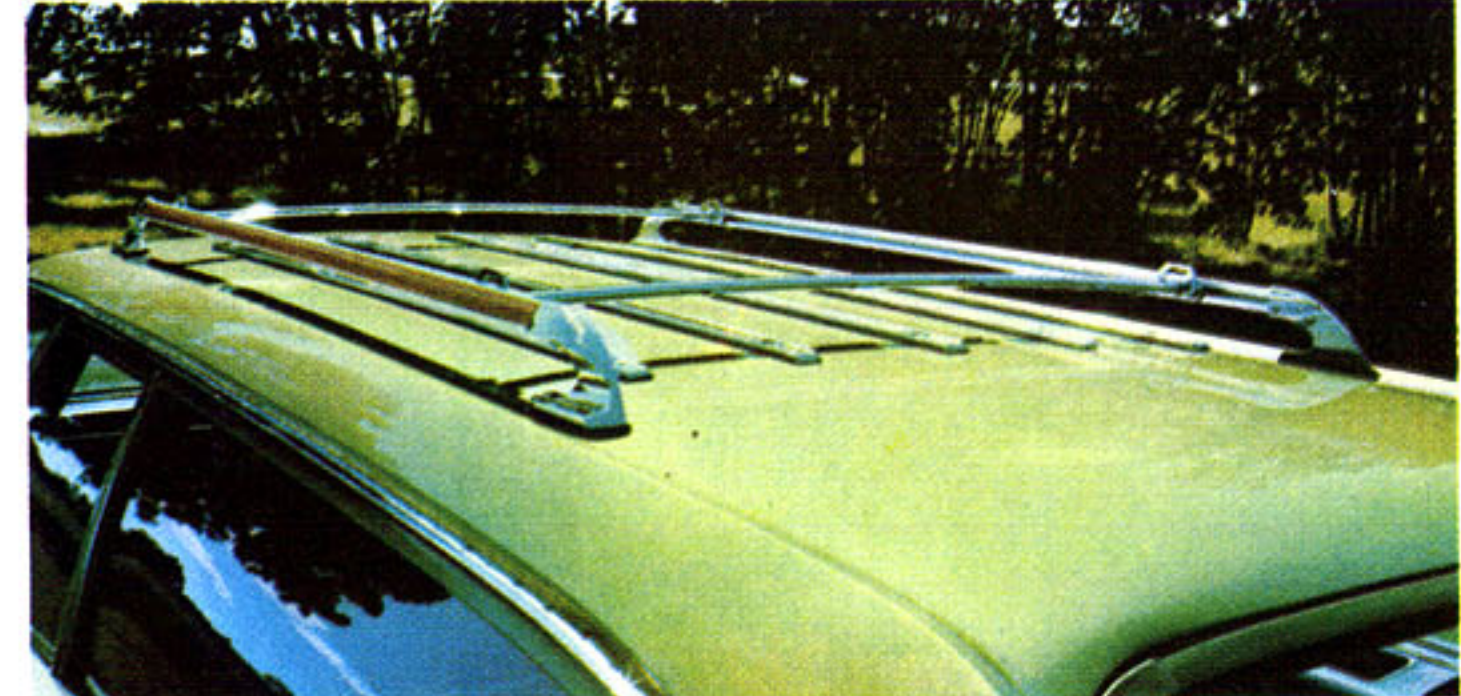
- Wheelbase... 122 in.
- Overall Length... 227.5 in.
- Overall Width... 79.8 in.
- Overall Height... 57.8 in. (2-seat models)
- Front Track... 62.1 in.
- Rear Track... 63.4 in.

Exterior Dimensions (Satellite Wagon)

- Wheelbase... 117 in.
- Overall Length... 216.1 in.
- Overall Width... 79.2 in.
- Overall Height... 56.4 in.
- Front Track... 61.9 in.
- Rear Track... 63.4 in.



Roof Air Deflector



Luggage Rack



Storage Trays 25



Foreground: Newport Custom 2-Door Hardtop Background: Newport Custom 4-Door Sedan



Foreground: Newport 4-Door Sedan Background: Newport 2-Door Hardtop

Extra care in engineering
... it makes a difference.



New Yorker Brougham 4-Door Hardtop



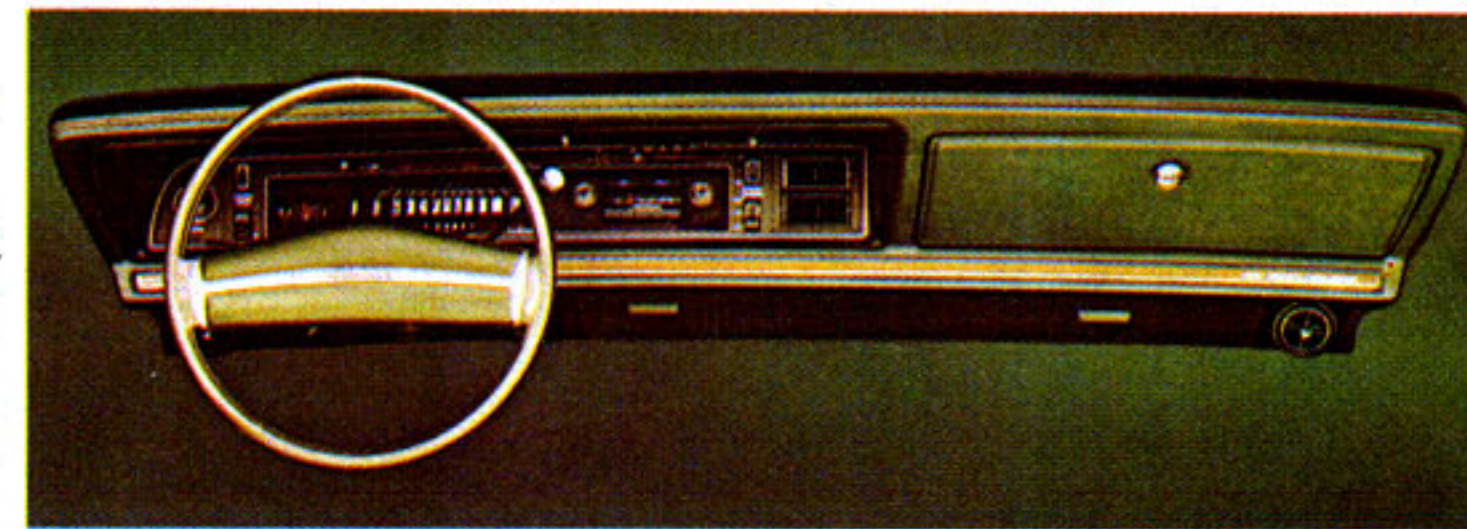
Town & Country Station Wagon

Extra care in engineering
... it makes a difference.



Newport Custom Interior

CHRYSLER
One of the nice advantages about owning a Chrysler is the performance and economy you can enjoy.



New Yorker Brougham Instrument Panel

That's right...economy.

With either of our engines (including the 440 cubic inch V-8, the largest ever produced by us), you'll enjoy the power without having to pay a premium gas price. And whether you have a Chrysler equipped with a 440 or a 400 V-8, you'll have enough power to pass, handle freeway driving, and tow a trailer.

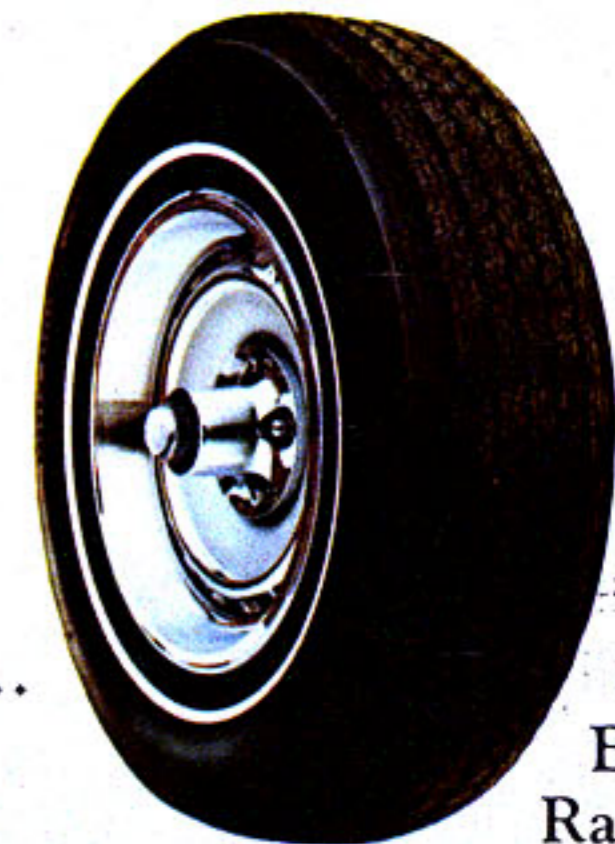
In the area of electronic advancements, Chrysler has been a leader for many years. For more reliable operation our electronic voltage regulator has proven itself in the field. So has our Electronic Ignition System which is now standard on all Chryslers. This system eliminates the need for breaker points and condenser. Excluding spark plugs, the system is essentially maintenance-free.

Due to its higher voltage, electronic ignition plus our high-speed starting motor help make starting easier in cold weather. Even at temperatures below zero.

Every Chrysler also comes through with Torsion-Quiet Ride, power steering, power front disc brakes and TorqueFlite automatic transmission. For options you have a wide choice ranging from sun roofs to stereo sound systems... vent windows to a new electronic digital clock. Check the Chrysler catalog for a complete options list.



Electronic Ignition System



Steel-Belted Radial-Ply Tires



You and your passengers need never feel crowded in a Chrysler. Last year, according to Automotive Industries' roominess index, Chrysler had the largest interior of any U.S. car. This year we expect to retain our interior leadership. Our front bench seats are over 57 inches wide. Foam-padded and contoured to assure driving comfort.

They are luxurious, too.

With a great selection of colors, fabrics and vinyls. Body-cradling bucket seats. Bench seats with fold-down center armrests. Or the flexibility and luxury of a 3-in-1 divided bench seat with individual adjustments and passenger side recliner. Optional power seats are also available.

Standard tires are durable bias-belted tires. Steel-belted radial-ply tires are offered as an option in whitewalls only. These radials offer improved tread life, road hazard protection, better traction on wet pavement and smooth high-speed ride characteristics. They'll probably be there as long as you own the car.

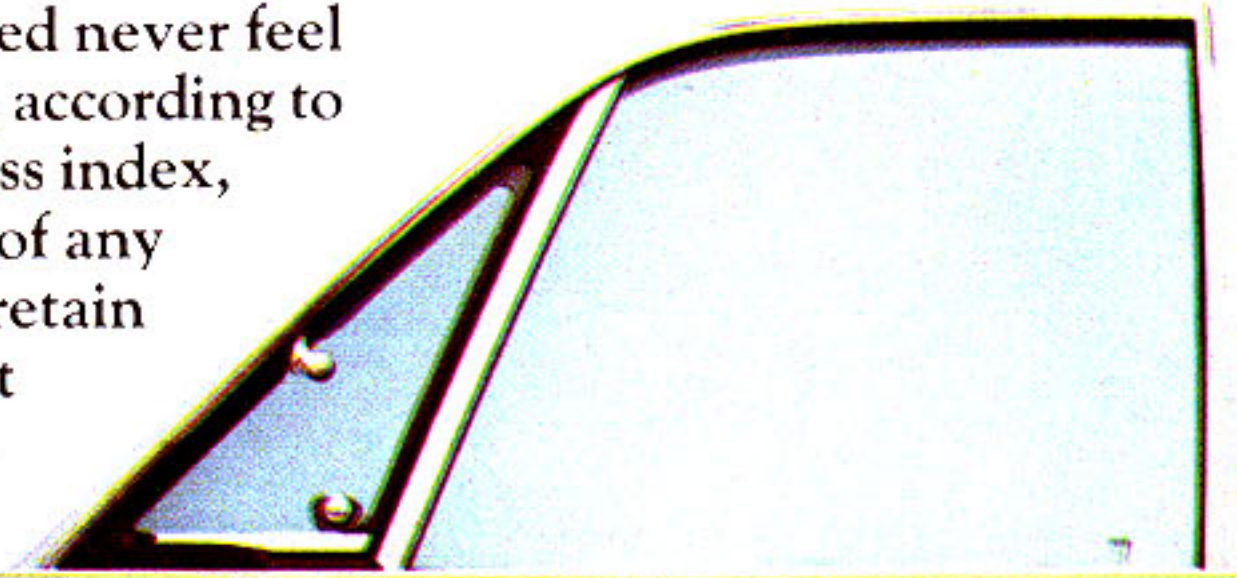
Another nice money-saving feature about a Chrysler is that the chassis only needs lubrication after 36,000 miles.

And speaking of money, many people think of a Chrysler as being unattainable. It isn't so. Our model lineup consists of 13 cars. Each and every one is a Chrysler. Some of them are priced right around what you would pay for many of the most popular smaller cars, comparably equipped.

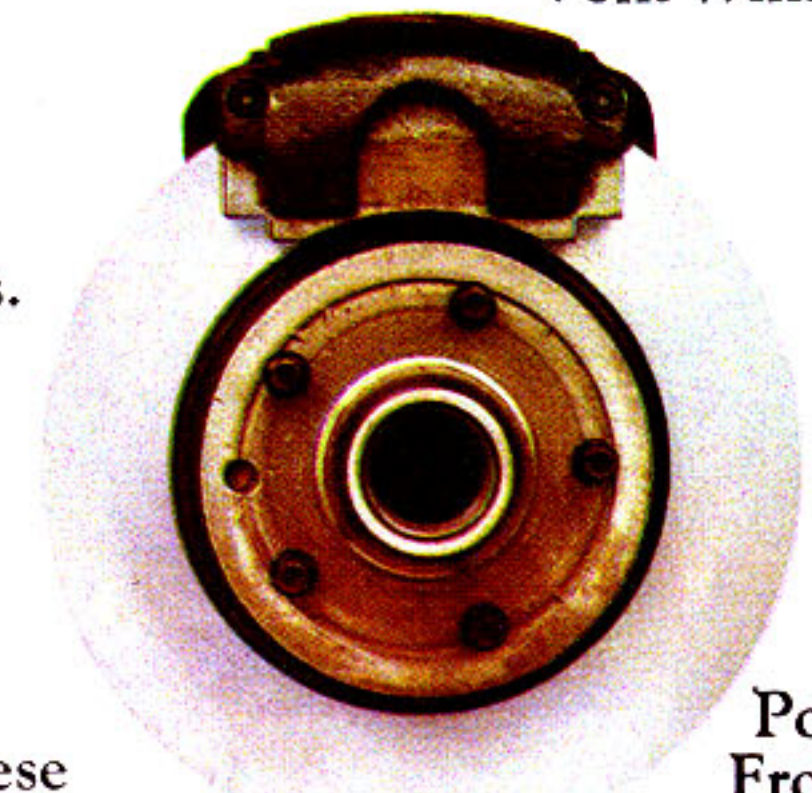
It's easy to move up to Chrysler living.

**Exterior Dimensions
(Newport 4-Door Sedan)**

Wheelbase . . . 124 in.
Overall Length . . . 230.1 in.
Overall Width . . . 79.4 in.
Overall Height . . . 56.2 in.
Front Track . . . 62.1 in.
Rear Track . . . 63.4 in.



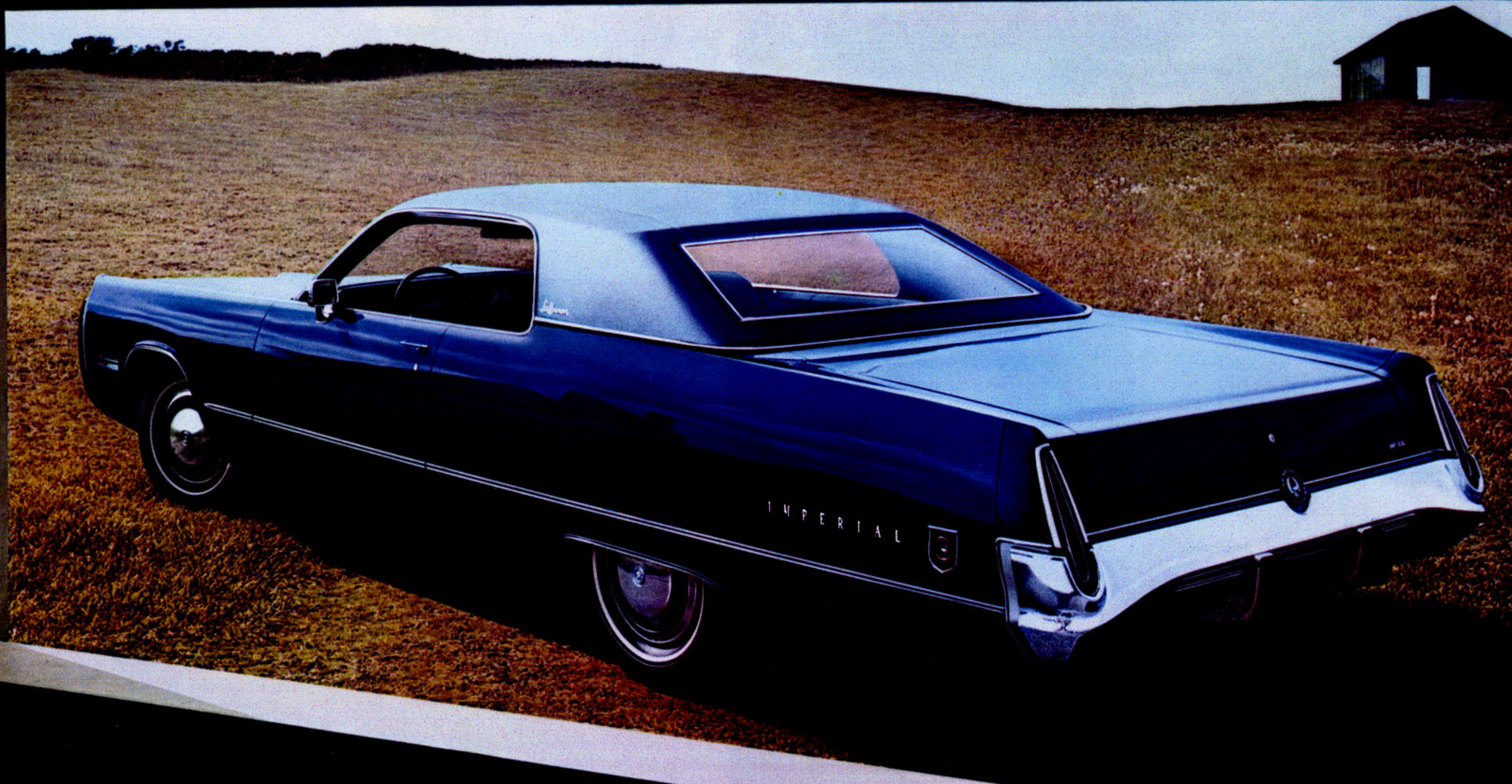
Vent Windows



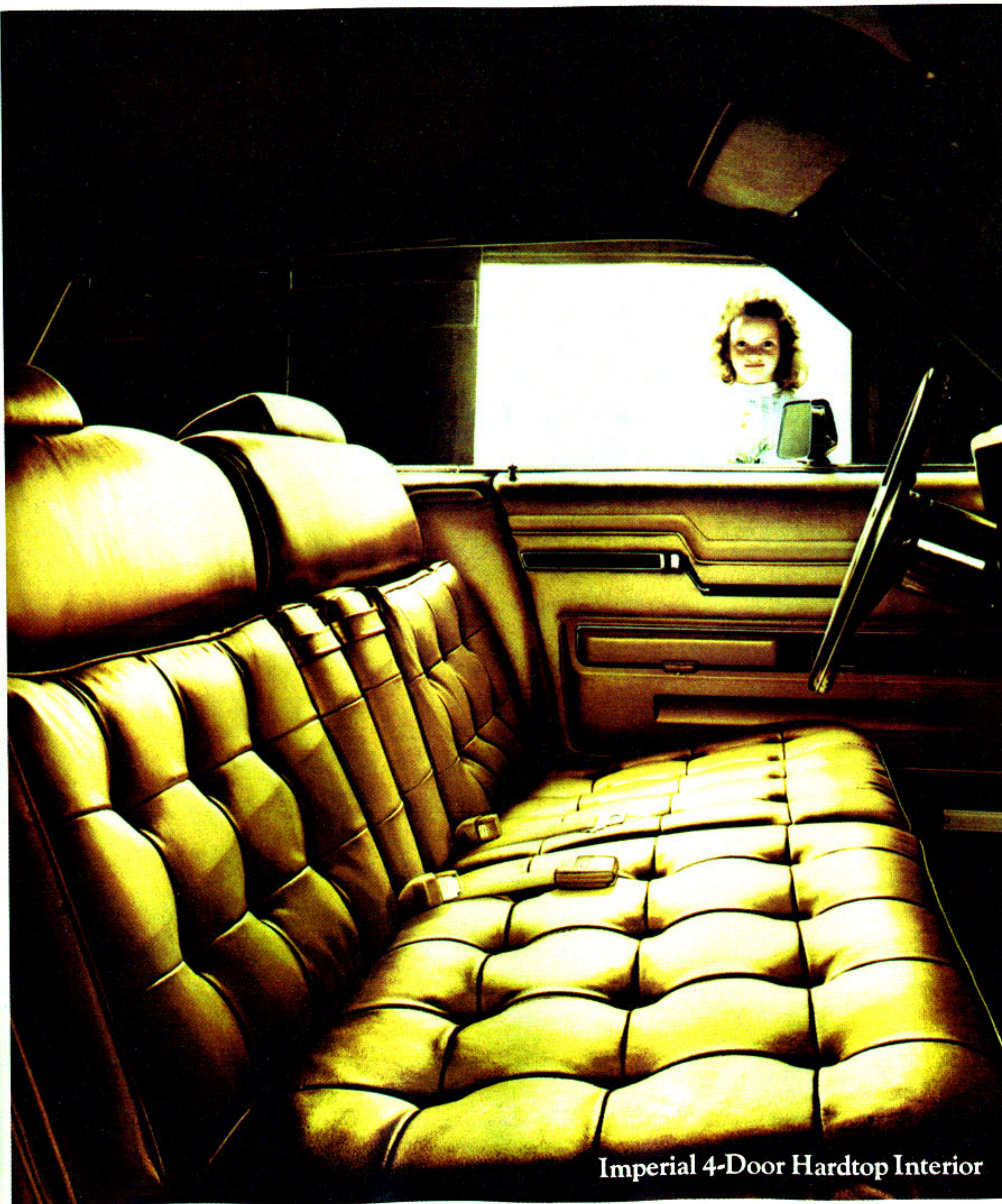
Power
Front
Disc Brakes

**Exterior Dimensions
(New Yorker 4-Door Sedan)**

Wheelbase . . . 124 in.
Overall Length . . . 230.8 in.
Overall Width . . . 79.4 in.
Overall Height . . . 56.4 in.
Front Track . . . 62.1 in.
Rear Track . . . 63.4 in.



Imperial 2-Door Hardtop



Imperial 4-Door Hardtop Interior

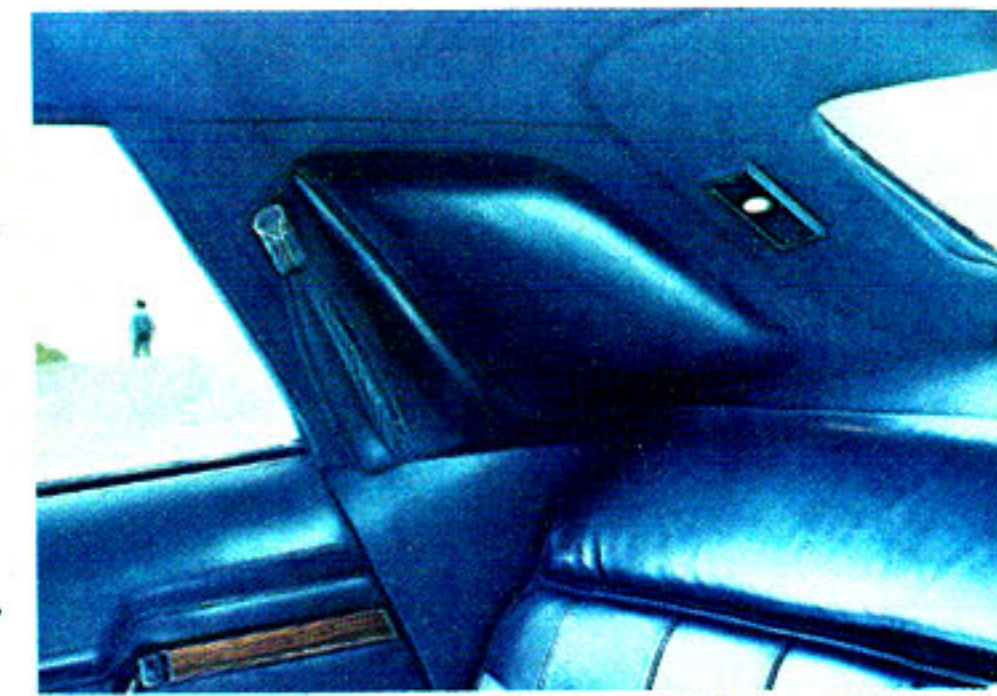
In automotive design, engineering excellence, quality workmanship and attention to detail... this is Chrysler Corporation's top-of-the-line entry.

As befits a car in its class, the Imperial is a complete automobile. The biggest engine we make, a 440 cubic inch 4-barrel V-8, is standard. So are luxury features like: TorqueFlite automatic transmission with part-throttle kickdown. A vinyl roof in your choice of six colors. Smooth, silent Torsion-Quiet Ride. Power brakes with front discs and self-adjusting rear drums. Power steering and power windows. Air conditioning with automatic temperature control. Tinted glass. A "Rim-Blow" steering wheel. The Electronic Ignition System. And a new electronic digital clock.

Among options you may want to consider are an AM/FM multiplex radio with 8-track stereo tape... sun roof... and the new Security Alarm System with optional power door locks.

The 1973 Imperial model lineup consists of a 4-door and a 2-door hardtop.

**Exterior Dimensions
(Imperial 4-Door Hardtop)**
 Wheelbase . . . 127 in.
 Overall Length . . . 235.3 in.
 Overall Width . . . 79.6 in.
 Overall Height . . . 56.2 in.
 Front Track . . . 62.4 in.
 Rear Track . . . 63.4 in.



Assist Strap and Rear Pillow



Electronic Digital Clock



AM/FM Stereo Tape



Electronic Ignition

CHRYSLER-PLYMOUTH ENGINE GUIDE

| Engine Displacement (Cu. In.) | 91.4 | | 198 | 225 | 318 | 340 | 360 | 400 | | 440 | |
|-------------------------------|--------|--------|--------|--------|--------|--------|--------|--------|--------|--------|------|
| Carburetor | 1, 1-V | 2, 1-V | 1, 1-V | | 1, 2-V | 1, 4-V | 1, 2-V | 1, 2-V | 1, 4-V | 1, 4-V | |
| Exhaust System | Single | | | Single | | Dual | Single | | Dual | Single | Dual |
| Models | | | | | | | | | | | |
| Cricket Sedan | S | O | | | | | | | | | |
| Cricket Wagon | | S | | | | | | | | | |
| Valiant | | | S(a) | O | S | | | | | | |
| Duster | | | S(a) | O | S | | | | | | |
| Valiant Scamp | | | S(a) | O | S | | | | | | |
| Duster 340 | | | | | | S | | | | | |
| Barracuda | | | | | S | O | | | | | |
| 'Cuda | | | | | S | O | | | | | |
| Satellite Sedan | | | | S | S | | | O | O | | |
| Satellite Coupe | | | | S | S | | | O | O | | |
| Satellite Wagon | | | | | S | | | O | O | | |
| Road Runner | | | | | S(b) | O | | | O | | O |
| Satellite Sebring | | | | S | S | | | O | O | | |
| Satellite Custom | | | | S | S | | | O | O | | |
| Satellite Custom Wagon | | | | | S | | | O | O | | |
| Satellite Sebring-Plus | | | | | S | | | O | O | | |
| Satellite Regent | | | | | S | | | O | O | | |
| Fury I | | | | | S | | O | O | | O | |
| Fury II | | | | | S | | O | O | | O | |
| Suburban | | | | | | | S | O | | O | |
| Fury III | | | | | S | | O | O | | O | |
| Custom Suburban | | | | | | | S | O | | O | |
| Fury Gran Coupe | | | | | S | | O | O | | O | |
| Fury Gran Sedan | | | | | S | | O | O | | O | |
| Sport Suburban | | | | | | | S | O | | O | |
| Newport | | | | | | | | S | | O | |
| Newport Custom | | | | | | | | S | | O | |
| New Yorker | | | | | | | | | | S | |
| New Yorker Brougham | | | | | | | | | | S | |
| Town & Country | | | | | | | | | | S | |
| Imperial LeBaron | | | | | | | | | | S | |

S—Standard. O—Optional. (a) 198 cu. in. engine not available in California. (b) Dual exhaust.

STANDARD SAFETY FEATURES

Extra-protection bumper system • Front disc brakes (except 6-cylinder Valiant) • Less flammable interior material • Large rear reflectors and lights • Fuel-tank impact protection • Lane-change turn signal* • Locking steering column • Energy-absorbing steering column

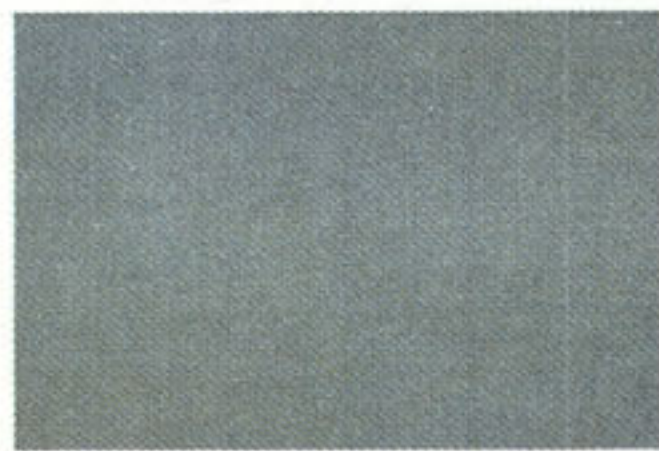
and wheel • Energy-absorbing instrument panel • High-strength windshield • Energy-absorbing front seat-back and armrests • Seat belts, all seating positions • Shoulder belts, 2 front • Keyless door locking—manual door locks with non-override lock feature, excluding

driver's door* • Interlocking door latches • Flush-type inside door release levers • Large cushioned sun visors • Dual braking system with warning light • Side marker lights • Hazard warning light system • Windshield wipers, electric • Vinyl-clad day/night

inside rearview mirror on double-ball-joint mount (standard on most models*) • Head restraints, 2 front • Locking latch on front seat-back (2-door models only) • Left outside rearview mirror • Bias-belted tires (standard on most models*). *Not available on Cricket



Polar White*



Phantom Mist Metallic*1



Carib Blue*



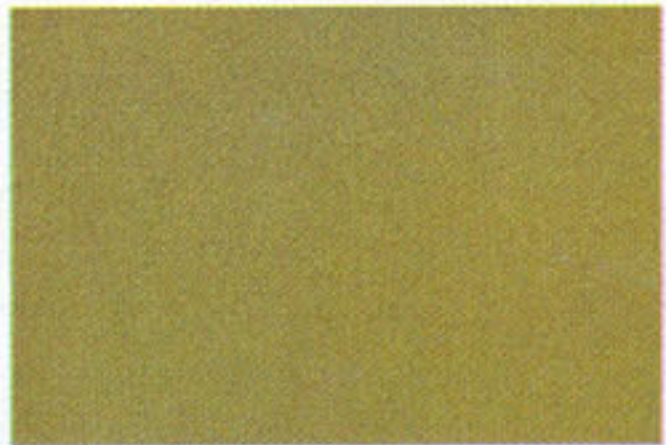
Sun Fire Yellow*



Grasshopper Metallic*



Golden Glory Metallic*



Prairie Wind*1



Sure Fire Red*



Lemon Twist2



Autumn Bronze Metallic3



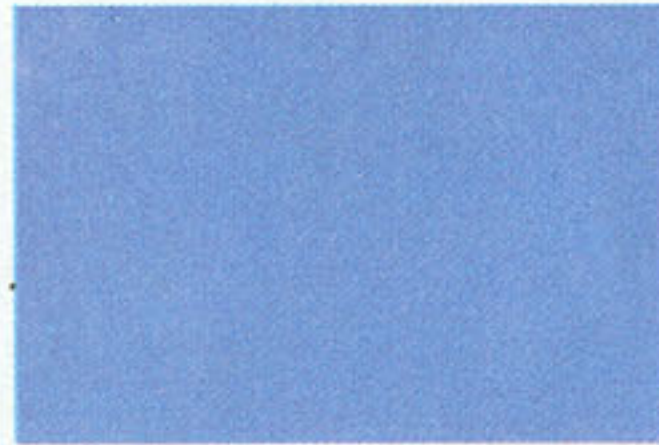
Rallye Red4



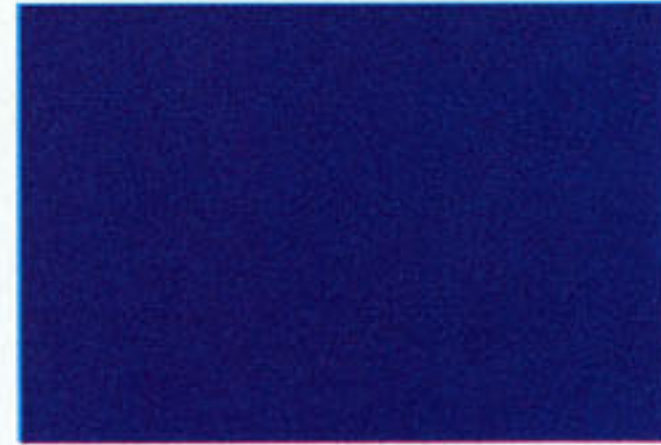
Basin Street Blue3



Silver Frost Metallic



Blue Sky



True Blue Metallic



Mist Green



Amber Sherwood Metallic



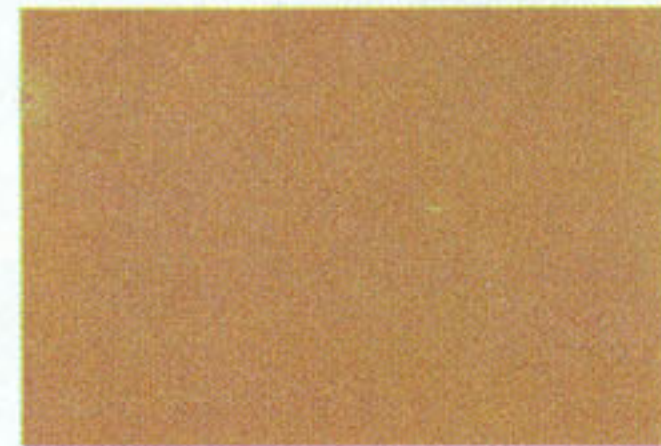
Forest Green Metallic



Tahitian Gold Metallic



Golden Haze Metallic



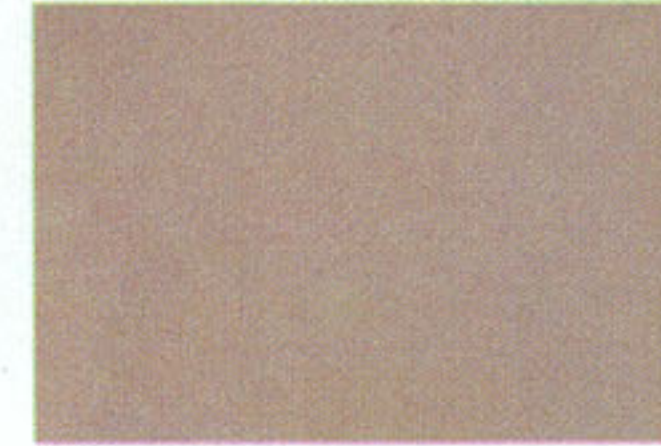
Honey Gold



Formal Black



Spinnaker White



Sahara Beige



Mojave Tan Metallic5



Regal Blue Metallic6



Coral Turquoise Metallic6



Chestnut Metallic6

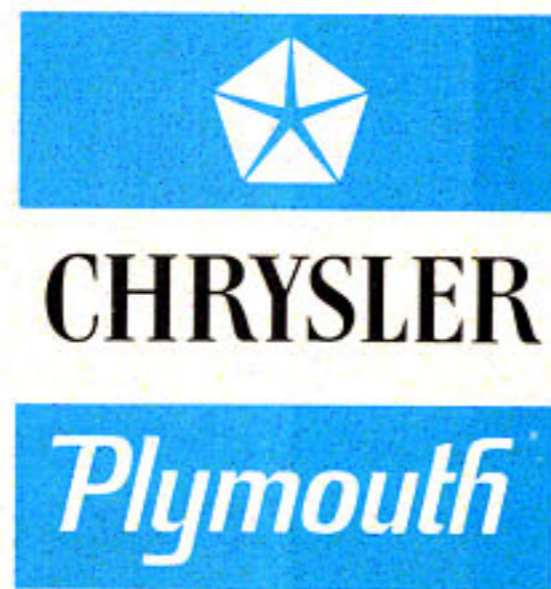


Sun Fire Yellow6



Burnished Red Metallic7

* Cricket only. 1 Cricket Wagon and Sedan with optional Decor Package only. 2 Extra-cost option. Not available Fury, Chrysler, Imperial. 3 Not available Fury, Chrysler, Imperial. 4 Not available Chrysler, Imperial. 5 Available Satellite only. 6 Available only Fury, Chrysler, Imperial. 7 Available only Chrysler, Imperial.



All product illustrations and specifications are based on authorized information. Although descriptions are believed correct at publication approval, accuracy cannot be guaranteed. Some of the equipment shown separately and on product illustrations is optional, at extra cost. Chrysler Motors Corporation reserves the right to make changes from time to time, without notice or obligation, in prices, specifications, colors and materials, and to change or discontinue models.

Keep your Chrysler or Plymouth coming through in top condition. Service it with men who know it best. See your Chrysler-Plymouth dealer.

Litho in U.S.A.
Form No. 81-005-7036 Rev. 12-1-72



Keep Your Car "Factory New"
With Genuine Mopar Parts