

# 1972 DODGE CHALLENGER





## GOOD LOOKS CAN GET YOU ANYWHERE.

Challenger is built for the driver who seeks an extremely personal attachment to his car. Who likes the extra firmness and control of honest torsion bars up front. We make no apologies for Challenger's wide stance, good looks and roomy interior. Or for the fact that the standard interior includes such unusual extras as simulated wood-grained trim and thorough instrumentation. Challenger. Get your hands on one, and find out what we're talking about.



CHALLENGER



CHALLENGER RALLYE

## SPECIFICATIONS

### ● STANDARD EQUIPMENT

#### **Engines:**

225-cu.-in. Six (Except Rallye)

318-cu.-in. V8

#### **Transmission:**

3-on-the-floor, fully synchronized manual

#### **Suspension:**

Front: Torsion bars and ball joints

Rear: Asymmetrical leaf springs

Oriflow shocks at each wheel

Heavy-duty Rallye Suspension package  
(Rallye or 340 V8 engine)

#### **Axle Ratio:**

3.23:1

#### **Interior Features:**

All-vinyl bucket seats with integral head restraints available in Blue, Green, Black, Gold, and White

One-hand bucket seat release action

Cigarette lighter

Deep-pile carpeting

Dome light

Simulated wood-grained door inserts

Glove box lock

Heater/detroster

Day/night inside mirror

Keyless door locking system

Rallye Instrument Cluster (Rallye only)

#### **Exterior Features:**

Concealed 2-speed electric windshield wipers

Ventless front windows

Wheel opening, roof drip-rail, grille, and deck lid mouldings

Dual body paint stripes (Challenger only)

Body simulated louvers and side performance tape stripes (Rallye only)

Performance hood with scoops (with Rallye or 340 V8 engine)

#### **Safety Features:**

Cleaner Air system with Vapor Saver (gasoline evaporation control system)

Antitheft steering column lock

Backup lights

Breakaway front ashtray

Combination side-marker lights and reflectors

Dual braking system

Energy-absorbing steering column and wheel

3-point safety belt system with locking retractors

Hazard warning lights

Head restraints

"Key-left-in-ignition" warning buzzer

Security locks on folding front seatbacks

Left, outside mirror

Inside mirror with double-ball-joint safety mount

Nonoverride door locks, except on driver's door

Padded instrument panel and sun visors

Parking brake

Parking brake and master cylinder warning lights

Safety-Action inside door handles

Safety-Rim wheels

Soft coat hooks

Soft knobs on window cranks

Turn signals with lane-change feature

Windshield wipers and washers

#### **Tires:**

7.35 x 14, polyester, BSW (Challenger only)

F70 x 14, bias-belted, WSW (Rallye or 340 V8 engine)





**Wheels:**

14 x 5  
14 x 5.5 (F70 x 14)

**Brakes:**

10" x 2½" front and rear, self-adjusting  
Dual braking system

**Electrical System:**

Battery: 12-volt, 46-amp-hr  
Alternator: 41-amp  
Transistorized voltage regulator

**SELECTED CHALLENGER OPTIONS****Engine:**

340 V8 4-bbl. (includes performance hood with scoops, dual exhausts with bright tips, electronic ignition system)

**Transmissions:**

TorqueFlite 3-speed automatic  
4-speed manual (with 340 V8 only)

**Convenience Items:**

Airtemp air conditioning  
Electric clock (standard with Rallye Instrument Cluster)  
Front center console (with TorqueFlite automatic transmission)  
Tinted glass (recommended with air conditioning)  
Rear window defogger  
Bumper guards, front and rear  
Bright, left, remote-control outside mirror  
Dual racing mirrors (bright or painted)  
Instrument-panel-mounted hood release  
Variable-speed windshield wipers with electric washers  
Sure Grip differential  
Rallye Suspension (standard with Rallye and 340 V8)

**Power Assists:**

Power front disc brakes  
Power steering

**Radio/Tape Accessories:**

Music Master AM radio  
Music Master with stereo tape cassette  
Multiplex AM/FM stereo radio  
Single rear-seat speaker (with Music Master only)  
Dual rear-seat speaker (with stereo or cassette)

**Appearance Items:**

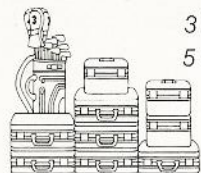
Sill mouldings  
Door-edge protectors  
Rallye Instrument Cluster (standard on Rallye; NA 6-cylinder engine)  
Vinyl roof  
Sun roof, includes vinyl roof  
Deluxe wheel covers  
Rallye wheels  
Road wheels with chrome trim ring  
White sidewall tires  
Raised white letter tires

**Optional Packages:**

**Light Package** (items available in package only) includes: fender-mounted turn signal indicators, map and courtesy lights, glove box light, ash receiver light, trunk light, ignition switch light with time delay, instrument panel flood light with time delay

**E-Z Order Package** (NA with 340 V8 engine) includes: Light package, power steering, Music Master AM radio, left, remote-control outside mirror, variable-speed windshield wipers with electric washers, deluxe wheel covers, white sidewall tires, undercoating and hood insulator pad.

**Axle Performance Package** (with 340 V8 engine only) includes: 3.55 heavy-duty axle, Sure Grip differential, high performance radiator, fan shroud, power steering oil cooler (when power steering is ordered)

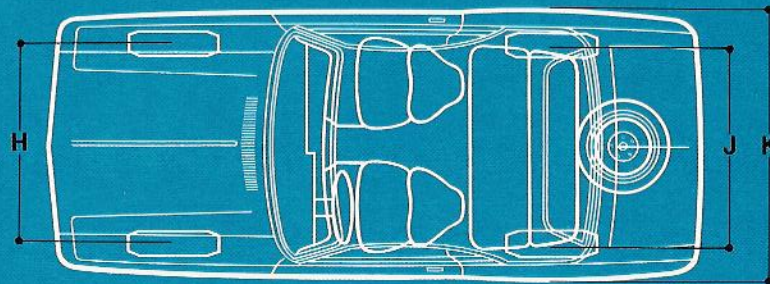
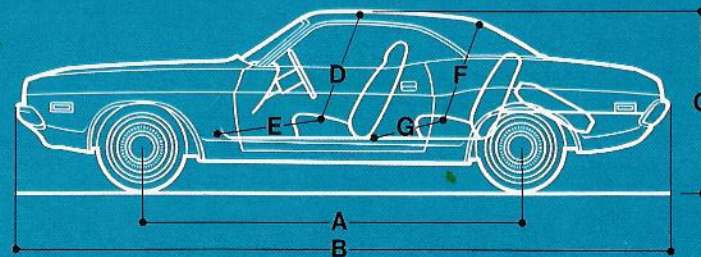
**LUGGAGE CAPACITY**

3 lady's train cases  
5 lady's overnight bags  
1 man's overnight bag  
1 golf bag

**EXTERIOR COLORS**

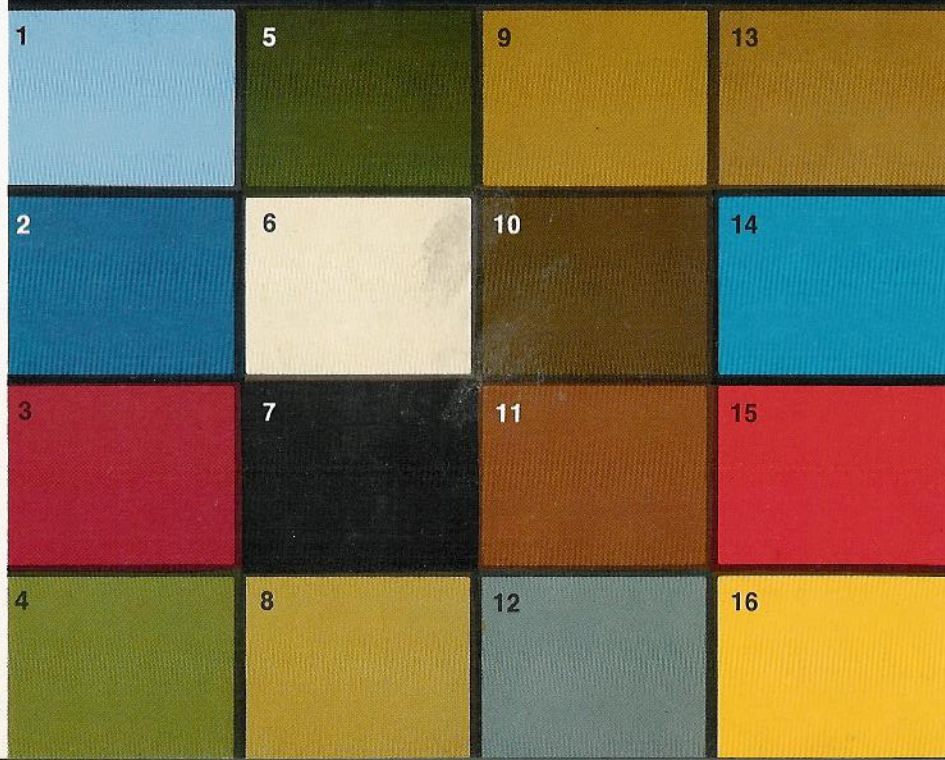
- |                         |                             |
|-------------------------|-----------------------------|
| 1. Light Blue           | 9. Gold Metallic            |
| 2. Bright Blue Metallic | 10. Dark Gold Metallic      |
| 3. Red                  | 11. Dark Tan Metallic       |
| 4. Light Green Metallic | 12. Light Gunmetal Metallic |
| 5. Dark Green Metallic  | 13. Medium Tan Metallic     |
| 6. Eggshell White       | 14. Super Blue              |
| 7. Black                | 15. Hemi Orange*            |
| 8. Light Gold           | 16. Top Banana*             |

\*(Hi-impact color, optional at extra cost)



<b>A. Wheelbase</b>	<b>110"</b>	<b>F. Rear headroom</b>	<b>35.6"</b>
<b>B. Overall length</b>	<b>191.3"</b>	<b>G. Rear legroom</b>	<b>30.9"</b>
<b>C. Overall height</b>	<b>50.9"</b>	<b>H. Front track</b>	<b>59.7"</b>
<b>D. Front headroom</b>	<b>37.4"</b>	<b>J. Rear track</b>	<b>61.6"</b>
<b>E. Front legroom</b>	<b>42.3"</b>	<b>K. Overall width</b>	<b>76.3"</b>

(All dimensions based on average specifications for Challenger two-door hardtop.)





**CHALLENGER RALLYE.  
IT SPEAKS SOFTLY, BUT GIVES YOU A BIG KICK.**

The way things are today, maybe what you need is not the world's hottest car. Maybe what you need is a well-balanced, thoroughly instrumented road machine. One with a highly individualized style; a well proportioned balance between acceleration, road-holding, braking—you know the bit.

This is it. Challenger Rallye. Reasonable to buy, to run. About as enjoyable in the legal range as anything its size. And a lot more thoughtfully done.

1972 Challenger Rallye

FORM NO. 81-205-2050

8/71. LITHO IN U.S.A.



*All product illustrations and specifications are based on authorized information. Although all descriptions are believed correct at publication approval, accuracy cannot be guaranteed. Some of the equipment shown on product illustrations is optional, at extra cost. Dodge Division reserves the right to make changes from time to time, without notice or obligation, in prices, specifications, colors and materials, and to change or discontinue models.*

