

IF YOU CARE HOW MUCH YOU PAY... YOU COULD BE DODGE MATERIAL.



# 1970 DODGE Coronet

'70 CORONET: open the door and say "ahhh"...



**SURPRISE.** With the exception of the optional console (some people like them, some don't), these are the standard seats in the Coronet 500 hardtop. The convertible offers a full-width vinyl-covered bench seat with fold-down center armrest (buckets optional). Not bad for a car designed to save you money. Not bad for a car that isn't. Note the other handy extras that you can add at your discretion. For example, Dodge offers two different types of adjustable driver's seat. Standard is the regular back-and-forward adjuster. The six-way\* manually adjustable seat, shown here, has a clever spring-actuated mechanism. It'll cost you just about half as much as an electrically actuated seat. Who says you have to be rich to be comfortable? \*Optional at extra cost.



'70 CORONET: very big for its price.



'70 CORONET. Buy one of these and have enough left over to take it out Saturday night. Who ever thought that an honest low-priced car would end up looking like this? Enough of sized-down, stripped-down savers. Coronet 500. Long, one of the longest in its field. Good-looking? Take another look for yourself. Then price one out. What did Dodge forget? Perhaps you'd better take a close look inside. But watch it. You're in for a nice . . .



CORONET R/T: if you pay more money... make sure you get more car.



**CORONET R/T.** If you like a little more posh with your punch, here's the scoop. On the hood. On the rear quarters. Buckets inside. Carpet on the floor. You know. On the punch side, there's an uneasy 440 Magnum up front; you can get either TorqueFlite or the four-speed full-synchro with Hurst shifter at no extra cost; the Rallye Suspension, brakes, and other goodies are all in order. Tell your mother it's a nice old man's car. Then just watch it, Hot Foot. With a little care, she'll never know the difference.



SUPER BEE: it drives you right out of the high-rent district.



**SUPER BEE.** It will drive you right out of the high-rent district. And rapidly. 383 Magnum. Rallye Suspension. Charger instrument panel. A new full-synchro three-speed manual trans can save you a bundle on the down stroke. Four-speed manual or TorqueFlite automatic still available at extra cost, if you insist. Note the new optional SixPack 440-cube V8 with the nasty hood. (If you don't know what a SixPack is, go back to your knitting. It's three two-barrels perched on a special intake manifold, perched on a Premium 440.) Order your Super Bee with one of the new high-impact\* colors: Plum Crazy (shown here), Sublime, Banana, Go-Mango, and Hemi Orange. \*Optional at extra cost.



**CORONET STANDARD EQUIPMENT**

318-cu.-in. 2-bbl. V8 or 225-cu.-in. 6-cylinder engine is standard on most models; 383 Magnum V8 is standard in Super Bee models, and 440 Magnum V8 is standard in Coronet R/T models  
 3-speed manual transmission, shift lever on steering column; full-synchro floor shift standard on Super Bee models; Torque-Flite automatic standard on R/T models  
 All-vinyl, front, full-width bench seat on most models  
 Cloth-and-vinyl front bench seat

on 440 and 500 4-dr. sedans  
 All-vinyl front bucket seats on 500 and R/T hardtops and R/T convertibles  
 Deep-pile carpeting (except Coronet Deluxe models which have color-keyed mats)  
 3-spoke steering wheel with partial horn ring (except Coronet Deluxe models)  
 Heater/defroster  
 Cigarette lighter  
 19-gallon fuel tank  
 Foot-operated parking brake

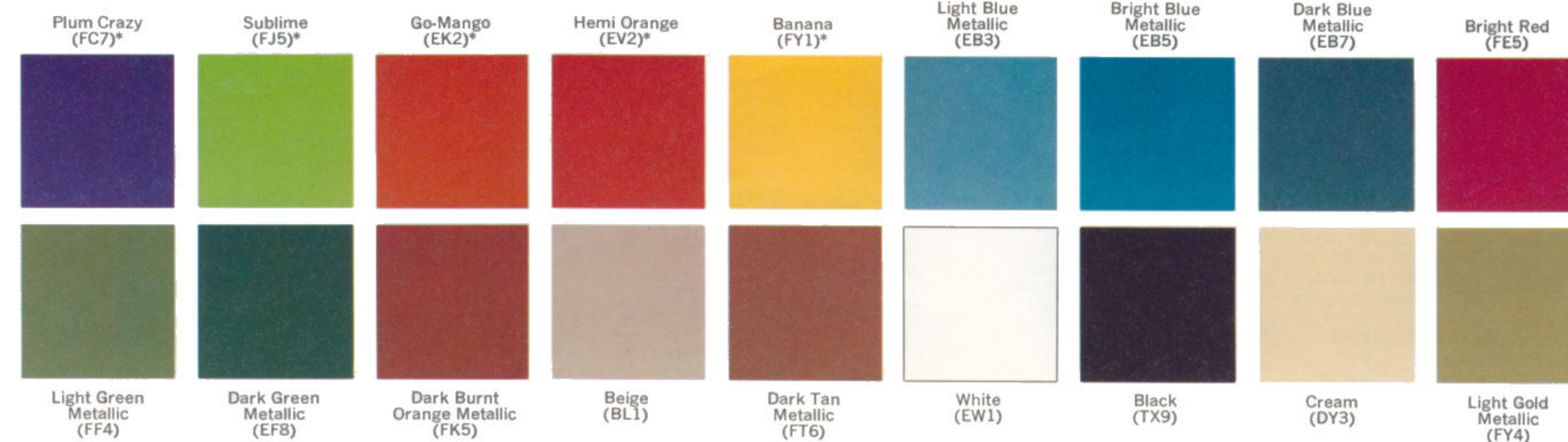
Self-adjusting brakes  
 Fiber-glass-belted tires

**STANDARD SAFETY EQUIPMENT**

Dual Braking System  
 Turn signals with lane-change feature  
 Padded instrument panel  
 Master cylinder and parking brake warning light  
 Windshield washers  
 Safety-Action inside door handles  
 Mirror, left, outside rearview  
 Front seat belts

Combination side marker lights and reflectors  
 Soft knobs on window cranks  
 Energy-absorbing steering column and wheel  
 Backup lights  
 Padded sun visor  
 Windshield wipers, electric; parallel-action blades with glare-reducing finish  
 Hazard Warning System  
 Safety-Rim wheels  
 Prismatic, day/night, inside rearview mirror with double-ball-joint mount

Rear seat belts (including belt for center passenger)  
 Front shoulder belts, left and right (rear shoulder belts are optional, except convertibles)  
 Manual latches on folding-front seatbacks  
 Nonoverride door locks, except driver's door  
 Steering column with 3-way lock: ignition, steering, and transmission  
 Head restraints, front seat only  
 "Key-left-in-ignition" warning buzzer



\*Optional at extra cost.

**THE '70 DODGE CORONET LINE. If you like a big choice . . . you could be DODGE MATERIAL.**



Coronet 500 2-door hardtop



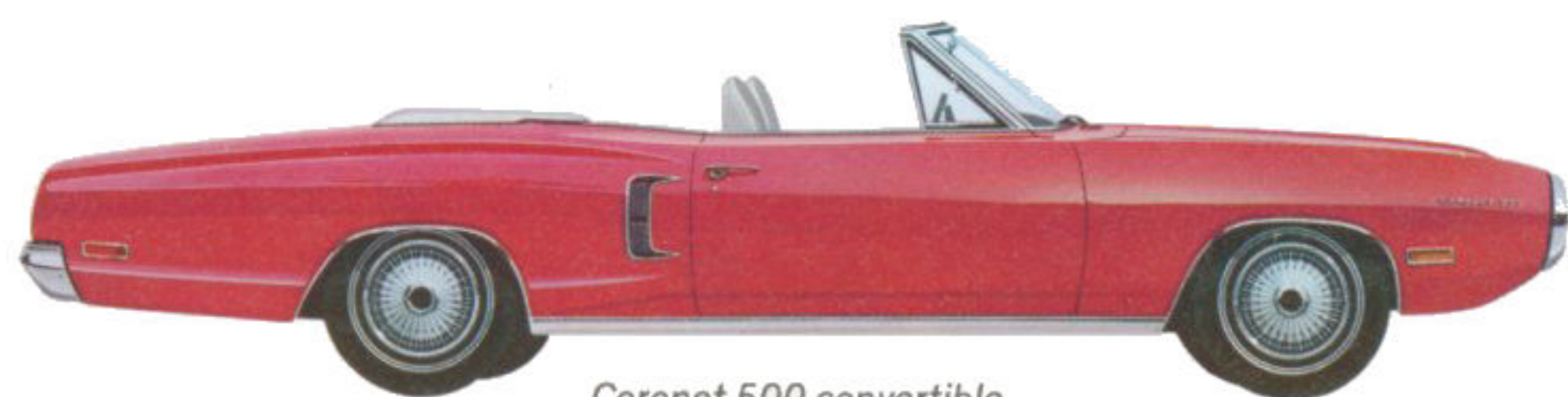
Coronet 440 2-door hardtop



Coronet Deluxe 2-door coupe



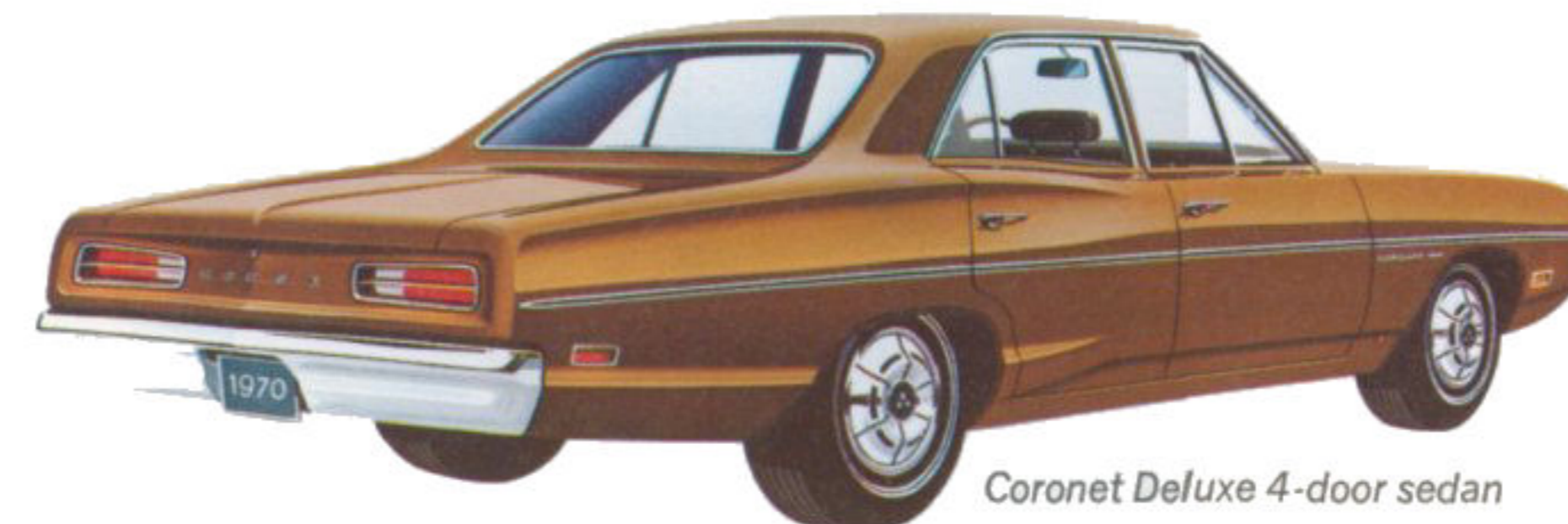
Coronet 500 station wagon (2-seat and 3-seat models)



Coronet 500 convertible



Coronet 440 4-door sedan



Coronet Deluxe 4-door sedan



Coronet 440 station wagon (2-seat and 3-seat models)



Coronet 500 4-door sedan



Coronet 440 2-door coupe



Super Bee 2-door coupe



Coronet Deluxe 2-seat station wagon



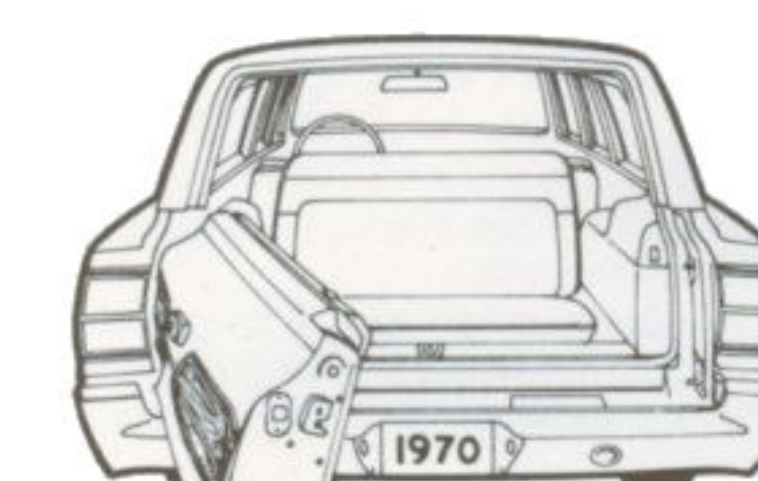
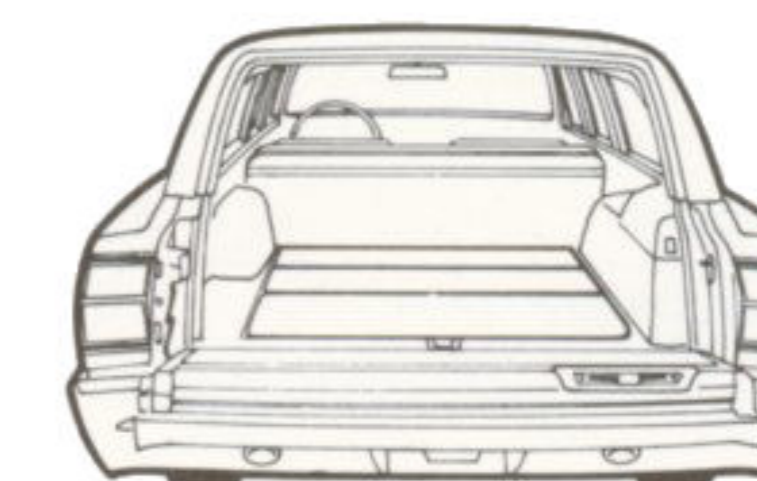
Coronet R/T 2-door hardtop



Coronet R/T convertible



Super Bee 2-door hardtop



Dual Action tailgate is standard on all 1970 Dodge Coronet wagons.

Mirror, right, outside  
 Power brakes  
 Power steering  
 Power windows (convertibles and convertibles only)  
 Radio, Music Master AM with push buttons  
 Radio, solid-state AM-FM  
 Radio, AM with eight-track stereo-tape and multiple-speaker system  
 Rear seat speaker (N.A. wagons)  
 Rear shoulder belts (rear lap belts are standard); rear shoulder belts N.A. convertibles)  
 Rear window defogger (N.A. wagons)  
 Tinted windshield  
 Tinted windshield and windows  
 Undercoating and hood insulation  
 Windshield wipers, 3-speed, electric (2-speed, standard; 3-speed wipers standard on Super Bee and Coronet R/T models)

## Appearance

Belt moldings (2-door models only; standard on convertibles and 500 hardtops)  
 Bumper guards with rubber insets, front and rear (front only on Coronet wagons)  
 Console (with bucket seats only)  
 Door-edge protector moldings  
 Color-keyed protective rubber floor mats  
 Color-keyed vinyl-insert protective side moldings (standard Super Bee, R/T, and 500 wagons)  
 Pedal dress-up (standard, 500 and R/T)  
 Rallye Instrument Cluster (optional on Coronet R/T only; standard, less clock/tach, on Super Bee)  
 Sunrider (includes clock on Super Bee)  
 Hood tie-down pins (Super Bee and R/T only)  
 Steering wheel with "Rim Blow" horn  
 Steering wheel, simulated walnut, sports-type wheel covers; deluxe, deep-dish, and wire wheel types (all 14"; deluxe wheel covers standard on Coronet 500)  
 All-steel Rallye wheels (14" or 15")  
 All-steel chromed road wheels with chromed trim ring (14" only)  
 White sidewall tires (std., Super Bee and R/T)  
 Black sidewall tires with raised white letters  
 Longitudinal performance stripe (a no-extra-cost substitution for burnished stripe on Super Bee models only)  
 Two-tone paint (N.A. on convertibles or Coronet 500 wagons)  
 Vinyl roof: Black, White, Green, and Gator  
 Grains (offered on all coupes and hardtops, and 440 and 500 sedans)  
 Bright tip exhaust (R/T and Super Bee)

## Performance

(225 Six and 318 V8 are standard engines on most Coronet models.)  
 383 2-bbl. V8 (Deluxe, 440 and 500 models)  
 383 4-bbl. V8 (Deluxe, 440 and 500 models)  
 383 Magnum V8 (standard on Super Bee models only and N.A. other models)  
 440 Magnum V8 (standard on R/T models only and N.A. other models)

2-door suspension (standard on R/T models)  
 Spare Grip differential  
 Trailer Towing Package (N.A. with 225 Six, 440 Six, or 426 Hemi V8; see your Dealer for more details)  
 4-on-the-floor manual transmission with Hurst floor shifter (optional on 383 4-bbl. V8, 440 V8, and Hemi)  
 TorqueFlite 3-speed automatic transmission (standard on R/T models)

## Station Window Options

Luggage rack  
 Power tailgate window (standard on 3-seat wagons)  
 Tailgate window wiper with washer (power tailgate window option required on 2-seat wagons)  
 Rear compartment lock

## Accessory Groups

### Radio Group

Music Master AM radio  Power steering   
 3-speed wipers (standard on Super Bee and R/T models)  Mirror, left, outside, remote-control  Deuce wheel covers (standard, 500 models)

### Protection Group

(N.A. on Super Bee, R/T, or 500 wagons)   
 Vinyl-insert body side moldings  Bumper guards, front and rear, and front-overshield molding  Door-edge protectors

### Light Group

Lights: Autray  Glove box  Map (standard on 500 and R/T models)  Trunk  Fender-mounted turn signals  Ignition with time delay  Rear door switch for dome light (standard on 500 4-door model)  Headlamp-on reminder buzzer  Cargo light (standard, 3-seat wagons)

### Seat Belt Group\*

Instrument panel "Fasten Seat Belt" light with time delay  High-riyled push-button buckles, color-keyed  Loop guides on belt ends  Buckle stowage brackets

\*Items available in group only.

rear, and OverDrive shocks at each wheel. Suspension is rubber isolated. Super Bee comes equipped with Rallye Suspension, a special Handling Package, which includes: HD torsion bars, sway bar, and HD rear springs. Firm Ride shocks are also standard on Super Bee.

## Transmissions

Four transmissions are offered for Coronet models.

- Three-speed manual (column-mounted shifter), standard with 225 Six or 318 V8 only and N.A. with any other engines.
- Three-speed synchronized manual (floor shift), standard on the 383-4-bbl-V8 Super Bee and optional on other 383-4-bbl-V8 models only. N.A. with any other engines.
- Four-speed synchronized manual (floor shift), optional on 383 4-bbl., 440 Magnum, 440 SuperPack, and 426 Hemi only. N.A. other engines. No-cost option on R/T.
- TorqueFlite three-speed automatic transmission (selector, column-mounted except on optional-console-equipped models), standard on R/T models and optional on all other engines.

## Rear Axle Ratios

A number of rear axle ratios are offered, at extra cost, with some Coronet engine and

All product illustrations and specifications are based on authorized information. Although all descriptions are believed correct at publication approval, accuracy cannot be guaranteed. Some of the equipment shown on product illustrations is optional, at extra cost. Dodge Division reserves the right to make changes from time to time, without notice or obligation, in prices, specifications, colors and materials, and to change or discontinue models.



Engines	displacement/ cylinders	225 cid Six	318 cid V8	383 cid V8	383 cid V8	383 cid V8 Magnum	440 cid V8 Magnum	440 cid V8 318Pack	426 cid V8 Hemi
bore x stroke (in.)		3.4 x 3.12	3.91 x 3.31	4.25 x 3.38	4.25 x 3.38	4.25 x 3.38	4.32 x 3.75	4.32 x 3.75	4.25 x 3.75
carburetor		1-bbl.	2-bbl.	2-bbl.	4-bbl.	4-bbl.	4-bbl.	3 2-bbl.	2 4-bbl.
compression ratio		8.4:1	8.8:1	8.7:1	9.5:1	9.5:1	9.7:1	10.5:1	10.28:1
exhaust system		single	single	single	dual	dual	dual	dual	dual
horsepower @ rpm		145 @ 4000	230 @ 4400	290 @ 4400	330 @ 5000	335 @ 5200	375 @ 4600	390 @ 4700	425 @ 5000
torque (lb.-ft.) @ rpm		215 @ 2400	320 @ 2000	390 @ 2800	425 @ 3200	425 @ 3400	480 @ 3200	490 @ 3200	490 @ 4000
fuel recommended		regular	regular	regular	premium	premium	premium	premium	premium

Some options, such as Airflow air conditioning, automatic speed control, console, floor brakes, performance axle equipment, tires and wheels of specific designs, Trucking, Trailer hitch and rear-mounted manual transmissions, are available only with certain other items of equipment. Four Dodge Dealer will gladly assist you in selecting items within their availability.