

Luxurious FAIRLANE

TORINO '68

...Ford's newest bright idea



TORINO '68



Above: Torino GT Fastback (also shown on cover) and Torino GT Convertible

Luxurious FAIRLANE Fastbacks, Hardtops, Convertibles, Wagons, Sedans!

Just when you think you've seen everything, Ford lights up the landscape with a whole new line—Torino! Six beautiful models. Six-passenger size. Exciting style. Surprising low price.

Torino—in the new quick-handling action-size that Fairlane invented. A neat, nimble, low-cost package as solid as the Federal Reserve. Torino—roomy enough to hold six vitamin-enriched adults . . . yet trim enough to laugh its way through city traffic and add 12 inches to every parking spot in the land!

Torino—all new and all excitement! A half-dozen cool ones that beautifully add up to Ford's newest bright idea. Two Torinos for luxury . . . three Torino GT's for action . . . even a new luxury wagon called Torino Squirrel

Here, and on the preceding page and cover, are the Torino GT's: Fastback, Convertible and Hardtop. Ventless side glass gives you an unobstructed view. GT stripes, black grilles, styled steel wheels—all standard—lend undeniable sports flair. You can have the Fastback with its unique new "C" stripe or with rocker panel stripes like the other GT's.

Interiors are luxuriously crafted in leather-smooth vinyl (seven color choices). Deep-pleated bucket front seats are standard, or if you prefer, you have the option of a full-width, 3-passenger front seat. As you can see at right, both styles are equally handsome. Wall-to-wall carpeting and simulated wood graining on instrument panel complete the smart decor.

Standard power comes lively in GT's—straight from a hot new 302-cu. in. V-8. This one's a masterpiece of Ford-pioneered lightweight/high output design. It transforms regular gas into quick, effortless motion . . . and takes remarkably little of the former to accomplish the latter! Besides the 302, you have three V-8 options: two 290-cu. in. V-8's plus the big new 427-cu. in. Cobra V-8 with 4-barrel carb and hydraulic lifters (in Hardtop and Fastback). Standard transmission with the 302 and 390's is a fully synchronized 3-speed with 4-speed floor shift optional. SelectShift Cruise-O-Matic for those who like to mix automatic and manual shifting is available with every engine.

Wide-oval sports tires with their

greater traction and roadability are standard on GT's. In the GT Convertible, one of Ford's better ideas is the 5-ply, vinyl-coated top that is power-operated. Another is the big rear window of scratch- and stain-resistant solid safety glass which zips open to give you straight-through ventilation.

In Torino GT's (and all other models), Ford has more better ideas for safety in 1968. A few of many Ford Motor Company Lifeguard Design Safety Features include: front seat shoulder belts, energy absorbing steering column and steering wheel, safety-design door handles, vehicle side markers. (See list on page 17.)

In addition to the terrific Torinos, your Ford Dealer has eight quick-size Fairlane 500's and Fairlanes for '68. (You'll meet them further along in this catalog.) Torino or Fairlane, you really owe it to yourself to test-drive one of these great '68s from Ford!

Torino GT

Standard Equipment Highlights

Power Team: 302-cu. in. V-8 and Synchro-Smooth Drive □ Choice of 15 Colors in Super Diamond Lustre Enamel □ 7 Color-Keyed All-Vinyl Upholsteries □ Bucket Seats □ Wide-Oval Sports Tires □ Styled Steel Wheels □ Unique GT Stripes and Identification □ Power Top with Glass Rear Window (convertible) □ All the Ford Motor Company Standard Lifeguard Design Safety Features (for the complete list of Standard Equipment, see page 17).



Torino GT Bucket Seat Interior with optional Headrests



Torino GT Optional Full-Width Front Seat

Light up your life with **TORINO** Ford's newest bright idea



TORINO

You've never seen cars as rich as Torino at the price! Elegant styling outside. In both the Torino Hardtop and Torino Sedan ultra-smart long-hood, short-deck proportions say 1968 . . . and here's where the action is!

Elegant styling inside. Torino interiors (six selections) are tailored of rich nylons and leather-like vinyls, fabrics beauty-protected against soiling by Scotchgard® or Zepell® Wood graining of simulated walnut enhances door trim and instrument panels. Six people can very easily get carried away with Ford's brightest idea. Torino, for all its handy size and parkability, is big everywhere room counts. Doors open wide to let you step in and out with ease. Seats give you firm, comfortable support . . . with plenty of width for shoulders . . . plenty of stretch-out room for legs.

Torino's long list of standard equipment includes many important new Ford Motor Company LifeGuard Design Safety Features. Among them: energy absorbing front seat backs and instrument panel, both with padding; safety-design window regulator knobs, coat hooks, and radio control push buttons. See the complete list on page 17.

Power windows, a new Torino luxury option, let you raise or lower all four

side windows as easily as pointing your finger. Individual controls on doors allow passengers to regulate windows nearest them. Master control on driver's door has a "lock-out" switch to inactivate all but his controls when desired.

One of many Ford better ideas for '68 is new Comfort-Stream Ventilation. Available on all models, Comfort-Stream Ventilation keeps interior air

fresh with the windows closed so you can fully enjoy the hushed quiet of the new Torino ride.

Also new for your pleasure is the AM/FM Stereo Radio option. Twin speakers, mounted ahead of the front doors, give a rich "concert hall" effect to your favorite AM and FM radio programs. Five push buttons provide instant station selection. Control knob lets you balance volume from each speaker to your individual taste. Dual rear speakers, available as a separate option, can be blended into the system to surround you with beautiful sound.

For year-round "weather watch" in Torino, there is new Select-Aire Conditioner. Simple controls turn on comfort for every season—cooling in summer, heating in winter—quickly and dependably with this complete comfort option.

For performance, you have four great V-8 options to choose from: a hot, new 302-cu. in. V-8, two 390's and the big Cobra that tops off at a lusty 427 cubic inches (in Hardtop). And Ford's "better idea" automatic transmission, SelectShift Cruise-O-Matic, is available with every one of them!

Drive a Torino today and see how it can light up your life!

Torino Standard Equipment Highlights

Power Team: 200-cu. in. Six Engine and Synchro-Smooth Drive □ Choice of 15 Colors in Super Diamond Lustre Enamel □ 6 Color-Keyed Cloth and Vinyl Upholsteries □ Full-Width Seats □ Simulated Wood Paneling on Instrument Panel □ Full Wheel Covers □ All the Ford Motor Company Standard LifeGuard Design Safety Features (for the complete list of Standard Equipment, see page 17).



Optional Power Windows



Optional AM/FM Stereo Radio



Torino 2-Door Hardtop (above) and 4-Door Sedan

Torino 2-Door Hardtop and 4-Door Sedan Interior



© TM GM Co. © TM EL du Pont de Nemours & Co.



TORINO SQUIRE

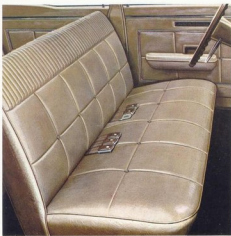
A most luxurious wagon, the new Torino Squire has all the richness of simulated wood paneling outside, the leathery look of pleated vinyl trim and wall to wall carpeting inside.

Among many better ideas is the standard Magic Doorgate. An uncanny double-action hinge lets the door swing aside for passengers or swing down for cargo. Just like magic!

The Torino Squire can be all business and pack away 93.4 cu. ft. of cargo. With the Doorgate down you can carry loads over 9 feet long. Below the floor there's a concealed, lockable compartment of 8.2 cu. ft. for valuables. Or, like other Torinos, the Squire can go all-out for luxury or sports. Luxury options like AM/FM Stereo Radio, Comfort-Stream Ventilation, Power Doorgate Window. Sporty options like Power Front Disc Brakes, choice of three V-8's (up to 390 cu. in.) and SelectShift Cruise-O-Matic, the automatic you can stick-shift whenever you want to. Just name your kind of Torino Squire!

Torino Squire Standard Equipment Highlights

Power Team: 200-cu. in. Six Engine and Synchro-Smooth Drive □ Choice of 15 Colors in Super Diamond Lustre Enamel □ 5 Color-Keyed All-Vinyl Upholsteries □ Simulated Wood Paneling Exterior Trim □ Magic Doorgate □ Quick-Converting Second Seat □ Deluxe Wheel Covers □ All the Ford Motor Company Standard Lifeguard Design Safety Features listed on page 17.



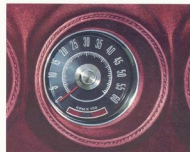
Torino Squire Interior (one of five color choices)

1968 Options

Here are some exciting samples of options available on 1968 Torinos and Fairlans: **Sports Tachometer**. Mounted in the instrument panel at eye level, registers 0-6000 rpm. **4-Speed Manual Transmission** (available in both close and wide ratios) to put you fully in charge of the action. **Sports Console** (separate option) is available with bucket seats, takes both 4-speed and SelectShift Cruise-O-Matic.

New "floating-caliper" **Power Front Disc Brakes** provide high fade resistance even under severe conditions. **Reflective Group** (for GT's) offers competition stripes in black, red, white, blue or gold reflective tape... wheels in reflective silver-gray. **Comfort-Stream Ventilation** gives you luxurious comfort at moderate cost. You ride in quiet comfort, with windows closed, while fresh air is gently circulated throughout the car. Powerful 3-speed blower boosts air circulation, draws in fresh air even when car is standing still. Hot, new **302-cu. in. V-8** (standard on GT's, optional on others) is one of five engine options which range from 302 to 427 cubic inches! **Wide-Oval Tires** provide extra traction with their broader "footprint." (Standard on GT's, available on all except wagons.) Radial Ply Tires (up to 80% longer tread wear). Wide-Oval Radial Ply Tires (combining benefits of the other two) also offered. **SelectShift Cruise-O-Matic**, Ford's famous automatic that's manual when you want it to be, has T-bar shift lever with optional console.

Other options you'll want to consider: **Deluxe Wheel Covers**—pages 7, 8, 10, 12, 14, 16 □ **Styled Steel Wheels**—pages 9, 10 □ **White Sidewall Tires** (shown on all models) □ **Vinyl Roof**—pages 3-4, 12, 14 □ **Full-Width Front Seat** (GT's)—page 5 □ **Power Windows, AM/FM Stereo Radio**—page 6 □ **AM Radio** □ **Bucket Seats and Console** (Fairlane 500 hardtop, fastback, convertible), **Rear Window Defogger, Convenience Group**—page 11 □ **Remote-Control Outside Mirror, SelectAir Conditioner**—page 13 □ **Power Steering**—page 15 □ **Wagon Luggage Rack**—pages 8, 16 □ **Power Doorgate Window** □ **Body Side Molding** (Fairlane)—page 14 □ **Accent Stripes** □ **Rear Seat Radio Speaker** □ **Vinyl Interior Trim** (Fairlane 500's) □ **Two-Tone Paint** □ **Tinted Glass** □ **Visibility Group** □ **Deluxe Seat Belts** □ **Rear Seat Shoulder Belts** □ Plus many others which your Ford Dealer will gladly detail for you.



Sports Tachometer



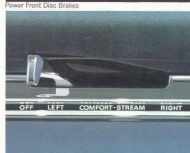
4-Speed Manual Transmission and Console



Power Front Disc Brakes



GT Reflective Group



Comfort-Stream Ventilation



New 302-cu. in. V-8



Wide-Oval Tires (standard on Torino GT's)



SelectShift Cruise-O-Matic and Console



In Fairlane 500's, there are five beautiful ways to save in '68 . . . the Hardtop and Fastback you see here, 4-Door Sedan and Convertible (next page) and the Fairlane 500 Wagon (page 16). It's the widest selection ever, with a model to suit your individual needs and taste.

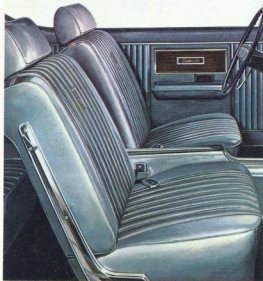
Choose the formal-roofed Hardtop or sleek Fastback. Powerplant is the husky, economical 200-cu. in. Fairlane Six teamed with Synchro-Smooth Drive (fully synchronized to let you downshift to low under way). Full-width seats provide roomy comfort for six. (The Fastback, with 6-passenger roominess, offers more room at a lower price than any other comparable model.) Interiors (your choice of four colors) are handsomely crafted of pleated nylon cloth and leather-smooth vinyl.

The Fastback's "picture" rear window is delicately tinted glass to reduce sun glare. Safety-design door and window regulators, cast hooks and folding front seats that lock in place (and conveniently unlock) with energy-absorbing seat back structure . . . these are a few of the new Ford Motor Company Lifeguard Design Safety Features (see page 17).

Fairlane 500 options let you make the Hardtop or Fastback as rich or sporty as you like. Get the lush bucket seats, console and all-vinyl interior illustrated at the right. Add rear window defogger for clear rearward vision. New Convenience Group combines four lights in one instrument panel dial to remind you to fasten "seat belts," and warn you that there is a "door ajar," or "low fuel" or the "parking brake" is on. Sporty styled steel wheels (shown on the Fastback) or deluxe wheel covers (on Hardtop) add smart touches all their own. And there are literally dozens of other options—shown on page 9 and throughout this catalog—which will help you put your individual stamp on a new Fairlane 500 Hardtop or Fastback.

Fairlane 500 Standard Equipment Highlights

Power Team: 200-cu. in. Fairlane Six and Synchro-Smooth Drive □ Choice of 15 Colors in Super Diamond Lustre Enamel □ 4 Color-Keyed Cloth and Vinyl Upholsteries (hardtop and fastback) □ Full-Width Seats □ Ventless Side Glass (except sedan and wagon) □ Tinted Rear Window (fastback) □ All the Ford Motor Company Standard Lifeguard Design Safety Features (for the complete list of Standard Equipment, see page 17).



Fastback Interior with Optional Bucket Seats, Headrests, Console



New Rear Window Defogger Option



New 4-Signal Convenience Group Option

FAIRLANE 500

There's a lot of Torino excitement in the '68 Fairlane 500's and Fairlanes!



If you favor a 4-door or convertible, just see all that Fairlane 500 has for you!

In the Convertible, all-vinyl trim (choice of four colors) is standard. With bucket seats (the same option available with the hardtop and fastback, page 11) you can choose from an array of four deep-pleated, leather-elegant vinyl trims. Power-operated convertible top in black, blue or parchment is standard; the big rear window is solid safety glass to resist scratching and zips open for straight-through ventilation with the top up.

This year you can have the rich vinyl roof option in black or parchment on the sedan to enhance the luxury of its five standard cloth-vinyl interior choices. And there are three all-vinyl interior options.

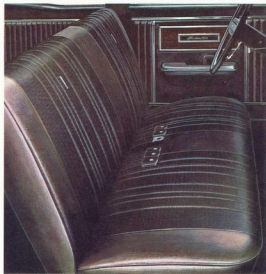
In either the 4-Door Sedan or Convertible you'll have an even finer Fairlane ride for '68... solid, smooth, quiet... spread over the big 116-inch wheelbase with 58-inch treads front and rear for wide-stance stability.

Try the eager power of the new 302-cu. in. V-8 option, or one of the two 350's... or all the way up to the new hydraulic valve-lifter 427-cu. in. V-8 with 390 hp (in Hardtop, Fastback)! SelectShift Cruise-O-Matic... the automatic that's also a manual when you want it to be... is available with all engines, even the 427. 4-speed manual, if you prefer stick-shifting all the time, is available with the 302 and 390 V-8's.

For luxurious comfort anywhere, any time of year, have your Fairlane 500 equipped with SelectAir Conditioning. Here, in one compact, space-saving unit behind the instrument panel, is the answer to summer heat, winter cold and all the subtle variations in between. SelectAir delivers fresh air cleaner, too, filtered free of pollen and dust and comfortably dehumidified. These are just a few of the wonderful things Fairlane 500 has for you in '68.

Fairlane 500 Standard Equipment Highlights

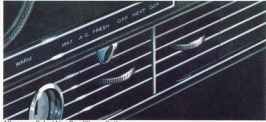
Power Team: 200-cu. in. Fairlane Six and Synchrony Drive □ Choice of 15 Colors in Super Diamond Lustre Enamel □ Color-Keyed Upholstery Choices: 5 Cloth and Vinyl (sedan), 4 All-Vinyl (convertible) □ Full-Width Seats □ Power Top with Glass Rear Window (convertible) □ All the Ford Motor Company Standard Lifeguard Design Safety Features (for the complete list of Standard Equipment, see page 17).



Fairlane 500 4-Door Sedan Interior (one of five color choices)



SelectShift Cruise-O-Matic Transmission Option



All-season SelectAir Conditioner Option

FAIRLANE 500



Would you believe the lowest-priced Fairlane of them all is a hardtop? The very same one as shown at left. (It's yet another better idea for '68 from Ford.) Smart hardtop styling. The luxury touch of ventless side glass. The

In either the hardtop or sedan, you'll get the great thrift of the Fairlane Six and Synchro-Smooth Drive (fully synchronized for clash-free downshifting). You'll get Fairlane's smoother handling, big-car ride, roominess and comfort. You'll like the extra-big and easy-loading 16.2-cu. ft. trunk . . . the big 20-gallon gas tank that fills conveniently from the center.

And there are other better-idea conveniences everywhere you look. Ford's famous reversible keys (they're always right side up). Suspended accelerator pedal (adjusts itself to your foot). "Floating" mirror bonded directly to the windshield. Plus all the new Ford Motor Company Lifeguard Design Safety Features—energy absorbing steering column, safety-design door handles, front seat shoulder belts—all the others listed on page 17.

Everything we've mentioned up to here is standard on Fairlane. Just see what happens when you add a few options. Vinyl roof (as shown on the sedan). The 302-cu. in. V-8, one of the two 390's, or the big new 427 V-8 now with self-adjusting valve lifters (in Hardtop). SelectShift Cruise-O-Matic. Power steering and power front disc brakes (they combine beautifully to make all your driving easier). Comfort-Stream Ventilation or SelectAir Conditioner. AM Radio or AM/FM Stereo Radio. Start with one of these lowest-priced Fairlans and see what kind of swinging economy car you can come up with!

Fairlane Standard Equipment Highlights

Power Team: 200-cu. in. Fairlane Six and Synchro-Smooth Drive □ Choice of 15 Colors in Super Diamond Lustre Enamel □ 3 Color-Keyed Cloth and Vinyl Upholsteries □ Full-Width Seats □ Ventless Side Glass (hardtop) □ Suspended Accelerator Pedal □ Reversible Keys □ Center-Fill Fueling □ Low-Sill Trunk □ All the Ford Motor Company Standard Lifeguard Design Safety Features (for the complete list of Standard Equipment, see page 17).



Power Steering Option

Power Front Disc Brakes Option



Fairlane 4-Door Sedan Interior (one of three color choices)

FAIRLANE



Standard Equipment

FAIRLANE 2-Door Hardtop and 4-Door Sedan: Power Team—200-cu. in. Fairlane Six and Synchro-Smooth Drive (fully synchronized 3-spd. man. trans.) □ Choice of 15 Super Diamond Lustre Enamel Colors □ Choice of Three Cloth-Vinyl Interiors □ Color-Keyed, Vinyl-Coated Rubber Floor Mat □ Full-Width Seats with Foam-Padded Cushions □ "Floating" Inside Mirror □ Courtesy Lighting □ Heater-Defroster □ Foot-Operated Parking Brake □ Cigarette Lighter, Ash Trays □ Reversible Keys, "Keyless" Locking □ Suspended Accelerator Pedal □ Ventless Side Glass (hardtop) □ Low-Sill Trunk □ Center-Fill Fueling □ Ford's Famous Twice-a-Year Maintenance (back cover) □ Plus all the Ford Lifeguard Design Safety Features listed opposite.

FAIRLANE 500 2-Door Fastback, 4-Door Sedan, 2-Door Hardtop, Convertible: Power Team—200-cu. in. Fairlane Six and Synchro-Smooth Drive □ Plus all Fairlane equipment with these variations: Interior Choices—5 Cloth-Vinyl Trims (sedan), 4 (fastback, hardtop), 4 All-Vinyl Trims (convertible) □ Color-Keyed Carpeting □ Tinted Glass Rear Window (fastback) □ Convertible Features: 5-Ply Vinyl Power-Operated Top □ Tempered Safety Glass Rear Window □ Stretch-Taut, Color-Keyed Boot with Hidden Fasteners □ Easy-Action Top Latches.

TORINO 2-Door Hardtop, 4-Door Sedan: Power Team—200-cu. in. Fairlane Six and Synchro-Smooth Drive □ Plus all Fairlane and Fairlane 500 equipment with these variations: Interior Choices—8 Luxury Cloth and Vinyl Trims □ Simulated Wood Paneling on Instrument Panel □ Electric Clock □ Distinctive "Torino" Moldings and Medallions □ Torino Matte Black Grille □ Deluxe Wheel Covers.

TORINO GT 2-Door Fastback, 2-Door Hardtop, Convertible: Power Team—302-cu. in. V-8 and Synchro-Smooth Drive □ Plus all previously listed equipment with these variations: Interior Choices—7 All-Vinyl Trims □ Individually Adjustable Front Bucket Seats □ Unique GT Stripes and Identification Plaques □ Styled Steel Wheels □ Wide-Oval White Sidewall Tires.

FAIRLANE WAGONS (Torino Squire, Fairlane 500 and Fairlane Wagon): For Standard Equipment and all other facts on Fairlane Wagons, ask your Ford Dealer for a copy of the 1968 Ford Wagons Catalog.

Standard Ford Motor Company Lifeguard Design Safety Features

Ever since there have been Fords on the American Road, the safety of the people who drive and ride in them has been a primary concern of thousands of people at Ford Motor Company—driving millions of miles on the test track, working millions of man-hours in the laboratory. Some of the latest results of their work are seen in the Ford Motor Company Lifeguard Design Safety Features listed here.

Lifeguard Design Safety Features help reduce the likelihood of injury in case of an accident, but you can accomplish the most important job of all—preventing an accident. By obeying traffic laws at all times and developing alert, defensive driving habits, you can best protect yourself and your family against unsafe conditions on the road.

Every 1968 Torino and Fairlane includes: Dual Hydraulic Brake System with Warning Light □ Glare-Reduced Instrument Panel Padding, Windshield Wiper Arms, Steering Wheel Hub, Horn Ring, Rearview Mirror and Windshield Pillars □ Energy Absorbing Steering Column and Steering Wheel □ Energy Absorbing Arm Rests and Safety-Designed Door Handles □ Front and Rear Seat Belts with Front Outboard Retractors □ Turn Indicators with Lane-Change Signal Feature □ Inside Day/Night Yield-Away Windshield-Mounted Rearview Mirror □ Energy Absorbing Instrument Panel with Padding □ Padded Safety Sun Visors □ Padded Windshield Pillars □ Two-Speed or Variable Speed Windshield Wipers □ Windshield Washers □ Double-Thick Laminated Safety Glass Windshield □ Double-Yoke Safety Door Latches and Safety Hinges □ Positive Door Lock Buttons □ 4-Way Emergency Flasher □ Backup Lights □ Side Marker Lights or Reflectors □ Energy Absorbing Front Seat Backs with Padding □ Self-Locking Folding Seats □ Shoulder Belts for Outboard Front Seat Passengers except convertibles □ Vehicle Structure Designed to Limit Steering Column Displacement □ Safety-Designed Coat Hooks □ Safety-Designed Window Regulator Knobs □ Safety-Designed Radio Control Push Buttons □ Padding on Back of Second Seat in Station Wagon □ Outside Rearview Mirror, Driver's Side □ Safety Rim Wheels and Load-Rated Tires □ Corrosion-Resistant Brake Lines □ Uniform Transmission Shift Quadrant.

FAIRLANE WAGONS

Better ideas are everywhere in Torino and Fairlane Wagons for '68. New ideas in wagon luxury in the Torino Squire (page 8). New ideas in convenience and hard-working utility as exemplified by the Fairlane and Fairlane 500 Wagons you see here.

The amazing Magic Doorgate that opens out for easy access and down for cargo is standard. Second seats convert quick as a wink. Interiors are all-vinyl . . . tough-wearing and good-looking. Cargo space takes loads over 9 feet

long with the Doorgate down . . . up to 93.4-cu. ft. total volume including the lockable, concealed compartment of 8.2 cu. ft.

Options include three V-8's (up to 390 cu. in.), Comfort-Stream Ventilation, AM/FM Stereo Radio as well as "strictly wagon" features like Power Doorgate Window, handsome luggage racks and many more. There's much more to tell about new Torino and Fairlane Wagons. You'll find it all in the 1968 Ford Wagons Catalog at your Ford Dealer's.

Torino GT



Fastback



3-Door Hardtop



Convertible



3-Door Hardtop



4-Door Sedan



Square



Fastback



3-Door Hardtop



Convertible



4-Door Sedan



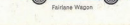
Fairlane 500 Wagon



3-Door Hardtop



4-Door Sedan



Fairlane Wagon

1968 Torino & Fairlane Specifications

This catalog will tell you all about 11 models of the new Torino and Fairlane. The three station wagons are in a separate catalog of their own. For complete information on these versatile, hard-working 99's from Ford, ask your Ford Dealer for a copy of the Ford Wagons Catalog. If you're interested in trading in your old Torino or Fairlane, your Ford Dealer has another booklet which is yours for the asking. It's called the 1968 Ford Car & Truck Recreational Exchange. Station wagon in length, it includes numerous illustrations, maps and suggestions about trailer towing with a '68 car from Ford.

Color and Upholstery Selections Pick your favorite color from 15 brilliant Super Diamond Lustre Enamel single tones or 23 two-tone combinations. Color-keyed to these paint choices is a wide array of upholstery choices in rich cloth and vinyl or leather-look vinyl. Your Ford Dealer's color and upholstery book will show you with paint and trim samples how your favorite combination will look with the color of your choice.

Engine (see chart for availability): 200-cu. in. Fairlane S-115 hp; 302¹/₂ bore x 3.15" stroke; 8.8 to 1 comp. ratio; 7 main bearings; rpm; fuel; single-barrel carb.; auto. choke; self-adj. valves; oil cap's, incl. filter, 4 1/2 qt.

302¹/₂ cu. in. V-8—210 hp; 4.00" bore x 3.00" stroke; 9.0 to 1 comp. ratio; rpm; fuel; 2-barrel carb.; auto. choke; self-adj. valves; oil cap's, incl. filter, 5 qt.

396-cu. in. Thunderbird V-8—265 hp; 4.58" bore x 3.38" stroke; 9.5 to 1 comp. ratio; rpm; fuel; 3-barrel carb.; auto. choke; self-adj. valves; oil cap's, incl. filter, 5 qt.

396-cu. in. Thunderbird Special V-8—355 hp; Same specifications as 395-hp Thunderbird V-8, except 10.5:1 comp. ratio, 4-barrel carburetor. Premium fuel required. Dual exhausts std.

427-cu. in. Cobra 427 V-8—390 hp; 4.25" bore x 3.78" stroke, 10.0 to 1 comp. ratio; 4-barrel carb.; 89-46, valves; available for 2-door Hardtop and Fastback models. Included is equipment package with a 60-hp electric power front disc brakes, GT handling suspension, FR 70-14 wide-oval radial ply tires, shock-absorbing fcn. extra cooling radiator, 80 amp-hr battery, heavy-duty 2.25 to 1 ratio rear axle.

Engine Features: 8000-mile (or 6-month) full-life oil filter; hydraulic valve lifters; dry element air cleaner, year-round 190° thermostat; 15-watt electrical system; 45 amp. alternator; 54 plate battery; 45-amp-hr wear-resistant ignition with constant-resistance wiring; oil-cooled breaker points; positive-engagement starter; fully aluminum mufflers (dual mufflers of aluminum and stainless steel).

12 Fairlane Power Tests

ENGINES	TRANSMISSIONS	
	TORINO GT	OTHER MODELS
200-cu. in. Fairlane S ¹ 302-cu. in. V-8	S,C,C	S,C,C
302-cu. in. Thunderbird V-8	S,C,C	S,C,C
396-cu. in. Thunderbird Spec. V-8	S,C,C	S,C,C
427-cu. in. Cobra 427 V-8	C	C

¹Std. engine oil multi-grade Torino GT '68. Transmission as indicated, all others optional. 1968 engine oil Torino GT '68, available only after 4/1/68. Transmission Key—S—Synchro-Smooth Drive (Std. synchro-smooth 3-speed manual); C—Cruise-Shift Drive. Ford Sales Manual.

Clutch and Manual Transmission (see chart for availability): Clutch disc diameter 9" with 5 1/2" x 10" V-8 and 3-speed transmission, 10 1/2" with 302 V-8 and 4-speed transmission, 11" with 302 V-8, Synchro-Smooth Drive Transmission; synchro-smooth manual shifting in all three forward gears. Standard "H" shift pattern with lever on steering column. 4-Speed Manual Transmission, lock-to-lock transmission, fully synchronized in the four forward gears with R-synchronized stick shift.

SelectShift Cruise-O-Matic Drive (see chart for availability): Lets you drive fully automatic or shift manually through the gears. Three forward speeds, one reverse. Effective engine braking in low gear (1) for better control on grades and hill driving. Quadrant speed P-R-N-D-2-1.

Rear Axle: Semi-floating type with deep-offset hypoid gears. Shock-absorbers have five springs with three bearings. V-8 coil-over. Disc-hatchard forged shafts with permanently lubricated wheel bearings. Fuel Injection: Split-point type with coil springs split-mounted on upper rails. Angle-Posed for anti-dive control, 20.000-mile (or 3-year) tube intervals. Strut-braked lower arms. Shock absorbers have all-weather fluid for better year-round ride control.

Rear Suspension: Asymmetrical design with rear axle located forward of spring center for anti-dive and lateral resistance on braking and takeoff. Leveling bar, leaf-type springs with wide spring base for more uniform ride center. All-weather shock absorber fluid for more uniform ride center.

Steering: Recirculating ball type steering gear provides easy handling. Linkage system lubricated for life. Overall steering ratio 20.4 to 1. Turning radius 11.4 ft. Possible steering shaft coupling to reduce road shock to steering wheel, ratio 21.8 to 1.

Brakes: New dual hydraulic brake system with dual master cylinder, separate lines to front and rear brakes. Brakes adjust automatically when applied while car is moving backward. 4-wheel disc brakes, proved for extra cooling. Total lining area, sedans and hardtops—153 sq. in., convertibles—172 sq. in., 300 V-8 sedans and hardtops—122 sq. in.

Tires: Uniform pressure design, 4-ply rating blackwall tubeless with Tynex main cord. Safety-type rims. Basic size: 1.38 x 14. Tire sizes are determined in part by special equipment such as air conditioning. See your Ford Dealer for complete details.

Basic Dimensions & Capacities

Length—201.3". Width—74.5". Wheelbase—119". Track (front/rear)—58.5"/65.7". Height—57" (sedans), 53.5" (hardtop), 65.7" (convertible). Trunk Luggage Volume: 50, 11.5—16.2, 17.0 (fastback), 121 (convertible), Fuel—30 gal.

Approximate Curb Weights

TORINO GT Fastback 3068 lb., Hardtop 3348 lb., Convertible 3008 lb.; TORINO GT 3-Door Hardtop 3118 lb., 4-Door Sedan 3108 lb.; Fairlane 500 Fastback 3126 lb., Hardtop 3112 lb., Convertible 3078 lb., 4-Door Sedan 3038 lb.; Fairlane Hardtop 3112 lb., 4-Door Sedan 3078 lb.

"Better Ideas"

Throughout the '68 Torinos and Fairlane are Ford's better ideas that mean more driving pleasure to you... more in resale value at trade-in. Better ideas include: double-sided fenders and "honeycomb" fender; suspended accelerator brake and clutch pedals; step-on parking brake; center-fill fueling; 20-gallon fuel tank; ventless side glass (hardtop and convertible); 20-psi automatic convertible tire; "floating" mirror-view mirror; lighted ignition and SelectShift Cruise-O-Matic quadrant, parallel-align windshield wipers, padded circuit instrument cluster, "see-it" 1000w 70 mph speedometer, in-line filter system, 5-position front door checks, counterbalanced hood and rear deck lid and many, many more.

Twice-a-Year Maintenance:

'68 Torinos and Fairlane are designed to go 6,000 miles (or 6 months) between oil changes and minor chassis lubrications; 30,000 miles (or 30 months) between major chassis lubrications. Other '68 service savers include 24,000-mile (or 2-year) engine coolant/antifreeze, self-lubricating ball bearings, long-life Full-Flow, 100,000-mile oil filter, acid-corrosion-resistant aluminum mudflap and galvanized major underbody parts. The '68 Fairlane adds 1500-mile service S¹ just good reason to see it! Get the best-of-both-worlds Ford Dealer's 146-plate combined mechanics and special tools add up to the greatest service combination available for your Torino or Fairlane.

Prices: All optional equipment and accessories, illustrated or referred to in this catalog, optional, available on all models. For the price of the Torino or Fairlane with the equipment you desire, see your Ford Dealer.

The illustrations and product information contained herein were current at the time this publication was approved for printing. However, in order to continue to offer the finest automotive products, Ford Motor Company reserves the right to change specifications, designs, models or prices without notice and without liability for such changes.

DICK MASHETER FORD, INC.
2800 EAST MAIN ST.
COLUMBUS, OHIO 43209