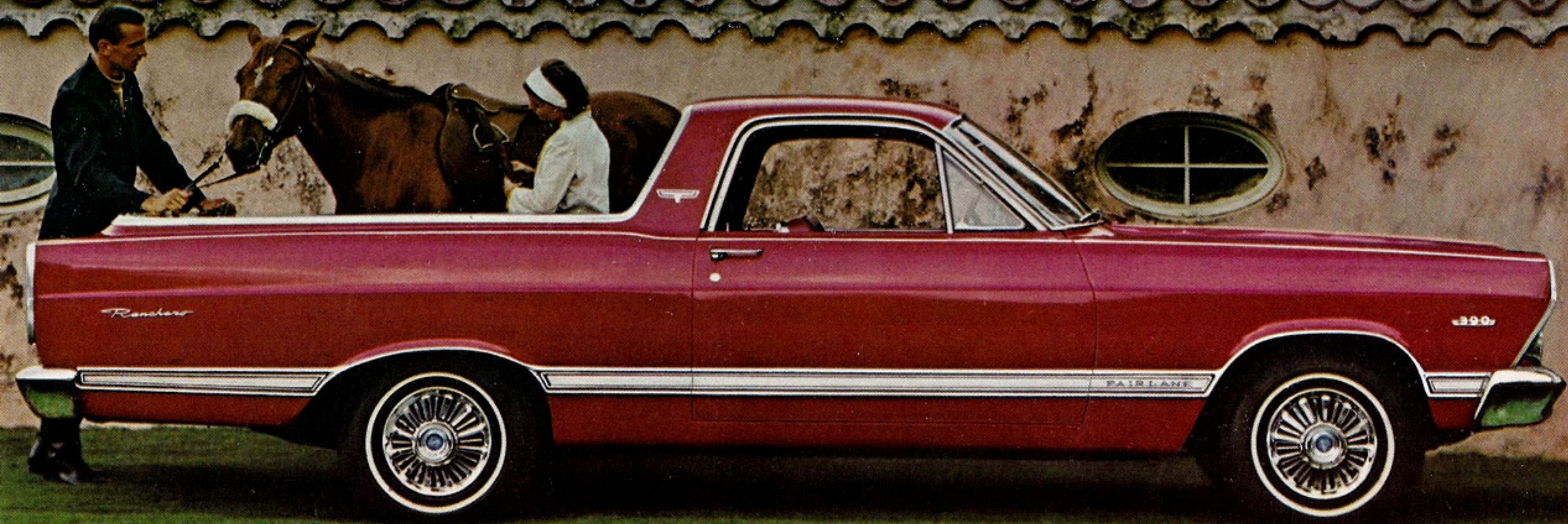


**1967
FORD**

Fairlane Ranchero

FAIRLANE / FAIRLANE 500 / FAIRLANE 500/XL



THREE COMPLETELY NEW FAIRLANE RANCHEROS FOR TOWN AND COUNTRY!



1967 FAIRLANE RANCHEROS are the most luxurious, versatile, high performing pickups ever offered for business and family use. You can choose your own brand of style, comfort and convenience from three Rancheros: the low-priced Fairlane, the elegant Fairlane 500, or the sporty Fairlane 500/XL with bucket seats. Big choice of get-up-and-go from four total performance power packages . . . the economy 200-cu. in. Six is teamed with a 3-speed manual transmission as standard equipment. (SelectShift Cruise-O-Matic also available.) The snappy 289-cu. in. V-8 or a sizzling 390-cu. in.

V-8 with 2- or 4-venturi carburetor can be combined with a 3- or 4-speed manual transmission or SelectShift Cruise-O-Matic which lets you drive fully automatic or shift manually through the gears. And should you need more traction over soft or slippery roads, a rear axle with limited-slip differential is offered with all engine/transmission combinations. Plenty of comfort and conveniences are available, too! From air conditioner to a Stereo-Sonic Tape System, many options are offered to let you equip your Fairlane Ranchero as you like it!



FAIRLANE RANCHERO

FAIRLANE 500 RANCHERO

FAIRLANE RANCHERO . . . You can choose from 12 exterior colors and 3 interior colors (red, blue or parchment) and find a Fairlane Ranchero to please you and your favorite passengers. A highly styled, full-width seat is upholstered in cane-pattern vinyl trim with crinkle-finish bolsters to reflect both luxury and comfort. Standard equipment also includes a durable, color-keyed floor mat, courtesy light door switches, ash tray, lockable glove box, visibility package (remote-control left outside mirror, day/night inside mirror), bright horn ring, arm rests, and many bright exterior trim items such as new body side molding.

FAIRLANE 500 RANCHERO . . . Handsome and luxurious inside and out best describes the Fairlane 500 Ranchero! Standard equipment includes in addition to that shown for Fairlane Ranchero: deep-pile, color-keyed wall-to-wall carpeting, attractive instrument panel applique, electric clock, trim panel for rear of cab and a full-width seat upholstered in red, blue, parchment or ivy gold pleated vinyl trim color-keyed to 13 exterior colors. To add to Ranchero elegance, the Fairlane 500 has bright-metal wheel lip moldings and lower body side moldings, bright door window frames, body side paint stripes and bright wheel covers.

FAIRLANE 500/XL RANCHERO . . . The XL is the ultimate in sport pickups. Standard equipment includes all the interior and exterior refinements of a Fairlane 500 plus bucket seats, center console and special trim items. The contoured bucket seats are full foam-cushioned for solid comfort, pleated for luxury, and upholstered with rosette-patterned vinyl trim in red, blue, parchment or black and color-keyed to 15 exterior colors. The center console accommodates a 3- or 4-speed manual shift lever or a new optional 3-speed SelectShift Cruise-O-Matic transmission for complete manual control or fully automatic shifting.



FAIRLANE 500/XL RANCHERO INTERIOR



FAIRLANE 500 RANCHERO INTERIOR



FAIRLANE RANCHERO INTERIOR

'67 FAIRLANE RANCHEROS ...DESIGNED TO BE VERSATILE FOR WORK OR PLAY!

'67 Fairlane Rancheros . . . look and ride like a car, work like a pickup! The cargo compartment has 39 cubic feet of loadspace. Maximum load is up to 1,250 pounds. Easy to load or unload with a single, center tailgate latch and counterbalanced tailgate . . . only one hand is needed with a minimum of opening or closing effort. Big choice of power, too! A 200-cu. in. Six for best economy; a 289-cu. in. V-8 for more power and a 390-cu. in. V-8 with 2- or 4-venturi carburetor for top performance. And the long list of optional equipment allows you to customize your Ranchero to your exact needs.

FORD MOTOR COMPANY LIFEGUARD-DESIGN RANCHERO SAFETY FEATURES are standard on all Fairlane Rancheros and include a dual hydraulic brake system with warning light, front seat belts and retractors, impact-absorbing steering wheel with deep-padded hub, padded instrument panel, padded windshield pillars, double-yoke safety door latches and safety hinges, outside mirror, day/night inside mirror with shatter resistant flexible-backed glass and breakaway support, windshield washers, two-speed windshield wipers, padded sun visors, thick laminate safety plate glass windshield, backup lights, 4-way emergency flasher, front seat shoulder harness anchors, tire safety rim, corrosion-resistant brake lines, safety-designed instrument panel and controls and many others.

Exterior Colors: Raven Black, Wimbledon White, Candy-apple Red, Arcadian Blue, Nightmist Blue, Sauterne Gold (500 & 500/XL), Springtime Yellow, Clearwater Aqua (500/XL), Dark Moss Green, Vintage Burgundy, Brittany Blue, Frost Turquoise (500/XL), Lime Gold, Pebble Beige and Burnt Amber. Body side contour line paint stripes for Fairlane 500 and Fairlane 500/XL are White, Black or Red.

Interior Colors: Parchment, red or blue interior vinyl colors are available on Fairlane; parchment, red, blue or ivy gold interior vinyl colors are available on Fairlane 500; and parchment, red, blue or black interior vinyl colors are available on Fairlane 500/XL.

Brakes: Dual safety hydraulic system, self-adjusting, front—10" x 2½", rear—10" x 2"; and foot-operated parking brake.

Clutch: Single-plate torsion-disc clutch, aluminum housing; 9-inch diameter with 200 Six, 10-inch with 289 V-8 and 11-inch with 390 V-8's.

Front Suspension: Independent, angle-poised, ball-joint type with shock absorbers and coil springs. Spring capacity @ pad: 1,240 lb. w/Six, 1,410 lb. w/289 V-8, 1,570 lb. w/390 V-8.

Rear Suspension: Variable-rate leaf springs with anti-friction inserts and shock absorbers. Spring capacity @ pad: 990 lb.

Tires: Standard—7.35 x 14 4PR. Optional—7.75 x 14 4PR and 8PR. Whitewalls optional with all sizes.

Options: Alternator—42 or 55 ampere, Battery—66 plate, 55 amp-hr, Brakes—7½" dia. Vacuum Booster or Front Disc Brakes including Vacuum Booster, Electric Clock (standard in 500 and 500/XL), Extra Cooling Equipment (incl. with air conditioner), Heavy Duty Suspension Package (incl. HD shock absorbers, front and rear and 1165-lb. rear springs), Linkage-type Power Steering, Push-Button Radio and Antenna, Stereo-Sonic Tape System (N.A. w/4-spd. transmission and air conditioner), Deluxe Simulated Wood Grain Steering Wheel, SelectAire Conditioner, Shoulder Harness for driver and passenger, Tinted Glass (windshield or all-around), Tachometer, RH Stationary Outside Chrome Mirror, 4-Spd. Transmission, SelectShift Cruise-O-Matic, Limited Slip Rear Axle, Wheel Covers (Fairlane Ranchero), Deluxe Wheel Covers, Bright-Finish Styled Steel Wheels.

ENGINE SPECIFICATIONS, TRANSMISSIONS AND AXLES	200 SIX	289 V-8 (2V)	390 V-8 (2V)	390 V-8 (4V)
Max. Gross HP (bhp @ rpm)	120 @ 4400	200 @ 4400	270 @ 4400	320 @ 4800
Max. Gross Torque (lbs-ft @ rpm)	190 @ 2400	282 @ 2400	403 @ 2600	427 @ 3200
Displacement (cu. in.)	200	289	390	390
Bore & Stroke (in. x in.)	3.68 x 3.13	4.0 x 2.87	4.05 x 3.78	4.05 x 3.78
Compression Ratio (to 1)	9.2	9.3	9.5	10.5
Transmissions	3-speed manual Cruise-O-Matic	3- or 4-speed manual Cruise-O-Matic	3- or 4-speed manual Cruise-O-Matic	3- or 4-speed manual Cruise-O-Matic
Axle Ratios (to 1)	3.25, 3.50*	3.25†, 3.00*	3.25, 3.00*‡	3.25, 3.00*‡

*With limited-slip differential †3.00 only w/Cruise O-Matic ‡3.00 required w/air conditioners

FORD MOTOR COMPANY'S "3-Point Warranty Plan"

1. 5-year or 50,000-mile warranty on the powertrain. 2. 2-year or 24,000-mile warranty on the complete vehicle. 3. Only one dealer certification per year regardless of how many miles you drive.

Ford Motor Company warrants to Fairlane Ranchero owners that their selling Ford dealer (or if the owner is traveling or has moved, any Ford dealer) using genuine new Ford or Ford Authorized Reconditioned parts, will repair or replace, free of charge including related labor, the following parts which are found, in normal use and within the following time and mileage limits (whichever comes first), to be defective in either workmanship or materials: (a) any part within 24 months or 24,000 miles, and (b) Power Train parts within 5 years or 50,000 miles.

Power Train parts include: engine block, head and internal parts, water pump, intake manifold, transmission case and internal parts, torque converter, driveshaft, universal joints, differential, and driving axle, and rear wheel bearings. Related items such as ignition, electrical, cooling, fuel and brake systems, engine or transmission controls or linkages, and clutch assembly are excluded. The owner is required to obtain certain maintenance services* and, every 12 months, a written certification from a Ford dealer that he has presented evidence that such services have been performed.

The warranty does not apply to tires or tubes (adjustments are provided by tire companies), or to normal maintenance services or normal replacement of service parts such as filters, spark plugs, ignition points, wiper blades or brake or clutch linings, or to normal deterioration of soft trim and appearance items.

The warranty applies to vehicles normally operated in the U.S.A. and Canada.

*Every 6 months or 6,000 miles: change oil and oil filter; clean air cleaner, air filter and oil filler cap; check axle lube and transmission oil levels.

Every 12 months or 12,000 miles: replace air filter on closed crankcase ventilation systems; clean emission system and carburetor spacer; replace emission control valve and thermostat air filter.

Every 24 months or 24,000 miles: change engine coolant and check radiator hoses.

Every 36 months or 36,000 miles: replace air filter on open crankcase ventilation systems; adjust automatic transmission bands.

The specifications contained herein were in effect at the time this folder was approved for printing. Ford Division of Ford Motor Company reserves the right to discontinue models at any time or change specifications or design without notice and without incurring obligation. All options and accessories illustrated or referred to as optional or available in this folder are at extra cost. For the price of the model with the equipment you desire, see your Ford Dealer.

EVERY 1967 FAIRLANE RANCHERO has been designed and quality-built to provide safer, more dependable service. Ford Motor Company Lifeguard-Design Fairlane Ranchero safety features are standard equipment in every 1967 Fairlane Ranchero. Safety depends upon the proper operation and maintenance of a vehicle . . . and use of the safety equipment provided.



FAIRLANE 500 RANCHERO



FAIRLANE 500/XL RANCHERO

YOU'RE AHEAD IN A FORD ALL THE WAY!

