

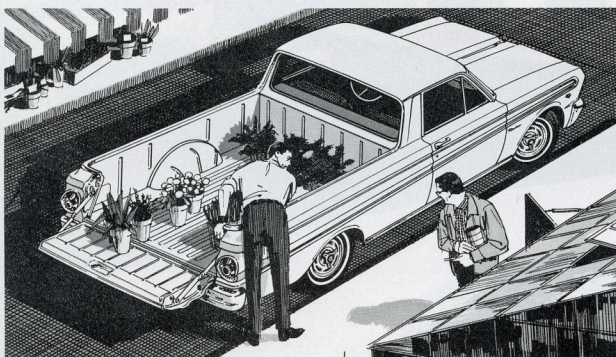
FALCON RANCHERO, SEDAN DELIVERY

1965 FORD TRUCKS

NEW PERFORMANCE AND SMART STYLING FOR TOWN AND COUNTRY



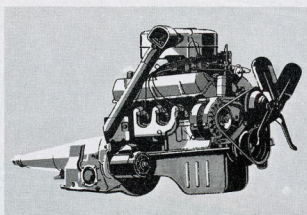
FALCON RANCHERO...FOR TOWN AND COUNTRY!



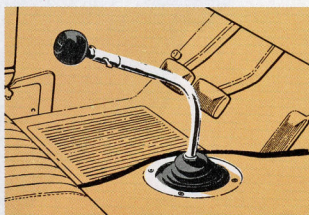
The 1965 Falcon Ranchero is the budget-priced prestige pickup for town and country. It's designed for people on the go, people who want car comfort, beauty and utility. The new Ranchero features a host of improvements, including a choice of four more powerful and economical engines; a new 3-speed dual range automatic transmission; new economical rear axle gear ratios; crisp, clean exterior and interior styling, and improved handling. The Ranchero combines 800-lb. load capacity with all the comfort, style and economy of a Falcon car. Driving a Ranchero is a pleasure. And speaking of pleasure—the Falcon Ranchero is just about perfect for getting to your favorite recreation.

NEW POWER... SIX OR V-8! TAKE YOUR PICK!

Four great engines are available for '65. The popular 170-cu. in. Six, standard this year, and the rugged 200-cu. in. Six have been improved for better performance and greater economy. The sizzling 289-cu. in. V-8 engines are brand new!



Pair one of the new engines with an all-new 3-speed dual range automatic transmission, a standard 3-speed transmission or a fully synchronized 4-speed "four-on-the-floor" manual with a V-8, and you've got a winning combination.



Ford Engines are Quality-Built!

- Hydraulic valve lifters result in quieter running engines and less frequent valve adjustments.
- Chrome-faced top piston ring (289 V-8) reduces ring wear, scuffing and engine break-in time, retains compression longer.
- Integral valve guides give lower valve-operating temperatures, reduce warping, and increase stem and guide life.
- Aluminized intake and austenitic steel exhaust valves are more corrosion-resistant and deposit-free, last longer and require less maintenance.
- Seven main bearing crankshaft in 200 Six provides long life and smooth operation because of better distribution of bearing loads.

YOUR CHOICE OF SIX OR V-8 POWER	170 SIX (Std.)	200 SIX (Opt.)	289 V-8 (Opt.)	289 V-8 (4V) (Opt.)
Max. Gross HP @ RPM	105 @ 4400	120 @ 4400	200 @ 4400	225 @ 4400
Max. Gross Torque @ RPM	158 lbs.-ft @ 2400	190 lbs.-ft @ 2400	282 lbs.-ft @ 2400	305 lbs.-ft @ 3200
Bore and Stroke	3.50" x 2.94"	3.68" x 3.13"	4.0" x 2.87"	4.0" x 2.87"
Carburetor	1-Venturi	1-Venturi	2-Venturi	4-Venturi

NEW PERFORMANCE

Ranchero features improved performance for '65. Four great engines and 3- or 4-speed transmissions, including the all-new 3-speed dual range Cruise-O-Matic, give you a performance choice from smooth and eager to sizzling hot. Whatever your choice, you'll get fine performance for your money!

NEW COMFORT

New seats, materials, trim panels and instrument cluster are representative of improvements in the 1965 Ranchero that give you an added measure of carlike comfort and convenience. Optional bucket seats provide that extra touch of luxury with sports flair to please the most exacting.

NEW RELIABILITY

A new cooler-operating, longer-life 45 ampere-hour battery and a new sealed-for-life 38-ampere alternator are standard on the 1965 Ranchero. Also, more powerful engines, synchronized manual and automatic transmissions, self-adjusting brakes and long-leaf rear springs give you top reliability.

NEW HANDLING EASE

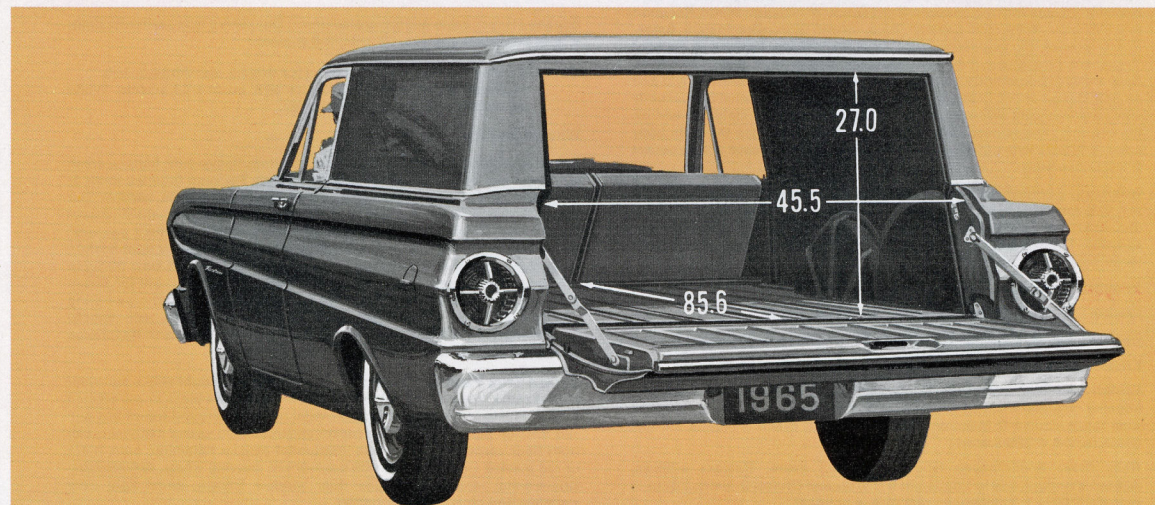
Ranchero gives you new handling ease. Steering has been redesigned for less steering effort and improved stability with V-8 engine installations. With optional power steering, a new gear ratio requires less steering wheel movement for turning.

NEW STYLING

Ranchero has been restyled to accent its sleek, clean, handsome appearance. New grille, side moldings, headlight trim and taillight treatment highlight Ranchero's outward appearance, while new interior features combine to make Ranchero a truly fine town and country vehicle.

AND RANCHERO STILL GIVES YOU THE SAME GREAT ECONOMY!

FALCON SEDAN DELIVERY



The '65 Falcon Sedan Delivery is the closed body running mate of the Ranchero. With carlike styling, comfort and driving ease, it is designed to haul up to 700 pounds. The Sedan Delivery has 27 sq. ft. of flat cargo floor (7 ft. long) and 78 cu. ft. of space that is weather-protected, lockable and readily accessible from the front seat or tailgate. The tailgate window can be lowered manually or electrically (electric control is optional) for ventilation or access to the tailgate latch. A single center tailgate latch lowers the tailgate quickly and easily . . . only one hand does it. Rear load opening is 45½ in.

wide and 27 in. high to take in fair-sized packages or equipment. Loading is easy because of the low floor height—23 inches when loaded, 26½ inches when empty. The floor is constructed of steel and weather-sealed plywood with longitudinal steel skid strips that ease the sliding of heavy packages in and out. All main underbody structural members are heavily galvanized for protection against rust and corrosion. If your business requires a prestige vehicle for the quick delivery of small loads and you want the protection of a closed body, the 1965 Sedan Delivery is ideal for you.

COMFORT AND STYLE OF FALCON INTERIORS

1965 Falcon Ranchero and Sedan Delivery offer all the comfort and style of 1965 Falcon passenger cars! The deep-cushioned seat holds three in comfort. Standard interior trim is Palomino vinyl. Arm rests, door panels, cowl sides and steering wheel are in matching color. Sun visors are white crush-grained hardboard. A distinctive new instrument panel, modern arm rests, seats and trim panels add to the appearance of the handsome new cab. Deluxe cabs offer a choice of black or red (plus Palomino or blue for Ranchero) vinyl upholstery with matching bolsters and steering wheel, color-keyed to exterior paint. All cabs are equipped with sound-deadening headliners and are thoroughly insulated for added driver comfort. Plenty of ventilation gives you all-seasons comfort. The Cowl-Aire ventilation system air intake is located high on top of the cowl, above the level where exhaust fumes and road dust are most concentrated. Fresh air flows into the interior through individually controlled vent openings at left- and right-hand sides for complete cooling. Bucket seats are available in both standard and deluxe Rancheros.

SPECIFICATIONS

Exteriors: Standard equipment includes chrome front and rear bumpers, two taillights, dual electric windshield wipers, dual electric horns, tailgate steerhead ornament (Ranchero only), and directional signals, plus bright-metal windshield molding, roof drip moldings, taillight trim rings, and hub caps. Sedan Delivery also has bright-metal belt line moldings. Solid colors available for standard models are: Raven Black, Wimbledon White, Rangoon Red, Vintage Burgundy, Caspian Blue, Silver Blue, Champagne Beige, Prairie Bronze, Dynasty Green, Ivy Green, Phoenician Yellow and Twilight Turquoise. In addition, Tropical Turquoise, Honey Gold and Silversmoke Gray are available with Deluxe Trim Package. A special two-tone paint and ornamentation option is available on Ranchero only and includes dual body side moldings with Wimbledon White paint between the moldings and on the cab roof. Red is used between the moldings only when the main body color is White. This option is available with any of the above colors except Silversmoke Gray.

Interiors: Standard equipment includes arm rest (left side Sedan Delivery, both sides Ranchero), dome light, rearview mirror, spare tire and wheel, sun visor (left side Sedan Delivery, both sides Ranchero), dispatch box, ash tray, Double-Grip door locks, Lifeguard steering wheel, and bright-metal horn ring.

Engine: 105-hp Six—170-cu. in. displacement.

Engine: (optional) 120-hp Six—200-cu. in. displacement.

Engine: (optional) 200-hp V-8—289-cu. in. displacement (2-Venturi).

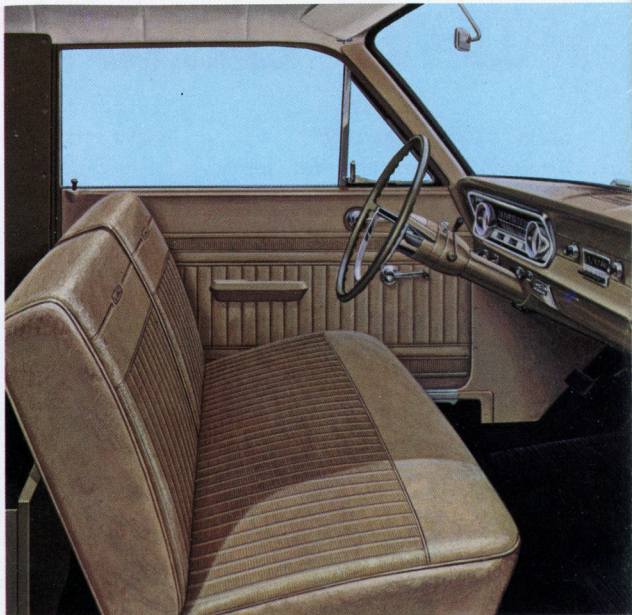
Engine: (optional) 225-hp V-8—289-cu.in. displacement (4-Venturi).

Clutch and Transmission: Single-plate cushion-disc clutch, aluminum housing. Manual 3-speed synchronized transmission. Optional: 3-speed dual range Cruise-O-Matic and 4-speed manual synchronized in all four gears (w/V-8 engines only).

Rear Axle: Semi-floating type with hypoid gears. **Ratios:** w/Sixes, 3.50 to 1 standard, 3.20 to 1 optional; w/200 Six and Cruise-O-Matic, 2.83 to 1; w/V-8's, 2.80 to 1. Limited-slip rear axle is optional.

The specifications contained herein were in effect at the time this folder was approved for printing. Ford Division of Ford Motor Company reserves the right to discontinue models at any time or change specifications or design, without notice and without incurring obligation. All options and accessories illustrated or referred to as optional or available in this folder are at extra cost. For the price of the model with the equipment you desire, see your Ford Dealer.

24,000-MILE (OR 24-MONTH) WARRANTY—Ford Motor Company warrants to truck owners as follows: That for 24,000 miles, or for 24 months, whichever comes first, free replacement, including related labor, will be made by Ford Dealers of any part with a defect in workmanship or material. Tires are not covered by the warranty; appropriate adjustments will be made by tire companies. Owners will remain responsible for normal maintenance services; routine replacement of parts such as filters, spark plugs, ignition points, wiper blades, brake or clutch linings, and for normal deterioration of soft trim and appearance items. The warranty referred to herein is applicable to products sold in the U.S.A. and in certain neighboring areas.



Front Suspension: Angle-poised, ball-joint type with 4-in. diameter coil springs and shock absorbers.

Rear Suspension: Variable-rate leaf springs with antifriction inserts and shock absorbers.

Brakes: Dependable double-sealed drum; Duo-Servo type; self-adjusting; 9" with 6-cylinder engines, 10" with V-8 engines.

Tires: Standard: 6.95 x 14 4PR on 14 x 4½J wheels with Sixes or V-8. Optional (with V-8 only): 7.35 x 14 4PR on 14 x 5J wheels. White sidewall tires optional in both sizes.

Wheelbase: 109.5 inches.

Other Available Equipment: Power steering, heavy-duty battery, fresh air heater and defroster, air conditioner, Safety Package (padded dash and sun visors), seat belts, power-operated tailgate window (for Sedan Delivery), white sidewall tires, 3 types of bright-metal wheel covers; tinted glass, 2-speed electric windshield wipers with windshield washers, push button radio, 42 ampere-hour alternator, ICC emergency light flasher, cigar-cigarette lighter, courtesy light package (includes ash tray, dispatch box, map, backup and door courtesy lights plus cargo area light for Sedan Delivery). Bucket seats with carpeting are available with Rancheros having standard interiors. Bucket seats with or without console, with special door trim panels and arm rests, and carpeting are available with Rancheros having deluxe interiors.

Deluxe Trim Package: Sedan Delivery—Arm rest on right side • sun visor on right side, black or red color-keyed steering wheel • black or red plated vinyl upholstery. **Ranchero—**bright-metal moldings around top of box and cab back on body sides and on rocker panels; added sound deadener; cab front floor carpeting, and deluxe instrument panel • Palomino, blue, black or red plated vinyl seat trim with color-keyed steering wheel. **Both Models—**Bright-metal moldings on side door window frames, dome light door switches and cigar-cigarette lighter.

PRODUCTS OF



MOTOR COMPANY

SEP 25 1964

Litho in U.S.A. 8/64