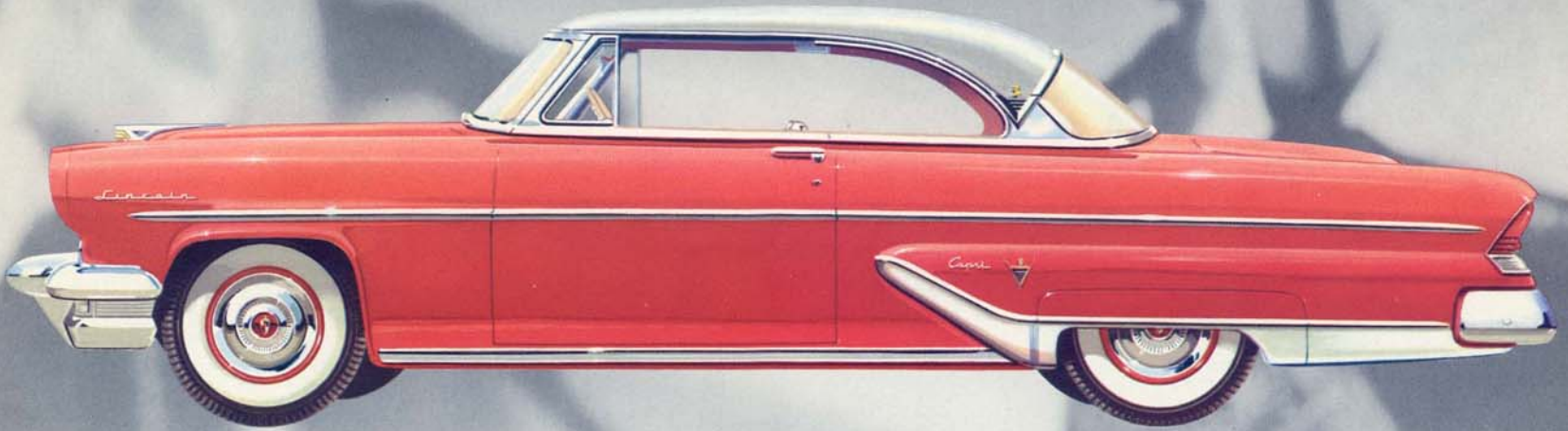


# 1955 LINCOLN



*Capri: the special custom sport coupe*



SUPERB NEW BEAUTY OF LINE AND FORM...

*Capri: the special custom four-door sedan*



## STYLED FOR THE MOBILITY OF OUR TIME

This 1955 Lincoln is a new kind of fine car. Its lines are long, low and sweeping. From the dynamic thrust of forward-leaning headlight rims to the new tail lamps, this is fresh, sculptured beauty.

Now open the door. Slip behind the handsome steering wheel. Close-up you see the instrument panel—you read every dial at a glance. Scarcely lift your eyes, and you look over a low, downward-sweeping hood. You have a practical view of the road ahead.

Glance across the wide seat, then lean back against the supporting bolster. All around you and behind you too, is visibility unlimited, and you relax in deep comfort. The interior decor is new and fresh. And in both Lincoln and Lincoln Capri models, you have a wide selection of smartly textured fabrics or soft, genuine leathers in contrasting new colors.

In the driver's seat of a new 1955 Lincoln or Lincoln Capri, you're sitting on top of the motoring world.

## NEW SUPER-COMPRESSION POWER WITH GREAT NEW TURBO-DRIVE

For 1955, Lincoln offers a new, more powerful overhead valve V-8 engine. It's a bigger, more responsive engine and the most efficient ever designed by Lincoln engineers. The emphasis is on high torque: torque is an engineer's way of saying usable, fleet power—power concentrated in the ranges where most of your driving is done. And to make full use of this new power, Lincoln presents for the first time, the newest, smoothest automatic transmission in America—Turbo-Drive. New Turbo-Drive brings new flexibility, new smoothness to driving. It has the advantages of instant getaway, immediate response for passing, and tremendous power reserves for all driving ranges. You'll find new Lincoln power and new Turbo-Drive combine to give you the greatest driving sensation you've ever experienced.

*New rear styling gives Lincoln a fresh, dynamic look.*



*Brilliant simplification highlights Lincoln's new bumper-grille.*

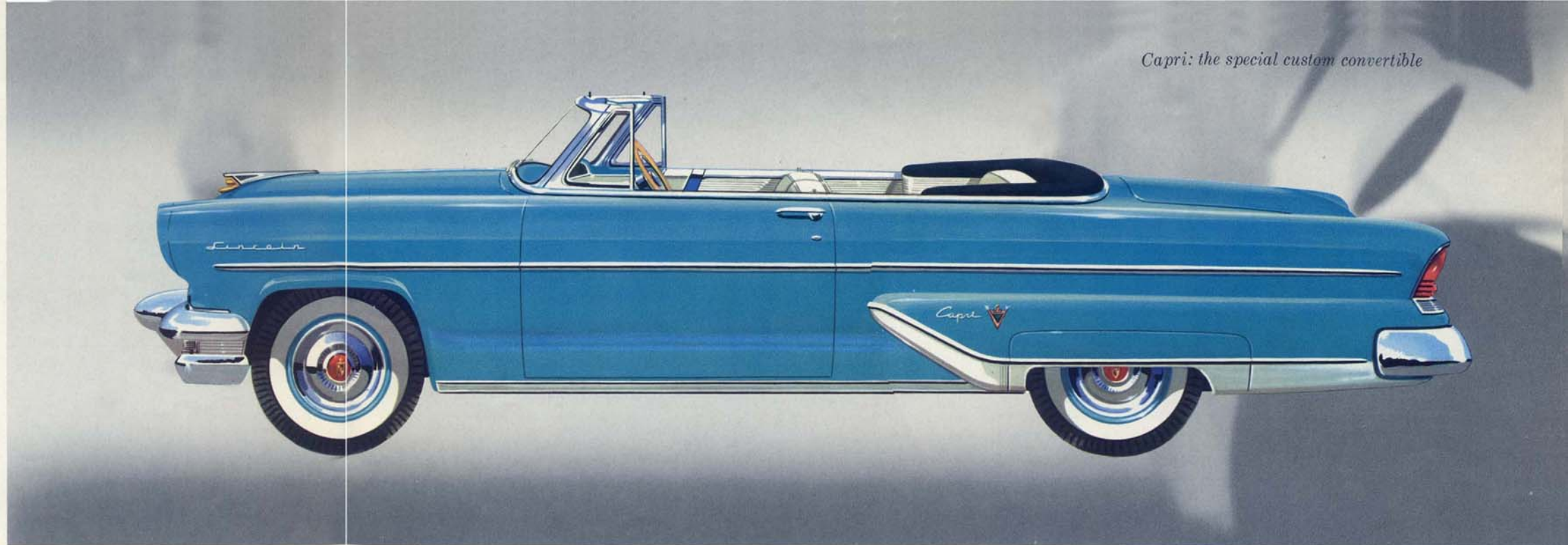
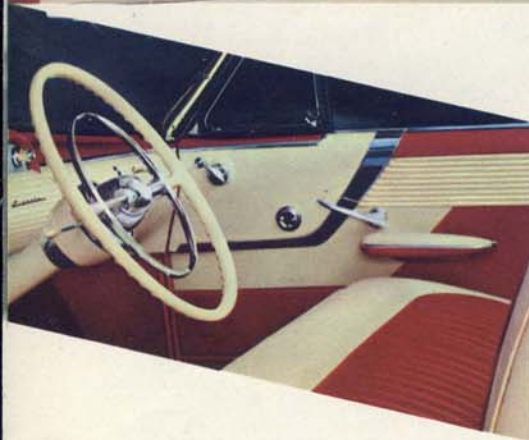


## LINCOLN AND CAPRI INTERIORS

*—a blend of crisp tailoring  
and modern colors . . .  
soft genuine leathers . . .  
contemporary fabrics*

In the 1955 Lincoln and Capri, you have a wide selection of interior trim. There are new, modern weave nylon and sea-weave fabrics, leather and fabric combinations, and a full range of soft, pliant all-leather decors. Interior appointments are of bright metal. All are styled exclusively for Lincoln.

And color plays a new, dynamic role in Lincoln. Each of the many interiors are keyed to blend skillfully or contrast smartly with the many exterior color selections.

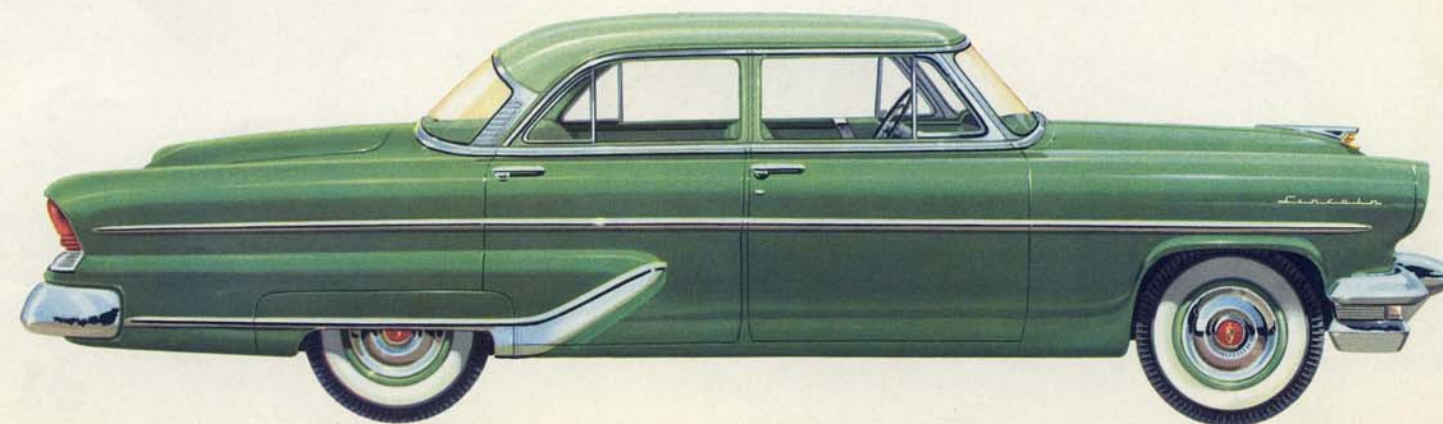


*Capri: the special custom convertible*

*Lincoln: the custom sport coupe*



*Lincoln: the custom four-door sedan*



# AMERICA'S FINEST POWER COMBINATION



## SPECIFICATIONS

**ENGINE:** Short-stroke, low-friction design, 90° V-8. Displacement, 341 cu in. Horsepower, 225 @ 4400 rpm. Torque rating, 332 lb-ft @ 2500 rpm. Bore 3.94 in., stroke 3.5 in. Compression ratio, 8.5 to 1. Rotating type overhead valves. Automatic 4-barrel carburetor. Full-vacuum spark control. Heavy duty pressure lubrication. Hydraulic valve lifters. Full-flow oil filter. Pressure cooling. 50-ampere low-speed charging generator.

**CHASSIS:** Wheelbase, 123 in., Tread 58.5 in. (f), 60 in. (r). Ball-joint front suspension. Symmetrical steering with 26.1 to 1 ratio (manual). Variable-rate 8-leaf springs with rubber-bushed brackets and tension type shackles. Automatic Turbo-Drive transmission. Rear axle ratio 3.07 to 1 standard; 3.31 to 1 optional and on air conditioned cars. Brake drum diameter, 12 inches. Total braking area, 207.5 sq in. Welded stamped steel wheels. Tubeless tires. Tire size, 8.00 x 15 on closed cars, 8.20 x 15 on convertible.

**BODY:** Over-all length 215.6 in., width 77.6 in., height (loaded) 62.7 in. Welded all-steel construction. Glass fiber insulation against sound and weather. Combination bumper-grille. Counter-balanced hood. Unified tail lamp assemblies. Up to 31 cu ft trunk capacity. Up to 22.8 sq ft window area. Concealed center-fill gas tank pipe. Double-panel doors. Flight deck instruments and controls. Foam rubber seats. Baked enamel finish.

THESE SPECIFICATIONS WERE IN EFFECT AT THE TIME THIS LITERATURE WAS APPROVED FOR PRINTING. LINCOLN DIVISION OF FORD MOTOR COMPANY, DETROIT, MICHIGAN, RESERVES THE RIGHT TO DISCONTINUE OR CHANGE AT ANY TIME. SPECIFICATIONS, DESIGN OR PRICES WITHOUT INCURRING ANY OBLIGATION. TINTED GLASS, WHITE SIDE-WALL TIRES, AND ACCESSORIES, AS ILLUSTRATED, ARE OPTIONAL AT EXTRA COST.

## TURBO-DRIVE

*Newest, smoothest automatic drive*

Lincoln introduces Turbo-Drive—America's finest automatic transmission. With its new, unique kick-down feature, Turbo-Drive lets you select your own driving range with your toe. At low speed, you can kick-down into LO for rapid acceleration and getaway; or at cruising speed, you can kick-down into INTERMEDIATE for a surge of power to pass another car or climb a steep grade.

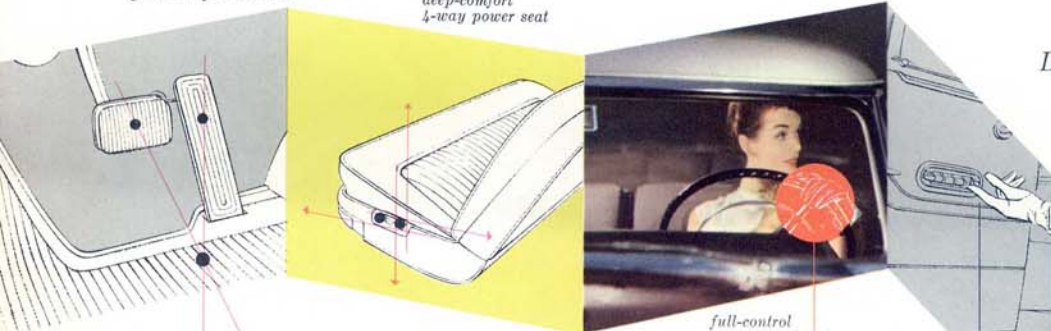
## NEW V-8 ENGINE

*—finer performance every mile*

For 1955, Lincoln has a big, brawny overhead valve V-8 engine that develops 225 horsepower. A highly efficient engine, it is designed to give you top performance in every driving range—more and better acceleration in the ranges where most of your driving is done. And with this new Lincoln engine, you have a greater power reserve than ever before.

power features

deep-comfort  
4-way power seat



heel-pivot power braking

Lincoln power features make the going and the stopping easier on mind and muscle. Optional equipment available on all models, they can add even greater pleasure to your driving.

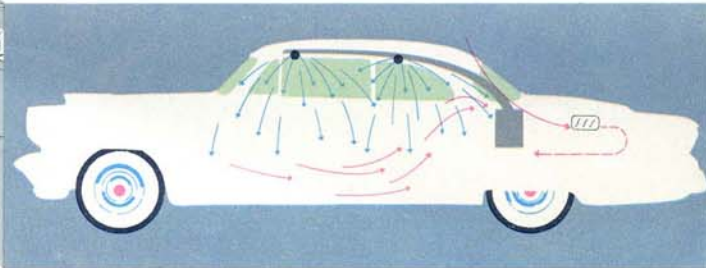
full-control  
power steering

power window lifts

## Lincoln Air Conditioning

Lincoln's completely new air conditioner is a custom-built optional system developed exclusively for Lincoln. With a touch of your finger you can fill the car with

fresher, cooler air. With its greater capacity, outside air intakes, and "full-range" controls, this system lets you select and ride in exactly the climate you desire.



5/11