

2016 | **EDGE**



Go Further



Aggressively styled.

The 2016 Ford Edge grabs your attention as well as it grabs the road. From the dynamic grille to its fluid lines, Edge assures that you arrive in style. New for 2016, SYNC® 3 – our next generation of voice-activated technology¹ – empowers you to go even further. Find your next adventure in Edge.

Titanium. Bronze Fire Metallic Tinted Clearcoat. Available equipment.

¹Available feature. Driving while distracted can result in loss of vehicle control. Only use SYNC/other devices, even with voice commands, when it is safe to do so. Some features may be locked out while the vehicle is in gear. Not all features are compatible with all phones. Message and data rates may apply.

2016 **EDGE**
ford.com





Openly driven.

Lively acceleration and passing performance come from a single turbocharged, twin-scroll direct-injection 2.0L EcoBoost® engine. This standard powerhouse produces 245 hp¹ and 275 lb.-ft. of low-end torque!¹

Get outstanding fuel efficiency with Auto Start-Stop.² It shuts off the engine when you stop and restarts it as you release the brake. With this technology, Edge has an EPA-estimated rating of 21 city and 30 hwy mpg.³ To be more aerodynamic and fuel efficient, EcoBoost models also feature Active Grille Shutters.

Tow up to 3,500 lbs.⁴ with the 2.0L EcoBoost or the 280-hp 3.5L Ti-VCT V6⁵ and the Class II Trailer Tow Package. Trailer sway control, included in the package, helps you maintain control of the vehicle and your trailer.⁶

Embrace curves and corners with the help of new electric power-assisted steering and Torque Vectoring Control.⁶ These technologies help give Edge its responsive steering feel and enhance your hold on the road.



SEL. Magnetic. Available equipment.

¹Tested with 93-octane fuel. ²Available only on SE with FWD. ³EPA-estimated rating of 21 city/30 hwy/24 combined mpg, 2.0L EcoBoost with Auto Start-Stop, FWD. Actual mileage will vary. ⁴When properly equipped.

⁵Available feature. ⁶Remember that even advanced technology cannot overcome the laws of physics. It's always possible to lose control of a vehicle due to inappropriate driver input for the conditions.

2016 **EDGE**
ford.com





Undeniably athletic.

SE. SEL. Titanium. Sport. The 2016 Edge lineup asserts its presence with a striking new stance. Luxurious accommodations for 5 are paired with a smooth, quiet ride and precise handling. Plus, sophisticated technologies¹ help enhance its prowess – and yours.

Enjoy powerfully efficient performance on Edge Sport, thanks to its twin-turbocharged, direct-injection 2.7L EcoBoost[®] engine. Equipped with this V6 engine, Edge has an EPA-estimated rating of up to 24 hwy mpg.² It also revs you up with best-in-class³ gas V6 hp and torque. Plus, racing-style paddle shifters are included with the 6-speed SelectShift[®] automatic transmission on every Edge.

Exceptional road-holding capability is delivered by its 4-wheel independent suspension. Plus, Edge Sport backs its aggressive look with a uniquely sport-tuned suspension.

Enhanced handling and maximized traction are yours with all-wheel drive (AWD),¹ standard on Edge Sport this year. Every Edge also gets Curve Control, which helps reduce the vehicle's speed by up to 10 mph in approximately 1 second if it senses you're taking a curve too quickly.⁴



Sport. Electric Spice. Available equipment.

¹Available feature. ²EPA-estimated rating: 17 city/24 hwy/20 combined mpg, 2.7L EcoBoost, AWD. Actual mileage will vary. ³Class is Midsize Utilities, non-diesel, based on Ford segmentation. ⁴Remember that even advanced technology cannot overcome the laws of physics. It's always possible to lose control of a vehicle due to inappropriate driver input for the conditions. ⁵Tested with 93-octane fuel.

2016 **EDGE**
ford.com





Smartly communicative.

Voice-activated SYNC^{®1} technology helps you keep your eyes on the road and hands on the wheel. SYNC. Say the word.[®]

- **Hands-free calling** lets you make a call with a simple push of a button along with the sound of your voice.
- **Automatic phone book download** transfers the names and numbers in your compatible phone automatically, once paired.
- **Voice-activated music commands** let you say what music you want to hear and listen to it easily with voice-activated search, or say "Bluetooth[®] audio" to stream content from your phone.
- **SYNC AppLink^{™2}** lets you control some of your favorite compatible mobile apps with your voice.
- **911 Assist^{®3}** is a convenient no-charge feature that allows you to connect your compatible cell phone to help call 911 in the event of an accident.

Upgrade to SYNC 3.¹ Our next generation of voice-activated technology with an easy-to-use new design and new features.

- **New hardware meets new software** on the easy-to-read color touch screen that displays phone, audio and navigation⁴ functions on the home screen.
- **High-speed performance** means you'll experience quick reactions to your commands. Plus, the capacitive touch screen includes a convenient swipe feature similar to your smartphone (as well as pinch-to-zoom capability within navigation⁴).
- **Enhanced voice recognition** lets you talk with simple, real-world voice commands and the system responds naturally to your voice.
- **Easy destination entry** feature within navigation⁴ helps you locate your favorite restaurants, nearest ATM and more.
- **Siri[®] seamless integration** brings the power of Siri Eyes Free⁵ and your iPhone[®] into your vehicle.
- **Automatic updates over Wi-Fi^{®6}** let you keep SYNC 3 up-to-date with the latest software as new updates become available.

| SYNC

Titanium. Ceramic leather trim with perforated inserts. SYNC 3. Available equipment.

¹Driving while distracted can result in loss of vehicle control. Only use SYNC/other devices, even with voice commands, when it is safe to do so. Some features may be locked out while the vehicle is in gear. Not all features are compatible with all phones. Message and data rates may apply. ²SYNC AppLink is compatible with select smartphone platforms. Commands may vary by phone and AppLink software. ³The vehicle's electrical system (including the battery), the wireless service provider's signal and a connected mobile phone must all be available and operating for 911 Assist to function properly. These systems may become damaged in a crash. The paired mobile phone must be connected to SYNC, and the 911 Assist feature enabled, in order for 911 to be dialed. When the feature is ON, 911 Assist uses your paired and connected mobile phone to assist occupants to contact emergency services by dialing 911 if your airbag deploys or, on certain vehicles, if the emergency fuel pump shut-off is activated. Aftermarket on-board diagnostic devices may interfere with various vehicle systems including Vehicle Health Report and 911 Assist. To avoid interference, remove the device or contact the device maker for more information on compatibility. ⁴Available feature. ⁵You must have a Bluetooth-enabled phone paired to your SYNC system. ⁶Optional Navigation System map updates cannot be received via Wi-Fi and require a separate update.



2016 **EDGE**
ford.com

Exceptionally connected.

From its acoustically balanced sound system to its exceptional connectivity, the 2016 Ford Edge is designed to enhance your travels.

Quality, comfort and capability all come together here. Its finely crafted interior design offers you a heated steering wheel,¹ 10-way power heated and cooled front seats,¹ and up to 73.4 cu. ft. of cargo space with the rear 60/40 split seat folded flat.

For amazing sound, the 12-speaker Audio System from Sony^{®1} is teamed with HD Radio™ Technology.¹ By broadcasting a digital signal over traditional radio frequencies, HD Radio Technology gives you up to 3 additional channels – per FM station – of new, local content. It can also display the artist, song title, album name and more. All without the need for a subscription.

SiriusXM® Satellite Radio¹ welcomes you to the World of SiriusXM.² Enjoy more than 150 channels including commercial-free music, plus live sports, news and exclusive entertainment, with a 6-month trial subscription to the All Access package included with your new vehicle. You'll hear every channel available, plus you can listen online and on the SiriusXM app.²

Navigation¹ with SiriusXM Traffic and Travel Link[®] includes a 5-year complimentary SiriusXM Traffic and Travel Link² trial subscription. Global Positioning System (GPS) technology is combined with 3-D mapping and provides voice-guided turn-by-turn directions. With SiriusXM Traffic and Travel Link, you'll get detailed traffic information, plus current and forecasted weather, gas station locations and prices, sports scores and schedules, and movie theater locations with show listings and times.

(((SiriusXM)))



Titanium. Ceramic leather trim with perforated inserts. SYNC^{®3}. Available equipment.

¹Available feature. ²SiriusXM Satellite Radio, SiriusXM Traffic and SiriusXM Travel Link subscriptions are sold separately or as a package by SiriusXM after your trial period, and are continuous until you call SiriusXM at 1-866-635-2349 to cancel. If you decide to continue service after your trial, the subscription plan you choose will automatically renew thereafter and you will be charged according to your chosen payment method at then-current rates. Fees and taxes apply. All fees and programming subject to change. See Customer Agreement for complete terms and more information at www.siriusxm.com.



Confidently alert.

Busy city streets. Long trips on the highway. High-speed cruising and passing. The 2016 Edge offers advanced driver-assist technologies¹ to help you master these real-world challenges and many more.

Maintain your lane with help from our Lane-Keeping System!¹ It can detect lane markings with a forward-facing camera, and can send vibration pulses to the steering wheel and apply steering torque if needed, prompting you to steer back toward center.² There's also a Driver Alert System¹ that displays a coffee cup icon if it detects you could use a break.

Get a heads-up from adaptive cruise control and collision warning with brake support!¹ This system helps maintain your choice of 4 preset gaps from the vehicle in front of you and can alert you to a potential collision. If one is detected, it flashes a heads-up display warning on the windshield, sounds an alarm, and helps by pre-charging the brake system.

Stay alert to traffic detected in blind spots as you drive forward, or traffic nearing either side of the vehicle as you slowly back up, thanks to BLIS[®] (Blind Spot Information System) with cross-traffic alert!¹ BLIS helps warn you using lights embedded in the sideview mirrors.³ Cross-traffic alert uses the same lights, plus an audio warning and a message center notice. Edge technology is all about empowering you.

Make an informed approach using the front 180-degree camera with washer.¹ Just press a button on the instrument panel to engage the front grille-mounted camera to help you see around corners, down alleys and even when you're pulling out of parking spots.



Titanium. Too Good to Be Blue. Available equipment.

¹Available feature. Driver-assist features are supplemental and do not replace the driver's attention, judgment and need to control the vehicle.

²Lane-Keeping System does not control steering. ³BLIS replaces standard integrated blind spot mirrors.

2016 **EDGE**
ford.com





Easily maneuvered. And powerfully uplifting.

Perpendicular. Parallel. Backing in. Heading out. The 2016 Edge offers advanced technologies¹ to ease you through all sorts of challenging situations. Enhanced active park assist with side parking sensors¹ helps you find a spot *and* steers the vehicle into place, while you control the gear shifter, and the brake and accelerator pedals. It can steer Edge out of tight parallel spots too. And alert you to obstacles near the sides of the vehicle along the way.

New adaptive steering¹ dynamically adjusts the steering response of the front wheels based on how fast the vehicle is moving. It helps make Edge even easier to steer at low speeds and more responsive at highway speeds.

For easy access to the cargo area, just kick your foot under the rear bumper with your Intelligent Access key fob tucked in a pocket or purse. The hands-free foot-activated liftgate² detects the motion of your leg and the proximity of the fob, then opens or closes on its own.

Titanium. Ruby Red Metallic Tinted Clearcoat. Available equipment.

¹Available feature. Driver-assist features are supplemental and do not replace the driver's attention, judgment and need to control the vehicle. ²Available feature.

2016 **EDGE**
ford.com



Edge Specifications



Engines/EPA-Estimated Ratings¹ & Dimensions

2.0L EcoBoost®

245 hp @ 5,500 rpm ²
275 lb.-ft. of torque @ 3,000 rpm ²
6-speed SelectShift automatic
FWD 20 city/30 hwy/24 combined mpg
AWD 20 city/28 hwy/23 combined mpg

2.0L EcoBoost with Auto Start-Stop

245 hp @ 5,500 rpm ²
275 lb.-ft. of torque @ 3,000 rpm ²
6-speed SelectShift automatic
FWD 21 city/30 hwy/24 combined mpg

3.5L Ti-VCT V6

280 hp @ 6,500 rpm
250 lb.-ft. of torque @ 4,000 rpm
6-speed SelectShift automatic
FWD 18 city/26 hwy/21 combined mpg
AWD 17 city/25 hwy/20 combined mpg

2.7L EcoBoost V6

315 hp @ 4,750 rpm ²
350 lb.-ft. of torque @ 2,750 rpm ²
6-speed SelectShift automatic
AWD 17 city/24 hwy/20 combined mpg

Exterior

Wheelbase	112.2"
Length	188.1"
Height	68.6"
Width – Excluding mirrors	75.9"
Width – Including mirrors	85.8"
Width – Mirrors folded	78.4"
Liftover height	29.7"

Interior

	Front/Rear
Head room	40.2"/40.3"
Shoulder room	60.3"/60.5"
Hip room	55.9"/57.5"
Leg room	42.6" (max.)/40.6"

Capacities (cu. ft.)

Passenger volume	113.9
Cargo volume behind front seats	73.4
Cargo volume behind rear seats	39.2
Fuel tank (gal.)	
FWD/AWD	18.4/18.5

Standard Features

Mechanical

6-speed SelectShift® automatic transmission with paddle activation
4-wheel independent suspension
Electric power-assisted steering
Front-wheel drive (FWD)
Hill start assist
Power disc brakes with Anti-Lock Brake System (ABS)
Torque Vectoring Control

Seating

Front bucket seats with 4-way adjustable head restraints
Rear 60/40 split fold-flat seat with manually reclining seat backs and folding center armrest with 2 cupholders

Interior

12-volt powerpoints (2 in 1st row, 1 in 2nd row and 1 in rear cargo area)
Acoustic-laminate windshield
Adjustable driver and front-passenger sun visors with illuminated vanity mirrors
Air conditioning
Below-floor Cargo Management System
Cargo area tie-downs and hooks
Cargo net
Center console with storage tray, armrest, powerpoint and 2 cupholders
Coat hooks (2)
Compass and outside temperature displays
Cupholders/beverage holders (8)
Front-passenger (1) and B-pillar (2) assist handles
Intelligent Access with push-button start
Leather-wrapped shift knob
Manual tilt/telescoping steering column
Map pockets in driver and front-passenger seat backs
Overhead console with sunglasses holder
Power door locks
Power windows with one-touch-up/-down feature for driver and front-passenger windows
Rear-window defroster
Steering wheel-mounted cruise, audio and 5-way controls (2)

Exterior

Automatic headlamps with wiper activation
Body-color rear spoiler
Configurable LED daytime running lamps
Dual bright exhaust tips
Easy Fuel® capless fuel filler
LED taillamps
Power sideview mirrors with integrated blind spot mirrors and manual fold-away design
Privacy glass (rear doors, rear quarter windows and liftgate window)
Quad-beam halogen headlamps
Wipers – Front: speed-sensitive, variable-intermittent with washer; rear: 2-speed with washer

Safety & Security

Personal Safety System™ for driver and front passenger includes dual-stage front airbags, ³ safety belt pretensioners, safety belt energy-management retractors, safety belt usage sensors, driver's seat position sensor, crash severity sensor, restraint control module and Front-Passenger Sensing System
AdvanceTrac® with RSC® (Roll Stability Control™) and Curve Control
Battery saver with headlamps-off delay
Belt-Minder® front safety belt reminder
Child-safety rear door locks
Driver's knee airbag ³
Front height-adjustable shoulder safety belts
Front-seat side airbags ³
Glove-box-door-integrated knee airbag ³
LATCH – Lower Anchors and Tether Anchors for Children (2 in rear outboard seating positions)
MyKey®
Rear view camera
Safety Canopy® System with side-curtain airbags ³ and rollover sensor
SecuriLock® Passive Anti-Theft System
SOS Post-Crash Alert System™
Tire Pressure Monitoring System (excludes spare)

Dimensions may vary by trim level.

¹Actual mileage will vary. ²Tested with 93-octane fuel. ³Always wear your safety belt and secure children in the rear seat.



SEL. Magnetic. Available equipment.

SEL. 73.4-cu.-ft. rear cargo area. Available equipment.

SEL. Panoramic Vista Roof.¹

SE

Equipment Group 100A

Includes all standard features, plus:

Mechanical

2.0L EcoBoost® engine with Active Grille Shutters and Auto Start-Stop (Auto Start-Stop n/a with AWD)

Seating

6-way manual driver's seat
4-way manual front-passenger seat
Cloth seats

Interior

AM/FM stereo/single-CD player with MP3 capability and 6 speakers
Dark Ano Gray instrument panel appliqué
Dark Slate Metallic center stack finish
Front and rear carpeted floor mats
SYNC® Enhanced Voice Recognition Communications and Entertainment System with 4.2" color LCD screen in center stack, AppLink™ 911 Assist,® and media hub with smart-charging USB port

Exterior

18" Sparkle Silver-painted aluminum wheels with P245/60R18 all-season BSW tires
Black sideview mirrors
Body-color door handles
Bright grille

Available Options & Package

2nd-row outboard inflatable safety belts
All-wheel drive (AWD)
Black roof-rack side rails
Cargo Accessories Package includes interior cargo cover, cargo area protector and rear bumper protector
Dual Headrest DVD by INVISION™²
Front and rear all-weather floor mats
Locking wheel lug nuts
P235/60R18 all-season snow chain-compatible tires

SEL

Equipment Group 200A

Includes select SE features, plus:

Mechanical

2.0L EcoBoost engine with Active Grille Shutters

Seating

10-way power driver's seat
6-way power front-passenger seat
EasyFold® rear seat back release
Unique cloth seats

Interior

Auto-dimming rearview mirror
Dual-zone electronic automatic temperature control
Leather-wrapped steering wheel
Pewter-appearance instrument panel appliqué
Satin Twilight accents
SiriusXM® Satellite Radio with 6-month All Access trial subscription

Exterior

18" Sparkle Silver-painted split-spoke aluminum wheels with P245/60R18 all-season BSW tires
Body-color, heated sideview mirrors with security approach lamps and integrated LED turn signal indicators
Bright beltline moldings
LED signature lamps
Reverse Sensing System
SecuriCode™ invisible keypad

Available Equipment Group

Equipment Group 201A – SYNC 3 Enhanced Voice Recognition Communications and Entertainment System with 8" color LCD touch screen in center stack with swiping capability, 911 Assist, AppLink and 2 smart-charging USB ports + leather-trimmed, heated front seats + Premium Audio System with 9 speakers

Available Options & Packages

3.5L Ti-VCT V6 engine
18" polished aluminum wheels (requires 201A)
2nd-row outboard inflatable safety belts
All-wheel drive (AWD)
Black roof-rack side rails (n/a with Vista Roof®)
Cargo Accessories Package includes interior cargo cover, cargo area protector and rear bumper protector
Class II Trailer Tow Package includes trailer sway control
Cold Weather Package includes heated steering wheel, and front and rear all-weather floor mats (requires 201A)
Dual Headrest DVD by INVISION™²
Front and rear all-weather floor mats
Locking wheel lug nuts
P235/60R18 all-season snow chain-compatible tires
Panoramic Vista Roof (requires 201A)
Technology Package includes voice-activated Navigation System with pinch-to-zoom capability, and integrated SiriusXM Traffic and Travel Link® with 5-year trial subscription, BLIS® (Blind Spot Information System) with cross-traffic alert, Remote Start System, auto-dimming driver's sideview mirror, and 110-volt power outlet (requires 201A)
Utility Package includes hands-free foot-activated liftgate, perimeter alarm, and universal garage door opener (requires 201A)



18" Sparkle Silver-Painted Aluminum
Standard: SE



18" Sparkle Silver-Painted Split-Spoke Aluminum
Standard: SEL



18" Polished Aluminum
Available: SEL

¹Available feature. ²Ford Licensed Accessory.

Titanium

Equipment Group 300A

Includes select SEL features, plus:

Seating

10-way power driver and front-passenger seats with driver's memory feature

Heated front sport-style bucket seats

Leather-trimmed seats

Interior

Acoustic-laminate front-door glass

Ambient lighting

Audio System from Sony® with 12 speakers and HD Radio™ Technology

Illuminated front door-sill plates

Mechanical Stripe aluminum instrument panel appliqué

Metal-plated accents

SYNC® 3 Enhanced Voice Recognition Communications and Entertainment System with 8" color LCD touch screen in center stack with swiping capability, 911 Assist® AppLink™ and 2 smart-charging USB ports

Universal garage door opener

Exterior

19" premium Luster Nickel-painted aluminum wheels with P245/55R19 all-season BSW tires

Body-color door handles with bright inserts

Body-color, heated sideview mirrors with integrated LED turn signal indicators, security approach lamps and memory feature

Hands-free foot-activated liftgate

LED taillamps with light bar

Perimeter alarm

Available Equipment Groups

Equipment Group 301A – Technology Package

includes voice-activated Navigation System with pinch-to-zoom capability, and integrated SiriusXM® Traffic and Travel Link® with 5-year trial subscription, BLIS® (Blind Spot Information System) with cross-traffic alert, Remote Start System, auto-dimming driver's sideview mirror, and 110-volt power outlet + perforated leather-trimmed seats + heated and cooled front seats + heated rear outboard seats + panoramic Vista Roof®

Equipment Group 302A – Includes all content of 301A + Lane-Keeping System + enhanced active park assist with side parking sensors + front 180-degree camera with washer + HID headlamps with auto high beams + rain-sensing windshield wipers + 2nd-row outboard inflatable safety belts

Available Options & Packages

3.5L Ti-VCT V6 engine

20" polished aluminum wheels with Dark Stainless-painted pockets

2nd-row outboard inflatable safety belts (included on 302A)

All-wheel drive (AWD)

Cargo Accessories Package includes interior cargo cover, cargo area protector and rear bumper protector

Class II Trailer Tow Package includes trailer sway control

Cold Weather Package includes heated steering wheel, and front and rear all-weather floor mats

Driver's Package includes adaptive cruise control and collision warning with brake support, adaptive steering and power-tilt/-telescoping steering column (requires 301A or 302A)

Dual Headrest DVD by INVISION™¹

Front and rear all-weather floor mats

Locking wheel lug nuts

P235/60R18 all-season snow chain-compatible tires (requires and only available with 18" polished aluminum wheels)

Panoramic Vista Roof (included on 301A and 302A)

Silver roof-rack side rails (300A only; n/a with Vista Roof)

Technology Package includes voice-activated Navigation System with pinch-to-zoom capability, and integrated SiriusXM Traffic and Travel Link with 5-year trial subscription, BLIS (Blind Spot Information System) with cross-traffic alert, Remote Start System, auto-dimming driver's sideview mirror, and 110-volt power outlet (included on 301A and 302A)



Bronze Fire Metallic Tinted Clearcoat. Available equipment.

2nd-row outboard inflatable safety belts.² Ceramic leather trim. Available equipment.

39.2 cu. ft. of cargo space behind 2nd row.

HID headlamps with auto high beams.²

LED taillamps with light bar.



18" Polished Aluminum
Available (requires
snow chain-compatible tires)



19" Premium Luster Nickel-
Painted Aluminum
Standard



20" Polished Aluminum with
Dark Stainless-Painted Pockets
Available

¹Ford Licensed Accessory. ²Available feature.



Electric Spice. Available equipment.

Unique Sport door-trim inserts.

2.7L EcoBoost V6, twin-turbocharged, direct-injection engine.

Aluminum brake and accelerator pedal covers.

Trapezoidal fascia-integrated dual bright exhaust outlets.



20" Polished Aluminum with Low-Gloss Magnetic-Painted Pockets
Standard



21" Premium Tarnished Dark-Painted Aluminum
Available

Sport

Equipment Group 400A
Includes select SEL features, plus:

Mechanical

2.7L EcoBoost® V6 engine with Active Grille Shutters
All-wheel drive (AWD)
Sport-tuned suspension

Seating

10-way power, heated driver and front-passenger seats with driver's memory feature
Leather-trimmed seats with perforated sueded cloth inserts

Interior

Acoustic-laminate front-door glass
Aluminum brake and accelerator pedal covers
Ambient lighting
Audio System from Sony® with 12 speakers and HD Radio™ Technology
Brush weave aluminum instrument panel appliqué
Deluxe front and rear carpeted floor mats
Illuminated front door-sill scuff plates
Metal-plated accents
Power-tilt/-telescoping steering column
SYNC® 3 Enhanced Voice Recognition Communications and Entertainment System with 8" color LCD touch screen in center stack with swiping capability, 911 Assist®, AppLink™ and 2 smart-charging USB ports
Universal garage door opener

Exterior

20" polished aluminum wheels with low-gloss Magnetic-painted pockets and P245/50R20 all-season BSW tires
Black beltline moldings
Body-color cladding
Body-color front and rear bumpers
Body-color, heated sideview mirrors with integrated LED turn signal indicators, security approach lamps and memory feature
Dual bright exhaust outlets integrated into rear trapezoidal fascia
Hands-free foot-activated liftgate
LED taillamps with light bar
Perimeter alarm
Piano Black grille with Magnetic accents
Unique body-color front and rear lower fascias
Unique headlamp treatment

Available Equipment Group

Equipment Group 401A – Technology Package includes voice-activated Navigation System with pinch-to-zoom capability, and integrated SiriusXM® Traffic and Travel Link® with 5-year trial subscription, BLIS® (Blind Spot Information System) with cross-traffic alert, Remote Start System, auto-dimming driver's sideview mirror, and 110-volt power outlet + Lane-Keeping System + enhanced active park assist with side parking sensors + front 180-degree camera with washer + HID headlamps with auto high beams + rain-sensing windshield wipers + heated and cooled front seats + heated rear outboard seats

Available Options & Packages

21" premium Tarnished Dark-painted aluminum wheels
2nd-row outboard inflatable safety belts
Adaptive cruise control and collision warning with brake support

Cargo Accessories Package includes interior cargo cover, cargo area protector and rear bumper protector

Cold Weather Package includes heated steering wheel, and front and rear all-weather floor mats

Dual Headrest DVD by INVISION™¹

Front and rear all-weather floor mats

Locking wheel lug nuts

Panoramic Vista Roof®

Remote Start System (included on 401A)

Summer-only performance tires² (requires 21" wheels)

Technology Package includes voice-activated Navigation System with pinch-to-zoom capability, and integrated SiriusXM Traffic and Travel Link with 5-year trial subscription, BLIS (Blind Spot Information System) with cross-traffic alert, Remote Start System, auto-dimming driver's sideview mirror, and 110-volt power outlet (included with 401A)

¹Ford Licensed Accessory. ²Ford does not recommend using summer tires when temperatures drop to approximately 45°F or below (depending on tire wear and environmental conditions) or in snow/ice conditions. If the vehicle must be driven in these conditions, Ford recommends using all-season or snow tires.

Exteriors



White Platinum Metallic Tri-coat



Oxford White



Ingot Silver*



Ruby Red Metallic Tinted Clearcoat



Bronze Fire Metallic Tinted Clearcoat



Too Good to Be Blue*



Kona Blue*



Electric Spice*



Magnetic*



Shadow Black

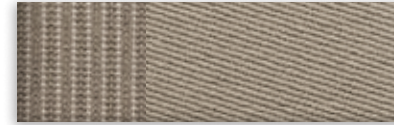
Interiors



1 Dune Cloth



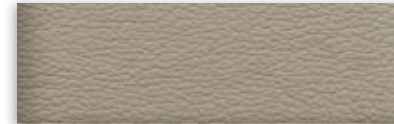
2 Ebony Cloth



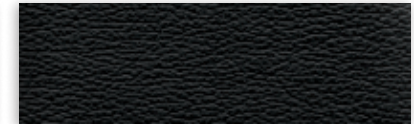
3 Unique Dune Cloth



4 Unique Ebony Cloth



5 Dune Leather



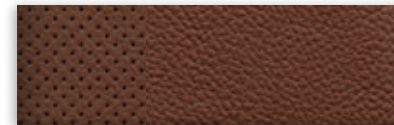
6 Ebony Leather



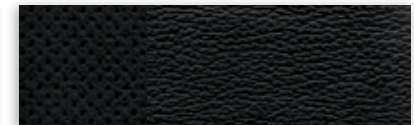
7 Ceramic Leather



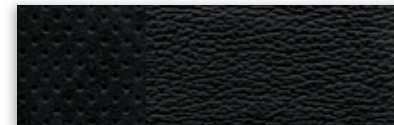
8 Ceramic Leather with Perforated Inserts



9 Cognac Leather with Perforated Inserts



10 Ebony Leather with Perforated Inserts



11 Ebony Leather with Perforated Sueded Cloth Inserts

Exteriors	Interiors											
	SE		SEL				Titanium				Sport	
White Platinum Metallic Tri-coat ¹			3	4	5	6	6	7	8	9	10	11
Oxford White	1	2	3	4	5	6						
Ingot Silver	1	2	3	4	5	6	6	7	8	9	10	11
Ruby Red Metallic Tinted Clearcoat ¹			3	4	5	6	6	7	8	9	10	11
Bronze Fire Metallic Tinted Clearcoat ¹			3	4	5	6	6	7	8	9	10	11
Too Good to Be Blue	1	2	3	4	5	6	6	7	8	9	10	11
Kona Blue	1	2	3	4	5	6	6	7	8	9	10	11
Electric Spice			4	6			6	7	8	9	10	11
Magnetic	1	2	3	4	5	6	6	7	8	9	10	11
Tuxedo Black	1	2	3	4	5	6	6	7	8	9	10	11

5, 6 Requires 201A on SEL. 8, 9, 10 Requires 301A or 302A

¹Additional charge.

Colors are representative only. See your dealer for actual paint/trim options.

*Metallic.



SE in Magnetic accessorized with smoked side window deflectors, Aeroskin™ hood protector by Lund^{®1} front and rear molded splash guards, keyless entry keypad, roof rails, and roof-mounted crossbars and cargo box by THULE^{®1,2}

Remote Access

All-weather floor mats

Dual Headrest DVD by INVISION™¹

Cargo area protector, interior cargo cover and rear bumper protector

Exterior

- Full vehicle cover¹
- Hood protector¹
- Racks and carriers^{1,2}
- Rear bumper protector
- Side window deflectors
- Splash guards
- Sportz[®] tent¹
- Trailer towing accessories
- Wheel lock kit

Interior

- All-weather and premium carpeted floor mats
- Ash cup/coin holders
- Auto-dimming rearview mirror
- Cargo organizers and protectors
- First aid and roadside assistance kits¹
- In-vehicle safe¹
- Interior light kit
- Leather-trimmed interior seating¹
- Tablet cradle¹

Electronics

- Dual headrest DVD¹
- Keyless entry keypad
- Remote Access
- Remote start systems
- Vehicle Security System
- Warning sensor systems¹

¹Ford Licensed Accessory. ²Consult owner's manual for details on roof rack weight limits.



Go Further

ford.com

Follow Ford:



New Vehicle Limited Warranty. We want your Ford Edge ownership experience to be the best it can be. Under this warranty, your new vehicle comes with 3-year/36,000-mile bumper-to-bumper coverage, 5-year/60,000-mile Powertrain Warranty coverage, 5-year/60,000-mile safety restraint coverage, and 5-year/unlimited-mile corrosion (perforation) coverage – all with no deductible. Please ask your Ford Dealer for a copy of this limited warranty.

Roadside Assistance. Covers your vehicle for 5 years or 60,000 miles, so you have the security of knowing that help may be only a phone call away should you run out of fuel, lock yourself out of the vehicle or need towing. Your Ford Dealer can provide complete details on all of these advantages.

Ford Credit. Get the ride you want. Whether you plan to lease or finance, you'll find the choices that are right for you at Ford Credit. Ask your Ford Dealer for details or check us out at fordcredit.com.

Ford Extended Service Plan. For a purchase or lease, the Ford Extended Service Plan (ESP) gives you peace-of-mind protection designed to cover key vehicle components and protect you from the cost of unexpected repairs. Ask your dealer for a Ford ESP, the only service contract backed exclusively by Ford and honored at all Ford Lincoln dealerships.

Insurance Services. Get Ford Motor Company quality in your auto insurance. Our program offers industry-leading benefits and competitive rates. Call 1-877-367-3847, or visit us at fordvip.com for a no-obligation quote. Insurance offered by American Road Services Company (in CA, American Road Insurance Agency), a licensed agency and subsidiary of Ford Motor Company.

Ford Original Accessories will be warranted for whichever provides you the greatest benefit: 24 months/unlimited mileage, or the remainder of your Bumper-to-Bumper 3-year/36,000-mile New Vehicle Limited Warranty. Ford Licensed Accessories (FLA) are warranted by the accessory manufacturer's warranty. FLA are designed and developed by the accessory manufacturer and have not been designed or tested to Ford Motor Company engineering requirements. Contact your Ford Dealer for details and/or a copy of all limited warranties.

Comparisons based on competitive models (class is Midsize Utilities based on Ford segmentation), publicly available information and Ford certification data at time of release. Vehicles may be shown with optional equipment. Features may be offered only in combination with other options or subject to additional ordering requirements/limitations. Dimensions shown may vary due to optional features and/or production variability. Information is provided on an "as is" basis and could include technical, typographical or other errors. Ford makes no warranties, representations, or guarantees of any kind, express or implied, including but not limited to, accuracy, currency, or completeness, the operation of the information, materials, content, availability, and products. Ford reserves the right to change product specifications, pricing and equipment at any time without incurring obligations. Your Ford Dealer is the best source of the most up-to-date information on Ford vehicles.

HD Radio is a proprietary trademark of iBiquity Digital Corp. INVISION is a trademark of VOXX International Corporation. iPhone and Siri are trademarks of Apple Inc., registered in the U.S. and other countries. SiriusXM services require a subscription, sold separately by SiriusXM after trial period. Fees and taxes apply. All fees and programming subject to change. Sirius satellite service is available only to those in the 48 contiguous USA, D.C. and PR (with coverage limitations). Our Internet radio service is available throughout our satellite service area and in AK and HI. Some channels not available in all lineups. Sirius, XM and all related marks and logos are trademarks of Sirius XM Radio Inc. Sony is a registered trademark of the Sony Corporation. The Bluetooth word mark is a trademark of the Bluetooth SIG, Inc. THULE is a registered trademark of Thule Sweden AB. Wi-Fi® is a registered trademark of the Wi-Fi Alliance®.



[Click here to learn more about your Edge](#)