

14 FLEX



Go Further



Impressively spacious **AND** surprisingly efficient.¹

Limited. Ruby Red Metallic Tinted Clearcoat. Available equipment.

¹EPA-estimated ratings: 18 city/25 hwy/20 combined mpg, FWD 3.5L Ti-VCT V6, actual mileage will vary; 17 city/23 hwy/19 combined mpg, AWD 3.5L Ti-VCT V6, actual mileage will vary; 16 city/23 hwy/18 combined mpg, AWD 3.5L EcoBoost® V6, actual mileage will vary.



Performs beyond expectations.

Exciting to behold. The 2014 Ford Flex is equally exciting to drive. Especially when equipped with the twin-turbocharged, direct-injection, 3.5L EcoBoost® V6 engine,¹ which delights with its 365 hp – class-best among V6 engines.² And an EPA-estimated rating of 23 mpg hwy.³ Steering wheel-mounted paddle shifters and Intelligent all-wheel drive (AWD) intensify the spirit of EcoBoost models.

The standard 3.5L Ti-VCT V6 engine features twin independent variable camshaft timing, 287 hp and a noteworthy EPA-estimated rating of 25 mpg hwy.³ Our efficient 6-speed SelectShift® automatic transmission, included with either engine, allows you to shift for yourself or leave its fully automatic operation to Flex.

ECOBOOST¹



TWIN TURBOS

350 LB.-FT.²

365 HP²

PADDLE



SHIFTERS¹

Limited. Kodiak Brown Metallic.
White Suede roof. Available equipment.

¹Available feature. ²Large Utility Vehicles class vs. 2013 competitors. Figures achieved using 93-octane premium unleaded fuel. Premium fuel is recommended for EcoBoost V6, but not required. ³EPA-estimated ratings: 16 city/23 hwy/18 combined mpg, AWD EcoBoost V6, actual mileage will vary; 18 city/25 hwy/20 combined mpg, FWD Ti-VCT V6, actual mileage will vary; 17 city/23 hwy/19 combined mpg, AWD Ti-VCT V6, actual mileage will vary.



7 seats. Infinite appeal.

Wherever you're headed, there's one ideal way to get there. All together – in Flex. Where space reigns supreme, pampering passengers with the most 2nd- and 3rd-row leg room in the class.¹ Environmentally friendly, supportive, soy-based foam used in the seat cushions and seat backs helps conserve limited resources and reduce CO₂ emissions. The 10-way power driver's seat² and power-adjustable pedals² can both include memory,² so Flex can recall your personal settings in an instant. In the 2nd row, choose from a 3-person bench seat or bucket seats² for 2 with a pass-through to the 3rd row. Add the 2nd-row console² for extra storage. Or make it the refrigerated console² for that extra cool factor.

POWERFOLD^{®2}  3RD ROW

HOLDS  X 10

HEATED/COOLED  1ST-ROW SEATS²

*Limited. Charcoal Black leather trim.
Appearance Package. Available equipment.*

¹Large Utility Vehicles class vs. 2013 competitors. ²Available feature.



Powerful adaptability.

Whatever your day brings, Flex swiftly adapts. Its 2nd- and 3rd-row seats fold flat to provide up to 83 cu. ft. of cargo space for your latest finds. With all 3 rows of seating occupied, you can still tuck up to 20 cu. ft.¹ of luggage in back. And accessing the rear cargo area is exceptionally easy thanks to the power liftgate.² It even includes an obstacle-detection sensor to help warn you if the coast isn't clear when closing. With the PowerFold^{®2} 50/50 split 3rd-row seat and either side of the 60/40 split 2nd-row bench seat folded down, you're able to accommodate long cargo items alongside passengers. Flex is all about form and function.

¹Includes 5.0-cu.-ft. rear cargo area storage well. ²Available feature.



Listens when you speak.

Voice-activated Ford SYNC^{®1} with 911 Assist[®] delivers hands-free calls, music and more in response to simple voice commands. Once paired, it can download your contacts and play music from your phone, MP3, USB or iPod.[®] Just touch a button on the steering wheel and say things like "Call: Home" or "Play playlist: Favorites." SYNC AppLink^{™2} lets you control Pandora.[®] iHeartAuto,[™] MLB.com At Bat[®] and select other apps by voice too. SYNC. Say the word.

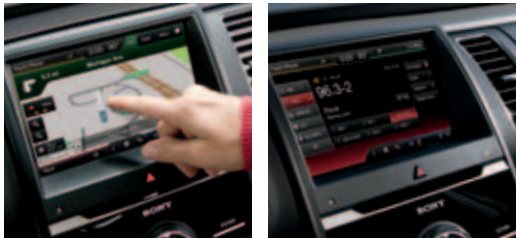
SYNC
POWERED BY **Microsoft**

Limited. Dune leather trim.
SYNC with MyFord Touch. Available equipment.

¹Available feature. Driving while distracted can result in loss of vehicle control. Only use mobile phones and other devices, even with voice commands, when it is safe to do so. Not all features are compatible with all phones. ²SYNC AppLink is available on select models and compatible with select smartphone platforms. Commands may vary by phone and AppLink software. Not available with MyFord Touch.[®]

14FLEX
ford.com





Responds to your touch.

Via the 8" LCD touch screen on SYNC^{®1} with MyFord Touch^{®1}. Simple graphics make it easy to control your phone, entertainment, navigation² and climate. SiriusXM Satellite Radio² includes a 6-month trial subscription that brings you over 130 channels including commercial-free music, sports, news, talk, comedy and entertainment. Pair it with the voice-activated Navigation System², which includes SiriusXM Traffic and Travel Link as part of the trial, and you'll have the ability to look up fuel prices, check local and national weather, and get detailed information on traffic speed, accidents, construction and road closings. The 12-speaker Audio System from Sony^{®2} features HD Radio[™] Technology and even lets you "Tag" songs for purchase later at the iTunes[®] Store.



Limited. Charcoal Black leather trim. SYNC with MyFord Touch. Available equipment.

¹Available feature. Driving while distracted can result in loss of vehicle control. Only use SYNC/MyFord Touch/other devices, even with voice commands, when it is safe to do so. Some features may be locked out while the vehicle is in gear. Not all features are compatible with all phones. ²Available feature.



Looks out for you.

As you're driving, BLIS® (Blind Spot Information System) with cross-traffic alert¹ helps keep you aware of other vehicles. A light in your sideview mirror² indicates when traffic is detected in a blind spot. As you slowly back out of a parking spot or driveway, the system is also designed to alert you to vehicles approaching from either side with a sound, a message center warning and the sideview mirror light.

Adaptive cruise control and collision warning with brake support¹ helps reduce stress by maintaining your choice of preset gap from the vehicle in front of you. In addition, if the system detects a potential collision, it can flash a warning across your windshield, sound an alarm, pre-charge the brakes and increase brake-assist sensitivity to provide full responsiveness when you do brake.

Limited. Tuxedo Black Metallic. Available equipment.

BLIS WITH CROSS-TRAFFIC ALERT¹



ADAPTIVE CRUISE CONTROL¹



29

44

56

66 yds.



Driver-assist features are supplemental and do not replace the driver's judgment.
¹Available feature. ²BLIS replaces standard integrated blind spot mirrors.

[Click here to see Flex parallel park.](#)



Surprises all around.

Starting with a sky view in all 3 rows – courtesy of the multipanel Vista Roof^{®1} – perfect for nurturing their perpetual sense of wonder. Flex with active park assist¹ helps take the stress out of parallel parking by steering itself into the spot for you. Intelligent Access with push-button start¹ lets you get going without inserting a key. In the expansive 2nd row, passengers can grab a chilled beverage or frozen treat from the refrigerated console¹ as they recline in heated bucket seats¹. And the MyFord Touch^{®1} media hub powers up most of your mobile devices as you travel. Surprises? Flex has more than a few.

¹Available feature.

Encourages freedom of expression.

Flex always makes a statement. Perhaps its boldest: the Appearance Package. New for 2014, it's available with your choice of a Tuxedo Black Metallic-painted or monochromatic roof. Combine its 20" machined aluminum wheels and Tuxedo Black Metallic-painted sideview mirror caps with any of the 9 exterior colors, and people are sure to take notice. Inside, Charcoal Black leather-trimmed seats are accented with gray perforated inserts. Meteorite Black bezels set off the perforated leather-wrapped steering wheel. Exclusive front floor mats, and unique graphic appliqués on the instrument panel and door trim, polish off the look.



Limited. Mineral Gray Metallic. Tuxedo Black Metallic roof. Appearance Package. Available equipment.

14FLEX
ford.com



Puts your mind at ease.

For the 5th year in a row,¹ Flex has attained the highest possible rating from the Insurance Institute for Highway Safety. It's a "2013 IIHS Top Safety Pick." And it's no wonder, with reassuring standards like AdvanceTrac[®] with RSC[®] (Roll Stability Control™), which helps you avoid skidding or fishtailing.² And our Safety Canopy[®] System, which increases protection with side-curtain airbags that deploy to cover all 3 rows. Flex also offers our industry-first³ inflatable 2nd-row safety belts⁴ to help hold outboard passengers securely in place. Please turn the page for a comprehensive list of Safety & Security features engineered into every 2014 Flex.

2013 IIHS  TOP SAFETY PICK

INFLATABLE  2ND-ROW SAFETY BELTS⁴

AWD⁴  TRACTION

SEL. White Platinum Metallic Tri-coat.
Available equipment.

¹2009, 2010, 2011, 2012 and 2013 model years. ²Remember that even advanced technology cannot overcome the laws of physics. It's always possible to lose control of a vehicle due to inappropriate driver input for the conditions. ³Ford Motor Company offered the world's first automotive production vehicle with inflatable 2nd-row safety belts. ⁴Available feature.



SEL in Ruby Red Metallic Tinted Clearcoat customized with smoked hood and side window deflectors, rear spoiler, front molded splash guards, roof side rails, plus roof crossbars and roof-mounted cargo box by THULE®¹

All-weather floor mats

Remote access

Rear spoiler

Dual head restraint DVD by INVISION™¹

Exterior

Flat splash guards
Full vehicle covers¹
Locking fuel plug
Racks and carriers¹
Sportz® tent¹
Trailer towing accessories
Wheel lock kit

Interior

Ash cup/coin holders
Cargo organizers and protectors
Carpeted floor mats
Conversation mirror
Door sill plates
Interior light kit
Leather-trimmed interior seating¹

Electronics

DVD rear-seat entertainment systems¹
Remote start systems
Vehicle Security System
Warning sensor systems¹

Flex Specifications

Standard Features

Mechanical

3.5L Ti-VCT V6 with 6-speed SelectShift® automatic transmission with shifter button activation
4-wheel disc Anti-Lock Brake System (ABS)
Battery Management System
Electric power-assisted steering
Front-wheel drive (FWD)

Seating

1st-row bucket seats
2nd-row 60/40 split fold-flat bench; autofold function on 40 section
3rd-row manual fold-in-floor 50/50 split bench

Interior

1st-row center console with armrest, storage and 2 cupholders
12-volt powerpoints accessible in all rows (4)

Accessory delay

Auto-dimming rearview mirror
Autolock power door locks
Cabin air filter
Carpeted floor mats in 1st and 2nd rows
Coat hooks in 2nd row (2)
Cruise control

Driver and front-passenger sun visors with illuminated vanity mirrors

Grab handles (3)

Grocery bag hooks in cargo area

Leather-wrapped shifter

Leather-wrapped steering wheel with cruise, audio and 5-way MyFord® controls

Manual tilt/telescoping steering column

Map pockets in 1st-row seat backs

Overhead console with map lights and sunglasses holder

Power windows with one-touch-up/-down driver's side window feature

Reading lamps for 2nd- and 3rd-row passengers

Exterior

Autolamp automatic headlamps with wiper-activated headlamps feature

Chrome dual exhaust tips

Easy Fuel® capless fuel filler

Privacy glass on 2nd- and 3rd-row windows and liftgate

Rear-window defroster

Reverse Sensing System

Windshield wipers – Intermittent front (speed-sensitive) and 2-speed rear

Safety & Security

Personal Safety System™ for driver and front passenger includes dual-stage front airbags² safety belt pretensioners, safety belt energy-management retractors, safety belt usage sensors, driver's seat position sensor, crash severity sensor, restraint control module and Front-Passenger Sensing System

3-point safety belts for all seating positions

4-way adjustable head restraints

AdvanceTrac® with RSC® (Roll Stability Control™) and traction control

Battery saver

Belt-Minder® front safety belt reminder

Child-safety rear door locks

Front-seat side airbags²

Illuminated Entry System

Integrated keyhead transmitter remotes (2)

LATCH – Lower Anchors and Tether Anchors for Children (3)

MyKey®

Safety Canopy® System with side-curtain airbags² and rollover sensor

SecuriCode™ invisible keypad

SecuriLock® Passive Anti-Theft System

Side-intrusion door beams

SOS Post-Crash Alert System™

Tire Pressure Monitoring System (excludes spare)

Engines/EPA-Estimated Ratings & Dimensions

3.5L Ti-VCT V6

287 hp @ 6,500 rpm
254 lb.-ft. of torque @ 4,000 rpm

6-speed SelectShift automatic
FWD 18 city/25 hwy/20 combined mpg
AWD 17 city/23 hwy/19 combined mpg

3.5L EcoBoost® V6

365 hp @ 5,500 rpm³
350 lb.-ft. of torque @ 3,500 rpm³

6-speed SelectShift automatic with steering wheel-mounted paddle shifters
AWD 16 city/23 hwy/18 combined mpg

Exterior

Wheelbase	117.9"
Length	201.8"
Height – Excluding options	68.0"
Height – Including options	69.3"
Width – Excluding mirrors	75.9"
Width – Including mirrors	88.8"
Width – Mirrors folded	80.1"

Interior

Head room	1st/2nd/3rd Row 41.8"/40.5"/38.7"
Shoulder room	58.4"/58.1"/50.8"
Hip room	55.5"/55.0"/41.1"
Leg room	40.8"/44.3"/33.3"

Cargo Volume (cu. ft.)

Behind 1st row	83.2
Behind 2nd row	43.2
Behind 3rd row	20.0 ⁴



SE

Equipment Group 100A
Includes all standard features, plus:

Seating

6-way power driver's seat with 2-way manual front-passenger seat

7-passenger seating

Cloth seating

Interior

AM/FM stereo/single-CD player with MP3 capability and 6 speakers

Embossed metal instrument panel appliqué

Ford SYNC® voice-activated, in-vehicle connectivity system

MyFord® with 4.2" color LCD displays in instrument cluster and center stack, and media hub with auxiliary input jack

Single-zone air conditioning with 2nd- and 3rd-row adjustable vents

Exterior

17" painted aluminum wheels with P235/60R17 BSW tires

Auto headlamps – Halogen, wipers-activated

Black, manually folding, power sideview mirrors with integrated blind spot mirrors

Body-color-painted door handles

Chrome grille

Available Options

2nd-row rear-outboard inflatable safety belts

All-weather floor mats

Black roof-rack side rails

Dual head restraint DVD by INVISION™²

SiriusXM Satellite Radio with 6-month trial subscription

SEL

Equipment Group 200A
Includes select SE features, plus:

Mechanical

Heavy-duty brake calipers

Seating

1st-row heated bucket seats, including 10-way power driver's seat with power recline and lumbar and 6-way power passenger seat with manual recline and lumbar

Interior

Cargo net

Dual-zone electronic automatic temperature control

MyFord Touch® with two 4.2" configurable LCD displays in instrument cluster, 8" LCD touch screen in center stack, and media hub with 2 USB ports, SD card reader and audio/video input jacks

San Macassar wood-appearance appliqué on instrument panel and door-trim panels

SiriusXM Satellite Radio with 6-month trial subscription

SYNC voice-activated, in-vehicle connectivity system with SYNC Services for Traffic, Directions and Information³

Universal garage door opener

Exterior

18" painted aluminum wheels with P235/60R18 BSW tires

Black-painted, power, heated, manually folding sideview mirrors with integrated blind spot mirrors

Bright stainless steel beltline

Fog lamps with bright bezels

"SEL" badge

Available Equipment Groups

Equipment Group 201A – 110-volt power outlet + body-color liftgate appliqué + power liftgate and rear view camera

Equipment Group 202A – Includes all content of 201A + adjustable pedals with memory + BLIS® (Blind Spot Information System) with cross-traffic alert + 1st- and 2nd-row leather-trimmed seating with 3rd-row vinyl + driver's seat with memory + sideview mirrors with security approach lamps + Premium Audio System with 7 speakers + Remote Start System

Available Options & Packages

2nd-row 40/40 reclining bucket seats

2nd-row console (requires 2nd-row 40/40 reclining bucket seats and 201A or 202A)

2nd-row-outboard inflatable safety belts

20" bright-painted aluminum wheels with P255/45R20 all-season BSW tires (requires 201A or 202A)

All-weather floor mats

Appearance Package includes Tuxedo Black Metallic-painted roof (monochromatic roof available⁴) and sideview mirror caps, 20" machined aluminum wheels with premium painted pockets, Charcoal Black leather-trimmed seats with gray perforated inserts, perforated leather-wrapped steering wheel with Meteorite Black bezels, unique graphic instrument panel and door-trim appliqué, and 1st-row floor mats with unique logo (requires 202A)

Class III Trailer Tow Package includes hitch receiver with 4,500-lb. rating, 7-/4-pin connector, engine oil cooler and trailer sway control

Dual head restraint DVD by INVISION²

Intelligent all-wheel drive (AWD)

Multipanel Vista Roof® (requires 201A or 202A)

Silver roof-rack side rails (black with Appearance Package with Tuxedo Black roof)

Two-tone roof

Voice-activated Navigation System (requires 202A)

SEL. Charcoal Black cloth trim. Available equipment.

SEL. Dual-zone electronic automatic temperature control.

SEL. Dune leather trim.¹ 2nd-row bucket seats.¹ 2nd-row console.¹

SEL. Cargo net.



17" Painted Aluminum
Standard: **SE**



18" Painted Aluminum
Standard: **SEL**



20" Bright-Painted Aluminum
Available: **SEL**



20" Machined Aluminum with
Premium Painted Pockets
Included: **Appearance Package**

¹Available feature. ²Ford Licensed Accessory. ³SYNC Services varies by trim level and model year and may require a subscription. Traffic alerts and turn-by-turn directions available in select markets. Message and data rates may apply. Ford Motor Company reserves the right to change or discontinue this product service at any time without prior notification or incurring any future obligation. ⁴Late availability.

Limited

Equipment Group 300A

Includes select SEL features, plus:

Seating

1st-row perforated leather-trimmed heated bucket seats, including 10-way power driver's seat with memory and power lumbar, and 6-way power passenger seat with manual lumbar

2nd-row perforated leather-trimmed (outboard positions) 60/40 split bench seat with flip-out armrest and 2 cupholders

3rd-row vinyl 50/50 split manually folding bench seat

Interior

110-volt power outlet

Ambient lighting in front cupholders, inside front console, front footwells and back of rear console

Black with aluminum insert front door-sill scuff plates

Color-keyed leather-wrapped steering wheel with wood inlay

HD Radio™ Technology

Intelligent Access with push-button start

Power-adjustable pedals with memory

Rear view camera

Remote Start System

Audio System from Sony® with AM/FM stereo/ single-CD player with MP3 capability and 12 speakers in 10 locations

Voice-activated Navigation System featuring SiriusXM Traffic and Travel Link (6-month trial subscription)

Yoho maple woodgrain-appearance appliques on instrument panel and door-trim panels

Exterior

19" painted aluminum wheels with P235/55R19 BSW tires

BLIS® (Blind Spot Information System) with cross-traffic alert

Body-color, power, heated, power-folding sideview mirrors with integrated security approach lamps and memory

Chrome door handles

High-intensity discharge (HID) headlamps

Kast silver lower grille strips

Light-emitting diode (LED) taillamps

"LIMITED" badge

Power liftgate

Rain-sensing windshield wipers

Satin-aluminum grille

Satin-aluminum liftgate appliqué

Available Equipment Groups

Equipment Group 301A – Active park assist + adaptive cruise control and collision warning with brake support + 10-way power heated and cooled front seats + 3rd-row vinyl 50/50 split bench seat with one-touch PowerFold® and tumble with tailgate feature + power-tilt/-telescoping steering column

Equipment Group 302A – 3.5L EcoBoost® V6 + 6-speed SelectShift® automatic with paddle shifters + dual exhaust with chrome tips + Intelligent all-wheel drive (AWD) + 20" polished aluminum wheels with P255/45R20 all-season BSW tires

Equipment Group 303A – Includes all content of 301A + 302A

Available Options & Packages

2nd-row console (requires 2nd-row 40/40 reclining bucket seats)

2nd-row perforated leather-trimmed 40/40 heated reclining bucket seats with autofold

2nd-row-outboard inflatable safety belts

2nd-row refrigerated console (requires 2nd-row 40/40 reclining bucket seats with autofold; n/a with 300A or 302A)

20" polished aluminum wheels with P255/45R20 all-season BSW tires (included with 302A and 303A)

All-weather floor mats

Appearance Package includes Tuxedo Black Metallic-painted roof (monochromatic roof available¹) and sideview mirror caps, 20" machined aluminum wheels with premium painted pockets, Charcoal Black leather-trimmed seats with gray perforated inserts, perforated leather-wrapped steering wheel with Meteorite Black bezels, unique graphic instrument panel and door-trim appliques, and 1st-row floor mats with unique logo

Class III Trailer Tow Package includes hitch receiver with 4,500-lb. rating, 7-/4-pin connector with wiring harness, engine oil cooler (non-EcoBoost only) and trailer sway control

Dual head restraint DVD by INVISION™²

Intelligent all-wheel drive (AWD) (included with 302A and 303A)

Multipanel Vista Roof®

Silver roof-rack side rails (black with Appearance Package with Tuxedo Black roof)

Two-tone roof



Dune leather trim with perforated inserts. Available equipment.

BLIS (Blind Spot Information System) with cross-traffic alert.

2nd-row heated bucket seats.³ 110-volt power outlet.

High-intensity discharge (HID) headlamps.



19" Painted Aluminum
Standard



20" Polished Aluminum
Optional: **300A, 301A**
Included: **302A, 303A**



20" Machined Aluminum with
Premium Painted Pockets
Included: **Appearance Package**

¹Late availability. ²Ford Licensed Accessory. ³Available feature.

Exteriors



White Platinum Metallic Tri-coat



White Suede



Ingot Silver Metallic



Mineral Gray Metallic



Ginger Ale Metallic



Ruby Red Metallic Tinted Clearcoat



Kodiak Brown Metallic



Deep Impact Blue Metallic



Tuxedo Black Metallic

Optional Two-Tone Roof



○ **White Suede roof**
Ruby Red Metallic Tinted Clearcoat lower



● **Ingot Silver Metallic roof**
Deep Impact Blue Metallic lower



● **Tuxedo Black Metallic roof**
Ingot Silver Metallic lower

Interiors



1 Dune Cloth



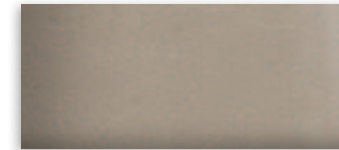
2 Charcoal Black Cloth



3 Dune Cloth



4 Charcoal Black Cloth



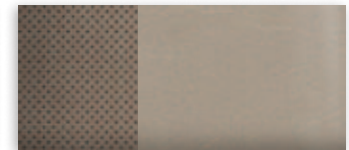
5 Dune Leather



6 Charcoal Black Leather



7 Charcoal Black Leather with Gray Perforated Inserts



8 Dune Leather with Perforated Inserts



9 Charcoal Black Leather with Perforated Inserts

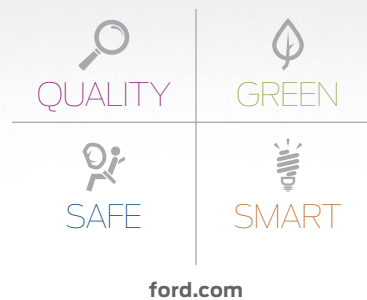
Exteriors	Interiors									Two-Tone Roof ¹	
	SE	SEL				Limited					
White Platinum Metallic Tri-coat ^{2,3}		3	4	5	6	7	7	8	9	●	●
White Suede ³	1	2	3	4	5	6	7	7	8	9	●
Ingot Silver Metallic ³	1	2	3	4	5	6	7	7	8	9	○
Mineral Gray Metallic ³	1	2	3	4	5	6	7	7	8	9	○
Ginger Ale Metallic ^{3,4}	1	2	3	4	5	6	7	7	8	9	○
Ruby Red Metallic Tinted Clearcoat ^{2,3}			3	4	5	6	7	7	8	9	○
Kodiak Brown Metallic ³			3	4	5	6	7	7	8	9	○
Deep Impact Blue Metallic ³	1	2	3	4	5	6	7	7	8	9	●
Tuxedo Black Metallic	1	2	3	4	5	6	7	7	8	9	●

¹Two-tone roof available on SEL and LIMITED only. ²Additional charge.

³Tuxedo Black Metallic roof requires Appearance Package.

⁴White Suede roof not available with Dune interior.

Colors are representative only. See your dealer for actual paint/trim options.



New Vehicle Limited Warranty. We want your Ford Flex ownership experience to be the best it can be. Under this warranty, your new vehicle comes with 3-year/36,000-mile bumper-to-bumper coverage, 5-year/60,000-mile Powertrain Warranty coverage, 5-year/60,000-mile safety restraint coverage, and 5-year/unlimited-mile corrosion (perforation) coverage – all with no deductible. Please ask your Ford Dealer for a copy of this limited warranty. **Roadside Assistance.** Covers your vehicle for 5 years or 60,000 miles, so you have the security of knowing that help may be only a phone call away should you run out of fuel, lock yourself out of the vehicle or need towing. Your Ford Dealer can provide complete details on all of these advantages. **Ford Credit.** Get the ride you want. Whether you plan to lease or finance, you'll find the choices that are right for you at Ford Credit. Ask your Ford Dealer for details or check us out at fordcredit.com. **Ford Extended Service Plan.** For a purchase or lease, the Ford Extended Service Plan (ESP) gives you "Peace-of-Mind" protection designed to cover key vehicle components and protect you from the cost of unexpected repairs. Ask your dealer for a Ford ESP, the only service contract backed exclusively by Ford and honored at all Ford Lincoln dealerships. **Insurance Services.** Get Ford Motor Company quality in your auto insurance. Our program offers industry-leading benefits and competitive rates. Call 1-877-367-3847, or visit us at fordvip.com for a no-obligation quote. Insurance offered by American Road Services Company (in CA, American Road Insurance Agency), a licensed agency and subsidiary of Ford Motor Company. **Genuine Ford Accessories** will be warranted for whichever provides you the greatest benefit: 12 months or 12,000 miles (whichever occurs first), or the remainder of your Bumper-to-Bumper 3-year/36,000-mile New Vehicle Limited Warranty. Ford Licensed Accessories (FLA) are warranted by the accessory manufacturer's warranty. FLA are fully designed and developed by the accessory manufacturer and have not been designed or tested to Ford Motor Company engineering requirements. Contact your Ford Dealer for details and/or a copy of all limited warranties.

Comparisons based on 2013/2014 competitive models (class is Large Utility Vehicles), publicly available information and Ford certification data at time of printing. Some features discussed may be optional. Vehicles shown may contain optional equipment. Features shown may be offered only in combination with other options or subject to additional ordering requirements or limitations. Dimensions shown may vary due to optional features and/or production variability. Following release of the PDF, certain changes in standard equipment, options and the like, or product delays may have occurred which would not be included in these pages. Your Ford Dealer is the best source for up-to-date information. Ford Division reserves the right to change product specifications at any time without incurring obligations. **HD Radio** is a proprietary trademark of iBiquity Digital Corp. **iHeartAuto** is a trademark owned by Clear Channel Broadcasting, Inc. All third party uses are authorized under license. **INVISION** is a trademark of Audiovox Corporation. **iPod** and **iTunes** are trademarks of Apple Inc., registered in the U.S. and other countries. **Major League Baseball** trademarks and copyrights are used with permission of MLB Advanced Media, L.P. All rights reserved. **Microsoft** is a registered trademark of Microsoft Corporation. **PANDORA**, the **PANDORA** logo, and the **Pandora** trade dress are trademarks or registered trademarks of Pandora Media, Inc. Used with permission. **SiriusXM** Satellite Radio, **SiriusXM** Traffic and **Travel Link** subscriptions sold separately or as a package after trial period. See **SiriusXM** Customer Agreement for complete terms at siriusxm.com. Fees and programming subject to change. **Sirius** satellite service is available only to those at least 18 years of age in the 48 contiguous USA, DC, and Puerto Rico (with coverage limitations). **Sirius, XM** and all related marks and logos are trademarks of Sirius XM Radio Inc. **Sony** is a registered trademark of the Sony Corporation. **Wi-Fi** is a registered trademark of the Wi-Fi Alliance® **THULE** is a registered trademark of Thule Sweden AB.

Follow Ford:



facebook.com/fordflex



twitter.com/FordFlex



youtube.com/fordflex



gplus.to/FordMotorCompany