



Contents

- ▶ Re-Engineered Suspension & Steering 2
- ▶ Improved Security 3
- ▶ Cargo Van Choices 4
- ▶ Cutaway Capabilities 5
- ▶ Wagon Comforts 6
- ▶ Specifications 7-12

['08 IMPROVEMENTS ▶](#)[VANS ▶](#)[CUTAWAYS ▶](#)[WAGONS ▶](#)[SPECS ▶](#)

2008 E-Series SUPERHEROES

DYNAMIC STRENGTH, VERSATILITY and Built Ford Tough® determination give the new E-Series Cargo Vans, Cutaways and Wagons all the powers they need to help get your jobs done. From moving people and products, to delivering emergency medical care and more, no other line of full-size vans delivers so much flexibility and choice. With every E-Series boasting a GVWR of over 8500 lbs., it's easier than ever to design vehicles that suit your needs. No wonder businesses, community organizations and families have made these hardworking heroes the best-selling vehicles in their class¹ since 1979.

CONTROL

AdvanceTrac® with RSC®
(Roll Stability Control™)²
Re-Engineered Suspension & Steering
NEW Traction Control³

CONFIDENCE

ALL-NEW Brake Systems
AdvanceTrac with RSC²
NEW E-Guard Cargo Protection System™⁴
5-Year/60,000-Mile Powertrain Limited
Warranty + Roadside Assistance⁵

CAPABILITY

The Only Standard Cargo Van V8 in the Class.
Up to 10,000 lbs. Cutaway Towing.⁶
The Only V10 Gas Option in the Class
Higher GVWRs & Segment-Leading GCWRs⁷
7- to 15-Passenger Seating

¹Class is Full-Size Vans. ²Remember that even advanced technology cannot overcome the laws of physics. It's always possible to lose control of a vehicle due to inappropriate driver input for the conditions. AdvanceTrac with RSC is available on E-350 Wagons with the 5.4L Triton V8 only. ³Gas engine applications only. ⁴Available on Commercial Van with 60/40 split side cargo doors. ⁵See dealer for details. ⁶When properly equipped. ⁷Comparison of properly equipped E-150 to 1500 Series Full-Size Vans.


['08 IMPROVEMENTS ▶](#)
[VANS ▶](#)
[CUTAWAYS ▶](#)
[WAGONS ▶](#)
[SPECS ▶](#)

Re-Engineered Suspension & Steering

A revised front suspension system includes redesigned front sway bars to help deliver solid handling. Front and rear shocks are rated to the load range of each model, and tuned to deliver a smooth ride. A new steering gear boost-curve enhances road feel and provides excellent steering feedback to the driver.

NEW Traction Control

This feature is now optional on gas engine applications that do not include Roll Stability Control.™ The system uses the Anti-lock Brake System and engine torque to monitor vehicle speed and wheel slip. If wheel slip is detected, engine torque is automatically optimized to help maintain traction.

2008 E-Series STRENGTH to Meet Every Challenge

AN IMPROVED CHASSIS DELIVERS MORE TOUGHNESS and more comfort in equal measure. Upgrades to the braking, suspension and steering systems offer improved ride and handling, braking performance and load-carrying capability. Now, E-Series maximum GVWR is a best-in-class 14,500 lbs.¹ and the front GAWR tops out at a class-leading 5000 lbs.¹ These enhancements also contribute to overall reliability and durability. In other words, the Vans, Cutaways, Wagons and Stripped Chassis that Americans rely on more than any others just got even better.

ALL-NEW Brake Systems

Larger front and rear rotors and calipers provide a greater swept area for more stopping power. These robust components and new pad materials lower operating temperature while supporting enhanced capability and durability. Standard on every 2008 E-Series.



¹Properly equipped.



NEW E-Guard Cargo Protection System

features reinforced rear- and side-door locks. This segment-exclusive option is available on Commercial Vans with 60/40 split side cargo doors. To provide the highest level of security, the system is designed to be unlocked only with the vehicle key, even on models with remote keyless entry.

NEW Securilock Passive Anti-Theft Ignition System

is designed to help prevent the engine from being started unless a coded key programmed to your vehicle is used. Optional on single rear wheel models only.

['08 IMPROVEMENTS ▶](#)
[VANS ▶](#)
[CUTAWAYS ▶](#)
[WAGONS ▶](#)
[SPECS ▶](#)

2008 E-Series SECURITY Helps Keep the Bad Guys at Bay

WHEN YOUR LIVELIHOOD IS LOCKED UP in your E-Series, you want to know it's protected. That's why new security systems are available for 2008. They include the E-Guard Cargo Protection System,[™] a class-exclusive, factory-installed double-locking system available for cargo van doors. An optional Securilock[®] ignition system is designed to immobilize the van without the right key. It's all part of our never-ending battle to help keep your belongings right where they belong.

NEW Steel-Reinforced Rear License Plate Housing ▶

This rugged enhancement also includes a steel lock cylinder flange. It boosts the tamper resistance of the rear door lock cylinder and locking mechanism. Standard on Vans and Wagons.





New QuietFlex™ III Composite Racks and Bins Package



['08 IMPROVEMENTS](#) ▶ | [VANS](#) ▶ | [CUTAWAYS](#) ▶ | [WAGONS](#) ▶ | [SPECS](#) ▶

2008 E-Series VANS Choices to Conquer New Frontiers

As always, E-Series Vans offer you lots of choices: 4 engine/transmission combinations, the TorqShift® 5-speed automatic with Tow/Haul Mode,² gasoline or diesel power, sliding or swing-out side cargo doors, windows all-around or panel sides, no-charge racks and bins packages, and trade-specific upfitter packages. Available cargo space swallows up to 271 cu. ft. The challenges are out there, and E-Series is ready to boldly go where no van has gone before.

Dedication to Every Vocation

Smart storage solutions help you make the most of your E-Series. Choose from Masterrack® Steel Racks and Bins, the Econo-Cargo® System, or the new QuietFlex™ III Composite Racks and Bins Package, all available at no extra charge.¹ Consult your Ford Dealer on a vocational package specifically designed for your trade.

GVWRS & Payloads

Having too much capacity can be as costly as having too little, and that can mean the difference between profit and loss. So zero in on the capability that fits your business best. Ford offers you a wide range of GVWRS and payloads to help you get exactly what you need.

MAXIMUM CAPABILITIES (LBS.)	GVWR	PAYLOAD ³
E-150 VAN	8520 – 8600	3340
E-250 VAN	8900 – 9000	3670
E-250 EXTENDED VAN	8900 – 9000	3545
E-350 VAN	9500	4110
E-350 EXTENDED VAN	9500	3965

¹To eligible customers under the Ford Commercial Services Program. ²Gas engine applications only. ³Properly equipped.



E-250 Super Duty® Cutaway

A compact design and efficient 4.6L Triton® V8 offer you another choice in the E-Series Cutaway lineup. With its mid-ship fuel tank location, you benefit from enhanced rear load capacity and added capability of an E-250 configuration.

E-350 Super Duty Cutaways

E-350 is a supremely versatile heavy-duty cutaway, offering 3 powertrain choices. 158" and 176" wheelbase chassis are available with a class-leading 5000-lb. front GAWR, and a GVWR increase to 12,500 lbs.

E-450 Super Duty Cutaways

For 2008, E-450 offers a standard 5.4L Triton V8. You can spec giant payloads, and GCWRs up to 20,000 lbs! allow for outstanding towing capability. A new 5000-lb. front GAWR is standard with an optional 6.8L Triton V10 or 6.0L Power Stroke® V8 Turbo Diesel. An available 37-gal. fuel tank provides more usable rear GAWR.

- ['08 IMPROVEMENTS ▶](#)
- [VANS ▶](#)
- [CUTAWAYS ▶](#)
- [WAGONS ▶](#)
- [SPECS ▶](#)

2008 E-Series CUTAWAYS Legions of Warriors at the Ready

THE BIGGEST SELECTION OF VAN-BASED CUTAWAYS can be adapted for nearly any duty – from demanding emergency service or a multitude of trades, to getting kids to school. Their serious capacities, rugged capabilities and Built Ford Tough® reputations have made E-Series the sales leader since 1979.



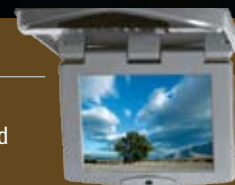
MAXIMUM CAPABILITIES (LBS.)	GVWR	PAYLOAD ¹
E-250 CUTAWAY SRW	8600	4335
E-350 CUTAWAY SRW	9600	4845
E-350 CUTAWAY DRW	10,000 – 12,500	7510
E-450 CUTAWAY DRW	14,050 – 14,500	8980

¹Properly equipped.



Get the Show on the Road ▶

An available Rear-Seat DVD Entertainment System¹ features a 10.4" flip-down screen and can play DVD, VCD, SVCD, CD, CD-R/RW and MP3 formats. A game port, unified remote and 2 sets of wireless stereo headphones are included.



New XLT ▲ Premium Package

For 2008, E-150 7-passenger Regular Length Wagons are available with the XLT Premium Package. It features 1st- and 2nd-row leather-trimmed captain's chairs, a standard 6-way power driver seat, remote keyless entry, a leather-wrapped steering wheel, overhead console, and privacy glass. Special exterior appointments include two-tone paint, forged-aluminum wheels and running boards.

['08 IMPROVEMENTS ▶](#)
[VANS ▶](#)
[CUTAWAYS ▶](#)
[WAGONS ▶](#)
[SPECS ▶](#)

2008 E-Series WAGONS A Hero's Welcome

MAKE WAY FOR AN ABUNDANCE OF ROOM AND COMFORT. E-Series Wagons have generous space for your crew and all their gear. Air conditioning is standard. Seating includes 7-, 8-, 11-, 12-, or 15-passenger² choices, with a center-aisle ship-thru option too. All rear bench seats now have center-position, 3-point, seat-integrated safety belts. A new self-latching system for rear seats makes removal and installation easier than ever. Lots of comfort. Lots of choices. With E-Series Wagons, a grand reception is always part of the bargain.



Keep It Under Control

AdvanceTrac[®] with RSC[®] (Roll Stability Control[™])³ can help in many real-world situations, such as when you're driving on slippery surfaces like snowy, muddy, wet or gravel roads, making an emergency maneuver to avoid something in the road, or even just traveling on uneven surfaces such as in construction zones.

¹Modified Vehicle Engineering (MVE) qualified installed option. See your Ford Dealer for details. ²Passenger and cargo capacity limited by weight and weight distribution. ³Remember that even advanced technology cannot overcome the laws of physics. It's always possible to lose control of a vehicle due to inappropriate driver input for the conditions. AdvanceTrac with RSC is standard on E-350 Wagons with the 5.4L Triton[®] V8.

Specifications

'08 IMPROVEMENTS ▶

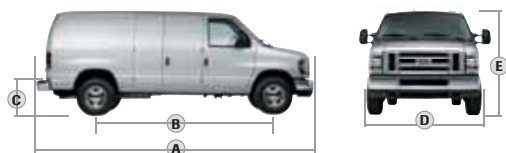
VANS ▶

CUTAWAYS ▶

WAGONS ▶

SPECS ▶

DIMENSIONS



EXTERIOR	E-150 REGULAR LENGTH	E-250/E-350 SUPER DUTY REG. LENGTH	E-250/E-350 SUPER DUTY EXT. LENGTH
A. Overall length	216.7"	216.7"	236.7"
B. Wheelbase	138.0"	138.0"	138.0"
C. Loadfloor height	25.7"	30.1" (Van) 27.4" (Wagon)	30.7" (Van) 31.4" (Wagon)
D. Overall width (excluding mirrors) Overall width (including mirrors)	79.4"	79.4"	79.4"
E. Height	82.1"	83.7" (Van) 83.4" (Wagon)	84.6"
Rear cargo door opening height	46.8"	49.5" (Van) 48.0" (Wagon)	49.5" (Van) 48.0" (Wagon)
Rear cargo door opening width	54.4"	54.3" (Van) 54.4" (Wagon)	53.9" (Van) 54.4" (Wagon)
Side cargo door opening height	47.2"	48.2" (Van) 47.2" (Wagon)	48.1" (Van) 47.2" (Wagon)
Swing-out side cargo door opening width	44.8"	44.8"	44.8"
Sliding side cargo door opening width	39.6"	39.6"	39.6"
INTERIOR 1st Row			
Head room	42.0"	42.0"	42.1" (Van) 42.0" (Wagon)
Shoulder room	68.1"	68.1"	68.1"
Hip room	65.5"	65.5"	65.5"
Leg room	40.0"	40.0"	40.0"
2nd Row (Wagon)			
Head room	40.2"	40.2"	40.2"
Shoulder room	71.7"	71.7"	71.7"
Hip room	66.5"	66.5"	66.5"
Leg room	38.6"	38.6"	38.7"
3rd Row (Wagon)			
Head room	40.1"	40.1"	40.1"
Shoulder room	71.7"	71.7"	71.7"
Hip room	66.8"	66.8"	66.8"
Leg room	40.0"	40.0"	40.0"
4th Row (Wagon)			
Head room	—	38.9"	39.6"
Shoulder room	—	69.4"	69.4"
Hip room	—	66.1"	66.1"
Leg room	—	39.4"	39.4"
5th Row (Wagon)			
Head room	—	—	37.4"
Shoulder room	—	—	67.5"
Hip room	—	—	65.8"
Leg room	—	—	37.0"
Van Only			
Maximum cargo volume (cu. ft.) behind 1st row	230.6	230.6	271.3

MAXIMUM LOADED TRAILER WEIGHT¹ (lbs.)

AUTOMATIC TRANSMISSION

WAGON

Engine	Axle Ratio	GCWR (lbs.)	E-150	E-350 SUPER DUTY*	E-350 SUPER DUTY EXTENDED
4.6L SOHC V8	4.10	12,000	6100	—	—
5.4L SOHC V8	3.55	12,000	6000	—	—
	3.73	13,000	7000	6700	6500
6.0L V8 Diesel	3.55	16,000	—	9000	—
	4.10	20,000	—	10,000	—

VAN²

Engine	Axle Ratio	GCWR (lbs.)	E-150	E-250	E-250 EXTENDED	E-350 SUPER DUTY	E-350 SUPER DUTY EXTENDED
4.6L SOHC V8	3.73	11,500	6000	6000	5900	—	—
	4.10	12,000	6500	6500	6400	—	—
5.4L SOHC V8	3.55	12,000	6500	—	—	—	—
	3.73	13,000	7500	7400	7300	7400	7200
	4.10	13,000	—	—	—	7400	7200
6.8L SOHC V10	3.73	15,000	—	—	—	9200	9000
	4.10	18,500	—	—	—	10,000	10,000
6.0L V8 Diesel	3.55	16,000	—	—	—	9600	9400
	4.10	20,000	—	—	—	10,000	10,000

CUTAWAY³

Engine	Axle Ratio	GCWR (lbs.)	E-250 SRW	E-350 SRW	E-350 DRW	E-450 DRW
4.6L SOHC V8	4.10	12,000	7500	—	—	—
5.4L SOHC V8	4.10	13,000	—	8000	7800	—
	4.56	14,050	—	—	—	8500
6.8L SOHC V10	4.10	18,500	—	10,000	10,000	—
	4.56	20,000	—	—	—	10,000
6.0L V8 Diesel	4.10	20,000	—	—	10,000	10,000

¹Maximum capabilities shown are for properly equipped vehicles with required equipment and a 150-lb. driver. Weight of additional options, equipment, passengers and cargo must be deducted from this weight. For additional information, see your Ford Dealer. ²For maximum trailer weights with Crew Van, deduct 200 lbs. from the weights above (except with 18,500 lbs. and 20,000 lbs. GCWR). ³Cutaway ratings are based on incomplete vehicle. Final vehicle manufacturer weights and ratings will vary due to upfit and modification requirements.

FORD'S MOST RUGGED TRANSMISSION

Proven on Super Duty Chassis Cabs and Pickups, the available 5-speed automatic TorqShift[®] transmission is designed for the high torque outputs of powerful E-Series engines. It's also improved for 2008 with an enhanced torque converter, as well as stronger low-end and overdrive gear sets. An innovative Tow/Haul Mode⁴ reduces gear hunting when towing and uses engine braking when descending steep grades.

⁴Tow/Haul Mode available with gas engine applications only.



Comparisons based on 2007 competitive models, publicly available information and Ford certification data at time of release. Some features discussed may be optional. Vehicles shown may contain optional and aftermarket upfit equipment. Features shown may be offered only in combination with other options or subject to additional ordering requirements or limitations. Dimensions and capacity ratings shown may vary due to optional features and/or production variability. Following publication of the catalog, certain changes in standard equipment, options and the like, or product delays may have occurred which would not be included in these pages. Your Ford Dealer is the best source for up-to-date information. Ford Division reserves the right to change product specifications at any time without incurring obligations. Body Manufacturers are responsible for compliance certification of the completed vehicle. The Ford New Truck Limited Warranty and any government certification made by Ford shall cover only the vehicle as manufactured by Ford and shall not extend to any addition, modification or change of or to the vehicle by the Ford Authorized Pool Account.

Specifications

'08 IMPROVEMENTS ▶

VANS ▶

CUTAWAYS ▶

WAGONS ▶

SPECS ▶

ENGINES

6.0L POWER STROKE® V8 TURBO DIESEL



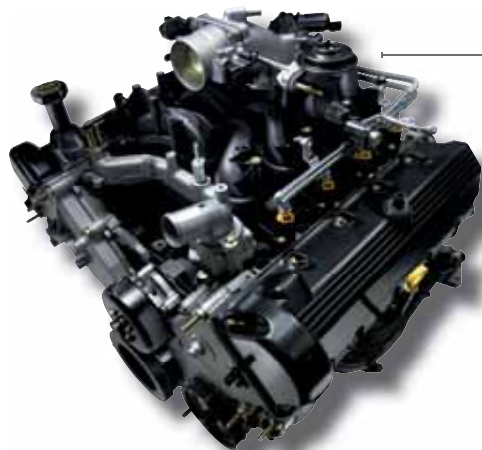
This proven workhorse pumps out 235 hp and generates an impressive 440 lb.-ft. of torque. Its Electronic Variable Response Turbo (EVRT®) helps deliver low-speed response, plus steep-grade and high-altitude performance. Cast-iron block and heads withstand the combustion pressures of peak diesel operation. The robust design also features a stiffened bedplate which enhances durability and reduces noise, vibration and harshness (NVH). The Power Stroke is backed by a 5-year/100,000-mile limited warranty.¹

6.8L TRITON® V10

When the going gets tough, the tough opt for an available 6.8L Triton V10 with best-in-class gas horsepower and torque. Its Electronic Throttle Control modulates torque at the drive wheels for smooth, seamless engine response.



4.6L/5.4L TRITON V8



Brawny Ford engines are at the heart of E-Series versatility and capability. E-Series is the only cargo van in its class to come with a standard V8: the 4.6L Triton. Every E-Series gas engine features a silent-design cam drive for smooth, quiet operation, plus a fail-safe cooling system and a 100,000-mile scheduled tune-up interval.² Step up to the 5.4L Triton V8 to get extra punch for many high-capacity applications. Its proven SOHC architecture pumps out 255 hp and 350 lb.-ft. of torque across a wide powerband.

AVAILABLE ENGINE COMPARISONS

	4.6L SOHC TRITON V8	5.4L SOHC TRITON V8	6.8L SOHC TRITON V10	6.0L POWER STROKE V8 TURBO DIESEL
Horsepower (hp @ rpm)	225 @ 4800	255 @ 4500	305 @ 4250	235 @ 3300
Torque (lb.-ft. @ rpm)	286 @ 3500	350 @ 2500	420 @ 3250	440 @ 2000

¹See your Ford Dealer for details. ²Under normal driving conditions with routine fluid and filter changes.

Specifications

'08 IMPROVEMENTS ▶

VANS ▶

CUTAWAYS ▶

WAGONS ▶

SPECS ▶

E-SERIES WAGON FEATURES & OPTIONS

E-150 XL					
E-150 XLT					
E-350 SUPER DUTY® XL					
E-350 SUPER DUTY XLT					
MECHANICAL					
●	●	—	—	4.6L Triton® V8 engine (4-speed automatic overdrive transmission)	
○	○	●	●	5.4L Triton V8 engine (4-speed automatic overdrive transmission)	
—	—	○	○	6.0L Power Stroke® V8 Turbo Diesel engine (5-speed automatic TorqShift® transmission; Regular Length only)	
—	—	●	●	AdvanceTrac® with RSC® (Roll Stability Control™) (requires 5.4L engine)	
○	○	○	○	Alternator — 135-amp (5.4L engine only)	
○	○	○	○	Battery — Heavy-duty auxiliary (gas engines only)	
○	○	○	○	Engine block heater (standard with diesel engine)	
○	○	○	○	Trailer Tow Package — Class II/III/IV	
○	○	—	—	Traction Control (gas engines only)	
SAFETY/SECURITY					
●	●	●	●	Airbags ¹ — Driver and front-passenger	
●	●	●	●	Belt-Minder® safety belt reminder	
○	○	○	○	Daytime running lamps	
●	●	●	●	Dual-note horn	
●	●	●	●	Power 4-wheel disc brakes with Anti-lock Brake System (ABS)	
○	○	○	○	Remote keyless-entry system with panic alarm and illuminated entry (requires Power Windows and Locks Group)	
○	○	○	○	SecuriLock® passive anti-theft ignition system	
●	●	●	●	Tire Pressure Monitoring System	
SEATING					
○	—	●	—	Vinyl seating	
—	●	○	●	Cloth seating	
—	●	—	—	Leather-trimmed seating (requires XLT Premium Package)	
—	○	—	○	Power driver seat — 6-way with manual lumbar	
●	—	—	—	8 passengers: (2) front bucket seats; (2) 3-passenger rear bench seats	
—	●	—	—	8 passengers: (2) front captain's chairs; (2) 3-passenger rear bench seats	
—	—	—	○	11 passengers: (2) front captain's chairs; (3) 3-passenger rear bench seats (Extended Length only)	
—	—	●	—	12 passengers: (2) front bucket seats; (2) 3-passenger rear bench seats; (1) 4-passenger rear bench seat (Regular Length only)	
—	—	—	●	12 passengers: (2) front captain's chairs; (2) 3-passenger rear bench seats; (1) 4-passenger rear bench seat (Regular Length only)	
—	—	●	—	15 passengers: (2) front bucket seats; (3) 3-passenger rear bench seats; (1) 4-passenger rear bench seat (Extended Length only)	
—	—	—	●	15 passengers: (2) front captain's chairs; (3) 3-passenger rear bench seats; (1) 4-passenger rear bench seat (Extended Length only)	
—	●	—	—	7 passengers: (4) leather-trimmed captain's chairs for 1st and 2nd rows; (1) 3-passenger rear bench seat (requires XLT Premium Package)	
—	—	○	○	11-passenger Center Aisle Seating Prep Package ² (Regular Length only)	
—	—	○	○	14-passenger Center Aisle Seating Prep Package ² (Extended Length only)	

● Standard ● Select Availability ○ Optional — Not Available

¹Always wear your safety belt and secure children in the rear seat.

²Seating system upfit available at additional charge.

E-150 XL					
E-150 XLT					
E-350 SUPER DUTY® XL					
E-350 SUPER DUTY XLT					
APPEARANCE/COMFORT/CONVENIENCE					
●	●	●	●	16" steel wheels with full sport wheel covers	
○	○	○	○	16" forged-aluminum wheels (requires gas engine)	
●	●	●	●	Air conditioning (front only)	
○	●	○	●	Air conditioning — High-capacity (front and rear; standard on XL Extended Length)	
●	—	●	—	AM/FM stereo with digital clock and 4 speakers	
○	●	○	●	AM/FM stereo/single-CD player with digital clock and 4 speakers (XL); 6 speakers (XLT)	
—	○	—	○	Premium Plus CD-6 — AM/FM stereo/6-disc in-dash CD changer with digital clock and 6 speakers	
●	—	●	—	Bumper — Front and rear Black-painted	
●	●	●	●	Bumper — Front and rear contour, chrome	
○	—	○	—	Bumper — Rear step Black, includes Class I Trailer Tow Prep (n/a with Exterior Upgrade Package)	
○	○	○	○	Bumper — Rear step chrome, includes Class I Trailer Tow Prep (requires Exterior Upgrade Package on XL)	
○	●	○	●	Cruise control	
●	●	●	●	Engine cover console — Slim-line	
○	○	○	○	Engine cover console — Deluxe with storage and 4 cupholders	
○	—	○	—	Exterior Upgrade Package — Includes chrome bumpers and grille surround; and dual sealed-beam headlamps	
●	○	○	○	Floor covering — Full-length vinyl	
●	●	●	●	Floor covering — Full-length carpet	
●	●	●	●	Floor mats — Carpeted	
○	●	○	●	Interior Upgrade Package — Includes full-length carpeting, high-level side/rear cargo door-trim panels, cloth seats, dash absorber, headlamps-on alert chime, front carpeted floor mats, Insulation Package, and Power Windows and Locks Group	
●	—	●	—	Mirrors — Manual-adjustable sideview	
—	●	—	●	Mirrors — Power-adjustable sideview	
—	○	—	○	Mirrors — Telescoping trailer tow sideview	
○	○	○	○	Overhead console (requires remote keyless entry)	
●	●	●	●	Power points — 1 in instrument panel, 1 rear of driver	
●	●	●	●	Power Windows and Locks Group	
○	○	○	○	Privacy glass	
○	○	○	○	Reverse Sensing System	
○	○	○	○	Running boards	
○	○	○	○	Side cargo door — Sliding solid panel	
●	●	●	●	Tilt steering wheel	
—	●	—	●	Visors — Cloth, illuminated, with driver map strap	
●	●	●	●	Windshield wipers — Front, interval	
—	○	—	—	XLT Premium Package — Includes leather-trimmed captain's chairs for 1st and 2nd rows, power driver seat, remote keyless entry, leather-wrapped steering wheel, privacy glass, forged-aluminum wheels, overhead console, running boards and two-tone exterior paint	
FACTORY-INVOCED ACCESSORIES					
○	○	○	○	Power Code™ Remote Start System (requires Power Windows and Locks Group)	

WHEELS



16" Full Sport Wheel Cover



16" Forged-Aluminum

Specifications

'08 IMPROVEMENTS ▶

VANS ▶

CUTAWAYS ▶

WAGONS ▶

SPECS ▶

E-SERIES VAN FEATURES & OPTIONS

E-150 COMMERCIAL		
E-250 COMMERCIAL		
E-350 SUPER DUTY COMMERCIAL		
MECHANICAL		
● ● —	4.6L Triton® V8 engine	
○ ○ ●	5.4L Triton V8 engine	
— — ○	6.8L Triton V10 engine	
— — ○	6.0L Power Stroke® V8 Turbo Diesel engine	
● ● ●	4-speed automatic overdrive transmission	
— — ○	5-speed automatic TorqShift® transmission with overdrive and Tow/Haul Mode (requires 6.8L engine)	
— — ○	5-speed automatic TorqShift transmission with overdrive (requires 6.0L)	
○ ○ ○	Alternator — 135-amp (5.4L and 6.8L engines only)	
— — ○	Alternator — Dual-system 140/120-amp (diesel engine only)	
— — ○	Alternator — 140-amp (diesel engine only)	
○ ○ ●	Auxiliary fuel port ¹	
○ ○ ○	Battery — Heavy-duty auxiliary (gas engines only)	
○ ○ ○	Engine block heater ²	
● ● ●	Engine oil cooler	
— ○ ○	Front GAWR — One-up ³	
— — ○	Front GAWR — Maximum up to 4600 lbs. (Fleet only; included with Ambulance Package)	
○ ○ ○	Traction Control (gas engines only)	
SAFETY/SECURITY		
● ● ●	Airbags ⁴ — Driver and front-passenger	
● ● ●	Belt-Minder safety belt reminder	
○ ○ ○	Daytime running lamps	
● ● ●	Dual-note horn	
● ● ●	E-Guard Cargo Protection System™ and side-door security system	
● ● ●	Power 4-wheel disc brakes with Anti-lock Brake System (ABS)	
○ ○ ○	SecuriLock passive anti-theft ignition system	
● ● ●	Tire Pressure Monitoring System	
SEATING		
● ● ●	Dual vinyl front bucket seats	
○ ○ ○	Dual cloth front bucket seats	
○ ○ ○	Dual cloth front captain's chairs ⁵	
○ ○ ○	Power driver seat — 6-way (requires captain's chairs)	
APPEARANCE/COMFORT/CONVENIENCE		
● ● ●	16" steel wheels with full sport wheel covers	
○ ○ ○	16" forged-aluminum wheels (requires gas engine)	
● ● ●	Air conditioning (front only)	
○ ○ ○	Air conditioning — High-capacity (front and rear)	
● ● ●	AM/FM stereo with digital clock	
○ ○ ○	AM/FM stereo/single-CD player with digital clock	
○ ○ ○	Radio delete	
● ● ●	Bumpers — Front and rear contour, Black-painted	
● ● ●	Bumpers — Front and rear contour, chrome	
● ● ●	Bumper — Rear step Black, includes Class I Trailer Tow Prep	
● ● ●	Bumper — Rear step chrome, includes Class I Trailer Tow Prep	
○ ○ ○	Cruise control	
○ ○ ○	Engine cover console — Deluxe with storage and 4 cupholders	
○ ○ ○	Floor covering — Front and rear vinyl	
● ● ●	Light and Convenience Group — Includes courtesy light switches on all doors, warning chime, and headlamps-on alert chime	
○ ○ ○	Mirrors — Aero-style, manual-adjustable sideview	
● ● ●	Mirrors — Aero-style, power-adjustable sideview ⁶	
● ● ●	Mirrors — Telescoping trailer tow, manual-adjustable sideview	
○ ○ ○	Mirrors — Telescoping trailer tow, power-adjustable sideview ⁷	
○ ○ ○	Power Group (door locks, windows, sideview mirrors, remote keyless-entry system)	
● ● ●	Power points — 1 in instrument panel, 1 rear of driver	
○ ○ ○	Privacy glass ⁸	
○ ○ ○	Reverse Sensing System	
○ ○ ○	Running boards	
○ ○ ○	Side cargo door — Sliding solid panel	
● ● ●	Side cargo doors — Swing-out 60/40 doors	
● ● ●	Tilt steering wheel	
○ ○ ○	Windows — Fixed rear cargo door glass	
○ ○ ○	Windows — Fixed side/fixe rear cargo door glass	
○ ○ ○	Windows — Swing-out side/fixe rear cargo door glass	
○ ○ ○	Windows — All around (includes swing-out side/fixe rear cargo door glass)	
● ● ●	Windshield wipers — Front, interval	

E-150 COMMERCIAL		
E-250 COMMERCIAL		
E-350 SUPER DUTY COMMERCIAL		
PACKAGES⁹		
— — ○	Ambulance Prep Package — Auxiliary Heater/AC Connector, 4.10:1 limited-slip axle, dual alternators, dual-note horn, floor pan extended side and rear, fixed side/rear door tinted glass, front vinyl headliner with HIC extension, maximum front GAWR, modified vehicle wiring kit, and vinyl sun visors	
○ ○ ○	Crew Van Package — 2nd-row vinyl bench seat, metal-mesh bulkhead, partial headliner, full B-pillar trim panels, low-series (polypropylene) side door and back door-trim panels, LH lower trim panel behind driver seat, restraints with metal retractor cover for 2nd-row bench seat, pull handle on 40% side door and RH back door	
○ ○ ○	Crew Van Interior Upgrade Package — 2nd-row cloth bench seat, full-length carpeting, dual cloth captain's chairs, cloth sun visors, carpeted floor mats, dash sound absorbers, full-length cloth headliner, and Power Group	
○ ○ ○	Dome/Cargo Light Kit — 3 additional cargo lights ⁸	
○ ○ ○	No-Charge Econo-Cargo® System — Insulated polyethylene panels covering walls and ceiling, includes bulkhead with lockable door, 2 tracks and tie-down straps	
○ ○ ○	Econo-Cargo Upgrade Package (General Delivery; requires Econo-Cargo System) — 2 wire shelving modules (48" H x 16" D x 49" W), 2 single uprights (48"), 1 double upright (48"), 6 wire shelves (16" x 48"), and 2 wire shelves (12" x 48")	
○ ○ ○	Exterior Upgrade Package — Front and rear contour chrome bumpers, chrome grille surround, dual sealed-beam headlamps, and optional aluminum wheels (requires gas engine)	
● ● ●	Handling Package — Front stabilizer bar, and heavy-duty front and rear shock absorbers	
○ ○ ○	Insulation Package — Full-length headliner, cloth sun visors, upper B-pillar trim panels, polypropylene side door and rear trim panels	
○ ○ ○	Interior Upgrade Package — Full-length carpeting, side/rear cargo door-trim panels, dash sound absorber, full-length headliner, cloth sun visors, full B-pillar trim, dual cloth front captain's chairs, front carpeted floor mats, Insulation Package, and Power Group	
○ ○ ○	Premium Van Group — Dual front captain's chairs, AM/FM stereo/single-CD player with digital clock, Exterior Upgrade Package, Power Group, cruise control, and Insulation Package	
○ ○ ○	No-Charge Racks and Bins Package — Fully installed steel shelving, drawers and cabinets; includes bulkhead with lockable door	
○ ○ ○	No-Charge QuietFlex™ III Composite Racks and Bins Package — Enclosed lockable bin, lockable wheel-well door, 2 deep drawers, 4 shallow drawers, 2 triple hooks, full-length vinyl floor covering, 10 shelf dividers, and composite bulkhead with lockable door	
○ ○ ○	Racks and Bins Upgrade Package 1 (General Contractor; requires Racks and Bins Package) — Ship-thru ladder rack, ladder-rack crossbow	
○ ○ ○	Racks and Bins Upgrade Package 2 (Electrical Contractor/Appliance Repair; requires Racks and Bins Package) — 12-drawer cabinet, tilt shelf, toolbox door (additional), wire spool rack, triple hook (additional), and shelf divider set (additional)	
○ ○ ○	Racks and Bins Upgrade Package 3 (Plumbing/HVAC Service; requires Racks and Bins Package) — 12-drawer cabinet, tilt shelf, and tank rack (3-tank capacity)	
○ ○ ○	Trailer Tow Package — Class II/III/IV — Trailer wiring harness (blade-style female connector), electric brake controller tap-in capability, relay system for backup/B+/running lights, and frame-mounted hitch receiver	
FACTORY-INVOCED ACCESSORIES		
○ ○ ○	Power Code™ Remote Start System (requires Power Group)	

● Standard ● Select Availability ○ Optional — Not Available

Econo-Cargo is a registered trademark of America's Body Company, Inc.

¹Standard on diesel, optional on gas. Not available with 4.6L. ²Included with diesel. ³Computer selected — 4600 lbs. max. ⁴Always wear your safety belt and secure children in the rear seat if equipped. ⁵Available as part of Interior Upgrade Package. ⁶Included as part of Power Group. ⁷Requires Power Group. ⁸Restrictions apply, see dealer for details.

Specifications

'08 IMPROVEMENTS ▶

VANS ▶

CUTAWAYS ▶

WAGONS ▶

SPECS ▶

E-SERIES CUTAWAY/STRIPPED CHASSIS FEATURES & OPTIONS

	E-250 SUPER DUTY® CUTAWAY	E-350 SUPER DUTY CUTAWAY	E-450 SUPER DUTY CUTAWAY	E-350 SUPER DUTY STRIPPED CHASSIS	E-450 SUPER DUTY STRIPPED CHASSIS	
MECHANICAL						
●	—	—	—	—	—	4.6L Triton® V8 engine
—	●	●	●	—	—	5.4L Triton V8 engine
—	○	○	○	—	—	6.8L Triton V10 engine
—	○	○	—	—	—	6.0L Power Stroke® V8 Turbo Diesel engine
●	—	—	—	—	—	4-speed automatic transmission
—	●	●	●	—	—	5-speed automatic TorqShift® transmission with overdrive and Tow/Haul Mode (5.4L and 6.8L engines only)
—	●	●	—	—	—	5-speed automatic TorqShift transmission with overdrive (diesel engine only)
—	○	○	○	○	○	Alternator – 135-amp (5.4L and 6.8L engines only)
—	○	○	—	—	—	Alternator – Dual-system 140/120-amp (diesel engine only)
—	○	○	—	—	—	Alternator – 140-amp (diesel engine only)
—	●	●	●	●	●	Auxiliary fuel port
○	○	○	—	—	—	Battery – Heavy-duty auxiliary, 78-amp (gas engines only)
●	●	●	●	—	—	Electronic Throttle Control (ETC)
○	○	○	○	○	○	Engine block heater ¹
—	●	—	—	—	—	Front GAWR – Maximum (Fleet only) ²
●	—	—	—	—	—	Fuel tank – 35-gallon capacity midship
—	●	○	●	○	○	Fuel tank – 37-gallon capacity aft of axle
—	●	●	●	●	●	Fuel tank – 55-gallon capacity aft of axle (DRW only)
○	○	○	○	○	○	Spare tire and wheel
●	●	●	●	●	●	Steering gear – Heavy-duty
○	○	○	○	○	○	Traction Control (gas engines only)
SAFETY/SECURITY						
●	●	●	—	—	—	Airbags ³ – Driver and front-passenger
●	●	●	—	—	—	Belt-Minder® safety belt reminder
○	○	○	○	○	○	Daytime running lamps
●	●	●	●	●	●	Dual-note horn
●	●	●	●	●	●	Power 4-wheel disc brakes with Anti-lock Brake System (ABS)
○	○	○	—	—	—	Remote keyless-entry system ⁴
○	●	—	●	—	—	SecuriLock® passive anti-theft ignition system (SRW only)
●	●	—	●	—	—	Tire Pressure Monitoring System (SRW only)
SEATING						
○	○	○	—	—	—	Captain's chair – Cloth, driver side only
—	○	○	—	—	—	Captain's chair – Without trim, driver side only
●	●	●	—	—	—	Dual vinyl front bucket seats
○	○	○	—	—	—	Dual cloth front bucket seats
○	○	○	—	—	—	Dual cloth front captain's chairs
—	○	○	—	—	—	Dual front captain's chairs – Without trim
○	○	○	—	—	—	Power driver seat – 6-way (requires front captain's chairs)
—	○	○	—	—	—	Manual Seat Prep Package
—	○	○	—	—	—	Power Seat Prep Package
—	○	○	—	—	—	Manual pedestal with 2-way adjuster
—	—	—	●	●	●	Seats not included (no pedestal)
APPEARANCE/COMFORT/CONVENIENCE						
●	●	—	●	—	—	16" steel wheels (SRW only)
○	○	—	○	—	—	16" White-painted steel wheels (SRW only; requires gas engine)
—	●	●	●	●	●	16" White-painted steel wheels (DRW only)
○	○	—	○	—	—	16" steel wheels with full sport wheel covers (SRW only)
○	○	—	—	—	—	16" forged-aluminum wheels (SRW with gas engine only)
●	●	●	—	—	—	Air conditioning (front)
○	○	○	●	—	—	Air conditioning delete
●	●	●	—	—	—	AM/FM stereo with digital clock
○	○	○	—	—	—	Premium AM/FM stereo/single-CD player with digital clock
○	○	○	—	—	—	Premium Plus CD-6 – AM/FM stereo/6-disc in-dash CD changer with digital clock
○	○	○	●	●	●	Radio delete
○	○	○	—	—	—	Radio Prep Package
●	●	●	—	—	—	Bumper – Front, Black-painted
○	○	○	—	—	—	Bumper – Front, White-painted
○	○	○	—	—	—	Cruise control
●	●	●	—	—	—	Engine cover console – Slim-line
○	○	○	—	—	—	Engine cover console – Deluxe with storage and 4 cupholders
—	○	○	—	—	—	Frame spacers – Alternate lateral
—	○	○	—	—	—	Frame spacers – Standard pattern
○	○	○	—	—	—	Mirror – Interior day/night rearview

	E-250 SUPER DUTY® CUTAWAY	E-350 SUPER DUTY CUTAWAY	E-450 SUPER DUTY CUTAWAY	E-350 SUPER DUTY STRIPPED CHASSIS	E-450 SUPER DUTY STRIPPED CHASSIS	
APPEARANCE/COMFORT/CONVENIENCE (cont.)						
○	○	—	—	—	—	Mirrors – Manual-adjustable sideview
○	○	○	—	—	—	Mirrors – Telescoping trailer tow, manual-adjustable sideview
○	○	○	—	—	—	Mirrors – Telescoping trailer tow, power-adjustable sideview ⁴
●	●	●	●	●	●	Modified vehicle wiring kit and system
●	●	●	—	—	—	Power point – 1 in instrument panel
○	○	○	—	—	—	Power Windows and Locks Group
—	○	○	—	—	—	Pucks – Frame isolator
—	○	○	—	—	—	Right-hand door delete
○	○	○	—	—	—	Running boards – Door-length
●	●	●	●	●	●	Tilt steering wheel
●	●	●	●	●	●	Windshield wipers – Interval (controls only on Stripped Chassis, no wiper motor)
PACKAGES²						
—	—	—	○	○	○	AC Prep Package – Scroll compressor, condenser, drive belt, tensioner-attaching brackets and bolts
—	○	○	—	—	—	Ambulance Prep Package – Auxiliary Heater/AC Connector Package, 4.10:1 limited-slip axle (E-350), dual alternators, front license plate bracket, manual-telescoping trailer tow mirrors, spare tire and wheel, frame pucks, dual-note horn (requires diesel engine)
—	○	○	—	—	—	Auxiliary Heater/Air Conditioning Connector Package – Front heater connector and front air conditioning connector
—	○	○	—	—	—	Auxiliary Heater/Air Conditioning Connector Package w/Rear Controls
○	○	○	—	—	—	Class I Trailer Tow Prep Package
○	○	○	—	—	—	Exterior Upgrade Package – Front chrome bumper and grille surround, and aerodynamic headlamps
●	●	●	●	●	●	Handling Package – Front stabilizer bar, and heavy-duty front and rear shock absorbers
○	○	○	—	—	—	Insulation Package – Front cloth headliner and cloth sun visors
○	○	○	—	—	—	Interior Upgrade Package – Front cloth headliner, high-series door-trim panels, dual cloth front captain's chairs, cloth sun visors, carpet, power windows/door locks, and Insulation Package
—	○	○	—	—	—	Motorhome Prep Package – Front chrome bumper and grille, aerodynamic headlamps, power windows/door locks, manual pedestals (seats not included), Class I Trailer Tow Prep Package, cruise control, frame pucks, front license plate bracket, and 55-gallon fuel tank (37-gallon with E-350 Super Duty with 138" or 176" WB)
—	●	●	—	—	—	School Bus Prep Package – Front license plate bracket, banded front door glass (tinted), high-back driver seat only, and frame pucks; deletes RH seat, RH seat pedestal and attaching hardware, RH safety belt system, RH B-pillar trim and scuff plate, passenger-side front airbag, sideview mirrors and front headliner
—	○	○	—	—	—	Shuttle Bus Prep Package – Front chrome bumper and grille, aerodynamic headlamps, manual pedestals (seats not included), frame pucks, power windows/door locks, front license plate bracket, engine block heater, driver and front-passenger airbags; deletes front headliner and front dome lamp

● Standard ● Select Availability ○ Optional — Not Available

¹Standard on diesel, optional on gas engines. ²Restrictions apply, see dealer for details.

³Always wear your safety belt. ⁴Requires Power Windows and Locks Group.

Specifications

'08 IMPROVEMENTS ▶

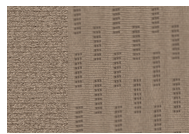
VANS ▶

CUTAWAYS ▶

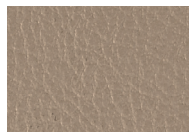
WAGONS ▶

SPECS ▶

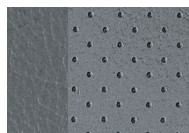
INTERIORS/EXTERIORS



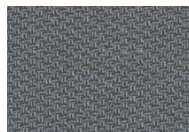
Premium Medium Pebble Cloth



Medium Pebble Leather



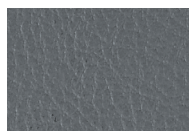
Medium Flint Vinyl



Medium Flint Cloth



Premium Medium Flint Cloth



Medium Flint Leather

MEDIUM PEBBLE

MEDIUM FLINT

XL/XLT WAGON¹

- ● Oxford White
- ● Pueblo Gold Metallic
- ● Yellow (XL only) (Fleet only)
- ● Dark Toreador Red Metallic
- ● Forest Green Metallic
- ● Dark Blue Pearl Metallic
- ● Silver Metallic
- ● Dark Shadow Grey Metallic
- ● Black
- ● Vermillion Red

XLT PREMIUM

- ● Oxford White/Silver Metallic Two-Tone
- ● Oxford White/Dark Shadow Grey Metallic Two-Tone
- ● Pueblo Gold Metallic/Dark Shadow Grey Metallic Two-Tone
- ● Dark Toreador Red Metallic/Silver Metallic Two-Tone
- ● Dark Toreador Red Metallic/Dark Shadow Grey Metallic Two-Tone
- ● Forest Green Metallic/Dark Shadow Grey Metallic Two-Tone
- ● Dark Blue Pearl Metallic/Silver Metallic Two-Tone
- ● Black/Silver Metallic Two-Tone
- ● Black/Dark Shadow Grey Metallic Two-Tone

VAN²

- ● Oxford White
- ● Pueblo Gold Metallic
- ● Yellow (Fleet only)
- ● Dark Toreador Red Metallic
- ● Forest Green Metallic
- ● Dark Blue Pearl Metallic
- ● Silver Metallic
- ● Dark Shadow Grey Metallic
- ● Black
- ● Vermillion Red

CUTAWAY

- ● Oxford White
- ● Yellow (Fleet only)
- ● Dark Toreador Red Metallic
- ● Dark Blue Pearl Metallic
- ● Silver Metallic
- ● Black
- ● Vermillion Red

¹Medium Pebble available on XLT only.

²Medium Pebble requires Interior Upgrade Package.



Oxford White



Pueblo Gold Metallic



Yellow



Dark Toreador Red Metallic



Forest Green Metallic



Dark Blue Pearl Metallic



Silver Metallic



Dark Shadow Grey Metallic



Black



Vermillion Red

Ford uses clearcoat paint for beauty and protection. Colors shown are representative only. Not all colors are available on all models. See your dealer for actual paint/trim options. Vehicles shown may contain optional equipment.



New Vehicle Limited Warranty

We want your Ford E-Series ownership experience to be the best it can be. So under this warranty, your new vehicle comes with 3-year/36,000-mile Bumper-to-Bumper Coverage, 5-year/60,000-mile Powertrain Warranty Coverage, 5-year/50,000-mile Safety Restraint Coverage, and 5-year/unlimited-mile Corrosion (Perforation) Coverage – all with no deductible. Please ask your Ford Dealer for a copy of this limited warranty.

For more assurance: The 5-year/60,000-mile powertrain limited warranty is fully transferable, has no deductible, and provides you with an additional 2 years or 24,000 miles of coverage – on select components, including the engine and transmission – beyond the standard 3-year/36,000-mile Bumper-to-Bumper Coverage. Roadside Assistance is extended to 5 years or 60,000 miles, so you have the security of knowing that help may be only a phone call away should you run out of fuel, lock yourself out of the vehicle, or need towing. Your Ford Dealer can provide complete details on all of these advantages.



Get the ride you want. Whether you plan to lease or finance, you'll find the choices that are right for you at Ford Credit. Ask your Ford Dealer for details or check us out at fordcredit.com.



Get Ford Motor Company quality in your auto insurance. Our program offers industry-leading benefits and competitive rates. Call 1-877-367-3847, or visit us at fordvip.com for a no-obligation quote. Insurance offered by American Road Services Company (in CA, American Road Insurance Agency), a licensed agency and subsidiary of Ford Motor Company.



For a purchase or lease, the Ford **Extended Service Plan** (ESP) gives you "Peace-of-Mind" protection designed to cover key vehicle components and protect you from the cost of unexpected repairs. Ask your dealer for an ESP, the only service contract backed exclusively by Ford and honored at all Ford Lincoln Mercury dealerships.



Genuine Ford Accessories are designed and engineered specifically for Ford vehicles. Visit our website at fordaccessoriesstore.com to use the Accessorizer, and to learn about complete accessory details and purchase instructions.