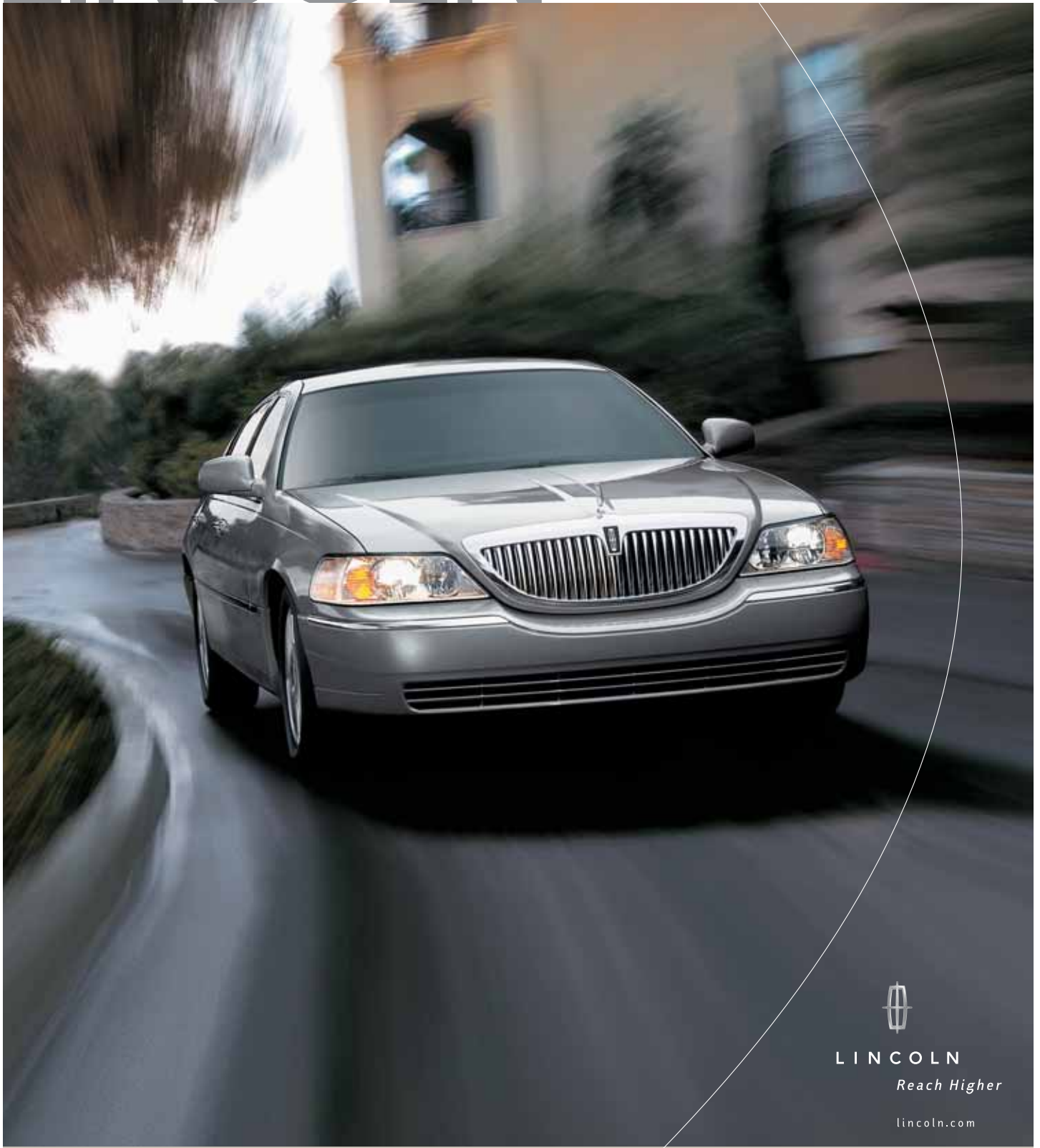


LINCOLN 2007 Town Car



LINCOLN

Reach Higher

lincoln.com



LINCOLN TOWN CAR SIGNATURE LIMITED

Flowing lines. Generous chrome. Exclusive badging. Always Lincoln.

In Cashmere Tri-Coat Metallic.

Shown with available equipment.



LINCOLN TOWN CAR SIGNATURE LIMITED

A sensory delight. Rich American walnut burl wood greets your fingertips.

Available THX® Certified audio fills the cabin with clarity.

Available touch-screen navigation shows you the way.

Consider all expectations fulfilled.



LINCOLN TOWN CAR SIGNATURE LIMITED

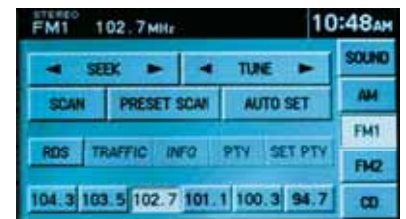
American walnut burl wood. Glove-soft premium leather trim in Light Camel.
Satin-nickel accents.
And fine, white lighting for that perfect ambience.

All that's missing is you. And up to five of your closest friends.



MAKE EASY ADJUSTMENTS TO THE THX CERTIFIED CAR AUDIO SYSTEM:

Preset all your favorite stations. THX certification is the seal of approval for dynamic sound quality. For navigation assistance, set your route preferences and enjoy high-speed calculations.



CERTIFIED SOUND

Inside its plush cabin, Lincoln Town Car puts you instantly at ease. Spacious comfort lets you stretch out in style. Rich details create a soothing harmony. It's the perfect space to enjoy your favorite score in stunning digital clarity, thanks to Town Car's available 300-watt THX® Certified Car Audio System. A 6-disc in-dash CD changer supplies continuous music, while THX certification ensures that eight speakers and a subwoofer provide crisp, clear, balanced sound to every seat with dynamic performance at high output.

To improve upon this sonic perfection, the system can also be equipped with the SIRIUS Satellite Radio service⁵ – featuring over 125 channels of coast-to-coast music, news, sports and entertainment. Since its signals are beamed from satellites, the nationwide reception allows you to listen continuously from the boardwalk at Atlantic City to the pier at Santa Monica – and everywhere in between.

CONCIERGE ON BOARD

Incorporated into the THX Certified Car Audio System, Town Car's voice-activated/touch-screen Navigation System features high-quality graphics on its large 6.5" screen. Combining DVD mapping with Global Positioning System (GPS) satellite technology, the system features presets for routes you'd like to store, and a points-of-interest function that can route you to an ATM, hotel, or even the nearest police station or hospital, if necessary. Through a microphone in the auto-dimming rearview mirror, it will understand 170 voice commands as it verbally guides you to your destination. Touch-screen simplicity and Map, Destination and Menu buttons make it intuitively easy to use.

⁵See your Lincoln Mercury Dealer or contact SIRIUS at 1-888-539-7474 for more information.



FIRST WITH 5 STARS IN ALL 5 CATEGORIES

Lincoln Town Car is the first automobile ever to receive the government's highest 5-Star crash test safety rating in all five categories (driver frontal impact, passenger frontal impact, front-seat side impact, rear-seat side impact, and rollover rating) — an achievement it has garnered five years in a row (2003–2007). In the event of certain frontal impacts, Town Car responds quickly. For starters, the Personal Safety System® controls safety belt tension and the energy deployment level of Town Car's dual-stage front airbags. In certain side-impact collisions, front-seat side airbags for the driver and right-front passenger, and side-intrusion door beams in all four doors enhance occupant safety.

RIDE CONTROL

During hard braking, Town Car's standard Anti-lock Brake System helps maintain steering control by electronically "pumping" the brakes several times per second to provide greater steering control precisely when you need it most. To maintain your composure on loose or slippery surfaces, All-Speed Traction Control improves traction by using a combination of brake and engine control to reduce wheel spin.



LINCOLN TOWN CAR DESIGNER

Extra hints of exterior chrome.
Eucalyptus wood and supple Provence leather trim inside. Uniquely Town Car.
Exclusively yours.
In Cashmere Tri-Coat Metallic.

SIGNATURE

PERFORMANCE

- 4.6L SOHC 16-valve V-8 engine
- Fail-safe engine cooling system
- 4-speed electronic automatic overdrive transmission
- All-Speed Traction Control
- Speed-sensitive, variable-assist power rack-and-pinion steering
- Power 4-wheel disc Anti-lock Brake System
- Dual, stainless steel exhaust system
- P225/60R17 all-season black sidewall tires

EXTERIOR

- Lincoln waterfall grille with chrome surround
- Power pull-down trunk lid with low liftover height
- Color-keyed power, heated sideview mirrors with auto-dimming driver's side
- Intermittent, variable-speed windshield wipers
- Rear-window defroster
- Extended Rear Park Assist
- 17" 12-spoke machined-aluminum wheels

INTERIOR

- American walnut burl wood trim
- Dual-zone Electronic Automatic Temperature Control with secondary steering wheel-mounted controls
- Rear-seat climate control ducts
- Premium AM/FM stereo/single-CD player
- Premium leather-trimmed 8-way power front seats with 40/20/40 split and power lumbar
- Front seatback and door-trim map pockets
- Front-row center, bi-directional armrest with useable storage in lid; rear-seat center fold-down armrest with 2 cupholders
- Overhead console
- Lockable, illuminated glove compartment
- Front (2) and rear (2) cupholders
- Remote fuel filler door release on door-trim panel
- Remote trunk-lid release on door-trim panel
- Front and rear scuff plates with Lincoln-embossed aluminum inserts
- Auto-dimming rearview mirror
- Illuminated visor vanity mirrors

INSTRUMENTATION ■ DRIVER'S CONTROLS

- Accessory timed delays
- Analog instrument cluster with secondary digital speedometer
- Electronic digital compass in message center
- Tilt, leather-wrapped steering wheel with secondary audio and climate controls and electronic cruise control
- Power windows with one-touch-up/-down driver's-side feature
- Power door locks with SmartLock
- Power-adjustable pedals
- Automatic parking brake release
- Universal Garage Door Opener

SECURITY ■ SAFETY

- Personal Safety System® for driver and right-front passenger with dual-stage airbags,* safety belt pretensioners, safety belt energy-management retractors, safety belt usage sensors, driver's-seat position sensor, crash severity sensor, restraint control module and Front-Passenger Sensing System
- Front-seat side airbags* with head/chest protection for driver and right-front passenger
- Lap and shoulder belts for front-outboard seating positions (height-adjustable) and all rear seating positions; lap belt for front-center position
- Rear-seat LATCH (lower anchors and tether anchors for child-safety seats)
- Side-intrusion door beams
- Child-safety rear door locks
- Remote keyless-entry system with illuminated entry, theater dimming and security approach lamps (when Autolamp system is engaged)
- Driver's door-mounted keyless-entry keypad
- Door courtesy lights with integral reflectors
- Autolamp automatic on/off headlamps with delay
- Perimeter alarm system
- SecurILock® passive anti-theft system
- SmartLock anti-lockout system
- Brake/shift interlock

SIGNATURE LIMITED

In addition to or in place of equipment on Signature:

- Full-Power Trunk Lid with remote open/close and low liftover height
- Color-keyed power, heated sideview mirrors with memory settings and auto-dimming driver's side
- 17" 10-spoke machined-aluminum wheels
- Audiophile® Dual-Media AM/FM stereo/single-CD/cassette player with Digital Sound Processing, 150 watts, 8 Audiophile speakers and a subwoofer; SIRIUS Satellite Radio-capable
- Premium leather-trimmed 8-way power, heated front seats with 40/20/40 split and power lumbar; easy entry/exit power driver's seat with memory settings
- Embroidered floor mats
- Tilt, wood- and leather-trimmed steering wheel with secondary audio and climate controls and electronic cruise control
- Power-adjustable pedals with memory settings

DESIGNER

In addition to or in place of equipment on Signature Limited:

- Chrome B-pillar trim and chrome door handles
- "Designer" badging
- 17" 9-spoke chrome-aluminum wheels
- Fog lamps
- Two-tone door-trim panels**
- Provence leather-trimmed seats with shirred inserts and contrasting piping
- Adjustable rear-seat head restraints
- Brushed-aluminum scuff plates
- Eucalyptus wood trim

Complimentary maintenance makes driving your Lincoln even more of a pleasure. Simply bring it to an authorized Lincoln service center, and scheduled maintenance will be performed at no charge throughout your first year of ownership or 12,000 miles, whichever comes first. Additional peace of mind comes from a 4-year/50,000-mile bumper-to-bumper New Vehicle Limited Warranty that covers repair, replacement or adjustment of parts at no additional cost, as well as a 6-year/70,000-mile powertrain limited warranty which features no deductible and is fully transferable. And Roadside Assistance for 6 years or 70,000 miles provides the security of knowing that help may be only a phone call away should you run out of fuel, lock yourself out of the vehicle or need towing. Your Lincoln Mercury Dealer will provide complete details on all of these privileges.



FORD CREDIT Get the ride you want. Whether you plan to lease or finance, you'll find the choices that are right for you at Ford Credit. Ask your Lincoln Mercury Dealer for details or check us out at www.fordcredit.com.

FORD MOTOR COMPANY INSURANCE SERVICES Get Ford Motor Company quality in your auto insurance. Our program offers industry-leading benefits and competitive rates. Call 1.877.367.3847, or visit us at www.fordvip.com for a no-obligation quote. Insurance offered by American Road Services Company (in CA, American Road Insurance Agency), a licensed agency and subsidiary of Ford Motor Company.

FORD EXTENDED SERVICE PLAN For a purchase or lease, the Ford Extended Service Plan (ESP) gives you "Peace-of-Mind" protection designed to cover key vehicle components and protect you from the cost of unexpected repairs. Ask your dealer for an ESP, the only service contract backed exclusively by Ford and honored at all Ford Lincoln Mercury dealerships.

SIGNATURE L

In addition to or in place of equipment on Signature Limited:

- 6" extended wheelbase
- Heavy-duty front stabilizer bar
- REAR-SEAT AMENITIES PACKAGE with heated rear seats; illuminated cigar lighter on each rear door; one-piece floor mat with Lincoln star logo; rear-seat 4-way head restraints; rear-seat center fold-down armrest with storage bin, tissue bin and 2 cupholders; rear-seat illuminated visors; dual power points; secondary audio/climate controls; and secondary front-passenger seat forward-and-back control

AVAILABLE EQUIPMENT

- High-Intensity Discharge (HID) headlamps (not available on Signature)
- Two-tone paint treatment (available on Signature and Signature Limited)
- Power moonroof (not available on Signature or Signature L)
- 6-disc in-dash CD changer (not available on Signature)
- THX® Certified Car Audio System, including voice-activated touch-screen DVD/Satellite Navigation System† and 6-disc in-dash CD changer; SIRIUS Satellite Radio-capable‡
- Trunk organizer (not available on Signature)
- 17" 18-spoke chrome-aluminum wheels (available on Signature Limited and Signature L)
- P225/60R17 all-season white sidewall tires
- Premium Dual-Media Sound System (available on Signature)

WHEELS

- A** 17" 12-spoke machined-aluminum
Standard on Signature
- B** 17" 10-spoke machined-aluminum
Standard on Signature Limited and Signature L
- C** 17" 18-spoke chrome-aluminum
Available on Signature Limited and Signature L
- D** 17" 9-spoke chrome-aluminum
Standard on Designer



DIMENSIONS

Head Room	Signature, Signature Limited, Designer, Signature L 39.4" Front 37.4" Rear
Leg Room	Signature, Signature Limited, Designer 41.7" Front 39.6" Rear Signature L 41.7" Front 45.4" Rear
Hip Room	Signature, Signature Limited, Designer 57.0" Front 58.0" Rear Signature L 57.0" Front 58.3" Rear
Shoulder Room	Signature, Signature Limited, Designer, Signature L 60.3" Front 59.9" Rear
Height	Signature, Signature Limited, Designer 59.0" Signature L 59.1"
Length	Signature, Signature Limited, Designer 215.4" Signature L 221.4"
Width	78.5" (excluding mirrors)
Wheelbase	Signature, Signature Limited, Designer 117.7" Signature L 123.7"
Curb Weight	4345-4518 lbs.
Track	63.4" Front 65.9" Rear
Luggage Capacity	21.0 cu. ft.

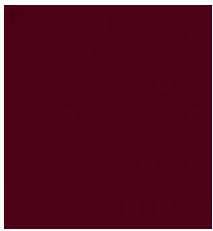
2007 EPA-Estimated
Fuel Economy 17 mpg city/25 hwy.

*Always wear your safety belt and secure children in the rear seat. **Only available with Light Camel interior. †Navigation System not available in Alaska. Requires THX Certified Car Audio System. ‡SIRIUS not available in Alaska or Hawaii. See your Lincoln Mercury Dealer or contact SIRIUS at 1-888-539-7474 for more information. Dealer-installed option; requires Navigation System.

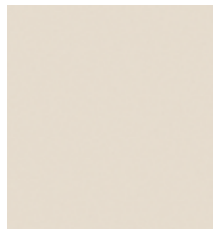
Audiophile is a registered trademark of Audiophile, Inc. THX and the THX logo are trademarks of THX Ltd., which may be registered in some jurisdictions. All rights reserved. "SIRIUS" and related marks are registered trademarks of SIRIUS Satellite Radio Inc.

Comparisons based on 2007 competitive models (Traditional Full-size Luxury Car class), publicly available information and Ford certification data at time of printing. Some features discussed may be optional. Vehicles shown may contain optional equipment. Features shown may be offered only in combination with other options or subject to additional ordering requirements or limitations. Dimensions shown may vary due to optional features and/or production variability. Following publication of the catalog, certain changes in standard equipment, options and the like, or product delays may have occurred which would not be included in these pages. Your Lincoln Mercury Dealer is the best source of up-to-date information. Lincoln Mercury reserves the right to change product specifications at any time without incurring obligations.

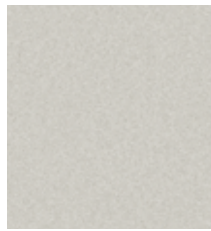
LINCOLN EXTERIOR PAINTS AND INTERIOR LEATHERS



DARK CHERRY



WHITE CHOCOLATE TRI-COAT



CASHMERE TRI-COAT



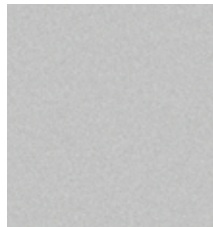
LIGHT FRENCH SILK



1 BLACK LEATHER



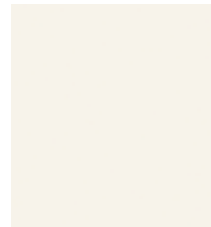
DARK BLUE PEARL



SILVER BIRCH



LIGHT ICE BLUE



VIBRANT WHITE



2 MEDIUM LIGHT STONE LEATHER



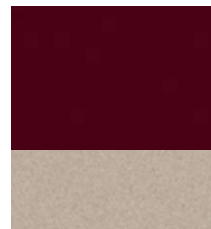
BLACK



SATELLITE SILVER



CHARCOAL BEIGE



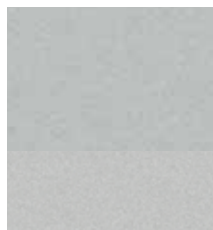
DARK CHERRY/
LIGHT FRENCH SILK



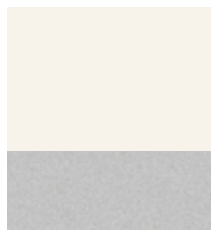
3 DOVE LEATHER



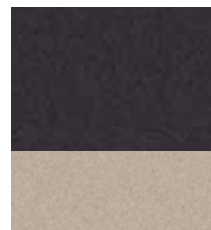
WHITE CHOCOLATE TRI-COAT/
LIGHT FRENCH SILK



SATELLITE SILVER/
SILVER BIRCH



VIBRANT WHITE/
SILVER BIRCH



CHARCOAL BEIGE/
LIGHT FRENCH SILK



4 LIGHT CAMEL LEATHER

SIGNATURE AND SIGNATURE LIMITED

- 2, 3, 4 DARK CHERRY
- 2, 3, 4 WHITE CHOCOLATE TRI-COAT
- 2, 3, 4 CASHMERE TRI-COAT
- 2, 4 LIGHT FRENCH SILK
- 1, 2, 3, 4 DARK BLUE PEARL
- 1, 2 SILVER BIRCH
- 2, 3, 4 LIGHT ICE BLUE
- 1, 2, 3, 4 VIBRANT WHITE
- 1, 2, 3, 4 BLACK
- 2, 3 SATELLITE SILVER
- 1, 2, 4 CHARCOAL BEIGE
- 2, 3, 4 DARK CHERRY/LIGHT FRENCH SILK
- 2, 3, 4 WHITE CHOCOLATE TRI-COAT/LIGHT FRENCH SILK
- 2, 3 SATELLITE SILVER/SILVER BIRCH
- 1, 2, 3, 4 VIBRANT WHITE/SILVER BIRCH
- 1, 2, 4 CHARCOAL BEIGE/LIGHT FRENCH SILK

DESIGNER

- 1, 4 DARK CHERRY
- 4 WHITE CHOCOLATE TRI-COAT
- 1, 4 CASHMERE TRI-COAT
- 1, 4 BLACK

SIGNATURE L

- 1, 2, 3, 4 DARK CHERRY
- 2, 3, 4 CASHMERE TRI-COAT
- 2, 4 LIGHT FRENCH SILK
- 1, 2 SILVER BIRCH
- 1, 2, 3, 4 BLACK
- 2, 3 SATELLITE SILVER
- 1, 2, 4 CHARCOAL BEIGE

Lincoln Mercury reserves the right to change product specifications at any time without incurring obligations. Please see your Lincoln Mercury Dealer for actual paint/trim options. Lincoln uses clearcoat paint for beauty and protection. All exterior paints are Metallic except for Vibrant White and Black. Colors are representative only.

07LTCPDF ©2006 Lincoln Mercury, Ford Motor Company