

ALL-NEW 06 LINCOLN ZEPHYR

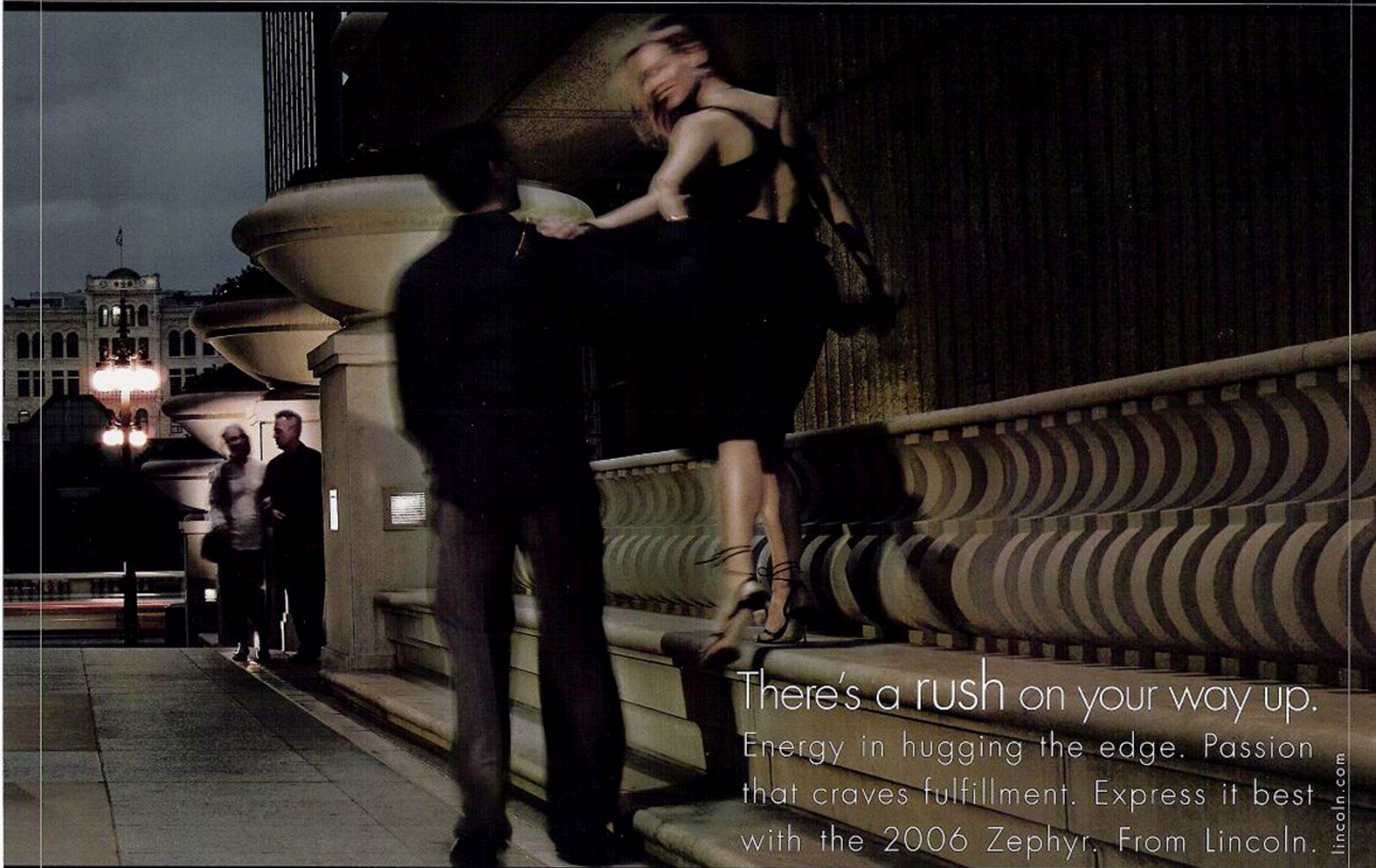


LINCOLN



The all-new 2006 Lincoln Zephyr demands more than your attention. It steals your heart.

Shown in Silver Frost Metallic with available equipment.



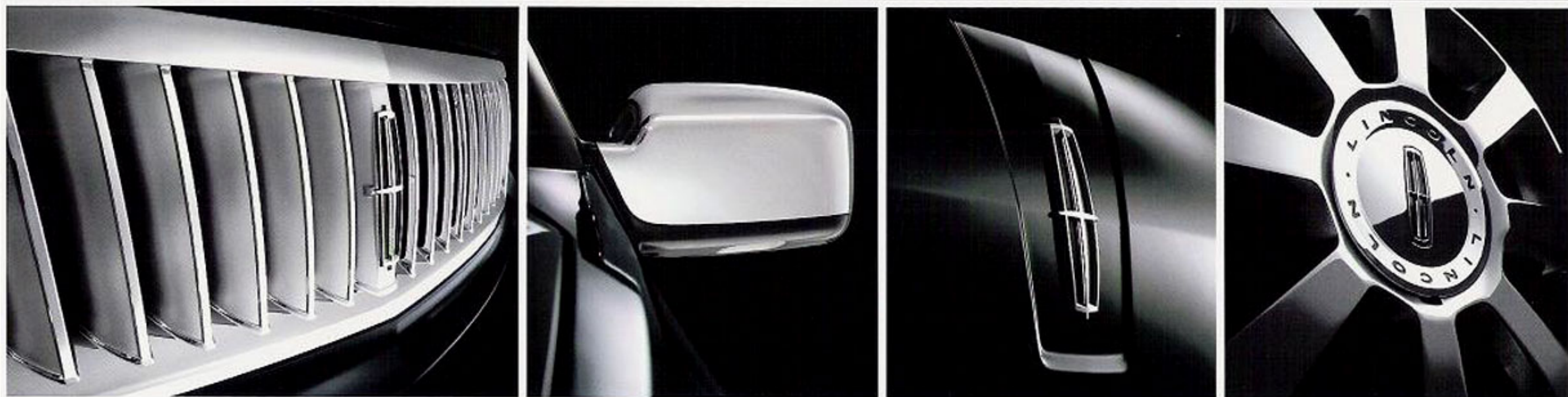
There's a rush on your way up.
Energy in hugging the edge. Passion
that craves fulfillment. Express it best
with the 2006 Zephyr. From Lincoln.



Is it him? Or is it his all-new Lincoln Zephyr? She'll never tell. Neither will we.

Shown in Black with available equipment.

Athletic. Grounded. Clean-cut. If Zephyr were a man, she'd rush him out to meet her friends. After all, there's much to be said about a guy who knows how to dress well. And Zephyr's sleek looks are certainly impressive. The steeply angled windshield and bold horizontal lines of the grille and taillamps suggest an athletic disposition, while large-diameter, spoked aluminum wheels let everyone know there's a playful side to its elegance. And tightly tucked front and rear bumpers reveal a very disciplined nature. Introducing the expressive, all-new 2006 Lincoln Zephyr.



TO HEIGHTEN LINCOLN ZEPHYR'S ALLURING SENSE OF STYLE, A BRILLIANT CHROME FINISH IS USED EXTENSIVELY ON THE EXTERIOR, MOST NOTABLY ON ZEPHYR'S PROMINENT WATERFALL GRILLE. YOU'LL ALSO FIND TASTEFUL EXPRESSIONS AT THE BASE OF THE WINDOWS, ON THE SIDEVIEW MIRROR CAPS, AND WITH THE ELEGANT LINCOLN STAR GRACING THE REAR DECKLID. MACHINED-ALUMINUM 17" WHEELS ARE STANDARD. CHROME-ALUMINUM 17" WHEELS (SHOWN) ARE AVAILABLE.



LINCOLN



Catch Zephyr if you can. It will keep your heart racing for miles.

Shown in Black with available equipment.

Just as enlightening coming as it is going.

As soon as they see the brilliant glow of Lincoln Zephyr's Light-Emitting Diode (LED) taillamps, people react – quickly. Since these LEDs reach illumination up to a half-second faster than filament bulbs, they give other drivers valuable extra-warning time – which can result in a difference of up to 40-60 feet of stopping distance at highway speeds. Up front, jeweled projector-beam headlamps use a computer-calculated, free form reflector system to accurately project light from their halogen bulbs. Available High-Intensity Discharge (HID) headlamps with Xenon bulbs (shown) provide even more illumination, doubling the light output while requiring one-third less power than their halogen counterparts. And with the Autolamp feature engaged, Zephyr's headlamps turn on and off automatically, and remain on for a few moments to light your path at night.



LINCOLN ZEPHYR'S FRONT HEADLAMP CLUSTERS WRAP FROM THE GRILLE INTO THE FENDERS, WHERE THE SIDE MARKER LAMPS AND TURN-SIGNAL REPEATERS ARE HOUSED. TWIN, ROUND ELEMENTS PROJECT A SPORTY ATTITUDE, WHILE STANDARD FOG LAMPS HELP IMPROVE VISIBILITY IN INCLEMENT WEATHER. VISUALLY ARRESTING TAILLAMPS CONTINUE THE STRONG HORIZONTAL THEME AND INCORPORATE LED'S FOR IMMEDIATELY DISTINCTIVE ILLUMINATION.



In light Figured Maple (shown) or dark Ebony, the polished-wood grips of Lincoln Zephyr's steering wheel attract your hands like magnets.

Shown with available equipment.

Harmony and compatibility: keys to any rewarding relationship.

In Lincoln Zephyr, the interplay between premium leather, real wood, satin-nickel and chrome finishes creates an immediate rush. As you sink into the tailored leather-trimmed driver's seat, with its 10-way power adjustments, the visual tapestry is most impressive. Highly polished genuine wood runs horizontally across each side of the instrument panel and wraps around the handgrip area of the leather-wrapped steering wheel. On models equipped with the available THX™ II Certified Audio System, a corrugated-aluminum waterfall cascades from the top of the instrument panel into the center stack, where all essential controls are housed. Metal ribbing lends a feeling of strength to Zephyr's commanding driving environment. From here, the road to success is wide open before you.



CHROME OR SATIN-NICKEL ACCENTS GRACE ALL INTERIOR BUTTONS, KNOBS AND CONTROLS. LIGHT FIGURED MAPLE OR DARK EBONY WOODS ENRICH THE INSTRUMENT PANEL, DOOR TRIM AND LEATHER-WRAPPED STEERING WHEEL. PREMIUM LEATHER TRIM COVERS THE SEATING SURFACES AND SHIFT KNOB. WHATEVER YOU TOUCH, YOUR SENSES ARE ENERGIZED INSIDE THE ALL-NEW LINCOLN ZEPHYR.

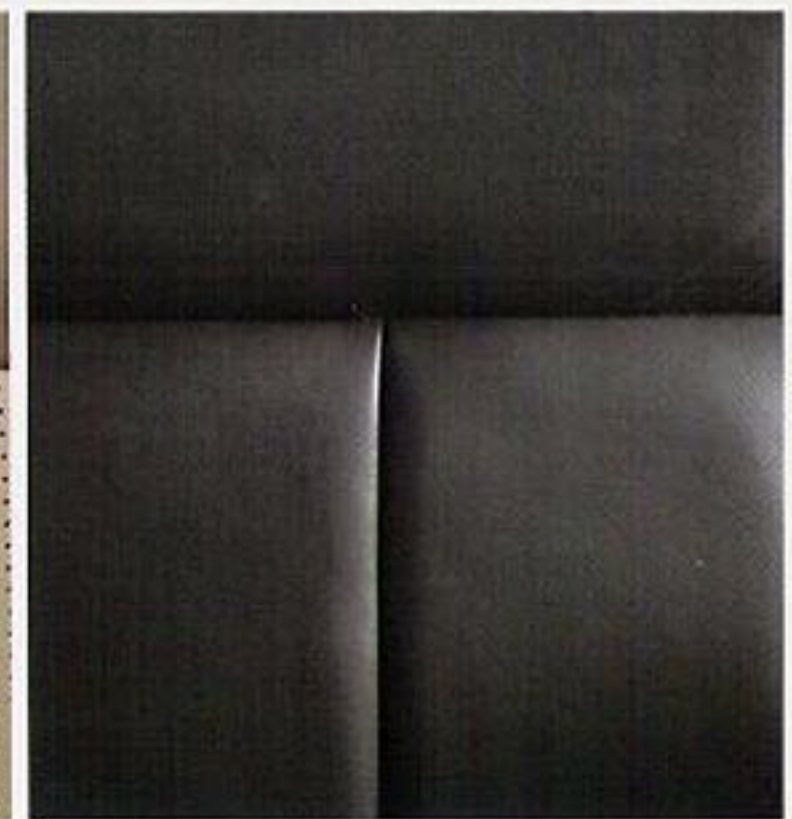
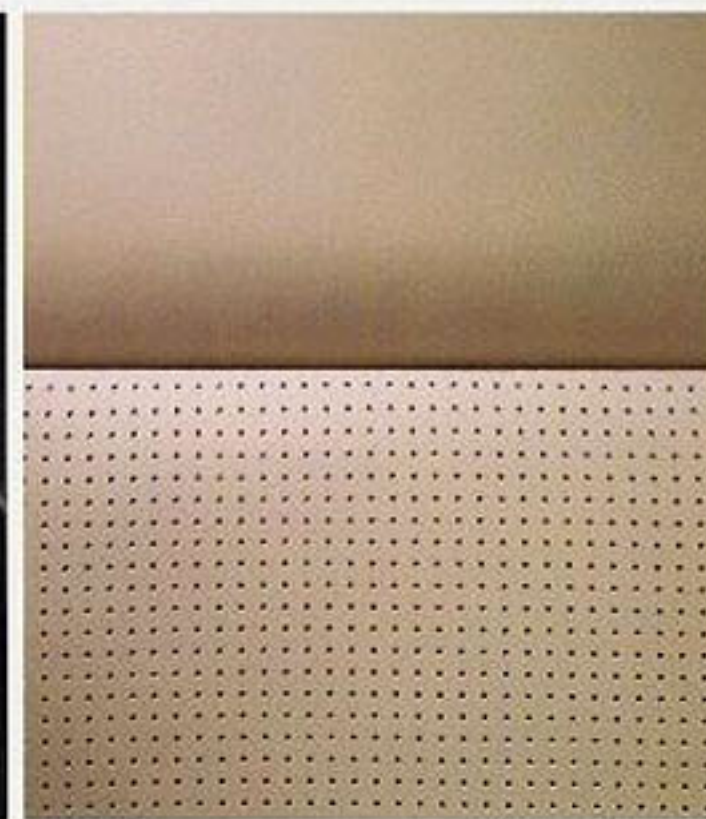


With 10-way power, heated driver and front-passenger seats, you might never want to leave Zephyr's sumptuous leather-trimmed interior.

Shown with available equipment.

If it gets too hot, Zephyr can even help cool it down.

Zephyr's artful interior, inspired by modern classics such as the Eames® lounge chair, evokes strong feelings of passion. So when the temperature rises, know that an available cooling feature within Zephyr's leather-trimmed front seats can be activated to get things under control. The 3 cool settings join 3 standard heat settings to keep you comfortable all day – and all night. White, Light-Emitting Diodes (LEDs) – used for interior lighting and to illuminate controls throughout the cabin – are just as cool. In the rear, a generous fold-down armrest with cupholders, and door-trim panels accented with wood and satin-nickel, remind passengers that they're as favored as those up front.



ZEPHYR'S TAILORED FRONT SEATS CAN BE EQUIPPED WITH AN AVAILABLE CLIMATE CONTROL SYSTEM THAT ALLOWS COOLED AIR TO BE QUIETLY CIRCULATED THROUGH PERFORATIONS IN THE LEATHER TRIM. DARK EBONY WOOD IS MATCHED WITH DARK CHARCOAL OR LIGHT STONE SEATING. FOR A DISTINCTLY MODERN FLAIR, LIGHT FIGURED MAPLE IS PAIRED WITH SAND LEATHER TRIM.



LINCOLN

14 SPEAKERS

OUTPERFORM YOUR EXPECTATIONS

12 PRIMARY SPEAKERS deliver a surround-sound experience

2 SUBWOOFERS provide rich, deep bass

12 AMPLIFIER CHANNELS supply 600 watts of power

THX CONFIGURABLE SPEAKER ARRAY™ adds acoustic depth

THX CONFIGURABLE
SPEAKER ARRAY



FRONT CENTER-CHANNEL
SPEAKERS (3)

PRIMARY SPEAKERS (2)

PRIMARY SPEAKERS (2)

PRIMARY SPEAKERS (2)

PRIMARY SPEAKERS (2)

SUBWOOFER (1)

SUBWOOFER (1)

REAR CENTER-CHANNEL SPEAKER (1)

Whether the mood calls for jazz, alternative or rhythm and blues, the 14 speakers (including 2 subwoofers) of Zephyr's available THX™ II Certified Audio System deliver rich, acoustically balanced sound.

TOUCH-SCREEN CONTROLS ALLOW FOR EASY ADJUSTMENTS TO THE AVAILABLE THX™ II CERTIFIED AUDIO SYSTEM AND NAVIGATION SYSTEM. ADJUST BALANCE AND FADE (LEFT); TURN SPEED-COMPENSATED VOLUME ON OR OFF (LEFT CENTER); CHOOSE SHORTEST DISTANCE TO YOUR DESTINATION (RIGHT CENTER); OR PICK YOUR PREFERRED LANGUAGE (RIGHT).



Certified Sanctuary Of Sound

Lincoln Zephyr's quiet interior is the perfect sanctuary for the industry's first THX II Certified Audio System. One of 6 select options, the system features a surround-sound experience worthy of an upscale home theater.

14 speakers deliver crisp, balanced audio. A sophisticated processor provides smooth spectral balance, wide dynamic range and superior acoustic performance. The surround-sound experience is created by 12 primary speakers, including tweeters that are cleverly mounted in the driver and front-passenger doors. Acoustic depth is provided by the THX Configurable Speaker Array™ (CSA), which is centered on top of the instrument panel. THX CSA uses several small, powerful speakers and

THX digital signal-processing technology to distribute rich sound throughout Zephyr's interior. Deep bass emanates from 2 subwoofers, while 600 watts of power come from 12 amplifier channels. An AM/FM tuner displays participating radio station call letters, formats and song titles. And a 6-disc in-dash CD changer can read CDs in normal audio or MP3 formats.

Long before it meets with your blessing – and it will – Zephyr's THX II Certified Audio System passed rigorous testing standards set by THX engineers. With this certification, Zephyr's THX II Certified Audio System is one of the most advanced on the road, putting you in the middle of your favorite musician's performance, mile after exhilarating mile.

For Night Life, Press Here

Looking for a romantic table for 2? Need to dance the night away? Then Zephyr's available all-new Navigation System – with the vast majority of North America and 2 million points of interest covered on a single DVD – will be your most-trusted concierge. The most advanced Lincoln Navigation System ever, it features a brilliant 6.5" screen, 6 presets for routes you'd like to store, and an Emergency button that, when pressed, will route you to the nearest police station or hospital. Even the button and control interface received special attention, having been designed by human interface experts to decrease driver distraction.

Trip routing – no matter how complex – is computed very quickly. For example, the system can plot a cross-country route

in the time it takes just to reach for a map. With 11 different ways to program destinations, using criteria such as shortest route or drive time, you can customize the display and prompt options for optimum convenience. And since the system stores the last 25 routes, finding your way has never been easier.

As an added bonus, the Lincoln Navigation System even speaks your language. Whether you hail from Madrid, Paris or New York City, voice-guidance technology can read the turn-by-turn travel directions aloud in Spanish (sí), French (oui) or English (yes).

You'll savor the hours spent getting to know your new love.

Just like we did. After all, we're devoted to what we're passionate about. For proof, take a look at the mile-per-hour markers on Zephyr's speedometer (below). They weren't laid out by computer. Instead, they were artistically arranged and painstakingly crafted by Lincoln designers. After studying and scrutinizing fine Swiss watches, they designed "... an interior that easily ranks among Lincoln's finest," says *TheCarConnection.com*. Now you're invited to see for yourself. Time permitting, of course.



More Than A Pretty Face

Numbers are always important. And sometimes they're downright beautiful, like those on the gauges of the 2006 Lincoln Zephyr. With a chromed housing and translucent pointers, Zephyr's speedometer and tachometer are given equal prominence in a symmetric array. The effect is enhanced at night by crisp, white LED lighting.

The Perfect Position

With Zephyr's standard 10-way power driver and front-passenger seats, you can always find your sweet spot. Standard premium leather trim is soft yet supportive, and 3 heat settings take the chill out of fall or winter air. For relief during the heat of summer, available perforated, leather-trimmed seats are cooled as well, with a choice of 3 settings.

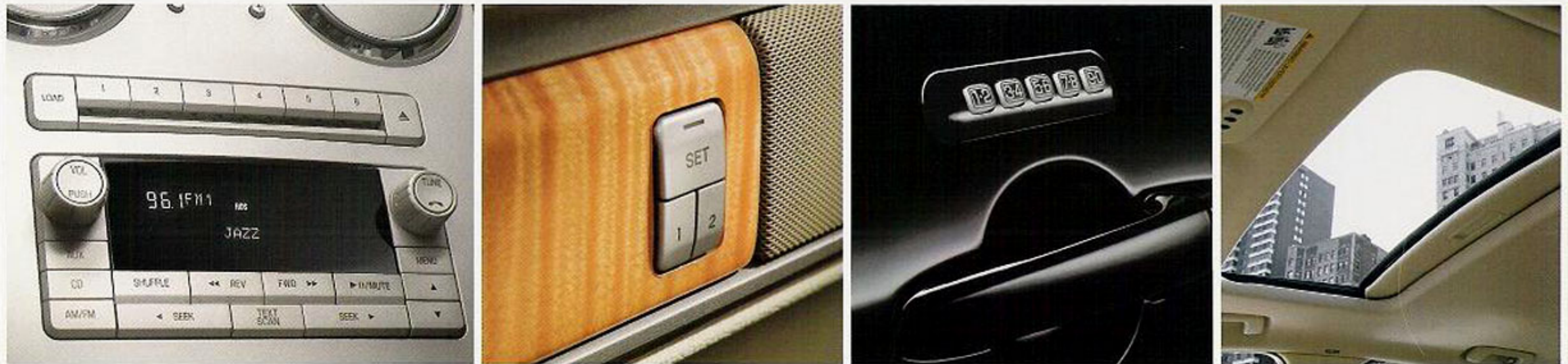
Grip Here

With prominent wood grips in either light Figured Maple (above) or dark Ebony, Zephyr's steering wheel just wants to be held. Convenient speed and secondary audio and climate controls reside in satin-nickel inserts that serve as the inner face of the spokes.

Handle Warm And Cold Spells

Both the driver and front passenger can set the cabin temperature to their liking with Zephyr's Dual-zone Electronic Automatic Temperature Control, and the system automatically maintains it for each side. Extensive use of "soft-duct" technology reduces fan noise.

OTHER ZEPHYR INTERIOR STANDARDS NOT SHOWN INCLUDE: AUTO-DIMMING REARVIEW MIRROR • TILT/TELESCOPIC STEERING COLUMN • 10-WAY POWER, HEATED DRIVER AND FRONT-PASSENGER SEATS • STYLISH ANALOG CLOCK • CENTER CONSOLE WITH TWO-TIERED STORAGE • LEATHER-WRAPPED SHIFT KNOB • SPRING-ASSISTED 60/40 SPLIT REAR BENCH SEAT • 2 POWER POINTS



Establish The Mood

Nothing enhances a moment like music, and Zephyr's standard premium AM/FM 6-disc in-dash CD changer is more than willing to supply the entertainment. Load it with your favorites, including any MP3 files you've burned to a mood-themed CD. Six strategically placed speakers help express your feelings.

His And Hers

Like personal monograms, Zephyr's leather-trimmed driver's seat and power, heated sideview mirrors have memory settings for 2 drivers. After deciding who's first and who's second, just press the unlock button on the key remote or your number on the driver's door-trim panel, and the seat and sideview mirrors adjust to your preset comfort positions.

What's Your Number?

Even when your key remote isn't handy, getting into Zephyr is easy with the driver's-door keyless-entry keypad. After punching in your preset number to unlock the driver's door, you can also unlock all other doors and open the trunk. And to make it more convenient at night, the keypad is backlit to enhance visibility.

It's In The Air

Love? Most definitely. On a warm spring evening, nothing reinforces *amoré* like a pleasant drive by the water with the music playing and the power moonroof open to the fresh air. A convenient global open feature even allows you to open both the front windows and moonroof with the integrated key fob.



LINCOLN

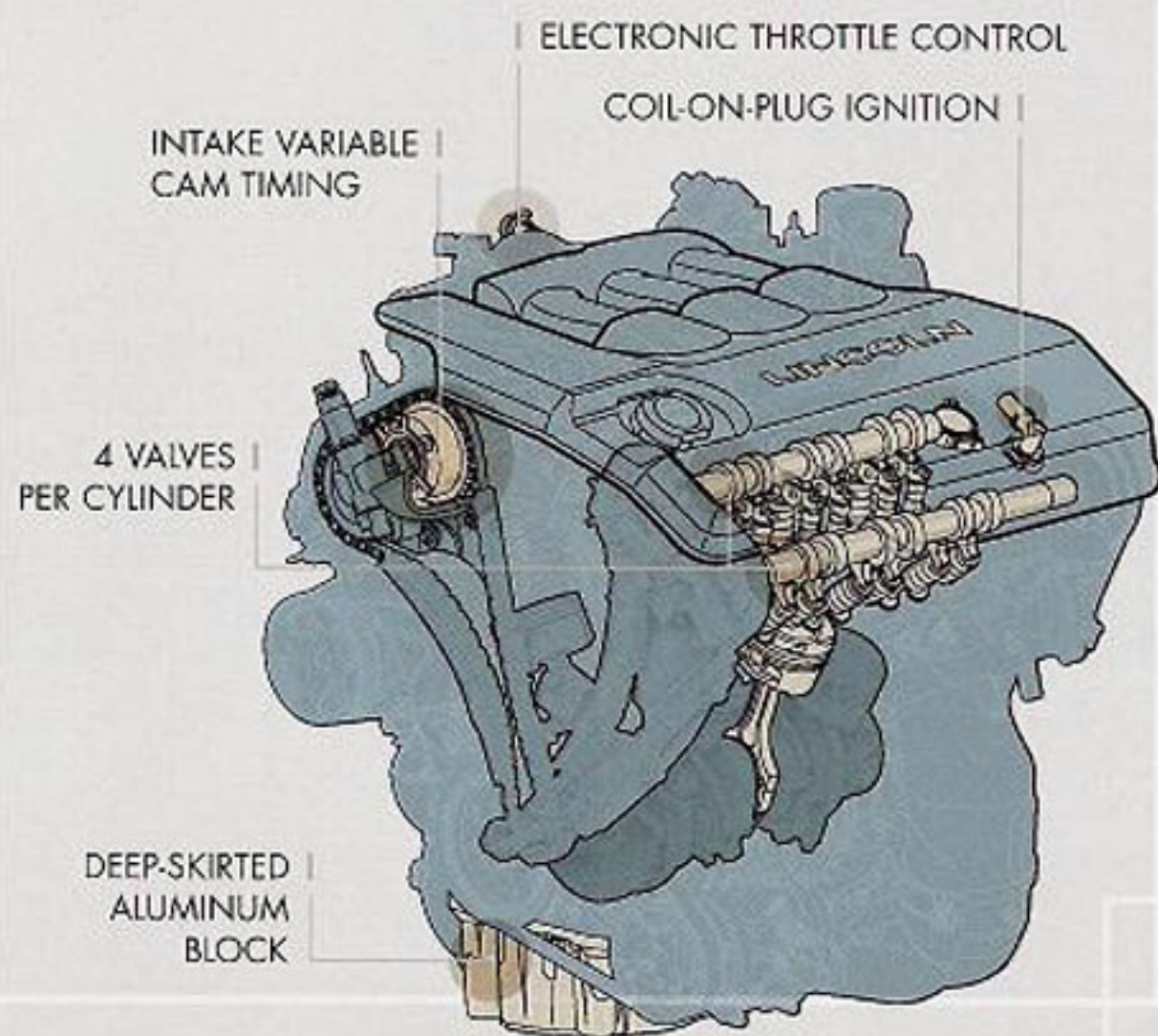
Can you influence others without saying a word?

Lincoln Zephyr can. Its looks alone command respect, and for good reason: teamed with the only standard 6-speed automatic transmission in its class, its 3.0L Duratec 30 V-6 engine pumps out 221 hp and 205 lb.-ft. of torque for spirited performance around curves and down straightaways. Tuned for liquid power throughout its rev range, Intake Variable Cam Timing (IVCT) delivers torque early and keeps it coming for impressive acceleration, while Electronic Throttle Control provides precise engine control and smooth shifts. You will be moved.



Few can command a room just by walking through it. Lincoln Zephyr demands that kind of attention on the street.

Shown in Black with available equipment.



Responsible Power

Power attracts, and Lincoln Zephyr's got it. With 221 hp and 205 lb.-ft. of torque, Zephyr's 3.0L Duratec 30 V-6 engine features Electronic Throttle Control for precise throttle management and smooth shifts, and Intake Variable Cam Timing (IVCT) that provides substantial torque at the same time it reduces emissions. On the noise-reduction front, a deep-skirted aluminum block helps reduce powertrain vibration, and hydraulically lash-adjusted roller-finger followers in the valvetrain aid in quiet operation. Rated for ULEV II tailpipe emissions in California, Zephyr's V-6 is the cleanest Duratec engine to date. A hi-tech, low-emission marvel, Zephyr's 3.0L Duratec 30 V-6 engine provides all the power and none of the guilt.

**221 HP
205 LB.-FT.
OF TORQUE**

More Is Always Better

Thanks to the advanced performance and silky smooth operation of its 6-speed automatic transmission, Zephyr responds eagerly to your demands for more power. To deliver smooth, seamless shifts and quiet performance, the Electronic Throttle Control in the V-6 engine works with the electronic controls in the transmission to adjust throttle plate movement and tailor shift timing. This wide-ratio transmission maximizes the performance feel of the V-6 while helping it deliver exceptional gas mileage. In other words, it zips and sips.

Timing Is Everything

Zephyr's IVCT continually adjusts intake valve timing to ensure the most complete and efficient combustion at a wider range in the rpm band, enhancing both low-end torque and high-rpm power. What driver doesn't crave more of that?



LINCOLN

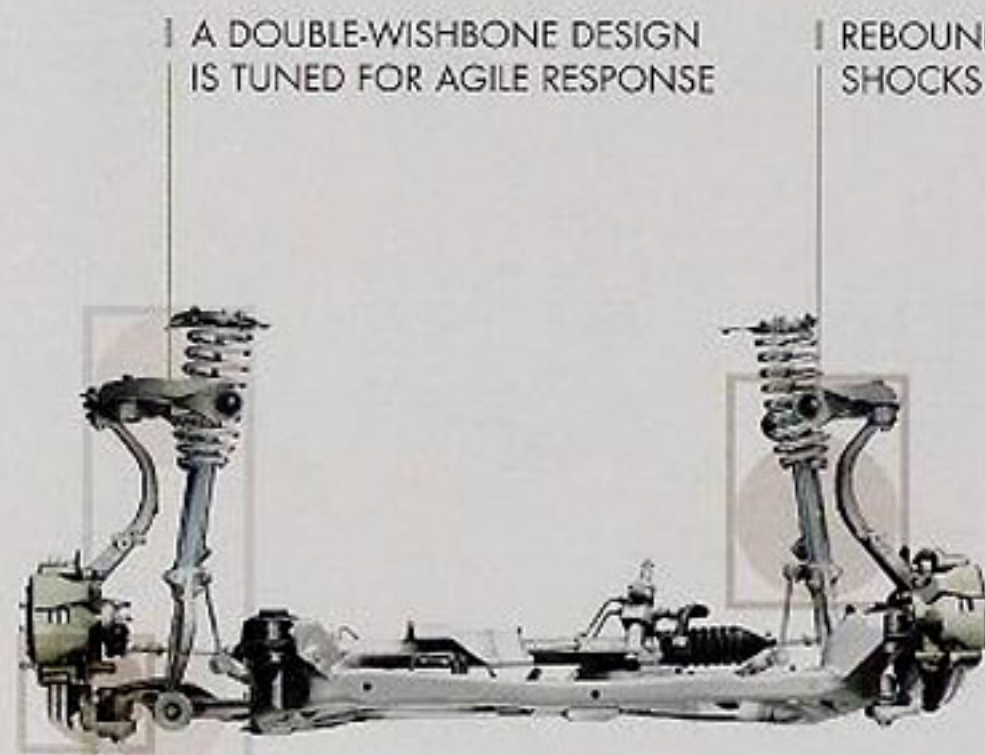
Spontaneity. Passion. This relationship has both.

Whether you're zipping through metropolitan streets on the way to your favorite club, or rounding a tight corner, the all-new Lincoln Zephyr will seduce the driving enthusiast in you. You know, the one who doesn't touch the brakes going into a sweeping curve. And the one who lives for that opening in traffic to punch the accelerator and leave the masses behind. In fact, after spending quality time with Zephyr, you'll leave feeling energized and affirmed. It's the mark of any truly great partnership.



Lincoln Zephyr cuts quite a path wherever it travels, mixing well with urban architecture without ever blending in.

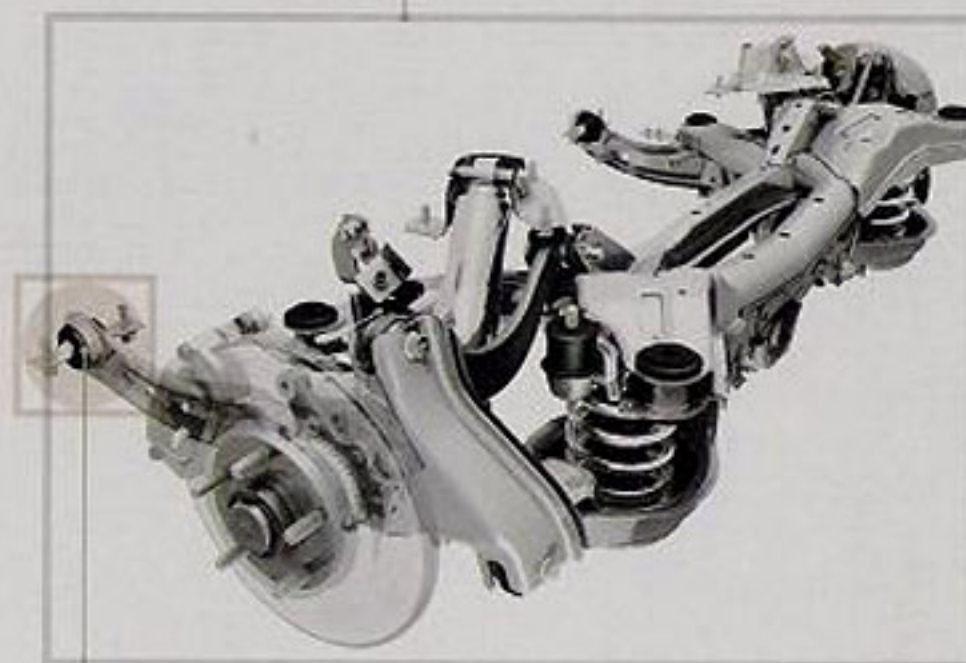
Shown in Silver Frost Metallic with available equipment.



A DOUBLE-WISHBONE DESIGN IS TUNED FOR AGILE RESPONSE

REBOUND SPRINGS IN THE FRONT SHOCKS LIMIT BODY ROLL

LOWER A-ARMS UTILIZE DOUBLE BALL JOINTS FOR GREATER SUSPENSION-GEOMETRY CONTROL



A MULTI-LINK INDEPENDENT REAR SUSPENSION LIMITS LATERAL FORCE ON THE SPRINGS FOR A MORE COMPOSED RIDE

REAR BUSHING RATES ARE TUNED FOR COMFORT AND CONFIDENT RESPONSE



VENTILATED FRONT ROTORS HELP KEEP BRAKES COOL

BRAKE CALIPERS ARE BUILT TO EXTREMELY HIGH TOLERANCES FOR STRONG STOPPING PERFORMANCE

Independent Spirit

Flexibility is good. Just ask Lincoln Zephyr's 4-wheel independent suspension. By allowing each wheel to react independently to road bumps and surface imperfections, ride quality remains steadfast and true. With a more constant camber angle, the double-wishbone suspension up front helps reduce understeer and produces better contact with the road for more consistent handling. Front and rear anti-sway bars further help reduce body roll, even while cornering at higher speeds. The result is confident, responsive handling that invigorates as it inspires.

Firm Grip

You dig in, grin and bear it when the going gets tough. It's a trait you share with Lincoln Zephyr. Standard machined-aluminum 17" wheels feature wide, 50-series V-rated performance tires specifically engineered for Zephyr to deliver superb ride quality, responsive handling and minimal cabin noise. Their tread pattern provides good wet-weather grip, yet hushed operation on dry pavement. In fact, the tires themselves reduced cabin noise by a full 6 decibels when compared with other tread patterns that were considered. It's a quiet confidence that matches well with your confident style.

Solid Reflexes

Since the front brakes do the lion's share of work in bringing any vehicle to a stop, Zephyr's 4-wheel disc brakes feature ventilated front rotors. Venting dissipates the heat caused by braking, keeping them cooler and helping to prevent brake fade. For enhanced steering control in emergency or hard-braking situations, an Anti-lock Brake System is standard. Sometimes knowing when to bring things to a halt quickly is as important as knowing when to go all out.



LINCOLN

As comfortable as companionship is, solitude has benefits.

And there's no better place to spend some "me time" than in Zephyr's hushed interior. Engineers took extensive steps to minimize unwanted noise, so that the sounds you'll hear in Zephyr are the ones you want to hear. Like your favorite tune, courtesy of the available THX™ II Certified Audio System. Or, if you do have company, the voice of that special someone.



Zephyr's streamlined shape allows for fluid airflow around the vehicle, contributing to its smooth, quiet ride.



Underbody shield. Advanced door seals. Extra layers of sound-deadening material. Thick side window glass. Aerodynamically shaped sideview mirrors. V-rated performance tires. As you can see, Lincoln engineers went to great lengths to make Zephyr a sanctuary of quiet quality. One where you can recharge your batteries by listening to the symphonic precision of the available THX™ II Certified Audio System, or by guiding 221 horses through their rev range. That's music to any driver's ears.

- A** | AIR INDUCTION SYSTEM blocks radiated noise at the air inlet under moderate to heavy acceleration
- B** | INSTRUMENT PANEL INSULATION reduces noise from the climate control system
- C** | COWL SIDE BLOCKER helps block powertrain noise, making conversation easier
- D** | POWER SIDEVIEW MIRRORS tuned to deflect air away from the glass, minimizing wind noise
- E** | THICK FRONT DOOR GLASS lessens sound transmission, helping Zephyr's interior stay quiet
- F** | UNDERBODY SHIELD reduces turbulence under the hood and improves Zephyr's aerodynamics
- G** | ABSORPTION PADS UNDER CARPET soak up high-frequency road noise so you don't have to
- H** | ONE-PIECE ENHANCED DOOR SEALS block noise at the surface level to help keep the interior hushed at speed
- I** | 17" V-RATED PERFORMANCE TIRES generate less tire-patch noise, reducing cabin noise by 6 decibels v. others tested



LINCOLN

In our most needful moments, we just want to be secure.

If an accident is unavoidable, Lincoln Zephyr is prepared for the worst under its elegant sheet metal. Specific structural areas were strengthened against intrusion by manufacturing them with additional steel. Others were designed to collapse, absorb or channel crash energy away from occupants. And inside, occupant protection systems help keep you and your passengers safe. It's peace of mind you can count on, wherever you decide to stroll.



Zephyr's understated elegance and strong stance impart a feeling of confidence with every drive.

Shown in Light Sage Metallic.

- 1 | DUAL-STAGE FRONT AIRBAGS**
Part of Zephyr's Personal Safety System®; adjust their deployment levels based on several factors for enhanced front-occupant protection

- 2 | FRONT-SEAT SIDE AIRBAGS**
Seat-deployed for enhanced chest protection in certain side-impact collisions

- 3 | 3-POINT SAFETY BELTS**
At all seating positions, with front-seat pretensioners and energy-management retractors

- 4 | SIDE-CURTAIN AIRBAGS**
Cover 1st and 2nd rows; enhance head protection for outboard occupants

- 5 | ROLL-FOLD TECHNOLOGY**
Allows the side-curtain airbag to position itself between the glass and outboard occupants



- 6 | FRONT AND REAR RAILS [Teal]**
Deform progressively, helping absorb impact

- 7 | STEEL ROCKER PANELS [Gold]**
Offer exceptional deformation ability

- 8 | SEAMLESSLY WELDED B-PILLARS [Gold]**
High-grade steel in the upper sections helps protect occupants; lower tensile-strength steel on the bottom sections helps absorb and manage the force of certain side impacts

- 9 | ABS WITH ELECTRONIC BRAKE FORCE DISTRIBUTION**
4-wheel disc brakes with ABS feature Electronic Brake Force Distribution (EBD). By measuring brake force and directing braking to the wheels that have the best grip, EBD helps achieve shorter stopping distances

- 10 | INTEGRATED KEY FOB**
Short and sweet, with all features (door lock and unlock, trunk release and panic button) on the key





STANDARD EQUIPMENT

Performance

3.0L Duratec 30 DOHC 24-valve aluminum V-6 engine with Intake Variable Cam Timing (IVCT) and Electronic Throttle Control (ETC)
 6-speed electronic automatic transmission with overdrive
 17" split-spoke machined-aluminum wheels
 150,000-mile tune-up interval¹
 Dual, stainless steel exhaust system with chromed tips
 Front-wheel drive
 Independent Short- and Long-Arm front suspension with coil springs over shocks
 Multi-link independent rear suspension
 P225/50VR17 all-season performance tires
 Power 4-wheel disc brakes with Anti-lock Brake System (ABS) and Electronic Brake Force Distribution (EBD)
 Power rack-and-pinion steering
 24-mm front and 17-mm rear stabilizer bars
 Traction Assist

Interior

5-passenger seating
 60/40 spring-assisted split-fold rear seat with center armrest and 2 cupholders
 Analog clock
 Carpeted front and rear floor mats
 Cupholders (6)
 Dual-zone Electronic Automatic Temperature Control with secondary steering wheel-mounted controls
 Front seatback map pockets
 Full center console with adjustable armrest and two-tiered storage
 Genuine wood accents in light Figured Maple or dark Ebony
 Grocery bag hooks in trunk
 Leather-wrapped shift knob
 Leather-wrapped steering wheel with genuine wood accents in light Figured Maple or dark Ebony

Overhead console

Power, heated 10-way driver and front-passenger seats with power lumbar
 Power points (2)
 Premium AM/FM/6-disc/MP3 audio system with 6 speakers and speed-compensated volume
 Premium leather-trimmed seating
 Remote, power decklid release
 Smoker's Package, including lighter and ashtray
 Tilt/telescopic steering column

Exterior

Body-color door handles
 Fog lamps
 Quad-beam halogen headlamps
 Light-Emitting Diode (LED) taillamps
 Lincoln waterfall chromed grille
 Power, heated, chromed sideview mirrors with security approach lamps, memory and auto-dimming on driver's side
 Rear-window defroster
 Solar-tinted glass
 Speed-sensitive windshield wipers

Security/Safety

Accessory timed delay
 Autolamp automatic on/off headlamps with delay
 Battery saver
 Belt-Minder[®] safety belt reminder
 Emergency in-trunk release handle
 Front-seat side airbags
 Illuminated entry with theater-dimming feature
 Integrated key fob with trunk release and panic button
 Remote keyless-entry system
 Keyless-entry keypad on driver's door
 Lower anchors and tether anchors for child-safety seats (LATCH)
 Perimeter anti-theft system

Personal Safety System[®] with dual-stage front airbags for driver and front passenger,² safety belt pretensioners, driver's-seat position sensor, crash severity sensor, energy-management retractors, safety belt usage sensors and Front-Passenger Sensing System
 Power door locks
 Rear-door child-safety locks
 3-point safety belts for all seating positions
 Securilock[®] passive anti-theft system
 Side-curtain airbags
 Side-intrusion door beams

Instrumentation/Driver's Controls

Auto-dimming rearview mirror
 White LED-backlit instrument cluster with speedometer, tachometer, fuel level gauge, coolant temperature gauge and message center
 Power windows with global open and one-touch-open/-close for driver and front passenger
 Steering wheel-mounted speed, audio and climate controls
 Universal Garage Door Opener

AVAILABLE EQUIPMENT

17" chrome-aluminum 8-spoke wheels
 DVD Navigation System³
 Heated and cooled driver and front-passenger seats
 High-Intensity Discharge (HID) headlamps
 Power moonroof with global open and one-touch-open/-close
 THX[™] II Certified Premium Sound System with AM/FM 6-disc in-dash CD/MP3, 14 speakers (including 2 subwoofers), 12 amplifier channels, and front/rear center channels

As god of the West Wind in Greek mythology,

Zephyr swept clouds from the sky and Nature smiled. As you ride the wind in Lincoln Zephyr, you'll smile too.

DRIVETRAIN

Engine	3.0L Duratec 30 DOHC V-6
Horsepower	221 hp @ 6250 rpm
Torque	205 lb.-ft. @ 4800 rpm
Compression Ratio	10.0:1
Timing	Intake Variable Cam (IVCT)
Throttle	Electronic Throttle Control
Fuel Injection	Sequential multi-port electronic
Ignition	Coil-on-plug electronic
Layout	Front engine, front-wheel drive
Transmission	6-speed electronic automatic with overdrive
Exhaust	Dual stainless steel [major components] with chromed exhaust tips

CHASSIS

Suspension	Front	Independent Short- and Long-Arm (SLA)
	Rear	Multi-link independent
Stabilizer Bars	Front and rear	
Brakes	Power 4-wheel disc with Anti-lock Brake System (ABS) and Electronic Brake Force Distribution	
Wheels	17" aluminum	
Tires	P225/50VR all-season	

DIMENSIONS

Head Room	front/rear 38.7"/37.8"
Leg Room	42.3"/37.0"
Shoulder Room	56.9"/56.5"
Height	57.2"
Length	190.5"
Width	72.2"
Wheelbase	107.4"
Curb Weight	3438 lbs.
Tread [front/rear]	61.6"/61.3"
Fuel Capacity	17.5 gallons
Luggage Capacity	15.8 cu. ft.
EPA-Estimated Fuel Economy	20 mpg city/28 hwy.





LINCOLN

The perfect accessories.

Zephyr's wheels make quite an impression. At 17" in diameter, they feature a symmetrical-spoke layout that complements the Lincoln star located on the flush center caps. The spoke pattern puts the Lincoln logo in the "crosshairs" like a telescopic sight, drawing the eye toward the wheel's center. **A** Standard: 17" split-spoke machined-aluminum **B** Available: 17" 8-spoke chrome-aluminum.



INTERIOR/EXTERIOR COLORS

Sand/Figured Maple Wood	Light Stone/ Ebony Wood	Dark Charcoal/ Ebony Wood	
■	■	■	Oxford White
■	■	■	Merlot
■	■	■	Dark Blue Pearl
■	■	■	Light Sage
■		■	Dune Pearl
■	■	■	Charcoal Beige
■	■	■	Silver Frost
■	■	■	Tungsten Grey
■	■	■	Black

PLEASE REFERENCE ACCOMPANYING COLOR PALETTE TO VIEW EXTERIOR PAINT COLORS AND LEATHER SEAT TRIM.

ALL-NEW 06 LINCOLN ZEPHYR



LINCOLN



Lincoln has been named the #1 Nameplate in Customer Satisfaction with Dealer Service* by J.D. Power and Associates – for the 2nd year in a row. That's because Lincoln crafts a complete luxury experience designed to exceed your expectations. It starts with complimentary maintenance that makes driving your Lincoln even more of a pleasure. Scheduled maintenance will be performed at an authorized Lincoln service center at no charge throughout your first year of ownership or 12,000 miles, whichever comes first. Added peace of mind comes from a 4-year/50,000-mile bumper-to-bumper New-Vehicle Limited Warranty that covers repair, replacement or adjustment of parts at no additional cost. Your Lincoln Mercury Dealer will provide complete details on all of these privileges.



FORD CREDIT Get the ride you want. Whether you plan to lease or finance, you'll find the choices that are right for you at Ford Credit. Ask your Lincoln Mercury Dealer for details or check us out at www.fordcredit.com.

FORD EXTENDED SERVICE PLAN For a purchase or lease, the Ford Extended Service Plan (ESP) gives you "Peace-of-Mind" protection designed to cover key vehicle components and protect you from the cost of unexpected repairs. Ask your Lincoln Mercury Dealer for an ESP backed by Ford Motor Company and honored at all Ford and Lincoln Mercury dealerships.

FORD MOTOR COMPANY INSURANCE SERVICES Choose the insurance program that's designed for your vehicle – Ford Motor Company Insurance Services. Our program helps you receive the rates and service you deserve. Call 877.367.3847, or visit us at www.fordvip.com for a no-obligation quote. Insurance offered by American Road Services Company (in CA, American Road Insurance Agency), a licensed agency and subsidiary of Ford Motor Company.

Lincoln Test Drive 888.566.8888

Customer Assistance 800.521.4140

Roadside Assistance 800.241.3673

lincoln.com

*J.D. Power and Associates 2004-2005 Customer Service Index (CSI) Study.™ 2005 study based on 99,550 consumer responses. www.jdpower.com.

06LZEPCAT VOL 1 ©2005 Lincoln Mercury, Ford Motor Company