

WWW.HILLERFORD.COM



EXPEDITION
Built for the road ahead.



HILLER FORD

HERE IS THE INFORMATION YOU REQUESTED.

AVAILABLE INCENTIVES ON FORD EXPEDITION

Listed below are just a few of the current available Ford vehicle offers and incentives in your area. For details on these and other great offers, contact your Ford dealer directly.

2005 RETAIL OFFERS FOR ZIP CODE: 53132													
OFFER DATES/VALUE	COMBINABLE CASH OFFERS		-OR-	CASH COMBINED WITH APR OFFERS				-OR-	APR ONLY OFFERS				
VALID DATES: OFFER VALUE:	CASH BACK*	FORD CREDIT BONUS CASH**		FORD CREDIT BONUS CASH**	SPECIAL FINANCING RATES					SPECIAL FINANCING RATES ONLY			
					36 mo.	48 mo.	60 mo.	72 mo.		36 mo.	48 mo.	60 mo.	72 mo.
Expedition													
Valid Dates:	04/05-06/30	04/05-05/31	-OR-	04/05-05/31	04/05-06/30				-OR-	05/10-06/30			
Offer Value:	\$4000	\$1000		\$1000	2.9%	3.9%	4.9%			0.0%	0.0%	0.0%	2.9%

2005 LEASE OFFERS FOR ZIP CODE: 53132			
APPLICABLE MODEL	OFFER DATES/VALUE	COMBINABLE CASH OFFERS	
MODEL NAME	VALID DATES: OFFER VALUE:	RCL CASH*†	FORD CREDIT BONUS CASH**
Expedition	Valid Dates: Offer Value:	04/05-06/30 \$4000	04/05-05/31 \$1000

* Not all buyers will qualify for Ford Credit financing. Please use the chart below to determine the monthly charge per \$1000 financed regardless of down payment. National incentives are effective on retail deliveries from dealer stock through May 31, 2005 but subject to change. A combined customer cash reduced financing rate option is available on most models. Regional programs may vary.

† Not all lessees qualify for Ford Credit RCL. Some payments higher, some lower. Residency restrictions apply. Take new retail delivery from dealer stock by May 31, 2005.

** Take new retail delivery from dealer stock by May 31, 2005. See dealer for complete details.

*** When financed through Ford Credit. Not all buyers will qualify for Ford Credit financing. Take new retail delivery from dealer stock by May 31, 2005. See dealer for qualifications and complete details. Ford Credit Bonus Cash is compatible with Ford Credit Financing Offer.

NATURAL BORN LEADER. AND THEN SOME.

Whether you're trekking through snow-covered country roads or navigating rush hour traffic, Expedition is engineered to take you there — in style. All-new for 2005, a three-valve 5.4L Triton® V8 engine offers revved-up horsepower and torque, plus improved fuel economy.* Also, available AdvanceTrac® now comes with Roll Stability Control™ (RSC) for enhanced handling and control in a variety of driving situations. On the inside, Expedition boasts a range of luxurious amenities — from the Navigation Radio System available on Limited, Eddie Bauer and to Limited's standard heated and cooled front seats. As always, safety remains at the forefront of Expedition's engineering, and this year's model ups the ante. The available Safety and Security Package incorporates both the Safety Canopy™ System and the Reverse Sensing System for added confidence. Thanks to Expedition, you've never been better equipped to take on the road ahead.



Expedition Eddie Bauer 4x4

*EPA estimated 14 city/19 highway mpg, 4x2 model.



1. Thanks to an energy-efficient three-valve design, the new 5.4L Triton® V8 engine offers more horsepower and torque, plus improved fuel economy.*
2. Available AdvanceTrac® with Roll Stability Control™ (RSC) promotes optimum driving control, especially on slippery road surfaces and potentially unstable turns. The system combines confident stopping power, amazing grip, responsive handling and added stability to daily driving.
3. Smooth roads ahead. Expedition's fully Independent Rear Suspension (IRS) allows each wheel to respond to the road independently, delivering precise handling and an outstandingly smooth ride.
4. Sleek, stylish and available seating for up to eight. Eddie Bauer offers premium two-tone leather-trimmed interior for eight.
5. Expedition's updated instrument panel design features easy-to-read gauges and conveniently placed controls. Eddie Bauer and Limited come with duplicate audio/climate controls on the steering wheel.

*EPA estimated 14 city/19 highway mpg, 4x2 model.



A RICH INNER WORLD

As close to home as it gets. Expedition offers a range of interior features that make your driving experience more enjoyable. Weather less than temperate? Expedition's available heated and cooled driver and front passenger seats keep things comfortable. Long drive ahead? Passengers can sit back and catch their favorite movies on the available Rear Seat DVD Entertainment System. And if you take a wrong turn, there's no need to stop for directions. The available in-dash Navigation Radio System uses global positioning satellites to get you back on track. The system offers detailed maps, audible driving directions and will even help you locate nearby restaurants, hotels and other accommodations.* And when you need to make room for extra cargo, the available fold-flat PowerFold™ third-row seat offers the ultimate in convenience. With a single touch of a button, the seat folds flat into the load floor. Push the button again, and it opens back up to allow third-row seating. For added traveling comfort, Expedition boasts the most third-row leg room in its class.**

*Map coverage not available in all areas. See your Ford Dealer for more information.

**Full-size SUV class.

FORD EXPEDITION MODEL LINEUP

EXPEDITION XLS



Powerful. Spacious. Equipped to take you where you want to go.

- 5.4L 3-valve V8 power
- 2nd-row 40/20/40 split bench seat with CenterSlide™
- Independent Rear Suspension
- AM/FM premium CD/cassette Dual Media stereo

Price: **\$33,825***

EPA: +

+ 14 city/19 highway**

EXPEDITION XLT



More Expedition to go around.

- Air conditioning with auxiliary climate controls
- Overhead console with map lights, dual sunglasses holder, front auxiliary A/C controls and conversation mirror
- Tire Pressure Monitoring System (aluminum road wheels only)
- Fog lamps and black running boards

Price: **\$35,850***

EPA: +

+ 14 city/19 highway**

EXPEDITION XLT SPORT



A sporty look to go along with its sporting attitude.

- Dark Shadow Grey tubular step bars
- Dark Shadow Grey bodyside cladding, front and rear fascias, wheel lip moldings
- P265/70Rx17 OWL All-Season (4x2 only)
- Sparkle Silver upper grille and wheel ornaments

Price: **\$36,700***

EPA: +

+ 14 city/19 highway**

EXPEDITION EDDIE BAUER



Price: **\$40,015***
EPA: +

Refined describes this well-equipped traveling companion.

- Air conditioning – dual-zone electronic automatic temperature control (DEATC)
- Memory feature for driver's seat, outside mirrors and power adjustable pedals for 2 different driver settings
- Front captain's chairs in two-tone leather trim with 6-way memory power driver's seat
- AM/FM Audiophile™ Sound System* with 280 watts peak power and much more

+ 14 city/19 highway**

EXPEDITION LIMITED



Price: **\$41,910***
EPA: +

The ultimate Expedition lets you take the comforts along for the adventure.

- Front low-back bucket seats with leather trim, heated and cooled, 10-way power for driver/passenger seats, including power lumbar and recline, driver's side memory
- Power folding mirrors, heated with signal, memory function and security approach lamps
- Real wood steering wheel, leather-wrapped with tilt and duplicate audio and climate controls
- 17" Chrometec™ aluminum wheels

+ 14 city/19 highway**

EXPEDITION KING RANCH

The King of the Expedition Lineup

- Castaño leather on all three seating surfaces, console lid, door trim and grab handles
- Real wood and leather-wrapped steering wheel with audio and climate controls
- Powerfold™ third row seat
- Pueblo Gold step bars
- Unique 17" 5-spoke machined aluminum wheels

Price: **\$43,975***
EPA: +

+ 14 city/19 highway**

* Starting Manufacturing Retail Price, excluding taxes, title, and registration fees. Optional equipment not included.

**EPA estimated city/highway mpg based on base engine/transmission configuration.

FORD EXPEDITION VS. CHEVROLET TAHOE

When it comes to innovation, Expedition emerges a true leader. Want proof? Take a look at how Expedition measures up against the Chevrolet Tahoe. For even more comparisons, visit www.fordvehicles.com

Highest percentage of repeat buyers of any full-size sport utility vehicle.*

- Polk Automotive Loyalty Award



Specifications	2005 Ford Expedition Eddie Bauer 4x4 5.4L V8	2005 Chevrolet Tahoe 4WD 5.3L V8
Standard Seating	8	6
Automatic Climate Control	Standard	Optional
AM/FM Radio	Standard	Standard
Cassette Player	Optional	Standard
CD Player	Standard	Standard
6-Disc CD Changer	Standard	Optional
Power Windows	Standard	Standard
Power Door Locks	Standard	Standard
Automatic Transmission	Standard	Standard
4-Wheel ABS Brakes	Standard	Standard
Horsepower@RPM	301@5000	295@5200
Torque@RPM	365@3750	330@4000
Brakes (rear)	Disc	Disc
Wheelbase (in.)	119	116
Front Head Room (in.)	39.7	40.7
Front Leg Room (in.)	41.2	41.3
Maximum Cargo Volume (cu. in.)	110.5	104.6
Third-Row Folding Seat	Optional	Not Available

*According to R. L. Polk statistics for the full-size sport utility vehicle segment in the 2003 model year, Ford Expedition ranked highest by having the greatest percentage of households return to purchase or lease another Expedition.



© Automotive Information Center™ August 2004. All Rights Reserved. This information is supplied for personal use only and may not be used for any commercial purpose whatsoever without the express written consent of Automotive Information Center. Automotive Information Center™ makes no guarantee or warranty, either express or implied, including without limitation any warranty of accuracy, merchantability, or fitness for particular purpose, with respect to the data presented here.



AHEAD OF THE PACK IN SAFETY

When it comes to safety, Ford Expedition consistently stands out from the competition. Expedition has been the only full-size SUV to score the highest government frontal crash test rating for driver and passenger five years in a row.* It all begins with the standard Personal Safety System,TM which automatically optimizes airbag and safety belt function in the event of an accident. Within milliseconds of a front collision, specially designed sensors gather critical safety information: the driver's seat position relative to the steering wheel, whether safety belts are being used and the severity of the impact. The system then adjusts airbag deployment to enhance front occupant protection.

New for 2005, Expedition offers an available Safety and Security Package that combines two innovative features: the Safety CanopyTM System,** featuring patented side curtain airbags and the Reverse Sensing System, which alerts you to certain objects in your path when you are backing up. Expedition also comes with four-wheel anti-lock power disc brakes that are among the largest in its class and offer outstanding stopping power. Plus, AdvanceTrac[®] with Roll Stability ControlTM (RSC) offers enhanced peace of mind — even on slippery surfaces or sharp turns.

*2001-2005 model years.

**Always wear your safety belt and secure your children in the rear seat.



FEATURED EXPEDITION SPECIFICATIONS

INTERIOR FEATURES - SEATING	XLS	XLT	XLT Sport	Eddie Bauer	King Ranch	Limited
Front 40/60 seats: power driver's high-back split bench cloth with driver manual lumbar and recline	S	S	S	-	-	-
Front captain's chairs in cloth with 6-way power driver's seat and driver/passenger manual lumbar	-	O	O	-	-	-
Front captain's chairs in two-tone leather trim with 6-way power driver's seat with memory and driver/passenger manual lumbar	-	-	-	S	-	-
Front captain's chairs in Castaño leather trim with 6-way power driver's seat with memory and driver/passenger manual lumbar/recline	-	-	-	-	S	-
Front captain's chairs in leather trim with 6-way power driver's seat and driver/passenger manual lumbar	-	O	O	-	-	-
Front low-back perforated leather-trimmed bucket seats with 10-way power driver and passenger adjustment (including power lumbar and recline), 2-way adjustable headrests, heated and cooled seats (driver and passenger w/3 settings), driver's side memory (2 positions) and power recliner	-	-	-	-	S	-
2nd-row seating 40/20/40 (20 portion with CenterSlide™ and 3-point safety belt) split bench, reclining and fold-flat with carpet on back side, 3 ISO fixed anchors and child tethers. E-Z entry on both 40 sides to 3rd-row seat	S	S	S	S	S	S
3rd-row 60/40 split bench seat, fold-flat-to-floor, head restraint on outboard positions, 1 child tether (vinyl material when leather trim is selected)	S	S	S	S	S	-
Climate-controlled heated/cooled front seats with power driver/passenger seat	-	-	-	O	S	-
PowerFold™ 3rd-row seat (requires front captain's/bucket seats)	-	O	O	O	O	S
Captain's chairs, 2nd-row dual bucket seats with inboard armrests (NA with front bench seat)	-	O	O	O	O	O

INTERIOR FEATURES - CLIMATE CONTROL	XLS	XLT	XLT Sport	Eddie Bauer	Limited	King Ranch
Air conditioning manual	S	-	-	-	-	-
Manual air conditioning with rear auxiliary A/C and heat controls	-	S	S	-	-	-
Dual-zone electronic automatic temperature control (DEATC) with auxiliary climate controls and exterior temperature display	-	-	-	S	S	S
Rear floor heat ducts	S	S	S	S	S	S

INTERIOR FEATURES - ENTERTAINMENT SYSTEMS	XLS	XLT	XLT Sport	Eddie Bauer	Limited	King Ranch
AM/FM premium CD/cassette dual media with clock, 4 premium speakers (120 watts peak), driver-adjusted speed-compensated volume, RDS equipped	S	S	S	O	-	-
AM/FM premium in-dash 6-CD changer with clock, 4 premium speakers (120 watts peak), driver-adjusted speed-compensated volume, RDS equipped	-	O	O	-	-	-
AM/FM Audiophile™ Sound System with in-dash 6-CD changer and clock, 7 premium speakers (including subwoofer; 260 watts peak), driver-adjusted speed-compensated volume, RDS equipped, partial mute with reverse sensing activation	-	-	-	S	S	S
Navigation Radio System, in-dash (NA in Alaska or Hawaii) on-board CD-based navigation system, AM/FM console-mounted 6-CD changer, 260 watts total power and RDS	-	-	-	O	O	O
Rear Seat DVD Entertainment System with 7" drop-down LCD video screen, wireless headphones and infrared remote (requires in-dash 6-CD changer; NA with front bench seat)	-	O	O	O	O	O

INTERIOR FEATURES - COMFORT AND CONVENIENCE	XLS	XLT	XLT Sport	Eddie Bauer	King Ranch	Limited
Color-keyed instrument panel with black finish, pull-out ashtray and 2 cupholders	S	S	S	-	-	-
Color-keyed instrument panel with black finish	-	-	-	S	S	S
Instrumentation (analog; includes new cluster design): voltmeter, oil pressure, coolant temperature, speedometer, tachometer, fuel and electronic cluster display with odometer, trip odometer and compass	S	S	S	S	S	S
Message center – million-mile odometer, trip odometer, average fuel economy, distance to empty, trip elapsed time, compass, engine oil life, door/liftgate ajar and outside temperature readout	-	O	O	S	S	S
Warning lights – door/liftgate ajar, fasten safety belts, anti-lock brakes, cruise control, engine check, charge system, airbag, high beams on, parking brake, TPMS (if equipped), fuel cap, low fuel, low washer, turn signal, O/D off and check gauges (in message center for Eddie Bauer and Limited)	S	S	S	S	S	S
Homelink® universal transmitter	-	-	-	O	O	O
Reverse Sensing System (only available in the Safety and Security Package)	-	O	O	O	O	O
Lighting – glove box, front door approach, front dome/map, rear cargo, illuminated entry, theater lighting	S	-	-	-	-	-
Lighting – glove box, front door approach, front dome/map, rear cargo, illuminated entry, theater lighting, 2nd-row map lights	-	S	S	S	S	S
Accessory delay – power windows, optional power quarter windows (Eddie Bauer and Limited), audio, optional Rear Seat Entertainment System and optional moonroof	S	S	S	S	S	S
Power door locks with childproof rear locks	S	S	S	S	S	S
Power windows with one-touch-down on driver's side	S	S	S	S	S	S
Power quarter flip windows (requires Safety and Security Package)	-	-	-	O	O	O
Power adjustable accelerator and brake pedals (with memory on Eddie Bauer and Limited)	-	O	O	S	S	S
Front speed-sensitive/2-speed with variable intermittent fluidic washer	S	S	S	S	S	S
Rear intermittent/washer/defroster	S	S	S	S	S	S
Rearview mirror, day/night	S	S	S	-	-	-
Rearview mirror, auto-dimming electrochromic (available with XLT, XLT Sport and NBX as part of Technical Convenience Package)	-	-	-	S	S	S
Steering wheel – color-keyed, polyurethane, manual tilt	S	S	S	-	-	-
Steering wheel – color-keyed, leather wrapped, tilt, duplicate climate and radio controls	-	-	-	S	-	-
Steering wheel – real wood, color-keyed, leather-wrapped with tilt and duplicate climate and radio controls	-	-	-	-	S	S
Speed control	S	S	S	S	S	S
Visors – color-keyed cloth with auxiliary visors	S	-	-	-	-	-
Visors – color-keyed cloth with auxiliary visors and dual illuminated mirrors	-	S	S	S	S	S
Overhead console with map lights, dual sunglasses holder, front auxiliary A/C controls, conversation mirror (NA with moonroof)	-	S	S	-	-	-
Overhead console with map lights, dual sunglasses holder, front auxiliary A/C controls, conversation mirror (mini console available with power moonroof), power rear quarter window switch if equipped	-	-	-	S	S	S
Cupholders – instrument panel (2), door trim panels (4) and 3rd-row quarter trim panels (4 without rear auxiliary A/C, 3 with auxiliary A/C)	S	S	S	-	-	-
Cupholders – front console (4 – 2 for front row, 2 for 2nd row), door trim panels (4) and 3rd-row quarter trim panels (3)	-	-	-	S	S	S

Large floor storage bin, coin holder, rear passenger radio controls, headphone jacks, tissue holder, cupholders (2 front/2 rear), soft padded cover, 2 powerpoints (1st/2nd rows), auxiliary A/C controls, climate-controlled seat switches (if equipped), AdvanceTrac® w/RSC switch (if equipped), pen/pencil holder	-	-	-	S	S	S
Keyless entry pad – ergonomic placement (optional only in the Technical Convenience Package; standard in Eddie Bauer and Limited)	-	O	O	S	S	S
Passenger assist handles – 1st row (2), 2nd row (2)	S	S	S	S	S	S
Powerpoints – instrument panel, rear cargo area	S	S	S	-	-	-
Powerpoints, floor console (1 in front, 1 in 2nd row), 1 in passenger-side footwell, 1 in rear cargo area	-	-	-	S	S	S
Floor mats, carpeted, 1st and 2nd rows	-	S	S	S	S	S
Technical Convenience Package include: auto-dimming electrochromic rearview mirror, keyless entry keypad and heat functionality added to exterior power mirrors with security approach lamps on XLT, XLT Sport and NBX	-	O	O	S	S	S

EXTERIOR FEATURES - APPEARANCE	XLS	XLT	XLT Sport	Eddie Bauer	Limited	King Ranch
Bumper – front/rear fascia painted body color upper and molded in color, XLT lower accent Medium Dark Platinum	S	S	-	-	-	-
Bumper – front/rear fascia painted A-gloss body color with painted Dark Shadow Grey lower	-	-	S	-	-	-
Bumper – front/rear fascia painted body color with painted Pueblo Gold lower	-	-	-	S	-	S
Bumper – front/rear fascia painted body color	-	-	-	-	S	-
Grille – Medium Dark Platinum	S	S	-	-	-	-
Grille – Sparkle Silver	-	-	S	-	-	-
Grille – Satin Nickel	-	-	-	S	-	S
Grille – body color, monochrome	-	-	-	-	S	-
Center high-mounted LED stoplight	S	S	S	S	S	S
Fog lamps	-	S	S	S	S	S
Taillights – complex reflectors with two-tone color lenses and built-in backup lighting	S	S	S	S	S	S
Headlights – complex reflector quad-beam system (with black-out treatment on NBX and Limited) with integral park/turn lamps	S	S	S	S	S	S
Autolamp automatic on/off headlamps	S	S	S	S	S	S
Liftgate with flip-up glass	S	S	S	S	S	S
Luggage rack, black with raised side rails	S	S	S	S	-	S
Luggage rack, black with crossbars	-	O	O	O	-	-
Luggage rack, chrome with black crossbars	-	-	-	-	S	-
Running boards – black, nonilluminated	-	S	-	-	-	-
Running boards – tubular step bars (Dark Shadow Grey w/XLT Sport)	-	-	S	-	-	S
Running boards – color-keyed Pueblo Gold, nonilluminated	-	-	-	S	-	-
Running boards – body color, nonilluminated	-	-	-	-	S	-
Black power mirrors with security approach lamps	S	S	S	-	-	-
Black power heated memory mirrors with security approach lamps and turn signals (color-keyed, power-folding on Limited)	-	-	-	S	S	S
Clearcoat paint	S	S	S	S	S	S

EXTERIOR FEATURES - PROTECTION	XLS	XLT	XLT Sport	Eddie Bauer	Limited	King Ranch
---------------------------------------	-----	-----	-----------	-------------	---------	------------

Lower bodyside cladding, Medium Dark Platinum	S	S	-	-	-	-
Lower bodyside cladding, A-gloss, accent color Dark Shadow Grey	-	-	S	-	-	-
Lower bodyside cladding, Pueblo Gold	-	-	-	S	-	S
Lower bodyside cladding, body color	-	-	-	-	S	-
Wheellip molding, A-gloss, accent color Dark Shadow Grey	-	-	S	-	-	-
Wheellip molding, Pueblo Gold	-	-	-	S	S	-
Wheellip molding, body color	-	-	-	-	S	-
Skid Plates (4x4) (not available with air suspension)	-	-	-	-	-	O

EXTERIOR FEATURES - WINDOWS AND GLASS	XLS	XLT	XLT Sport	Eddie Bauer	Limited	King Ranch
Privacy Glass in rear quarter windows, rear doors, rear backlight	S	S	S	S	S	S
Power moonroof (requires Safety and Security Package and front captain's/bucket seats)	-	O	O	O	O	O
Solar tinted windshield and front door windows	S	S	S	S	S	S

POWER AND HANDLING - POWER	XLS	XLT	XLT Sport	Eddie Bauer	Limited	King Ranch
5.4L 3V SOHC V8 engine	S	S	S	S	S	S
4-speed automatic O/D transmission	S	S	S	S	S	S
Alternator 110 amp	S	S	S	S	S	S
Maintenance-free battery; 72 AH (650 C.C.A.) with battery saver feature	S	S	S	S	S	S
Fuel tank: 28 gallons	S	S	S	S	S	S

POWER AND HANDLING - HANDLING	XLS	XLT	XLT Sport	Eddie Bauer	Limited	King Ranch
2-wheel drive	S	S	S	S	S	S
4-wheel drive with Control Trac®	S	S	S	S	S	S
Variable assist power rack-and-pinion steering	S	S	S	S	S	S
Front/rear stabilizer bars	S	S	S	S	S	S
Gas shock absorbers	S	S	S	S	S	S
Specially tuned off-road shocks	-	-	-	-	O	-
AdvanceTrac® with Roll Stability Control™ (requires front captain's/bucket seat and non-limited slip axle)	-	O	O	O	O	O
4-corner load-leveling air suspension with message center (not available with skid plates)	-	O	O	O	O	O
Limited slip rear axle, 3.73 ratio (not available with AdvanceTrac® with Roll Stability Control™; NA on XLS 4x2)	O	O	O	O	O	O
Front axle – 3,350 lbs. (4x2 and 4x4)	S	S	S	S	S	S
Rear axle – independent, 4,128 lbs.	S	S	S	S	S	S
Tow hooks, front (4x4 only)	S	S	S	S	S	S
Tire pressure monitoring system (available on road wheels only)	-	S	S	S	S	S
Heavy-Duty Trailer Towing Package includes: Class IV trailer hitch receiver, wiring harness with 4- and 7-pin connectors, heavy-duty auxiliary transmission oil cooler, heavy-duty radiator, electronic braking wiring kit (requires 3.73 axle)	-	O	O	O	O	O

POWER AND HANDLING - WHEELS AND TIRES	XLS	XLT	XLT Sport	Eddie Bauer	Limited	King Ranch
17" painted steel wheels	S	-	-	-	-	-

17" aluminum wheels	-	S	S	-	-	-
17" machined aluminum wheels	-	-	-	S	-	-
17" 5-spoke machined aluminum wheels with Satin Nickel pockets	-	-	-	-	-	S
17" Chrometec™ aluminum wheels	-	-	-	-	S	-
P265/70R17 all-season BSW tires (XLS ; XLT 4x2 models)	S	S	-	-	-	-
P265/70R17 all-terrain OWL tires (4x4)	-	S	S	S	S	S
P265/70R17 all-season OWL tires (4x2)	-	O	S	S	S	S
Underbody-mounted full-size spare tire	S	S	S	S	S	S
Trailer Tow Package – integrated Class IV hitch receiver with 4-pin connector	S	S	S	S	S	S

SAFETY AND SECURITY - SAFETY	XLS	XLT	XLT Sport	Eddie Bauer	Limited	King Ranch
AdvanceTrac® with Roll Stability Control™ (requires front captain's/bucket seat and non-limited slip axle)	-	O	O	O	O	O
Color-keyed lap/shoulder belts with adjustable D-rings and 3-point for all outboard passengers	S	S	S	S	S	S
Personal Safety System™ includes: safety belt pretensioners, driver's seat position sensor, dual-stage front airbags, front crash severity sensors, load-limiting retractors	S	S	S	S	S	S
Second Generation driver and right front passenger airbags*	S	S	S	S	S	S
Side intrusion door beams	S	S	S	S	S	S
Safety and Security Package includes: Safety Canopy™ and Reverse Sensing System with Message Center	-	O	O	O	O	O
4-wheel disc /4-wheel anti-lock braking system with brake assist	S	S	S	S	S	S

SAFETY AND SECURITY - SECURITY	XLS	XLT	XLT Sport	Eddie Bauer	Limited	King Ranch
SecuriLock® Passive Anti-Theft System	S	S	S	S	S	S
Remote keyless entry – 2 key fobs (4 buttons) and illuminated entry	S	S	S	S	S	S

S = Standard O = Optional - = Unavailable

Ford Division reserves the right to change product specifications at any time without incurring obligations.

† Always wear your safety belt and secure children in the rear seat.

DEALER ACCESSORIES

Your local Ford Dealer has just the right car for you, plus a host of accessories to tailor it perfectly to your needs.



Rooftop Carrier

Take even more gear along with this sturdy rooftop carrier. The large cargo box features a 16.9-cu.-ft. capacity – roughly enough room to stow four sets of golf clubs, plus shoes and accessories.



Mobile-ease Hands-free Communication System

The Mobile-Ease hands-free communication system lets you place and receive calls without taking a hand off the wheel. Works in tandem with Bluetooth® technology and your Bluetooth-equipped cell phone.



Remote Start

No more long waits in a too cold – or too hot – vehicle. Remote start lets you turn on the ignition from up to 500 feet away. You can also use the device to lock and unlock doors and activate the panic button.

WHY FORD CREDIT?

At Ford Credit, auto financing is our specialty. Whether you purchase or opt for a Red Carpet Lease, we offer a range of terms and features that make your experience hassle-free. Contact your local Ford Dealer or visit us on the Web at www.fordcredit.com.



ROADSIDE ASSISTANCE

Every new Ford includes the assurance of a 24-hour emergency Roadside Assistance Program provided during the 3-year/36,000-mile limited warranty period. Ask your Ford Dealer for complete details on this program, which includes such services as fuel delivery, tire change, jump start, or even help when you're locked out of your vehicle.

NEW VEHICLE LIMITED WARRANTY

Under the New Vehicle Limited Warranty, you receive bumper-to-bumper coverage for 3 years/36,000 miles with no deductible. You also receive corrosion perforation coverage for five years with unlimited mileage and no deductible. Ask your Ford Dealer for a copy of the warranty.

COLOR OPTIONS & WHEEL STYLES



17" Painted Steel Wheel
Standard on XLS



17" Aluminum Wheel
Standard on XLT and
XLT Sport



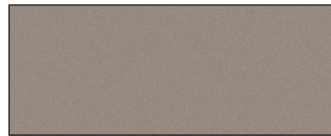
17" Machined
Aluminum Wheel
Standard on Eddie Bauer



17" Chrometec™
Aluminum Wheel
Standard on Limited



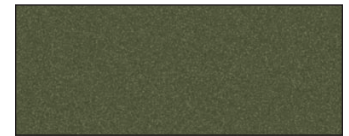
Oxford White



Pueblo Gold Metallic



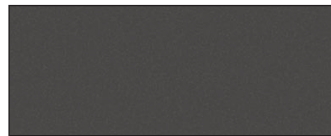
Redfire Metallic



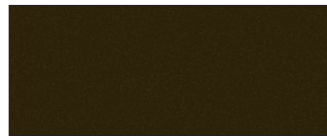
Estate Green Metallic



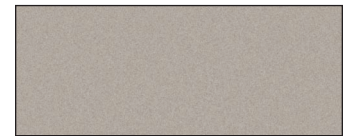
Silver Birch Metallic



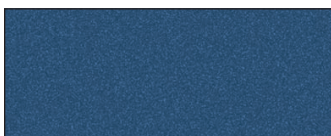
Dark Shadow Grey Metallic



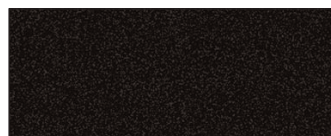
Dark Stone Metallic



Cashmere Tri-Coat Metallic



Medium Wedgewood
Blue Metallic



Black

HELPFUL FORD LINKS

Now that you've learned more about this Ford vehicle, we would like to recommend the following links that can help you get all the information you need about finding, purchasing and owning the Ford that's just right for you:



BUILT FOR THE ROAD AHEAD.

[Fordvehicles.com](#) - The best place to get information about Ford cars, trucks, and SUVs.

[Get a Price Quote](#) - Request a quick price quote from a Ford Dealer in your area.

[Competitive Comparisons](#) - Get a detailed comparison of your favorite Ford vehicle and how it stacks up against the competition.

[Payment Calculator](#) - Find out how much you'll have to spend on your new vehicle with Ford Credit's Payment Estimator.

[Build & Price Your Ford](#) - Build and price your vehicle online - From performance to interior colors and everything in between.

[Search Dealer Inventory](#) - Find your vehicle at a Dealer near you.

[Locate a Dealer](#) - Our dealer locator lets you view your Ford dealer's services, hours, special promotions, and check new and used inventory.

[Incentives & Financing](#) - Keep up to date with current incentives and financing offers in your area.

[Compare Ford SUVs](#) - Visit the SUV Smart Guide© and find the Ford SUV that's right for you.

[Schedule a Test Drive](#) - Sign up online to drive a next generation of Ford vehicle at a dealership near you.

[Certified Pre-Owned](#) - Ford Quality Checked Certified Pre-Owned Dealers - For pre-owned vehicles with Ford confidence!

[Ford Accessories Store](#) - These great accessories can make your Ford vehicle truly unique.

[Ford Credit](#) - Ford Credit online vehicle financing offers the tools you need to aid in your purchase decision including a Payment Estimator and instant credit approval

[My Ford](#) - The Official Website for Ford Vehicle Owners. Personalized maintenance schedules, exclusive offers & incentives, your service expense log and much more!

Disclaimer

Competitive comparisons based on publicly available information and Ford certification data at time of brochure creation. Some features discussed may be optional. Vehicles shown may contain optional equipment. Features shown may be offered only in combination with other options or subject to additional ordering requirements or limitations. Following creation of the brochure, certain changes in standard equipment, options and the like or product delays, may have occurred which would not be included in these pages. Your Ford Dealer is the best source for up-to-date information. Ford Division reserves the right to change product specifications at any time without incurring obligations.