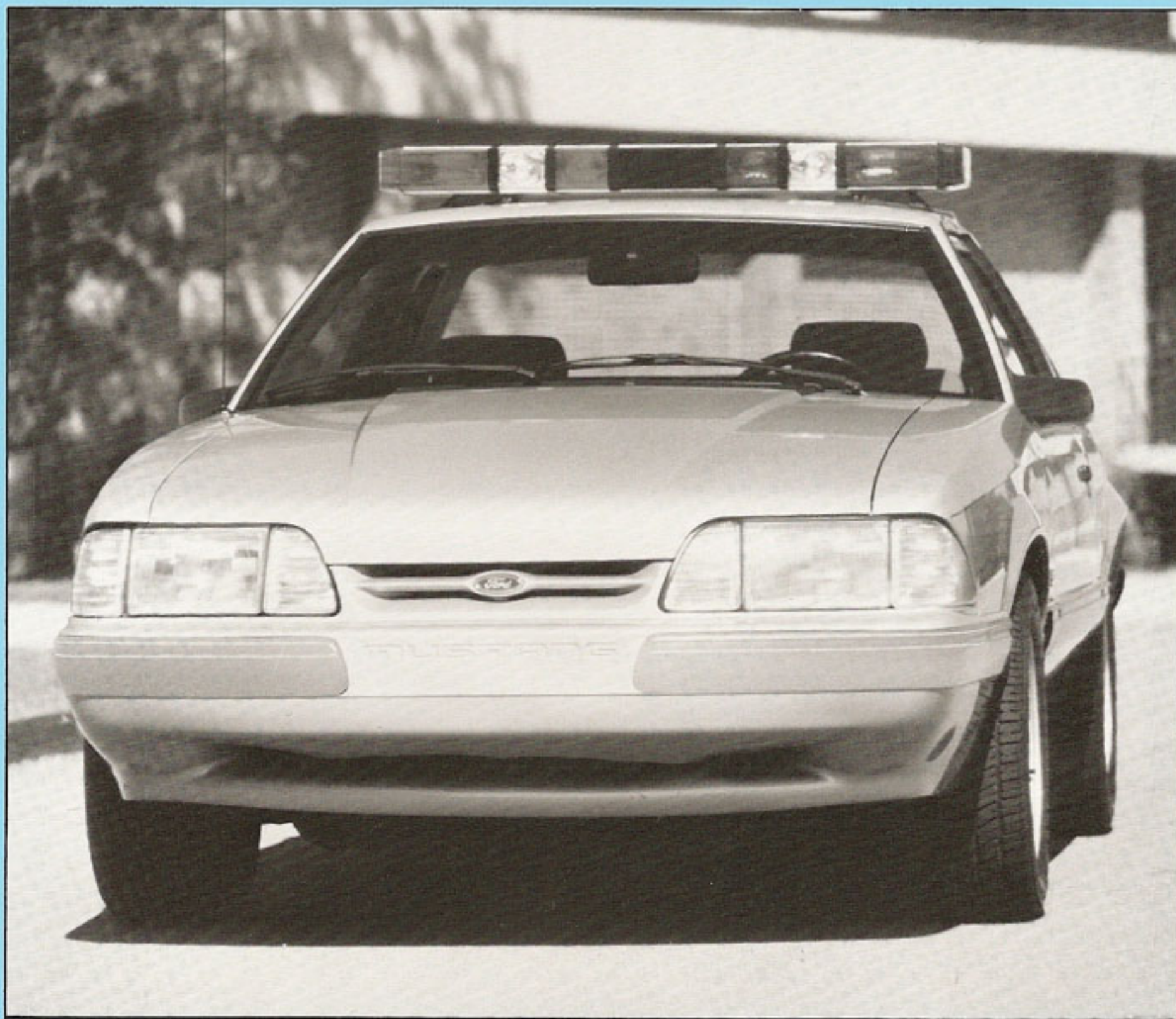


1992 FORD MUSTANG SPECIAL SERVICE PACKAGE



1992 MUSTANG LX 5.0L SPECIAL SERVICE PACKAGE

The 1992 Mustang continues to provide an excellent high-speed traffic control vehicle for law enforcement agencies. Available only on the Mustang LX 5.0L series 2-door sedan, the Special Service Package features a 225-horsepower 5.0L (302-CID) HO V-8 engine with sequential multi-port electronic fuel injection. This high-performance engine is teamed with a standard 5-speed manual overdrive or optional 4-speed automatic overdrive transmission.

New for 1992

- Body-color bodyside moldings and bumper rub strip
- New dome lamp
- Four-way power driver's seat option

LX 5.0L MAJOR STANDARD FEATURES

- Air bag supplemental restraint system – driver only
- Alternator, 75-amp.
- Ashtrays, front and rear
- Axle, Traction-Lok 8.8-inch
- Battery, 58-amp. maintenance-free heavy-duty – (540 CCA) with 100 minute reserve capacity
- Belts, safety – lap/shoulder belts for front/rear passengers
- Brakes, power front disc/rear drum
- Bumpers – body-color fascias front and rear with body-color rub strips
- Cigarette lighter
- Clock, electronic (integral with AM/FM stereo radio)
- Console with armrest
- Coolant recovery system
- Demisters, side window
- Disc brake rotor shields, metal
- Engine, 5.0L HO V-8 with sequential multi-port fuel injection
- Exhaust system, dual with stainless tailpipe terminations
- Footrest, driver's
- Fuel cap, tethered
- Fuel tank capacity – 15.4 gallons
- Glass, tinted (complete)
- Glove box with lock
- Halogen headlamps, aerodynamic
- Heater/defroster/AC vents with positive shut-off vents
- Horn, dual-note
- Instrumentation includes tachometer, trip odometer, voltmeter, temperature, fuel and oil pressure gauges and alert lights for check oil, low coolant, low fuel, low washer fluid
- Light Group – Includes:
 - Ashtray, front
 - Dome switches, front door courtesy
 - Engine compartment
 - Glove box
 - Headlamps-on alert chimes
 - Luggage compartment
- Map lamp, pivoting
- Map pockets, door
- Mirrors, dual remote-control (RH convex)
- Mirrors, dual illuminated visor with covers
- Molding, body-color bodyside protection
- Paint stripe, color-coordinated bodyside
- Parking brake – tunnel-mounted

- Radio, electronic AM/FM stereo seek with four speakers and integral clock
- Seats, articulated sport with cloth trim and head restraints and power lumbar support
- Sound insulation package, luxury
- Speedometer – 140 mph
- Stabilizer bars, front (1.3-inch diameter) and rear (.79-inch diameter)
- Stalk-mounted controls – Includes:
 - Turn signals
 - Wipers/washers
 - High beam headlamps
 - Flash-to-pass feature
- Steering, power rack-and-pinion with increased effort
- Steering wheel, leather-wrapped
- Suspension – modified MacPherson strut with stabilizer bar front, and variable-rate coil springs, four-bar-link and quadra-shock rear
- Tires, P225/55ZR16 BSW all-season performance
- Transmission, 5-speed manual overdrive
- Wheels, 16" x 7" cast aluminum, 5-spoke
- Windshield wipers, interval

SPECIAL SERVICE PACKAGE CONTENT

(ADDS TO OR REPLACES STANDARD FEATURES)

- Air deflector, front lower radiator
- Decklid release, remote (relocated left of steering column)
- Engine oil cooler
- Front floor pan, reinforced (both sides)
- Hose clamps, aircraft-type radiator and heater
- Locking system, single key: each vehicle key coded differently
- Oil cooler, automatic transmission – external front-mounted
- Restrictor, heater hose inlet
- Seats, front bucket, reclining, heavy-duty, low-back cloth with head restraints (replaces articulated sport seat)
- Sound absorber, underhood – deleted
- Spare tire and wheel – conventional
- Speedometer head assembly – certified calibration 0-160 mph, in 2 mph increments
- Tires, P215/65R15 95V BSW all-season performance Goodyear Eagle GT + 4 (replaces P225/55ZR16)
- Wheels, 15" x 7" cast aluminum, 10-hole (replaces 16" x 7" cast aluminum)

This special service vehicle does not meet Ford Motor Company durability requirements for police packages, and recommended use is for high-speed highway traffic law enforcement service.

OPTIONS

In addition to the Special Service Package equipment, an extensive list of optional equipment and accessories is available to further tailor Mustang to the specific needs of various law enforcement agencies.

RPO – (REGULAR PRODUCTION OPTIONS)

	Option Code
• Air conditioning, manual.....	572
• Convenience Group	60K
Includes:	
– Cargo tie-down net	
– Front floor mats	
• Defroster, rear window (required in New York state)	57Q
• Paint, clearcoat	*
• Power Equipment Group.....	61A
Includes:	
– Power Lock Group	
– Dual electric remote-control mirrors	
– Power side windows	
• Radio credit option	58Y
• Radio, electronic AM/FM stereo with cassette tape player and clock.....	589
• Seat, 4-way power driver's.....	217
• Sound system, premium	913
• Speed control.....	525
• Tires, P225/55ZR16 BSW performance unidirectional (NA with Special Service Package).....	T26
• Transmission, automatic overdrive	44T

LPO – (LIMITED PRODUCTION OPTIONS)

	Option Code
• Bracket, front license plate.....	153
• Heater, engine block immersion (600 watts).....	41H

DSO – (DEALER SPECIAL ORDERS)

	Option Code
• Alternator, 130-amp.	ZAB
• Decklid release, remote (relocated right of steering column)	ZQC
• Hoses, silicone with special hose clamps (water bypass – available)	a/
• Light switches, inoperative door courtesy	ZLA
• Molding delete, front doors only.....	ZMB
• Paint stripes, delete	ZMC
• Radio noise suppression (RFI) package – Police radio	ZRI
• Special Service Package	*
• VASCAR speedometer cable (2-piece)	*

* Contact Dealer For Option Code

a/ Included in some Special Service Packages. Not available as a stand-alone option

DIMENSIONS AND CAPACITIES

General (inches)	
Wheelbase	100.5
Overall Length	179.6
Overall Height	52.1
Overall Width	68.3
Minimum Ground Clearance	4.5
(at converter grass shield)	
Tread – Front	57.9
– Rear.....	57.0
Curb Weight (lbs.)	3037
Front Compartment (inches)	
Head Room.....	37.0
Shoulder Room.....	55.5
Hip Room.....	56.1
Leg Room – Maximum.....	41.7
Rear Compartment (inches)	
Head Room.....	35.9
Shoulder Room.....	54.3
Hip Room.....	47.1
Leg Room – Minimum.....	30.7
Luggage Compartment Capacity (cu. ft.)	10.0
EPA Passenger Volume Index (cu. ft.)	83.5
Fuel Tank Capacity (gals.)	15.4

POWER TEAM DATA

ENGINE	5.0L (302-CID) SEFI HO V-8	
	5-Spd. Man. OD	Automatic Overdrive
Transmission	5-Spd. Man. OD	Automatic Overdrive
Axle Ratio	3.08 ^(a)	2.73 ^(a)
Horsepower (Hp/RPM)	225 @ 4200	225 @ 4200
Torque (Ft. Lbs./RPM)	300 @ 3200	300 @ 3200
EPA Fuel Economy City/Hwy	17/24	18/25

(a) Axle ratios used in 1991 Michigan State Police (MSP) certification tests.





Law enforcement agency service places strong demands on an automobile, making vehicle quality especially important.

For 11 consecutive years, Ford quality has led all other American car companies, based on an average of owner-reported problems in a series of surveys of 1981-'91 models designed and built in North America.

**Contact Your Ford Dealer for More Information –
Including Scheduled Maintenance and the Optional Fleet Extended Service Plan.**



Ford Division
General Fleet Office

Illustrations and information presented herein were correct when approved for printing. Ford Division reserves the right to discontinue or change at any time, specifications or designs without incurring obligations. Some features shown or described are optional at extra cost. Most options offered on all models. Some options are required in combination with other options. Always consult your Ford Dealer for the latest most complete information on models, features, prices and availability.