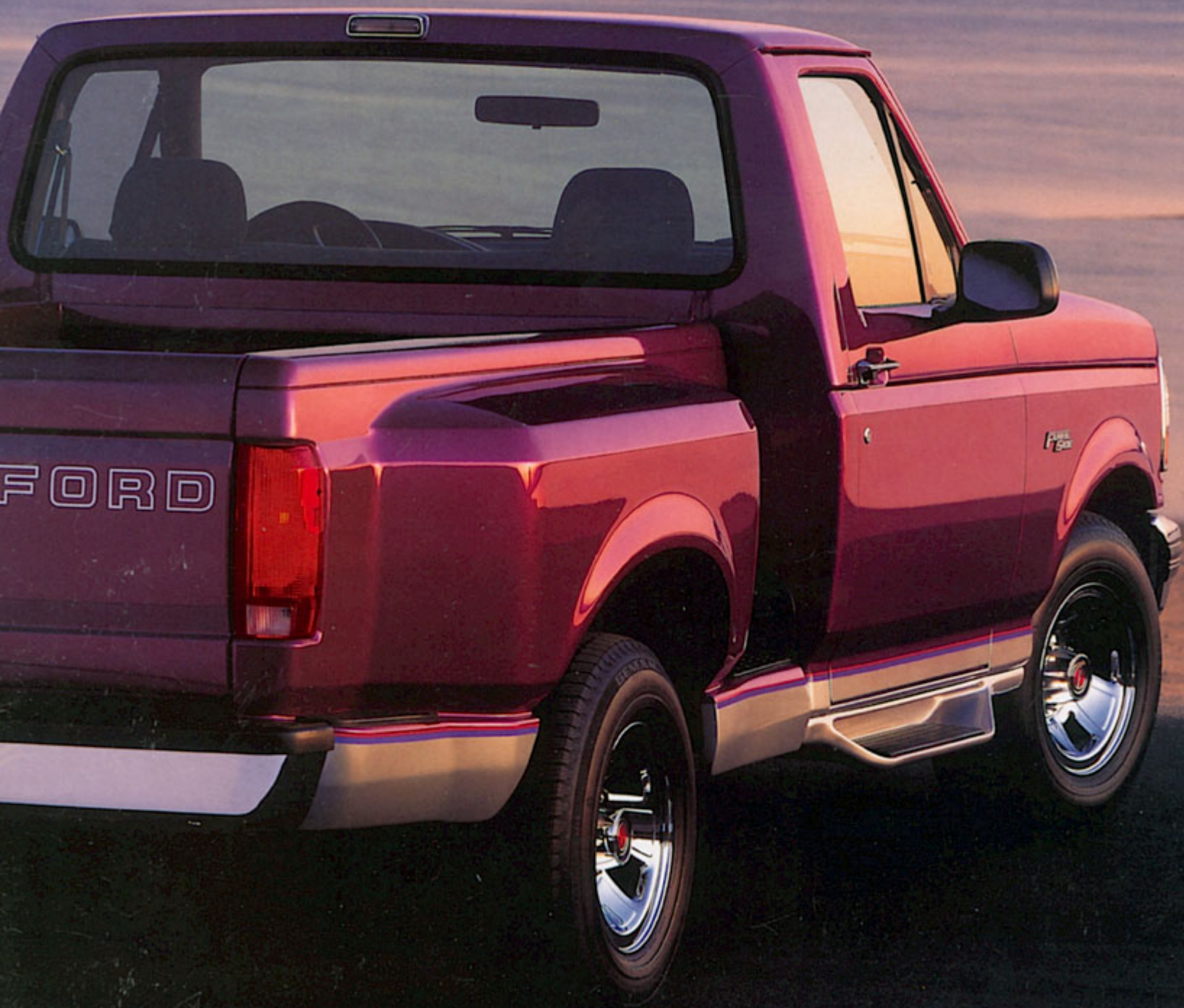


1 9 9 2 F O R D F - S E R I E S

# Flareside





## JUST FOR THE FUN OF IT.

There's an old saying: "Everyone should own a red sports car...just once."

That may have been true. Thirty years ago.

Today, there's a new attitude in America: "Everyone should own a truck...just for the fun of it."

There's been an evolution in trucks. And the way you look at them.

Introducing the new addition to the Ford F-Series — the 1992 Flareside. The truck with a personality as unique as yours. With the versatility to go wherever you want. Any way you want to get there.

Choose the sporty XLT or the strikingly different "Nite" truck. SuperCab or Regular Cab. 4x2 or 4x4. With three electronically fuel injected engines. Manual or automatic transmissions.

Paint the XLT in one of four vibrant Clearcoat colors that match the excitement under the hood: Iris, Electric Red, Bimini Blue, Silver Metallic. Or non-Clearcoat Oxford White.

The XLT, pictured to the right, with chrome style steel

wheels is driven by the standard 4.9L EFI I-6 engine matched to a 5-speed manual overdrive transmission.

The "Nite" truck comes with the responsive 5.0L EFI V-8 and 5-speed manual overdrive stick.



The "Nite" model is Raven Black with special bodyside tape stripes, sliding rear window, special "Nite" nomenclature, forged aluminum deep dish wheels, and a choice of interior colors: Dark Charcoal, Scarlet Red or Crystal Blue.

All Flaresides feature standard power steering. Power brakes with rear anti-lock system. A Power Point electrical accessory outlet. Five P235/75R15XL All Season radials. Full instrumentation: a voltmeter plus oil pressure and temperature gauges.

*The short-wheelbase Flareside, with newly styled door steps plus pickup box with fenders and side steps, is unmistakably unique.*



## Ford Trucks. The Best Never Rest.

No one knows more about trucks than Ford. We've been building them for seventy-five years.

So keep one thing in mind. Although the 1992 Flareside is new, and offers the interior styling and creature comforts you'd normally expect to find in a car, Flareside is one tough truck.

For example, a properly equipped Flareside has an impressive towing capacity of up to 8,600 lbs., including passengers and cargo weight. That's enough muscle to haul your boat, snowmobile, jet skis or camper to your favorite weekend playground.

Unmistakably, Flareside is part of the F-Series truck line — the best built full-size pickup in America.\* And the best-selling, for the 14th straight year.†

\*Based on an average of consumer-reported problems in a survey of all 1991 full-size pickups designed and built in North America. †Based on model year retail deliveries.

Some equipment shown on these pages may be optional.



## SPEND MORE TIME IN THE GREAT INDOORS.

The outside is what first catches your eye about this new full-size Ford pickup. The fresh styling. The luminescent colors.

But the fun doesn't really begin until you spend some time behind the wheel. In the great indoors. It's a liberating experience.

Choose the Regular Cab, or SuperCab with over 30 cubic feet of room to store golf clubs or luggage behind the front seats.

The Regular Cab flight bench seat and SuperCab's optional Captain's Chairs are covered with cloth, helping to keep you cool on hot days and warm on cold ones. They include power lumbar support. A feature you would ordinarily expect only in a car.

The leather-wrapped steering wheel is standard. Along with the voltmeter, oil pressure and temperature gauges. A tach is optional.

The whole interior is intelligently laid out. The overall look is contemporary. Everything you need to operate the truck is within reach. Controls fit the hand and operate easily.

There's a Power Point electrical accessory outlet so you can plug in things like coffee pots during break time. But wait until you hear this.

**"FORD'S AUDIO SETS THE STANDARD FOR THE DOMESTIC MANUFACTURERS WITH THE BEST SOUNDING STEREOS."**

*POPULAR MECHANICS (OCTOBER, '91)*

Flareside's electronic AM/FM stereo with digital clock and optional cassette player features preset memory for twelve FM and six AM stations, seek tuning, Dolby® noise reduction plus front/rear fader control.

Both cabs include four efficient speakers to help your audio system perform the way it's supposed to.

Flareside for 1992. What truck driving is all about.



**"THE F-SERIES' NEW INTERIORS WILL SET THE PACE FOR THE REST OF THE TRUCK WORLD."**

*AUTOMOBILE (OCTOBER, '91)*

*The Flareside interior has a modern, car-like look and feel. The SuperCab, pictured to the left, offers optional cloth Captain's Chairs with power lumbar support, center floor console with cupholders and cloth rear bench seat.*

*The Flareside instrument panel includes a voltmeter, plus oil pressure and temperature gauges. A tach is optional. Critical items like the rotary heater and air conditioning controls are easy to reach. And simple to operate. The leather-wrapped steering wheel is standard.*

*The optional AM/FM stereo with digital clock and cassette player features preset memory for twelve FM and six AM stations, seek tuning, Dolby® noise reduction plus front/rear fader control. Both Regular Cab and SuperCab include four efficient speakers.*

*Controls to operate the optional power windows, power door locks and mirrors are conveniently located next to the driver on the door trim panel.*

*SuperCab features over 30 cubic feet of room in the rear compartment. The cloth bench seat is standard, along with 3-point outboard safety restraints.*

*The Regular Cab includes a removable mini-console. All Flaresides also include an under-hood light, a dome lamp with dual beam map lights, a headlights-on audible alert plus front map pockets.*

*Some equipment shown on these pages may be optional.*



# MORE WAYS THAN 1 TO SAY 4x4.

We just invented one more exciting reason to drive the F-Series 4x4 — the 1992 Ford Flareside.

And because there's more than one way to have off-road fun, you can have your Flareside 4x4 more ways than one.

Choose the SuperCab or the Regular Cab. The XLT or the "Nite" truck.

Automatic locking hubs are standard. And, easy to operate. Simply stop the truck, then shift into 4-wheel drive high. As soon as you drive off, the hubs are automatically locked into the 4x4 mode.

For a first-class upgrade, choose the optional Electric 4x4 Touch Drive.

Electric Touch Drive allows you to shift "on the fly" from 2-wheel drive to 4-wheel high and back again at normal road speeds — at the touch of a button.

The optional manual locking hubs are ideal for the

more traditional off-road enthusiast. A simple quarter turn of each front hub selector is all that's needed to lock the hubs into the 4-wheel drive mode.

Flareside 4x4s include a standard 2-speed transfer case; a 5-speed manual overdrive transmission; a



Shift from 2-wheel drive to 4-wheel high and back again "on the fly" with Electric Touch Drive — at the touch of a button.

tough Twin-Traction Beam front suspension; plus front and rear axles rated at 3,800 pounds.

Notable options include a limited slip front axle for true 4x4 performance and skid plates to help protect the transfer case and fuel tank(s).

## 4x2 SPECIFICATIONS

GVWR (max. lbs.)	5,450 Regular Cab; 6,050 SuperCab
Front axle (max. lbs.)	3,400 Regular Cab; 3,400 SuperCab
Rear axle (max. lbs.)	3,800 Regular Cab; 3,800 SuperCab
Springs: front	Coil
rear	2-stage leaf, variable rate
	Opt. HD front and auxiliary rear springs. See your Ford dealer.
Shock absorbers	Gas-pressurized (HD optional)
Battery	Std. 72 amp/hr; Opt. 84 amp/hr
Alternator	60 amps; 75 amps w/air conditioning or V-8 engine
Engine	Std. 4.9L EFI I-6 (XLT); Std. 5.0L EFI V-8 ("Nite") Opt. 5.0L EFI V-8; 5.8L EFI V-8
Transmission	Std. 5-speed manual O/D Opt. 4-speed manual; 4-speed auto O/D (AOD); 4-speed auto O/D (E4OD)
Fuel capacity	Std. 34.7 gals. Opt. 18.2 gals. Regular Cab
Steering	Power
Brakes	Power front disc and rear drum with rear anti-lock system
Wheels, type/rim size	5-hole/6j
Tires, tubeless	(5) P235/75R x 15XL BSW (XLT) (5) P235/75R x 15XL OWL ("Nite")
	Opt. tires are available to match payload package requirements. See your Ford Dealer.

HD = Heavy Duty.

## PAYLOAD PACKAGE SELECTOR

Regular Cab	Package No.	Payload*	GVWR**	Tires (Min.)
4x2	1	1,000/1,130*	5,000	P235/75R x 15XL
4x2	2	1,450/1,580*	5,450	P235/75R x 15XL
4x4	1	1,945	6,100	P235/75R x 15XL
SuperCab	Package No.	Payload*	GVWR**	Tires (Min.)
4x2	1	1,700	6,050	P235/75R x 15XL
4x4	1	1,690	6,250	P235/75R x 15XL

\*Maximum allowable weight of people, cargo and body equipment in pounds.

\*\*Gross Vehicle Weight Rating in pounds. +With single fuel tank option.



"Tread Lightly" is an educational program designed to increase public awareness of land-use regulations and responsibilities in our nation's wilderness areas. Ford joins the U.S. Bureau of Land Management in encouraging you to help preserve our national forests and other public and private lands by "treading lightly."





#### 4x4 SPECIFICATIONS

GWV (max. lbs.)	6,100 Regular Cab; 6,250 SuperCab
Front axle (max. lbs.)	3,800 Regular Cab; 3,800 SuperCab
Rear axle (max. lbs.)	3,800 Regular Cab; 3,800 SuperCab
Springs: front	Coil
rear	2-stage leaf, variable rate
	Opt. HD front and auxiliary rear springs. See your Ford Dealer.
Shock absorbers	Gas-pressurized (HD optional)
Front hubs	Std. auto locking Opt. manual locking Opt. auto locking with Electronic Touch Drive
Battery	Std. 72 amp-hr.; Opt. 84 amp-hr.
Alternator	60 amps; 75 amps w/air conditioning or V8 engine
Engine	Std. 4.9L EFI I6 (XLT); Std. 5.0L EFI V8 ("Nite") Opt. 5.0L EFI V8; 5.8L EFI V8
Transmission	Std. 5-speed manual O/D Opt. 4-speed manual; 4-speed auto O/D (AOD); 4-speed auto O/D (E4OD)
Fuel capacity	Std. 18.2 gals. Regular Cab 34.7 gals. SuperCab
Steering	Power
Brakes	Power front disc and rear drum with rear anti-lock system
Wheels, type/rim size	5-hole/cj
Tires, tubeless	(5) P235/75R x15XL BSW (XLT) (5) P235/75R x15XL OWL ("Nite") Opt. P265/75R x15XL OWL

Opt. tires are available to match payload package requirements. See your Ford Dealer.

HD = Heavy Duty.

#### EXTERIOR DIMENSIONS

Cab type	WB (in.)	Box IL* (ft.)	IW (in.)	4x2		4x4		OAL*
				LH #	CH #	LH #	CH #	
Regular Cab	117	6-3/4	49	30.2	70.8	33.5	73.7	196.9
SuperCab	139	6-3/4	49	30.7	71.7	33.4	73.9	221

\*Nominal. #Estimated in inches empty; see your Ford Dealer for details. +Without rear bumper; add 4.5" for optional rear step bumper.

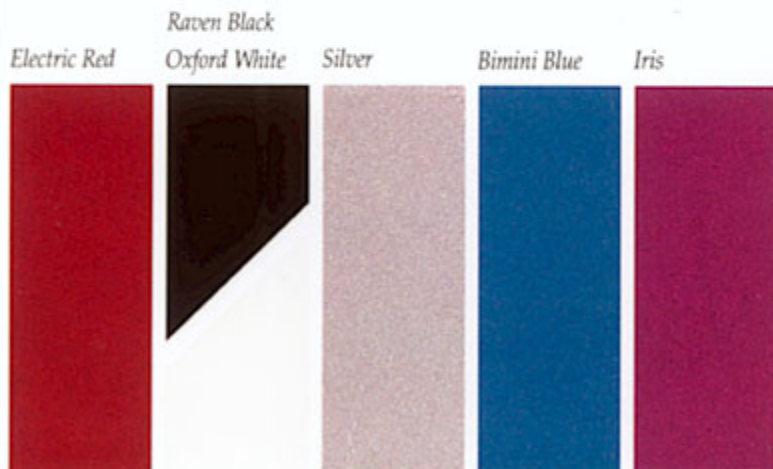
WB = Wheelbase. IL = Inside Length. IW = Inside Width. LH = Load Height. CH = Cab Height. OAL = Overall Length.

#### COLORS AND TRIMS

Exterior Paint Colors	Interior Trim Colors		
	Crystal Blue	Scarlet Red	Dark Clearcoat
<b>Regular Cab and SuperCab</b>			
Electric Red Clearcoat Metallic		■	■
Raven Black*	■	■	■
Oxford White	■	■	■
Silver Clearcoat Metallic	■	■	■
Bimini Blue Clearcoat Metallic	■		
Iris Clearcoat†			■

Note: See your Ford Dealer for the availability of Lower Accent Colors.

\*"Nite" truck only. †Exclusive to Flareside.



GETTING ALL  
DRESSED UP IS  
HALF THE FUN.

Driving a Flareside is only half the fun of owning it. The rest is showing it off.

That's why your truck should be as smartly dressed as you.

At Ford, we made shopping for the right options easy. As well as economical.

Start with the Preferred Equipment Packages listed on the back page of this brochure.

These are groups of popular options which offer savings over the same options if purchased separately.

Then ask your Ford Dealer for a list of accessories like those shown here.\*

They're only a sample of the way you can outfit your Flareside to reflect your personality and unique driving needs.

So, drive your Flareside whenever you can. Show it off as often as you like. Or, simply admire it all by yourself — anytime you want.

Just for fun.



Shown above, from top to bottom: chrome-styled steel wheels; deep-dish aluminum wheels (standard on "Nite" truck); and argent-styled steel wheels.

The nose covers, above left, and bed liner, shown below them, are available through your Ford Dealer.

The rear valence, bottom left, is part of the standard Flareside look. A rear step bumper is optional on the XLT.

\*Some of the items shown on vehicles in this publication are the products of retail organizations and establishments not connected with Ford Motor Company. Availability, price, quality and durability of these items rest solely with those organizations, and Ford assumes no responsibility for their use.



## FLARESIDE PREFERRED EQUIPMENT PACKAGES AND OPTIONS

	Regular Cab			SuperCab		
	XLT 513A	"Nite" 514A	XLT 515A	XLT 533A	"Nite" 534A	XLT 535A
<b>Note:</b> Package content is subject to change. P = Included in Package S = Standard O = Optional						
<b>Seating</b>						
Cloth tight bench (includes power lumbar)	S	S	S			
Cloth bench (includes cloth rear bench on Super Cab)				S	S	S
Knitted vinyl bench (includes vinyl rear bench seat on SuperCab)	O	O	O	O	O	O
Cloth Captain's Chairs (includes floor console, power lumbar and cloth rear bench)				O	O	O
Vinyl rear jump seats				O	O	O
<b>Appearance/Comfort/Convenience</b>						
Air conditioning	O	O	P	O	O	P
Sliding rear window	O	S	O	O	S	O
Flareside rear step bumper	O		O	O		O
Power door locks/windows	O	O	P	O	O	P
Light and Convenience Group (1)	P	P	P	P	P	P
Speed control and tilt steering wheel	O	O	P	O	O	P
Tachometer	O	P	O	O	P	O
Electronic AM/FM stereo with digital clock	S	S	S	S	S	S
Electronic AM/FM stereo with cassette player, digital clock and 4 speakers	O	O	O	O	O	O
Bright electric mirrors	O		O	O		O
"Nite" Model (2)		P			P	
Chrome-styled steel wheels	P		P	P		P
Forged aluminum deep dish wheels	O	S	O	O	S	O
Argent-styled steel wheels	O			O		
Lower accent two-tone paint	O		O	O		O
<b>Powertrains And Equipment</b>						
4.9L EFI I-6 with 5-speed manual overdrive transmission	S		S	S		S
4.9L EFI I-6 with 4-speed manual transmission	O		O	O		O
4.9L EFI I-6 with electronic 4-speed automatic overdrive transmission (E4OD)	O		O	O		O
5.0L EFI V-8 with 5-speed manual overdrive transmission	O	S	O	O	S	O
5.0L EFI V-8 with 4-speed manual transmission	O	O	O	O	O	O
5.0L EFI V-8 with automatic overdrive transmission	O	O	O	O	O	O
5.0L EFI V-8 with electronic 4-speed automatic overdrive transmission (E4OD)	O	O	O	O	O	O
5.8L EFI V-8 with electronic 4-speed automatic overdrive transmission (E4OD)	O	O	O	O	O	O
Manual locking hubs (4x4)	O	O	O	O	O	O
Electric Touch Drive (4x4)	O	O	O	O	O	O
Limited slip front axle (4x4)	O	O	O	O	O	O
Skid plates (4x4)	O	O	O	O	O	O
Single fuel tank	O	O	O	O	O	O
Heavy-duty battery	O	O	O	O	O	O
Super engine cooling	O	O	O	O	O	O
Engine block heater	O	O	O	O	O	O
<b>Handling And Towing</b>						
Handling Package (3)	O	S	O	O	S	O
Trailer Towing Package (4)	O	O	O	O	O	O
Heavy-duty Rear Suspension Package (5)	O	O	O	O	O	O
Optional Payload Package #2 (4x2) (6)	O	O	O			

(1) Includes underhood and dual beam dome/map light; headlights on audible alert and mini-console on the Regular Cab only. (2) See your Ford Dealer for a complete list of standard and optional features. (3) Includes front/rear stabilizer bars; h/d front springs (4x2); h/d shock absorbers; quad front plus h/d rear shock absorbers (Regular Cab 4x4). (4) Includes Handling Package plus: super engine cooling; trailer towing harness; h/d turn signal flasher and h/d battery. (5) Includes h/d front/rear shock absorbers and 400-lb. capacity auxiliary rear springs. (6) Includes 5,450-lb. GWR.

### 6-YEAR/100,000-MILE CORROSION PROTECTION

Corrosion warranty coverage for outer body panel rust-through is 6 years or 100,000 miles, whichever comes first. See your Ford Dealer for a copy of this limited warranty.

### PRODUCT CHANGES

Following publication of this catalog, certain changes in standard equipment, options, prices and the like, or product delays, may have occurred which would not be included in these pages. Your Ford Dealer is your

best source for up-to-date information.

Ford Division reserves the right to change product specifications at any time without incurring obligations.

FDT-024 Litho in U.S.A. 12/91

## MAJOR STANDARD FEATURES

### Exterior

Aero-halogen headlamps with impact resistant lenses  
Tinted glass, all around  
Wraparound front parking/turn signal lamps  
Bright manual mirrors  
Removable tailgate with bright handle  
Wraparound taillamps

### Interior

Color-keyed door trim panels  
Color-keyed cloth headliner  
Instrumentation: voltmeter, oil pressure and temperature gauges w/indicator lights  
Power Point electrical accessory outlet  
Leather-wrapped steering wheel  
Interval wipers

### Functional

Twin-Beam front axle (4x2)  
Twin-Traction-Beam front axle (4x4)  
Maintenance-free battery (72AH 650 C.C.A.)  
Power brakes, w/rear anti-lock  
4.9L EFI I-6 engine (XLT)  
5.0L EFI V-8 engine ("Nite" truck)  
5-speed manual O/D transmission  
Power steering  
Automatic locking front hubs (4x4)  
Gas pressurized shock absorbers  
Two-speed transfer case (4x4)  
Five P235/75R x 15XL BSW All-season tires (XLT)\*  
Five P235/75R x 15XL OWL All-season tires ("Nite" truck)  
Five 6-inch J 5-hole wheels  
2,300-lb. front springs (4x2 Regular Cab)  
2,725-lb. front springs (4x2 SuperCab)  
2,525-lb. front springs (4x4 Regular Cab)  
3,100-lb. front springs (4x4 SuperCab)  
2,688-lb. rear springs (4x2 Regular Cab)  
3,800-lb. rear springs (4x2 SuperCab)  
3,776-lb. rear springs (4x4 Regular Cab)  
3,777-lb. rear springs (4x4 SuperCab)

\*See your Ford Dealer for a complete list of tires.

