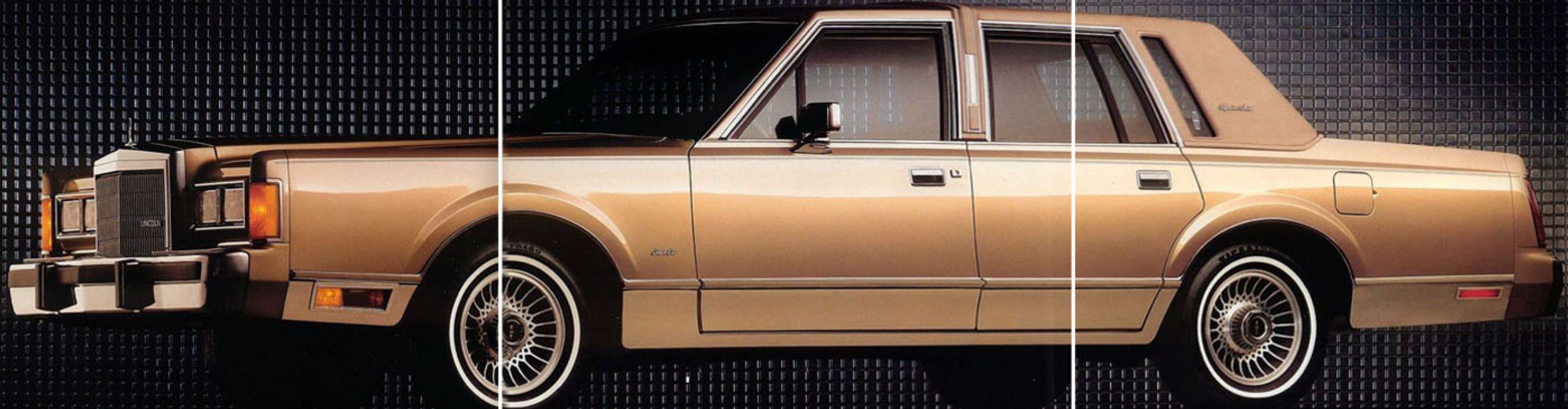


LINCOLN '89  
TOWN CAR




LINCOLN.  
What a luxury car should be.





Town Car Signature Series shown here  
in Sandstone Clearcoat Metallic. Some  
features shown may be optional.  
See feature pages at back of catalog.





**LINCOLN TOWN CAR.  
LUXURY THAT  
NEEDS NO  
INTRODUCTION.**

IT'S UNMISTAKABLE. WHILE SOME LUXURY CARS HAVE FADED FROM PAST GLORIES, LINCOLN TOWN CAR REMAINS UNDIMINISHED. ITS DEDICATION TO STYLE AND COMFORT IS UNCOMPROMISED. ■

THIS ATTITUDE AT LINCOLN IS BASED IN A FIRM COMMITMENT TO BE THE BEST IN CLASS IN EVERY WAY POSSIBLE.

FROM QUALITY AND SERVICE TO CUSTOMER SATISFACTION, LINCOLN IS COMMITTED TO BEING AT THE TOP OF THE LIST. ■


IN THE FOLLOWING PAGES, WE WILL PROVIDE YOU WITH AN INTIMATE LOOK AT THE CRAFTSMANSHIP AND TECHNOLOGY THAT GIVE TOWN CAR ITS SPECIAL APPEAL. WE ENCOURAGE YOU TO EXPLORE THE FINER DETAILS OF TOWN CAR AND EXPERIENCE IT FIRSTHAND AT A LINCOLN DEALER. ONLY THEN CAN YOU FULLY APPRECIATE EVERYTHING THIS UNIQUE LUXURY SEDAN HAS TO OFFER. **LINCOLN TOWN CAR. WHAT A LUXURY CAR SHOULD BE. ■**





The distinctive Signature Series interior shown here is optional. Sandalwood leather offers its unique approach to comfort and luxury. The complete list of features included with the Signature Series is outlined at the back of this catalog. Some features shown here may be optional.





**LOSE YOURSELF  
INSIDE THE MOST  
SPACIOUS INTERIOR  
CRAFTED IN  
AMERICA TODAY.**

**T**HERE IS SIMPLY NO EQUIVALENT. **N**O OTHER AUTOMOBILE IN AMERICA TODAY HAS AS MUCH INTERIOR ROOM AS THE LINCOLN TOWN CAR. ■

**U**P TO 45 INCHES OF FRONT LEGROOM IN WHICH TO STRETCH OUT. **A** MINIMUM OF 42 INCHES OF REAR LEGROOM. **A**ND OVER FIVE FEET OF FRONT AND REAR SHOULDER ROOM. **T**HOSE NUMBERS ADD UP TO SOMETHING THAT IS INCREASINGLY HARD TO FIND IN MOST AUTOMOBILES. **G**ENUINE COMFORT FOR SIX ADULTS. **A**ND THOSE SIX WON'T HAVE TO SCRIMP ON THE LUGGAGE THEY BRING ALONG. **W**ITH 20.5 CUBIC FEET OF SPACE, TOWN CAR'S TRUNK IS ONE OF THE LARGEST IN AMERICA. ■

#### **AN INTERIOR ENGINEERED FOR COMFORT**

**T**OWN CAR'S INTERIOR IS AN APPEALING ENVIRONMENT. **D**RIVER AND FRONT-SEAT PASSENGER ARE CRADLED IN SUPPORTIVE 50/50 TWIN COMFORT LOUNGE SEATS WITH ADJUSTABLE HEADRESTS. **T**HE DRIVER'S SEAT HAS SIX-WAY POWER ADJUSTMENTS. **A**RMRESTS AT EACH DOOR ARE SUPPLEMENTED BY FRONT AND REAR CENTER FOLD-DOWN ARMRESTS. **S**TANDARD COMFORT AND CONVENIENCE APPOINTMENTS ABOUND: POWER WINDOWS, DOOR LOCKS AND OUTSIDE MIRRORS; FINGERTIP SPEED CONTROL; TILT STEERING WHEEL; INTERVAL WIPERS; COURTESY LIGHTS; AND AUTOMATIC CLIMATE CONTROL, TO MENTION A FEW. ■

**T**OWN CAR'S HOOD, ROOF AND DOORS ARE LINED WITH A GENEROUS AMOUNT OF SOUND INSULATION TO CREATE A COMFORTABLE ENVIRONMENT INSIDE. **I**N ADDITION, RUBBER BODY MOUNTS HELP ISOLATE THE INTERIOR FROM ROAD NOISE. ■

#### **MUSIC FROM THE SUBLIME TO THE SPECTACULAR**

**L**INCOLN TOWN CAR COMES WITH AN AM/FM STEREO CASSETTE SOUND SYSTEM THAT SUPPLIES A REMARKABLE LISTENING EXPERIENCE. **B**UT EVEN ITS FIDELITY CAN BE TOPPED WITH THE SPECTACULAR FORD JBL AUDIO SYSTEM OPTION. **I**T INCLUDES A 140-WATT AMPLIFIER AND 12 PREMIUM SPEAKERS WHICH HAVE BEEN SPECIALLY DESIGNED AND STRATEGICALLY LOCATED THROUGHOUT THE INTERIOR. ■

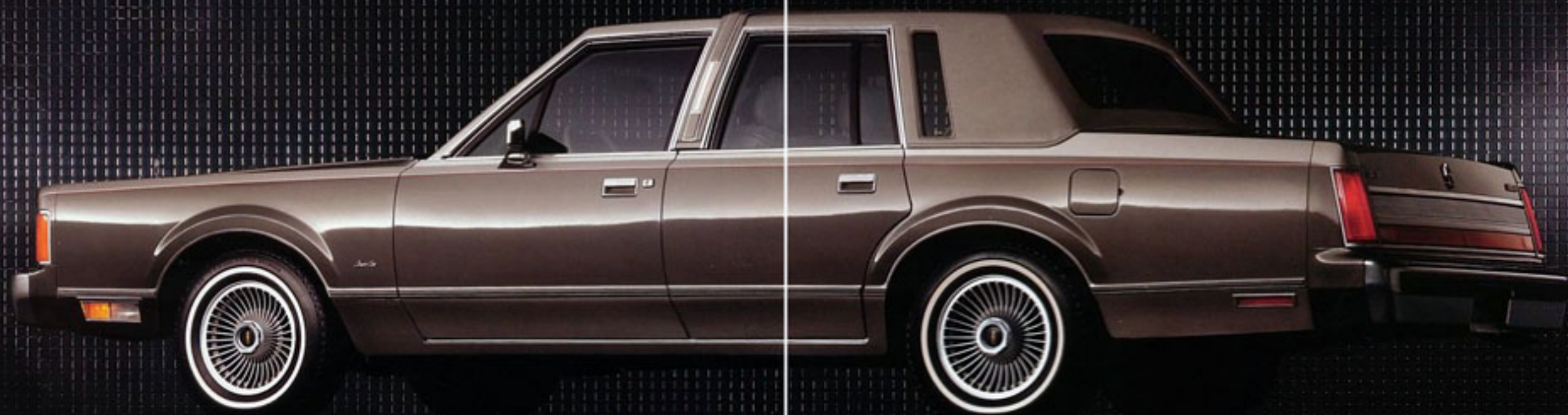
#### **EVEN A DISC PLAYER OPTION**

**T**OPPING OFF THE LIST OF MUSIC CHOICES IS A COMPACT DISC PLAYER WHICH CAN BE ADDED TO THE FORD JBL AUDIO SYSTEM. **I**T FEATURES AUTOMATIC SEARCH, SCAN AND DUAL REPEAT. ■



Town Car in Midnight Red Clearcoat Metallic.  
Some features shown may be optional.  
See feature pages at back of catalog.





Lincoln Town Car in Silver Frost Clearcoat Metallic over Pewter Clearcoat Metallic. Some features shown may be optional. See feature pages at back of catalog.





## TOWN CAR WITH THE TOUCH OF A MASTER JEWELER

THIS IS TOWN CAR AS ONLY CARTIER COULD ENVISION. A ONE-OF-A-KIND AUTOMOBILE BEARING THE NAME OF ONE OF THE WORLD'S RENOWNED JEWELRY AND WATCH MAKERS. ■

THE CARTIER SERIES IS CLOAKED IN AN ELEGANT DUAL-SHADE PAINT TREATMENT—SILVER FROST CLEARCOAT METALLIC OVER PEWTER CLEARCOAT METALLIC—AND TOPPED WITH AN ELEGANT SILVER FROST COACH ROOE. STRIKING MAROON ACCENT STRIPES RUN THE LENGTH OF THE CAR WHILE DISTINCTIVE TURBINE SPOKE ALUMINUM WHEELS COMPLEMENT THE EXTERIOR PAINT SCHEME. ■

THE CARTIER APPROACH CONTINUES, WITH TOUCHES BOTH AESTHETIC AND FUNCTIONAL. LUXURIOUS CLOTH AND LEATHER OR AN ALL-LEATHER SEAT TRIM IS STANDARD, ALONG WITH A LEATHER-WRAPPED STEERING WHEEL. SIX-WAY POWER DRIVER AND PASSENGER SEATS. AN ILLUMINATED KEYLESS ENTRY SYSTEM OPERATES BOTH THE DOORS AND THE TRUNK. HIGH BEAMS THAT AUTOMATICALLY DIM WITH ONCOMING TRAFFIC. A POWER DECKLID PULLDOWN. EVEN FRONT FLOOR MATS BEARING THE CARTIER LOGO. ■

### A "SILENT COPILOT"

A USEFUL OPTION ON ALL TOWN CAR MODELS IS THE ELECTRONIC MESSAGE CENTER. IT CAN PROVIDE YOU WITH SUCH VALUABLE INFORMATION AS DISTANCE TO EMPTY, AVERAGE FUEL ECONOMY, INSTANTANEOUS FUEL ECONOMY, AVERAGE SPEED, DISTANCE TRAVELED, DISTANCE TO DESTINATION, ELAPSED TIME AND ESTIMATED TIME OF ARRIVAL. IT ALSO HAS A CLOCK AND A CONDITION CHECK-OUT FEATURE. AT THE TOUCH OF A BUTTON IT CHECKS THE FOLLOWING 11 CONDITIONS: DOOR AJAR, TRUNK AJAR, CHARGE SYSTEM, OIL PRESSURE, ENGINE TEMPERATURE, MILES TO EMPTY, WASHER FLUID, BRAKE PRESSURE, HEADLAMPS, TAILLAMPS AND BRAKELAMPS. ■

Cartier Town Car interior in Titanium cloth and leather. Some features shown may be optional. See feature pages at back of catalog.







# ENGINEERED TO CREATE AN AUTOMOBILE OF DISTINCTION AND SUBSTANCE.

TOWN CAR TRAVELS THE ROAD WITH A SPECIAL ELEGANCE AND DIGNITY, THE RESULT OF NOT JUST ITS DISTINCTIVE APPEARANCE BUT ALSO OF ITS ENGINEERING. ■

ITS SUBSTANTIAL 117-INCH WHEELBASE, BODY-ON-FRAME CONSTRUCTION AND NITROGEN GAS-PRESSURIZED SHOCKS YIELD THE LIQUID-SMOOTH RIDE

THAT HAS BECOME THE TOWN CAR'S TRADEMARK. ■

AND LIKE THE RIDE ITSELF, SMOOTH IS AN APT DESCRIPTION OF TOWN CAR'S POWERTRAIN—A POWERFUL 5.0-LITER V-8 AND FOUR-SPEED AUTOMATIC OVERDRIVE TRANSMISSION, EEC-IV, ONE OF THE WORLD'S MOST ADVANCED ELECTRONIC ENGINE CONTROL SYSTEMS, AND PRECISE SEQUENTIAL MULTI-PORT ELECTRONIC FUEL INJECTION HELP OPTIMIZE BOTH ENGINE POWER AND OPERATING EFFICIENCY.\* ■

## SAFETY THAT'S BUILT IN

TOWN CAR'S BODY INCORPORATES A NUMBER OF DESIGN ELEMENTS THAT CAN HELP PROTECT ITS OCCUPANTS. ROOF AND FRONT PILLARS ARE BUILT TO MEET A STATIC FORCE TEST EQUAL TO 5,000 POUNDS OR 1-1/2 TIMES TOWN CAR'S WEIGHT. AND EACH DOOR CONTAINS A HIGH-STRENGTH STEEL BEAM. IN ADDITION, ALL TOWN CARS ARE EQUIPPED WITH FIVE-MPH BUMPERS FRONT AND REAR. ■

## ENJOY ACCESS WITHOUT A KEY

TOWN CAR'S OPTIONAL KEYLESS ENTRY SYSTEM ADDS A DEGREE OF CONVENIENCE AND DISTINCTION FEW CAN MATCH. FIVE CALCULATOR-STYLE BUTTONS ABOVE THE DRIVER'S OUTSIDE DOOR HANDLE ALLOW YOU TO OPEN ALL DOORS, THE TRUNK, AND LOCK THE ENTIRE CAR AGAIN. YOU CAN EVEN PROGRAM THE SYSTEM TO OPERATE ON ANY FIVE-DIGIT CODE YOU WISH. IT COULD BE YOUR BIRTHDAY OR ANNIVERSARY DATE SO YOU NEVER HAVE TO WORRY ABOUT FORGETTING IT. ■

## THE ADDED SECURITY OF A FACTORY ALARM SYSTEM

TOWN CAR EVEN OFFERS THE ADDED SECURITY OF A FULLY INTEGRATED FACTORY-INSTALLED ALARM SYSTEM. IT IS AVAILABLE ONLY WITH THE KEYLESS ENTRY SYSTEM OPTION. WHEN SOMEONE TRIES TO ENTER THE LOCKED CAR BY NOT USING THE KEY OR KEYLESS CODE, THE SYSTEM AUTOMATICALLY DISABLES THE STARTER, FLASHES THE LIGHTS AND BLASTS THE HORN FOR TWO TO FOUR MINUTES. THE STARTER REMAINS INOPERABLE UNTIL THE PROPER KEY IS WORKED IN THE DOOR. ■



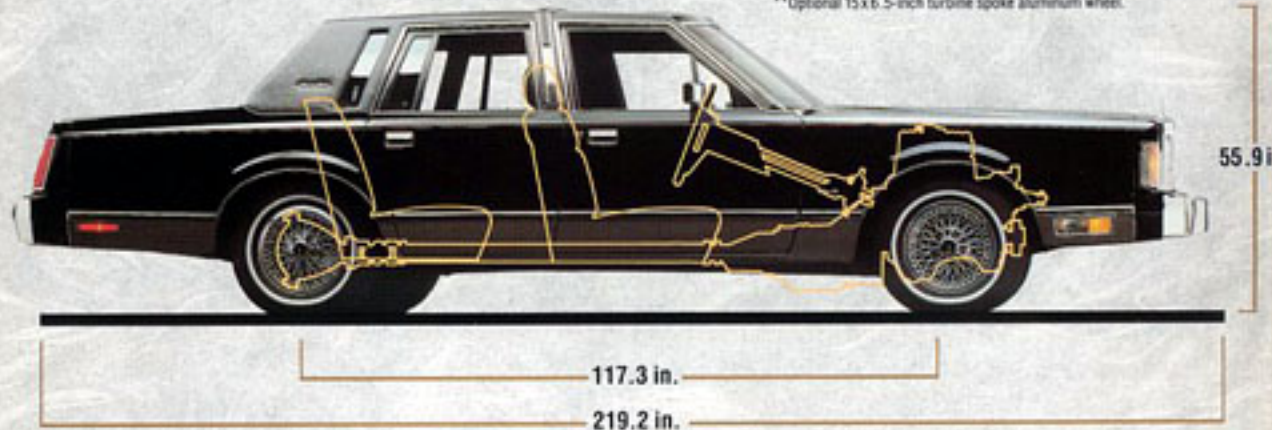
1989 LINCOLN  
TOWN CAR  
SPECIFICATIONS

Vehicle type: six-passenger, four-door sedan

<b>DIMENSIONS:</b>	Wheelbase (in.)	117.3
	Track (in.)	front 62.2 rear 62.0
	Length (in.)	219.2
	Width (in.)	78.1
	Height (in.)	55.9
	Curb weight (lb.)	4044
	Fuel capacity (gal.)	18.0
	Luggage space (cu. ft.)	20.3
<b>ACCOMMODATIONS:</b>	Headroom (in.)	front 39.0 rear 38.2
	Legroom (in.)	front 43.5 rear 42.1
	Hiproom (in.)	front 56.5 rear 57.8
	Shoulder room (in.)	front 60.7 rear 60.7
	<b>ENGINE:</b>	Layout
Type		V-8 with EEC-IV computer
Displacement (liters/cu. in.)		5.0/302
Bore & stroke (mm/in.)		101.6x76.2/4.0x3.0
Compression ratio		8.9:1
Horsepower @ rpm (SAE net)		150 @ 3200*
Torque @ rpm (lb.-ft. SAE net)		270 @ 2000*
Fuel delivery		sequential multi-port electronic fuel injection
Fuel requirement		87 octane (minimum) unleaded (anti-knock index)
<b>DRIVETRAIN:</b>		Transmission type
	Gear ratios: I	2.40
	II	1.47
	III	1.00
	IV	0.67
	axle ratio	(std.) 3.08:1; (Sig., Cartier) 3.27:1 (trailer tow) 3.55:1
<b>CHASSIS:</b>	Body	body-on-frame perimeter
	Suspension front	independent S.L.A. coil-spring design with ball joints and stabilizer bar
	rear	four-bar link, coil spring on axle
	shock absorbers	nitrogen gas-pressurized
	Steering type	power recirculating ball
	Overall ratio	16.4:1
	Turns, lock to lock	3.4
	Turning circle, curb to curb (ft.)	40.0
	Brakes front	11.0-inch power-assisted disc
	rear	10.0-inch power-assisted drum (11.0-inch with trailer tow)
	Wheels	15x6.0-inch steel**
	Tires	P215/70R15 WSW steel-belted radials

Information based on MVMA specifications.

\*Dual exhaust 160 HP @ 3400 and 280 lb.-ft. @ 2200.  
\*\*Optional 15x6.5-inch turbine spoke aluminum wheel.





S Standard features O Optional features N/A Not available

	TOWN CAR	SIGNATURE	CARTIER
<b>FUNCTIONAL FEATURES</b>			
5.0-liter V-8 engine (150 hp @ 3200 rpm)	S	S	S
Sequential multi-port electronic fuel injection	S	S	S
Electronic engine controls (EEC-IV)	S	S	S
Four-speed automatic overdrive transmission	S	S	S
Power steering	S	S	S
Power front disc/rear drum brakes	S	S	S
Nitrogen gas-pressurized shock absorbers	S	S	S
Engine temperature gauge	S	S	S
Traction-Lok axle	O	O	O
Trailer Tow Package (Class III)	O	O	O
Automatic load-leveling suspension	O	O	O
Conventional full-size spare tire	S	S	S
Maintenance-free battery	S	S	S
<b>INTERIOR/CONVENIENCE FEATURES</b>			
Comfort/Convenience Group	O	S	S
Six-way power front passenger seat, power decklid pulldown, dual illuminated visor vanity mirrors, rear floor mats and headlamp convenience system (includes automatic headlamp dimmer and Autolamp on/off/delay system)			
50/50 twin comfort lounge seats	S	S	S
Six-way power driver's seat	S	S	S
Driver and passenger manual recliners	S	S	S
Articulated front seat headrests	S	S	S
Cloth seat trim	S	S	N/A
Leather seat trim	O	O	N/A
Leather and cloth seat trim	N/A	N/A	S
Leather seat trim (no cost option)	N/A	N/A	O
Front seatback robe cords and map pockets	N/A	S	S
Front- and rear-seat fold-down center armrests	S	S	S
AM/FM stereo electronic cassette radio/Premium Sound	S	S	S
Twelve-speaker Ford JBL Audio System with 140-watt amplifier	O	O	O
Compact disc player (requires Ford JBL Audio System)	O	O	O
Power antenna	S	S	S
Electronic instrumentation	O	O	O
Message center with digital readouts	O	O	O
Power glass moonroof	O	O	O
Anti-theft alarm system (requires keyless entry system)	O	O	O
Automatic-dim day/night rearview mirror	O	O	O
Power windows, vents and door locks	S	S	S
Fingertip speed control	S	S	S
Tilt steering column	S	S	S
Automatic climate control	S	S	S
Tinted glass	S	S	S
Rear window defroster	S	S	S
Remote-control trunk release	S	S	S
Automatic parking brake release	S	S	S



Full wheel covers

Wire-style wheel covers

Turbine-spoke  
aluminum wheelsLacy-spoke  
aluminum wheelsWire-spoke  
aluminum wheels

See chart for availability.



	TOWN CAR	SIGNATURE	CARTIER		
Interval wipers	S	S	S		
Dual beam map/dome light	S	S	S		
Courtesy lights and integral reflectors on front doors	S	S	S		
Roof rail assist handles at each door	S	S	S		
Four-spoke, color-keyed luxury steering wheel	S	S	S		
Leather-wrapped steering wheel	0	0	S		
Trip odometer	S	S	S		
30-ounce floor carpeting	S	S	S		
Front floor mats	S	S	S		
Day/night inside rearview mirror	S	S	S		
Visor vanity mirror on passenger side only	S	N/A	N/A		
Dual illuminated visor vanity mirrors	0	S	S		
<b>EXTERIOR FEATURES</b>					
Quad-rectangular halogen headlamps	S	S	S		
Cornering lamps and coach lamps	S	S	S		
Full vinyl roof with frenched rear window	S	N/A	N/A		
Luxury half-vinyl coach roof with frenched rear window	0	S	S		
Full carriage roof	0	0	N/A		
Illuminated/keyless entry system	0	S	S		
Single key entry ignition	S	S	S		
Power fold-away heated mirrors	S	S	S		
Illuminated thermometer in left-hand mirror	S	S	S		
Extensive corrosion protection	S	S	S		
Bodyside accent stripes	N/A	N/A	S		
Hood and bodyside accent stripes	S	S	N/A		
Premium bodyside moldings	S	S	S		
Bright rocker panel moldings	S	N/A	N/A		
Flush bright bumpers with front bumper guards	S	S	S		
Front and rear rub strips	S	S	S		
Wide, bright lower bodyside molding	N/A	S	S		
Bodyside protection molding	0	0	0		
Dual-Shade paint	N/A	N/A	S		
<b>TIRES/WHEELS</b>					
P215/70R15 WSW steel-belted radial tires	S	S	S		
Full wheel covers	S	N/A	N/A		
Wire-style wheel covers	0	0	0		
Turbine-spoke aluminum wheels	0	S	S		
Lacy-spoke aluminum wheels	0	0	0		
Wire-spoke aluminum wheels	0	0	0		
<b>INTERIOR COLORS</b>					
<b>Standard on Town Car and Signature</b>					
Titanium	Shadow Blue	Currant Red	Cinnabar	Raven Black	Sandalwood
Oxford White/Titanium (leather only)		Oxford White/Currant Red (leather only)			
Oxford White/Shadow Blue (leather only)					
<b>Standard on Cartier</b>					
Titanium					



The sun, moon and stars are yours with Town Car's optional power moon roof. Shown here open, partially closed and with sliding sun/shade panel extended.



**VINYL ROOF COLORS****Standard on Town Car and Signature**

Cinnabar	Light Sandalwood	Silver Frost	Medium Driftwood	Twilight Blue	Light Crystal Blue
Pastel Adobe	Midnight Black	Arctic White	Bright Currant Red	Midnight Red	

**Standard on Cartier**

Silver Frost

**CAMBRIA CLOTH CARRIAGE ROOF****Optional on Town Car and Signature**

Midnight Black	Dark Blue	Dark Currant Red
----------------	-----------	------------------

**BAYVILLE VINYL CARRIAGE ROOF****Optional on Town Car and Signature**

Arctic White	Light Sandalwood	Dark Taupe
--------------	------------------	------------

**EXTERIOR COLORS**

Silver Frost Clearcoat Metallic



Sandstone Clearcoat Metallic



Midnight Black Clearcoat



Twilight Blue Clearcoat Metallic



Bright Currant Red Clearcoat Metallic



Rose Quartz Clearcoat Metallic



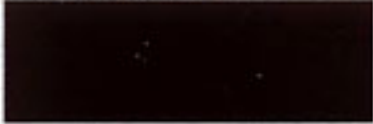
Light Crystal Blue Clearcoat Metallic



Pastel Adobe Clearcoat



Dark Titanium Clearcoat Metallic



Midnight Red Clearcoat Metallic



Cinnabar Clearcoat Metallic



Arctic White



Medium Driftwood Clearcoat Metallic

**EXCLUSIVE ON CARTIER**  
Silver Frost Clearcoat Metallic/  
Pewter Clearcoat Metallic

## Regarding this catalog...

Specifications and descriptions used were in effect when this publication was approved for printing. Lincoln-Mercury Division reserves the right to discontinue options at any time, or change specifications, equipment or designs without notice and without incurring obligation. ■ Standard and optional features listed are subject to change. Some features described are optional at extra cost. Some options are required in combination with other options. Availability of some features may be subject to a slight delay. ■ Refer to the Town Car owner's manual for specific service requirements and added operations related to severe service applications. ■ 1989 EPA estimates were not available at publishing time. Town Car, however, should earn good mileage figures in the new EPA Gas Mileage Guide. See your dealer for the latest figures.



## OUR COMMITMENT BEGINS BEFORE YOU'VE DRIVEN MILE ONE, AND LASTS CONSIDERABLY LONGER.

**COMMITMENT.** More than a promise, this is a program with one solid objective: to ensure *customer satisfaction*. ■ A program coordinator has been appointed in every Lincoln-Mercury dealership to make sure Lincoln owners receive special treatment. ■ In addition, there are 29 Lincoln Owner Relations Managers, one in each Ford Parts and Service Division Office. Should an individual dealer be unable to resolve your concern, help can be obtained at that level. ■ The National Lincoln Commitment Coordinator ensures priority handling of Lincoln-related owner inquiries. ■ **A TOLL-FREE NUMBER TO CALL.** Should the need ever arise, you can be in direct communication with the Lincoln Program Coordinator at Ford Parts and Service Division Headquarters in Dearborn, Michigan. When you take delivery of your new Town Car, we



provide you with a special hot line number that ensures prompt attention. It's in operation from 9 a.m. to 5 p.m. EST, Monday through Friday, except holidays. ■ Additional coverage on certain selected components of your new Town Car is available at a cost so low it could pay for itself the first time it is needed. Ask your dealer for complete details on the *Ford Extended Service Plan*. ■ Participating Lincoln-Mercury dealers offer to guarantee their service work on your Town Car for as long as you own it. This Lifetime Service Guarantee means that *you pay for a covered repair only once*. If it ever has to be fixed again, the repair is free at a Lincoln-Mercury dealer. Free parts. Free labor. And it



doesn't matter where the car was purchased. ■ Ask your dealer to show you a copy of this limited warranty. ■ **FORD-PAID REPAIR PROGRAMS AFTER THE WARRANTY PERIOD.** Sometimes Ford Motor Company offers adjustment programs to pay all or part of the cost of certain repairs. These programs are intended to assist owners and are in addition to the warranty or to required recalls. ■ **TECHNICAL SERVICE BULLETINS.** All vehicles need repairs during their lifetime. Ford issues Technical Service Bulletins (TSBs) and easy-to-read explanations describing unusual engine or transmission conditions which may lead to costly repairs. They also describe the recommended repairs and give new repair procedures. Often a repair now can prevent a more serious repair later. ■ Ask Ford Motor Company or your Lincoln-Mercury dealer about Ford-paid repair programs and TSBs relating to your Town Car. ■ To get copies of materials for your Lincoln or the vehicle of interest to you, call Ford toll-free at 1-800-241-3673. ■ In Alaska or Hawaii, call 1-800-241-3711. ■ In Georgia, call 1-800-282-0959. ■ You can also write to Ford Customer Information Service, Post Office Box 95427, Atlanta, GA 30347. Please include your name, address, vehicle make, model and year, engine and transmission type. ■ **IS LEASING FOR YOU?** There may be considerable advantages in leasing a new Town Car. Leasing can free up your capital and may reduce your monthly cash outlay. If the car is used for business, record-keeping may be simplified. Your Lincoln-Mercury Dealer Leasing Association member can help design a lease program that is exactly right for you. ■ Buckle up—together we can save lives.

**A DEDICATION TO QUALITY.** All Lincoln cars are built at one plant—the Wixom Assembly Plant near Detroit, Michigan. Producing Lincolns is this plant's sole job. Here, Quality is Job 1. ■ **QUALITY PROTECTION.** All Lincolns are covered by a limited major component warranty for 6 years or 60,000 miles. A deductible and some restrictions apply. Ask to see a copy of this warranty at your Lincoln-Mercury dealer. You're further protected by a limited corrosion perforation warranty for 6 years or 100,000 miles. There is no deductible. Some restrictions apply. ■ **THE LINCOLN**

LINCOLN. What a luxury car should be.



