

1987 Ford F-Series Pickup



FORD F-SERIES PICKUP FOR 1987

**BEST-BUILT AMERICAN TRUCKS
SIX YEARS RUNNING**

"Quality is Job 1." In fact, for the past six consecutive years, Ford quality has led all other American automotive companies. This is based on an average of owner-reported problems in the first three months of service on '86 models, and in a six-month period on '81-'85 models designed and built in North America.

A NEW SHAPE OF TOUGH

The life of a pickup is rough. It has to be able to stand up to hard work, rugged terrain, and the elements. And on top of all that, it has to be good looking and stylish. That's a lot to ask from one vehicle. But Ford Pickups have been doing it for years. That's why they're America's best-sellers.*

There's a lot to look forward to in the 1987 Ford F-Series Pickup. Bold new styling. Electronic fuel injection, rear antilock brakes, and more. All designed to help keep America's truck at the head of the class.

*Based on cumulative calendar year retail deliveries for the last 10 years.



Regular Cab Styleside Pickup (below) has room for three adults. The Flareside (above) adds fender flares and running boards for a sporty look.





SuperCab Styleside Pickup comes with a standard rear bench seat. It's the perfect size for a family of six.



Crew Cab Styleside Pickup gives room for a crew of six, four doors and two full-width bench seats.

CONTENTS

Ford F-Series Interior	4-5
Ford XLT Lariat	6
Ford XL	7
Ford Custom.....	8
Ford SuperCab.....	9
Ford Crew Cab	10
Ford Chassis Cabs	11
Ford F-Series: The Technical Side	12-13
Serviceability/Trailer Towing	14-15
Specifications, Payloads, Dimensions	16-17
Preferred Equipment Packages	18-19
Options and Colors.....	20-21
Safety and Owner Benefits	22-23

Below: F-150 XL Styleside 4x4 in Dark Shadow Blue Metallic/Colonial White.

Some equipment shown on these pages may be optional. See options list on pages 20-21.



1987 Ford F-Series Pickup



A COMFORTABLE WORKING ENVIRONMENT

You spend a lot of time behind the wheel of your pickup so it has to be comfortable. But it has to be functional as well. All the controls need to be at your fingertips. Instruments need to be placed where you can see them at a glance. And you should be able to equip it with the kinds of options that make owning it more enjoyable.

COMFORT YOU CAN LIVE WITH

The wide bench seat in the F-Series is built for firm yet comfortable support. And it gives uncrowded room for three passengers. In XLT Lariat Regular Cab models there's a fold-down center armrest with built-in cup depressions. SuperCab models provide room for a family of six with the standard rear bench seat. And the 4-door Crew Cab offers outstanding room and comfort for up to six passengers with its two full-size bench seats.

NEWLY STYLED INSTRUMENT PANEL

The new style of the 1987 instrument panel has a curved, driver-biased shape that positions the speedometer in the center, where you get an unobstructed view through the steering wheel.

A full complement of gauges for oil pressure, engine coolant temperature, ammeter and fuel are also standard. They are all backlit with lit pointers for excellent night readability.

You'll notice a new indicator light in the F-Series instrument panel, too. It's one that you won't find on any other pickup manufactured in America. It's for the standard rear antilock brake system. The system contributes to smooth, sure stops by inhibiting rear wheel lock-up under most operating conditions.

The center section of the panel, within easy reach of driver and front seat passengers,

contains the climate control and entertainment systems. The heater/defroster system is a high output design with a 3-speed blower, four instrument registers and side window demisters. A new AM radio with integral digital clock and dual door-mounted speakers (may be deleted for credit) is standard.

ENJOYABLE OPTIONS

To help you and a front passenger relax as you drive, buckle-up in the comfort of dual Captain's Chairs, a popular option in SuperCab models. They're cloth trimmed with reclining seat backs and folding inboard armrests. The seat backs feature a zippered storage pouch and two external pockets. A center console is also included that has a large locking compartment and twin cup depressions.

For your listening pleasure, order the electronic AM/FM stereo search radio with cassette tape player and Dolby® noise reduction.

Loads of other options are also available—like air conditioning, tilt steering wheel, speed control, and more. For a complete listing, see the options list on pages 20-21.

Right: XLT Lariat interior in Regatta Blue.

Left: Captain's Chair in Regatta Blue.

Below: XLT Lariat instrument panel.

Some equipment shown on these pages may be optional. See options list on pages 20-21.







FORD XLT LARIAT

**TOP-OF-THE-LINE
IN LOOKS AND COMFORT**

XLT Lariat's bold, dynamic design is accentuated with a smooth, chrome front bumper and rub strip. There are bright low mount swingaway mirrors. A lower bodyside protection molding and bright wheelip moldings are all standard as are the sport wheel covers.

Inside, the XLT Lariat is the most plush of all the F-Series models. The '87 front bench seat is all cloth with high outboard seat backs on Regular Cab models. In the center is a folding center armrest with integral beverage container

depressions. Full color-keyed carpeting is standard. Door trim panels have a map pocket and a recessed storage bin under the armrest. Safety belts are deluxe color-keyed with a comfort regulator feature (except Crew Cab). The headliner and sun visors are color-keyed cloth. The left visor has an elastic retention band. On the right visor there's a removable visor mirror. And the steering wheel is wrapped in soft leather.

Above: F-150 XLT Lariat Styleside 4x2 in Bright Canyon Red/Colonial White.

Right: XLT Lariat interior in Canyon Red.

Some equipment shown on these pages may be optional. See options list on pages 20-21.





FORD XL

A POPULAR INTERMEDIATE TRIM LEVEL

The XL trim level's popularity can be attributed to its blend of stylish appearance, comfort, and easy-care interior. For example, the floor mat is rugged, easy-to-clean vinyl and has a thick insulating pad underneath. And it's color-keyed, adding to the comfortable appeal of the rest of the interior. On SuperCabs with the 6.9 liter diesel engine, the floor covering is color-keyed carpeting.

The wide bench seat has cloth seating surfaces for comfort. The door panels likewise are color-

keyed, easy-care vinyl with map pockets on the lower half. The headliner is color-keyed cloth adding to the warm, completely tailored look of the interior. And the instrument panel is accented with woodtone appliques.

On the outside, there are bright, low mount swingaway mirrors and bright wheelip moldings (Styleside) to go along with dual accent bodyside paint stripes that add the perfect finishing touch.

Above: F-150 XL Styleside 4x4 in Dark Grey Metallic/Raven Black.

Right: XL interior in Medium Grey.





FORD CUSTOM

**THE STANDARD OF VALUE
FOR ALL FORD PICKUPS**

One look at this tough pickup and you realize it's built to take on most any rugged work situation.

The front bumper is all chrome and all business. The large, aero-style headlights have thick, impact-resistant plastic lenses and the halogen bulbs can be easily replaced from under the hood using no tools and no realignment is necessary. A black grille and black foldaway mirrors add to the all-business appearance of this working pickup.

Inside is an all-vinyl (knitted vinyl in SuperCab) bench seat with full foam padding. Safety belts are color-keyed and feature a comfort regulator that allows you to adjust the tension of the shoulder harness. The door panels are also easy-to-clean vinyl and color-keyed. The floor mat is tough vinyl with a thick insulating pad underneath. The all-new instrument panel features black appliques around a cluster that includes gauges for oil pressure, coolant temperature and amps. And the electronic AM radio with digital clock is standard (may be deleted for credit).

If you have a tough job to do, this is the pickup you'll want to do it in.

Above: F-250 Custom Styleside 4x2 in Dark Canyon Red.



Above: Custom interior in Canyon Red.



FORD SUPERCAB

**A GREAT LOOKING PICKUP
WITH SEATING FOR SIX**

The big Ford SuperCab is spacious enough inside for a family of six with its standard rear bench seat. And when the kids aren't in the back, fold down the seat back and you have a flat load area for tools or toys (golf clubs, fishing gear, you name it). You can also order optional center facing jump seats for the rear that fold up out of the way leaving space for over 29 cubic feet of cargo.

You can order your SuperCab in any of the three F-Series trim levels, Custom, XL or XLT Lariat.



Top: F-150 XLT Lariat SuperCab in Desert Tan Metallic/Light Chestnut.

Above and right: XLT Lariat SuperCab interior with optional Captain's Chairs in Chestnut.

Some equipment shown on these pages may be optional. See options list on pages 20-21.





FORD CREW CAB

FULL-SIZE VERSATILITY

Comfortable room for six adults, four doors for easy entry and exit, your choice of single or dual rear wheels, the availability of XLT Lariat trim, and gasoline or diesel power, make this extra roomy F-Series pickup a standout.

Two full-width, full foam bench seats provide riding comfort for your crew. All door windows roll down or, order the convenience of optional power door locks/front windows. Bright low mount swingaway mirrors and auxiliary fuel tank are among the many standard features.



Above: XLT Lariat Crew Cab interior in Regatta Blue.
Top: F-350 XLT Lariat Crew Cab in Dark Shadow Blue Metallic/Colonial White.



FORD CHASSIS CABS

DESIGNED FOR CUSTOM BODIES

Ford F-Series Chassis Cabs are designed to be versatile so they can easily accommodate your custom body. And they're built-Ford-tough to handle your job-tough requirements.

Chassis Cabs are offered in 4x4 and 4x2 models with GVWRs up to 11,000 pounds. And they can handle custom bodies up to 12 feet long. Ford's famous Twin-I-Beam independent front suspension is standard on 4x2 Chassis Cabs.

For complete details, ask your Ford Dealer for a 1987 Chassis Cab catalog.

Above: F-350 Chassis Cab in Colonial White.

Right: F-Series stake body in Bright Canyon Red.

Some equipment shown on these pages may be optional. See options list on pages 20-21.





FORD F-SERIES: THE TECHNICAL SIDE

THE BUSINESS END OF AMERICA'S BEST-SELLING PICKUPS*

A commitment to engineering excellence is one of the reasons why Ford has been first in total truck sales for the past 17 years.* And it is that commitment that helped reshape the '87 F-Series pickup to make it perform even better than before.

SOPHISTICATED NEW REAR ANTILOCK BRAKE SYSTEM

Advancements in computerized brake technology are at work in the new Ford F-Series Pickups to help you come to a straight stop when travelling in the 2-wheel drive mode.

The new electronically controlled rear antilock brake system is designed to inhibit complete rear wheel lock-up under most operating conditions.

Anytime rear wheel lock-up is detected, the computer processes signals and directs the pressure control valve to modulate rear brake line hydraulic pressure. The result is more controlled rear braking performance. Each time the ignition is turned on, a warning light check and a complete computer self-check are made. The computer continuously checks for any possible electrical malfunction. Should the system ever fail to operate, the warning light on the instrument panel will alert the driver that the computer has automatically shut down the system and converted the rear brakes to conventional non-antilock operation.

MULTIPLE-PORT EFI

The high-cube 4.9 liter 6-cylinder, the base engine for most F-Series pickups, is the biggest six available in a full-size pickup. And now, it includes the advantages of multiple port electronic fuel injection.

The addition of EFI results in increased horsepower and torque over 1986, plus other significant advantages. Multiple-port EFI eliminates the need for a carburetor and provides individual injectors at each cylinder intake valve

*Based on total cumulative registrations from 1969 through May, 1986.

Left: F-150 XL Styleside 4x4 in Dark Shadow Blue Metallic/Colonial White.

for precise fuel metering. Principal benefits include improved overall operation, smooth running and easier starting in temperature extremes.

POWERFUL ENGINES

The 5.0 liter V-8, the most powerful small V-8 in a full-size pickup, also offers you the advantages of multiple port EFI plus the added performance that's ideal for trailer towing and other applications that require the excellent balance and power of a V-8 engine.

The 5.8 liter High Output V-8 engine provides outstanding true-truck performance. It features a big free-breathing 4-barrel Holley carburetor and a special low back-pressure exhaust system. It's an excellent choice for handling trailers up to 9,200 pounds.

The 7.5 liter gas V-8 is the biggest engine available in a full-size pickup. It gives you the optimum in big V-8 performance for trailer towing, big campers and rugged commercial uses.

DIESEL POWER, TOO!

The 6.9 liter diesel V-8 is available in the F-250 HD and F-350 Series pickups. With its 170 horsepower rating (150-hp for high altitude areas), it is the biggest and most powerful diesel engine offered in a full-size pickup.

ADVANCED SUSPENSION DESIGNS

Notable advancements incorporated into the F-Series suspensions for 1987 are the use of gas-pressurized shock absorbers for a smooth ride and adjustable caster and camber for accurate alignment. Proper alignment, of course, contributes to ride quality and reduced tire wear.

The rugged Twin-I-Beam independent front suspension on 4x2's provides each front wheel with its own solid forged I-beam axle and big coil spring to step over bumps and through potholes independently. The F-150 Twin-I-Beam includes lubed-for-life ball joints.

Ford 4x4's put the driving force on the road and still give you a smooth ride with Twin-Traction-Beam independent front suspension (monobeam front axle on F-350 models). In off-road situations, Twin-Traction Beam allows each wheel to step over bumps independently for a smooth ride and good off-road control.

FOR POWER AND PERFORMANCE, FORD KEEPS ON COMING

Whatever your trucking needs, commercial, recreational, or both, Ford has a truck that will fit your needs. And more than likely, the Ford truck of your choice will be one of America's favorite trucks—because it's built Ford tough.

Some equipment shown on these pages may be optional. See options list on pages 20-21.



Above: Twin-Traction Beam independent front suspension. (Some items painted for display purposes.)

FORD SERVICEABILITY

A lot of changes have taken place in the '87 F-Series as you have seen. The most visible being the aerodynamic front end sheet metal. Still, even more changes are the ones you can't see but will learn to appreciate the longer you own your new F-Series. These are the changes that are designed to make the F-Series pickup more serviceable than ever before. A few of those changes are listed here.

AERODYNAMIC HEADLIGHTS

This air-efficient assembly not only improves looks and aerodynamics, but is also easier to service than conventional sealed beam lights. The outside lense is thick, impact-resistant plastic. The halogen bulb is quickly and easily replaced from under the hood without tools and without affecting headlight alignment.

AUTOMATIC BELT TENSIONING

The 4.9L and 5.0L engines incorporate a new serpentine belt that provides a number of benefits. There's only one belt to remove and replace should something go wrong. An idler pulley has been added that makes the belt self-tensioning—belt adjustment is totally eliminated. Because there's only one belt you have improved accessibility to front mounted engine components.

FRONT WHEEL CASTER AND CAMBER ADJUSTMENT

Wheel alignment in a working vehicle is particularly important because of the unusual loading conditions encountered. For '87, all F-Series pickups, 4x2 and 4x4 (except mono-beam front axle) feature adjustable caster and camber. And the new design of the front suspension components allows a major savings in alignment time.

BRAKE MASTER CYLINDER

The new brake fluid reservoir is made of see-through plastic with a screw on cap so it is easy to check and easy to fill.

WINDSHIELD WASHER RESERVOIR

The washer fluid reservoir has an increased capacity over last year—up to 80 ounces total. And the filler mouth has been widened for easy top off.

WIDENING THE GAP BETWEEN THE COMPETITION

Many more improvements were made, too. From major redesign of the tailgate operation to making it easier to get at and replace a fuse. By themselves they might appear to be small and insignificant, but collectively, they add up to an outstanding pickup.

TRAILER TOWING

NO ONE OUTPULLS FORD

Ford pickups have the largest rated trailer towing capacity in the industry, bar none. Pickup GCWRs go as high as 14,000 pounds with optional high-torque 6.9 liter diesel, and all the way up to 18,500 pounds with the big-cube 7.5 liter gas V-8!

If you have an intermediate size trailer, the F-250 4x2 (under 8,500-lb. GVWR) with 5.8 liter High Output V-8 and recommended trailer towing equipment is rated to handle GCWRs up to 13,500 pounds.

Both 4x2 and 4x4 pickups offer a complete Trailer Towing/Camping Package that provides all the basic ingredients for recreational or work towing. Consult your Ford Dealer for all the details concerning specific equipment requirements and restrictions.

TRAILER/TOWING CAMPER PACKAGE

This package includes:

- Front and rear stabilizer bars*
- Heavy duty front springs
- Heavy duty front and rear shock absorbers
- Quad front and heavy duty rear shock absorbers on F-150 Regular Cab 4x4 models
- 72 amp/hour maintenance-free battery with 650 cold cranking amps (with 5.8L engine)
- Bright low mount swingaway mirrors on Custom trim Regular Cab single rear wheel Styleside models
- 7-wire trailer towing wiring harness
- Heavy-duty flasher
- Super engine cooling
- Engine oil cooler and electric fuel pump (with the 7.5 liter 4V engine)
- Auxiliary transmission oil cooler with automatic transmissions

*Heavy duty rear springs replace the stabilizer bars on F-250 HD 4x4 pickups with the 6.9 liter diesel in combination with Super Engine Cooling or air conditioning and F-350 with 133-in. wheelbase.

Some equipment shown on these pages may be optional. See options list on pages 20-21.





F-SERIES SPECIFICATIONS

4x2

Equipment	F-150		F-250	F-250 HD		F-350 Reg Cab	F-350 Crew Cab	
	Reg Cab	SuperCab	Reg Cab	Reg Cab	SuperCab	DRW	SRW	DRW
Max. GVWR (lb.)	6,100	6,250	7,700	8,600	8,800	10,000	9,200	10,000
Axle, front (max. rating lb.)	3,400	3,400	3,900	4,000	4,000	4,000	4,000	4,000
Axle, rear (max. rating lb.)	3,800	3,800	5,300	6,250	6,250	7,400	6,250	7,400
Brakes, power	Std.	Std.	Std.	Std.	Std.	Std.	Std.	Std.
Clutch (hydraulic actuation) Dia.	10"	10"	10"	11"	11"	11"	11"	11"
Electrical: battery (amp-hr)	Std. 54	54	54	54	54	54	54	54
	Opt. 72	72	72	72	72	72	72	72
Alternator (amp.)	60	60	60	60	60	60	60	60
Engine (displ.)	Std. 4.9L EFI I-6	4.9L EFI I-6	4.9L EFI I-6	4.9L EFI I-6 ⁽¹⁾	4.9L EFI I-6 ⁽¹⁾	5.8L HO V-8 ⁽¹⁾	5.8L HO V-8 ⁽¹⁾	5.8L HO V-8 ⁽¹⁾
	Opt. 5.0L EFI V-8	5.0L EFI V-8	5.0L EFI V-8	5.8L HO V-8 ⁽¹⁾	5.8L HO V-8 ⁽¹⁾	7.5L V-8	7.5L V-8	7.5L V-8
	5.8L HO V-8 ⁽¹⁾	5.8L HO V-8 ⁽¹⁾	5.8L HO V-8 ⁽¹⁾	7.5L V-8	7.5L V-8	6.9L V-8 Diesel	6.9L V-8 Diesel	6.9L V-8 Diesel
				6.9L V-8 Diesel	6.9L V-8 Diesel			
Fuel tank capacity (gal.)								
SWB	Std. 16.5	35.5	—	—	—	—	—	—
LWB	Std. 19.0	38.0	19.0	19.0	38.0	38.0	38.0	38.0
Auxiliary tank								
SWB	Opt. 19.0	—	—	—	—	—	—	—
LWB	Opt. 19.0	—	19.0	19.0	—	—	—	—
Shock absorbers								
Gas-pressurized, front and rear	Std.	Std.	Std.	Std.	Std.	—	—	—
HD front and rear	Opt.	Opt.	Opt.	Opt.	Opt.	Std.	Std.	Std.
Springs: Front	Coil	Coil	Coil	Coil	Coil	Coil	Coil	Coil
Rear	1-stage	2-stage	2-stage	2-stage	2-stage	2-stage	2-stage	2-stage
Steering	Power	Power	Power	Power	Power	Power	Power	Power
Transmission	Std. 4-spd. manual overdrive	4-spd. manual overdrive	4-spd. manual	4-spd. manual	4-spd. manual	4-spd. manual	4-spd. manual	4-spd. manual
	Opt. SelectShift auto AOD	4-spd. manual SelectShift auto AOD	SelectShift auto AOD	SelectShift auto	SelectShift auto	SelectShift auto	SelectShift auto	SelectShift auto
Wheels: type/rim size	Std. 5-hole, 6 JK (5)	5-hole, 6 JK (5)	8-hole, 6 K (4)	8-hole, 6 K (4)	8-hole, 6 K (4)	8-hole, 6 K (4)	8-hole, 6 K (4)	8-hole, 6 K (6)
Tires: tubeless	Std. P215/75R 15SL	P235/75R 15XL	LT215/85R 16C	LT235/85R 16E	LT235/85R 16E	LT215/85R 16D	LT235/85R 16E	LT215/85R 16D
	Opt. Tubeless tires are available to match payload package requirements. Consult your Ford Dealer for adequate tires.							

EFI = Electronic Fuel Injection HO = High Output HD = Heavy Duty DRW = Dual Rear Wheels (1) NA in California

4x4

Equipment	F-150		F-250	F-250 HD		F-350 Reg Cab	F-350 Crew Cab
	Reg Cab	SuperCab	Reg Cab	Reg Cab	SuperCab	SRW	SRW
Max. GVWR (lb.)	6,250	6,250	6,600	8,600	8,800	9,000	9,200
Axle, front (max. rating lb.)	3,550	3,550	3,850	3,850	4,600	5,000	5,000
Axle, rear (max. rating lb.)	3,800	3,800	5,300	6,250	6,250	6,250	6,250
Brakes, power	Std.	Std.	Std.	Std.	Std.	Std.	Std.
Clutch (hydraulic actuation) Dia.	10"	10"	10"	11"	11"	11"	11"
Electrical: battery (amp-hr)	Std. 54	54	54	54	54	54	54
	Opt. 72	72	72	72	72	72	72
Alternator (amp.)	60	60	60	60	60	60	60
Engine (displ.)	Std. 4.9L EFI I-6	4.9L EFI I-6	4.9L EFI I-6	5.8L HO V-8 ⁽¹⁾	5.8L HO V-8 ⁽¹⁾	5.8L HO V-8 ⁽¹⁾	5.8L HO V-8 ⁽¹⁾
	Opt. 5.0L EFI V-8	5.0L EFI V-8	5.0L EFI V-8	5.8L HO V-8 ⁽¹⁾	5.8L HO V-8 ⁽¹⁾	7.5L V-8	7.5L V-8
	5.8L HO V-8 ⁽¹⁾	5.8L HO V-8 ⁽¹⁾	5.8L HO V-8 ⁽¹⁾	7.5L V-8	7.5L V-8	6.9L V-8 Diesel	6.9L V-8 Diesel
				6.9L V-8 Diesel	6.9L V-8 Diesel		
Fuel tank capacity (gal.)							
SWB	Std. 16.5	—	—	—	—	—	—
LWB	Std. 19.0	38.0	19.0	19.0	38.0	38.0	38.0
Aux. tank capacity (gal.)							
SWB	Opt. 19.0	—	—	—	—	—	—
LWB	Opt. 19.0	—	19.0	19.0	—	19.0	—
Hubs: free-running, manual locking	Std.	Std.	Std.	Std.	Std.	Std.	Std.
Auto-locking	Opt.	Opt.	—	—	—	—	—
Shock absorbers							
Gas-pressurized, front and rear	Std.	Std.	Std.	Std.	Std.	—	—
HD front and rear	Opt.	Opt.	Opt.	Opt.	Opt.	Std.	Std.
Springs: Front	Std. Coil	Coil	Tapered leaf, Constant rate	Tapered leaf, Constant rate	Tapered leaf, Constant rate	Tapered leaf, Constant rate	Tapered leaf, Constant rate
Rear	Std. 2-stage leaf, variable rate	2-stage leaf, variable rate	2-stage leaf, variable rate	2-stage leaf, variable rate	2-stage leaf, variable rate	2-stage leaf, variable rate	2-stage leaf, variable rate
	Opt. Heavy-duty front and auxiliary rear springs for many models. See your Ford Dealer.						
Steering	Power	Power	Power	Power	Power	Power	Power
Transmission	Std. 4-spd. manual	4-spd. manual	4-spd. manual	4-spd. manual	4-spd. manual	4-spd. manual	4-spd. manual
	Opt. 4-spd. manual overdrive SelectShift auto AOD	SelectShift auto AOD	SelectShift auto AOD	SelectShift auto	SelectShift auto	SelectShift auto	SelectShift auto
Wheels: type/rim size	Std. 5-hole, 6 JK (5)	5-hole, 6 JK (5)	8-hole, 6 K (4)	8-hole, 6 K (4)	8-hole, 6 K (4)	8-hole, 6 K (4)	8-hole, 6 K (4)
Tires: tubeless	Std. P235/75R 15XL	P235/75R 15XL	LT215/85R 16C	LT235/85R 16E	LT235/85R 16E	LT235/85R 16E	LT235/85R 16E
	Opt. Tubeless tires are available to match payload package requirements. Consult your Ford Dealer for adequate tires.						

EFI = Electronic Fuel Injection HO = High Output HD = Heavy Duty DRW = Dual Rear Wheels (1) NA in California



F-SERIES PAYLOADS & DIMENSIONS

4x2

Pickup Box Length*	Series	Payload Pkg. No.	Payload**	GVWR	Tires
Regular Cab Pickups					
6½-ft. Flareside	F-150	1	1,300 lb.	4,800 lb.	P215/75R-15SL
6¾-ft. Styleside	F-150	1	1,325 lb.	4,800 lb.	P215/75R-15SL
6½-ft. Flareside	F-150	2	1,715 lb.	5,250 lb.	P215/75R-15SL +
6¾-ft. Styleside	F-150	2	1,740 lb.	5,250 lb.	P215/75R-15SL +
8-ft. Styleside	F-150	1	1,315 lb.	4,900 lb.	P215/75R-15SL
8-ft. Styleside	F-150	2	1,830 lb.	5,450 lb.	P215/75R-15SL +
8-ft. Styleside	F-150	3	2,585 lb.	6,250 lb.	P235/75R-15XL +
8-ft. Styleside	F-250	1	2,485 lb.	6,400 lb.	LT215/85R-16C
8-ft. Styleside	F-250	2	3,725 lb.	7,700 lb.	LT235/85R-16D +
8-ft. Styleside	F-250HD	1X	4,490 lb.	8,600 lb.	LT235/85R-16E
Dual Rear Wheel	F-350	1	5,450 lb.	10,000 lb.	LT215/85R-16D(DR)
SuperCab Pickups					
6¾-ft. Styleside	F-150	1	1,980 lb.	6,050 lb.	P235/75R-15XL
8-ft. Styleside	F-150	1	2,075 lb.	6,250 lb.	P235/75R-15XL
8-ft. Styleside	F-250HD	1X	4,135 lb.	8,800 lb.	LT235/85R-16E
Crew Cab Pickups					
8-ft. Styleside	F-350	1	4,195 lb.	9,200 lb.	LT235/85R-16E
8-ft. Styleside	F-350	1	4,795 lb.	10,000 lb.	LT215/85R-16D(DR)

*Nominal **Maximum allowable weight of people, cargo, body and equipment + Required option Note: Consult your Ford Dealer or Chassis-Cab catalog for Chassis-Cab information.

4x4

Pickup Box Length*	Series	Payload Pkg. No.	Payload**	GVWR	Tires
Regular Cab Pickups					
6½-ft. Flareside	F-150	1	2,200 lb.	6,100 lb.	P235/75R-15XL
6¾-ft. Styleside	F-150	1	2,220 lb.	6,100 lb.	P235/75R-15XL
8-ft. Styleside	F-150	1	2,275 lb.	6,250 lb.	P235/75R-15XL
8-ft. Styleside	F-250	1	2,350 lb.	6,600 lb.	LT215/85R-16C
8-ft. Styleside	F-250HD	1	4,120 lb.	8,600 lb.	LT235/85R-16E
8-ft. Styleside	F-350	1	4,320 lb.	9,000 lb.	LT235/85R-16E
SuperCab Pickups					
8-ft. Styleside	F-150	1	1,750 lb.	6,250 lb.	P235/75R-15XL
8-ft. Styleside	F-250HD	1	3,660 lb.	8,800 lb.	LT235/85R-16E
Crew Cab Pickups					
8-ft. Styleside	F-350	1	3,825 lb.	9,200 lb.	LT235/85R-16E

*Nominal **Maximum allowable weight of people, cargo, body and equipment

EXTERIOR DIMENSIONS

Cab Type	Series	WB (in.)	Box IL* (ft.)	IW max. Width (in.)	(4x2)		(4x4)		OAL (in.)†
					LH (in.)**	CH (in.)**	LH (in.)**	CH (in.)**	
STYLESIDE PICKUP									
Regular	F-150	116.8	6¾	70	30.2	69.8	33.3	73.8	194.1
	F-150	133	8	70	29.2	69.9	32.8	73.2	210.2
	F-250	133	8	70	32.5	73.0	34.2	75.7	210.2
	F-250HD	133	8	70	34.4	74.4	36.3	76.7	210.2
	F-350 DR††	133	8	70	33.0	73.4	38.6	78.5	210.2
SuperCab	F-150	138.8	6¾	70	31.4	72.1	—	—	216.1
	F-150	155	8	70	31.3	71.9	33.2	74.0	232.2
	F-250 HD	155	8	70	34.2	74.6	36.0	77.0	232.2
Crew Cab	F-350	168.4	8	70	34.1	74.6	35.6	78.3	245.7
	F-350 DR	168.4	8	70	32.9	74.1	—	—	245.7
FLARESIDE PICKUP									
Regular	F-150	116.8	6½	54	30.2	69.8	33.3	73.8	193.6

*Nominal **Estimated empty. See your Ford Dealer for details. †Without rear bumper. Add 4.3" for opt. argent step bumper, 4.5" for opt. bright step bumper. Add 2.2" for channel bumper. ††Dual rear wheels not included with 4x4 model.

F-SERIES TRIM CONTENT

The preceding pages gave you a look at the various F-Series trim level highlights. In the chart below, detailed trim level differences are shown so that you can easily check the features and upgrades as you move up from Custom to XL to XLT Lariat.

	Custom	XL ⁽¹⁾	XLT Lariat
● = Standard ■ = Optional			
Exterior			
Chrome front bumper	●	●	●
Grille	Black	Black	Chrome
Bright headlight/parking lights bezel	—	—	●
Bright hub caps	●	●	—
Sport wheel covers	■	■	●
Mirrors, black foldaway	●	—	—
Mirrors, bright low mount swingaway	■	●	●
Front bumper rub strip	—	●	●
Bright wheelip molding	—	● ⁽²⁾	● ⁽²⁾
Dual accent bodyside paint stripes	—	● ⁽²⁾	—
Lower bodyside protection molding	—	—	● ⁽²⁾
Brushed aluminum tailgate applique	—	—	●
Tinted glass	■	■	●
Bright rear window moldings	—	●	●
Interior			
Floor mat, rubber with insulation	Black	Color-keyed	—
Carpeting, color-keyed with insulation	—	—	●
Door trim panel, color-keyed	●	with map pocket	with map pocket cloth insert and additional storage compartment under armrest
Instrument panel, color-keyed	with black appliques	with woodtone appliques	with woodtone appliques
Front bench seat	Vinyl	Cloth/vinyl	Cloth
Safety belts with comfort regulator	Black	Color-keyed	Color-keyed
Electronic AM radio with dual speakers and digital clock (may be deleted for credit)	●	●	●
Sun visors, color-keyed	Vinyl	Vinyl	cloth with LH elastic retention band and RH visor mirror
Headliner, color-keyed cloth	—	●	●
Steering wheel	Black	Black	Leather-wrapped

(1) Styleside only. (2) Styleside only. Deleted with Roof/Rocker Two-Tone.



PREFERRED EQUIPMENT PACKAGES

AN EASY WAY TO BUY

The **F-150 Styleside (XLT Lariat)** pictured at left illustrates the high level of standard equipment in this series. Included is Preferred Equipment Package 507A, with the kinds of features that have proved popular with many truck buyers.

F-150 STYLESIDE (WITH PREFERRED EQUIPMENT PACKAGE 507A):

- Minimum cost payload package
 - Minimum rear axle
 - Minimum BSW tires
 - Heavy-duty battery (72AH)
 - Auxiliary fuel tank
 - Convenience Group
 - Light Group
 - Electronic AM/FM stereo radio with clock
 - Speed control/tilt steering wheel
 - XLT Lariat trim
 - Air conditioning
 - Power door locks/windows
 - Sliding rear window
- Plus the following standard features:**
- 4.9L EFI I-6 engine
 - Power steering
 - Power front disc/rear drum brakes
 - 16.5 gallon fuel tank (short wheelbase)
 - 19.0 gallon fuel tank (long wheelbase)
 - 4-speed manual transmission with overdrive (4x2)
 - Twin-I-Beam independent front suspension (4x2)
 - Color-keyed door trim panels
 - Chrome grille
 - Ammeter, temperature and oil pressure gauges
 - Aero-style halogen headlights
 - Chrome front bumper with black rub strip
 - Sport wheel covers
 - Bright low-mount swingaway mirrors
 - Tinted glass

Preferred Equipment Packages are groups of popular features. By combining them into groups, we simplify the ordering procedure. All you have to do is: (1) Choose your series (F-150, F-250, or F-350) and cab style (Regular, SuperCab or Crew Cab). (2) Choose your trim level (Custom, XL or XLT Lariat). (3) Select the Preferred Equipment Package from the chart below that includes the features you want.

For instance, if you decide on an F-150 Regular Cab XLT Lariat, you can choose to have it equipped with one of three Preferred Equipment Packages numbered 505A, 506A and 507A. Package 505A is the standard XLT trim, which by itself is a well-equipped utility vehicle (see page 6). Package 507A adds a

group of options which includes: Heavy-duty battery; Auxiliary fuel tank; Convenience Group; Light Group; Air conditioning; Power door locks/windows; Speed control/tilt steering wheel and more.

At this point, if you would like to further personalize your new F-Series pickup, refer to page 21, find the Preferred Equipment Package number under XLT trim, and select from the options listed under it.

Left: F-150 XLT Lariat Styleside shown in Raven Black/Medium Silver Metallic.

Some equipment shown on these pages may be optional. See options list on pages 20-21.

F-150 REGULAR CAB STYLESIDE (4x2, 4x4)	PREFERRED EQUIPMENT PACKAGES							
	Custom			XL		XLT Lariat		
	500A	501A	502A	503A	504A	505A	506A	507A
Minimum cost payload package	•	•	•	•	•	•	•	•
Minimum axle	•	•	•	•	•	•	•	•
Minimum BSW tires (P215/75Rx15SL)	•	•	•	•	•	•	•	•
Custom trim	•	•	•					
Heavy-duty battery (72 AH)		•	•		•		•	•
Auxiliary fuel tank		•	•		•		•	•
Tinted glass		•	•		•	•	•	•
Bright low mount swingaway mirrors		•	•	•	•	•	•	•
Convenience Group ⁽¹⁾		•	•		•		•	•
Chrome grille			•		•	•	•	•
Headliner and insulation package			•	•	•	•	•	•
Light Group ⁽²⁾			•		•		•	•
Electronic AM/FM stereo with clock			•		•	•	•	•
Speed control/tilt steering wheel			•		•		•	•
Sport wheel covers			•		•	•	•	•
XL trim				•	•			
XLT Lariat trim						•	•	•
Air conditioning							•	•
Power door locks/windows								•
Sliding rear window								•

⁽¹⁾ Includes headlights "on" reminder buzzer; Interval windshield wipers; RH visor mirror; Map pocket on door-trim panel; Passenger side door courtesy light switch. ⁽²⁾ Includes lights for glove box, engine compartment, cargo box; Under-instrument panel courtesy lights; Passenger side door courtesy light switch; Dual beam dome/map light; Headlights "on" reminder buzzer.

1987 Ford F-Series Pickup



PERSONALIZED OPTIONS

Once you've chosen the model and Preferred Equipment Package you desire, you may want to add optional equipment. A sample is given on page 21 for the F-150 Regular Cab Styleside. Find your Preferred Equipment Package number, then choose from the options listed under it.

Options and their availability are subject to change during the year. Some options may be subject to ordering restrictions. Your Ford Dealer can give you complete details.

Following are descriptions of selected options which may be of particular interest to you.

ELECTRONIC AM/FM STEREO RADIO WITH CASSETTE TAPE PLAYER

This electronic radio includes many features. Some of these features are: digital clock; preset memory for six AM stations and 12 FM stations; seek tuning up or down the scale; manual tuning. The cassette player also includes Dolby® noise reduction.

TILT STEERING WHEEL AND SPEED CONTROL

The tilt wheel adjusts to the most comfortable position, makes entry and exit easy. Speed controls are within easy reach on the steering wheel and include a convenient "resume" feature that lets you return to the previously set speed at the touch of a button.



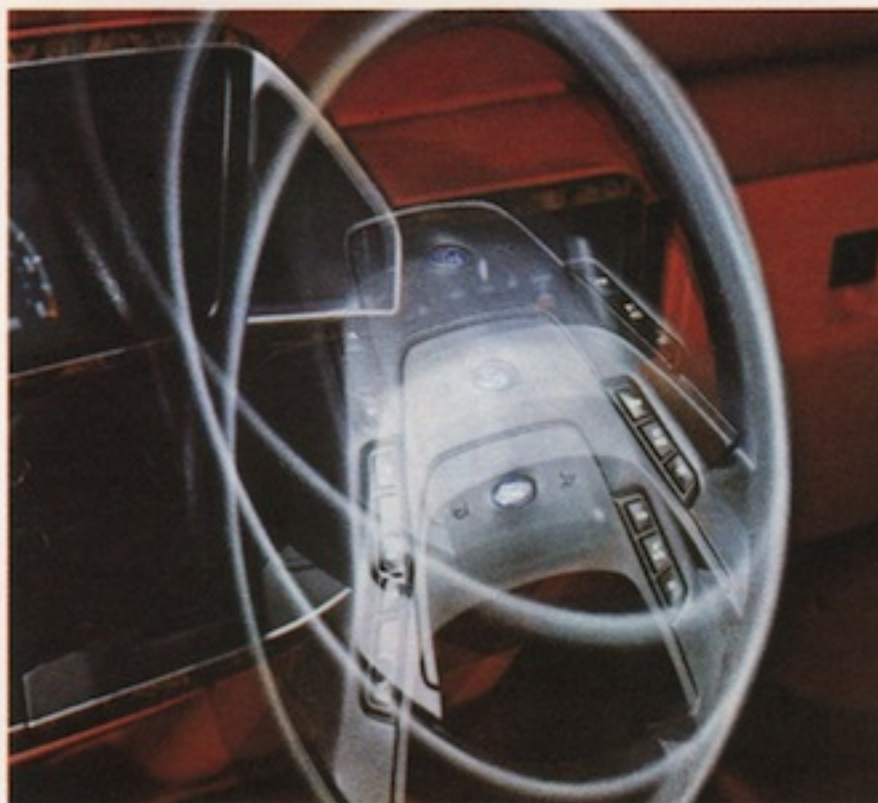
Deluxe argent styled steel wheels Sport wheel covers



Power door locks and windows



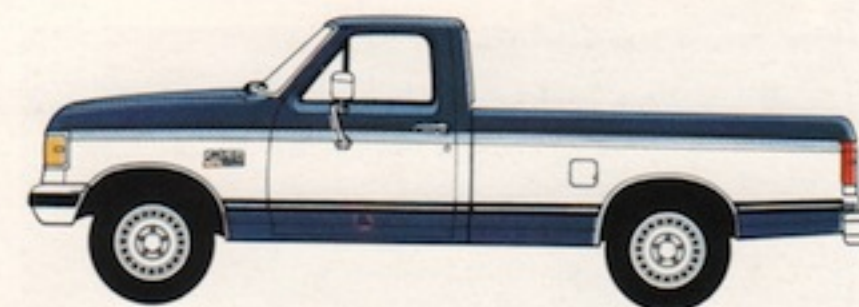
Electronic AM/FM stereo search radio with cassette tape player and digital clock



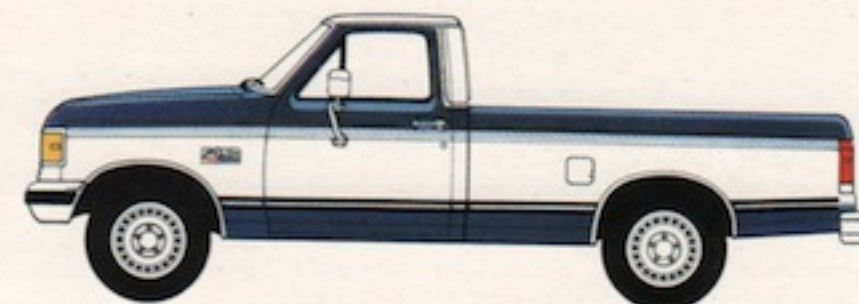
Tilt steering wheel/speed control

TWO-TONES

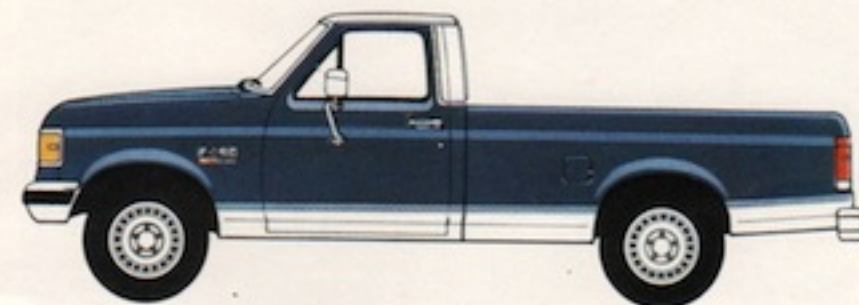
Deluxe Two-Tone — includes accent color on the center bodyside area and tailgate, two-color tape stripe on mid-bodyside and upper/lower tailgate, lower bodyside/wheelip moldings at paint break, two-color tape at paint break on Flareside and DRW models, deletes dual bodyside accent paint stripes with XL trim.



Combination Two-Tone — includes Deluxe Two-Tone combined with roof two-tone.



Roof/Rocker Two-Tone — includes accent color on roof and lower bodyside, two-color tape at lower paint break, deletes lower bodyside and wheelip moldings with XLT Lariat trim and dual accent paint stripes and wheelip moldings on XL trim.



■ Body Color □ Accent Color

■ = Optional ● = Included in equipment package (see pages 16-17 for additional standard features)

PREFERRED EQUIPMENT PACKAGES

F-150 REGULAR CAB STYLESIDE (4x2, 4x4)	Custom			XL		XLT		
	500A	501A	502A	503A	504A	505A	506A	507A
Cloth and vinyl bench seat	■	■	■	●	●			
Knitted vinyl bench seat	■	■	■	■	■	■	■	■
Air conditioning	■	■	■	■	■	■	●	●
Heavy-duty battery (72 AH)	■	●	●	■	●	■	●	●
Roof clearance lights	■	■	■	■	■	■	■	■
Convenience Group ⁽¹⁾	■	●	●	■	●	■	●	●
Super engine cooling	■	■	■	■	■	■	■	■
Power door locks/windows				■	■	■	■	●
Auxiliary fuel tank	■	●	●	■	●	■	●	●
Tinted glass (windshield)	■	●	●	■	●	●	●	●
Chrome grille	■	■	●	■	●	●	●	●
Handling Package ⁽²⁾	■	■	■	■	■	■	■	■
Headliner and insulation package	■	■	●	●	●	●	●	●
Engine block heater	■	■	■	■	■	■	■	■
Automatic locking hubs (4x4)	■	■	■	■	■	■	■	■
Light Group ⁽³⁾	■	■	●	■	●	■	●	●
Bright low-mount swingaway mirrors	■	●	●	●	●	●	●	●
Bright swingout recreational mirrors	■	■	■	■	■	■	■	■
Lower bodyside and wheelip moldings	■	■	■	■	■	●	●	●
Combination Two-Tone paint	■	■	■	■	■	■	■	■
Deluxe Two-Tone paint	■	■	■	■	■	■	■	■
Roof/Rocker Two-Tone	■	■	■	■	■	■	■	■
Heavy-duty front/rear shock absorbers	■	■	■	■	■	■	■	■
Skid plates (4x4)	■	■	■	■	■	■	■	■
Tilt steering wheel/speed control	■	■	●	■	●	■	●	●
Heavy-duty Front Suspension Package (4x4) ⁽²⁾	■	■	■	■	■	■	■	■
Heavy-duty Rear Suspension Package ⁽²⁾	■	■	■	■	■	■	■	■
Tachometer	■	■	■	■	■	■	■	■
Trailer Towing/Camper Package (See page 14)	■	■	■	■	■	■	■	■
Deluxe argent styled steel wheels	■	■	■	■	■	■	■	■
Sport wheel covers	■	■	●	■	●	●	●	●
Sliding rear window	■	■	■	■	■	■	■	●
Electronic AM/FM stereo radio	■	■	●	■	●	●	●	●
Electronic AM/FM stereo with cassette tape player	■	■	■	■	■	■	■	■
Radio credit option	■	■		■				
Argent rear step bumper	■	■	■	■	■	■	■	■
Chrome rear step bumper	■	■	■	■	■	■	■	■

(1) Includes headlights "on" reminder buzzer; Interval windshield wipers; RH visor mirror; Map pocket on door-trim panel; Passenger side door courtesy light switch. (2) See your Ford Dealer for details. (3) Includes lights for glove box, engine compartment, cargo box; Under-instrument panel courtesy lights; Passenger side door courtesy light switch; Dual beam dome/map light; Headlights "on" reminder buzzer.

COLOR SELECTIONS

Exterior Paint Colors	Interior Trim Colors			
	Medium Grey	Regatta Blue	Canyon Red	Chestnut
Raven Black	X		X	X
Dark Grey Metallic	X		X	
Medium Silver Metallic	X	X	X	
Bright Canyon Red	X		X	X
Light Regatta Blue	X	X		
Alpine Green Metallic	X			X
Dark Canyon Red	X		X	X
Dark Shadow Blue Metallic	X	X		X
Colonial White	X	X	X	X
Desert Tan Metallic				X
Light Chestnut				X

Some of these paint colors are shown in this catalog. On the printed page, of course, colors are at best only representative of the originals. Your Ford Dealer can show you actual samples of paint colors as well as interior trim materials.



Raven Black



Dark Grey Metallic



Medium Silver Metallic



Bright Canyon Red



Light Regatta Blue



Alpine Green Metallic



Dark Canyon Red



Dark Shadow Blue Metallic



Colonial White



Desert Tan Metallic



Light Chestnut

SAFETY AND OWNER BENEFITS

THE FORD QUALITY COMMITMENT

The Ford Quality Commitment is built on a basic and simple concept: Integrity. Integrity in the way we build our products, integrity in our dealerships' service and integrity in the treatment of our customers.

TOGETHER WE CAN SAVE LIVES

Ford Motor Company strongly encourages all passengers to use their safety belts.

In Ford trucks, outboard front seat lap and shoulder belts have automatic retractors. Front seat center passenger has a lap belt with retractor. All rear seat positions (F-Series SuperCab and Crew Cab) also have lap belts with retractors.

Ford urges the use of child and infant restraints, as required by law in all states. Ford's easy-to-install Tot-Guard (for children 20 to 50 pounds) and Infant Carrier (for children up to 20 pounds) are available at all Ford Dealers. If a child restraint requires a top-tether, Ford trucks provide special anchorages.



FORD LIFEGUARD DESIGN SAFETY FEATURES

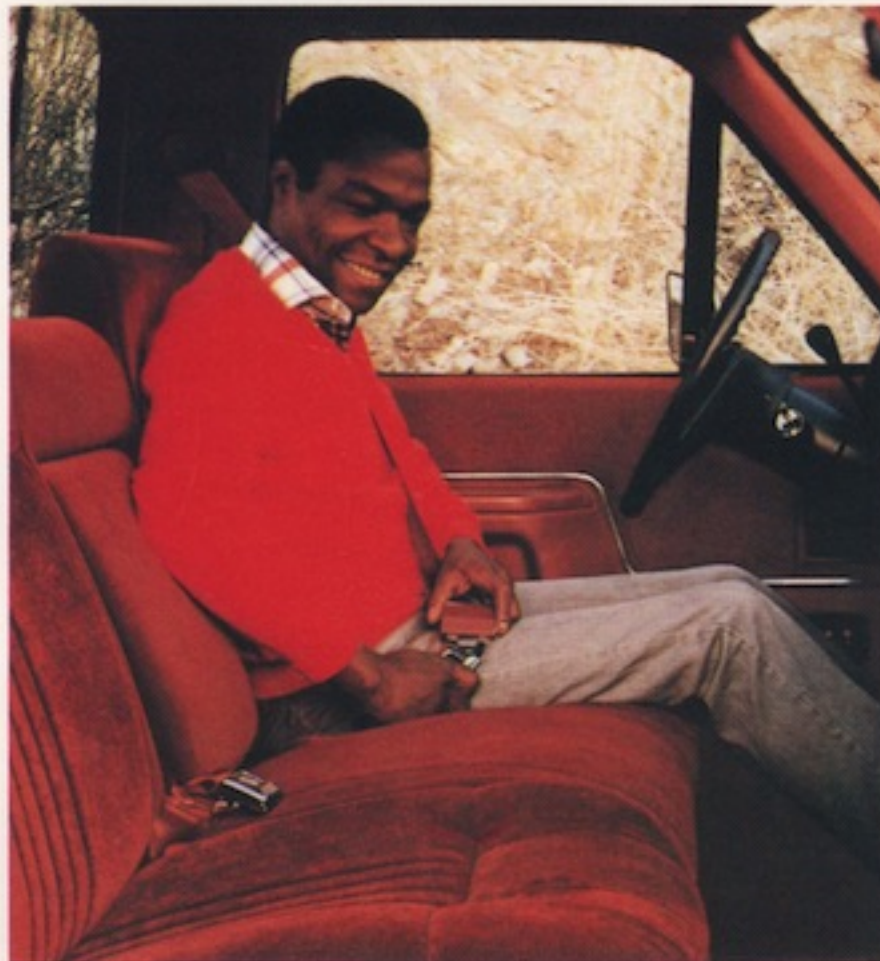
Vehicle Operation

- Split service hydraulic brake system with warning light
- Electronically-controlled rear antilock brake system on 4x2 and 4x4 in 2-wheel drive mode
- Corrosion-resistant brake lines
- Turn indicator with lane-changing signal feature
- Hazard warning flasher
- Backup lights
- Wraparound parking lights coupled with headlights
- Two-speed windshield wipers
- Windshield washers
- Outside rearview mirrors
- Glare-reduced instrument panel, windshield wiper arms and windshield pillars
- Uniform transmission shift quadrant with safety starting switch (on all vehicles equipped with automatic transmission)

- Continuously variable control illumination intensity (instrument cluster lighting)
- Safety hood latch system
- Responsive windshield defroster system
- Tamper-resistant (non-reversing) odometer
- Speedometer with highlighted 55 mph

Occupant Protection

- Safety-designed front end structure
- Safety-designed roof structure
- Two-position door safety latches



- Integral lap and shoulder belts with automatic retractors for front outboard occupants
- Positive safety belt fastening reminder light and buzzer or chime for the driver's seat
- Lap belt for center front and rear passenger
- Energy-absorbing steering column
- Energy-absorbing armrests and safety-designed door handles
- Energy-absorbing instrument panel with padding for right and center front passengers (where three passenger front seat is provided)
- Energy-absorbing sun visors
- Safety glove box latch
- Inside yieldaway rearview mirror
- Impact-absorbing laminated safety glass windshield
- Flame-resistant interior materials
- Safety-designed coat hook
- Safety-designed radio control knobs and push buttons

Anti-Theft

- Locking steering column with key reminder buzzer (or chime) with "Park" interlock or push button for key release.
- Visible vehicle identification number.



Participating Ford Dealers are now offering the Lifetime Service Guarantee, which guarantees their work on your Ford vehicle for as long as you own it. This means that the covered repair is paid for once — and never again. If it ever has to be fixed again, the repairing dealer will fix it free. Free parts. Free labor. Even if the vehicle is kept a lifetime. It doesn't matter where it was purchased, or whether it's new or used; the work is still covered by the repairing dealer.

This limited warranty covers vehicles in normal use. Items not covered include routine maintenance parts, belts, hoses, sheet metal, and upholstery. Ask to see this guarantee when you visit your participating Ford Dealer.



The optional Ford Extended Service Plan covers major components on new Ford cars and trucks for longer than the vehicle's basic warranty. The cost for this added protection is so moderate that it could pay for itself the first time you need it. Your Ford Dealer has full details.

Ford Motor
Credit
Company



Ford Motor Credit Company is interested in helping to fill the transportation needs of every qualified buyer of a Ford product. A participating dealer can arrange financing terms or a Red Carpet Lease® tailored to your circumstance. Ford Credit has offices conveniently located throughout the United States.

Motorcraft 

QUALITY REPLACEMENT PARTS
FROM FORD

Genuine Ford and Motorcraft original equipment replacement parts meet the same high standards as those installed in production. They are your best assurance of quality and long-term satisfaction.

SCHEDULED MAINTENANCE

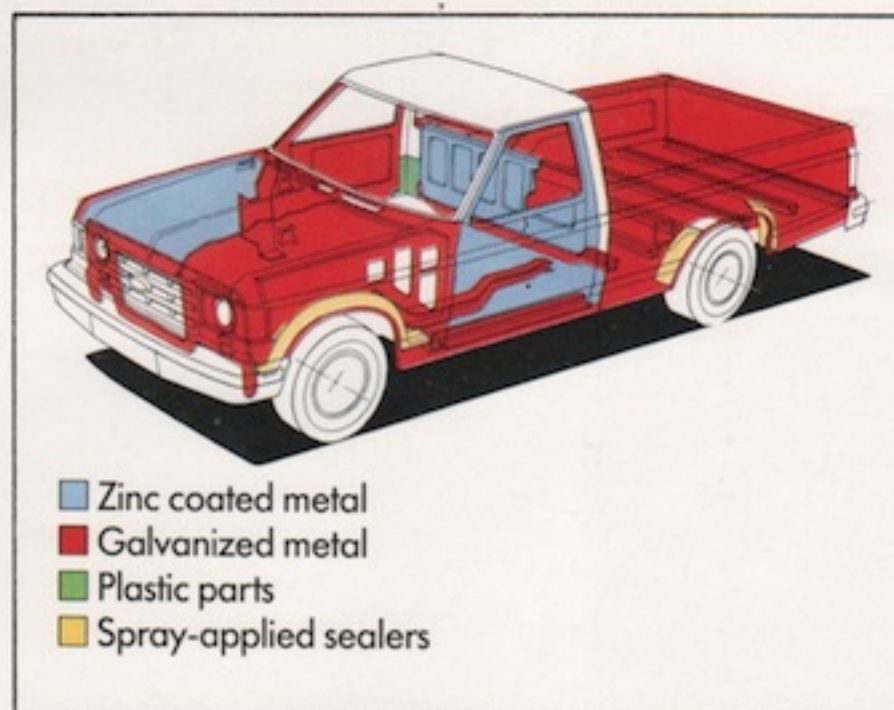
Here are some examples of scheduled maintenance intervals for the 1987 F-Series. For complete recommendations, refer to the Maintenance Schedule Booklet.

Engine oil and filter change.	each 7,500 miles or 6 months
Spark plug change.	each 30,000 miles
Air filter replacement.	each 30,000 miles
Engine coolant replacement.	each 30,000 miles or 3 years

GREATER CORROSION PROTECTION

Ford F-Series trucks for 1987 offer additional improved corrosion protection including two-sided galvanized steel as well as galvanized steel for some body parts which were previously untreated.

These improvements, in addition to special treatments such as aluminized wax, and the use of non-metallic parts which cannot corrode, are further evidence of Ford's continuing commitment to building high-quality trucks.



- Zinc coated metal
- Galvanized metal
- Plastic parts
- Spray-applied sealers

FORD-PAID REPAIR PROGRAMS AFTER THE WARRANTY PERIOD

Sometimes Ford offers adjustment programs to pay all or part of the cost of certain repairs. These programs are intended to assist owners and are in addition to the warranty or to required recalls. Ask Ford or your dealer about such programs relating to your Ford or Lincoln-Mercury vehicle.

To get copies of any adjustment program for your vehicle or the vehicle of interest to you: Call Ford toll-free at 1-800-241-3673. Alaska/Hawaii call 1-800-241-3711 and in Georgia call 1-800-282-0959.

Or write Ford at:
Ford Customer Information System
Post Office Box 95427
Atlanta, Georgia 30347

We'll need your name and address; year, make and model vehicle, as well as engine size; and whether you have a manual or automatic transmission.

TECHNICAL SERVICE BULLETINS

All vehicles need repairs during their lifetime. Sometimes Ford issues technical service bulletins (TSBs) and easy-to-read explanations describing unusual engine or transmission conditions which may lead to costly repairs, the recommended repairs, and new repair procedures. Often a repair now can prevent a more serious repair later. Ask Ford or your dealer for any such TSBs and explanations relating to your Ford or Lincoln-Mercury vehicle.

To get copies of these technical service bulletins and explanations for your vehicle or the vehicle of interest to you: Call Ford toll-free at 1-800-241-3673. Alaska/Hawaii call 1-800-241-3711 and in Georgia call 1-800-282-0959.

Or write Ford at:
Ford Customer Information System
Post Office Box 95427
Atlanta, Georgia 30347

We'll need your name and address; year, make and model vehicle, as well as engine size; and whether you have a manual or automatic transmission.

OPTIONS AVAILABILITY

Options shown or described in this catalog are available at extra cost and may be offered only in combination with other options and subject to additional ordering requirements or limitations.

PRODUCT CHANGES

Ford Division reserves the right to change product specifications at any time without incurring obligations. It is important to note also that some of the items shown on vehicles in this publication are available through retail organizations and establishments not connected with Ford Motor Company. Availability, price, quality and durability of these items rest solely with the respective manufacturers and their sales organizations, and Ford assumes no responsibility for their use.

"ASK YOUR FORD DEALER"

Following publication of this catalog, certain changes in standard equipment, options, prices and the like, or product delays, may have occurred which would not be included in these pages. Your Ford Dealer is your best source for up-to-date information.

BUY OR LEASE A NEW FORD F-SERIES PICKUP

**BUY OR LEASE
A NEW FORD F-SERIES PICKUP**

