

1985

Ford EXP





Donald E. Petersen  
President

Ford Motor Company  
The American Road  
Dearborn, Michigan 48121

Dear New Car Buyer:

Quality is Job 1 at Ford Motor Company. This isn't just a phrase. It's a commitment to total quality.

Total quality begins with the design and engineering of our cars and continues through the life of the product. We plan them with a vision of the customer — of you — sitting behind the wheel of a new car.

Total quality will be apparent to you through functional performance, overall vehicle integrity, the "look and feel" of materials, satisfying aesthetics, safety, serviceability and cost of ownership.

Total quality requires continuous improvement in everything we do. Every employee at Ford Motor Company is involved in the process of meeting your needs and expectations.

I think the 1985 Ford EXP is an excellent example of the quality I'm talking about. Its clean, aerodynamic shape is not only sporty but functional, combining with independent suspension at all four wheels to produce an efficient, fun-to-drive 2-seater. For extra performance, the 1.6 liter turbocharged engine makes EXP Turbo Coupe an exciting road car.

I invite you to look over our new 1985 Ford cars in your dealer's showroom. Test drive them on the road. When you do, I think you'll understand all that's involved in the total quality concept at Ford Motor Company.

A handwritten signature in black ink that reads "Donald E. Petersen". The signature is written in a cursive, flowing style.

Donald E. Petersen  
President  
Ford Motor Company

# Ford EXP for 1985

A personal, sporty 2-seater, Ford EXP combines fuel efficiency\* and hatchback versatility. Front-wheel drive and a 4-wheel independent suspension system make it a roadworthy, fun-to-drive car for the open highway or around-town errands.



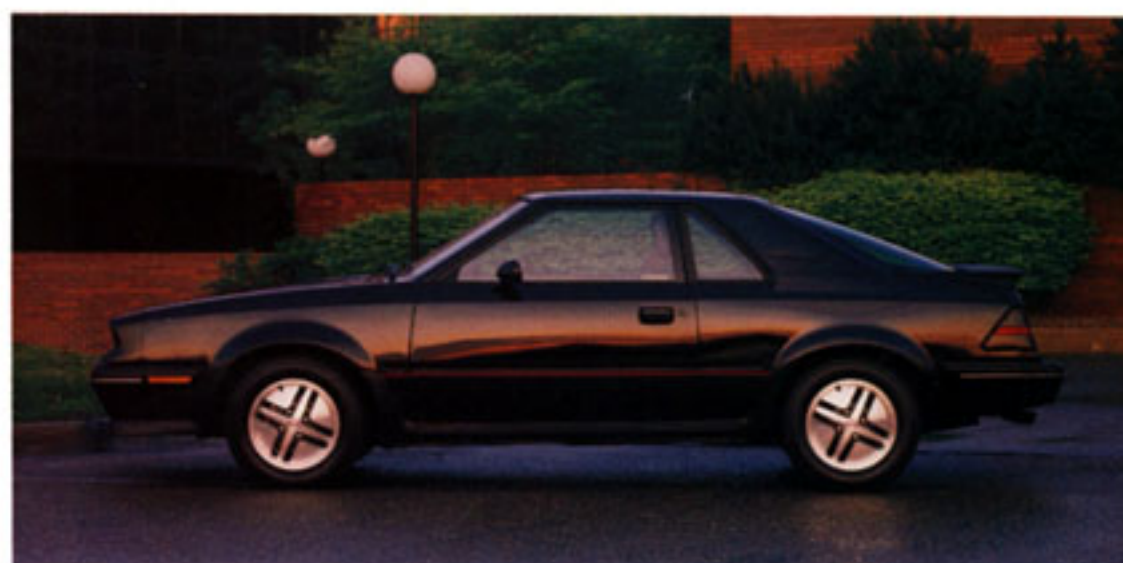
The **Standard EXP** offers the pep of the 1.6 liter HO (higher output) engine, 5-speed manual transmission and a host of comfort and convenience items.

## Contents

Quality and Workmanship .....	4-5
Ride and Handling .....	6
Power and Efficiency .....	7
Ford EXP Environment .....	8-9
Ford EXP, Luxury Coupe, Turbo Coupe .....	10-11
Features, Options, Colors and Trims .....	12-13
Safety Features .....	14
Owner Information .....	15



**EXP Luxury Coupe** combines sportiness with a higher level of standard equipment, extra touches to enhance EXP driving pleasure.



In **EXP Turbo Coupe**, the emphasis is on performance, with the 1.6 liter electronically fuel-injected turbocharged engine and special suspension componentry.

\*See Gas mileage, page 7.

Shown on front and back covers:  
EXP Luxury Coupe

**A word about this catalog:** Some of the equipment shown or described throughout the catalog is available at extra cost.

# Quality and Workmanship

Ford Motor Company is committed to building cars that meet the high quality standards expected by those who drive them.

Every aspect of the car's design has a purpose, whether it be aerodynamic efficiency or interior comfort.

Engineering systems — the engine and suspension, for example — are

manufactured and assembled under strict quality controls.

The hood, doors, decklid, moldings — everything has stringent fit tolerances. The paint finish is smooth and lustrous.

Behind the quality of every Ford car are the dedicated people who produce it.

**Design and engineering, where quality begins.**

Quality demands that before a car can be built right, it must first be designed and engineered right.



Today, engineers can measure with amazing accuracy how a car responds to actual on-road conditions long before it is built. It's done with simulations of full-scale vehicles and individual components in action on computer screens.

Vehicles can be driven around pylons at various speeds, climb steep grades, run over potholes, just as they would be in real testing at a proving ground. The computer displays in close detail the intricate movements of the suspension and other systems. They're evaluated to high standards of performance, redesigned and retested if necessary.

Even with this advanced technology, however, the art of automotive design and engineering remains in the hands of designers and engineers. The computer is there to assist them.

#### **Withstanding stress. The ultimate test of a car's quality.**

Drivers expect their cars to function properly in everyday use. So Ford cars are road-tested over hundreds of thousands of miles, are subjected to extreme stress and load conditions over paved and unpaved surfaces, up and down steep grades, through corrosive salt baths. They run the full course of demanding acceleration, cornering and braking maneuvers.

But even before these road tests, Ford engineers put prototype cars through numerous laboratory tests. The Electro-dynamic Actuator, for example, drives a car continuously under a variety of road and weather conditions. One objective is to eliminate squeaks and rattles caused by bumps and jolts and the effects of hot and cold temperatures.



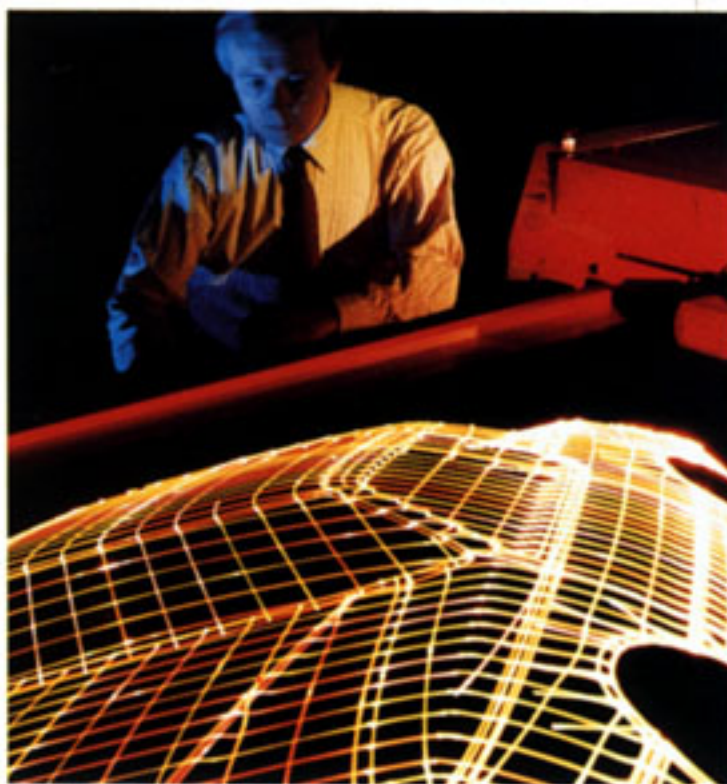
Left: EXP Luxury Coupe shown with optional TR-type aluminum wheels.



#### **Computers, robots and lasers in manufacturing and assembly.**

Monitoring engine performance, checking electrical systems for accuracy, helping ensure smooth paint applications for finish quality — these are some of the vital roles that computers play in the assembly of Ford cars.

Ford places great importance also on robotics to achieve high quality in fit, finish and function. Robots are programmed to provide consistency and control to an extraordinary degree. They can do the 2,000 welds on a car's body quickly, completely, with the precision the blueprints demand.



The laser, another advanced-technology tool, helps improve quality by providing accurate measurement of everything from engine castings and door margins to nuts and bolts and fasteners.

#### **Special quality steps: Corrosion protection.**

Ford takes tough measures to protect its cars against the damaging effects of corrosion. Galvanized steel is used for important underbody and structural parts. Pre-coated steel, featuring corrosion inhibitors, is also used in major body panels. Special treatments are applied to selected areas of the body structure.

#### **Ingenuity and teamwork. The essential ingredients of high quality.**

At Ford, striving for high quality is a team effort. This is nowhere more evident than in the hundreds of recommendations for quality improvements submitted every year by more than 1,100 Employee Involvement (EI) groups in 65 Ford plants across America.

In addition to the EI groups, there are "durability-reliability" teams specially trained to carry out extensive quality control programs before production begins, and "quality" teams whose primary responsibility is quality improvement after production gets under way.



With all the technology and resources at work producing quality products, the people at Ford realize that quality is a never-ending preoccupation. This attitude is essential to Ford's total commitment to quality.

# Ride and Handling

## Independent rear suspension (IRS)

The fully independent rear suspension is a system widely recognized for its advanced design characteristics.

In EXP, the transverse suspension arms combine with the tie rods to provide stable lateral and longitudinal control of wheel movements.

To reduce the effects of road shocks transmitted to the body structure, and to help minimize noise transfer to the passenger compartment, compliant rubber

## Airflow as a stabilizing force

EXP's aerodynamic shape does more than help the engine deliver excellent fuel economy with its low .32 coefficient of drag.\* The suspension and steering systems benefit as well. Through careful fine-tuning of selected design areas, airflow is directed to reduce front and rear lift for directional stability and cornering agility.

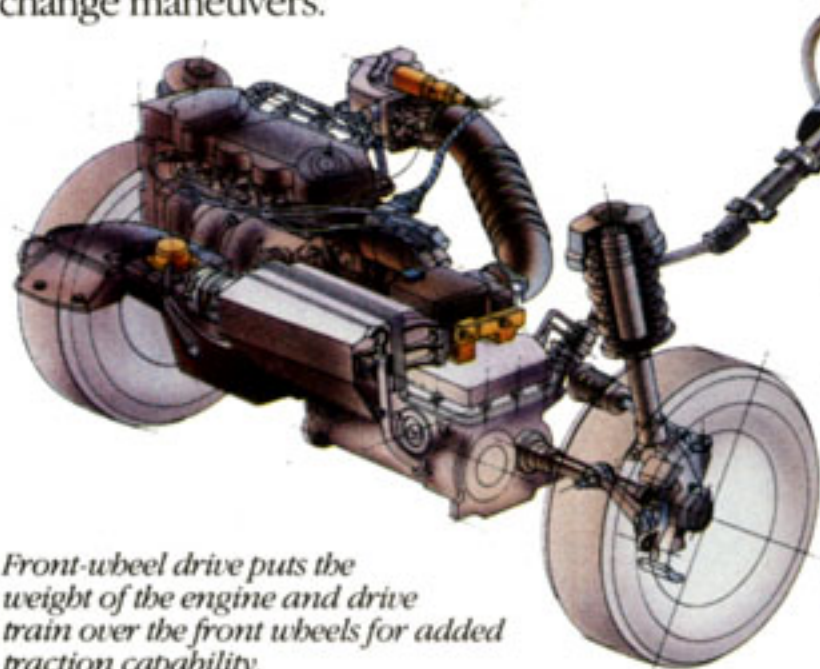
\*See Gas mileage, page 7.



Front-wheel-drive EXP is engineered for the road with a good ride and handling system. Contributors to excellent road manners are 4-wheel independent suspension, rack and pinion steering, steel-belted radial tires, and power-assisted front disc/rear drum brakes.

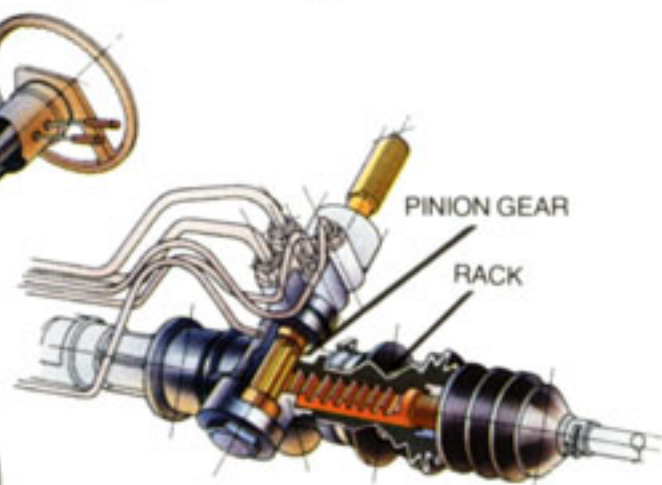
## MacPherson strut front suspension

EXP's front suspension features MacPherson struts with a stabilizer bar linking the left and right forged lower suspension arms. The stabilizer bar reduces body lean in sharp turns and quick lane change maneuvers.



*Front-wheel drive puts the weight of the engine and drive train over the front wheels for added traction capability.*

bushings are used at all attaching points. And because there is no solid rear axle in the conventional sense, unsprung weight at each wheel is reduced, thereby improving ride quality over rough surfaces.



## Rack and pinion steering

EXP has precise rack and pinion steering to complement the advanced 4-wheel independent suspension system.

The responsiveness of rack and pinion steering is directly related to its simple, low-friction design. At the end of the steering column is a "pinion gear" which engages a "rack" of gear teeth that's linked to the steering arms. Just a slight turn of the steering wheel rotates the pinion gear and moves the rack laterally.

The feel of rack and pinion steering is firm, precise and adds to EXP's fun-to-drive qualities. Power steering (illustrated) is standard in EXP Turbo Coupe.

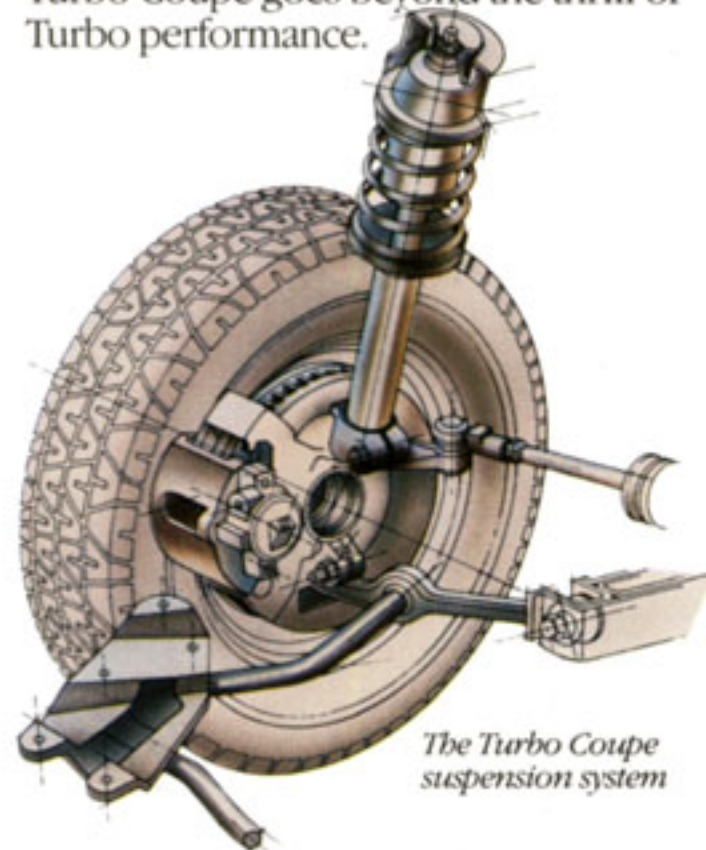
## TR-type suspension

The TR-type suspension is an option available with the EXP Luxury Coupe model. This suspension, engineered for tight handling, includes P165/70R 365 black sidewall tires mounted on either TR-type cast aluminum or styled steel wheels, and special handling components — large front stabilizer bar, heavy-duty shocks, and stiff front and rear springs.

## EXP Turbo Coupe suspension

EXP Turbo Coupe rides on larger, low-aspect ratio P185/65R 365 Michelin TRX tires. Wheels are TR-type cast aluminum. The Turbo suspension features Koni® shocks with unique valving, plus increased front spring rates.

With this specially designed handling system, the excitement of driving an EXP Turbo Coupe goes beyond the thrill of Turbo performance.



*The Turbo Coupe suspension system*

# Power and Efficiency

## Electronically fuel-injected 1.6 liter turbocharged engine

Turbocharging provides two major benefits. Under normal driving conditions, the turbocharger remains at idle, which helps fuel economy. But at the driver's command it delivers a quick surge of power when the accelerator is pressed.

Cubic inch for cubic inch, the 1.6 liter turbo engine is among the most powerful production engines Ford has ever produced. It has an overhead cam design and 8:1 compression ratio, forged aluminum



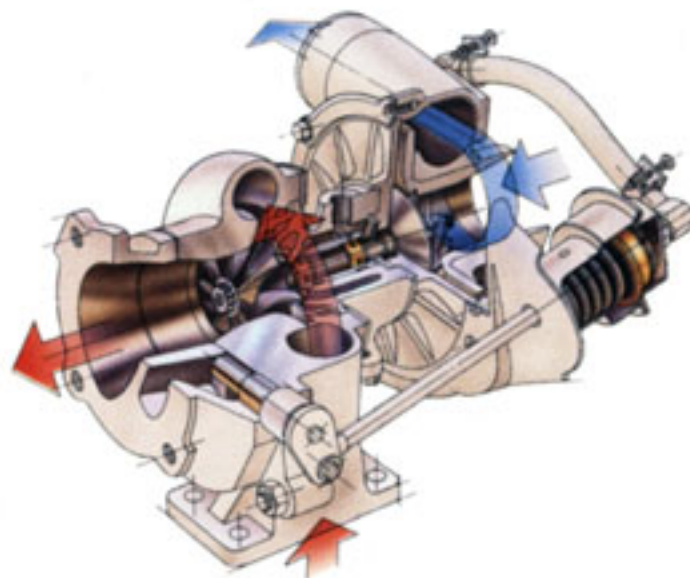
## EXP's standard powerplant

Responsive performance combined with excellent fuel economy were the objectives in the design of the standard 1.6 liter HO engine.

The CVH design has hemispherical combustion chambers in the cylinder head and sculptured piston crowns that produce a "squish" effect on the fuel/air mixture — a turbulence which forces the fuel/air mixture to the center of the chambers for more complete burning.

Intake and exhaust valves are angled at about 45 degrees in two planes (i.e., compound valves) to maximize their size, thus providing a free flow of air. The central spark plug location allows a more direct power charge for efficient combustion.

The HO engine is teamed with a 5-speed manual transaxle. An indicator light signals the right moment to upshift for optimum fuel economy. Also available is the optional automatic transaxle with Ford's patented "split-torque" design that reduces hydraulic slippage for increased fuel efficiency.



*Turbocharging: Hot exhaust gases (red) turn the turbine wheel to power the compressor. Outside ambient air (blue) enters the compressor and is blown through the induction system to the combustion chambers.*

pistons, high-temperature alloy valve materials and an oil cooler. A 5-speed transaxle is standard.

The "blow through" turbocharger is positioned upstream from the fuel injectors and throttle plate. Unlike "draw through" units, this "blow through" system minimizes lag time, delivering crisp, quick throttle response.

The turbo engine is electronically fuel injected. EFI provides a number of important advantages over the conventional carburetor. The major advantage is more efficient use of fuel, accomplished by the precise high-pressure injection of fuel directed in front of each intake valve.

EFI pays off on every trip with improved overall operation: easy starting and smooth running, even in hot and cold temperatures.

## EEC-IV: one of the world's most advanced automotive computers

The 1.6 liter turbocharged engine benefits from a computer module called EEC-IV — a fourth generation state-of-the-art, microprocessor-based engine control system capable of processing thousands of operations per second.



*EEC-IV computer*

EEC-IV adjusts the air/fuel mixture and ignition timing for a quick cold start. On the road, it constantly senses what the car is being asked to do, then balances the air/fuel mixture and timing for optimum power, response and fuel efficiency.

## EXP's fuel-efficient aerodynamics

Fuel economy is enhanced by EXP's aerodynamic shape. The lower the coefficient of drag ( $C_D$ ) of a vehicle, the more aerodynamically efficient it is. EXP's shape helps it slip through the air, requiring less power from the engine to overcome resistance. Because the engine isn't working as hard, it uses less fuel.

## EXP powerteams

Engine	Transaxle	Final Drive Ratio		
		49 States	High Altitude	Calif.
1.6L HO	5-Speed manual	3.73	3.73	3.73
1.6L HO	Automatic	3.31	3.31	3.31
1.6L Turbo	5-Speed manual	3.73	3.73	3.73

## Gas mileage

1985 EPA mileage estimates were not available at the time this catalog was approved for printing. As soon as EPA figures are released, your Ford Dealer will be among the first to receive this information and will be happy to pass it along to you.

# Ford EXP Environment

## The principle of ergonomics

Correct interior design involves application of the science of ergonomics: the close relationship of the driver to the car. Instruments, controls, seating — all must be properly positioned for maximum convenience and efficiency.

## Ford EXP ergonomics

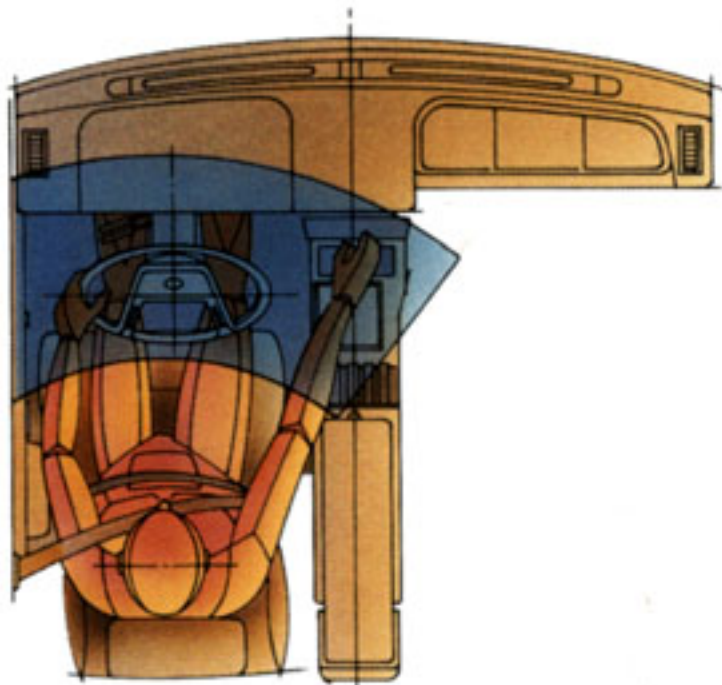
In EXP, applied ergonomics is evident in the "driver biased" instrument panel, which is curved so that controls and instruments are angled toward the driver. The instrument cluster includes a tachometer, trip odometer, fuel and temperature gauges, warning lights for the ammeter and oil pressure. Side window demisters are part of the design to help keep the view to the outside mirror(s) clear.





Frequently used controls are within easy reach on two column-mounted levers. The horn is located in the hub of the soft-feel sport steering wheel. The overhead console places the electronic digital day/date clock and courtesy/map lights within easy reach of both driver and passenger.

Seat tracks provide seven inches of travel to place the driver comfortably in relation to the steering wheel and controls. The reclining seat backs also assist in adjusting the driver to the most comfortable position.



### Seating comfort

The standard bucket seats in EXP are contoured to accommodate the shape of the body comfortably. The deep molded seat cushions rest on a spring mat that is firm yet flexible. Firm inserts are used in the side bolsters for lateral support.

Seat belts have a comfort regulator feature that eliminates pressure on chest and shoulder, allowing greater freedom of movement.



Left: EXP Luxury Coupe interior compartment and instrument panel (some equipment shown may be optional).



The standard EXP and Luxury Coupe series have low-back buckets with seat back recliners and fold-down center armrest. In the Luxury Coupe, the driver's seat is equipped with 4-way manual adjustment (up/down, forward/back).

The top-of-the-line sport performance seats are standard in EXP Turbo Coupe. These special seats recline fully and provide additional lateral and lumbar support.



Sport performance seats, standard in EXP Turbo Coupe (some equipment shown may be optional).



EXP Turbo Coupe instrument panel with padded sport steering wheel (some equipment shown may be optional).

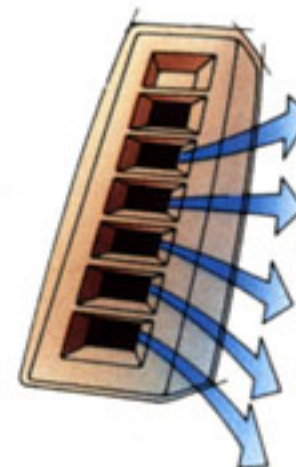
### Versatile design

Not all 2-seat cars have EXP's hatchback versatility, an important feature for everyday practical use.

EXP has 31.1 cu. ft. of cargo space based on the EPA interior volume index — room for golf clubs, suitcases — a variety of gear you couldn't take with you in some 2-seaters. The cargo floor is carpeted and has color-keyed rub strips. A bright cargo restraining bar helps keep belongings in place. And a cargo cover is included in EXP Luxury Coupe and Turbo Coupe.

### Power ventilation system

The system operates when the heat control selector is in the "vent" position. Outside air enters the passenger compartment through the four registers on the instrument panel. The flow of air is regulated by four fan speeds.



# Ford EXP

Sleek EXP is characterized by its bubble-back rear hatch window, styled steel wheels and bright dual exhaust extensions.

The equipment list on page 13 details the impressive array of convenience items in EXP, a list that includes an overhead console, tachometer, trip odometer and remote locking fuel filler door.

## Luxury Coupe

Luxury Coupe is for the driver who wants a higher level of appointments. Reclining low-back buckets have all-cloth upholstery, with 4-way manual adjustment for the driver's seat. AM/FM stereo,\* dual remote-control sport mirrors, center console, variable wipers, rear window defroster and remote-control liftgate release are all standard.

## Turbo Coupe

For the performance-minded driver who

appreciates front-wheel-drive traction and good fuel economy.\*\* Inside: all-cloth sport performance seats, AM/FM stereo with cassette.\* For performance: P185 low-aspect ratio Michelin tires on TR-type styled aluminum wheels, power-assisted rack and pinion steering, unique Turbo suspension and the 1.6 liter electronically fuel-injected turbocharged engine.

\*May be deleted for credit. \*\*See Gas mileage, page 7.

*Below left: EXP Luxury Coupe shown with optional TR-type styled steel wheels.*

*Below: EXP Turbo Coupe, powered by the 1.6 liter EFI turbocharged engine.*

*Bottom: Ford EXP, with its bubble-back rear hatch window and a long list of standard features.*



# Ford EXP Features and Options

## Electronic AM/FM stereo search radio with cassette player

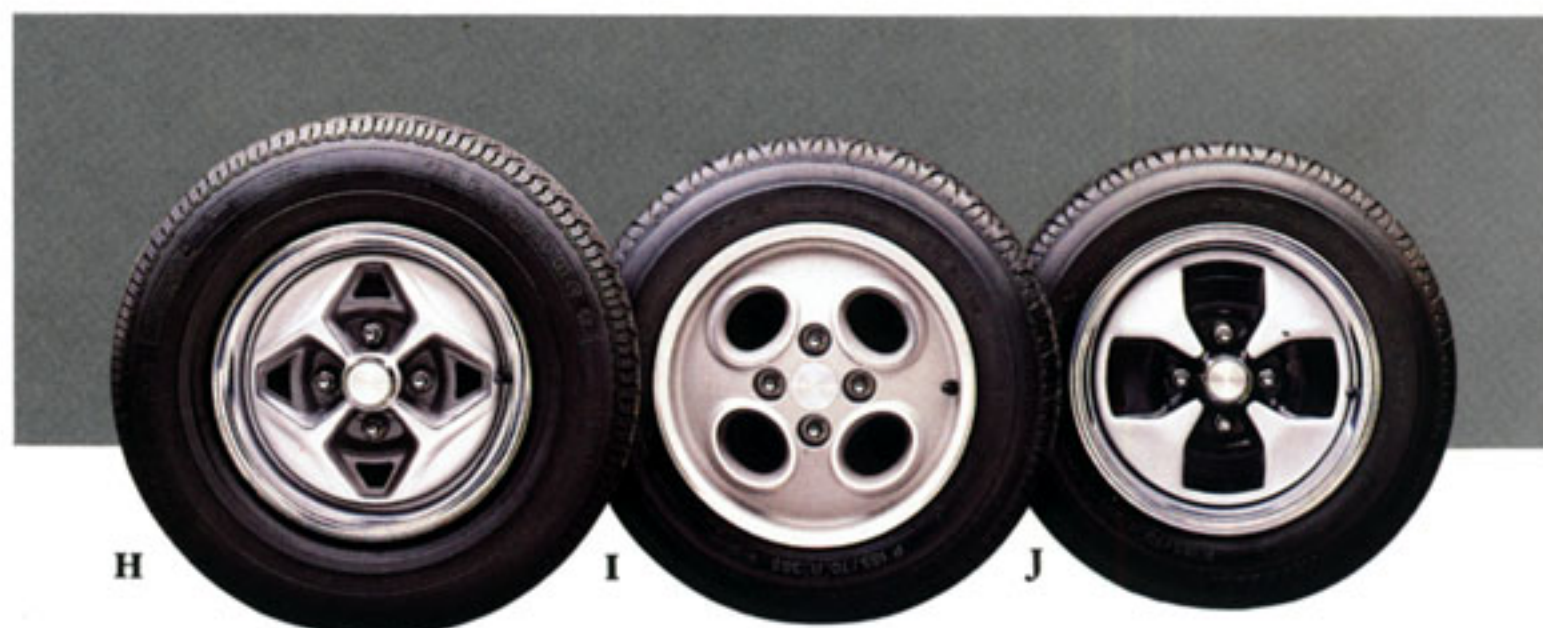
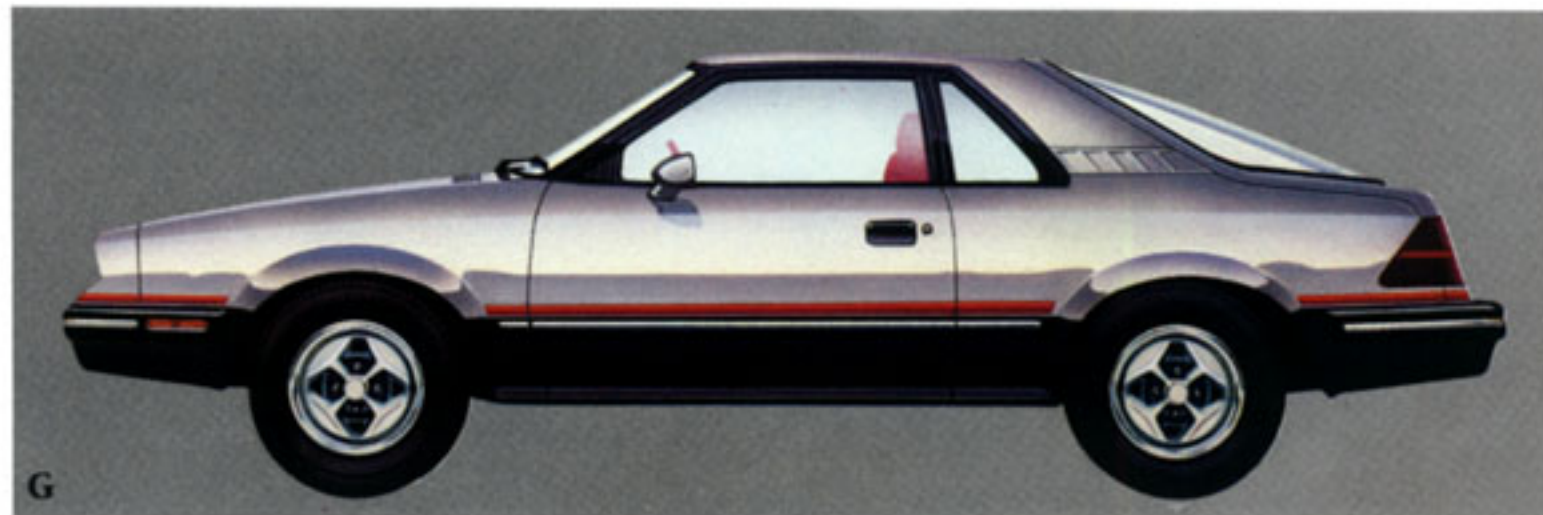
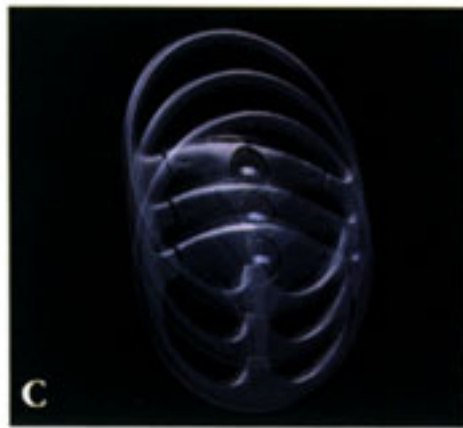
Some of the finer features of this state-of-the-art quality sound system are: Dolby® Noise Reduction; seek tuning that selects the next listenable station either up or down the scale; scan tuning that auditions stations for 8 seconds and "music search" that locates the beginning of the next or prior song on a cassette tape.

## Graphic equalizer

Ford EXP's optional graphic equalizer features 7-band tone control for precise sound mixing over a wide frequency range.

## Illustrated options

**A.** Electronic AM/FM Stereo Search Radio with Cassette Player; **B.** Speed Control; **C.** Tilt Steering Wheel; **D.** Graphic Equalizer; **E.** Flip-Up Open-Air Roof; **F.** Tot-Guard for children 20 to 50 pounds (available at Ford Dealers); **G.** Lower Two-Tone Paint with Tape Stripe; **H.** Sport Styled Steel Wheels with Trim Rings (standard on EXP and EXP Luxury Coupe); **I.** TR-Type Aluminum Wheels; **J.** TR-Type Styled Steel Wheels (optional on Luxury Coupe only).



## A word about Ford options

Some of the equipment shown or described throughout the catalog is available at extra cost.

## FORD EXP FEATURES

	Ford EXP	EXP Luxury Coupe	EXP Turbo Coupe
<b>ENGINEERING</b>			
Front-wheel drive	S	S	S
1.6 liter HO (higher output) CVH engine	S	S	NA
1.6 liter EFI turbo engine	NA	NA	S
EEC-IV (Electronic Engine Control System)	NA	NA	S
5-speed manual transaxle; self-adjusting clutch linkage	S	S	S
Upshift indicator light (manual transaxle only)	S	S	NA
45-amp. maintenance-free battery (48-amp. in Turbo Coupe)	S	S	S
Four-wheel independent suspension system; front stabilizer bar	S	S	S
Turbo suspension package	NA	NA	S
Manual rack and pinion steering	S	S	NA
Power rack and pinion steering	NA	O	S
Power front disc/rear drum brakes	S	S	S
P165/80R 13 BSW steel-belted radial tires	S	S	NA
P185/65R 365 Michelin TRX BSW steel-belted radial tires	NA	NA	S
<b>EXTERIOR</b>			
Bubble-back rear hatch window	S	S	S
Two-Tone paint treatment	O	O	S
Front air dam	NA	NA	S
Rear spoiler	NA	NA	S
Halogen headlamps	S	S	S
Dual remote-control sport mirrors (RH convex)	NA	S	S
Bodyside moldings	S	S	O
Styled steel wheels with bright trim rings	S	S	NA
Turbo TR-type aluminum wheels	NA	NA	S
Rear window defroster	NA	S	S
<b>INTERIOR</b>			
Low-back reclining bucket seats with fold-down center armrest	S	S	NA
4-way manually adjustable driver's seat	O	S	NA
Sport performance bucket seats	NA	O	S
Cloth seating surfaces	S	NA	NA
All cloth seating	NA	S	S
Deluxe seat belts with comfort regulator feature	S	S	S
Wrapover door trim panels with map pockets	S	S	S
Luxury weight floor carpeting	S	S	S
Steering column-mounted controls for turn signals, headlamp high-beams, flash-to-pass feature, windshield wipers and dual fluidic washer system	S	S	S
Interval windshield wipers	NA	S	S
Consolette	S	NA	NA
Console (1)	NA	S	S
Instrumentation Group (2)	S	S	S
AM radio (3)	S	NA	NA
AM/FM stereo radio (3)	O	S	NA
AM/FM stereo radio with cassette player (3)	O	O	S
Overhead console (4)	S	S	S
Courtesy lights (5)	S	S	S
Visor mirrors	NA	S	S
Cargo restraining bar	S	S	S
Cargo area cover	NA	S	S
Remote-control liftgate release	NA	S	S
Remote locking fuel filler door	S	S	S

- (1) Includes integral ashtray with cover, cigarette lighter, graphic display warning module with indicators for taillamps, front low beams, washer fluid level and low fuel.  
 (2) Tachometer, temperature and fuel gauges, oil pressure and ammeter warning lights, trip odometer, and turbo overboost light in panel applique (with Turbo Coupe).  
 (3) May be deleted for credit.  
 (4) Includes courtesy/map lights and electronic day/date digital clock with stopwatch feature.  
 (5) Glove box, ashtray, cargo compartment with light switch, and headlamps-on warning buzzer.

S = Standard O = Optional NA = Not Available

## FORD EXP OPTIONS

	Ford EXP	EXP Luxury Coupe	EXP Turbo Coupe
<b>ENTERTAINMENT SYSTEMS</b>			
AM/FM stereo radio	O	S	NA
AM/FM stereo radio with cassette player	O	O	S
AM/FM electronic stereo search radio with cassette player	O	O	O
Premium Sound System*	O	O	O
Graphic equalizer	O	O	O
<b>APPEARANCE AND PROTECTION</b>			
Clearcoat paint	O	O	O
Lower Two-Tone paint with tape stripes	O	O	S
Knit vinyl seats	O	NA	NA
Lower bodyside protection. Vinyl coating under the paint to guard against stone pecking and road salt.	O	O	O
Bodyside moldings	S	S	O
Front floor mats	O	O	O
Front license plate bracket	O	O	O
<b>COMFORT AND CONVENIENCE</b>			
Air conditioning	NA	O	O
Sport performance seats	NA	O	S
4-way manual driver's seat	O	S	NA
Flip-up open-air roof	O	O	O
Speed control	O	O	NA
Tilt steering wheel	O	O	O
Tinted glass — complete. Recommended with air conditioning.	O	S	S
RH illuminated visor mirror	NA	O	O
<b>PERFORMANCE AND POWER ASSISTS</b>			
TR-type suspension	NA	O	NA
Power steering	NA	O	S
Automatic transaxle	NA	O	NA
Heavy-duty maintenance-free battery (54 amp.)	O	O	NA
California Emissions System	O	O	O
<b>TIRES</b>			
P165/80R 13 RWL with thin white band	O	O	NA
P165/70R 365 BSW (TR-type suspension)	NA	O	NA
<b>WHEELS</b>			
TR-type aluminum wheels (TR-type suspension)	NA	O	NA
TR-type styled steel wheels (TR-type suspension)	NA	O	NA

\*Includes power amplifier and four upgraded stereo speakers in quarter panels and front doors.

S = Standard O = Optional NA = Not Available



## COLORS AND TRIMS

				Interior Trim Colors
Charcoal	Canyon Red	Regatta Blue	Sand Beige	Exterior Colors
•	•	•	•	Black
•	•	•	•	Light Oxford Grey
•	•	•	•	Bright Red
•	•	•	•	Midnight Regatta Blue
•	•	•	•	Sand Beige
•	•	•	•	Medium Sand Beige
•	•	•	•	Oxford White
•	•	•	•	<b>Optional Clearcoat Paint*</b>
•	•	•	•	Silver Metallic
•	•	•	•	Medium Charcoal Metallic
•	•	•	•	Medium Regatta Blue Metallic
•	•	•	•	Sand Beige Metallic
•	•	•	•	<b>Optional Two-Tone Paint</b>
•	•	•	•	Silver Clearcoat Metallic/Medium Charcoal Clearcoat Metallic
•	•	•	•	Sand Beige/Medium Sand Beige
•	•	•	•	Oxford White/Black
•	•	•	•	Medium Charcoal Clearcoat Metallic/Black
•	•	•	•	Bright Red/Black
•	•	•	•	Sand Beige Clearcoat Metallic/Black
•	•	•	•	<b>Turbo Coupe Exterior Colors</b>
•	•	•	•	Black
•	•	•	•	Bright Red/Black
•	•	•	•	Oxford White/Black
•	•	•	•	Silver Clearcoat Metallic/Black

\*This special finish is achieved by applying two coats of highly pigmented low gloss polyester enamel over the primer. Then, final "clear" coats of acrylic enamel are applied for a deep, glossy finish.

Some of these paint and trim colors are shown in this catalog. On the printed page, of course, colors are at best only representative of the originals. Your Ford Dealer can show you actual samples of the paint colors and trim materials presented above as well as Two-Tone Paint with Tape Stripe combinations.

# Safety Features

## A commitment to safety

Safety, like quality, begins as an attitude, a way of thinking that's fundamental in shaping a vehicle's structure and components from the drawing board to assembly.

## Occupant safety

Ford commits enormous resources every year to the development and testing of all car lines and their occupant protection features.

Body structures are carefully designed from the start with passenger safety as a primary concern. After they are validated for theoretical soundness, structures are assembled into prototype vehicles and subjected to exhaustive crash testing.

## Operating safety

This term applies to a vehicle's ability, with the aid of the driver, to avoid an accident.

Ford cars are engineered to do their part — provide suspension and steering systems designed for control, as well as a brake system designed to provide fast stopping action and fade resistance.

Of course, it's up to the driver to make the best use of the vehicle's accident-avoidance equipment. This involves driving defensively, reacting in time, and such seemingly small things as properly regulating the ventilation system (to help the driver stay alert).

## 5-mile-an-hour bumpers

Bumpers on Ford EXP are designed to protect lamps, cooling system, exhaust and other body components in the event of a minor impact. While some manufacturers have replaced the 5-mile-an-hour bumper system with a 2½-mile-an-hour system, Ford offers you the protection of 5-mile-an-hour bumpers front and rear.

## Get it together — buckle up.

Ford Motor Company strongly encourages all passengers to use their safety belts.

In all Ford cars, outboard front seat lap and shoulder belts have automatic retractors and comfort regulators. Outboard rear seat positions also have lap belts with retractors.

Ford urges the use of child and infant restraints, even in states where they are not required by law. Ford's easy-to-install Tot-Guard (for children 20 to 50 pounds) and Infant Carrier (for children up to 20 pounds)



are available at all Ford Dealers. If a child restraint requires a top-tether, Ford cars provide for attachment of an anchor at each rear outboard seating position and in the right front in the 2-seat EXP.

## Ford EXP Lifeguard Design Safety Features

### Vehicle operation

- Safety rim wheels and load-rated tires
- Split diagonal service hydraulic brake system with warning light
- Corrosion-resistant brake lines
- Flash-to-pass headlamps
- Turn indicator lever with lane-changing signal feature
- Hazard warning flasher
- Backup lights
- Side marker lights
- Parking lights coupled with headlamps
- Two-speed or variable speed windshield wipers
- Windshield washers
- Outside rearview mirror, driver's side
- Glare-reduced instrument panel, windshield wiper arms and windshield pillars
- Uniform transaxle shift quadrant with safety starting switch (on all cars equipped with optional automatic transaxle)
- Continuously variable control illumination intensity (instrument cluster lighting)
- Safety hood latch system
- Function-rated windshield defroster system

### Occupant protection

- Safety-designed front end structure
- Safety-designed roof structure
- Steel guard rails in side doors
- Double yoke safety door latches and safety hinges
- Integral lap and shoulder belts with automatic retractors
- Positive seat belt fastening reminder warning light and buzzer for the driver's seat
- Energy-absorbing steering column and steering wheel
- Energy-absorbing armrests and safety-designed door handles
- Energy-absorbing instrument panel with padding for passenger
- Energy-absorbing sun visors
- Self-locking seat back latches
- Head restraints
- Safety glove box latch
- Inside yieldaway rearview mirror
- Impact-absorbing laminated safety glass windshield
- Flame-resistant interior materials
- Safety-designed coat hooks
- Safety-designed radio control knobs and push buttons

### Anti-theft

- Locking steering column with key warning buzzer reminder (with "Park" interlock or push button for key release)
- Visible vehicle identification number
- Single key with anti-theft design for door entry and ignition

### Damage resistance

- Impact-resistant front and rear bumper systems

# Owner Information

## Measurements

	2-Door Coupe
Wheelbase	94.2"
Length	170.3"
Height	50.5"
Width	65.9"
Front tread	54.7"
Rear tread	56.0"
Cargo capacity (cu. ft.)	31.5
Fuel capacity (gal.)	13.0
Curb weight (lb.)	2,192
Passengers	2



As part of Ford Motor Company's commitment to your total satisfaction, participating Ford Dealers offer the Free Lifetime Service Guarantee. They stand behind their work, in writing, for as long as you own your car. This guarantee covers virtually every repair you pay for after your new vehicle warranty expires. Now when you pay for a covered repair once, you never have to pay for the same repair again. Ever. The dealer who did the work will fix it free. Free parts. Free labor.

While it doesn't cover routine maintenance parts, belts, hoses, sheet metal or upholstery, this limited warranty does cover thousands of parts in normal use.

No other car company's dealers, foreign or domestic, offer this kind of security. Nobody.

See your participating Ford Dealer for details.



Ford Motor Company's optional Extended Service Plan covers major components on new Ford cars and light trucks for longer than the vehicle's basic warranty. The cost is so moderate for the protection you get that it could pay for itself the first time you need it. Your Ford Dealer will be happy to detail the plan for you. Available on all cars and most light trucks, it is honored by more than 6,100 Ford and Lincoln-Mercury dealers nationwide and in Canada.

## Motorcraft

### QUALITY REPLACEMENT PARTS FROM FORD

Genuine Ford and Motorcraft original equipment replacement parts are precision engineered and manufactured to Ford specifications to deliver top-level performance in all Ford-built cars and trucks. The Ford and Motorcraft brand names are your best assurance of quality and long-term satisfaction because these replacement parts meet the same high standards as those installed in production, and at Ford, "Quality is Job 1."

### Scheduled maintenance

Ford wants to reduce the frequency and cost of scheduled maintenance on its cars to an absolute minimum. Here are some examples of scheduled maintenance intervals for the 1985 Ford EXP.

For complete maintenance recommendations, refer to the EXP Owner Guide.

HO engine oil change	.....	each 7,500 miles
Turbo engine	.....	each 5,000 miles
HO engine spark plug change	.....	each 30,000 miles
Turbo engine	.....	each 15,000 miles
Air filter replacement	.....	each 30,000 miles
Engine coolant replacement	.....	each 30,000 miles or 3 years

### The commitment to quality by Ford and its dealers can save you money on repairs, too.

In addition to the Lifetime Service Guarantee, the Extended Service Plan and Ford and Motorcraft original equipment parts already described, Ford and Ford Dealers are working in other ways to save you money on repairs and help ensure your satisfaction.

### Nationwide dealer network ready to assist you

Should your Ford car or truck need repair while you're traveling or away from home, the nearest servicing dealer can be located simply by calling one of the toll-free numbers listed under "Ford-paid repair programs."

### Specialized tools and equipment

The latest in diagnostic and service equipment designed especially for use in the repair of Ford Motor Company products is available. This equipment helps the technician make the repair properly so you won't have to come back a second time.

### Continued service technician training

Dealership technicians are continuously updated on the latest techniques and procedures to help them keep your Ford car or truck running at its best.

### Ford-paid repair programs after the warranty period

Sometimes Ford offers adjustment programs to pay all or part of the cost of certain repairs. These programs are intended to assist owners and are in addition to the warranty or to required recalls. Ask Ford or your dealer about such programs relating to your Ford or Lincoln-Mercury vehicle.

To get copies of any adjustment program for your vehicle or the vehicle of interest to you: Call Ford toll-free at 1-800-241-3673. Alaska/Hawaii call 1-800-241-3711 and in Georgia call 1-800-282-0959.

Or write Ford at:

Ford Customer Information System  
Post Office Box 95427  
Atlanta, Georgia 30347

We'll need your name and address; year, make and model vehicle, as well as engine size; and whether you have a manual or automatic transmission.

### Technical service bulletins

All vehicles need repairs during their lifetime. Sometimes Ford issues technical service bulletins (TSBs) and easy-to-read explanations describing unusual engine or transmission conditions which may lead to costly repairs, the recommended repairs, and new repair procedures. Often a repair now can prevent a more serious repair later. Ask Ford or your dealer for any such TSBs and explanations relating to your Ford or Lincoln-Mercury vehicle.

To get copies of these technical service bulletins and explanations for your vehicle or the vehicle of interest to you: Call Ford toll-free at 1-800-241-3673. Alaska/Hawaii call 1-800-241-3711 and in Georgia call 1-800-282-0959.

Or write Ford at:

Ford Customer Information System  
Post Office Box 95427  
Atlanta, Georgia 30347

We'll need your name and address; year, make and model vehicle, as well as engine size; and whether you have a manual or automatic transmission.

### Options availability

Options shown or described in this catalog are available at extra cost and may be offered only in combination with other options or subject to additional ordering requirements or limitations.

### Product changes

Ford Division reserves the right to change product specifications at any time without incurring obligations.

### "Ask your Ford Dealer"

Following publication of this catalog, certain changes in standard equipment, options, prices and the like, or product delays, may have occurred which would not be included in these pages. Your Ford Dealer is your best source for up-to-date information.

**Have you driven  
a Ford...lately?**



FORD EXP

