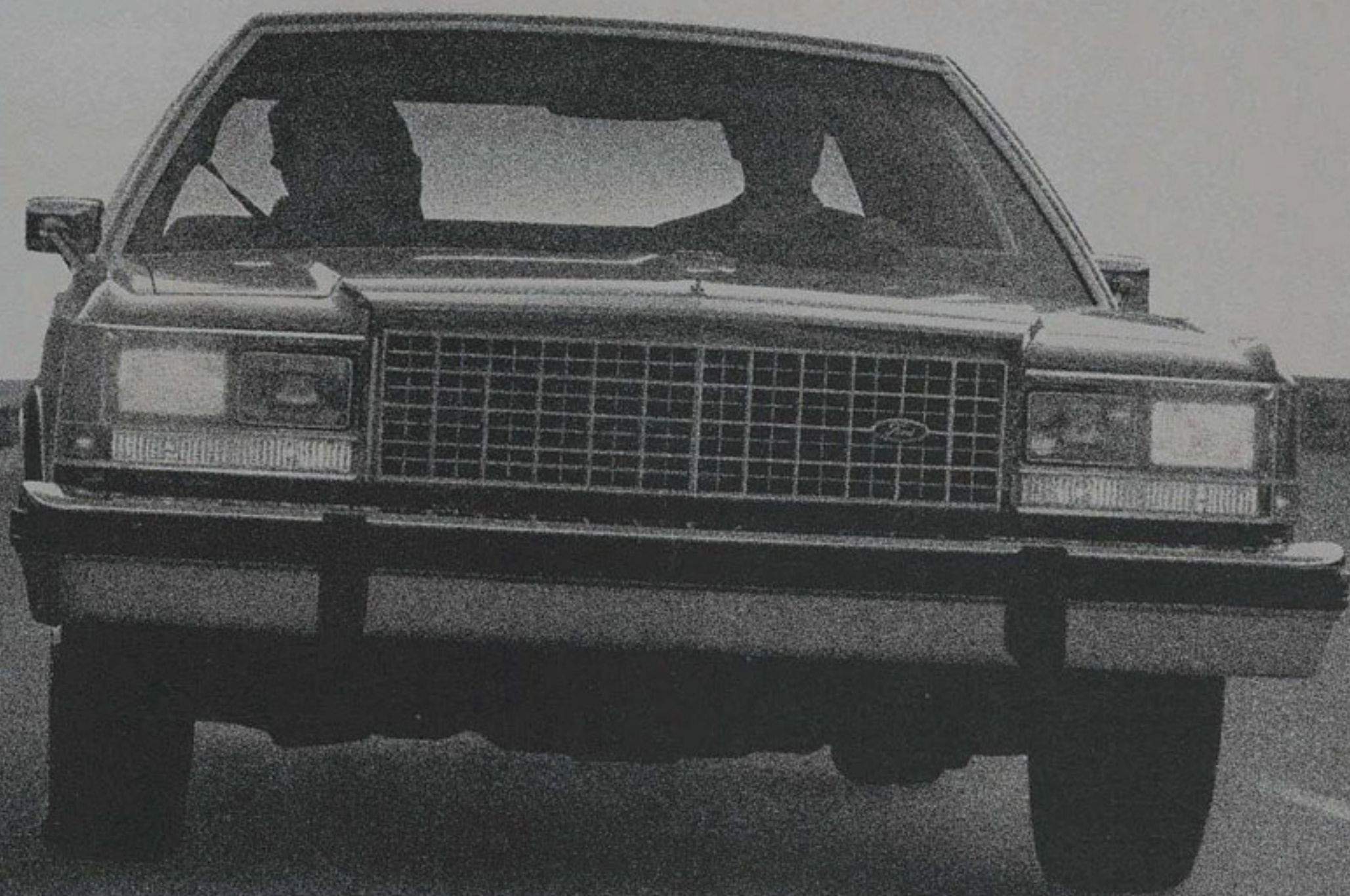


1984 Ford LTD Crown Victoria



At Ford, Quality is Job 1.

At Ford, quality is our top priority. Nothing ranks higher in the design, engineering, manufacture, sale and service of our cars and trucks.

We're determined to make the finest cars and trucks in the world. No exceptions.

Our product philosophy begins with the vision of a customer—of you—sitting behind the wheel of a new car or truck in one of our dealers' showrooms asking a series of questions about quality.

Does this Ford vehicle have the best quality I can find? Will it give me value and pleasure in use? Will it last? Will I get good service? Can I trust the manufacturer and the dealer?

We know that the answers to those questions will determine whether you buy our product or someone else's car or truck. So that's why quality is really Job 1 at Ford.

Our quality system is based on the concept of preventing quality problems, not merely detecting problems and trying to fix them.

Also, we're committed to an operating philosophy of continuous improvement in quality and every other aspect of our business. There is no upper limit to our quality performance. We believe further improvements are always possible.

And most important, Ford employees are directly or indirectly involved in improving the quality of Ford cars and trucks. We know that our jobs and the success of Ford Motor Company depend on building high quality vehicles that meet your needs and expectations.



Donald E. Petersen
President
Ford Motor Company

Ford LTD Crown Victoria Sedans

Ford's full-size sedans are built in the tradition of fine road cars. There's room for six passengers in a luxurious, quiet environment. Plus, plenty of space for luggage in the deep-well trunk. Electronic fuel-injected V-8 power with gas-saving Automatic Overdrive transmission is standard, which means an impressive trailer towing capability of up to 5,000 pounds with the optional Heavy-Duty Trailer Towing Package. All this in a car that's exceptionally smooth over any road. The LTD Crown Victoria 2-door and 4-door sedans for 1984.



Ford LTD Crown Victoria Wagons

The performance, luxury and comfort of the LTD Crown Victoria sedan in two spacious wagons from Ford, America's Wagonmaster. The cargo space Ford has designed into the LTD Crown Victoria is unmatched by other wagon builders. Both the standard model and the classic Country Squire feature the 3-Way Magic Doorgate, a Ford innovation.



A word about this catalog

Some of the equipment shown or described throughout the catalog is available at extra cost.

Table of Contents

Power & Efficiency	4
Quality & Workmanship	5
The Ford LTD Crown	
Victoria Environment	6-7
Ford LTD Crown Victoria Sedans	8-9
Ford LTD Crown Victoria Wagons	10-11
Features, Options & Colors	12-13
Safety Features, Measurements, Powerteam, Scheduled Maintenance & Gas Mileage	14-15

Power & Efficiency

Electronically fuel-injected 5.0 liter V-8 power

The LTD Crown Victoria continues to offer standard V-8 power — an electronic fuel-injected (EFI) 5.0 liter engine teamed with a gas-saving Automatic Overdrive transmission.

The combination of V-8 performance and body-on-frame construction provides a trailer towing weight capability of up to 5,000 pounds with the optional Heavy-Duty Trailer Towing Package — an added benefit of owning a full-size LTD Crown Victoria or Country Squire.

The LTD Crown Victoria's electronic fuel injection system (EFI) delivers a number of important advantages over a conventional carburetor. The major advantage is a more efficient use of fuel, accomplished by the precise high-pressure injection of fuel directly into the induction system. This has the added benefit of reducing evaporative loss. EFI means improved overall operation, smooth running and easier starting in temperature extremes.

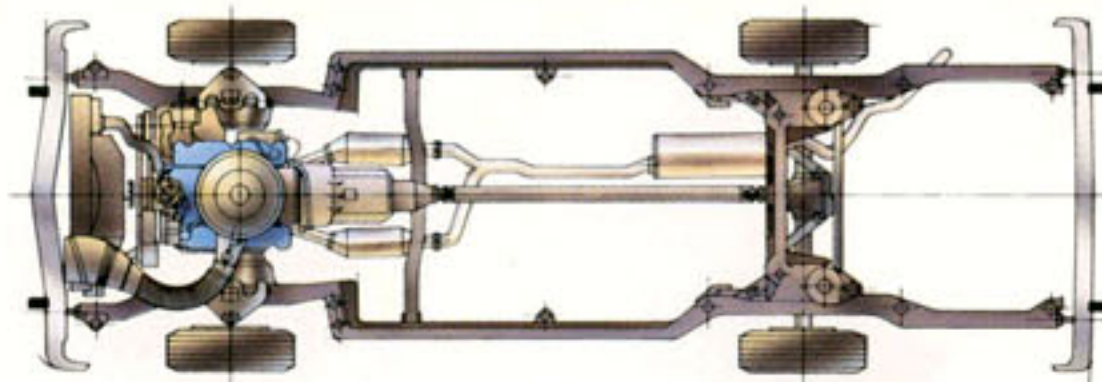


Engine functions are monitored and controlled by the advanced EEC-IV computer.

Automatic Overdrive

The Automatic Overdrive transmission (AOD), a Ford innovation, also plays a key role in LTD Crown Victoria's efficiency. This transmission automatically shifts into an overdrive fourth gear when the vehicle exceeds 45 mph and the driver eases up on the accelerator pedal. In overdrive fourth, engine speed is reduced by one-third. The result is improved highway fuel economy.*

*See Gas Mileage on page 15.



Standard V-8 power, body-on-frame construction, and full coil spring suspension deliver excellent performance and riding comfort.

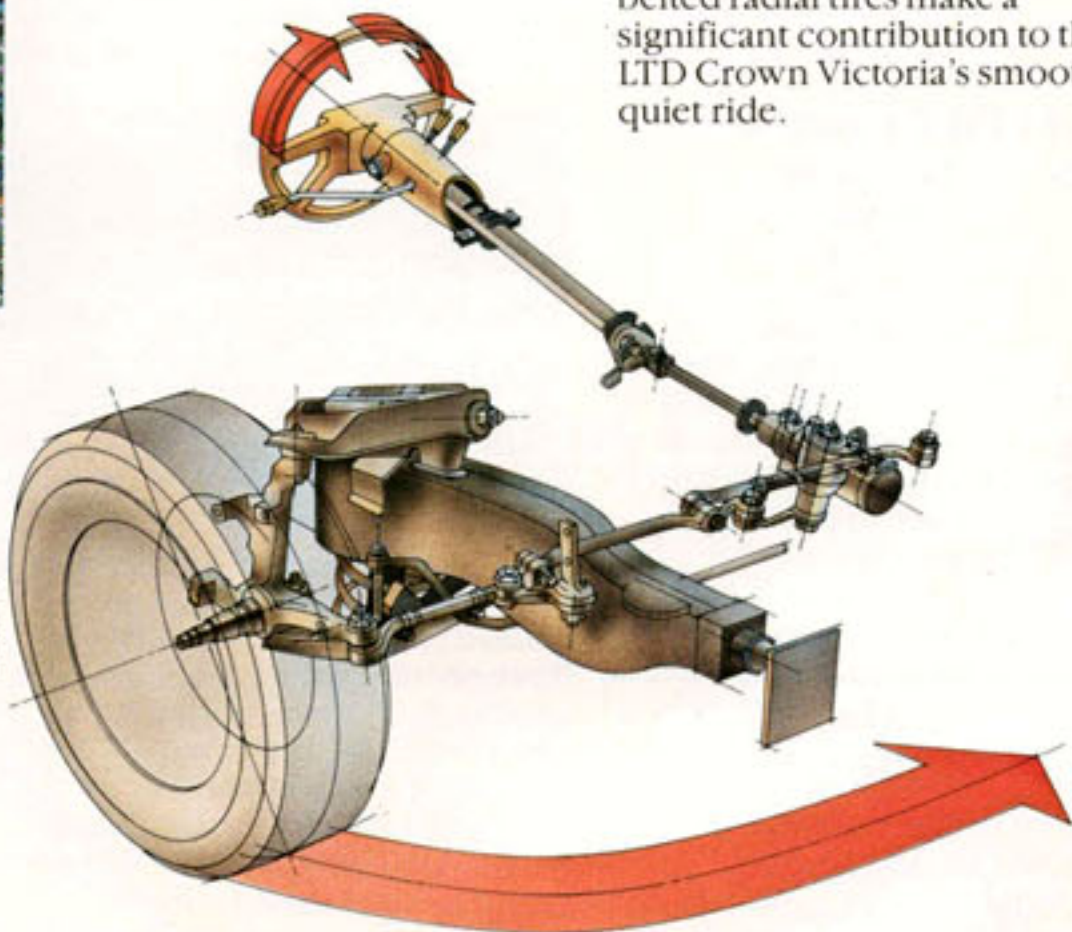
EEC-IV: the world's most advanced onboard automotive computer

The 5.0 liter EFI engine benefits from a computer called EEC-IV, a fourth-generation, state-of-the-art, microprocessor-based engine control system capable of thousands of operations per second. EEC-IV instantly adjusts the air/fuel mixture and ignition timing for quick cold starts. On the road, it senses by the millisecond what the car is being asked to do, then balances the air/fuel mixture and timing for optimum power, response and efficiency.*

Solid frame construction and full coil spring suspension

The frame and suspension systems of the LTD Crown Victoria and Country Squire have been engineered to provide a smooth and quiet ride over a variety of road conditions. With the aid of computers, efficient, lightweight materials have been fashioned into a frame of high structural strength. Eighteen large rubber bushings eliminate frame-to-body contact to reduce road noise and vibration.

The LTD Crown Victoria has a 114.3-in. wheelbase. Computer-selected coil springs and shock absorbers are used in the suspension system. Rubber bushings are also used here to isolate the passenger compartment from vibration and harshness. Standard P-metric steel-belted radial tires make a significant contribution to the LTD Crown Victoria's smooth, quiet ride.



LTD Crown Victoria features the standard convenience of power steering and quick-stopping power front disc/rear drum brakes.

Quality & Workmanship

The best-built American cars.

When we say "Quality is Job 1," we are talking about more than a commitment. We are talking about results. An independent survey concluded Ford makes the best-built American cars. The survey measured owner-reported problems during the first three months of ownership of 1983 cars designed and built in the U.S. The commitment continues in 1984.

A quality-built car like the 1984 LTD Crown Victoria performs to its high design and engineering standards.

The powerteam is designed to deliver ample power and excellent fuel efficiency. The front and rear suspension systems are engineered to balance ride and handling demands. The interior is ergonomically designed for space-efficiency, comfort and convenience.

Aerodynamics and electronics contribute to functional quality as well. And Ford is a recognized world leader in both fields. Aerodynamics helps improve fuel economy and handling stability while reducing wind noise. The EEC-IV microprocessor that monitors and controls engine operation is the world's most advanced onboard automotive computer.



Computer precision from design to assembly

Human ingenuity and computer technology are close partners in the design of Ford cars. Today, engineers are able to study a car's performance on computer screens, and with precision.

Computer graphics techniques like Finite Structural Analysis and Modal Analysis,

for example, allow engineers to construct computerized mathematical models and simulate vehicle and component behavior as if under actual operating conditions.

In manufacturing, computer precision is applied to the designing and machining of tools. In assembly, computers monitor and check engine performance on the line, validate electrical system componentry, and help ensure a more consistent paint application for finish quality.

Robotics and lasers

Ford places great importance on the use of robotics to achieve high quality in manufacturing and assembly. Robots are programmed to provide consistency and control to an extraordinary degree. Robots do exactly what the engineers specify. A car's numerous spot welds, for example, are done quickly, completely, with the accuracy the blueprints demand.

The laser is another advanced-technology tool that improves quality. Lasers provide accurate measurement of everything from engine castings and door margins to nuts and bolts and fasteners. They're also used in critical applications such as welding pins from an engine sensor to wire leads running to the electronic control module.

The ultimate test of quality

Ford cars are road-tested over hundreds of thousands of miles, are subjected to extreme stress and load conditions over paved and unpaved surfaces, up and down steep grades, through corrosive salt baths.

They run the full course of demanding acceleration, cornering and braking maneuvers. Prototypes are also tested under controlled laboratory conditions to verify the quality of each component tested.

Technology provides the means of progress. Dedicated people make it happen.

Quality at Ford is a team effort. Employee Involvement Groups in America alone total more than 1,100. Defect prevention, not merely defect detection, is the primary goal of all quality assurance efforts.

There are "durability reliability" teams specially trained to carry out extensive quality control programs before production begins, and "quality" teams whose primary concern is quality improvement after production gets under way.

From product planning to assembly and beyond, the quality of every Ford car is a continuous concern. It's a commitment to quality that shows in the new LTD Crown Victoria for 1984.

A bumper system that exceeds the requirements

LTD Crown Victoria's bumpers are designed to protect safety-related systems — lamps and exhaust, for example — in the event of a minor impact.

While some cars have replaced the 5-mile-an-hour bumper system with a 2 1/2-mile-an-hour system, LTD Crown Victoria offers you the protection of 5-mile-an-hour bumpers front and rear.

Ford Lifetime Service Guarantee

Participating Ford Dealers are now offering the Lifetime Service Guarantee, which guarantees their work for as long as you own your car. It means that you pay for a covered repair on your Ford car or light truck once — and never again. If it ever has to be fixed again, the repairing dealer will fix it free. Free parts. Free labor. Even if you keep your car a lifetime. It doesn't matter where you bought your car, or whether it's new or used; the work is still covered by the repairing dealer.

This limited warranty covers vehicles in normal use. Items not covered are routine maintenance parts, belts, hoses, sheet metal and upholstery. See any participating Ford Dealer for details.



Interior Luxury Group

The ultimate LTD Crown Victoria has a long list of appearance, comfort and convenience features; many are Interior Luxury Group exclusives.

The split bench seats recline, have seat back map pockets, and are upholstered in crushed velour or SuperSoft vinyl (optional leather

with special sew style shown). The door panels have assist straps, full length armrests, and controls for the power side windows. Floor carpeting is plush, 18-ounce cut-pile. The instrument panel includes additional woodtone appliques. In sedans, the luggage compartment and package tray are carpeted.

The Interior Luxury Group

also features a number of added conveniences: electronic digital clock, trip odometer, low oil level warning light (see next page), and low fuel warning light, a rear seat center armrest in sedans, dual illuminated visor vanity mirrors, automatic parking brake release, plus all the features of the Light Group listed on page 13.

The Ford LTD Crown Victoria Environment

The luxury dimension of LTD Crown Victoria

Few cars built anywhere in the world are as spacious as the Ford LTD Crown Victoria. Inside an LTD Crown Victoria sedan or wagon there's room for six passengers and then some.

Space for cargo is also exceptional. LTD Crown Victoria sedans have a 22.4-cu. ft. deep-well trunk, which holds luggage or groceries in an upright position and has a low lift-over height for easy loading and unloading.

LTD Crown Victoria wagons have an 89.5-cu. ft. cargo volume index with the rear seat folded down, and feature the 3-Way Magic Doorgate with power window, a Ford innovation. It opens like a door with the window up or down, or lowers like a conventional tailgate (1). The wagons also have a 9.9-cu. ft. lockable storage compartment beneath the load floor, plus an additional 2 cu. ft. in a lockable side storage compartment.*

*See Measurements (page 15) for volume differences with Dual Facing Rear Seats.



"Super Luxury" quietness

The LTD Crown Victoria's Super Luxury acoustical insulation creates the quiet riding environment demanded in a full-size American car.

A variety of sound-absorbing materials are designed into virtually every area of the body structure surrounding the passenger compartment to dampen engine and road noise.

Thick rubber insulators are used in the LTD Crown Victoria's solid body-on-frame construction. Seal-on-door weatherstripping surrounds the door openings, providing protection against water leakage and sealing out wind noise.

Designed for maximum comfort

In the LTD Crown Victoria, the doors, seats and roof are designed to provide maximum head, shoulder, hip and leg room. The low hood, cowl and belt lines, narrow roof pillars and large glass areas create a wide field of vision.

Seats have been carefully designed for comfort and firm support. The front seats have steel backs and side rails supporting molded foam cushions. Steel Flex-o-lator mats provide a large surface for cushion support (2). Springs are loaded in tension to eliminate rotation, thus reducing the potential for squeaks (3).

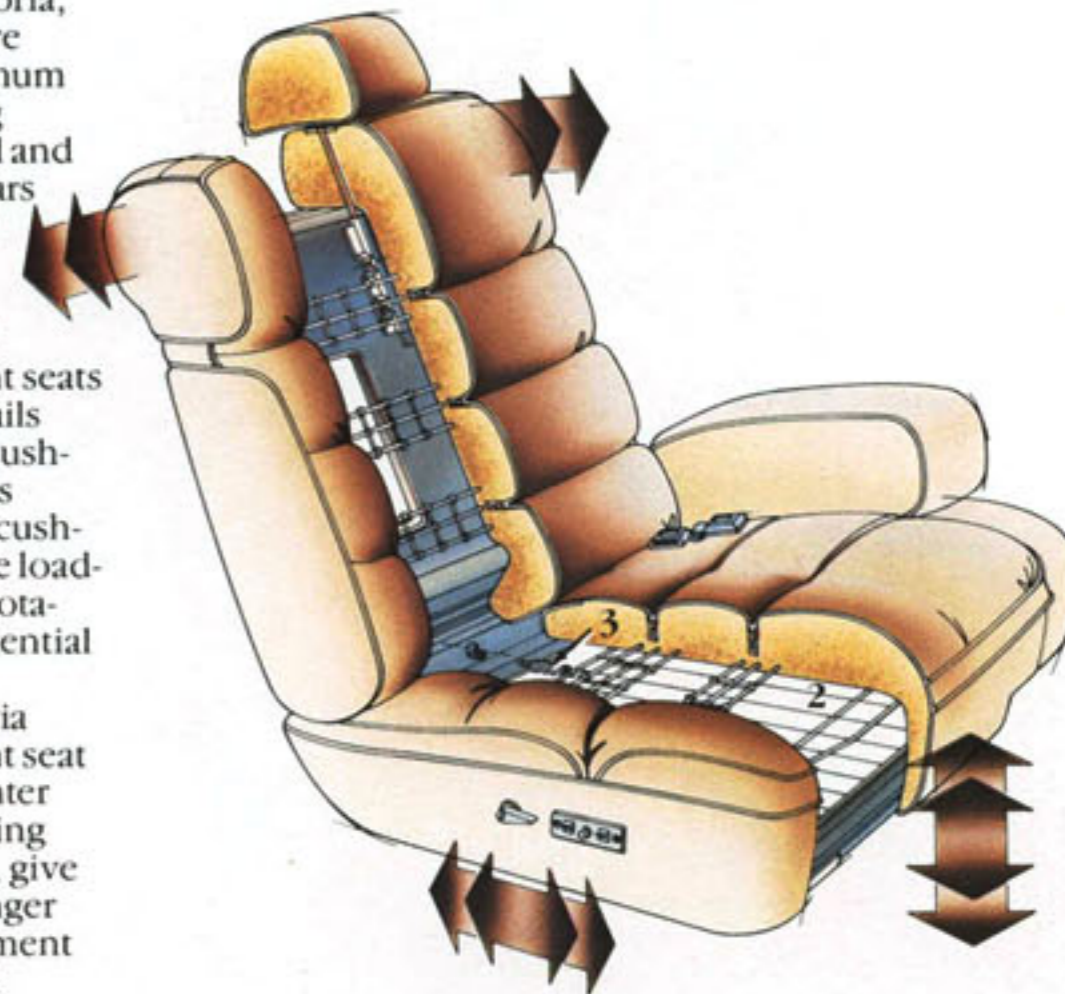
The LTD Crown Victoria features a flight bench front seat with dual recliners and center fold-down armrest. Reclining split bench seats, optional, give the driver and front passenger the freedom of seat adjustment for individual comfort and convenience.

Options for comfort and convenience

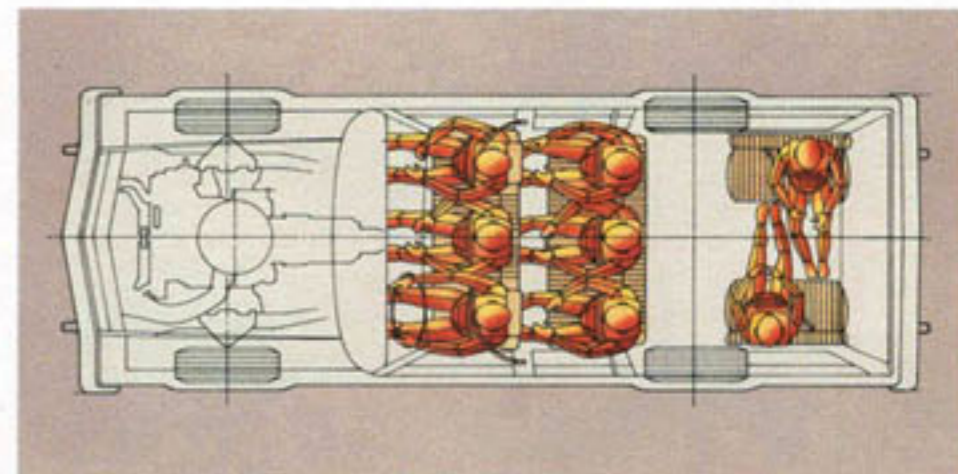
The Autolamp On/Off/Delay System has an electronic sensor that automatically turns the headlamps on at night, off at daylight, and can be set to keep the headlamps on for up to four minutes to light your way into the house.

The Tripminder® Computer provides virtually every kind of information a driver would want for reference. Day of the week, day of the month and time. Trip distance. Trip average speed. Trip average distance per gallon. Instantaneous distance per gallon. Fuel used. English/metric conversion of distance in either miles or kilometers. Fuel in gallons or liters.

Air conditioning is available with either manual or automatic temperature controls. The automatic unit features a new control device that reduces the blower speed as the system approaches the pre-set temperature. Operation is quiet and efficient.



Six-way power seat adjustment is available with flight bench seat or with optional split bench seats (illustrated). Adjust the seat forward/back, up/down, or tilt forward/back.



The LTD Crown Victoria provides full 6-passenger space and comfort. Wagon models can accommodate eight passengers with the optional Dual Facing Rear Seats (illustrated).

The engine oil level warning light is an all-new option for 1984 LTD Crown Victoria owners. A sensor connected to an electronic control module checks the oil level every time the car is started. A light on the instrument panel comes on when the oil is about a quart low. The system is included in the optional Convenience Group and Interior Luxury Group.



Ford LTD Crown Victoria Sedans

Fine cars around the world share one essential quality: They are truly a pleasure to drive. In comfort and convenience they stand apart from all others.

The LTD Crown Victoria has few equals when it comes to providing true six-passenger roominess and quiet riding comfort. V-8 power continues as a standard feature in this top-of-the-line Ford. Acoustical insulation is called Super Luxury.

The LTD Crown Victoria is luxuriously appointed. The flight bench front seat with dual recliners has cloth seating surfaces. AM/FM stereo sound system is standard. Carpeting is thick 16-ounce cut-pile.

Standard also are a left-hand remote-control mirror, quartz sweep-hand clock, and courtesy lights in the ashtray, glove box and in the spacious deep-well trunk. These and many more features—all part of LTD Crown Victoria's full-size measure of luxury and comfort.



The Brougham Roof Treatment featured at left is an elegant new option available on the LTD Crown Victoria 4-Door Sedan. It has a padded full vinyl roof with "frenched" rear window and electroluminescent coach lamps on the center pillars.

LTD Crown Victoria 4 Door Sedan shown with optional Brougham roof treatment, cast aluminum wheels, front cornering lamps, rocker panel moldings, electric rear window defroster, RH remote control mirror, and bumper rub strips.

Ford LTD Crown Victoria Wagons

Ford is "America's Wagonmaster" — and the LTD Crown Victoria is the pride of the Wagonmaster tradition of innovation, spaciousness and comfort.

No other wagon builder can match Crown Victoria's 89.5-cu. ft. cargo volume index (rear seat down). And Ford pioneered the convenience of the 3-Way Magic Doorgate.

LTD Crown Victoria and Country Squire wagons offer all the luxury and comfort of the sedan model. A 5.0 liter electronic fuel-injected V-8 performance. Super Luxury sound insulation surrounds the passenger compartment. And the LTD Crown Victoria has exclusive wagon options: Dual Facing Rear Seats for 8-passenger seating. The extra utility of the roof-mounted Deluxe Luggage Rack. And DuraWeave upholstery (shown below), which looks, feels and breathes like cloth, yet cleans and wears like vinyl.

This year there are two full-size wagon models — the standard LTD Crown Victoria, and Country Squire with woodtone bodyside and doorgate paneling.



10 Country Squire Wagon shown with optional cast aluminum wheels, front cornering lamps, rocker panel moldings, RH remote-control mirror, bumper rub strips, vinyl insert bodyside moldings, electric rear window defroster, and deluxe roof-mounted luggage rack.

Options Availability
1984 Ford LTD Crown Victoria options are not confined to these pages but are shown throughout the catalog. Options, whether or not they are identified, are offered either in combination with other options, or are subject to additional ordering requirements or limitations. Availability of some features described here and elsewhere may be subject to delay.



FORD LTD CROWN VICTORIA FEATURES

ENGINEERING	Sedans	Wagon	Country Squire
5.0 liter (302 CID) electronic fuel-injected V-8	S	S	S
ECC-IV Electronic Engine Controls	S*	S*	S*
Automatic Overdrive transmission	S	S	S
Electronic voltage regulator	S	S	S
DuraSpark electronic ignition	S	S	S
Power steering	S	S	S
Power front disc/rear drum brakes	S	S	S
Full coil spring suspension system	S	S	S
Maintenance-free battery	S	S	S
P215/75R 14" WSW steel-belted radial tires	S	S	S
Concealed windshield wipers with fluidic washer system	S	S	S
Power ventilation system	S	S	S
Tiltaway door hinges	S	S	S
Mini spare tire	S	NA	NA
Conventional spare tire	0	S	S
"Super Luxury" Sound Insulation	S	S	S
EXTERIOR			
Quad rectangular halogen headlamps	S	S	S
Bumper guards, front and rear	S	S	S
LH remote control mirror	S	S	S
Vinyl insert bodyside moldings	S**	S	0
Bright wheelip moldings	S	S	NA
Rocker panel moldings	0	S	0
Hood accent stripes	S	S	S
Bodyside accent stripes	S	S	NA
Decklid accent stripes	S	NA	NA
Wide bright lower door moldings	S	NA	NA
Padded rear half vinyl roof with brushed aluminum wrapover molding (except with optional Brougham Roof Treatment)	S	NA	NA
3-Way Magic Doorgate with power window	NA	S	S
Woodtone bodyside and doorgate paneling	NA	NA	S

INTERIOR	Sedans	Wagon	Country Squire
Flight bench front seat with dual recliners and fold-down center armrest	S	S	S
Cloth seating surfaces	S	0†	0†
All-vinyl upholstery	0	S	S
Deluxe door trim with carpeted lower sections	S	S	S
Automatic inertia seat back releases (2-door)	S	NA	NA
Color-keyed deluxe belts with comfort regulator feature	S	S	S
Seat belt reminder chime	S	S	S
16-ounce luxury cut-pile carpeting	S	S	S
AM/FM stereo radio with four speakers (may be deleted for credit)	S	S	S
Quartz sweep-hand clock	S	S	S
4-spoke luxury steering wheel	S	S	S
Steering column-mounted controls	S	S	S
Courtesy lights in glove box, front ashtray, trunk (sedan), cargo area (wagon)	S	S	S
Rear door courtesy light switches (4-door)	S	S	S
Day/night rearview mirror	S	S	S
Fold-down rear seat	NA	S	S
Removable color-keyed load floor carpet	NA	S	S
Lockable storage compartments in load floor, left rear side panel	NA	S	S

*Except in early production models in California.
**When the optional Tu-Tone Paint/Tape Treatment is ordered, standard moldings are deleted and made optional.
†Available in Interior Luxury Group.

Options shown: (A) Dual Illuminated Visor Vanity Mirrors (B) Tripminder® Computer (C) Electronic Digital Clock (D) Power Side Windows, Power Lock Group (E) 6-Way Power Seat (F) Air Conditioner (G) Electronic AM/FM Stereo Search Radio with Cassette Player and Dolby® Noise Reduction System (H) Pivoting Front Vent Windows (I) Heavy-Duty Trailer Towing Package (J) Wire-Style Wheel Covers (K) Cast Aluminum Wheels (L) Fingertip Speed Control and Leather-Wrapped Luxury Steering Wheel (M) Tot-Guard (available at Ford Dealers)

FORD LTD CROWN VICTORIA OPTIONS

ENTERTAINMENT SYSTEMS	Sedans	Wagon	Country Squire
AM/FM Stereo Radio with Cassette Tape Player	0	0	0
Electronic AM/FM Stereo Search Radio with Cassette Tape Player and Dolby® Noise Reduction System	0	0	0
Premium Sound System* Six speakers and power amplifier	0	0	0
Power Antenna	0	0	0
Note: All stereo systems include dual front and rear speakers.			
APPEARANCE			
Brougham Roof Treatment (4-Door). See pages 8-9.	0	NA	NA
Tu-Tone Paint/Tape Treatment	S	NA	NA
Metallic Glow Paint	0	0	0
Luxury Luggage Compartment Trim	0	NA	NA
Leather-Wrapped Luxury Steering Wheel*	0	0	0
COMFORT AND CONVENIENCE			
Interior Luxury Group. See page 6.	0	0	0
DuraWeave Vinyl Seating Surfaces	NA	0	0
Split Bench Seats	0	0	0
SelectAire Conditioner. Manual or automatic climate control.	0	0	0
Tinted Glass. Recommended with air conditioner.	0	0	0
Dual Facing Rear Seats. With removable seat cushions and rear bumper step pad.	NA	0	0
Convenience Group: Interval windshield wipers, RH visor vanity mirror, Remote control decklid release (sedan), Power doorgate lock (wagons), Trip odometer, Low oil level warning light, Low fuel warning light.	0	0	0
Pivoting Front Vent Windows*	0	0	0
Electronic Digital Clock* With elapsed time/date readouts and stopwatch feature	0	0	0
Electric Rear Window Defroster	0	0	0
Autolamp On/Off/Delay System. See page 7.	0	0	0
Tripminder® Computer. See page 7.	0	0	0
Front Cornering Lamps	0	0	0
Illuminated Entry System	0	0	0
Light Group: Dual beam map light, Headlamps on warning chime, Engine compartment light, Dual instrument panel courtesy lamps.	0	0	0
Fingertip Speed Control	0	0	0
Tilt Steering Wheel	0	0	0
RH Remote Control Convex Mirror	0	0	0
Interval Windshield Wipers	0	0	0
Dual Illuminated Visor Vanity Mirrors	0	0	0
Deluxe Luggage Rack. Air deflector available through Ford Dealers.	NA	0	0
Engine Block Immersion Heater	0	0	0
Automatic Parking Brake Release	0	0	0
PERFORMANCE			
Heavy Duty Trailer Towing Package	0	0	0
Traction Lok Axle	0	0	0
Handling Suspension	0	NA	NA
Heavy Duty Suspension	0	0	0
Heavy Duty Battery	0	0	0
POWER ASSISTS			
6-Way Power Seat	0	0	0
Power Lock Group: Door locks, Remote control decklid release (sedans), Power doorgate lock (wagon).	0	0	0
Power Side Windows	0	0	0
PROTECTION			
Remote Control Locking Fuel Door*	0	0	0
Vinyl Insert Bodyside Moldings. Optional on sedans with Tu-Tone Paint/Tape Treatment.	S	S	0
Rocker Panel Moldings	0	S	0
Lower Bodyside Protection. Vinyl coating under the paint. Includes rocker panel moldings where they are not standard.	0	0	0
Bumper Rub Strips, Front and Rear	0	0	0
TIRES			
P225/75R 14" WSW	0	0	0
P205/75R 15" WSW	0	0	0
P205/75R 15" Puncture Sealant WSW	0	0	0
Conventional Spare Tire	0	S	S
WHEELS/WHEEL COVERS			
Wire-Style Wheel Covers (4)	0	0	0
Locking Wire-Style Wheel Covers (4)	0	0	0
Cast Aluminum Wheels (4)*	0	0	0

*Some options are offered either in combination with other options, or are subject to additional ordering requirements or limitations.

COLORS AND TRIMS

Interior Trim Colors	Interior Trim Colors					Exterior Paint Colors
	Oxford Grey**	Canyon Red	Midnight Blue	Walnut	Vanilla	
	•	•	•	•	•	Black
	•	•	•	•	•	Oxford White
	•	•	•	•	•	Med. Charcoal Met.
	•	•	•	•	•	Silver Met.
	•	•	•	•	•	Midnight Canyon Red Met.
	•	•	•	•	•	Midnight Blue Met.
	•	•	•	•	•	Dark Walnut Met.
	•	•	•	•	•	Pastel Vanilla Vanilla Met.
	•	•	•	•	•	Light Desert Tan
	•	•	•	•	•	Med. Canyon Red Glow**
	•	•	•	•	•	Medium Blue Glow**
	•	•	•	•	•	Desert Tan Glow**
	•	•	•	•	•	Tu-Tone Colors
	•	•	•	•	•	Med. Canyon Red Glow**/Midnight Canyon Red Met.
	•	•	•	•	•	Midnight Blue Met./Medium Blue Glow**
	•	•	•	•	•	Pastel Vanilla/Vanilla Met.
	•	•	•	•	•	Silver Met./Med. Charcoal Met.

*Sedan models only.
**Optional Metallic Glow colors.

Some of these paint and trim colors are shown in this catalog. On the printed page, of course, colors are at best only representative of the originals. Your Ford Dealer can show you actual samples of the paint colors and trim materials presented above as well as Tu-Tone Paint/Tape combinations. See him for available Tu-Tone paint schemes.

Vinyl Roof Colors: Black, Oxford White, Light Desert Tan, Pastel Vanilla, Canyon Red, Light Grey, Midnight Blue, Walnut.

Black	Pastel Vanilla
Oxford White	Vanilla Metallic
Medium Charcoal Metallic	Light Desert Tan
Silver Metallic	Medium Canyon Red Glow**
Midnight Canyon Red Metallic	Medium Blue Glow**
Midnight Blue Metallic	Desert Tan Glow**
Dark Walnut Metallic	

A Commitment to Safety

Cars built with a concern for safety are designed and engineered by people who are committed to safety. Safety, like quality, begins as an attitude, a way of thinking that's instrumental in the shaping of a vehicle's structure and components from the drawing board to assembly.



Occupant safety

To help protect passengers in the event of an accident, Ford cars are equipped with numerous safety-design features, including those listed under the category "Occupant protection."

Ford commits enormous resources every year to the development and testing of all car lines and their occupant protection features.

Body structures — front and rear end assemblies, roof and doors — are carefully designed from the start with passenger safety as a primary concern. After they are validated for theoretical soundness, structures are assembled into prototype vehicles and subjected to exhaustive testing in the Crash Barrier Building at Ford's Dearborn, Michigan, Proving Ground.

Thorough evaluations of instrument panel and steering column designs, seats, head restraints and seat belts are also involved in all phases of safety testing.

The Crash Barrier Building has highly sophisticated equipment designed to analyze the impact of crash testing on the prototypes, and to measure the effects of the force on mannequins representing the driver and passengers. As many as 350 crash tests involving cars and trucks are conducted annually.

Operating safety

This term applies to a vehicle's ability, with the aid of the driver, to avoid an accident.

Most important to operating safety are the major chassis systems — the front and rear suspensions, steering and brakes. The performance of these systems is vital to accident avoidance should the driver have to take evasive maneuvers in an emergency.

Ford cars are engineered to do their part — provide suspension and steering systems designed for handling responsiveness and control, as well as a brake system that delivers fast stopping action along with fade resistance.

Of course, it's up to the driver to make the best use of the vehicle's accident-avoidance equipment. This involves driving defensively and reacting in time, and such seemingly small things as regulating the interior heating/cooling system for proper ventilation (to help the driver stay alert) and maintaining the steel-belted radial tires at recommended inflation pressures (to keep them at safe temperatures).

Get it together — Buckle up.

Ford Motor Company strongly encourages all passengers to use their safety belts.

In all Ford cars, front seat lap and shoulder belts are equipped with automatic retractors and tension relievers, so they're very convenient to put on and comfortable to wear. Rear seat positions also have lap belts with retractors.

Ford also urges the use of child and infant restraints, even in states where they are not required by law. Ford's Tot-Guard (for children 20 to 50 pounds) and Infant Carrier (for children up to 20 pounds) are available at all Ford Dealers. These restraint systems are easy to install and meet all state and federal standards. If a child restraint requires a top-tether, Ford cars provide a special anchorage at each rear outboard seating position.

Ford LTD Crown Victoria Lifeguard Design Safety Features Vehicle operation

Safety rim wheels and load-rated tires Split service hydraulic brake system with warning light

- Corrosion-resistant brake lines
- Turn indicator lever with lane-changing signal feature
- Hazard warning flasher
- Back-up lights
- Side marker lights
- Parking lights coupled with headlamps
- Two-speed or variable speed windshield wipers
- Windshield washers
- Outside rearview mirror, driver's side
- Glare reduced instrument panel, windshield wiper arms, and windshield pillars
- Uniform automatic transmission shift quadrant with safety starting switch
- Continuously variable control-illumination intensity (instrument panel lighting)
- Safety hood latch system
- Function-rated windshield defroster system
- Impact-resistant front and rear bumper systems

Occupant protection

- Safety-designed front end structure
- Safety-designed roof structure
- Steel guard rails in side doors
- Double yoke safety door latches and safety hinges
- Integral lap and shoulder belts with automatic retractors for front outboard occupants
- Positive seat belt fastening reminder warning light and chime for the driver
- Lap belts for center front passenger and all rear seating positions with retractors for rear outboard occupants
- Energy-absorbing steering column and steering wheel
- Energy-absorbing armrests and safety-designed door handles
- Energy-absorbing instrument panel with padding for right and center front passengers
- Energy-absorbing sun visors
- Energy-absorbing front seat back tops
- Self-locking front seat back latches on two-door vehicles
- Head restraints for front outboard occupants
- Safety glove box latch
- Inside yieldaway rearview mirror
- Impact-absorbing laminated safety glass windshield
- Flame-resistant interior materials
- Safety-designed coat hooks
- Safety-designed radio control knobs and push buttons
- Child restraint tether anchorages

Anti-theft

- Locking steering column with key warning buzzer reminder (with "Park" interlock or push button for key release)
- Visible vehicle identification number
- Separate keys for ignition and door entry

Ford-Paid Repair Programs After The Warranty Period

Sometimes Ford offers adjustment programs to pay all or part of the cost of certain repairs. These programs are intended to assist owners and are in addition to the warranty or to required recalls. Ask Ford or your dealer about such

programs relating to your Ford or Lincoln-Mercury vehicle.

To get copies of any adjustment program for your vehicle or the vehicle of interest to you: Call Ford toll-free at 1-800-241-3673. Alaska and Hawaii call 1-800-241-3711 and in Georgia call 1-800-282-0959.

Or write Ford at:

Ford Customer Information System
P.O. Box 95427
Atlanta, Georgia 30347.

We'll need your name and address; year, make and model vehicle, as well as engine size; and whether you have a manual or automatic transmission.

Technical Service Bulletins

All vehicles need repairs during their lifetime. Sometimes Ford issues Technical Service Bulletins (TSBs) and easy-to-read explanations describing unusual engine or transmission conditions which may lead to costly repairs, the recommended repairs, and new repair procedures. Often a repair now can prevent a more serious repair later. Ask Ford or your dealer for any such TSBs and explanations relating to your Ford or Lincoln-Mercury vehicle.

To get copies of these Technical Service Bulletins and explanations for your vehicle or the vehicle of interest to you: Call Ford toll-free at 1-800-241-3673. Alaska and Hawaii call 1-800-241-3711 and in Georgia call 1-800-282-0959.

Or write Ford at:

Ford Customer Information System
P.O. Box 95427
Atlanta, Georgia 30347.

We'll need your name and address; year, make and model vehicle, as well as engine size; and whether you have a manual or automatic transmission.

Also well worth considering...



Ford Motor Company's optional Extended Service Plan covers major components on new Ford cars and light trucks for longer than the vehicle's basic warranty. The cost is so moderate for the protection you get that it could pay for itself the first time you need it. Your Ford Dealer will be happy to detail the plan for you. Available on all cars and light trucks, it is honored by more than 6,300 Ford and Lincoln-Mercury dealers nationwide and in Canada.



MEASUREMENTS	2-Dr.	4-Dr.	Wagon
Wheelbase	114.3"	114.3"	114.3"
Overall Length	211.0"	211.0"	215.0"
Overall Height	55.3"	55.3"	56.8"
Overall Width	77.5"	77.5"	79.3"
Tread:			
Front	62.2"	62.2"	62.2"
Rear	62.0"	62.0"	62.0"
Trunk or Cargo Space (cu. ft.)	22.4*	22.4*	89.5**
Fuel Capacity (gal.)	18.0	18.0	18.5
Curb Weight (lb.)	3,689	3,730	3,936
Passenger Capacity	6	6	6+

*With spare tire.
**Plus 9.9 cu. ft. in a lockable storage compartment below the load floor (5.7 cu. ft. with dual facing rear seats, 7.7 cu. ft. with quick-release cushions removed) and 2.0 cu. ft. in a lockable side storage compartment.
+ Eight with optional dual facing rear seats.

LTD CROWN VICTORIA POWERTEAM

Engine	Transmission	Final Drive Ratios	
		Standard	Optional
5.0 liter EFI V8	Automatic Overdrive	3.08	3.55*

*Available with optional Traction-Lok axle, Heavy Duty Trailer Towing Package, and High Altitude Emissions System.

SCHEDULED MAINTENANCE

Ford wants to reduce the frequency and cost of scheduled maintenance on its cars to an absolute minimum. Here are some examples of scheduled maintenance for the new Ford LTD Crown Victoria. For complete maintenance recommendations, refer to the Ford Owner Guide.

Engine Oil Change	each	7,500 miles
Spark Plug Change	each	30,000 miles
Air Filter Replacement	each	30,000 miles
Engine Coolant Replacement	each	52,500 miles or 3 years

Gas Mileage

1984 EPA mileage estimates were not available at the time this catalog was approved for printing. However, the new Ford LTD Crown Victoria and Country Squire are expected to post excellent mileage ratings. As soon as EPA figures are released, your Ford Dealer will be among the first to receive this information and will be happy to pass it along to you.

"Ask Your Ford Dealer"

Following publication of this catalog, certain changes in standard equipment, options, prices and the like may have occurred which would not be included in these pages. Your Ford Dealer is your best source for up-to-date information.

Product Changes

Ford Division reserves the right to change product specifications at any time without incurring obligations.

Have you driven a Ford...lately?



Get it together — Buckle up.

016 — Ann. 8/85 Litho in U.S.A.

FORD LTD
CROWN VICTORIA

FORD DIVISION

