

LINCOLN



Presenting the luxurious Lincoln for 1982.

The Lincoln legend. Sixty-one years of elegance and luxury. Providing outstanding comfort and relaxing room. A quiet, stately ride. And a commitment to quality.

With the Lincoln for 1982, the legend lives on. Proud of its past. Responsive to the present.

From its bold grille to its handsome roof line and distinctive decklid, Lincoln makes a statement of elegance.

This grand manner carries

through when you open the door. A quiet world of gracious room awaits you and your passengers. With tailored, rich, luxurious seating. And generous space that extends to the huge luggage compartment.

Take the wheel and enjoy the smooth, stately Lincoln ride. Luxurious. Quiet. In the grand Lincoln manner.

But for all its proud heritage, part of the Lincoln tradition is to respond to the needs of its time. The new Lincoln offers high levels of contemporary electronic technology, such as its optional Electronic Instrument Panel with Message Center.

And under the hood is a standard 5.0 Liter (302 CID) V-8 engine. Electronic Fuel Injection and Electronic Engine Controls meter fuel with precision, contributing to Lincoln's overall performance and fuel economy.* The engine is teamed with the innovative Automatic Overdrive Transmission that employs an overdrive fourth gear that engages at around 40 miles per hour to reduce engine revolutions and highway fuel consumption.

For your added reassurance, Lincoln incorporates a computerized Self-Diagnostic System to provide faster, more accurate, and

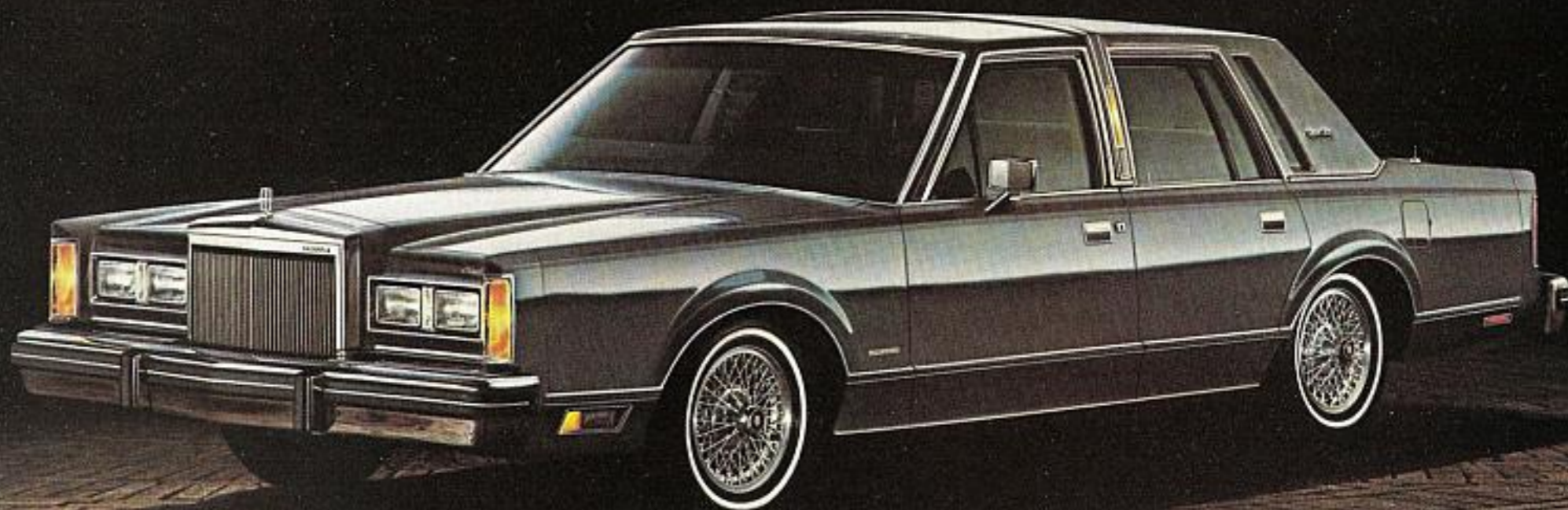
more efficient servicing than before. (See page 13 for details.)

This year, experience the Lincoln legend for yourself. Select from the Lincoln Cartier Designer Series, the distinctly personal Lincoln Signature Series, and the luxurious Lincoln Town Car.

Lincoln for 1982. Rich in tradition. Responsive to the needs of today.

Some of the equipment shown may be available only at extra cost and only on specific models. Please see pages 10 and 11 for specific information regarding standard and optional equipment.

*1982 EPA estimates were not available at the time this catalog was published. Lincoln, however, should post in the new EPA Gas Mileage Guide excellent miles-per-gallon ratings. See your Lincoln-Mercury Dealer for the latest information.



The 1982 Lincoln Signature Series in Medium Dark Pewter Metallic with color-keyed coach roof and optional wire spoke aluminum wheels.



The 1982 Lincoln Cartier Designer Series in Light Pewter over Opal with color-keyed full-vinyl roof and turbine spoke aluminum wheels.

A unique statement in Light Pewter and Opal . . . pure elegance. The Lincoln Cartier Designer Series. Touched by all the elegance evoked by the name "Cartier."

The Cartier design begins with

the proud Lincoln profile. The selection: the Light Pewter Valino grain full-vinyl roof. A rich beginning. Followed by the Dual-Shade body in Light Pewter over Opal. Striking. Accented with a single Red stripe

around the bodyside. Enhanced by the distinguished Cartier logo in the rear quarter window. And completed by the elegant styling of turbine spoke aluminum wheels.

Savor the smoothness of its ride.

And its overall commitment to quality.

Here is a marvelous driving machine. Designed by Lincoln. Dramatized by the Cartier touch. Pure elegance.



Extraordinary elegance in luxurious Opal leather.

The Lincoln interior. Roomy and rich-looking. And with the Cartier influence . . . exquisite!

Pewter colored carpeting creates a mood of elegance. Heightened by Twin Comfort Lounge

seats, shown here, with Opal leather seating surfaces, inset with Light Pewter Laurent cloth. Or select Opal leather seating surfaces, inset with Light Pewter leather. A variation on the same elegant theme.

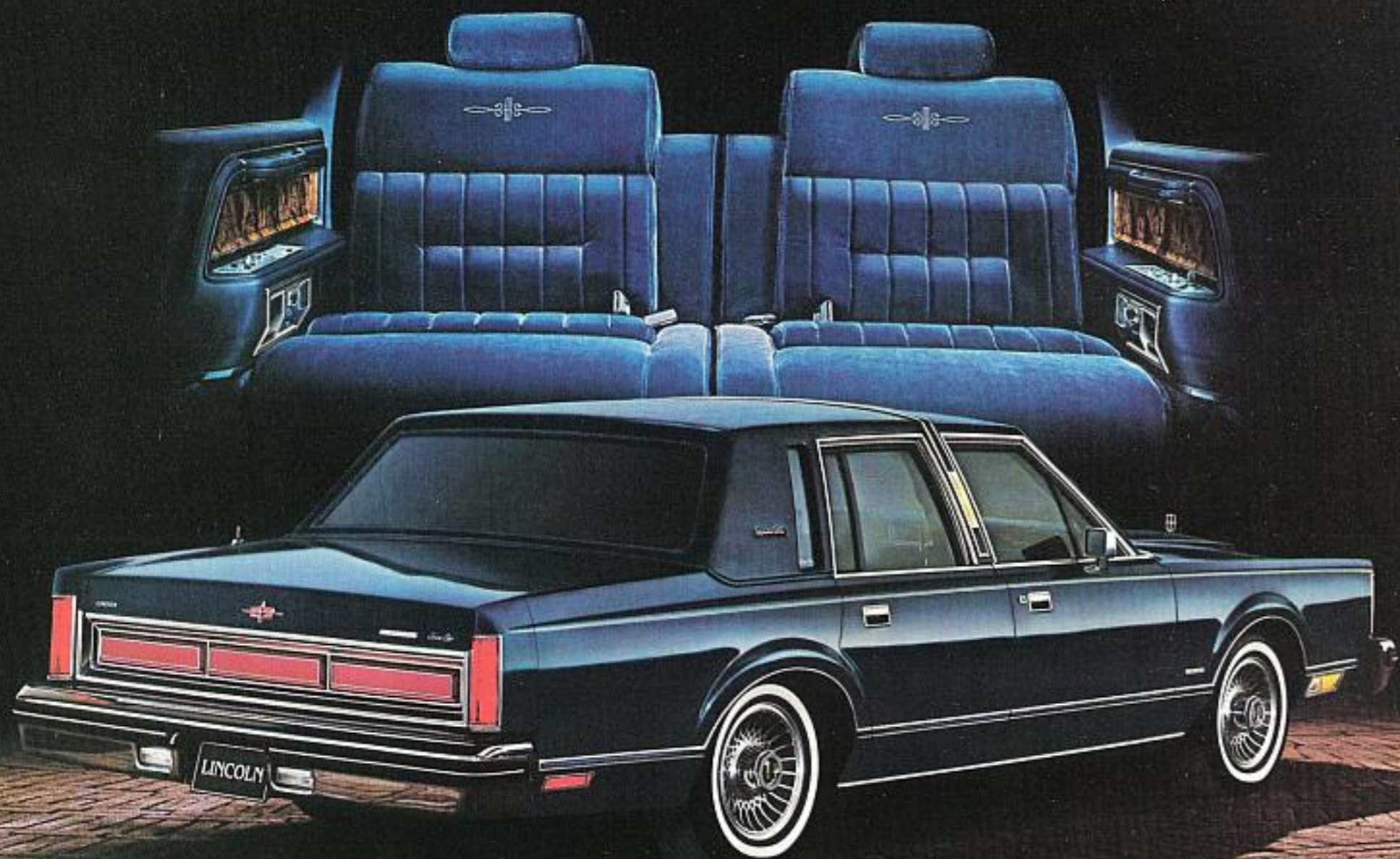
The Twin Comfort Lounge seats comfortably support you. And

six-way/six-way power adjustment allows you and your front seat passenger to adjust the seating to a position that suits each of you best. Fold-down armrests — front and rear — help assure the complete comfort of your passengers. And the distinctive Cartier logo on the instru-

ment panel denotes the special quality of this luxuriously appointed automobile.

The Lincoln Cartier Designer Series for 1982. Extraordinary elegance.

S I G N A T U R E



The 1982 Lincoln Signature Series in Dark Blue Metallic with color-keyed coach roof and optional lace spoke aluminum wheels.

Styled for personalized prestige . . . rich and refined.

The grandeur of Lincoln. Expressed in the highly personalized Lincoln Signature Series. A masterfully executed four-door.

The splendid silhouette delineates Lincoln's classic design. Enhanced by the custom look of the fine grain vinyl coach roof. And

smartly touched by the prestigious Signature Series Script on the rear-quarter pillar.

Once inside, a world of incredible space and richness awaits you. Richness, shown above, in Blue Shubert cloth, covering the six-way/ six-way power Twin Comfort Lounge seats with manual passenger recliner.

Rear-seat passengers will be comforted by the fold-down armrest, seatback assist straps, and handy map pockets.

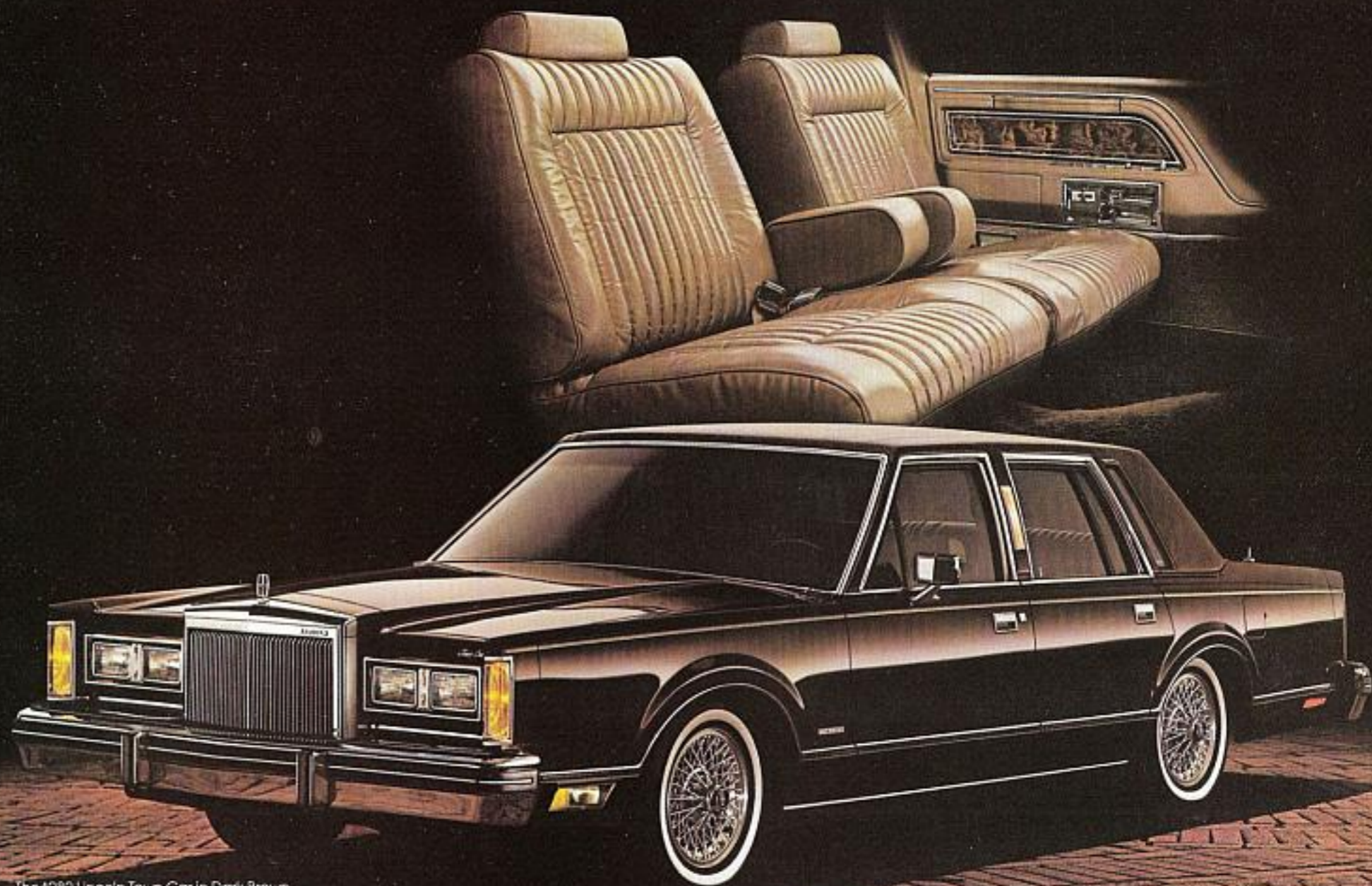
Signature luxury extends to the standard 22.4 cubic feet of trunk space. Generous in size and fully trimmed with nine-ounce carpeting.

You may decide to further personalize your Signature with one or

more irresistible options, including the four-spoke luxury tilt-steering wheel, the Keyless Entry System with Illuminated Entry, or the Electronic Instrument Panel with Message Center. (See Page 11 for complete details and full list of options.)

Whatever your tastes dictate, your Lincoln Signature Series will accommodate them handsomely.

L I N C O L N
T O W N C A R



The 1982 Lincoln Town Car in Dark Brown Metallic with color-keyed full-vinyl roof and optional wire spoke aluminum wheels.

Styled for traditional luxury . . . graceful and grand.

The Lincoln Town Car. Its fluid lines gracefully state the Lincoln commitment to luxury, shown here, in Dark Brown Metallic.

Discover its advanced electronic technology. Achieving levels of distinction, evident in the optional

Electronic Instrument Panel with Message Center.

Appreciate its generous interior room. The ample space of a four-door. With complete comfort surrounding you. From the six-way power Twin Comfort Lounge seats, shown above, with optional Medium Fawn leather seating surfaces, to the

fine plushness of rich-cut carpeting.

Luxury is apparent in the color-keyed four-spoke luxury steering wheel, full-length door armrests, and Electronic AM/FM Stereo Search radio with four speakers. And there is a host of other fine standard features as well, such as the remote-control decklid, power door locks, auto-

matic parking brake release, and Automatic Temperature Control air conditioning.

Enjoy its superb ride. Quiet and smooth. Stately and luxurious.

Lincoln Town Car. Comfortable on stylish boulevards and scenic country back roads. Respected for its qualities. Renowned for its richness.



1

Lincoln Standard Features

Your 1982 Lincoln comes equipped with many attractive standard features.

Standard Interior Features

- Twin Comfort Lounge seats with six-way power driver's seat and dual fold-down armrests
- Chalet cloth covered headlining
- Soft-feel interior door moldings
- Retractable coat hooks
- Cloth seat trim
- Rear-seat fold-down center armrest
- Full-length door armrests
- Four-spoke, color-keyed luxury steering wheel
- Door pull straps
- Door courtesy lights and integral reflectors (front doors)
- Instrument panel with three-pod, black-faced instrument cluster, and trip odometer
- Deluxe color-keyed seat belts
- Full-length door scuff plates with Surlyn inserts
- 18-ounce cut-pile carpeting
- Lower door carpeting
- Full luggage compartment trim with spare-tire cover
- Roof rail assist handles
- Dual-beam map/dome light
- 12 inch day/night rearview mirror
- Rosewood woodtone instrument panel and door trim appliques

Standard Exterior Features

- Bright rocker panel moldings
- Coach lamps
- Premium bodyside molding
- Lincoln star hood ornament
- Quad-rectangular halogen headlamps
- Front bumper guards and rub strips and rear bumper rub strips
- Valino grain full-vinyl roof
- Automatic overdrive plaque
- Hood and bodyside accent stripes
- Electronic Fuel Injection plaque
- Full wheel covers (4)



2

Standard Functional Features

- 5.0 liter (302 CID) V-8 engine
- Electronic Fuel Injection
- Electronic Engine Controls
- Automatic Overdrive Transmission
- Power steering
- Power brakes, front disc/rear drum
- Power windows and vent windows
- Electronic AM/FM Stereo Search radio with four speakers
- Power antenna
- White sidewall steel-belted radial tires (Michelin)
- Automatic Temperature Control air conditioner/heater
- Tinted glass
- Analog clock
- Dual note horn
- Electronic warning chimes
- Coolant recovery system
- Mini-spare tire
- Cornering lamps
- Engine temperature gauge (in addition to warning light)
- Viscous drive fan
- Fluidic windshield washer system
- Automatic parking brake release
- Heavy-duty battery (54 amp)
- Power door locks
- Remote-control decklid release
- Remote-control left-hand rearview mirror



3



4



5

- Padded center pillar with lower carpeting
- Coach roof with frenched backlite
- Signature Series identification script on rear-quarter pillar

Lincoln Cartier Designer Series

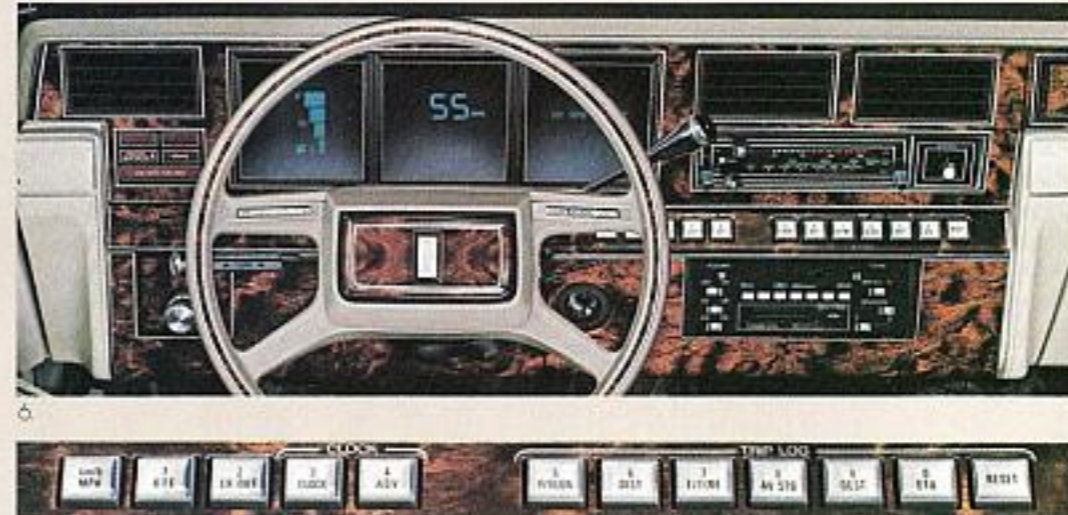
Includes all of the standard Lincoln features, plus the following features:

- Light Pewter upper, Opal lower
- Twin Comfort Lounge seats with six-way/six-way power, dual fold-down armrests, and manual passenger recliner
- Signature Series sew style with: Opal leather seating surfaces with Light Pewter Laurent body cloth in the insert area, or with Light Pewter leather in the insert area
- Opal bodyside molding
- Single Red bodyside accent stripe
- Decklid with Cartier logo in Red tape
- Cartier Designer logo in rear quarter windows
- Wire wheel covers, or the standard full wheel covers
- Cartier Designer logo and identification on instrument panel
- Turbine spoke aluminum wheels (4)

Lincoln Signature Series

Includes all Lincoln standard equipment plus the following features:

- Twin Comfort Lounge seats with six-way/six-way power, dual fold-down armrests, and manual passenger recliner
- Distinctive sew-style seat with Shubert body cloth
- Seatback assist straps and map pockets
- Dual floor well lights
- Nine-ounce needled carpeting in luggage compartment



6



7



8

Lincoln Optional Features

The 1982 Lincoln offers a fine choice of exciting options, including the ones pictured on these two pages.

1. **AUTOMATIC GARAGE DOOR OPENER CONTROL.** Includes integral visor-mounted transmitter and separate receiver that is wired directly to an existing automatic garage door opener system. Requires illuminated visor vanity mirrors.
2. **WHEELS.** Your choices, left to right, are: turbine spoke aluminum wheels (standard on Cartier), lacy spoke aluminum wheels, wire spoke aluminum wheels, wire wheel covers, or the standard full wheel covers.
3. **40-CHANNEL CITIZEN'S BAND RADIO.** Includes detachable microphone with

built-in controls and power tri-band antenna. Available with all radios.

4. POWER GLASS MOONROOF.

Provides an open-air feel on the open road. Sliding back to open and forward to close at the touch of your finger.

5. SPEED CONTROL.

Especially convenient for long trips. Just set the speed you wish to cruise at, sit back, and relax. This system includes "resume" feature for automatic acceleration to the same speed set prior to braking.

6. ELECTRONIC INSTRUMENT PANEL AND MESSAGE CENTER.

The stylish, easy-to-read Electronic Instrument Panel includes electronic digital speedometer, electronic graphic fuel gauge, and month/day/date electronic clock. The Message Center includes trip log, warning messages and instantaneous fuel economy. (See page 13 for further details.)

7. ELECTRONIC AM/FM STEREO SEARCH RADIO.

This unit is available with a cassette tape player that features Dolby® noise reduction system. This improves the sound reproduction of your cassette tape music. Tape controls include locking fast forward and reverse, and automatic and manual tape ejection. This unit is also available with 8-track tape player.



9

8. KEYLESS ENTRY SYSTEM.

Your own personal five-digit code opens the driver's door, passenger's door, and decklid by using buttons just above the driver's door. If you wish, you may use your key instead. This system includes illuminated Entry System. This means that all interior lights go on and a ring around the door lock is illuminated when either front door handle is pulled.

9. TWIN COMFORT LOUNGE SEATS.

Six-way/six-way power adjusts seating to your driving needs and the comfort of your front seat passenger. Includes manual driver and passenger recliner and dual fold-down armrests.

Optional Interior Features

- Six-way/six-way power Twin Comfort Lounge seats with dual fold-down armrests, and manual passenger recliner (standard on Signature Series and Cartier)
- Six-way/six-way power Twin Comfort Lounge seats with dual fold-down armrests and manual driver and passenger recliner
- Floor mats, front and rear
- Leather seating surfaces
- Tilt-steering wheel*
- Dual illuminated visor vanity mirrors
- Premium Sound System with power amplifier and six speakers

Optional Exterior Features

- Moondust paint
- Dual-Shade paint (4 combinations)

- Coach roof with frenched backlite (standard on Signature Series)
- Power remote-control mirror
- P205/75R15 wide white sidewall self-sealing tires (4)

Optional Functional Features

- Illuminated Entry System (included in Keyless Entry System)
- Headlamp convenience group (includes automatic headlamp dimmer and "Auto Lamp" on/off delay system)
- Intermittent windshield wipers
- Conventional spare tire (white sidewall steel-belted radial with wheel)
- Traction-Lok differential (includes conventional spare tire and wheel)
- Defroster Group (includes electric rear window defroster and heated outside left-hand remote-control mirror — mandatory in New York)
- Engine block heater
- Lower bodyside protection
- Right-hand remote-control mirror
- Dual exhaust
- Altitude package

Dolby® is a registered trademark of Dolby Laboratories, Inc.

*This equipment is subject to additional ordering requirements or limitations. Please consult your Dealer for details.

C O L O R C H O I C E S

Beautiful ways to individualize your 1982 Lincoln.

Exterior Colors

A broad spectrum of exterior colors are offered so that you may apply your personal taste and judgment to your 1982 Lincoln. These colors are designed to coordinate with a wide choice of available interior trims and roof treatments. For a more precise presentation of color and trim availabilities, refer to your Dealer's color and upholstery book.

Accent Stripes

Accent stripes are offered in the following eleven colors and are coordinated with exterior paint colors: Black, White, Dark Pewter, Bright Red, Medium Blue, Pastel Sand, Gold, Light Champagne, Dark Champagne, Light Cordovan, and Dark Cordovan. With the optional Dual-Shades, a unique Tu-Tone accent stripe is used in one of these four combinations: Silver Metallic/Dark Red, Light Pewter/Dark Pewter, Light Pewter/Dark Blue, and Medium Fawn/Light Fawn.

Vinyl Roof Colors

You may select from a choice of thirteen vinyl roof colors: Black, White, Light Pewter Metallic, Dark Pewter Metallic, Dark Red Metallic, Medium Blue Metallic, Light Blue Metallic, Wedgewood Blue, Pastel French Vanilla, Light Fawn Metallic, Dark Brown Metallic, Medium Dark Mulberry, and French Vanilla. These same colors are available for the coach roof as well.

Interior Trim

Your Twin Comfort Lounge seats come in cloth or optional leather seating surfaces, in the following five colors: Black, Pewter, Dark Red, Midnight Blue, and Medium Fawn. The Signature Series color choices include all of the above and: French Vanilla, or Mulberry cloth or Opal/Black, Opal/Pewter, Opal/Red, Opal/Blue, Opal/Fawn, and Opal/Mulberry leather.

Standard Exterior Colors



Black



White



Light Pewter



Medium Dark Pewter Metallic*



Dark Blue Metallic*



Pastel French Vanilla

NOTE: Due to occasional printing irregularities, the colors shown may vary from actual hues. Please see your Lincoln-Mercury Dealer for accurate color chips.



Dark Brown Metallic*



Medium Dark Mulberry Metallic*



Wedgewood Blue



Light Pewter Metallic*



Light Fawn Metallic*



Medium Mulberry Metallic*

*Denotes Clearcoat color, a finish that provides a brilliant deep surface because the pigment lies beneath a clear, protective baked enamel coating.

Optional Exterior Moon dust Colors



Dark Red Metallic*



Light Blue Metallic*



French Vanilla Metallic*



Medium Fawn Metallic*

Dual-Shade Paint Options (upper/lower)

Medium Dark Pewter Metallic/Light Pewter Metallic
Dark Blue Metallic/Light Pewter Metallic
Dark Red Metallic/Silver Metallic
Light Fawn Metallic/Medium Fawn Metallic

THE LINCOLN COMMITMENT

The Lincoln-Mercury Division announces extended service coverage on the 1982 Lincoln as part of a comprehensive, new program committed to making your ownership of a new Lincoln a totally satisfying experience.

Now your 1982 Lincoln comes with the regular limited warranty which provides coverage through 12 months/12,000 miles, whichever comes first, plus extended service coverage for an additional 24 months/24,000 miles, whichever comes first.

This supplemental coverage includes specified repairs on engine, transmission, drive shaft and axles, steering, front suspension, brakes, air conditioning, and electrical components.*

During this period from 12 months/12,000 miles to 36 months/36,000 miles, you pay just \$50 per repair visit at your selling dealership. Coverage also includes reimbursements for towing and vehicle rental assistance when your Lincoln must be kept overnight.

*Warranty does not cover recommended maintenance services on normal wear parts. See your Dealer regarding the specific coverage provided and other important details.

E N G I N E E R I N G • F A C T S

A N D • F U R T H E R • C O N S I D E R A T I O N S

More reasons to appreciate your 1982 Lincoln.

High levels of advanced electronic technology make Lincoln an automobile truly worth enjoying.

Electronic Engine Controls

A computer brain monitors and controls spark, air, and fuel mixture, and exhaust gas recirculation for effective use of fuel.

Electronic Fuel Injection

Fuel flow and distribution to cylinders are more precise than with conventional carburetors, plus excess fuel not needed by the engine is returned to the fuel tank.

Automatic Overdrive Transmission

The engine is teamed with Automatic Overdrive Transmission. It incorporates a fourth gear which automatically engages at around 40 miles per hour to reduce engine revolutions and fuel consumption.

Front Suspension

A long- and short-arm coil-spring design with front stabilizer bar makes an important contribution to the plush Lincoln ride.

Rear Suspension

Also contributing to the Lincoln ride is a four-bar link design incorporating coil springs centered over the axle, and shock absorbers in front of the axle.

Self-Diagnostic Testing

Here is advanced technology that takes the guesswork out of servicing. A computerized "trouble shooter" that quickly and efficiently diagnoses difficulties that might occur in the engine.

1. The service technician connects a manual tester to your car's built-in computer.
2. He begins testing procedures to determine how the electronic engine controls are functioning. By actuating the built-in self-tester, he receives a service code that tells him if the EEC system is okay. If there's a problem, the service code tells where it is.
3. Through further testing, he's able to pinpoint the problem and work to correct it.

This process assures servicing that is more efficient, more accurate, and faster than before.

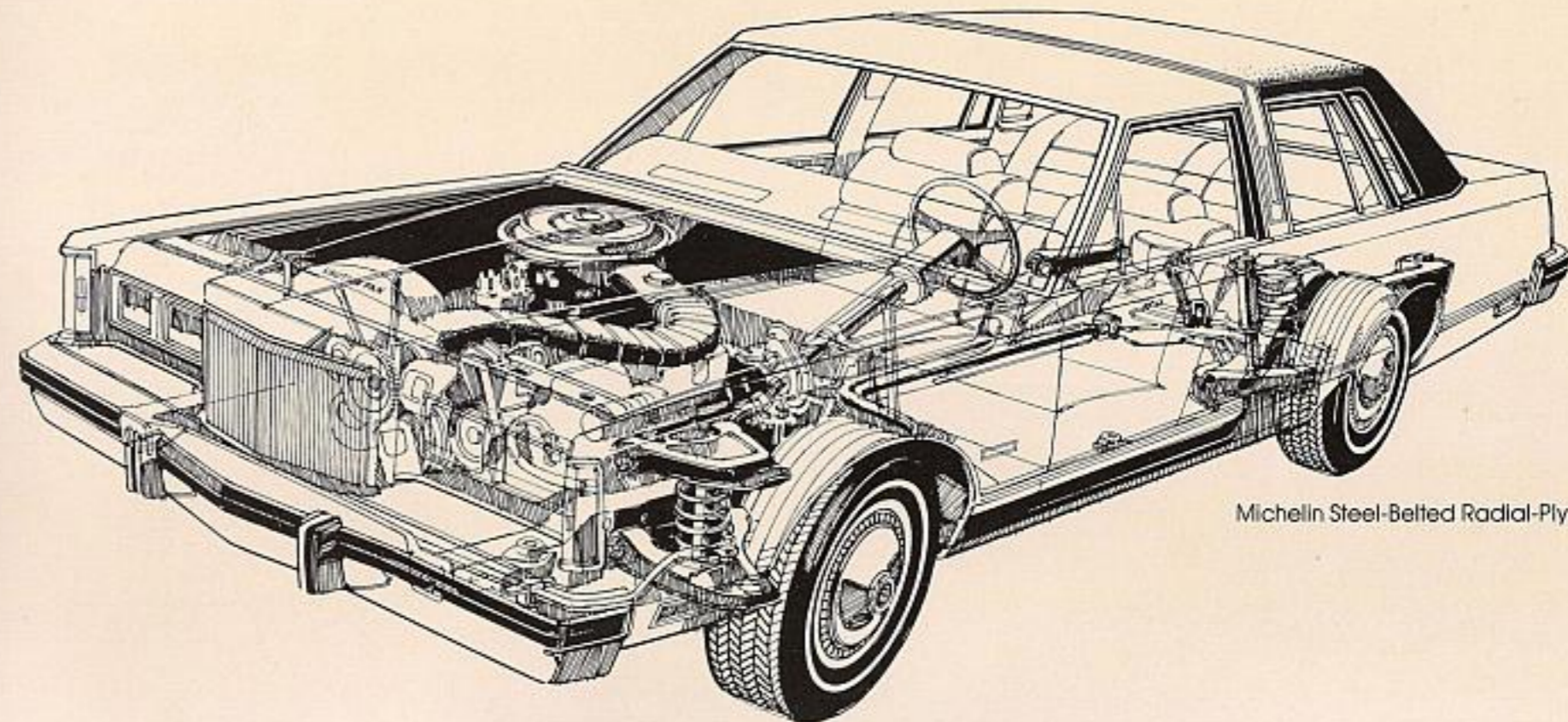
Electronic Instrument Panel with Message Center

The Electronic Instrument Panel with Message Center is an advanced, computerized system that's both easy to read and easy to use.

The electronic instrument cluster is fluorescently lit on a black background and features a bar system to indicate the amount of fuel in the tank, a digital speedometer, and the Message Center display.

The Message Center features a 12-button keyboard and provides such information as: time, day, date, warning messages, elapsed time, average fuel economy, average speed, estimated time of arrival, distance traveled, distance to destination, distance to empty, and conversion from miles to kilometers and vice-versa.

Here is advanced technology right at your fingertips. Creating total rapport between you and your new Lincoln.



Michelin Steel-Belted Radial-Ply Tires

1982 Lincoln Specifications

Wheelbase	117.3"
Overall Length	219.0"
Overall Width	78.1"
Overall Height	55.8"
Wheel Tread	
— Front	62.2"
— Rear	62.0"
Luggage Capacity (Cu. Ft.)	22.4
Fuel Capacity (Gals.)	18.0
Curb Weight (Lbs.)	4006
FRONT*	
Headroom**	39.0"
Legroom	43.5"
Shoulder Room	60.7"
Hiproom	56.5"
REAR*	
Headroom	38.2"
Legroom	42.1"
Shoulder Room	60.7"
Hiproom	57.8"
Overall Passenger Seating Capacity	6

*Interior dimensions with six-way power seat in rearmost position.

**Front headroom 2" less with optional moonroof.

Corrosion Perforation Warranty

Ford Motor Company offers a limited three-year corrosion perforation warranty excluding exhaust system components on all new 1982 Lincoln-

Mercury automobiles. And at no cost to you.

The warranty states that any part which, in normal use, develops perforation from corrosion within three years of retail delivery or first use will be repaired or replaced free of charge by the selling Dealer after inspection by a Ford representative. Exhaust system components or parts which develop corrosion perforation caused by accidents or other damage are not covered.

This warranty valid only in the 50 United States.

Leasing

There may be considerable advantages in leasing a new Lincoln, depending on your needs. Leasing lets you drive the new model of your choice, while paying a fixed monthly rate. If you use your Lincoln in business, your tax records may be simplified. Further, with an optional coupon book, you get a comprehensive range of maintenance services at any Lincoln-Mercury dealership. This helps you pre-determine your monthly automobile expenses.

There are other conveniences provided by your Lincoln-Mercury Dealer Leasing Association (LMDLA) member, such as handling tire replacement, licensing, taxes, and insurance.

Ford-Paid Repair Programs After The Warranty Period.

Sometimes Ford Motor Company offers adjustment programs to pay all or part of the cost of certain repairs. These programs are intended to assist owners and are in addition to the warranty or to required recalls. Ask Ford Motor Company or your Lincoln-Mercury Dealer about such programs relating to your Ford or Lincoln-Mercury vehicle.

To get copies of any adjustment program for your vehicle or the vehicle of interest to you:

Call Ford toll-free at

1-800-241-3673.

Alaska and Hawaii, call

1-800-243-3711.

In Georgia, call 1-800-282-0959 or write Ford at

Ford Customer Information System

Post Office Box 95427

Atlanta, GA 30347

We'll need your name and address; year, make, model, and vehicle identification number, as well as engine size; and whether you have a manual or automatic transmission.

Technical Service Bulletins

All vehicles need repairs during their lifetime. Sometimes Ford issues Technical Service Bulletins (TSBs) and easy-to-read explanations describ-

ing unusual engine or transmission conditions which may lead to costly repairs, the recommended repairs, and new repair procedures. Often a repair now can prevent a more serious repair later. Ask Ford Motor Company or your Lincoln-Mercury Dealer for any such TSBs and explanations relating to your Ford or Lincoln-Mercury vehicle.

To get copies of these Technical Service Bulletins and explanations for your vehicle or the vehicle of interest to you:

Call Ford toll-free at

1-800-241-3673.

Alaska and Hawaii, call

1-800-243-3711.

In Georgia, call 1-800-282-0959 or write Ford at

Ford Customer Information System

Post Office Box 95427

Atlanta, GA 30347

We'll need your name and address; year, make, model, and vehicle identification number, as well as engine size; and whether you have a manual or automatic transmission.

Specifications and descriptions used were in effect when this publication was approved for printing. Lincoln-Mercury Division reserves the right to discontinue options at any time, or change specifications, equipment, or designs without notice and without incurring obligation. Standard and optional equipment listed are subject to change.

LINCOLN

LINCOLN-MERCURY DIVISION



Litho in U.S.A. (120M) 8-81 Form No. P-8109